

Quality Control Report

Consultant **Wahib Medanat** Consultant Engineers
Site Name **Jumana Bint Abi Taleb Basic Mixed - Marka**
Package **Package 2**
Contractor **Dijlah Est. Construction Co.**
Tender No. **10/2019/USAID/SKEP/3/2**

Rep No. **QC-23 13**
Date **18 / 12 / 2021**

| Description of Non Conformance | Corrective Action | Required by / When |
|---|--|----------------------------|
| <ol style="list-style-type: none"> 1. Defects in coping. 2. Defects in granite of staircases. 3. Defects in floor tiles. 4. Defects in stone cladding. 5. Finishing work for corners is not done properly. | <ol style="list-style-type: none"> 1. Replace defected coping. 2. Replace defected granite tiles. 3. Undergoing/to be checked. 4. Defected stones to be replaced. 5. Rectify to reach sharp corner. | The Contractor/Immediately |
| Report Prepared by | Hassan Shaqbua, Supervision Quality Control Manager | |
| Contractor's Response | | |
| <p>It was observed that the Contractor started with the rectification of</p> <ol style="list-style-type: none"> 1. Floor tiles 2. Stone cladding | | |
| Notes | | |
| | | |

Consultant Site Engineer

Contractor Site Engineer

Signature

Signature

Quality Control Report

Before Photos:



Defected stone coping

Consultant Site Engineer

Signature

Contractor Site Engineer

Signature

2/11

1/3/2022

C:\Users\o.naddaf\Desktop\Qc-December 2021\
QC-231318122021.xlsx

Quality Control Report



Defected granite tiling

Consultant Site Engineer

Signature

Contractor Site Engineer

Signature

3/11

1/3/2022

Quality Control Report



Defected granite tiling

Consultant Site Engineer

Signature

Contractor Site Engineer

Signature

4/11

1/3/2022

Quality Control Report



Defected porcelain floor tiles

Consultant Site Engineer

Signature

Contractor Site Engineer

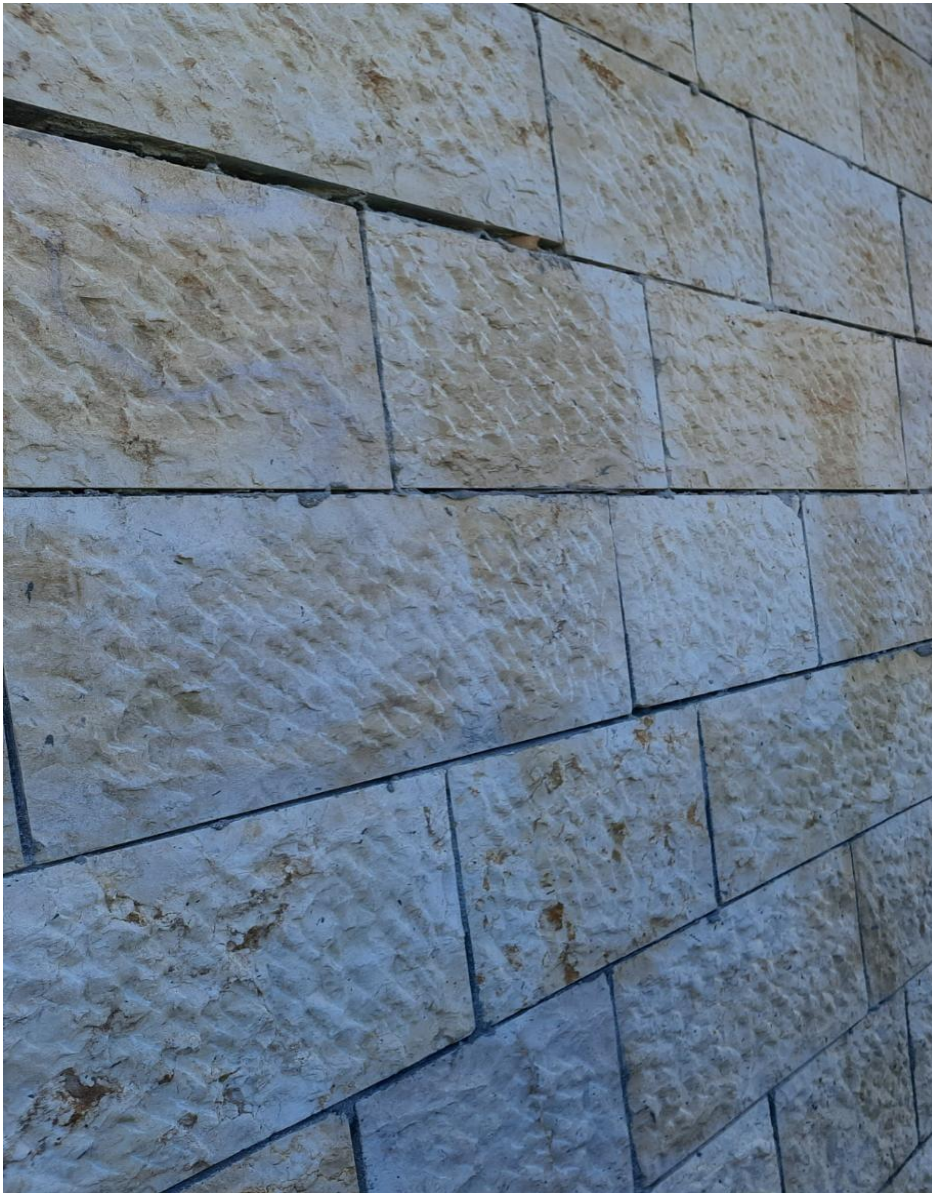
Signature

5/11

1/3/2022

C:\Users\o.naddaf\Desktop\Qc-December 2021\
QC-231318122021.xlsx

Quality Control Report



Defected stone

Consultant Site Engineer

Signature

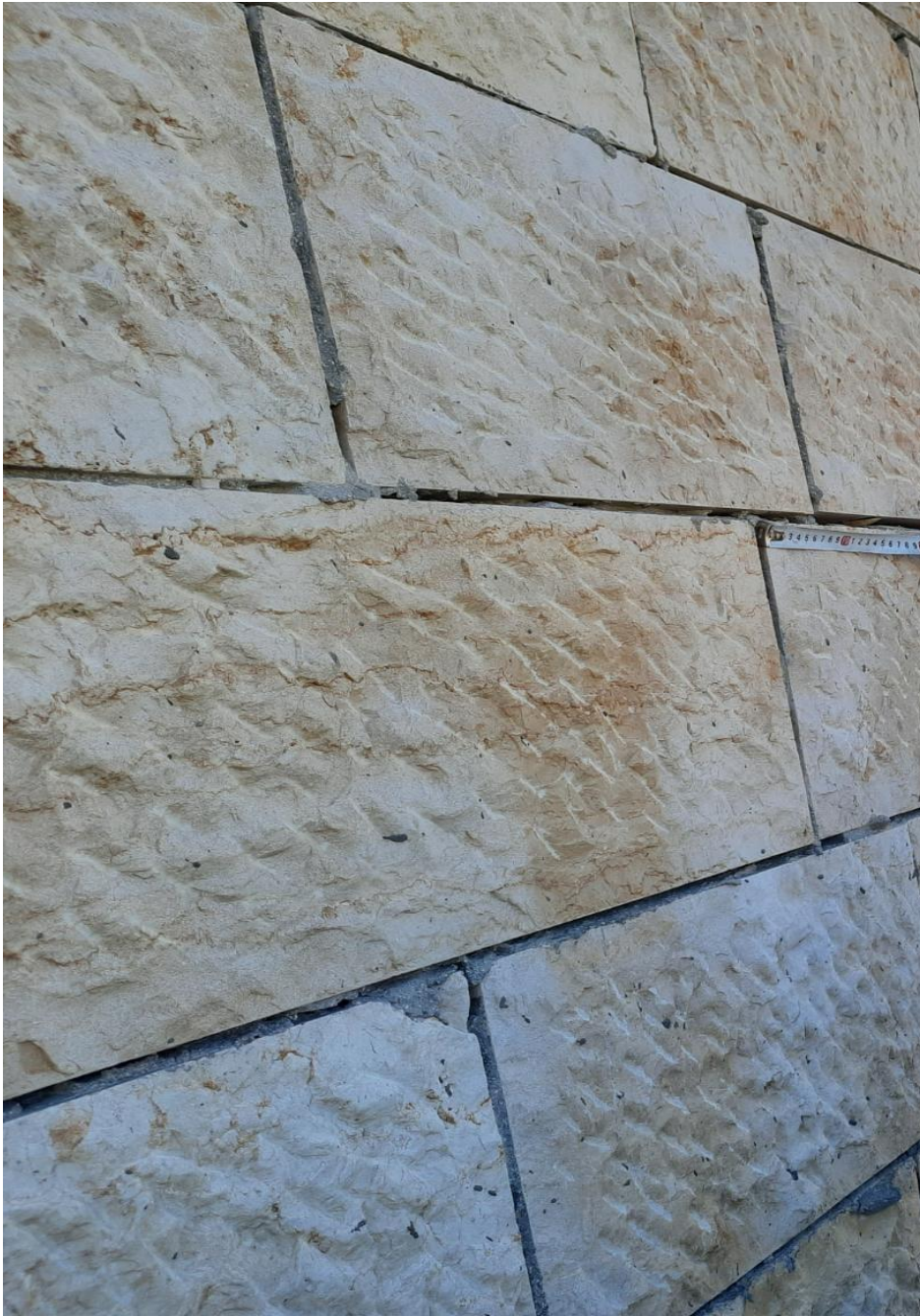
Contractor Site Engineer

Signature

6/11

1/3/2022

Quality Control Report



Defected stone

Consultant Site Engineer

Signature

Contractor Site Engineer

Signature

7/11

1/3/2022

Quality Control Report



Corners not done properly

Consultant Site Engineer

Signature

Contractor Site Engineer

Signature

8/11

1/3/2022

C:\Users\o.naddaf\Desktop\Qc-December 2021\
QC-231318122021.xlsx

Quality Control Report

Photos After:



Starting with the removal of defected porcelain floor tiles

Consultant Site Engineer

Signature

Contractor Site Engineer

Signature

9/11

1/3/2022

C:\Users\o.naddaf\Desktop\Qc-December 2021\
QC-231318122021.xlsx

Quality Control Report



Removal of defected stones

Consultant Site Engineer

Signature

Contractor Site Engineer

Signature

10/11

1/3/2022

C:\Users\o.naddaf\Desktop\Qc-December 2021\
QC-231318122021.xlsx

Quality Control Report



Replacing the defected stones

Consultant Site Engineer

Signature

Contractor Site Engineer

Signature

11/11

1/3/2022