



Consultant	Wahib Medanat Consultant Engineer	Rep No.	13-20122021
Contractor	Derar Saraireh & Sons for Engineering & Contracting	Tender No.	(11/2019/USAID/SKEP/3/S) Schools for a Knowledge Economy Project (SKEP) - Phase (3) Package (1, 2)
Site Name	Khadija Bint Khwailed Basic Mixed School- Shouna Janoubia	Day/ Date	Mon. 20/12/2021
Duration of Project	450 Calendar Days	Total Project Budget	9,789,417.840 JD

No.	Visitors		Remarks
1	Suhair Amarin	- Project Dir./Head of Architectural Department	
2	Hashem Abu Kwaik	-Senior Civil Engineer	
3	Akram Khammes	- Head of Electrical Department	
4	Marwan Sonna'a	-Head of Mechanical Department	
5	Hasan Shaqboua	-Quality Control Manager	

### Visit Notes

No.	Description
1	The supervision team inspected the stone work for the guard room and the main gate.
2	The Contractor stated that the levels of transformer room walls are missing in the design drawings. The Contractor shall submit RFI on this upon the supervision team instruction.
3	The team inspected the stone work for facades and observed: - The supervision team observed that the joints between built stones are not cleaned in some areas as part of the pointing process. - Number of broken stones were observed. The Contractor was instructed to rectify accordingly.



4	It was observed that the Contractor removed the tiled porcelain and skirting already executed in the building and removed out of the site.
5	The supervision team inspected the tiling work for the wet areas walls and found the process satisfying.
6	The supervision team inspected the stone coping for parapets and observed the defects in the edges of those coping. The team approved the Contractor's suggestion to eliminate the said defect by grinding the edges to the minimum.
7	It was observed that the Contractor has not started with the insulation work for the roof.
8	It was observed that the Contractor started with the excavation work for external sewage network.
9	It was observed that the Contractor is preparing the shuttering work for stiffener columns of the boundary walls.
10	The final coat of plastering for the multi-purpose hall is ongoing.
11	The concrete bases of the mechanical equipment at the roof are under construction.
12	It was observed that the Contractor has responded positively to the previous supervision instruction to wrap the installed steel door frames as necessary for protection purposes.
13	The supervision team observed different alignment in one wall due to different wall thickness. And due to the existing expansion joints, it was agreed with the Contractor to unify the thickness of the wall and replacing one door frames with wider jamb.



Project ID  
Sign on Site



Temperature check, sterilization and signing visitors' attendance sheet at the entrance of the site, complying with Covid-19 Protocol





General view of the project

(Figures: 01, 02, 03, 04 & 05)

(Figure: 01)



(Figure: 02)



(Figure: 03)



(Figure: 04)



(Figure: 05)





It was observed that the Contractor is preparing the shuttering work for stiffener columns of the boundary walls

(Figure: 06)



The supervision team inspected the stone work for the guard room and the main gate

(Figure: 07)





(Figure: 08)

The supervision team inspected the stone facades and comments were given to the Contractor

(Figure: 08 & 09)



(Figure: 09)





(Figure: 10)

The supervision team inspected the stone coping for parapets and observed the defects in the edges of those coping

(Figure: 10 & 11)



(Figure: 11)





The Contractor has responded positively to the previous supervision instruction to wrap the installed steel door frames as necessary for protection purposes

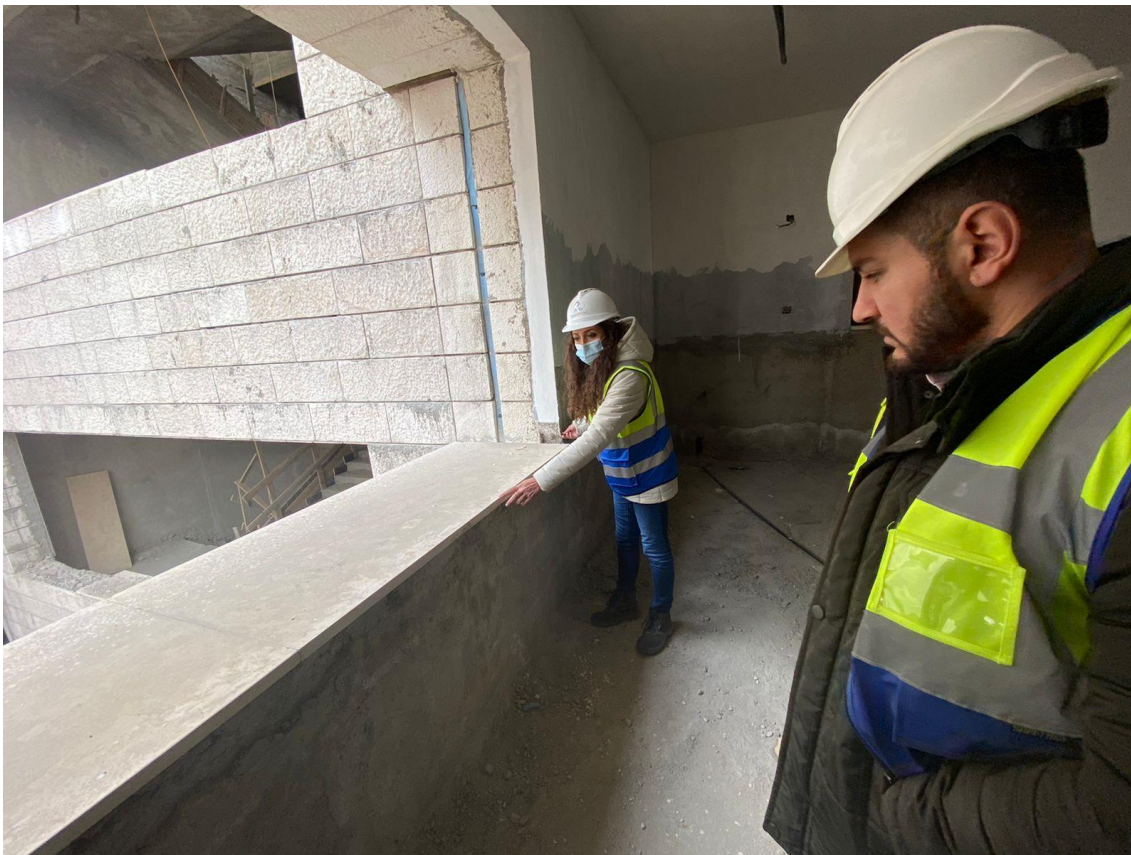
(Figure: 12)





It was observed that the Contractor removed the tiled porcelain and skirting already executed in the building and removed out of the site

(Figure: 13)



Inspecting the installed window sills

(Figure: 14)





It was observed that the Contractor started with the excavation work for external sewage network

(Figure: 15)





(Figure: 16)

The supervision team inspected the tiling work for the wet areas walls and found the process satisfying



(Figure: 16 & 17)

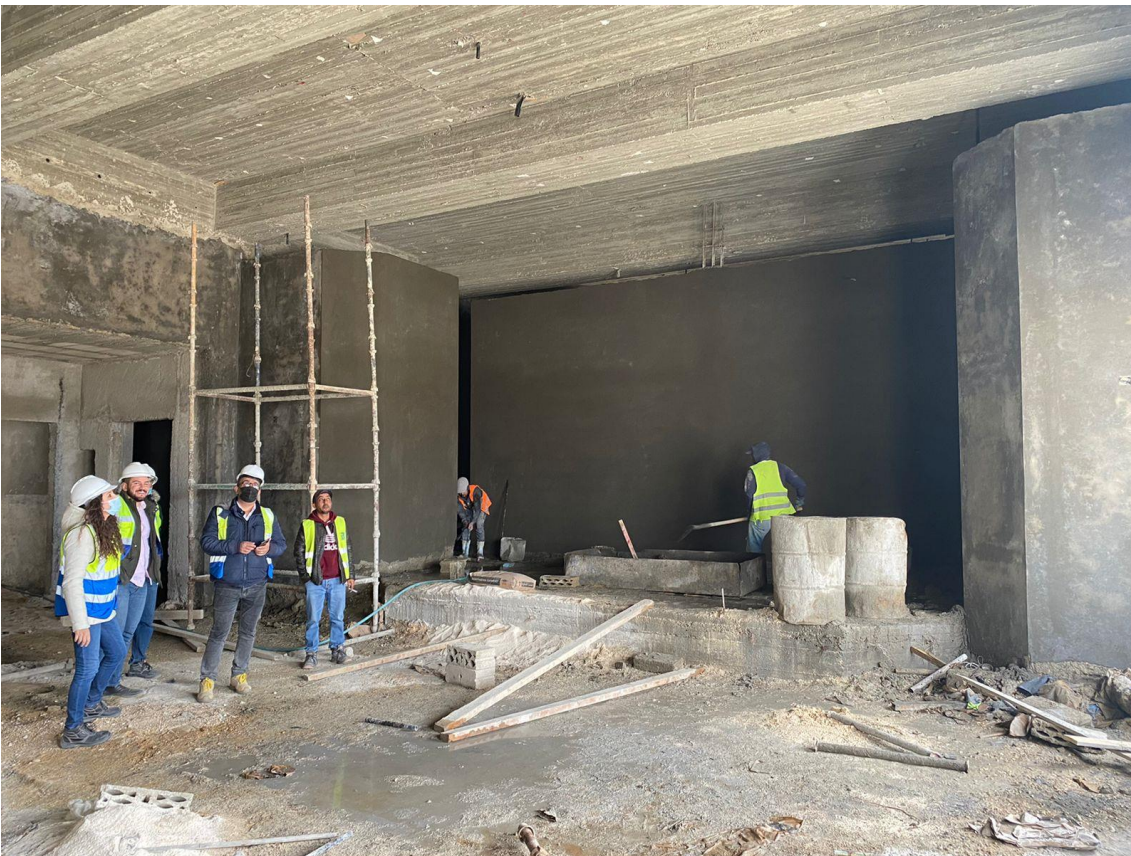
(Figure: 17)





The concrete bases of the mechanical equipment at the roof are under construction

(Figure: 18)



The team inspected the plastering work going on in the multi-purpose hall

(Figure: 19)





The supervision team observed different alignment in one wall due to different wall thickness. And due to the existing expansion joints, it was agreed with the Contractor to unify the thickness of the wall and replacing one door frames with wider jamb

(Figure: 20)



A meeting at the site offices was held to discuss ongoing activities and work progress

(Figure: 21)