



Consultant	Wahib Medanat Consultant Engineer	Rep No.	12-17102021
Contractor	Derar Saraireh & Sons for Engineering & Contracting	Tender No.	(11/2019/USAID/SKEP/3/S) Schools for a Knowledge Economy Project (SKEP) - Phase (3) Package (1, 2)
Site Name	Al Khansa' Basic Mixed School- Al Balqa	Day/ Date	Sun. 17/10/2021
Duration of Project	450 Calendar Days	Total Project Budget	9,789,417.840 JD

No.	Visitors		Remarks
1	Suhair Amarin	- Project Dir./Head of Architectural Department	
2	Hashem Abu Kwaik	-Senior Civil Engineer	
3	Akram Khammes	- Head of Electrical Department	
4	Marwan Sonna'a	-Head of Mechanical Department	
5	Hasan Shaqboua	-Quality Control Manager	

Visit Notes

No.	Description
1	General inspection to the progress in the mock-up room to this date: 1.1. The Contractor imported the steel grill protection and the supervision team inspected before installation. 1.2. Inspecting the window opening, i.e., window jambs and the window sill and the slight slope to direct the rain water outside. 1.3. Inspecting the finishing of stone jambs for the mock-up room. 1.4. Inspecting stone pointing sample.
2	General inspection was conducted on the stone building for facades.



3	<p>General inspection was conducted on the steel door frames and remarks were given to the Contractor to rectify.</p> <p>3.1. The removal of frames which do not comply regarding the dimensions. 3.1. Casting concrete under the frames at the recess areas to lighten the loads on the bolts those frames are installed in.</p>
4	<p>The installation of mechanical cabinets in the toilet area was inspected to insure the compatibility with tiling and proper cut-off tile pieces. The Contractor was requested to rectify the location of cabinets slightly to avoid small cut-off tile pieces.</p>
5	<p>The Supervision team inspected the imported marble window sills and provided the Contractor with general remarks.</p>
6	<p>The supervision team inspected the executed tiles in the toilets and provided the Contractor with general remarks and the process of tiling.</p>
7	<p>It was observed that the Contractor removed the formwork of the roof slab of the multi-purpose hall.</p>
8	<p>Instructions was given to Contractor regarding the execution of stairs inside the multi-purpose hall.</p>
9	<p>It was observed that the Contractor is working in the execution of the external walls of the multi-purpose hall. Casting of part of those walls was observed and the supervision team provided the Contractor with a remark to insure a smooth and top levelled casting.</p>
10	<p>The supervision team instructed the Contractor to temporarily close the ends of installed electrical pipes to avoid entering dirt or debris to those pipes which may cause obstruction to electrical wiring.</p>
11	<p>Discussion was conducted regarding the stone building at the entrance of the building. The soffit of the lintel/outside to be stone or external paint. This will be reviewed and decided.</p>
12	<p>It was noticed that the fire extinguisher place needs to be plastered and well-finished. The Contractor was requested to act accordingly.</p>
13	<p>At the end of the site visit, a meeting was held at the site offices to discuss the observations and the required actions with the Contractor.</p>



Project ID
Sign on Site



WAHIB
MEDANAT
consultant engineers



Sterilization and signing visitors' attendance sheet at the entrance of the site, complying with Covid-19 Protocol



General view of the project

(Figures: 01, 02, 03 & 04)

(Figure: 01)



(Figure: 02)



(Figure: 03)



(Figure: 04)



(Figure: 05)

The supervision team inspecting the Insulation and backfilling works

(Figures: 05 & 06)

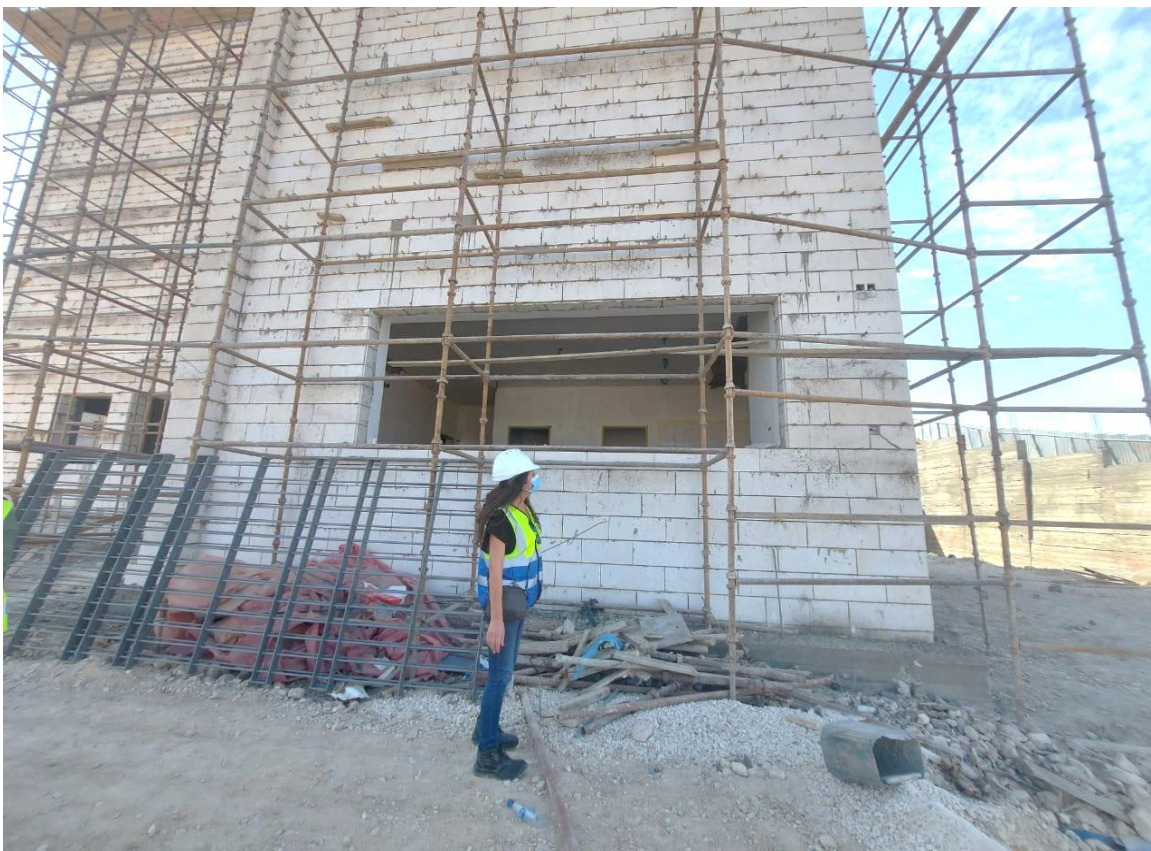


(Figure: 06)



The Supervision team inspected the imported marble window sills and provided the Contractor with general remarks

(Figure: 07)



General inspection was conducted on the stone building for facades

(Figures: 08 & 09)

(Figure: 08)



(Figure: 09)



The Contractor imported the steel grill protection and the supervision team inspected before installation

(Figure: 10)



Inspecting stone pointing sample

(Figure: 11)



(Figure: 12)

Inspecting the window opening, i.e., window jambs and the window sill and the slight slope to direct the rain water outside in the mock-up Room



(Figures: 12 & 13)

(Figure: 13)



(Figure: 14)

General inspection was conducted on the steel door frames and remarks were given to the Contractor to rectify

(Figures: 14 % 15)



(Figure: 15)



The supervision team instructed the Contractor to temporarily close the ends of installed electrical pipes to avoid entering dirt or debris to those pipes which may cause obstruction to electrical wiring

(Figure: 16)



It was noticed that the fire extinguisher place needs to be plastered and well-finished. The Contractor was requested to act accordingly.

(Figure: 17)



(Figure: 18)

The installation of mechanical cabinets in the toilet area was inspected to insure the compatibility with tiling and proper cut-off tile pieces.

(Figures: 18 & 19)



(Figure: 19)



(Figure: 20)

The Contractor was requested to rectify the location of cabinets slightly to avoid small cut-off tile pieces



(Figure: 20 & 21)

(Figure: 21)



(Figure: 22)

The supervision team inspected the executed tiles in the toilets and provided the Contractor with general remarks and the process of tiling



(Figures: 22 & 23)

(Figure: 23)



It was observed that the Contractor is working in the execution of the external walls of the multi-purpose hall. Casting of part of those walls was observed

(Figure: 24)



Instructions was given to Contractor regarding the execution of stairs inside the multi-purpose hall

(Figure: 25)



It was observed that the Contractor removed the formwork of the roof slab of the multi-purpose hall

(Figure: 25)



Frames installation for Wooden doors

(Figure: 26)



Inspecting plastering work

(Figure: 27)



At the end of the site visit, a meeting was held at the site offices to discuss the observations and the required actions with the Contractor

(Figure: 28)