



Consultant	Wahib Medanat Consultant Engineer	Rep No.	13-10112021
Contractor	Derar Saraireh & Sons for Engineering & Contracting	Tender No.	(11/2019/USAID/SKEP/3/S) Schools for a Knowledge Economy Project (SKEP) - Phase (3) Package (1, 2)
Site Name	Khadija Bint Khwailed Basic Mixed School- Shouna Janoubia	Day/ Date	Wed. 10/11/2021
Duration of Project	450 Calendar Days	Total Project Budget	9,789,417.840 JD

No.	Visitors		Remarks
1	Suhair Amarin	- Project Dir./Head of Architectural Department	
2	Hashem Abu Kwaik	-Senior Civil Engineer	
3	Akram Khammes	- Head of Electrical Department	
4	Marwan Sonna'a	-Head of Mechanical Department	
5	Hasan Shaqboua	-Quality Control Manager	

Visit Notes

No.	Description
1	The stone façades and the entrance area have been inspected and remarks were provided to the Contractor to rectify.
2	The steel door frames have been inspected and remarks were provided to the Contractor to rectify.
3	Upon the inspection by the team, it was observed that number of installed window sills have a thickness different from the required (i.e. less or more). The Contractor was requested to replace those sills and install new sills as per Contract.



4	It was observed that the Contractor executed an external expansion joint wrongly. The Contractor was requested to rectify as per Contract.
5	The installed sample of steel protection grill for window was inspected by the visiting team.
6	It was observed that the Contractor started with removing the non-complying backfilling material the Contractor collected previously.
7	It was observed that the Contractor installed electrical outlets at the façade in a wrong way. The Contractor was requested to rectify.
8	The ceramic tiles for toilets walls have been inspected focusing on the relation of tiles with the door frames and the mechanical cabinets. The supervision team exerted considerable effort to avoid small cut-off ceramic pieces due to the installation of those items.
9	The executed block walls at the theater at the ground floor was inspected by the visiting team.
10	The plastering finish coat at some areas has been inspected.
11	Delivered tiles and stones to the site have been checked.
12	The visiting team observed remaining concrete at the dismantled door frames due to the defects in those frames. To approve any frame, the remaining concrete should be removed without causing any scratches to those frames, otherwise they should be replaced with new ones.
13	It was observed that the Contractor installed number of steel door frames without taking into consideration the limits of concrete casting and plastering layers to insure good quality of executed works. The Contractor was requested to rectify.



Project ID
Sign on Site



Temperature check, sterilization and signing visitors' attendance sheet at the entrance of the site, complying with Covid-19 Protocol



General view of the project

(Figures: 01, 02, 03 & 04)

(Figure: 01)



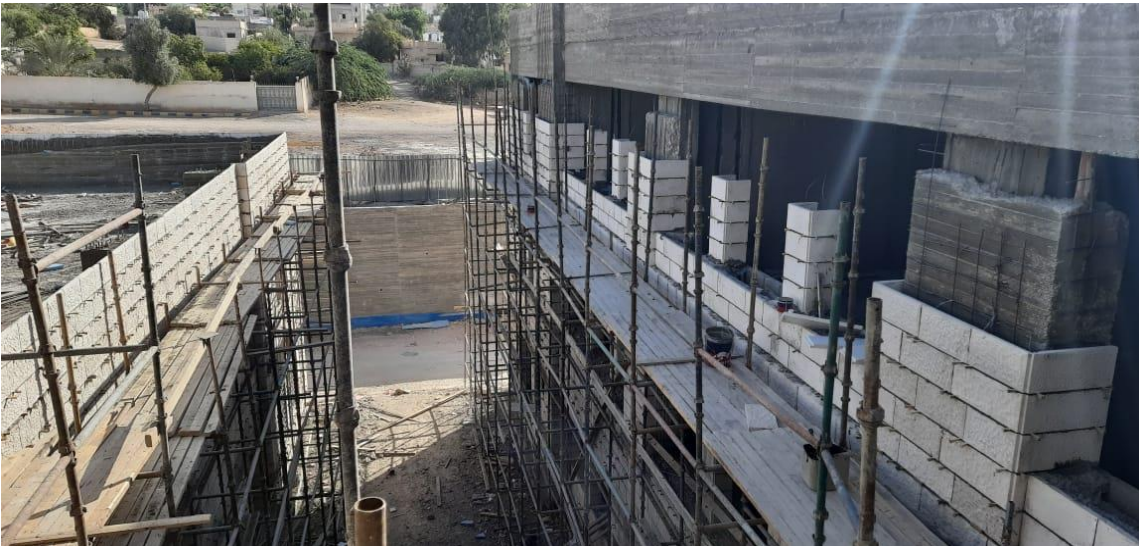
(Figure: 02)



(Figure: 03)



(Figure: 04)



General inspection was conducted on the stone building; notes were given to the Contractor in this regard

(Figure: 04, 05, 06, 07 & 08)

(Figure: 05)



(Figure: 06)



(Figure: 07)



(Figure: 08)



It was observed that the Contractor executed an external expansion joint wrongly. The Contractor was requested to rectify as per Contract

(Figure: 09)



It was observed that the Contractor started with removing the non-complying backfilling material the Contractor collected previously

(Figure: 10)



The installed sample of steel protection grill for window was inspected by the visiting team

(Figure: 11)



(Figure: 12)



The Supervision team inspected the imported stone pieces (Mufajar Texture), and provided the Contractor with general remarks

(Figure: 12 & 13)

(Figure: 13)



It was observed that the Contractor installed electrical outlets at the façade in a wrong way. The Contractor was requested to rectify

(Figure: 14)



Upon the inspection by the team, it was observed that number of installed window sills have a thickness different from the required (i.e. less or more). The Contractor was requested to replace those sills and install new sills as per Contract

(Figure: 15)



The plastering finish coat at some areas has been inspected

(Figure: 16)



Inspecting blockwork at the multi-purpose hall/ground floor

(Figure: 17)



The imported ceramic wall tiles

(Figure: 18)



(Figure: 19)

The ceramic tiles for toilets walls have been inspected focusing on the relation of tiles with the door frames and the mechanical cabinets. The supervision team exerted considerable effort to avoid small cut-off ceramic pieces due to the installation of those items

(Figure: 19, 20 & 21)

(Figure: 20)



(Figure: 21)



It was observed that the Contractor installed number of steel door frames without taking into consideration the limits of concrete casting and plastering layers to insure good quality of executed works. The Contractor was requested to rectify

(Figure: 22)



The visiting team observed remaining concrete at the dismantled door frames due to the defects in those frames. To approve any frame, the remaining concrete should be removed without causing any scratches to those frames, otherwise they should be replaced with new ones

(Figure: 23)



A tour inside the site was conducted

(Figure: 24)



After the site visit a meeting was held at the site offices

(Figure: 25)