



Consultant	Wahib Medanat Consultant Engineer	Rep No.	11-21082021
Contractor	Derar Saraireh & Sons for Engineering & Contracting	Tender No.	(11/2019/USAID/SKEP/3/S) Schools for a Knowledge Economy Project (SKEP) - Phase (3) Package (1, 2)
Site Name	Um Al Dananir Basic Mixed School- Al Balqa	Day/ Date	Sat. 21/08/2021
Duration of Project	450 Calendar Days	Total Project Budget	9,789,417.840 JD

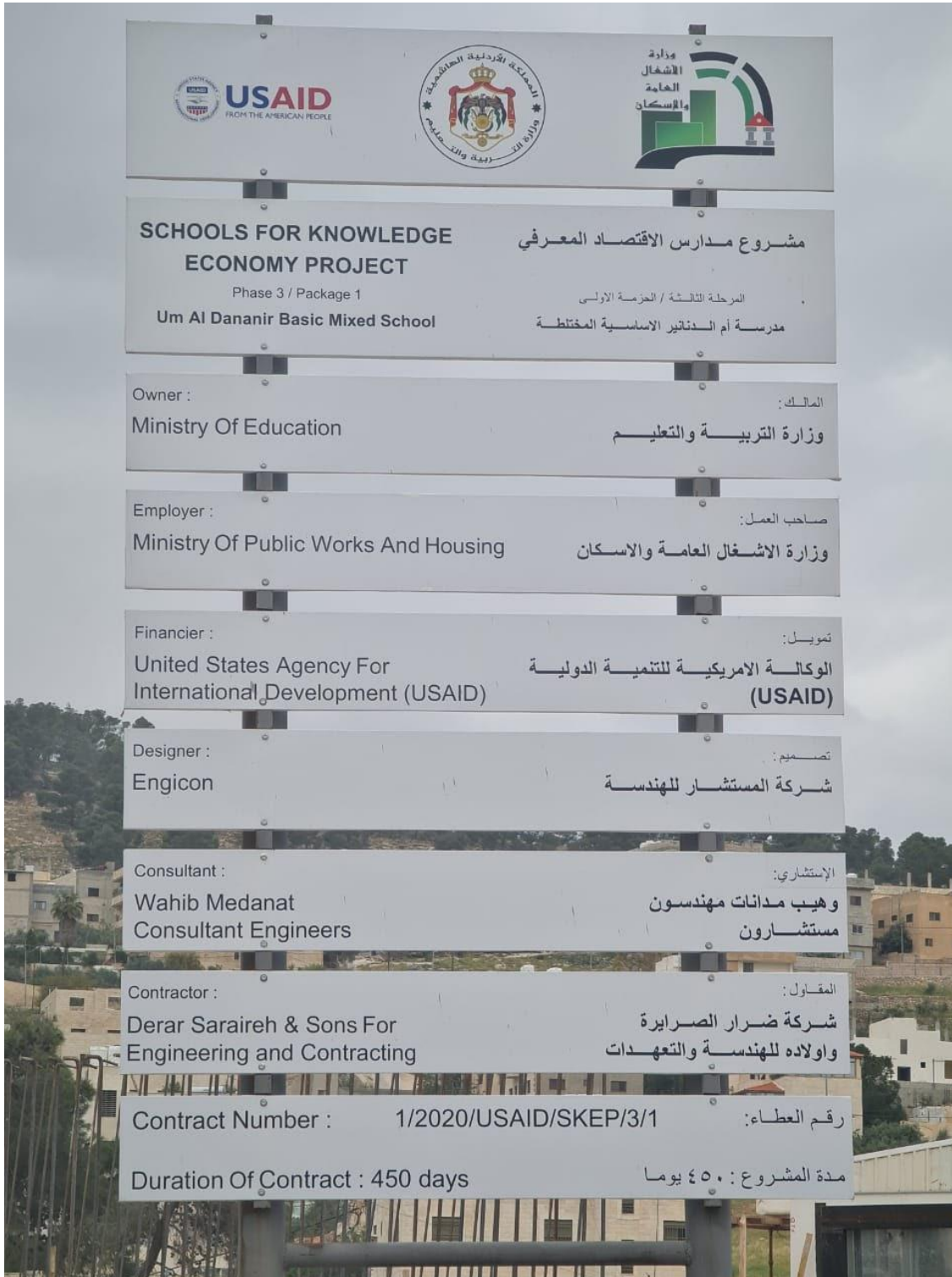
No.	Visitors		Remarks
1	Suhair Amarin	- Project Dir./Head of Architectural Department	
2	Omar Elayan	-Senior Civil Engineer	
3	Akram Khammes	- Head of Electrical Department	
4	Marwan Sonna'a	-Head of Mechanical Department	
5	Hasan Shaqboua	-Quality Control Manager	

Visit Notes

No.	Description
1	<p>Stone Work:</p> <ul style="list-style-type: none"> The office support team checked the supplied stone to the site and observed the executed stone works at the northern, southern, and eastern elevations. The following remarks have been observed on the built stone on the facades: <ul style="list-style-type: none"> Limited number of stones have broken edges. Chiseling pattern has to be unified for all stones according to the approved sample.
2	<p>The Consultant observed that, at the door, window jambs, the end of block wall is passing the end of stone limit.</p> <p>The Contractor was requested to match the block wall with the stone end.</p>



2	The Consultant site engineer gave a brief on the pending NCR work at site such as insulation works in order to follow up with all the updated issues in site and to make sure that the Contractor will make the needed corrective action and fix all issues.
3	Plastering works have been checked at basement floor and the Consultant stressed on the installation of external beads as an important accessory for plaster. Also MEP first fix and the relation with plaster was checked.
4	The Consultant discussed with the Contractor window sills details at basement floor, marble/stone.
5	The Consultant stressed that the Contractor should remove the remaining wood pieces at the basement ceiling.
6	Blockwork at ground floor has been checked and the Consultant stressed on using clean platform for mortar mixing as the available on site does not comply with what was requested.
7	Reinforcement work at second floor slab zone "B" has been checked and parapet detail at zone "A" under construction were checked as well.
8	The Consultant checked the quality of concrete after casting the roof framing slab at zone "A" and stressed on the necessity of concrete curing.
9	A meeting at site offices was held with the presence of Contractor PM (Eng. Khalid) to discuss number of issues such as the dimension of stone sill pieces.
10	The Consultant discussed with the Contractor the expansion joint details at second floor zone "B"
11	<p>The Consultant observed that the Contractor conducted back-filling work without doing the appropriate insulation work. NCR by Medanat site engineer was issued in this regard.</p> <p>The Contractor was instructed to remove the back-filling to execute the required insulation (bitumen paint and waterproofing sheets including the carton sheets) as per contract and the instruction of Supervision site engineer.</p> <p>During the site visit, Engineer representatives observed that remedy works was ongoing.</p>



Project ID
Sign on Site



Sterilization and signing visitors' attendance sheet at the entrance of the site, complying with Covid-19 Protocol





General view of the preparation works for Second floor slab zone "B"

(Figure: 01)



Eng. Representatives observed the executed stone works at the northern, southern, and eastern elevations

Remarks have been given

(Figure: 02)



(Figure: 03)



The office support team checked the supplied stone to the site



(Figure: 04)



Stone work for
School main
entrance

(Figure: 05)



Stone soffit detail
and its
dimensions over
the entry door at
entrance

(Figure: 06)



The Consultant discussed with the Contractor window sills details at basement floor, marble/stone

(Figure: 07)



The Consultant discussed with the Contractor the stone soffit detail of one window at basement floor

(Figure: 08)



It was observed that one block wall does not match with the concrete wall and the difference was found to be over 5cm. the Contractor was instructed to cast a concrete strip with the use of fixing accessories appropriate to the said case

(Figure: 09)



Plastering works have been checked at basement floor and the Consultant stressed on the installation of external beads as an important accessory for plaster. Also MEP first fix and the relation with plaster was checked

(Figure: 10)



The Consultant observed that, at the door, window jambs, the end of block wall is passing the end of stone limit.

The Contractor was requested to match the block wall with the stone end

(Figure: 11)



The Consultant stressed that the Contractor should remove the remaining wood pieces at the basement ceiling

(Figure: 12)



Blockwork at ground floor has been checked and the Consultant stressed on using clean platform for mortar mixing as the available on site does not comply with what was requested

(Figure: 13)



The Consultant observed that the Contractor conducted back-filling work without doing the appropriate insulation work

The Contractor was instructed to remove the back-filling to execute the required insulation (bitumen paint and waterproofing sheets including the carton sheets) as per contract and the instruction of Supervision site engineer.

During the site visit, Engineer representatives observed that remedy works was ongoing

(Figure: 14)



Scaffolding and formwork for second floor slab zone "B"

(Figure: 15)



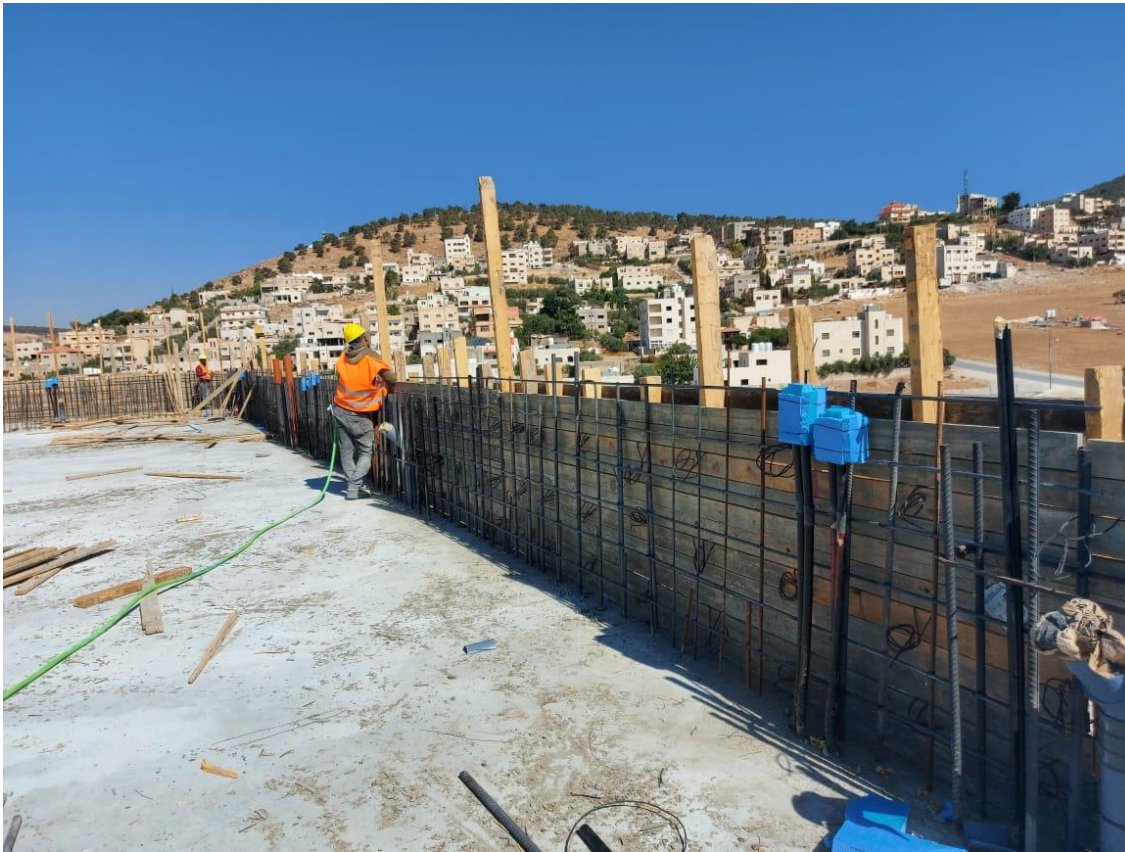
Reinforcement work at second floor slab zone "B"

(Figure: 16)



The Consultant discussed with the Contractor the expansion joint details at second floor zone "B"

(Figure: 17)



The parapet detail at zone "A" under construction were checked

(Figure: 18)



The Consultant checked the quality of concrete after casting the roof framing slab at zone "A" and stressed on the necessity of concrete curing

(Figure: 19)



The new adjacent wall work has not started yet

(Figure: 20)



A tour inside the site was Conducted

(Figure: 21)



After the site visit a meeting was held in the site offices in the presence of Engineer's representatives and Contractor's representatives to discuss work progress, quality and safety issues

(Figure: 22)