

# School for Knowledge Economy Project (SKEP)

## Phase III – Package 2


### Monthly Progress Report

No. 9

June, 2021



**WAHIB  
MEDANAT**  
consultant engineers

 + 962 6 5821206  
+ 962 6 5817847  
+ 962 79 7650576

 + 962 6 5862357

 mail@medanat.com  
info@medanat.com

 www.medanat.com

**TÜV**  
AUSTRIA  
HELLAS

No.: 20001210004621  
Management System as per  
EN ISO 9001 : 2015

**TÜV**  
AUSTRIA  
HELLAS

No.: 20152200003939  
Management System as per  
ISO 45001 : 2018

# | Table of Contents

	Page
<b>  Table of Contents</b>	<b>2</b>
<b>1   Project Particulars</b>	<b>5</b>
1.1 Contract Main Information	5
1.2 Executive Summary	7
A- Hay Al-Iskan Basic School Mixed School – Jerash	7
B- Thahr Al-Sarow Basic School for Boys – Jerash	8
C- Jumana Bint Abi Taleb Basic Mixed School – Amman	9
<b>2   Consultant Organization Project Staff</b>	<b>10</b>
<b>3   Summary of Activities</b>	<b>13</b>
3.1 Hay Al-Iskan Basic School Mixed School – Jerash	13
3.2 Thahr Al-Sarow Basic School for Boys- Jerash	13
3.3 Jumana Bint Abi-Taleb Basic Mixed School- Amman	13
<b>3.4 Mobilization Tracking Log</b>	<b>13</b>
<b>4   Project Time and Duration</b>	<b>14</b>
<b>5   Project Contract &amp; V.O's</b>	<b>16</b>
<b>6   Cash Flow</b>	<b>17</b>
<b>7   Progress</b>	<b>18</b>
7.1 Package 2 Average Progress	18
7.2 Hay Al Iskan Basic Mixed School – Jerash	21
7.3 Thahr Al-Sarow Basic School for Boys- Jerash	24
7.4 Jumana Bint Abi-Taleb Basic Mixed School- Amman	27
7.5 Engineer comments on work progress	30
<b>8   Submitted Materials</b>	<b>32</b>
8.1 Summary of Submitted Materials	32
8.2 Shop Drawings & Submittal Tracking LOG	33
8.3 Materials Submittal Vendor List	33
<b>9   Correspondence Tracking Logs</b>	<b>34</b>

<b>10   Non-conformance Report Tracking Log</b>	<b>34</b>
10.1 HSE	34
10.2 QCs	34
Hay Al Iskan Basic Mixed School- Jerash	34
Thahr Al Sarow Basic School for Boys- Jerash	35
Jumana Bint Abi Taleb Basic Mixed School- Amman	35
10.3 NCRs	36
<b>11   Request For Information Tracking Logs</b>	<b>36</b>
11.1 RFIs-Designer	36
11.2 RFIs-Contractor	36
<b>12   Site problems and Solutions</b>	<b>37</b>
12.1 Hay Al Iskan Basic Mixed School-Jerash	37
12.2 Thahr Al Sarow Basic School for Boys-Jerash	37
12.3 Jumana Bint Abi Taleb Basic Mixed School- Amman	37
<b>13   Meetings and Site Visits</b>	<b>38</b>
13.1 Coordination & Progress Meetings	38
13.2 Site Visits	43
13.3 Regular Monthly Site Visits (Home Office Support)	61
<b>14   Manpower Logs</b>	<b>88</b>
14.1 Hay Al Iskan Basic Mixed School – Jerash Progress	88
14.2 Thahr Al Sarow Basic School for Boys-Jerash	88
14.3 Jumana Bint Abi Taleb Basic Mixed School- Amman	88
<b>Manpower Link</b>	<b>88</b>
<b>15   Daily Plant and Equipment</b>	<b>88</b>
15.1 Hay Al Iskan Basic Mixed School – Jerash Progress	88
15.2 Thahr Al-Sarow Basic School for Boys- Jerash	88
15.3 Jumana Bint Abi-Taleb Basic Mixed School- Amman	88
<b>16   Lab-test Results Tracking Log</b>	<b>89</b>
16.1 Hay Al Iskan Basic Mixed School – Jerash	89
16.2 Thahr Al-Sarow Basic School for Boys- Jerash	89
16.3 Jumana Bint Abi-Taleb Basic Mixed School- Amman	89

---

Link	89
<b>17   Obstacles Log (Site Obstacles)</b>	<b>90</b>
17.1 Hay Al Iskan Basic Mixed School - Jerash	91
17.2 Thahr Al Sarow Basic School for Boys – Jerash SOLVED	93
<b>18   Selected Photos</b>	<b>94</b>
18.1 Hay Al Iskan Basic Mixed School- Jerash	94
18.2 Thahr Al Sarow Basic School for Boys- Jerash	96
18.3 Jumana Bint Abi Taleb Basic Mixed School - Amman	98
<b>19   Location Links</b>	<b>100</b>
19.1 Hay Al Iskan Basic Mixed School – Jerash	100
19.2 Thahr Al-Sarow Basic School for Boys - Jerash	100
19.3 Jumana Bint Abi-Taleb Basic Mixed School - Amman	100
<b>20   Website Reports Links</b>	<b>100</b>
20.1 Daily Reports	100
20.2 Weekly Reports	100
20.3 Monthly Reports	100
20.4 CMTO Inspection Reports	100
20.5 Quality Reports	100
<b>21   Training</b>	<b>100</b>
21.1 Training:	101
21.2 Training Sessions:	102

# 1 | Project Particulars

## 1.1 Contract Main Information

Contract Name:	School for Knowledge Economy Project (SKEP) Phase III – Package (2)
Owner:	Ministry of Education (MOE)
Employer:	Ministry of Public Works & Housing (MPWH)
Funded By:	United States Agency for International Development (USAID)
Consultant:	Wahib Medanat Consultant Engineers
Project Management:	Trigon Associates (CMTO)
Contractor:	Dijlah Establishment Constr. Contracting
Contract No.:	10/2019/USAID/SKEP/3/2
Commencement Date:	21/10/2020
Time for Substantial Completion of the Work:	Thahr Al-Sarow Basic School for Boys- Jerash: 450 Days
	Jumana Bint Abi-Taleb Basic Mixed School- Amman: 450 Days
	Hay Al Iskan Basic Mixed School – Jerash : 450 Days
Time to Complete the Work Including Punch List Items:	Within 14 Calendar days for each School from the date of taking over committee inspection
Contract Amount at Award:	8,314,983.735 JOD
Amount of Liquidated Damages:	Thahr Al Sarow Basic School for Boys- Jerash: 2000 JOD/ Day but not

	to exceed 15% of total amount for the School
	Jumana Bint Abi Taleb Basic Mixed School- Amman: 200 JOD/ Day but not to exceed 15% of total amount for the School
	Hay Al Iskan Basic Mixed School- Jerash: 2000 JOD/ Day but not to exceed 15% of the total amount for the School
Defects Liability Period:	(730) Calendar Days for all Civil & Electromechanical works from the date of Substantial Completion for each school including the maintenance of plantation works
Maintenance Guarantee for Defects Liability Period:	5% of the final Contract Sum
Percentage of Retention from Interim Payment Certificate:	10% of each payment
Limit of Retention Money:	5% of Contract Sum as amended
Period of Time for Payment to be made after Certification by the Engineer:	60 Calendar Days
Minimum Amount of Interim Payment Certificate:	JOD 300,000 (Three hundred thousand Jordanian Dinar) for all schools under the Package
Payment for Imported Materials	40% upon receipt of approved bill of lading and another 20% when stored on site to the Engineer's approval
Payment for Local Materials and Equipment	60% and restricted to cement and reinforcing steel when stored on site to the Engineer's approval.

## 1.2 Executive Summary

The Ministry of Education represented by the Ministry of Public Works & Housing has received a grant from USAID to finance the construction of:

School for Knowledge Economy Project (SKEP) – Phase III – Package (2)

The package consists of construction of three (3) Schools at different locations, two schools in Jerash and one School in Amman.

The project consists of construction of new classrooms, computer labs, laboratories, public utilities...etc., and site works for group of schools as shown in the Tender Documents, the Schools are:

### A- Hay Al-Iskan Basic School Mixed School – Jerash

The project consists of five floors building, with a total approximate area of 5420 m<sup>2</sup> in addition to site works as deemed in the drawings and BOQ.

### Main Elements

Land Area =6322.090 m2			External Works = 4523 m2					no . of floor = 5		
Floor	F.F.L	Area (m2)	no.of classroom grade (1-3)	no.of classroom grade (4-10)	no . Of KG classroom	student for each classroom	student in floor	General Toilets	Mens Toilets	Womens Toilets
Basement	109.06	330.35	-	-	-	-	-	-	-	-
Ground	112.7	1799.75	-	-	2	24	48	3*7 m2 with HC toilet for each one AND child care toilet	1*9 m2	1*12 m2
First	116.34	1571.45	9	-	-	36	324	HC toilet , STAFF	23 m2	23 m2 with
second	119.98	1571.45	-	14	-	36	504	6 m2 HC toilet, STAFF	-	27*2 m2
Roof	123.47	105.1	-	-	-	-	-	-	-	-
External Works	Guard Room	22.4/34/65.9	-	-	-	-	-	-	-	-
Total		5378.1	25			-	876	-	32	89

Location Link:

[Hay Al Iskan Basic Mixed School – Jerash](#)

## B- Thahr Al-Sarow Basic School for Boys – Jerash

The project consists of five floors building, with a total approximate area of 4615 m<sup>2</sup> in addition to site works as deemed in the drawings and BOQ.

### Main Elements

Land Area =4036 m2					External Works = 2790 m2			no . of floor = 4		
Floor	F.F.L	Area (m2)	no.of classroom grade (1-3)	no.of classroom grade (4-10)	no . Of KG classroom	student for each classroom	student in floor	General Toilets	Mens Toilets	Womens Toilets
Ground	106	1245.61	-	-	-	-	0	2*toilets (men & Women) 25 m2 and 2*HC toilets	8.5 m2 men toilet	16.5 m2 women toilet
First	109.64	1057.71	-	7	-	36	252	1*39.5 m2 toilet with HC toilet	-	-
Second	113.28	1057.71	-	7	-	36	252	1*39.5 m2 toilet with HC toilet	-	-
Third	116.92	1057.71	-	7	-	36	252	1*39.5 m2 toilet with HC toilet	-	-
Roof	120.56	91.44	-	-	-	-	-	-	-	-
Service Building	120.56	104.47	-	-	-	-	-	-	-	-
External Works	-	2685.9	-	-	-	-	-	-	-	-
<b>Total</b>		<b>7300.55</b>	<b>21</b>			<b>-</b>	<b>756</b>	<b>143.5</b>	<b>8.5</b>	<b>16.2</b>

□ Location Link:

[Thahr Al-Sarow Basic School for Boys](#)



## C- Jumana Bint Abi Taleb Basic Mixed School – Amman

The project consists of five floors building, with a total approximate are of 5460 m<sup>2</sup> in addition to site works deemed in the drawings and BOQ.

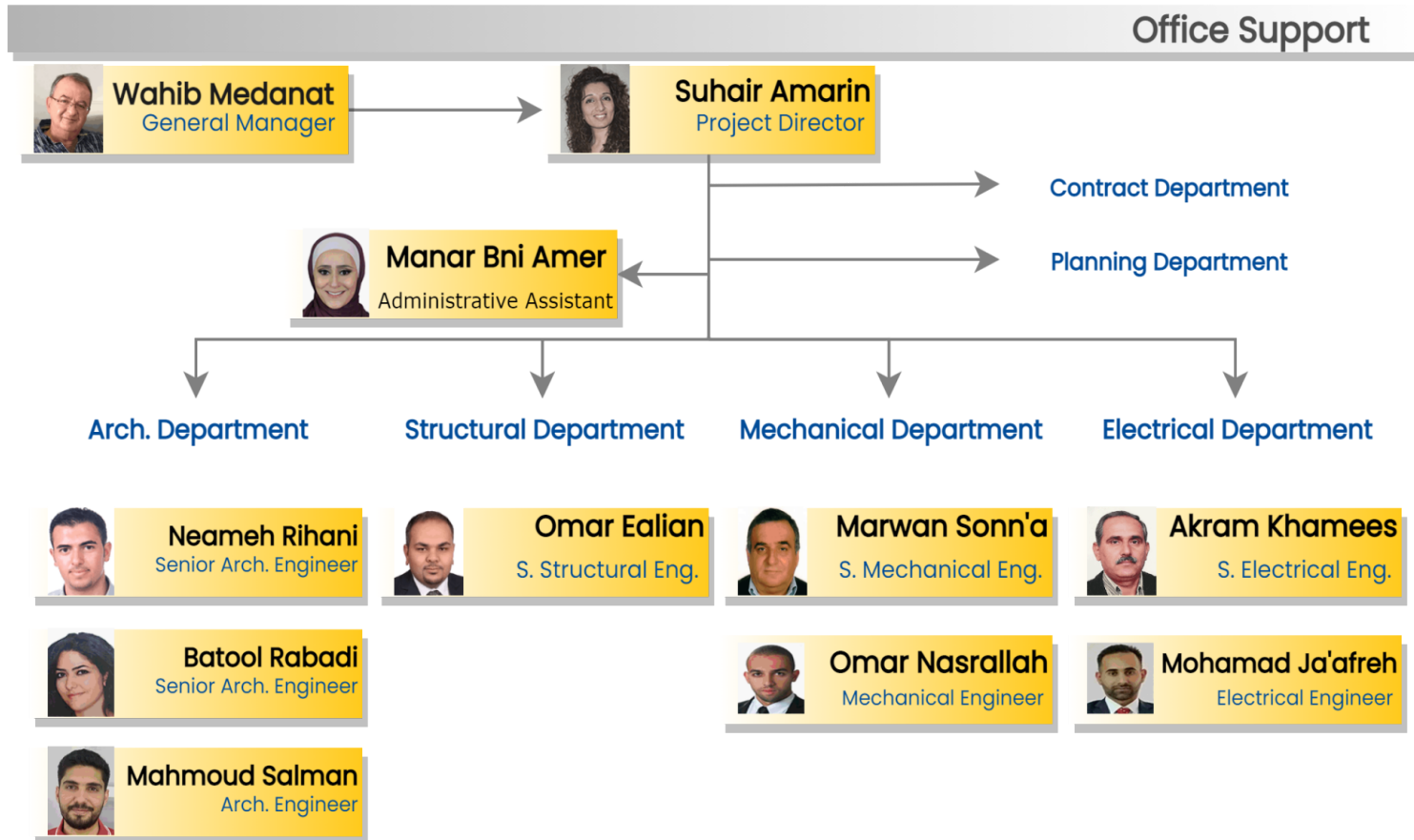
### Main Elements

Jumana Bint Abi Taleb Basic Mixed School										
Land Area =7556 m2			External Works = 5665 m2					no . of floor = 4		
Floor	F.F.L	Area (m2)	no.of classroom grade (1-3)	no.of classroom grade (4-10)	no . Of KG classroom m	student for each classroom m	student in floor	General Toilets	Mens Toilets	Womens Toilets
Basement	95.05	293.87	-	-	-	-	-	-	-	-
Ground	98.65	1891.29	-	-	4	24	96	2*26 m2 with HC toilet for each one	1*11 m2	1*11 m2
First	102.29	1591.17	9	-	-	36	324	-	1*17 m2 with 6 m2 HC toilet	1*22 m2 with janitor.
Second	105.93	1591.17	-	14	-	36	504	-	-	1*40 m2 with 6 m2 HC toilet 1*28 m2
Roof	109.57	73.1	-	-	-	-	-	-	-	-
External Works	-	5665	-	-	-	-	-	-	-	-
<b>Total</b>		<b>11105.6</b>		<b>27</b>		<b>-</b>	<b>924</b>	<b>52</b>	<b>34</b>	<b>107</b>

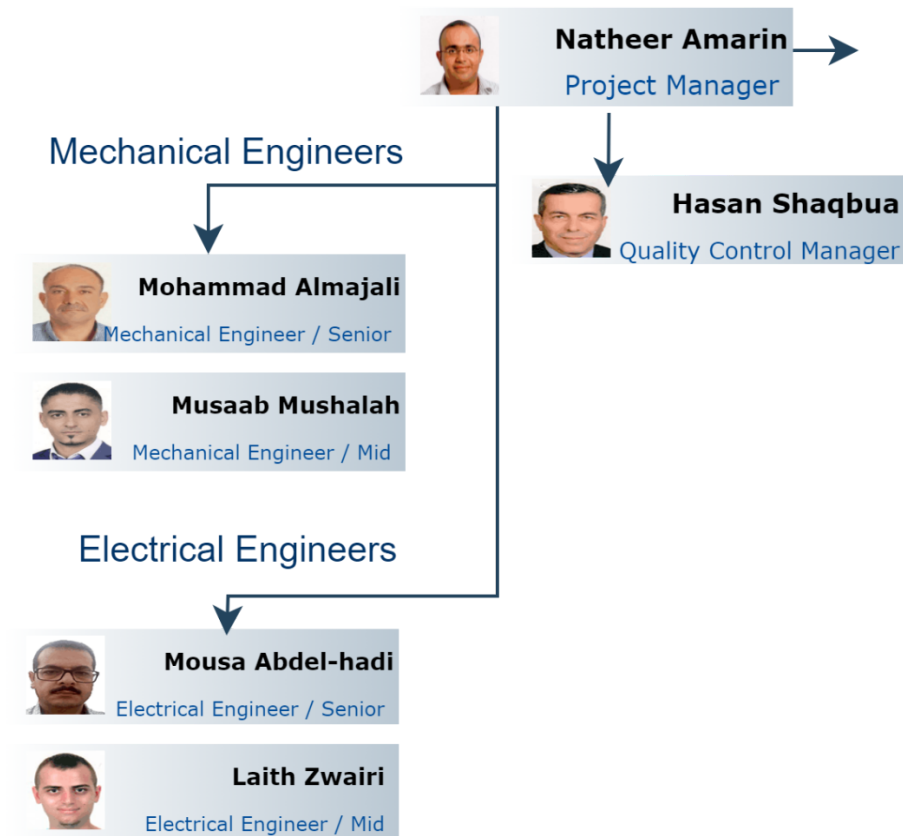
□ Location Link:

[Jumana Bint Abi-Taleb Basic Mixed School](#)

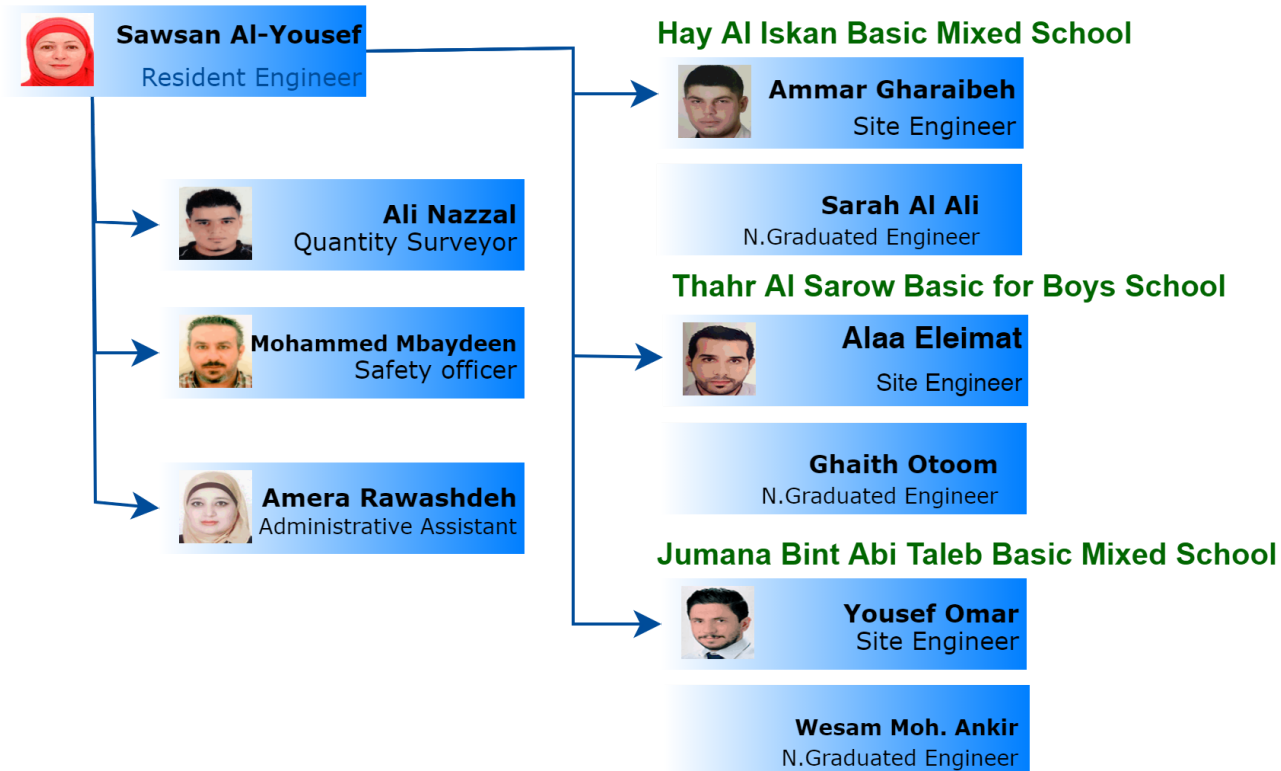
## 2 | Consultant Organization Project Staff



Package 1,2



Package 2



website Link: <https://www.medanat.site/skepiii-staff>

## 3 | Summary of Activities

### 3.1 Hay Al-Iskan Basic School Mixed School – Jerash

- [https://docs.google.com/spreadsheets/d/e/2PACX-1vRt5HXB5rY9FJFAKHq9Gzeg\\_qDyMchk6WxJglMk0khCx\\_jOve2owr4i71IKTGvJkDEmUWXsOyTrWQ/pubhtml?gid=0&single=true](https://docs.google.com/spreadsheets/d/e/2PACX-1vRt5HXB5rY9FJFAKHq9Gzeg_qDyMchk6WxJglMk0khCx_jOve2owr4i71IKTGvJkDEmUWXsOyTrWQ/pubhtml?gid=0&single=true)

### 3.2 Thahr Al-Sarow Basic School for Boys- Jerash

- [https://docs.google.com/spreadsheets/d/e/2PACX-1vRt5HXB5rY9FJFAKHq9Gzeg\\_qDyMchk6WxJglMk0khCx\\_jOve2owr4i71IKTGvJkDEmUWXsOyTrWQ/pubhtml?gid=834925315&single=true](https://docs.google.com/spreadsheets/d/e/2PACX-1vRt5HXB5rY9FJFAKHq9Gzeg_qDyMchk6WxJglMk0khCx_jOve2owr4i71IKTGvJkDEmUWXsOyTrWQ/pubhtml?gid=834925315&single=true)

### 3.3 Jumana Bint Abi-Taleb Basic Mixed School- Amman

- [https://docs.google.com/spreadsheets/d/e/2PACX-1vRt5HXB5rY9FJFAKHq9Gzeg\\_qDyMchk6WxJglMk0khCx\\_jOve2owr4i71IKTGvJkDEmUWXsOyTrWQ/pubhtml?gid=234544642&single=true](https://docs.google.com/spreadsheets/d/e/2PACX-1vRt5HXB5rY9FJFAKHq9Gzeg_qDyMchk6WxJglMk0khCx_jOve2owr4i71IKTGvJkDEmUWXsOyTrWQ/pubhtml?gid=234544642&single=true)

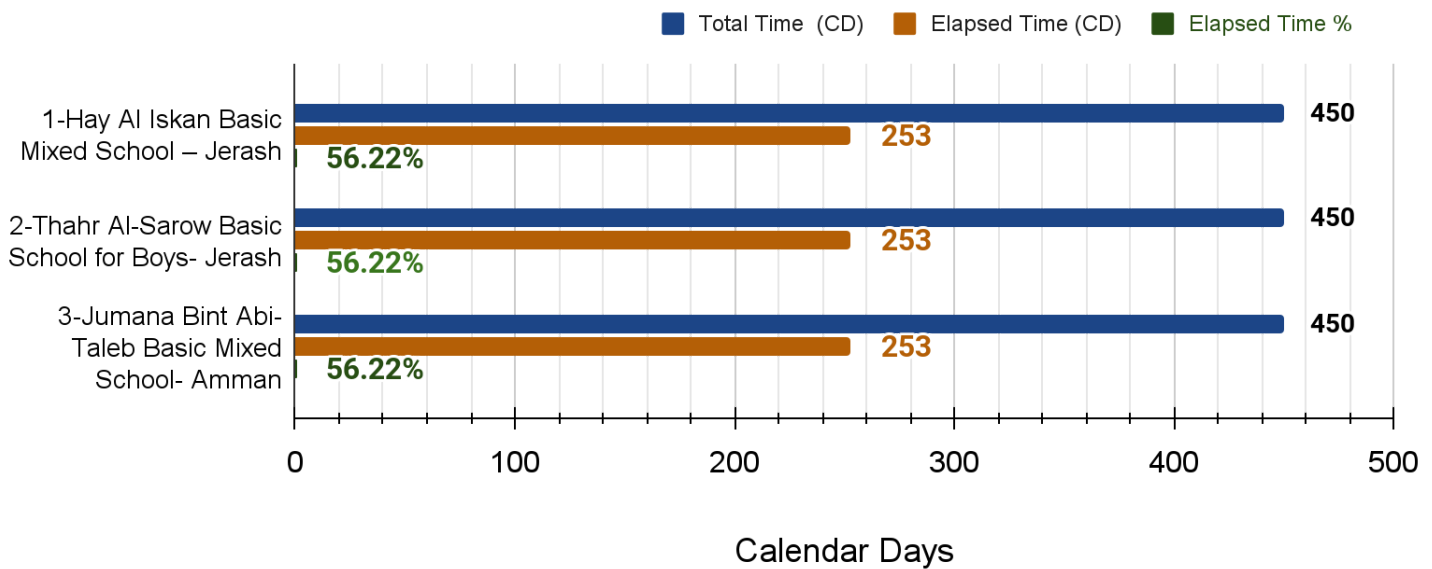
### 3.4 Mobilization Tracking Log

- [https://docs.google.com/spreadsheets/d/1\\_0ACM6FaK-0i1bdFAmqOu5sntUGrfGU9-eYXomGJpAA/edit?usp=sharing](https://docs.google.com/spreadsheets/d/1_0ACM6FaK-0i1bdFAmqOu5sntUGrfGU9-eYXomGJpAA/edit?usp=sharing)

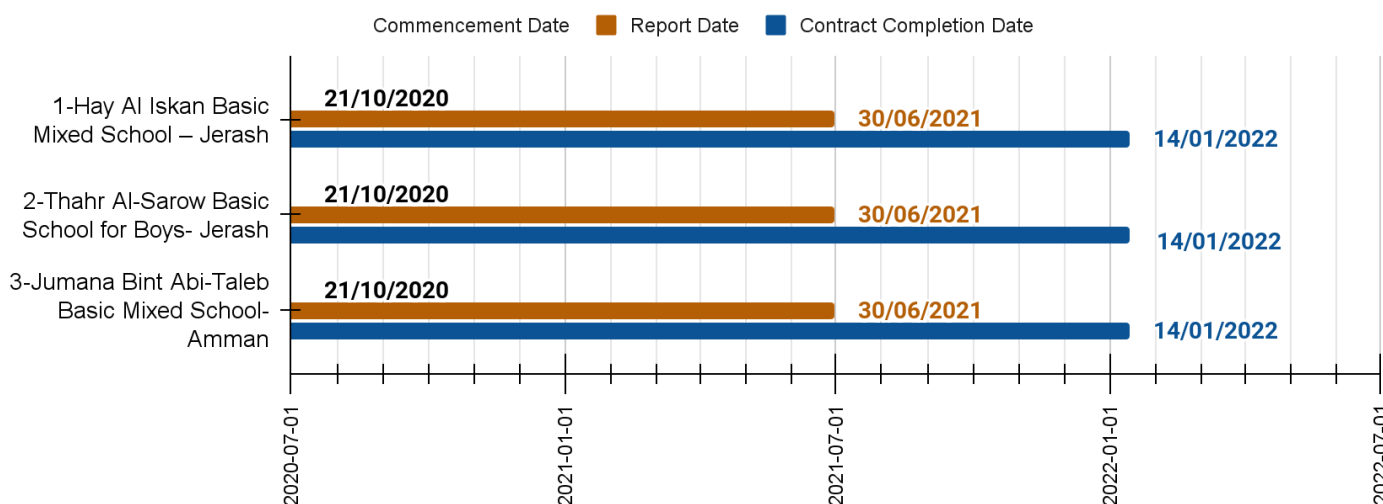
## 4 | Project Time and Duration

PGK 2 Report Date	2021-06-30				
Site Name	Contract Duration (CD)	Time Extension (CD)	Total Time (CD)	Elapsed Time (CD)	Elapsed Time %
1-Hay Al Iskan Basic Mixed School – Jerash	450	0	450	253	56.22%
2-Thahr Al-Sarow Basic School for Boys- Jerash	450	0	450	253	56.22%
3-Jumana Bint Abi-Taleb Basic Mixed School- Amman	450	0	450	253	56.22%

### SKEP III PKG 2 Time Chart



Site Name	Commencement Date	Report Date	Contract Completion Date
1-Hay Al Iskan Basic Mixed School – Jerash	2020-10-21	2021-06-30	2022-01-14
2-Thahr Al-Sarow Basic School for Boys- Jerash	2020-10-21	2021-06-30	2022-01-14
3-Jumana Bint Abi-Taleb Basic Mixed School- Amman	2020-10-21	2021-06-30	2022-01-14



## 5 | Project Contract & V.O's

Package 2 Contract & V.O's									
School Name	Contract Value JD		Provisional Sums JD		General Requirements JD		V.O.		Total Contract Value JD
	Original	After 1.5 % Deduction	Geotechnical Tests	Shoring	Value	After 1.5 % Deduction	V.O Description	Value JD	
Hay Al Iskan Basic Mixed School	2,686,848.000	2,646,545.280	11,000.000	82,500.000	45,900.000	45,211.500	Execution additional mechanical works/ Galvanized Pipes	2,180.000	2,787,436.780
Thahr Al Sarow Basic School	2,329,182.000	2,294,244.270	11,000.000	55,000.000	43,450.000	42,798.250	Cyclopean Concrete	4,531.000	2,442,824.150
							Additional Quantities	29,993.000	
							Relocation Water Tank	5,257.630	
Jumana Bint Abi Taleb Basic Mixed School	2,936,321.000	2,892,276.180	11,000.000	55,000.000	69,450.000	68,408.250	Cancellation of Sewage Connection Tank	-38,739.065	2,987,945.365
<b>Total</b>	<b>7,952,351.000</b>	<b>7,833,065.730</b>	<b>351,300.000</b>		<b>158,800.000</b>	<b>156,418.000</b>		<b>-36,559.065</b>	<b>8,178,424.665</b>
Provisional sum (Utilities)									100,000.000
<b>Total Amount</b>									<b>8,283,682.295</b>

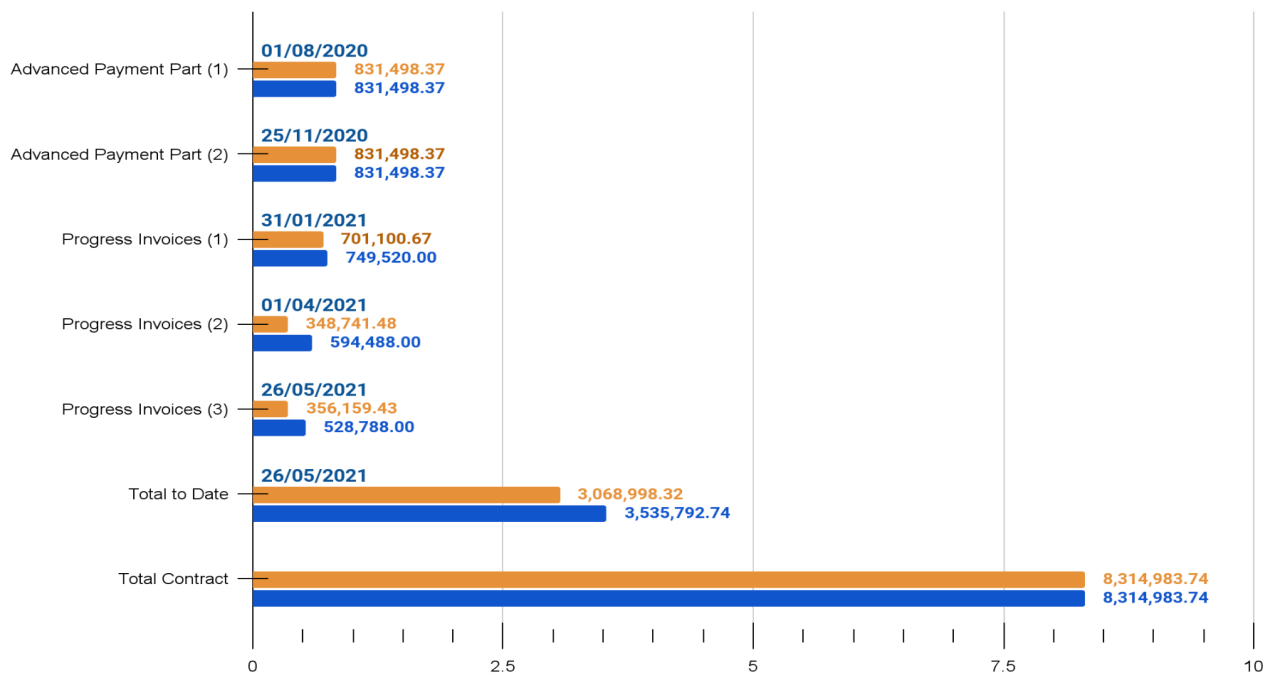


## 6 | Cash Flow

Package 2- Cash Flow			
Payment	Date of Payment	Actual Amount (JD)	Scheduled (JD)
Advanced Payment Part (1)	01/08/2020	831,498.37	831,498.37
Advanced Payment Part (2)	25/11/2020	831,498.37	831,498.37
Progress Invoices (1)	31/01/2021	701,100.67	749,520.00
Progress Invoices (2)	01/04/2021	348,741.48	594,488.00
Progress Invoices (3)	26/05/2021	356,159.43	528,788.00
<b>Total to Date</b>	<b>26/05/2021</b>	<b>3,068,998.32</b>	<b>3,535,792.74</b>
<b>Total Contract</b>		<b>8,314,983.74</b>	<b>8,314,983.74</b>

### Package 2- Cash Flow

Date of Payment    ■ Actual Amount (JD)    ■ Scheduled (JD)

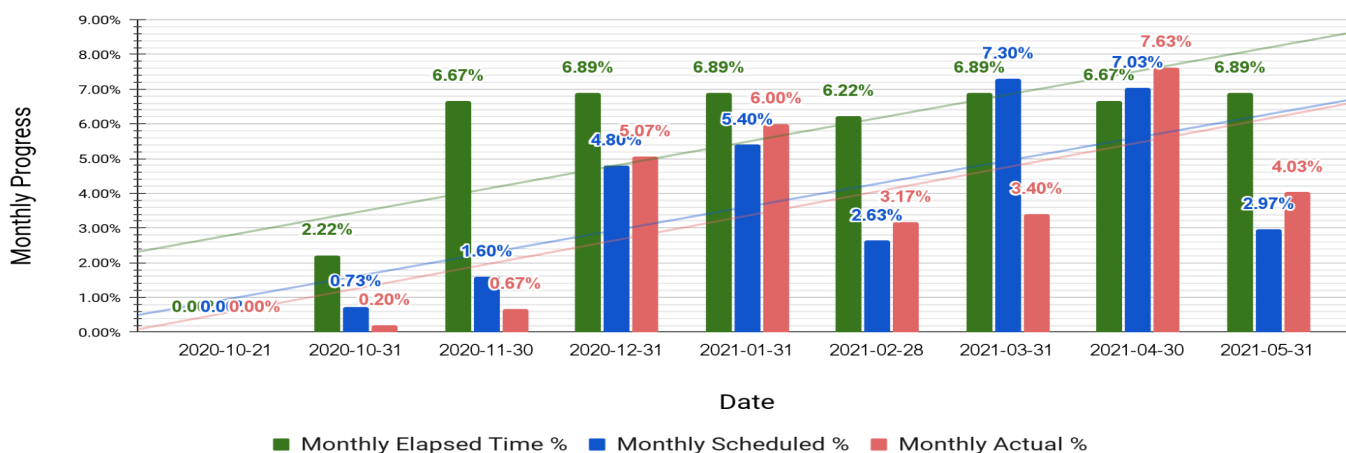


## 7 | Progress

### 7.1 Package 2 Average Progress

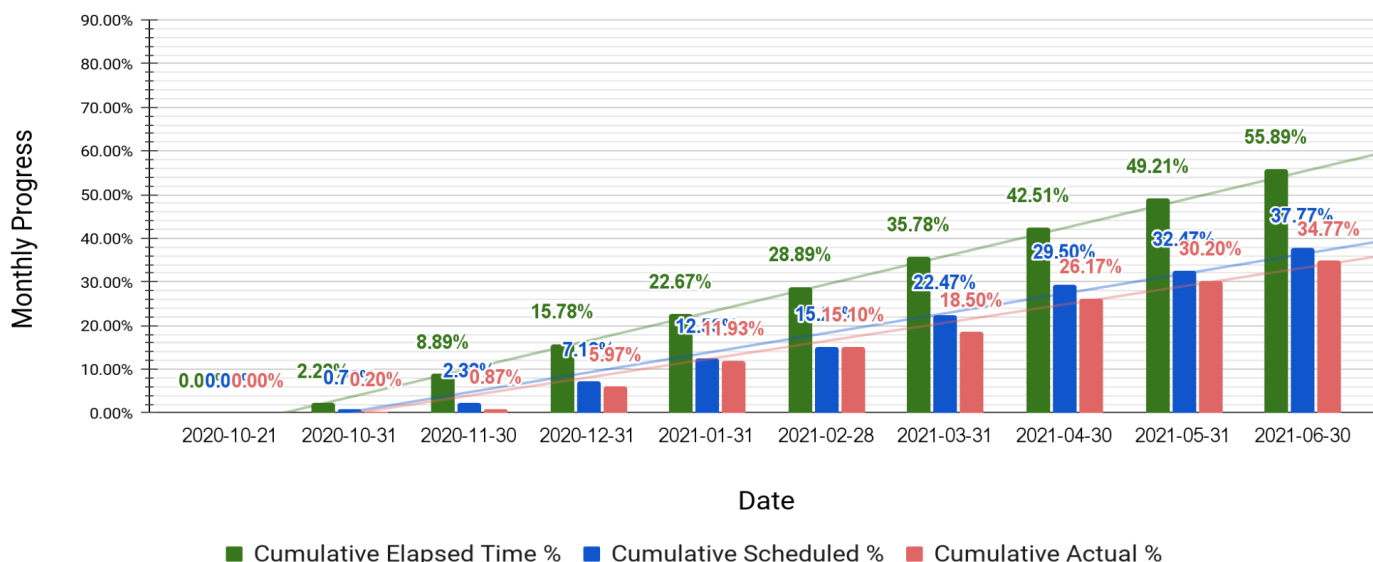
Package 2 Monthly Progress			
Date	Monthly Elapsed Time %	Monthly Scheduled %	Monthly Actual %
2020-10-21	0.00%	0.00%	0.00%
2020-10-31	2.22%	0.73%	0.20%
2020-11-30	6.67%	1.60%	0.67%
2020-12-31	6.89%	4.80%	5.07%
2021-01-31	6.89%	5.40%	6.00%
2021-02-28	6.22%	2.63%	3.17%
2021-03-31	6.89%	7.30%	3.40%
2021-04-30	6.67%	7.03%	7.63%
2021-05-31	6.89%	2.97%	4.03%
2021-06-30	6.67%	5.30%	4.57%

**Package 2  
 Monthly Progress**



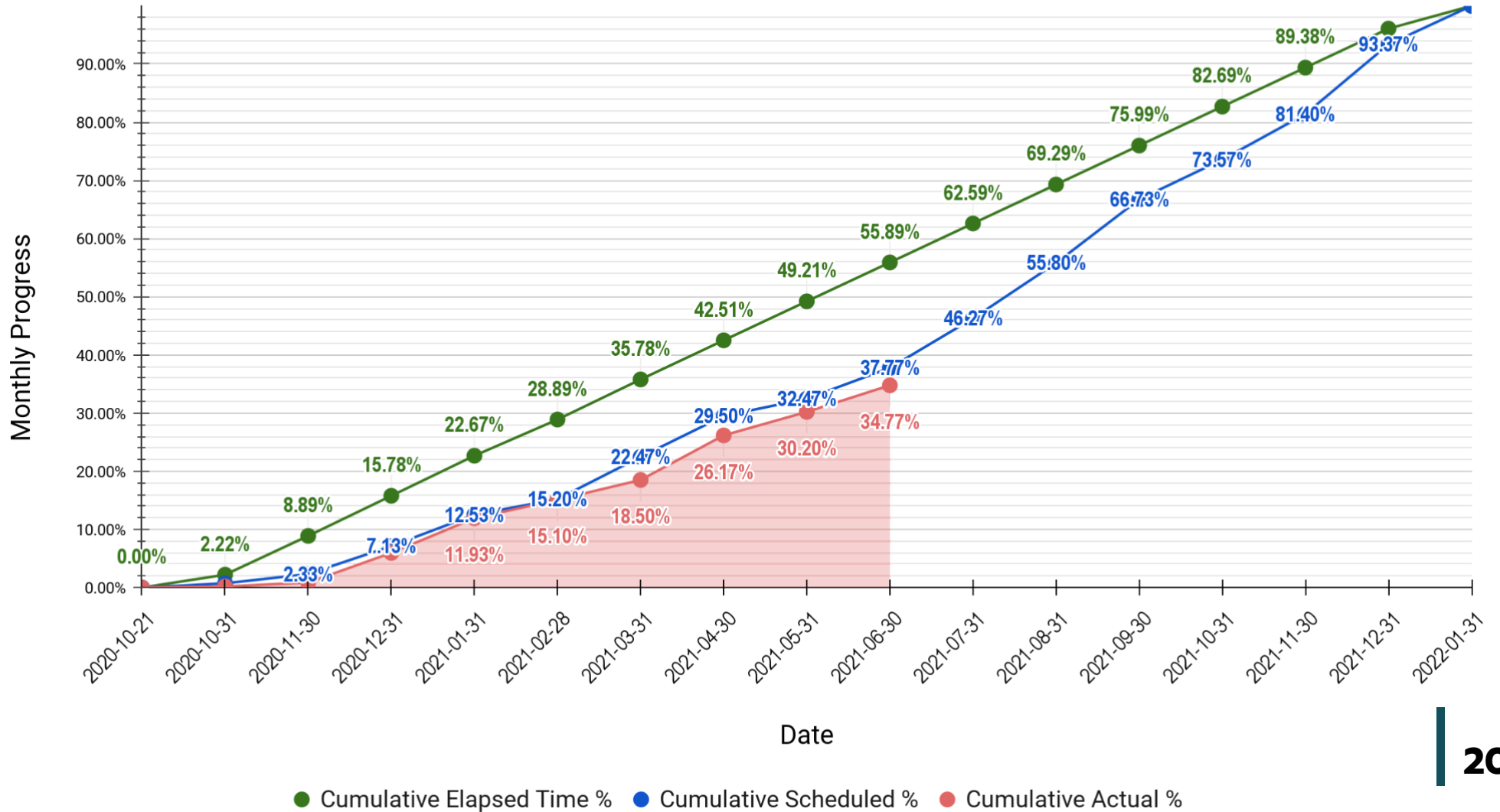
Package 2 Cumulative Progress			
Date	Cumulative Elapsed Time %	Cumulative Scheduled %	Cumulative Actual %
2020-10-21	0.00%	0.00%	0.00%
2020-10-31	2.22%	0.73%	0.20%
2020-11-30	8.89%	2.33%	0.87%
2020-12-31	15.78%	7.13%	5.97%
2021-01-31	22.67%	12.53%	11.93%
2021-02-28	28.89%	15.20%	15.10%
2021-03-31	35.78%	22.47%	18.50%
2021-04-30	42.51%	29.50%	26.17%
2021-05-31	49.21%	32.47%	30.20%
2021-06-30	55.89%	37.77%	34.77%

**PKG 2 Average For Three Sites**  
**Cumulative Progress**



**PKG 2 Average For Three Sites**

**Cumulative Progress**



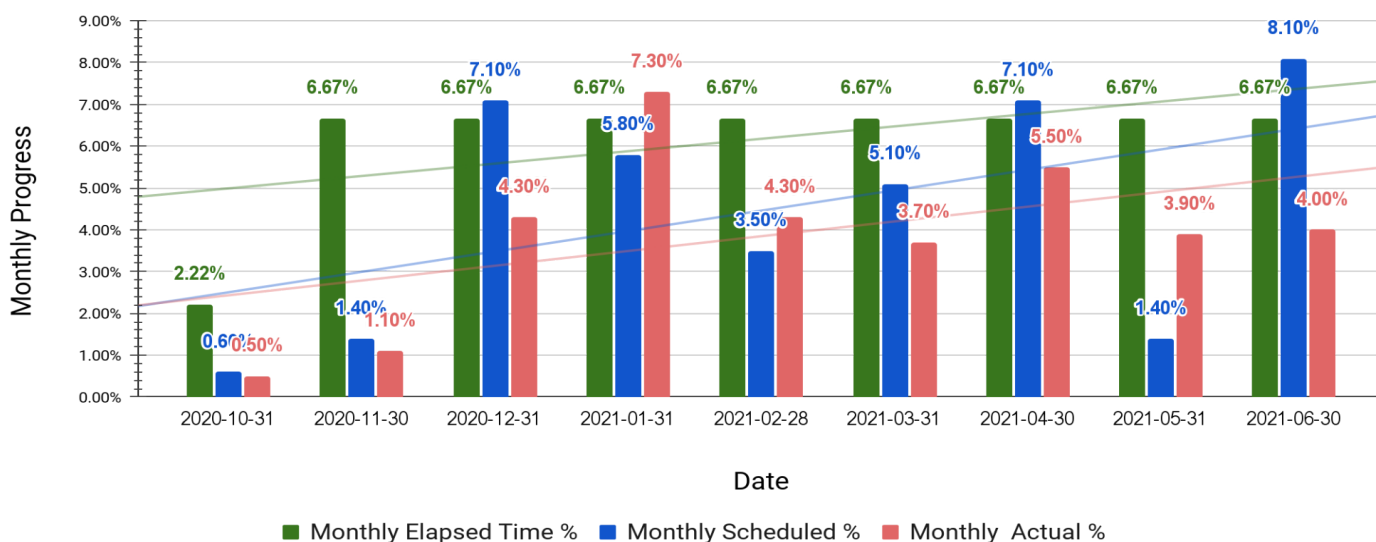
## 7.2 Hay Al Iskan Basic Mixed School – Jerash

Hay Al Iskan Basic mixed - Jerash Monthly Progress

Date	Monthly Elapsed Time %	Monthly Scheduled %	Monthly Actual %
2020-10-31	2.22%	0.60%	0.50%
2020-11-30	6.67%	1.40%	1.10%
2020-12-31	6.67%	7.10%	4.30%
2021-01-31	6.67%	5.80%	7.30%
2021-02-28	6.67%	3.50%	4.30%
2021-03-31	6.67%	5.10%	3.70%
2021-04-30	6.67%	7.10%	5.50%
2021-05-31	6.67%	1.40%	3.90%
2021-06-30	6.67%	8.10%	4.00%

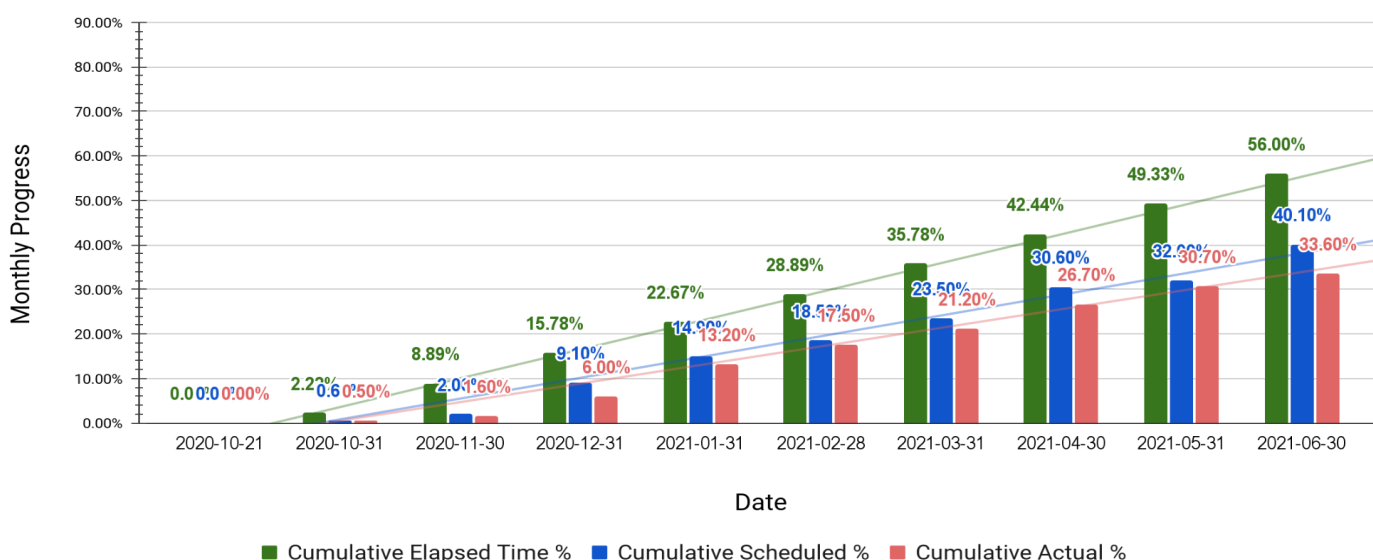
### PKG 2 Hay Al Iskan Basic mixed - Jerash

#### Monthly Progress



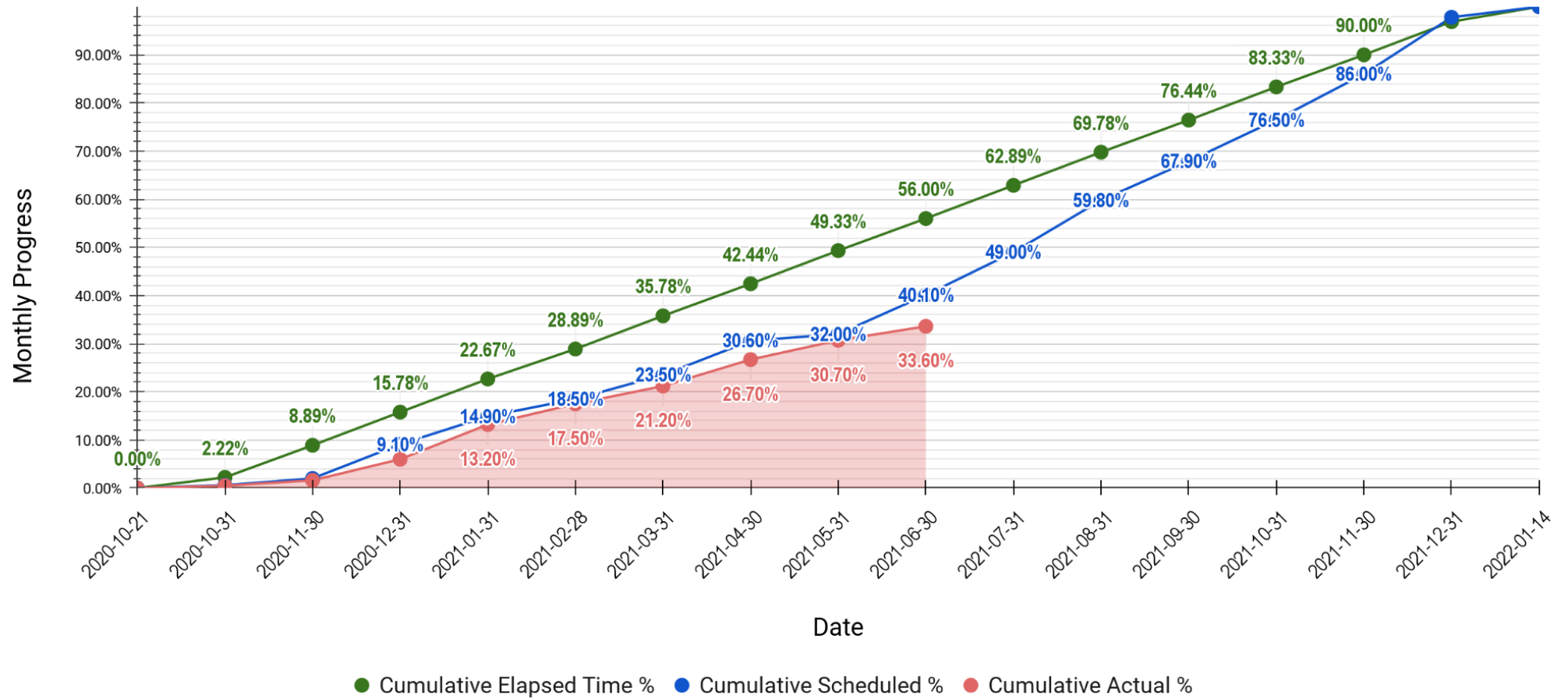
Hay Al Iskan Basic mixed - Jerash Cumulative Progress			
Date	Cumulative Elapsed Time %	Cumulative Scheduled %	Cumulative Actual %
2020-10-21	0.00%	0.00%	0.00%
2020-10-31	2.22%	0.60%	0.50%
2020-11-30	8.89%	2.00%	1.60%
2020-12-31	15.78%	9.10%	6.00%
2021-01-31	22.67%	14.90%	13.20%
2021-02-28	28.89%	18.50%	17.50%
2021-03-31	35.78%	23.50%	21.20%
2021-04-30	42.44%	30.60%	26.70%
2021-05-31	49.33%	32.00%	30.70%
2021-06-30	56.00%	40.10%	33.60%

**PKG 2 Hay Al Iskan Basic mixed - Jerash**  
**Cumulative Progress**



**PKG 2 Hay Al Iskan Basic mixed - Jerash**

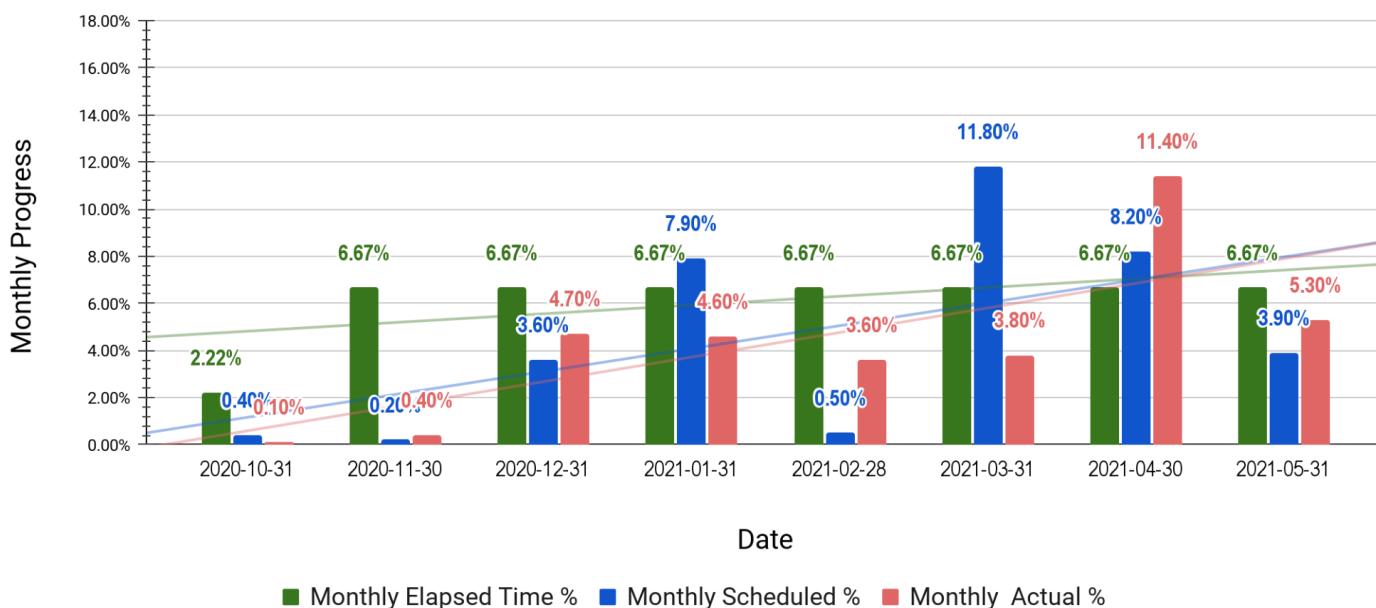
**Cumulative Progress**



### 7.3 Thahr Al-Sarow Basic School for Boys- Jerash

Thahr Al-Sarow Basic School for Boys- Jerash Monthly Progress			
Date	Monthly Elapsed Time %	Monthly Scheduled %	Monthly Actual %
2020-10-31	2.22%	0.40%	0.10%
2020-11-30	6.67%	0.20%	0.40%
2020-12-31	6.67%	3.60%	4.70%
2021-01-31	6.67%	7.90%	4.60%
2021-02-28	6.67%	0.50%	3.60%
2021-03-31	6.67%	11.80%	3.80%
2021-04-30	6.67%	8.20%	11.40%
2021-05-31	6.67%	3.90%	5.30%
2021-06-30	6.67%	0.80%	5.30%

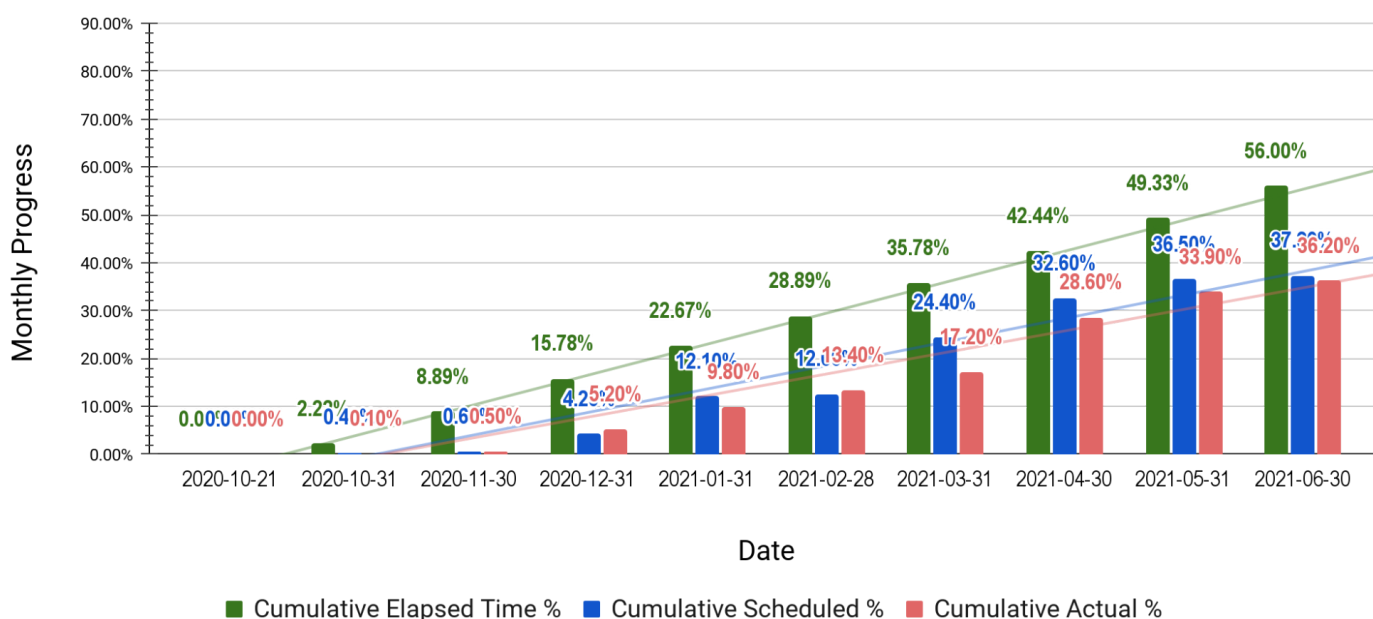
#### PKG 2 Thahr Al Sarow Basic Boys - Jerash Monthly Progress



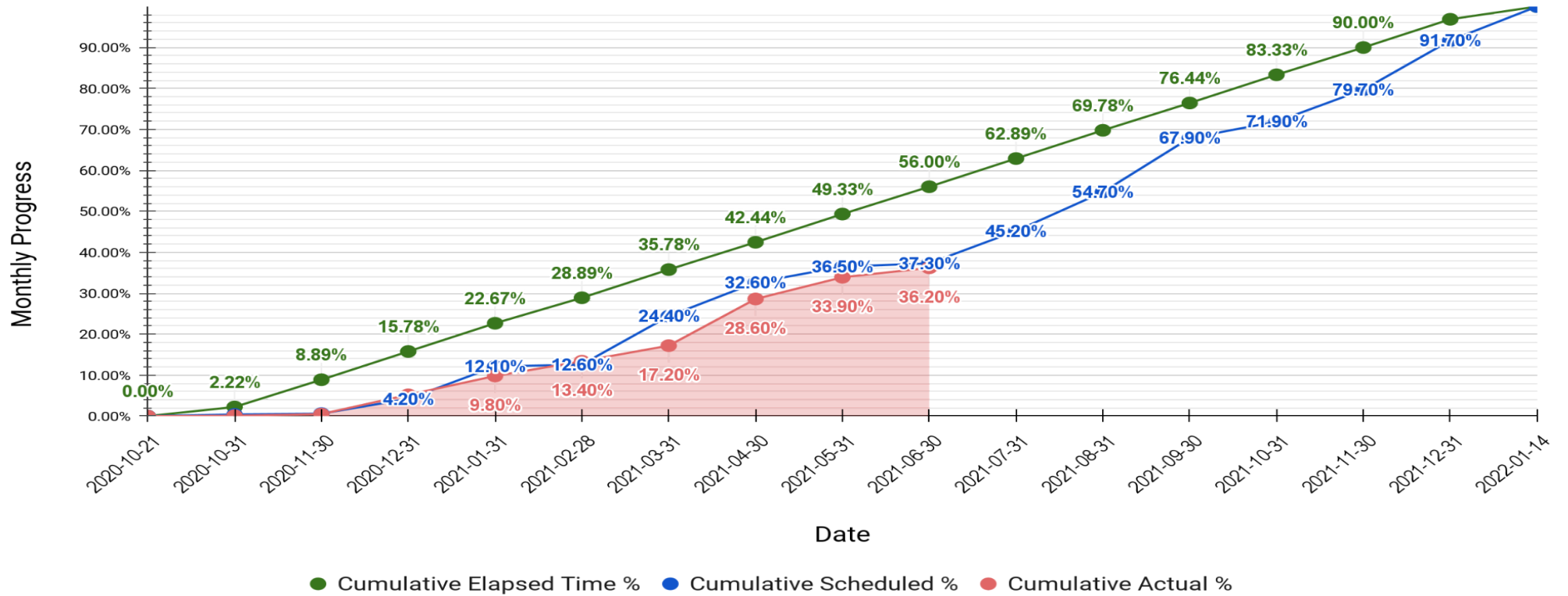


Thahr Al-Sarow Basic School for Boys- Jerash Cumulative Progress			
Date	Cumulative Elapsed Time %	Cumulative Scheduled %	Cumulative Actual %
2020-10-21	0.00%	0.00%	0.00%
2020-10-31	2.22%	0.40%	0.10%
2020-11-30	8.89%	0.60%	0.50%
2020-12-31	15.78%	4.20%	5.20%
2021-01-31	22.67%	12.10%	9.80%
2021-02-28	28.89%	12.60%	13.40%
2021-03-31	35.78%	24.40%	17.20%
2021-04-30	42.44%	32.60%	28.60%
2021-05-31	49.33%	36.50%	33.90%
2021-06-30	56.00%	37.30%	36.20%

### PKG 2 Thahr Al Sarow Basic Boys - Jerash Cumulative Progress



**PKG 2 Thahr Al Sarow Basic Boys - Jerash**  
**Cumulative Progress**

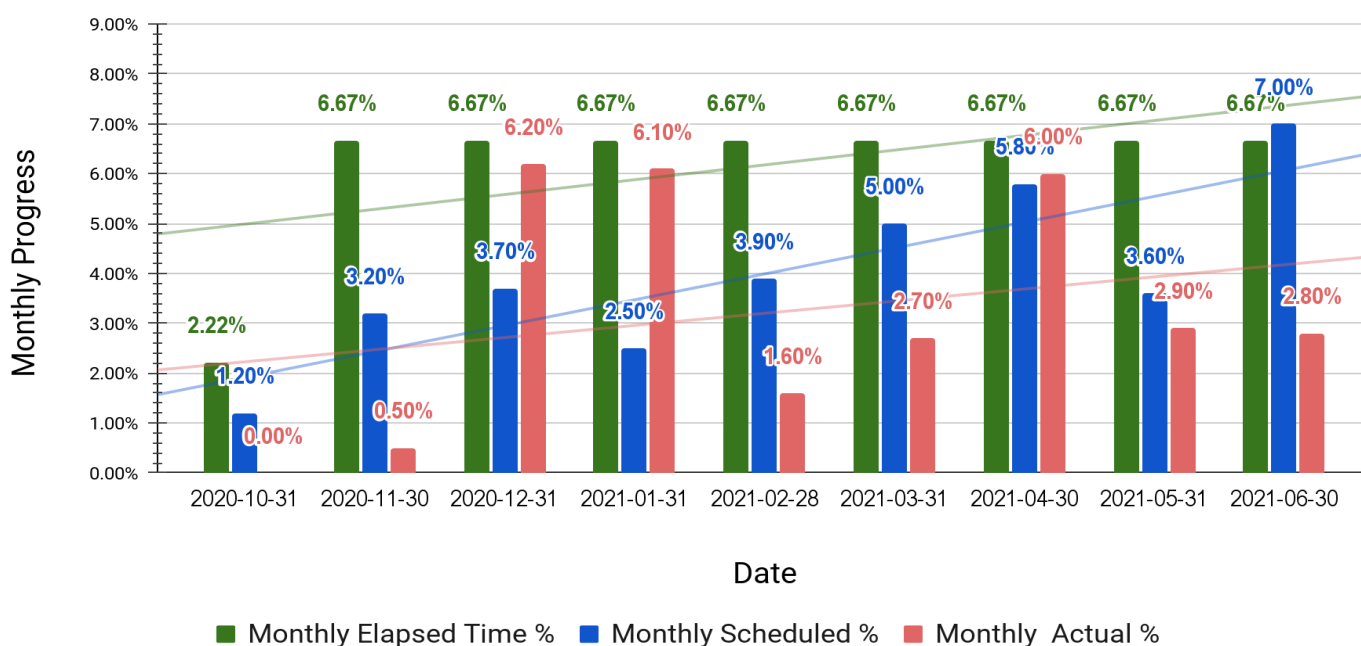


### 7.4 Jumana Bint Abi-Taleb Basic Mixed School- Amman

Jumana Bint Abi-Taleb Basic Mixed School- Amman Monthly Progress			
Date	Monthly Elapsed Time %	Monthly Scheduled %	Monthly Actual %
2020-10-31	2.22%	1.20%	0.00%
2020-11-30	6.67%	3.20%	0.50%
2020-12-31	6.67%	3.70%	6.20%
2021-01-31	6.67%	2.50%	6.10%
2021-02-28	6.67%	3.90%	1.60%
2021-03-31	6.67%	5.00%	2.70%
2021-04-30	6.67%	5.80%	6.00%
2021-05-31	6.67%	3.60%	2.90%
2021-06-30	6.67%	7.00%	2.80%

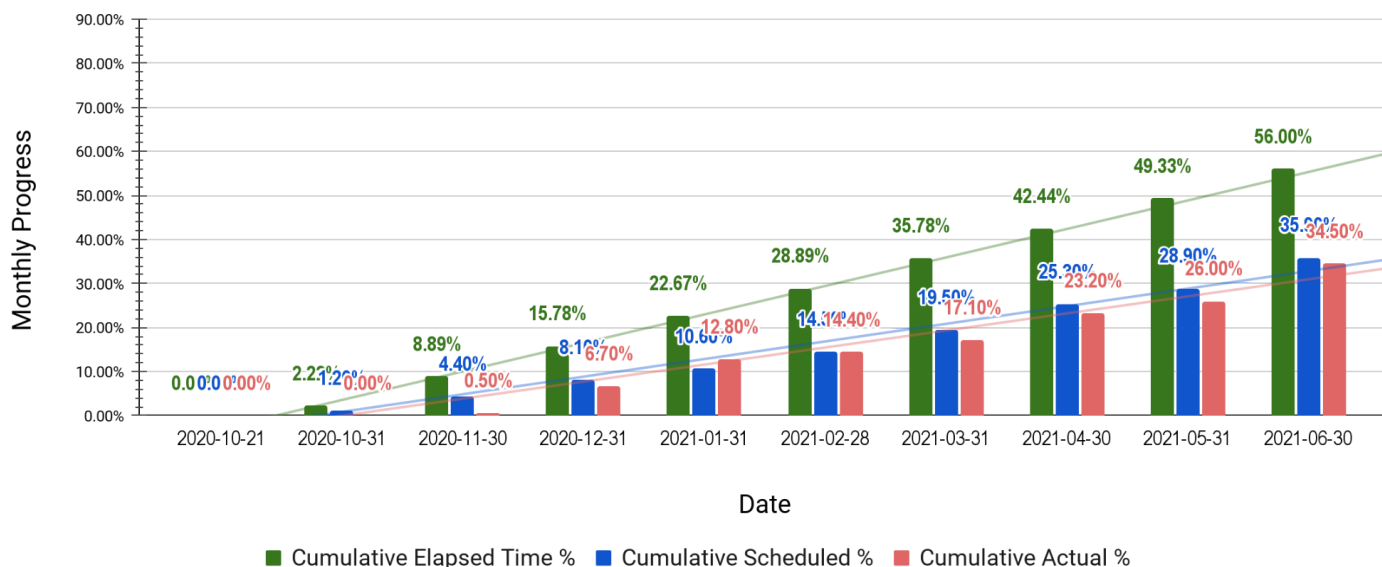
### PKG 2 Jumana Bint Abi Taleb Basic Mixed - Marka

#### Monthly Progress



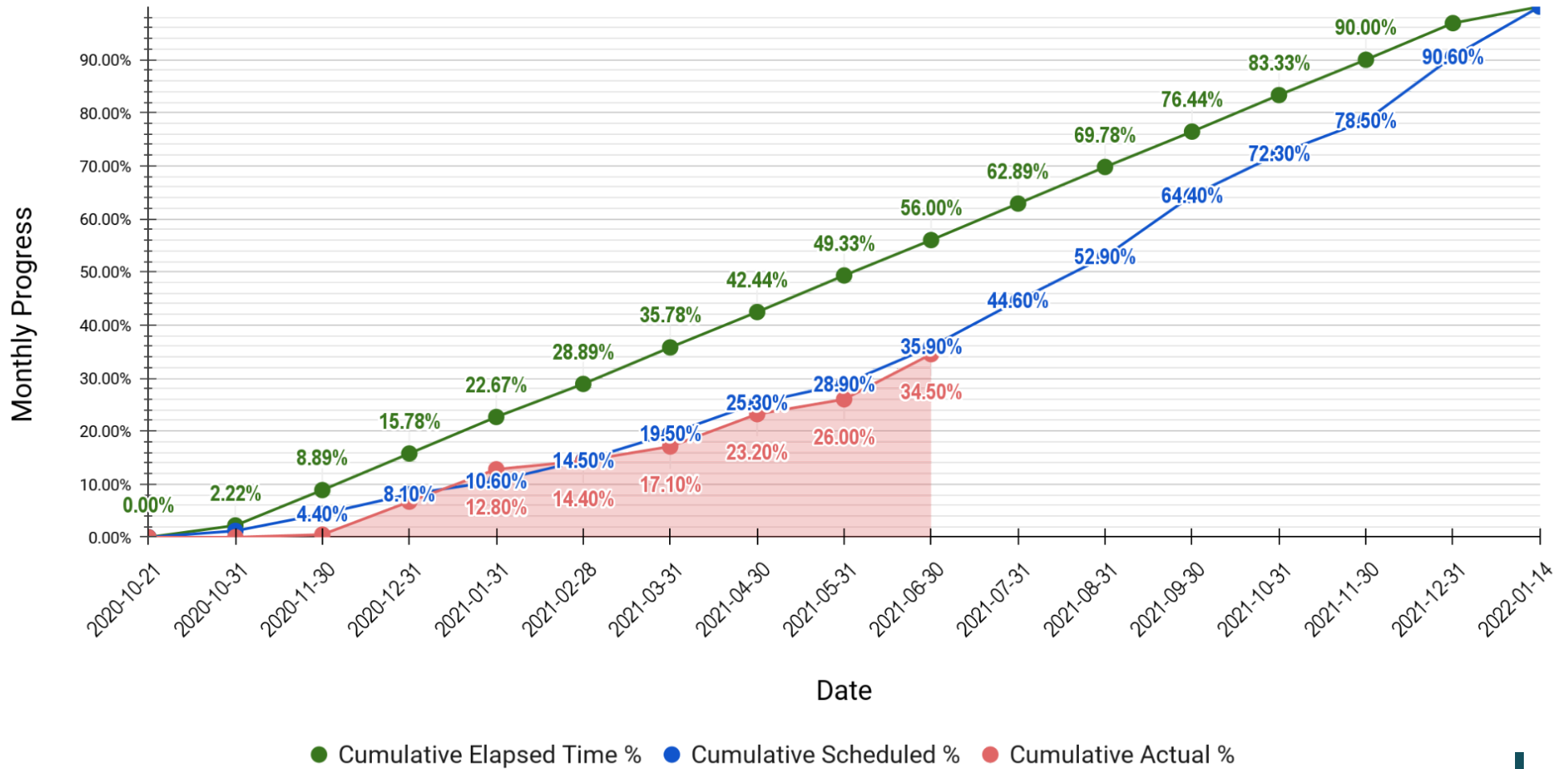
Jumana Bint Abi-Taleb Basic Mixed School- Amman Cumulative Progress			
Date	Cumulative Elapsed Time %	Cumulative Scheduled %	Cumulative Actual %
2020-10-21	0.00%	0.00%	0.00%
2020-10-31	2.22%	1.20%	0.00%
2020-11-30	8.89%	4.40%	0.50%
2020-12-31	15.78%	8.10%	6.70%
2021-01-31	22.67%	10.60%	12.80%
2021-02-28	28.89%	14.50%	14.40%
2021-03-31	35.78%	19.50%	17.10%
2021-04-30	42.44%	25.30%	23.20%
2021-05-31	49.33%	28.90%	26.00%
2021-06-30	56.00%	35.90%	34.50%

**PKG 2 Jumana Bint Abi Taleb Basic Mixed - Marka**  
**Cumulative Progress**



**PKG 2 Jumana Bint Abi Taleb Basic Mixed - Marka**

**Cumulative Progress**



## 7.5 Engineer comments on work progress

### A. Average for the three schools:

The cumulative progress -as average- for the three schools at the end of this month:

Date	Cumulative Elapsed Time %	Cumulative Scheduled %	Cumulative Actual %
2021-06-30	55.89%	37.77%	34.77%

The difference Between Scheduled and Actual is **-3.00%**

### B. Hay Al Iskan Basic Mixed School:

The cumulative progress -as average- for the three schools at the end of this month:

Date	Cumulative Elapsed Time %	Cumulative Scheduled %	Cumulative Actual %
2021-06-30	56.00%	40.10%	33.60%

The difference Between Scheduled and Actual is **-6.50%**

### C. Thahr Al Sarow Basic School for Boys:

The cumulative progress -as average- for the three schools at the end of this month:

Date	Cumulative Elapsed Time %	Cumulative Scheduled %	Cumulative Actual %
2021-06-30	56.00%	37.30%	36.20%

The difference Between Scheduled and Actual is **-1.10%**

**D. Jumana Bint Abi Taleb Basic Mixed School:**

The cumulative progress -as average- for the three schools at the end of this month:

Date	Cumulative Elapsed Time %	Cumulative Scheduled %	Cumulative Actual %
2021-06-30	56.00%	35.90%	34.50%

**The difference Between Scheduled and Actual is -1.40%**

In accordance with the above, the contractor will be drawn to override the delay at the end of this month, to approach the cumulative progress scheduled at the end of next month.

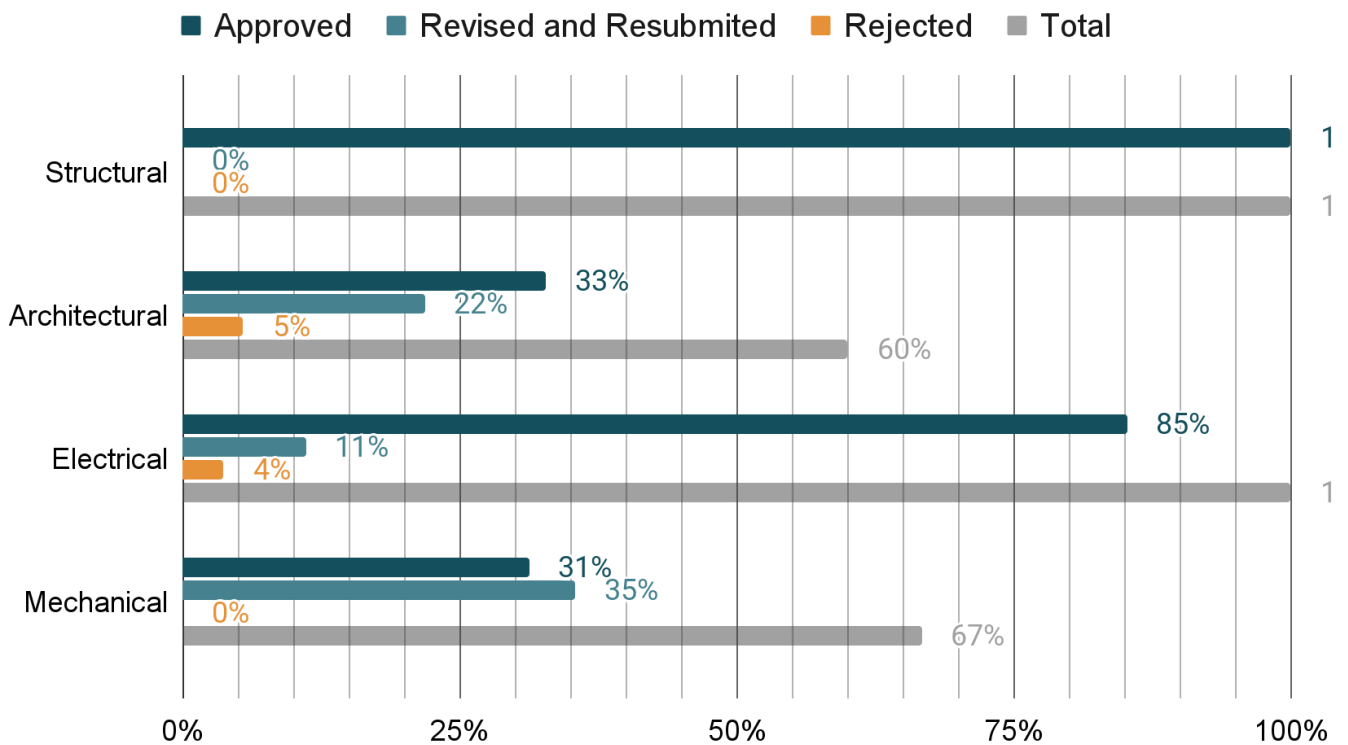
## 8 Submitted Materials

### 8.1 Summary of Submitted Materials

PKG 2 Summary of Submitted Materials				
Item	Total No. of Materials to be Submitted	Total No. of Submitted Materials	Submitted Materials (%)	Non Submitted Materials (%)
Structural	20	20	100%	0%
Architectural	55	33	60%	40%
Electrical	27	27	100%	0%
Mechanical	48	32	67%	33%
PKG 1 Summary of Submitted Materials (No.)				
Item	Approved	Revised and Resubmitted	Rejected	Total
Structural	20	0	0	20
Architectural	18	12	3	33
Electrical	23	3	1	27
Mechanical	15	17	0	32
PKG 1 Summary of Submitted Materials (%)				
Item	Approved	Revised and Resubmitted	Rejected	Total
Structural	100%	0%	0%	100%
Architectural	33%	22%	5%	60%
Electrical	85%	11%	4%	100%



**PKG 2 Summary of Submitted Materials**



**8.2 Shop Drawings & Submittal Tracking LOG**

- <https://docs.google.com/spreadsheets/d/1bnyszO2Emw3hTFElaHMOLlw9iblo-WKfNEWYNY-xYR4/edit?usp=sharing>

**8.3 Materials Submittal Vendor List**

- [https://docs.google.com/spreadsheets/d/1z95fQHYz9ah7HI\\_CVuYooy0ZK\\_yisP7BjN6OU-FOr7s/edit?usp=sharing](https://docs.google.com/spreadsheets/d/1z95fQHYz9ah7HI_CVuYooy0ZK_yisP7BjN6OU-FOr7s/edit?usp=sharing)

## 9 | Correspondence Tracking Logs

- ❑ <https://docs.google.com/spreadsheets/d/1BttZK6OGZ9D25Fk7Rrisz9IB5n0DdLuigz7iGDAHaEq/edit?usp=sharing>

## 10 | Non-conformance Report Tracking Log

### 10.1 HSE

- ❑ <https://docs.google.com/spreadsheets/d/1k55vseDsjKCPXpSiAc-fgq1KrhQsZTepzhee-WJZuJA/edit?usp=sharing>

### 10.2 QCs

#### Hay Al Iskan Basic Mixed School- Jerash

- ❑ [https://b9686515-2954-4919-832c-2c36b1d1850f.filesusr.com/ugd/c80178\\_1807f10908b047519122e3813f3c27cd.pdf](https://b9686515-2954-4919-832c-2c36b1d1850f.filesusr.com/ugd/c80178_1807f10908b047519122e3813f3c27cd.pdf)
- ❑ [https://b9686515-2954-4919-832c-2c36b1d1850f.filesusr.com/ugd/c80178\\_07c4698c05c04073b2e0938edbd5dcbf.pdf](https://b9686515-2954-4919-832c-2c36b1d1850f.filesusr.com/ugd/c80178_07c4698c05c04073b2e0938edbd5dcbf.pdf)
- ❑ [https://b9686515-2954-4919-832c-2c36b1d1850f.filesusr.com/ugd/c80178\\_06a4594cc4e04748a18575ddb2d8f82a.pdf](https://b9686515-2954-4919-832c-2c36b1d1850f.filesusr.com/ugd/c80178_06a4594cc4e04748a18575ddb2d8f82a.pdf)
- ❑ [https://b9686515-2954-4919-832c-2c36b1d1850f.filesusr.com/ugd/c80178\\_9eafd88075f7417288edb3817a3e4746.pdf](https://b9686515-2954-4919-832c-2c36b1d1850f.filesusr.com/ugd/c80178_9eafd88075f7417288edb3817a3e4746.pdf)
- ❑ [https://b9686515-2954-4919-832c-2c36b1d1850f.filesusr.com/ugd/c80178\\_8fcd35c7c6424910b328787b791d40bc.pdf](https://b9686515-2954-4919-832c-2c36b1d1850f.filesusr.com/ugd/c80178_8fcd35c7c6424910b328787b791d40bc.pdf)
- ❑ [https://b9686515-2954-4919-832c-2c36b1d1850f.filesusr.com/ugd/bed180\\_84a170750f4d4c398a0b60e66cce9dff.pdf](https://b9686515-2954-4919-832c-2c36b1d1850f.filesusr.com/ugd/bed180_84a170750f4d4c398a0b60e66cce9dff.pdf)

- ❑ [https://b9686515-2954-4919-832c-2c36b1d1850f.filesusr.com/ugd/bed180\\_10c3d6d0575b42c098496dcb0468e44b.pdf](https://b9686515-2954-4919-832c-2c36b1d1850f.filesusr.com/ugd/bed180_10c3d6d0575b42c098496dcb0468e44b.pdf)
- ❑ [https://b9686515-2954-4919-832c-2c36b1d1850f.filesusr.com/ugd/bed180\\_75f01267783a4dd0bee5139487faca25.pdf](https://b9686515-2954-4919-832c-2c36b1d1850f.filesusr.com/ugd/bed180_75f01267783a4dd0bee5139487faca25.pdf)
- ❑ [https://b9686515-2954-4919-832c-2c36b1d1850f.filesusr.com/ugd/bed180\\_4145bb3def724fb1ab1625b904abc8c8.pdf](https://b9686515-2954-4919-832c-2c36b1d1850f.filesusr.com/ugd/bed180_4145bb3def724fb1ab1625b904abc8c8.pdf)

## Thahr Al Sarow Basic School for Boys- Jerash

- ❑ [https://b9686515-2954-4919-832c-2c36b1d1850f.filesusr.com/ugd/c80178\\_8421931f3724460ca09965cf4d6d9115.pdf](https://b9686515-2954-4919-832c-2c36b1d1850f.filesusr.com/ugd/c80178_8421931f3724460ca09965cf4d6d9115.pdf)
- ❑ [https://b9686515-2954-4919-832c-2c36b1d1850f.filesusr.com/ugd/bed180\\_4e39aa4d5be1410d87be252ead3e9e98.pdf](https://b9686515-2954-4919-832c-2c36b1d1850f.filesusr.com/ugd/bed180_4e39aa4d5be1410d87be252ead3e9e98.pdf)
- ❑ [https://b9686515-2954-4919-832c-2c36b1d1850f.filesusr.com/ugd/bed180\\_2aeeb4363fa14289a2483f4713c719b2.pdf](https://b9686515-2954-4919-832c-2c36b1d1850f.filesusr.com/ugd/bed180_2aeeb4363fa14289a2483f4713c719b2.pdf)
- ❑ [https://b9686515-2954-4919-832c-2c36b1d1850f.filesusr.com/ugd/bed180\\_797572bf286e43c3b29067146b4d27bd.pdf](https://b9686515-2954-4919-832c-2c36b1d1850f.filesusr.com/ugd/bed180_797572bf286e43c3b29067146b4d27bd.pdf)

## Jumana Bint Abi Taleb Basic Mixed School- Amman

- ❑ [https://b9686515-2954-4919-832c-2c36b1d1850f.filesusr.com/ugd/c80178\\_bb8c0e1f43ee4391b5f5129428f6ab57.pdf](https://b9686515-2954-4919-832c-2c36b1d1850f.filesusr.com/ugd/c80178_bb8c0e1f43ee4391b5f5129428f6ab57.pdf)
- ❑ [https://b9686515-2954-4919-832c-2c36b1d1850f.filesusr.com/ugd/c80178\\_6c89b62dfc12458e8bc2b6ff36d7567f.pdf](https://b9686515-2954-4919-832c-2c36b1d1850f.filesusr.com/ugd/c80178_6c89b62dfc12458e8bc2b6ff36d7567f.pdf)
- ❑ [https://b9686515-2954-4919-832c-2c36b1d1850f.filesusr.com/ugd/c80178\\_2af7ede34fa242658247977cfd8eed00.pdf](https://b9686515-2954-4919-832c-2c36b1d1850f.filesusr.com/ugd/c80178_2af7ede34fa242658247977cfd8eed00.pdf)
- ❑ [https://b9686515-2954-4919-832c-2c36b1d1850f.filesusr.com/ugd/bed180\\_92ff895cf7d7414fa2aff0238a5963d3.pdf](https://b9686515-2954-4919-832c-2c36b1d1850f.filesusr.com/ugd/bed180_92ff895cf7d7414fa2aff0238a5963d3.pdf)

- ❑ [https://b9686515-2954-4919-832c-2c36b1d1850f.filesusr.com/ugd/bed180\\_df37b3f79bf54db9974d7ccc15d1f9af.pdf](https://b9686515-2954-4919-832c-2c36b1d1850f.filesusr.com/ugd/bed180_df37b3f79bf54db9974d7ccc15d1f9af.pdf)

### 10.3 NCRs

- ❑ [https://docs.google.com/spreadsheets/d/e/2PACX-1vRCdhdyMg2w7aub85wSr2x5zVoAH\\_N-j5dXUIHAXnV2u\\_W\\_I6\\_KaM6lopckv70ENfSGggpujJEQwkY8/pubhtml?gid=1457468755&single=true](https://docs.google.com/spreadsheets/d/e/2PACX-1vRCdhdyMg2w7aub85wSr2x5zVoAH_N-j5dXUIHAXnV2u_W_I6_KaM6lopckv70ENfSGggpujJEQwkY8/pubhtml?gid=1457468755&single=true)
- ❑ [https://docs.google.com/spreadsheets/d/e/2PACX-1vRCdhdyMg2w7aub85wSr2x5zVoAH\\_N-j5dXUIHAXnV2u\\_W\\_I6\\_KaM6lopckv70ENfSGggpujJEQwkY8/pubhtml?gid=1351232002&single=true](https://docs.google.com/spreadsheets/d/e/2PACX-1vRCdhdyMg2w7aub85wSr2x5zVoAH_N-j5dXUIHAXnV2u_W_I6_KaM6lopckv70ENfSGggpujJEQwkY8/pubhtml?gid=1351232002&single=true)
- ❑ [https://docs.google.com/spreadsheets/d/e/2PACX-1vRCdhdyMg2w7aub85wSr2x5zVoAH\\_N-j5dXUIHAXnV2u\\_W\\_I6\\_KaM6lopckv70ENfSGggpujJEQwkY8/pubhtml?gid=131850383&single=true](https://docs.google.com/spreadsheets/d/e/2PACX-1vRCdhdyMg2w7aub85wSr2x5zVoAH_N-j5dXUIHAXnV2u_W_I6_KaM6lopckv70ENfSGggpujJEQwkY8/pubhtml?gid=131850383&single=true)

## 11 | Request For Information Tracking Logs

### 11.1 RFIs-Designer

- ❑ <https://docs.google.com/spreadsheets/d/14R8k9OEQWmi8PpbZODMExpbFrBIRZvvpPP2d3SXBDE/edit?usp=sharing>

### 11.2 RFIs-Contractor

- ❑ [https://docs.google.com/spreadsheets/d/1jyr5-ziRLWbn\\_RI5fliADVzIfWlrc72a-RJM\\_ZOGUil/edit?usp=sharing](https://docs.google.com/spreadsheets/d/1jyr5-ziRLWbn_RI5fliADVzIfWlrc72a-RJM_ZOGUil/edit?usp=sharing)

## 12 | Site problems and Solutions

### 12.1 Hay Al Iskan Basic Mixed School-Jerash

A (10 m) regulatory street is planned to be executed by deduction 5 m along the south eastern side of the construction land, the other 5 m will be deducted from the neighboring land and this is according to the land deeds drawing enclosed with the design drawings. The Employer is addressed in this regard- we are awaiting their decision/ **Pending**.

A reminder is sent to MPWH concerning this issue.

### 12.2 Thahr Al Sarow Basic School for Boys-Jerash

The Contractor sent a letter informing that the plot boundary issue is not solved yet despite his follow- up with Jerash Municipality, MPWH is addressed in this regard/ **Pending**.

Reminder is sent to MPWH concerning this issue.

MPWH sent a letter to MoE asking to provide them with the last update of this issue.

### 12.3 Jumana Bint Abi Taleb Basic Mixed School- Amman

The Contractor executed an adjacent wall to the existing one since the existing wall is considered as a shoring system for the existing planter and trees of the neighbor, based on MPWH representatives' verbal instructions during the conducted visit on 10/12/2021, a letter is sent to MPWH including the additional concrete quantities resulting of this work and due to technical issues.

## 13 | Meetings and Site Visits

### 13.1 Coordination & Progress Meetings

Coordination & Progress Meetings				
No.	Date	Location	Parties	Agenda
1	29/06/2021	Jumana Bint Abi Taleb Basic Mixed School- Amman	<ul style="list-style-type: none"> <li>● MPWH</li> <li>● USAID</li> <li>● Trigon</li> <li>● Wahib Medanat</li> <li>● Derar Saraireh Eng &amp; Contr.</li> </ul>	<p><b>Monthly Progress Meeting:</b></p> <p><b>1- For Each Package:</b></p> <ul style="list-style-type: none"> <li>● Site staff training</li> <li>● Health &amp; Safety</li> <li>● Package Time &amp; Duration</li> <li>● Contract &amp; VOs</li> <li>● Cash Flow</li> <li>● Submitted Materials</li> <li>● Package, Monthly &amp; Cumulative Progress</li> </ul> <p><b>2- For Each Site:</b></p> <ul style="list-style-type: none"> <li>● Site Elements</li> <li>● Time &amp; Duration</li> <li>● Monthly &amp; Cumulative Progress</li> <li>● Site Obstacles</li> <li>● Quality Control Non Conformance</li> <li>● Pictures showing work progress</li> </ul>

## June Monthly Progress Meeting, June 29, 2021– Jumana Bint Abi Taleb Basic Mixed School- Amman

(Refer to 13.1 Coordination & Progress Meetings Table)

### Minutes of Meeting

#### Subject: Monthly Progress Meeting – SKEP III

**Location:** Jumana Bint Abi Taleb Basic Mixed School- Marka

**Date:** June 29, 2021

**Time:** 11:45 AM

**Present:**

1. Eng. Ola Nababteh, Engineer at IFP, MPWH
2. Eng. Abeer Abu Taha at IFP, MPWH
3. Eng. Tarek Rashdan, PMS, USAID
4. Eng. Osama Obaid, SCM, CMTO
5. Eng. Wahib Medanat, General Manager, Medanat
6. Eng. Suhair Amarin, Project Director, Medanat
7. Eng. Natheer Amarin, Project Manager, Medanat
8. Eng. Hassan Shaqboua, Quality Manager, Medanat
9. Eng. Sawsan Al-Yousef, Resident Engineer- PK2, Medanat
10. Mr. Muhanned Abuirsheid, Diputy General Manager, Dijlah
11. Eng. Amer Abdel Ghani, Project Manager, Dijlah



WAHIB  
MEDANAT  
consultant engineers  
مهندسون استشاريون

The Purpose of the Meeting is to follow up the Progress of the Project and to discuss different issues.

At the beginning, Suhair welcome the attendees and gave an Introduction about the purpose of the meeting.

### Package 2

#### 1. Health, Safety and Environment

Wahib presented photos showing that COVID- 19 protective measures are implemented in full in the construction sites in addition to the HSE contract requirements.

#### 2. Site Borders, Boundary Walls and Soil Investigation

2.1 Wahib stated that the modified site plan of Thahr Al Sarow School has been sent by MPWH, the said plan will be sent to the Contractor, accordingly.

2.2 Wahib said that the site obstacle issue of Hay Al Iskan is not solved yet. Tarek suggested minimizing the deduction along the construction site eastern south boundary to 2m instead of 5 m; this is to keep as much as we can the planned facilities for the students and the teaching staff.

Muhannad kindly asked to speed up the solving of the said issue in order to allow the Contractor to complete the boundary

1

## Minutes of Meeting

### Subject: Monthly Progress Meeting – SKEP III



WAHIB  
MEDANAT  
consultant engineers  
مهندسون استشاريون

walls.

- 2.3 Tarek asked Ola to send the letter, which includes the additional quantities, resulted from execution the new boundary wall at Jumana School adjacent to the existing one, to USAID. Ola stated that no instruction was given in this regard by the MPWH representatives, Wahib and Sawsan confirmed that the executed work was the best solution to get the issue solve safely. Suhair added the cost of the shoring system would be much higher than the said quantities if it was performed.

### 3. Progress Review

- 3.1 Wahib shows a diagram for time report, which includes Commencement, start and finish dates for the project.
- 3.2 Graphs showing the elapsed time for each site, cash flow for the package, advanced payment and interim payment nos.1,2,and 3.
- 3.3 CPM, a diagram showing the comparison between the accumulative actual progress (30.20 %) for the whole package which relatively the same of the planned percentage (32.47%).
- Jumana School: actual monthly progress is 2.80 %; the planned percentage is 7.00 %. Actual accumulative progress is 26.00 %, the planned percentage 28.90 %.
  - Hay Al Iskan School: actual monthly progress is 4.00 %; the planned percentage is 8.10 %. Actual accumulative progress is 33.60 %, the planned percentage 40.10 %.
  - Thahr Al Sarow School: actual monthly progress is 5.30 %; the planned percentage is 0.80 %. Actual accumulative progress is 34.50 %, the planned percentage 35.90 %.
- 3.4 Variation Orders: Sawsan stated that there is no change on the status on the last presented log.

### 4. Quality Control

Hasan stated the executed plastering works at Jumana School was re executed due to the appearance of many hairline cracks, which shall not happen, Sawsan and Wahib stated that the reason for such matter is due to not using a plasticizer. Sawsan confirmed that the Contractor submitted plasticizer and it is approved.

### 5. Submitted Materials

Wahib stated the total percentage of the submitted materials is



## Minutes of Meeting

### Subject: Monthly Progress Meeting – SKEP III

74 % and as follows, for architectural 63 % (approved 33 %), mechanical 67 % (31 %) and electrical 100 % (85 %) and structural 100% (approved 100%). He also gave a brief of the submittals in numbers.



WAHIB  
MEDANAT  
consultant engineers  
مهندسون استشاريون



June Monthly Progress meeting- Jumana Bint Abi Taleb Basic Mixed School- Amman



Eng. Wahib made a presentation on:

- Site staff training
- Health & Safety
- Package Time & Duration
- Contract & VOs
- Cash Flow
- Submitted Materials
- (Scheduled and actual) progress percentages

## 13.2 Site Visits

Site Visits				
No.	Date	Location	Parties	Agenda
1	01/06/2021	Jumana Bint Abi Taleb Basic Mixed School- Amman	<ul style="list-style-type: none"> <li>• MPWH, Control &amp; Inspection Directorate, Eng. Jehad Swelim, and Eng Naser Al-Najjar from Internal Control Department</li> <li>• Wahib Medanat</li> <li>• Dijlah Est. Const. Contr.</li> </ul>	<ul style="list-style-type: none"> <li>• Checking staff credibility and commitment to working hours.</li> <li>• Inspecting work progress.</li> </ul>
2	21/06/2021	Thahr Al Sarow Basic School for Boys- Jerash	<ul style="list-style-type: none"> <li>• Trigon, Eng. Hanan Al-Karmi, Eng. Muhammad Sami</li> <li>• Wahib Medanat</li> <li>• Dijlah Est. Const. Contr.</li> </ul>	<ul style="list-style-type: none"> <li>• General Site Inspection (Quality) and reporting.</li> <li>• Site Meeting.</li> <li>• Checking site documentation.</li> <li>• Checking work progress and schedule.</li> </ul>
3	21/06/2021	Hay Al Iskan Basic Mixed School- Jerash	<ul style="list-style-type: none"> <li>• Trigon, Eng. Hanan Al-Karmi, Eng. Muhammad Sami</li> <li>• Wahib Medanat</li> <li>• Dijlah Est. Const. Contr.</li> </ul>	<ul style="list-style-type: none"> <li>• General Site Inspection (Quality) and reporting.</li> <li>• Site Meeting.</li> <li>• Checking site documentation.</li> <li>• Checking work progress and schedule.</li> </ul>
4	27/06/2021	Thahr Al Sarow Basic School for Boys- Jerash	<ul style="list-style-type: none"> <li>• MPWH/Jerash, Eng. Maysa'a Qouqaseh</li> <li>• Wahib Medanat</li> <li>• Dijlah Est. Const. Contr.</li> </ul>	<ul style="list-style-type: none"> <li>• Checking Work Progress.</li> <li>• Quality of Work.</li> </ul>

## Control & Inspection Directorate Visit, June 01, 2021– Jumana Bint Abi Taleb Basic Mixed School - Amman

(Refer to 13.2 Site Visits Table)

Project ID  
Sign on Site





Temperature check, sterilization and signing visitors' attendance sheet at the entrance of the site, complying with Covid-19 Protocol



The visit aimed to check staff credibility, commitment to working hours and inspecting work progress.



A tour around the site was conducted



Quality of the executed block works and concrete walls (straightness, concrete roughness, connection between ceiling and block works); was discussed.

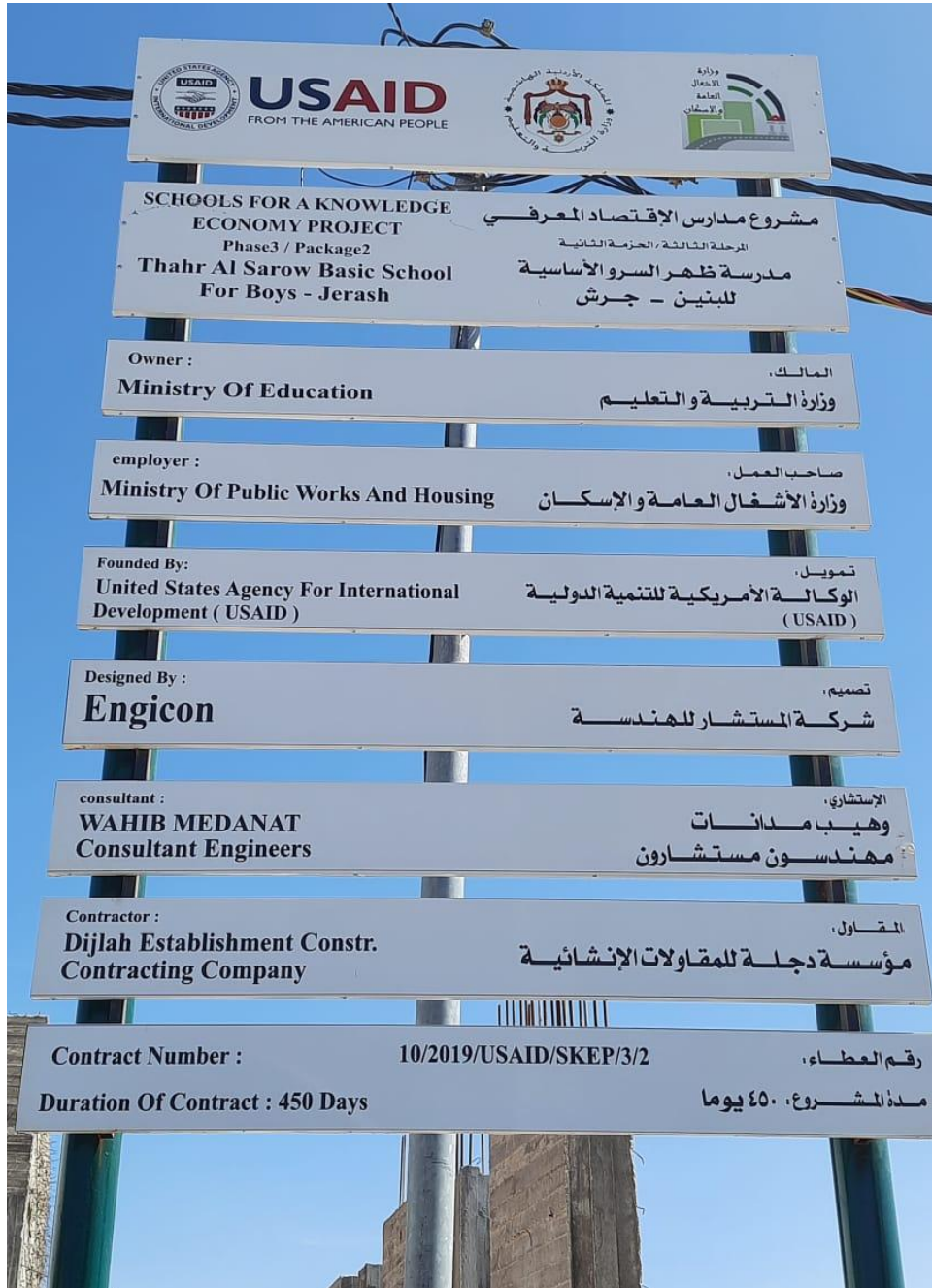


The Visitors comments are:

- 1- The percentage of the executed works is relatively low compared to the elapsed time;  
the Contractor shall revise his schedule.
- 2- Some defects in the block works shall be rectified, the work is done directly.

Trigon Visit, June 21, 2021– Thahr Al Sarow Basic School for Boys - Jerash

(Refer to Table 13.2 Site Visits table)



Project ID Sign  
on Site





Temperature check, sterilization and signing visitors' attendance sheet at the entrance of the site, complying with Covid-19 Protocol





Tour inside the site was conducted



Checking work quality



Observing work quality





Top of  
Second  
floor's slab



A meeting was held at the site after the visit, the purpose of the meeting was:

- Checking the availability of different documents and plans
- Following work progress and updated schedule

Trigon Visit, June 21, 2021– Hay Al Iskan Basic Mixed School - Jerash

(Refer to Table 13.2 Site Visits table)



Project ID Sign  
on Site



Temperature check, sterilization and signing visitors' attendance sheet at the entrance of the site, complying with Covid-19 Protocol





Top of  
Second  
floor's slab-  
Part 2





Top of  
Second  
floor's slab-  
Part 1





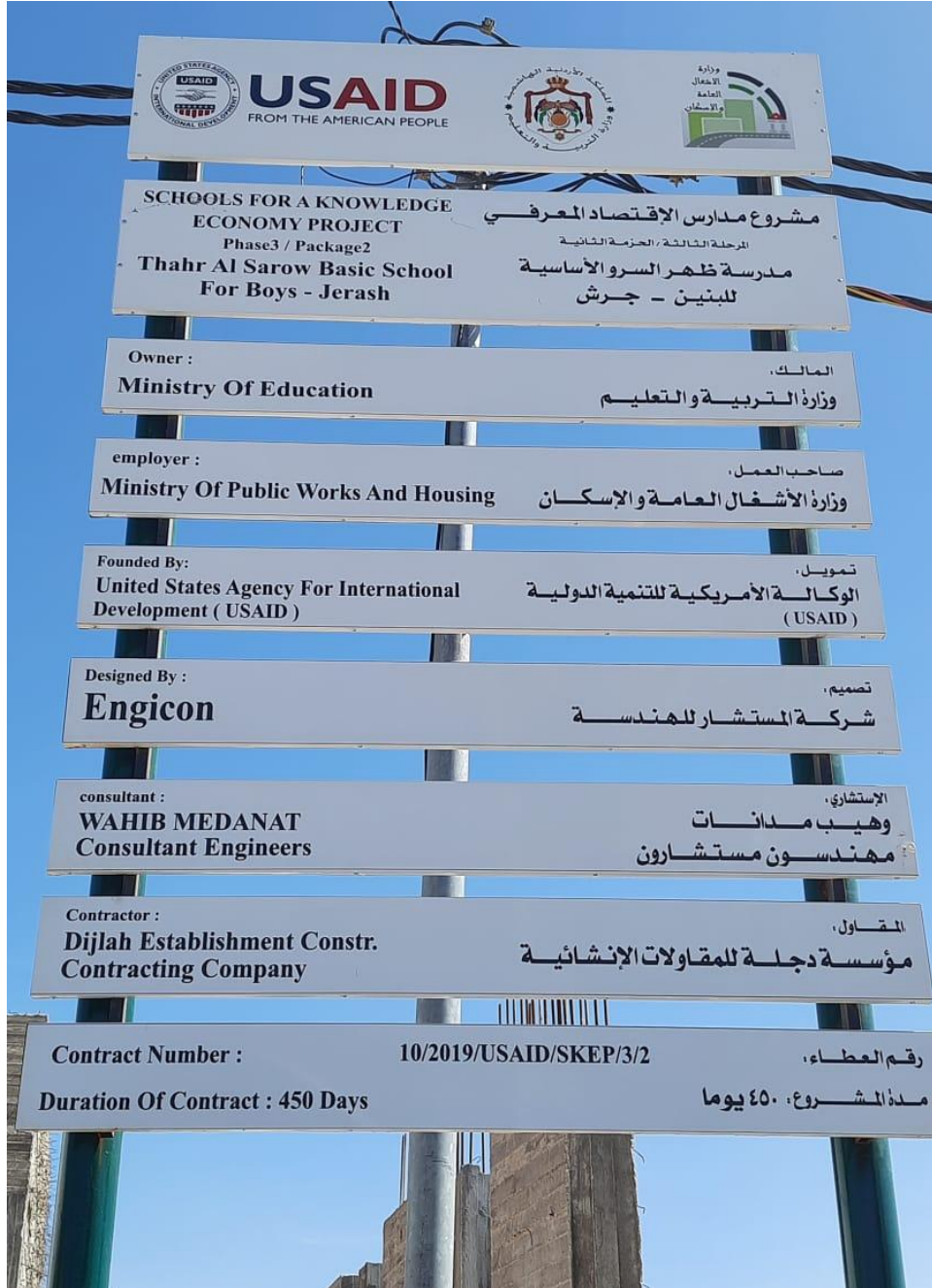


A meeting was held at the site after the visit, the purpose of the meeting was:

- Checking the availability of different documents and plans
- Following work progress and updated schedule

MPWH/Jerash, June 27, 2021– Thahr Al Sarow Basic School for Boys - Jerash

(Refer to Table 13.2 Site Visits table)



Project ID Sign  
on Site



Temperature check, sterilization and signing visitors' attendance sheet at the entrance of the site, complying with Covid-19 Protocol



Eng. Ala'a/Medanat Site Engineer gave a brief about project components



A tour was conducted inside the project in the presence of Eng. Natheer/ Medanat project manager



Observing work progress

### 13.3 Regular Monthly Site Visits (Home Office Support)

Regular Monthly Site Visits (Home Office Support)				
1	03/06/2021	Hai Al Iskan Basic Mixed School- Jerash	Engineer Rep.	<ul style="list-style-type: none"> <li>• Engine- Blockwork: The quality is acceptable in general. Narrow spaces between block wall and ceiling were filled with saw cut blocker Rep.</li> <li>• Discussion with the Contractor as follows:                             <ul style="list-style-type: none"> <li>- Aluminum work: issue of the accessories was discussed in accordance to the contract requirements to be stainless steel accessories. The Contractor stated that only one of the three sources in the Vendor List can supply those accessories. The Contractor presented a catalogue where the pin of the hinge only is stainless steel not all the accessory. The contractor was requested to comply with the specifications which indicate that the whole accessories shall be stainless steel.</li> <li>- Mechanical submittals were discussed.</li> </ul> </li> </ul>

2	03/06/2021	Thahr Al Sarow Basic School for Boys- Jerash	Engineer Rep.	<ul style="list-style-type: none"> <li>● Blockwork: The quality is acceptable in general. Narrow spaces must not be filled with mortar. Saw cut blocks must be used.</li> <li>● Window jambs: The end of blockwork with all details such as polystyrene should be ended at the openings with concrete edge, not thin layer of mortar as observed.</li> <li>● Quality check for the stone mock-up wall (not pointed):             <ul style="list-style-type: none"> <li>- Window sill shall be two pieces not three.</li> <li>- Broken edges were noticed. The stones must not have broken edges.</li> <li>- The window stone frame must look as one piece. The pieces should be cut and built with more care for joints.</li> <li>- No objection to the place of installing the electrical boxes on a condition to be installed in a way to avoid cut in the pointing of spaces between built stone layers.</li> <li>- Number of broken stones were observed. Broken stones are not accepted and must be replaced and this to be avoided in executing the stone elevations.</li> </ul> </li> <li>● Samples for stone pointing must be prepared in a later stage to be checked by the Engineer on the request of the Contractor.</li> </ul>
---	------------	--	---------------	---

3	29/06/2021	Jumana Bint Abi Taleb Basic Mixed School- Amman	Engineer Rep.	<ul style="list-style-type: none"> <li>● A Request that for the purposes of first fix installation, the block should be saw cut. Medanat SE confirmed that the block is already saw cut, but the seen view was due to plastering work-2<sup>nd</sup> layer over the electrical first fix pipes.</li> <li>● Medanat SE confirmed that he requested the Contractor several times to provide a special mortar mixing container with reasonable size to keep the water content in the mix and to avoid accumulation of residues of mixes. Currently three containers are available and under use in the site.</li> <li>● The relationship between the electric shutter door and the blockwork walls was discussed including the way that the door shall be installed.</li> <li>● The visitors reminded the Contractor's staff to spray water at the entrance of the site for the purpose of dust control. The Contractor was immediately directed and he did as requested.</li> </ul>
---	------------	---	------------------	---

**Home Office Support, June 03, 2021– Hay Al Iskan Basic Mixed school- Jerash**  
 (Refer to 13.3 Site Visits Table)



**SKEP III Home Office Support Site Visit Report**

Consultant	Wahib Medanat Consultant Engineer	Rep No.	21-03062021
Contractor	Dijlah Establishment Constr. Contracting	Tender No.	(11/2019/USAID/SKEP/3/S) Schools for a Knowledge Economy Project (SKEP) - Phase (3) Package (1, 2)
Site Name	Hay Al Iskan Basic Mixed School- Jerash	Day/ Date	Sat. 03/06/2021
Duration of Project	450 Calendar Days	Total Project Budget	8,314,983.735 JD

No.	Visitors		Remarks
1	Suhair Amarin	-Project Dir./Head of Architectural Department	
2	Omar Elayan	-Senior Civil Engineer	
3	Akram Khammes	- Head of Electrical Department	
4	Marwan Sonna'a	-Head of Mechanical Department	
5	Hasan Shaqboua	-Quality Control Manager	
Visit Notes			
No.	Description		
1	- Blockwork: The quality is acceptable in general. Narrow spaces between block wall and ceiling were filled with saw cut blocks.		
2	- Discussion with the Contractor as follows: <ul style="list-style-type: none"> <li>Aluminum work: Issue of the accessories was discussed in accordance to the contract requirements to be stainless steel accessories. The Contractor stated that only one of the three sources in the Vendor List can supply those accessories. The Contractor presented a catalogue where the pin of the hinge only is stainless steel not all the accessory. The contractor was requested to comply with the specifications which indicates that the whole accessories shall be stainless steel.</li> <li>Mechanical submittals were discussed.</li> </ul>		





SKEP III Home Office Support Site Visit Report

WAHIB  
MEDANAT  
consultant engineers



Project ID Sign on Site



SKEP III Home Office Support Site Visit Report

WAHIB  
MEDANAT  
consultant engineers



Temperature check, sterilization and signing visitors' attendance sheet at the entrance of the site, complying with Covid-19 Protocol





WAHIB  
MEDANAT  
consultant engineers



Shot shows perfect finish for window jamb

4



SKEP III Home Office Support Site Visit Report

WAHIB  
MEDANAT  
consultants



The narrow spaces between block wall and the ceiling is filled with saw cut block



First stage of plastering work



WAHIB  
MEDANAT  
consultant engineers



←  
Steel  
Reinforcement  
of part B of the  
First floor slab  
and curing  
works for the  
casted part A





WAHIB  
MEDANAT  
consultant engineers



Aluminum work issue and Mechanical submittals were discussed with the Contractor



Tour inside the site was conducted

**Home Office Support, June 03, 2021– Thahr Al Sarow Basic School for Boys- Jerash**  
 (Refer to 13.3 Site Visits Table)



**SKEP III Home Office Support Site Visit Report**

**WAHIB  
MEDANAT**  
consultant engineers

Consultant	Wahib Medanat Consultant Engineer	Rep No.	22-03062021
Contractor	Dijlah Establishment Constr. Contracting	Tender No.	(11/2019/USAID/SKEP/3/S) Schools for a Knowledge Economy Project (SKEP) - Phase (3) Package (1, 2)
Site Name	Thahr Al Sarow Basic School for Boys- Jerash	Day/ Date	Sat. 03/06/2021
Duration of Project	450 Calendar Days	Total Project Budget	8,314,983.735 JD

No.	Visitors		Remarks
1	Suhair Amarin	- Project Dir./Head of Architectural Department	
2	Omar Elayan	-Senior Civil Engineer	
3	Akram Khammes	- Head of Electrical Department	
4	Marwan Sonna'a	-Head of Mechanical Department	
5	Hasan Shaqboua	-Quality Control Manager	
Visit Notes			
No.	Description		
1	1- Blockwork: The quality is acceptable in general. Narrow spaces must not be filled with mortar. Saw cut blocks must be used.		
2	2- Window jambs: The end of blockwork with all details such as polystyrene should be ended at the openings with concrete edge not thin layer of mortar as observed.		



No.	Description
3	<p>- Quality check for the stone mock-up wall (not pointed).</p> <ul style="list-style-type: none"> <li>• Window sill shall be two pieces not three.</li> <li>• Broken edges were noticed. The stones must not have broken edges.</li> <li>• The window stone frame must look as one piece. The pieces should be cut and built with more care for joints.</li> <li>• No objection to the place of installing the electrical boxes on a condition to be installed in a way to avoid cut in the pointing of spaces between built stone layers.</li> <li>• Number of broken stones were observed. Broken stones are not accepted and must be replaced and this to be avoided in executing the stone elevations.</li> </ul> <p>Sample for stone pointing must be prepared in a later stage to be checked by the Engineer on the request of the Contractor.</p>







SKEP III Home Office Support Site Visit Report

WAHIB  
MEDANAT  
consultant engineers



Temperature check, sterilization and signing visitors' attendance sheet at the entrance of the site, complying with Covid-19 Protocol

4

\\SERVER\Data\PROJECTS FILES\360\Home office support Site Visits\June Visits\Thahr Al Sarow-03-06-2021.docx  
Form # QP SUP 01-18, Rev.1



Quality check for the stone mock-up wall (not pointed). Notes were given to the contractor



The window stone frame must look as one piece. The pieces should be cut and built with more care for joints



SKEP III Home Office Support Site Visit Report

WAHIB  
MEDANAT  
consultant engineers



Number of broken stones were observed.



The Contractor was instructed to rectify the status of this end for window jamb by casting concrete section instead of block and mortar



SKEP III Home Office Support Site Visit Report

WAHIB  
MEDANAT  
consultant engineers



Narrow spaces must not be filled with mortar. Saw cut blocks must be used  
Narrow spaces must not be filled with mortar. Saw cut blocks must be used



First stage of plastering work



WAHIB  
MEDANAT  
consultant engineers



Tour inside the  
site was  
conducted



**Home Office Support, June 29, 2021– Jumana Bint Abi Taleb Basic Mixed School- Amman**  
 (Refer to 13.3 Site Visits Table)



**SKEP III Home Office Support Site Visit Report**

**WAHIB MEDANAT**  
 consultant engineers

Consultant	Wahib Medanat Consultant Engineer	Rep No.	23-29062021
Contractor	Dijlah Establishment Constr. Contracting	Tender No.	(11/2019/USAID/SKEP/3/S) Schools for a Knowledge Economy Project (SKEP) - Phase (3) Package (1, 2)
Site Name	Jumana Bint Abit Taleb Basic Mixed School - Jerash	Day/ Date	Tus. 29/06/2021
Duration of Project	450 Calendar Days	Total Project Budget	8,314,983.735 JD

No.	Visitors	Remarks
1	Suhair Amarin	- Project Dir./Head of Architectural Department
2	Wahib Medanat	-Senior Civil Engineer
3	Akram Khammes	- Head of Electrical Department
4	Marwan Sonna'a	-Head of Mechanical Department
5	Hasan Shaqboua	-Quality Control Manager

Visit Notes

No.	Description
1	During the site visit  A Request that for the purposes of first fix installation, the block should be saw cut. Medanat SE confirmed that the block is already saw cut, but the seen view was due to plastering work-2 <sup>nd</sup> layer over the electrical first fix pipes.
2	Medanat SE confirmed that he requested the Contractor several times to provide a special mortar mixing container with reasonable size to keep the water content in the mix and to avoid accumulation of residues of mixes. Currently three containers are available and under use in the site.



No.	Description
3	The relationship between the electric shutter door and the blockwork walls was discussed including the way that the door shall be installed.
4	The visitors reminded the Contractor's staff to spray water at the entrance of the site for the purpose of dust control. The Contractor was immediately directed and he did as requested.



SKEP III Home Office Support Site Visit Report

WAHIB  
MEDANAT  
consultant engineers



Project  
ID Sign  
on Site





SKEP III Home Office Support Site Visit Report

WAHIB  
MEDANAT  
consultant engineers



Temperature check, sterilization and signing visitors' attendance sheet at the entrance of the site, complying with Covid-19 Protocol





SKEP III Home Office Support Site Visit Report

WAHIB  
MEDANAT  
consultant engineers



Tour inside the  
site was  
conducted





Formwork for external walls behind stone



Eng. Hasan/Quality Control Manager explaining how the second layer of plastering shall be executed



Observing work quality



Eng. Yousef/Medanat Site Engineer gave a brief about the building area, number of floors and facilities



WAHIB  
MEDANAT  
consultant engineers



Formwork for  
door jambs and  
lintels



Formwork for  
lintels of internal  
windows



Medanat SE confirmed that he requested the Contractor several times to provide special mortar mixing container with reasonable size to keep the water content in the mix and to avoid accumulation of residues of mixes. Currently three containers are available and under use in the site



WAHIB  
MEDANAT  
consultant engineers



A tour  
around the  
project

## 14 | Manpower Logs

**14.1 Hay Al Iskan Basic Mixed School – Jerash Progress**

**14.2 Thahr Al Sarow Basic School for Boys-Jerash**

**14.3 Jumana Bint Abi Taleb Basic Mixed School- Amman**

- ❑ Manpower Link
- ❑ <https://docs.google.com/spreadsheets/d/1jnppSDKsfsJ0r8AytAJsF7UOoYzCgY6wZYkMbMaiyYo/edit?usp=sharing>

## 15 | Daily Plant and Equipment

**15.1 Hay Al Iskan Basic Mixed School – Jerash Progress**

**15.2 Thahr Al-Sarow Basic School for Boys- Jerash**

**15.3 Jumana Bint Abi-Taleb Basic Mixed School- Amman**

- ❑ Daily Plant and Equipment Link
- ❑ <https://docs.google.com/spreadsheets/d/1S7cDdZKnxHVXU62qGiYvebuptbM7Fw4Yy033qgA4fmo/edit?usp=sharing>



## 16 | Lab-test Results Tracking Log

### 16.1 Hay Al Iskan Basic Mixed School – Jerash

### 16.2 Thahr Al-Sarow Basic School for Boys- Jerash

### 16.3 Jumana Bint Abi-Taleb Basic Mixed School- Amman

☐ Link

☐ [https://docs.google.com/spreadsheets/d/1oC7OgRw2tKcsd8UrFo\\_o\\_xzM0BX8Bl\\_ZPrJo6be1RcM/edit?usp=sharing](https://docs.google.com/spreadsheets/d/1oC7OgRw2tKcsd8UrFo_o_xzM0BX8Bl_ZPrJo6be1RcM/edit?usp=sharing)

## 17 | Obstacles Log (Site Obstacles)

- <https://docs.google.com/spreadsheets/d/1Sl0XacJ0y4yF6RVDOzlw8v3pdVatvO5nU-yKJcnQxQ/edit?usp=sharing>

## 17.1 Hay Al Iskan Basic Mixed School - Jerash

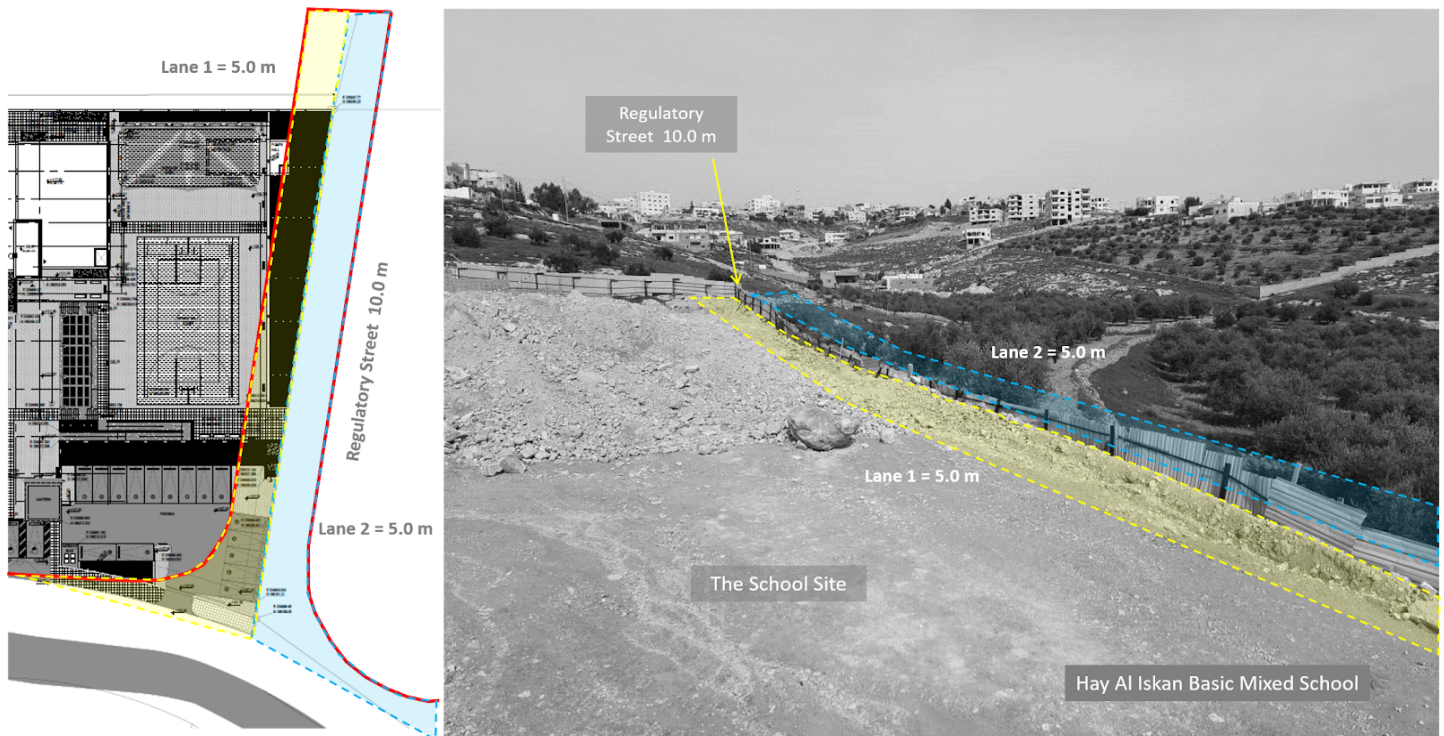


Figure 1. A regulatory (10.0 m) street is planned to be executed by deduction 5.0 m along the south western side, the other 5.0 m will be deducted from the neighbor's land.

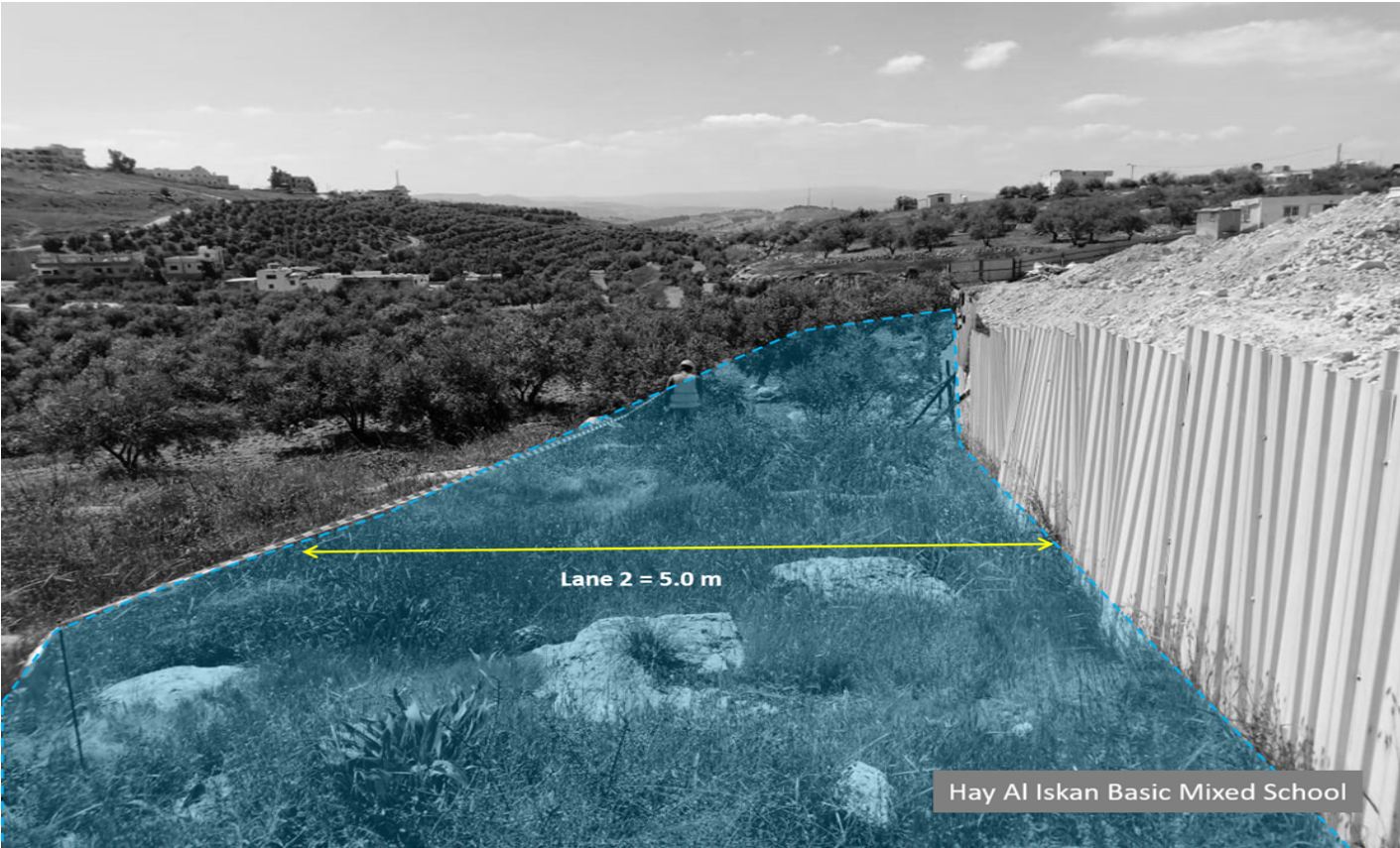


Figure 2. The 5.0 m encroachment on the neighbor's land

## 17.2 Thahr Al Sarow Basic School for Boys – Jerash SOLVED



Figure 3. Existing street encroaching on the site boundary

# SOLVED

## 18 | Selected Photos

### 18.1 Hay Al Iskan Basic Mixed School- Jerash



Columns formwork for the second floor)

01/06/2021



Starting the stone work (first row)

14/06/2021



Casting the  
infill beam for  
the ground  
slab

20-06-2021



Progress in  
stone works  
and finishing  
the final slab-  
part 2

30/06/2021

## 18.2 Thahr Al Sarow Basic School for Boys- Jerash



Formwork and steel reinforcement for columns, walls and stair no.2 walls at 3rd. Floor- Part 1

01/06/2021



Stone cladding at ground floor, formwork and steel reinforcement for 3rd floor- part 1

09/06/2021





Formwork and steel reinforcement for 3rd floor slab- part 2

20/06/2021



Shows the progress of stone work and finishing the final slab

30/06/2021

### 18.3 Jumana Bint Abi Taleb Basic Mixed School - Amman



Formwork and steel reinforcement for floor slab- part 1

01/06/2021



Ground floor blockwork- part 1

06/06/2021



Starting  
plastering  
activity in  
ground floor-  
part 1

15-06-2021



Formwork for  
the walls  
behind the  
stone of the  
second floor  
part 1, and  
preparing  
second floor  
slab part 2

30/06/2021

---

## 19 | Location Links

19.1 [Hay Al Iskan Basic Mixed School – Jerash](#)

19.2 [Thahr Al-Sarow Basic School for Boys - Jerash](#)

19.3 [Jumana Bint Abi-Taleb Basic Mixed School - Amman](#)

## 20 | Website Reports Links

20.1 [Daily Reports](#)

20.2 [Weekly Reports](#)

20.3 [Monthly Reports](#)

20.4 [CMTO Inspection Reports](#)

20.5 [Quality Reports](#)

## 21 | Training

### 21.1 Training:

SKEPIII Site staff training sessions

We conduct one effective training session per week for both our staff and the contractor staff including fresh graduates. The training is conducted by our senior engineers from various disciplines and backgrounds. Our future plan for staff training is to host external trainers from the Ministry of Local Administration to talk about Municipalities regulations.



## 21.2 Training Sessions:

### Training Sessions June 2021

#### 1. Training Session

1.1. Tracking Tasks in CPM 19.06.2021



#### 2. Training Session

2.1. Administrative training 13.06.2021



#### 3. Training Session

3.1. Introduction to Structural Design 05.06.2021



For More Details:

- Training Link:
- <https://www.medanat.site/training>