

# Quality Control Report

**Consultant** **Wahib Medanat** Consultant Engineers  
**Site Name** **Jumana Bint Abi Taleb Basic Mixed - Marka**  
**Package** **Package 2**  
**Contractor** **Dijlah Est. Construction Co.**  
**Tender No.** **10/2019/USAID/SKEP/3/2**

**Rep No.** **QC-23 08**  
**Date** **7 / 09 / 2021**

Description of Non Conformance	Corrective Action	Required by / When
1. Painted stone at one facade to hide the defects. 2. Mechanical cabinets edge not matching with plastering face. 3. One mechanical cabinet close to the door jamb. 4. Two water pipes at one wall very close to each other, (Cold Water and Hot Water). 5. Voids in accoustical plastering for one ceiling.	1. Sandblasting to remove paint and replace the defected parts. 2. Should be rectified to match with plastering. 3. Should be removed away 20cm to allow for tiling, opening & closing. 4. One pipe should be relocated to allow for the insulation of hot water pipe. 5. Should be repaired using special materials.	The Contractor/Immediately
<b>Report Prepared by</b>	Hassan Shaqbua, Supervision Quality Control Manager	
<b>Contractor's Response</b>		
The Contractor rectified note 1 and note 4 only.		
<b>Notes</b>		

Consultant Site Engineer

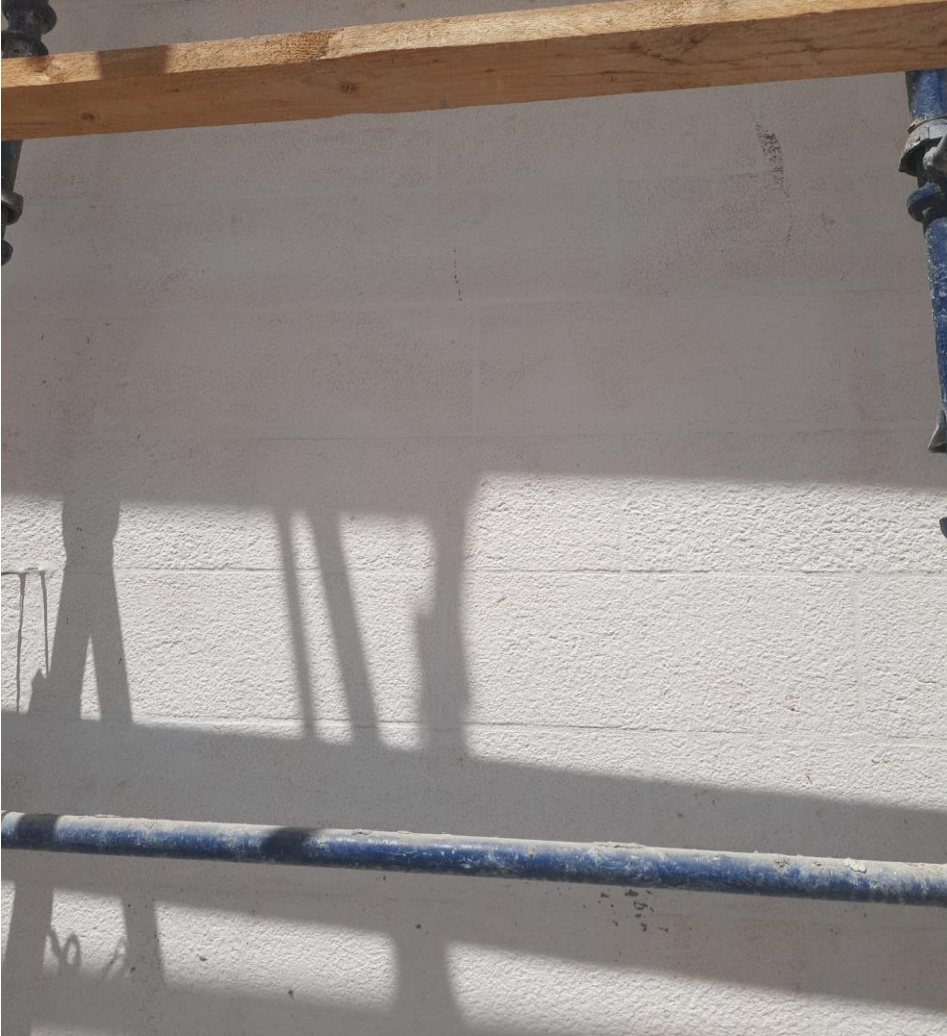
Contractor Site Engineer

Signature

Signature

# Quality Control Report

## Before Photos:



Painted stone façade to hide the defects

Consultant Site Engineer

Signature

Contractor Site Engineer

Signature

# Quality Control Report



**Mechanical cabinet not matching with plastering face**



**Mechanical cabinet close to the door frame.**

Consultant Site Engineer

Signature

Contractor Site Engineer

Signature



# Quality Control Report



**Hot and cold water pipes close together**

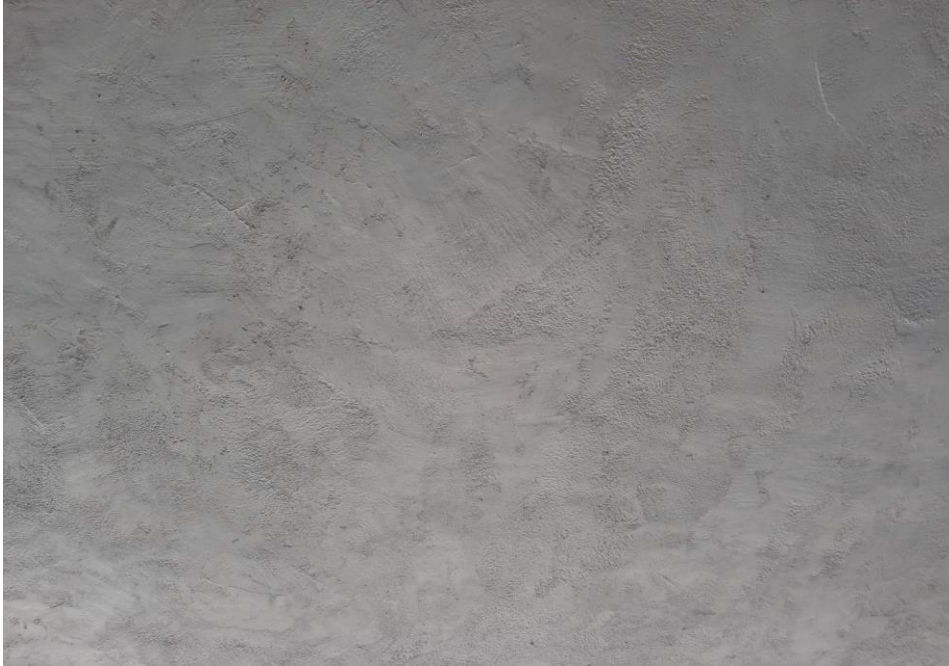
Consultant Site Engineer

Signature

Contractor Site Engineer

Signature

# Quality Control Report



**Voids in the acoustic ceiling**

Consultant Site Engineer

Signature

Contractor Site Engineer

Signature

# Quality Control Report

## Photos After:



Stone façade after removing the paint and rectifying the defects

Consultant Site Engineer

Contractor Site Engineer

Signature

Signature



# Quality Control Report



**Creating a space between hot and cold water pipes and insulation to the hot water pipe**

Consultant Site Engineer

Contractor Site Engineer

Signature

Signature