



SKEP III Home Office Support Site Visit Report

**WAHIB
MEDANAT**
consultant engineers

Consultant	Wahib Medanat Consultant Engineer	Rep No.	22-09082021
Contractor	Dijlah Establishment Constr. Contracting	Tender No.	(11/2019/USAID/SKEP/3/S) Schools for a Knowledge Economy Project (SKEP) - Phase (3) Package (1, 2)
Site Name	Thahr Al Sarow Basic School for Boys- Jerash	Day/ Date	Sat. 09/08/2021
Duration of Project	450 Calendar Days	Total Project Budget	8,314,983.735 JD

No.	Visitors		Remarks
1	Suhair Amarin	- Project Dir./Head of Architectural Department	
2	Omar Elayan	-Senior Civil Engineer	
3	Akram Khammes	- Head of Electrical Department	
4	Marwan Sonna'a	-Head of Mechanical Department	
5	Hasan Shaqboua	-Quality Control Manager	

Visit Notes

No.	Description
1	The Contractor started work in the site in accordance to the modified site plans received from MPWH. The said plans consist of the following: <ul style="list-style-type: none"> - Relocating the temporary fence adjacent to the encroaching street. - Relocating the Consultant's and Contractor's site offices. Also the Contractor started with the excavation work for external underground water tank. The electrical company was called to remove the electrical poles according to the modified plans and JEPCO. Is awaited.
2	The Consultant reminded the Contractor that the window sills should have a slight slope to outside while should be straight between the jambs of the window.



No.	Description
4	The Consultant met with the Contractor in the site offices and advised him to submit workshop drawings for heating pipes under slab for Engineer review as MPWH approval is still under process. So the Engineer advised the Contractor to finish shop drawings as soon as possible to start work immediately after MPWH approval is received to save time.
5	Arch. Suhair explained to the Contractor the relation between the porcelain cladding, granite coping, window sill and the door jamb.
6	The Contractor is working in the electrical first fix at the infill strip area for the highest floor. Casting of the infill strip shall be allowed after the end of the (60 days) specified period in the contract, (the elapsed time after casting the two parts of the slab).
7	The Consultant observed that, at the door, window jambs, the end of block wall is passing the end of stone limit. The Contractor was requested to match the block wall with the stone end.
8	The Consultant stated that upon the feedback from the Designer, there will not be a future extension for floors, and accordingly no column necks are needed at roof.
9	The Consultant observed that the Contractor abides by the contract's requirement regarding the saw cut in the block wall for the MEP first fix.
10	The Consultant observed that the Contractor discarded the rejected plastering beads of (3cm) and already delivered the approved beads of (5cm). The Contractor removed the rejected beads outside the site and signed with the Consultant a site memorandum indicating the removal of those beads.
11	The stone work in the school is acceptable in general.
12	Plastering: Guidance points not to be at the opening edges to avoid gap between the concrete section and the block wall. The Contractor instructed to remove those plastering guidance lines.
13	Plastering beads are used for windows' edges



Project ID
Sign on Site





Temperature check, sterilization and signing visitors' attendance sheet at the entrance of the site, complying with Covid-19 Protocol



Complying with covid-19 protocol inside the building



General view of the completed third floor casting (the last slab)



WAHIB MEDANAT consultant engineers



-The Contractor started with the excavation work for external underground water tank



-Relocating the temporary fence adjacent to the encroaching street

in accordance to the modified site plans received from MPWH

Electrical company was called to remove electrical poles the according to the modified plans and JEPSCO. Is awaited



WAHIB
MEDANAT
consultant engineers



Relocating
the
Consultant's
and
Contractor's
site offices





The Consultant reminded the Contractor that the window sills should have a slight slope to outside while should be straight between the jambs of the window.



Remarks have been observed on the built stone on the facades and a discussion was made








Eng. Natheer remarked that plastering guidance points not to be at the opening edges to avoid gap between the concrete section and the block wall. The Contractor instructed to remove those plastering guidance lines.



The Consultant observed that the Contractor discarded the rejected plastering beads of (3cm) and already delivered the approved beads of (5cm). The Contractor removed the rejected beads outside the site and signed with the Consultant a site memorandum indicating the removal of those beads.

SKEP-3 Memo Form

Contractor	Dijlah Establishment Constr. Contracting	Ref. NO.	24
Consultant	Wahib Medanat Consultant Engineers	Tender No.	10/2019/US AID/ SKEP/3/2
Site	THAHR AL-SAROW BASIC SCHOOL FOR BOYS	DATE	09-08-2021
Subject	Removing Failed RSS reports for plaster Accessories (corners and mesh)		

To Eng. Alaa Elimat
From Eng. Abd Elmalek Alhusban

Dear Engineer ,

Kindly note that due to (RSS) report for plaster Accessories (corners and mesh) dated 17-06-2021 , and your site memo dated (28-06-2021) to remove this material , all this failed quantity removed from our site as attached photos .

this for your information and if any further comments .

Regards ,

• Attachments 1 photos
 • CC Eng. Amer Yousef

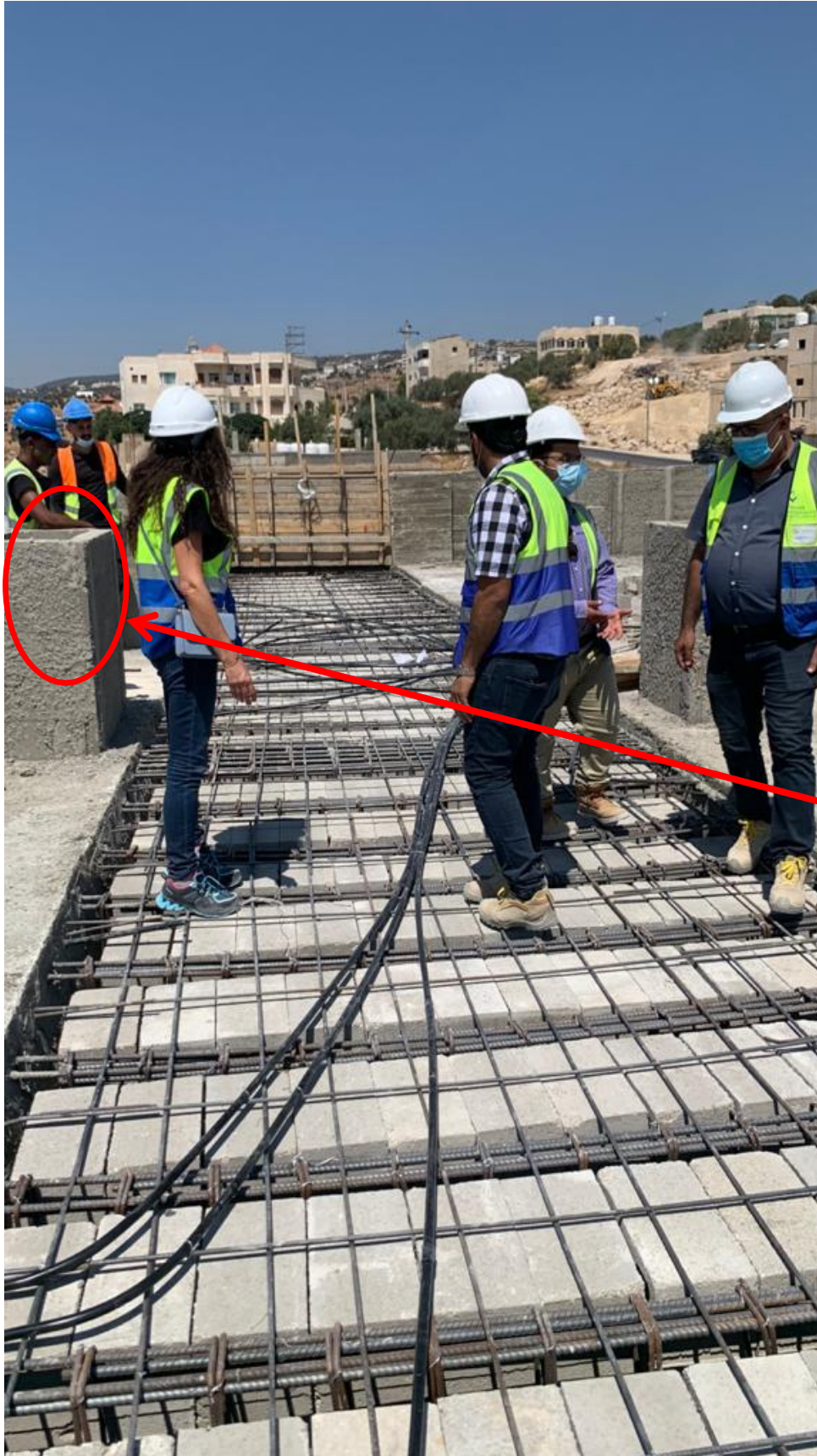
Consultant Representative
 Eng. Alaa Elimat *[Signature]* 9.8.2021
 Contractor Representative
 Eng. Abd Elmalek Alhusban *[Signature]* 2021/8/9



The Consultant observed that the Contractor abides by the contract's requirement regarding the saw cut in the block wall for the MEP first fix



Installation of Concealed Cistern



The Contractor is working in the electrical first fix at the infill strip area for the highest floor. Casting of the infill strip shall be allowed after the end of the (60 days) specified period in the contract, (the elapsed time after casting the two parts of the slab)

The Consultant stated that upon the feedback from the Designer, there will not be a future extension for floors, and accordingly no column necks are needed at roof



The Consultant advised the Contractor to submit workshop drawings for heating pipes under slab for Engineer review as MPWH approval is still under process and discussing the false ceiling design ideas for corridors





Plastering beads are used for windows' edges



Discussing connection between backing concrete behind stone and window jamb with the internal finishing



The Consultant observed that, at the door, window jambs, the end of block wall is passing the end of stone limit.

The Contractor was requested to match the block wall with the stone end



A tour inside the site was conducted



After the site visit a meeting was held in the site offices in the presence of Engineer's representatives and Contractor's representatives to discuss work progress, quality and safety issues