

# School for Knowledge Economy Project (SKEP)

## Phase III – Package 2


### Monthly Progress Report

No. 24

September, 2022



**WAHIB  
MEDANAT**  
consultant engineers

 + 962 6 5821206  
+ 962 6 5817847  
+ 962 79 7650576

 + 962 6 5862357

 mail@medanat.com  
info@medanat.com

 www.medanat.com

**TÜV**  
AUSTRIA  
HELLAS

No.: 20001210004621  
Management System as per  
EN ISO 9001 : 2015

**TÜV**  
AUSTRIA  
HELLAS

No.: 20152200003939  
Management System as per  
ISO 45001 : 2018

## | Table of Contents

	Page
<b>  Table of Contents</b>	<b>2</b>
<b>1   Project Particulars</b>	<b>5</b>
1.1 Contract Main Information	5
1.2 Executive Summary	7
A- Hay Al-Iskan Basic School Mixed School – Jerash	7
B- Thahr Al-Sarow Basic School for Boys – Jerash	8
C- Jumana Bint Abi Taleb Basic Mixed School – Amman	9
<b>2   Consultant Organisation Project Staff</b>	<b>10</b>
<b>3   Summary of Activities</b>	<b>13</b>
3.1 Hay Al-Iskan Basic School Mixed School – Jerash	13
3.2 Thahr Al-Sarow Basic School for Boys- Jerash	13
3.3 Jumana Bint Abi-Taleb Basic Mixed School- Amman	13
3.4 Mobilization Tracking Log	13
3.5 Log of Activities	13
<b>4   Project Time and Duration</b>	<b>14</b>
<b>5   Project Contract &amp; V.O's</b>	<b>16</b>
<b>6   Cash Flow</b>	<b>17</b>
<b>7   Progress</b>	<b>19</b>
7.1 Package 2 Average Progress	19
7.2 Hay Al Iskan Basic Mixed School – Jerash	25
7.3 Thahr Al-Sarow Basic School for Boys- Jerash	31
7.4 Jumana Bint Abi-Taleb Basic Mixed School- Amman	37
7.5 Engineer comments on work progress	43
7.6 Tracking Tasks in CPM	45
<b>8   Submitted Materials</b>	<b>46</b>
8.1 Summary of Submitted Materials	46
8.2 Shop Drawings & Submittal Tracking LOG	47
8.3 Materials Submittal Vendor List	47

<b>9   Correspondence Tracking Logs</b>	<b>48</b>
<b>10   Non-conformance Report Tracking Log</b>	<b>48</b>
10.1 HSE	48
10.2 QCs	48
Hay Al Iskan Basic Mixed School- Jerash	48
Thahr Al Sarow Basic School for Boys- Jerash	50
Jumana Bint Abi Taleb Basic Mixed School- Amman	51
10.3 NCRs	52
<b>11   Request For Information Tracking Logs</b>	<b>53</b>
11.1 RFIs-Designer	53
11.2 RFIs-Contractor	53
<b>12   Site problems and Solutions</b>	<b>53</b>
12.1 Hay Al Iskan Basic Mixed School-Jerash	53
12.2 Thahr Al Sarow Basic School for Boys-Jerash	54
12.3 Jumana Bint Abi Taleb Basic Mixed School- Amman	55
<b>13   Meetings and Site Visits</b>	<b>56</b>
13.1 Coordination & Progress Meetings	56
13.2 Site Visits	57
13.3 Regular Monthly Site Visits (Home Office Support)	70
<b>14   Manpower Logs</b>	<b>72</b>
14.1 Hay Al Iskan Basic Mixed School – Jerash Progress	72
14.2 Thahr Al Sarow Basic School for Boys-Jerash	72
14.3 Jumana Bint Abi Taleb Basic Mixed School- Amman	72
<b>Manpower Link</b>	<b>72</b>
<b>15   Daily Plant and Equipment</b>	<b>72</b>
15.1 Hay Al Iskan Basic Mixed School – Jerash Progress	72
15.2 Thahr Al-Sarow Basic School for Boys- Jerash	72
15.3 Jumana Bint Abi-Taleb Basic Mixed School- Amman	72
<b>16   Lab-test Results Tracking Log</b>	<b>73</b>
16.1 Hay Al Iskan Basic Mixed School – Jerash	73
16.2 Thahr Al-Sarow Basic School for Boys- Jerash	73
16.3 Jumana Bint Abi-Taleb Basic Mixed School- Amman	73

---

16.4	Comments on Laboratory Testing	73
<b>17</b>	<b>  Obstacles Log (Site Obstacles)</b>	<b>73</b>
17.1	Hay Al Iskan Basic Mixed School - Jerash	74
17.2	Thahr Al Sarow Basic School for Boys – Jerash SOLVED	77
<b>18</b>	<b>  Weather Condition</b>	<b>78</b>
18.1	Hay Al Iskan Basic Mixed School – Jerash	78
18.2	Thahr Al-Sarow Basic School for Boys- Jerash	78
18.3	Jumana Bint Abi-Taleb Basic Mixed School- Amman	78
<b>19</b>	<b>  Selected Photos</b>	<b>79</b>
19.1	Hay Al Iskan Basic Mixed School- Jerash	79
19.2	Thahr Al Sarow Basic School for Boys- Jerash	82
19.3	Jumana Bint Abi Taleb Basic Mixed School - Amman	83
20.1	Hay Al Iskan Basic Mixed School – Jerash	84
20.2	Thahr Al-Sarow Basic School for Boys - Jerash	84
20.3	Jumana Bint Abi-Taleb Basic Mixed School - Amman	84
<b>21</b>	<b>  Website Reports Links</b>	<b>84</b>
21.1	Daily Reports	84
21.2	Weekly Reports	84
21.3	Monthly Reports	84
21.4	CMT0 Inspection Reports	84
21.5	Quality Reports	84
<b>22</b>	<b>  Training</b>	<b>85</b>
22.1	Training:	85
22.2	Training Sessions:	86



## 1 | Project Particulars

### 1.1 Contract Main Information

Contract Name:	School for Knowledge Economy Project (SKEP) Phase III – Package (2)
Owner:	Ministry of Education (MOE)
Employer:	Ministry of Public Works & Housing (MPWH)
Funded By:	United States Agency for International Development (USAID)
Consultant:	Wahib Medanat Consultant Engineers
Project Management:	Trigon Associates (CMTO)
Contractor:	Dijlah Establishment Constr. Contracting
Contract No.:	10/2019/USAID/SKEP/3/2
Commencement Date:	21/10/2020
Time for Substantial Completion of the Work:	Thahr Al-Sarow Basic School for Boys- Jerash: 450 Days
	Jumana Bint Abi-Taleb Basic Mixed School- Amman: 450 Days
	Hay Al Iskan Basic Mixed School – Jerash : 450 Days
Time to Complete the Work Including Punch List Items:	Within 14 Calendar days for each School from the date of taking over committee inspection
Contract Amount at Award:	8,314,983.735 JOD
Amount of Liquidated Damages:	Thahr Al Sarow Basic School for Boys- Jerash: 2000 JOD/ Day but not to exceed 15% of total amount for the School

	Jumana Bint Abi Taleb Basic Mixed School- Amman: 200 JOD/ Day but not to exceed 15% of total amount for the School
	Hay Al Iskan Basic Mixed School- Jerash: 2000 JOD/ Day but not to exceed 15% of the total amount for the School
Defects Liability Period:	(730) Calendar Days for all Civil & Electromechanical works from the date of Substantial Completion for each school including the maintenance of plantation works
Maintenance Guarantee for Defects Liability Period:	5% of the final Contract Sum
Percentage of Retention from Interim Payment Certificate:	10% of each payment
Limit of Retention Money:	5% of Contract Sum as amended
Period of Time for Payment to be made after Certification by the Engineer:	60 Calendar Days
Minimum Amount of Interim Payment Certificate:	JOD 300,000 (Three hundred thousand Jordanian Dinar) for all schools under the Package
Payment for Imported Materials	40% upon receipt of approved bill of lading and another 20% when stored on site to the Engineer's approval
Payment for Local Materials and Equipment	60% and restricted to cement and reinforcing steel when stored on site to the Engineer's approval.

## 1.2 Executive Summary

The Ministry of Education represented by the Ministry of Public Works & Housing has received a grant from USAID to finance the construction of:

School for Knowledge Economy Project (SKEP) – Phase III – Package (2)

The package consists of construction of three (3) Schools at different locations, two schools in Jerash and one School in Amman.

The project consists of construction of new classrooms, computer labs, laboratories, public utilities...etc., and site works for group of schools as shown in the Tender Documents, the Schools are:

### A- Hay Al-Iskan Basic School Mixed School – Jerash

The project consists of a five floors building, with a total approximate area of 5420 m<sup>2</sup> in addition to site works as deemed in the drawings and BOQ.

#### Main Elements

Land Area =6322.090 m2			External Works = 4523 m2					no . of floor = 5		
Floor	F.F.L	Area (m2)	no.of classroom grade (1-3)	no.of classroom grade (4-10)	no . Of KG classroom	student for each classroom	student in floor	General Toilets	Mens Toilets	Womens Toilets
Basement	109.06	330.35	-	-	-	-	-	-	-	-
Ground	112.7	1799.75	-	-	2	24	48	3*7 m2 with HC toilet for each one AND child care toilet	1*9 m2	1*12 m2
First	116.34	1571.45	9	-	-	36	324	HC toilet , STAFF	23 m2	23 m2 with
second	119.98	1571.45	-	14	-	36	504	6 m2 HC toilet, STAFF	-	27*2 m2
Roof	123.47	105.1	-	-	-	-	-	-	-	-
External Works	Guard Room	22.4/34/65.9	-	-	-	-	-	-	-	-
Total		5378.1	25		-	-	876	-	32	89

□ Location Link:

[Hay Al Iskan Basic Mixed School – Jerash](#)

## B- Thahr Al-Sarow Basic School for Boys – Jerash

The project consists of a five floors building, with a total approximate area of 4615 m<sup>2</sup> in addition to site works as deemed in the drawings and BOQ.

### Main Elements

Land Area =4036 m2					External Works = 2790 m2			no . of floor = 4		
Floor	F.F.L	Area (m2)	no.of classroom grade (1-3)	no.of classroom grade (4-10)	no . Of KG classroom	student for each classroom	student in floor	General Toilets	Mens Toilets	Womens Toilets
Ground	106	1245.61	-	-	-	-	0	2*toilets (men & Women) 25 m2 and 2*HC toilets	8.5 m2 men toilet	16.5 m2 women toilet
First	109.64	1057.71	-	7	-	36	252	1*39.5 m2 toilet with HC toilet	-	-
Second	113.28	1057.71	-	7	-	36	252	1*39.5 m2 toilet with HC toilet	-	-
Third	116.92	1057.71	-	7	-	36	252	1*39.5 m2 toilet with HC toilet	-	-
Roof	120.56	91.44	-	-	-	-	-	-	-	-
Service Building	120.56	104.47	-	-	-	-	-	-	-	-
External Works	-	2685.9	-	-	-	-	-	-	-	-
<b>Total</b>		<b>7300.55</b>	<b>21</b>			<b>-</b>	<b>756</b>	<b>143.5</b>	<b>8.5</b>	<b>16.2</b>

□ Location Link:

[Thahr Al-Sarow Basic School for Boys](#)

## C- Jumana Bint Abi Taleb Basic Mixed School – Amman

The project consists of a five floors building, with a total approximate area of 5460 m<sup>2</sup> in addition to site works deemed in the drawings and BOQ.

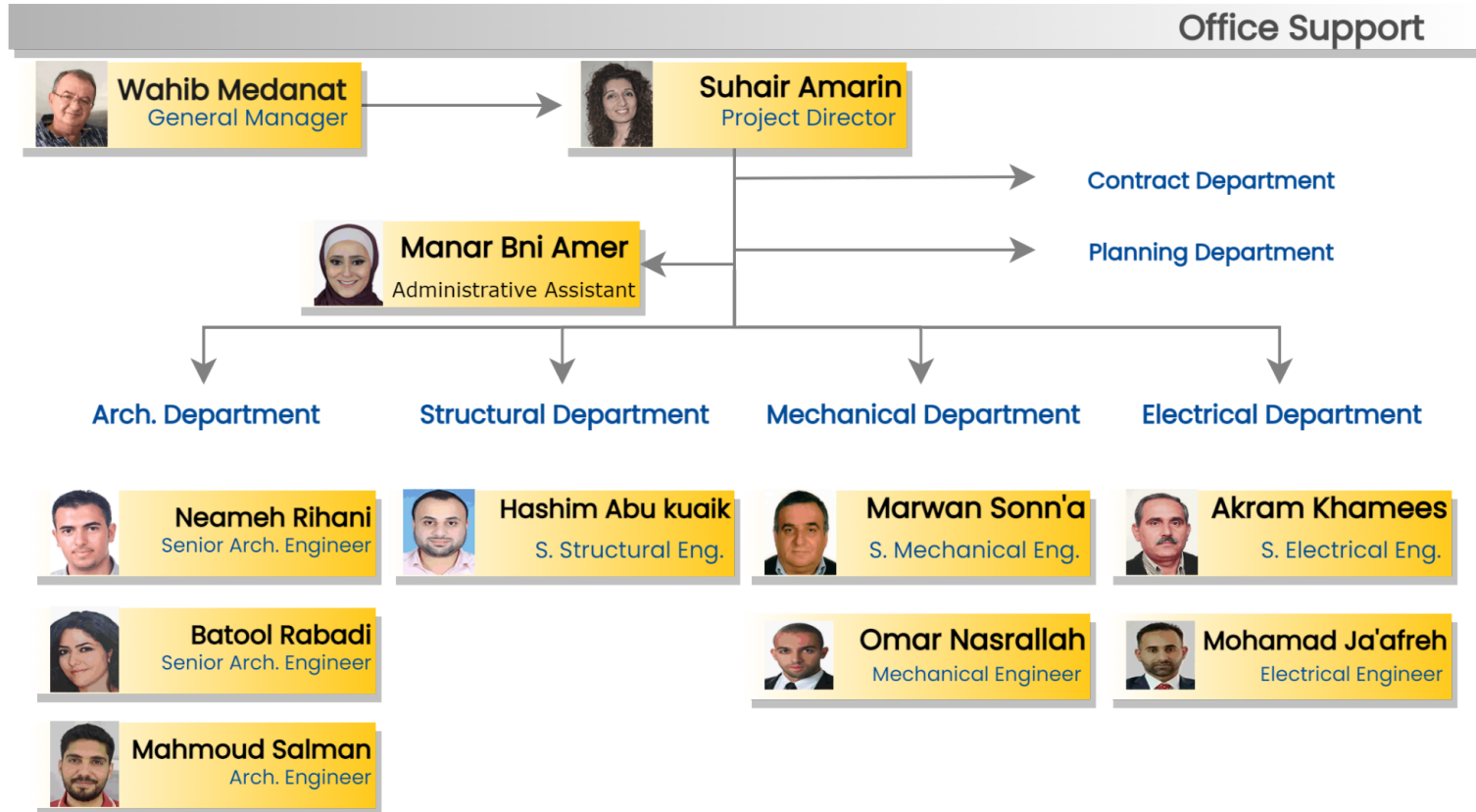
### Main Elements

Jumana Bint Abi Taleb Basic Mixed School										
Land Area =7556 m2			External Works = 5665 m2					no . of floor = 4		
Floor	F.F.L	Area (m2)	no.of classroom grade (1-3)	no.of classroom grade (4-10)	no . Of KG classroom m	student for each classroom m	student in floor	General Toilets	Mens Toilets	Womens Toilets
<b>Basement</b>	95.05	293.87	-	-	-	-	-	-	-	-
<b>Ground</b>	98.65	1891.29	-	-	4	24	96	2*26 m2 with HC toilet for each one	1*11 m2	1*11 m2
<b>First</b>	102.29	1591.17	9	-	-	36	324	-	1*17 m2 with 6 m2 HC toilet	1*22 m2 with janitor.
<b>Second</b>	105.93	1591.17	-	14	-	36	504	-	-	1*40 m2 with 6 m2 HC toilet 1*28 m2
<b>Roof</b>	109.57	73.1	-	-	-	-	-	-	-	-
<b>External Works</b>	-	5665	-	-	-	-	-	-	-	-
<b>Total</b>		<b>11105.6</b>		<b>27</b>		<b>-</b>	<b>924</b>	<b>52</b>	<b>34</b>	<b>107</b>

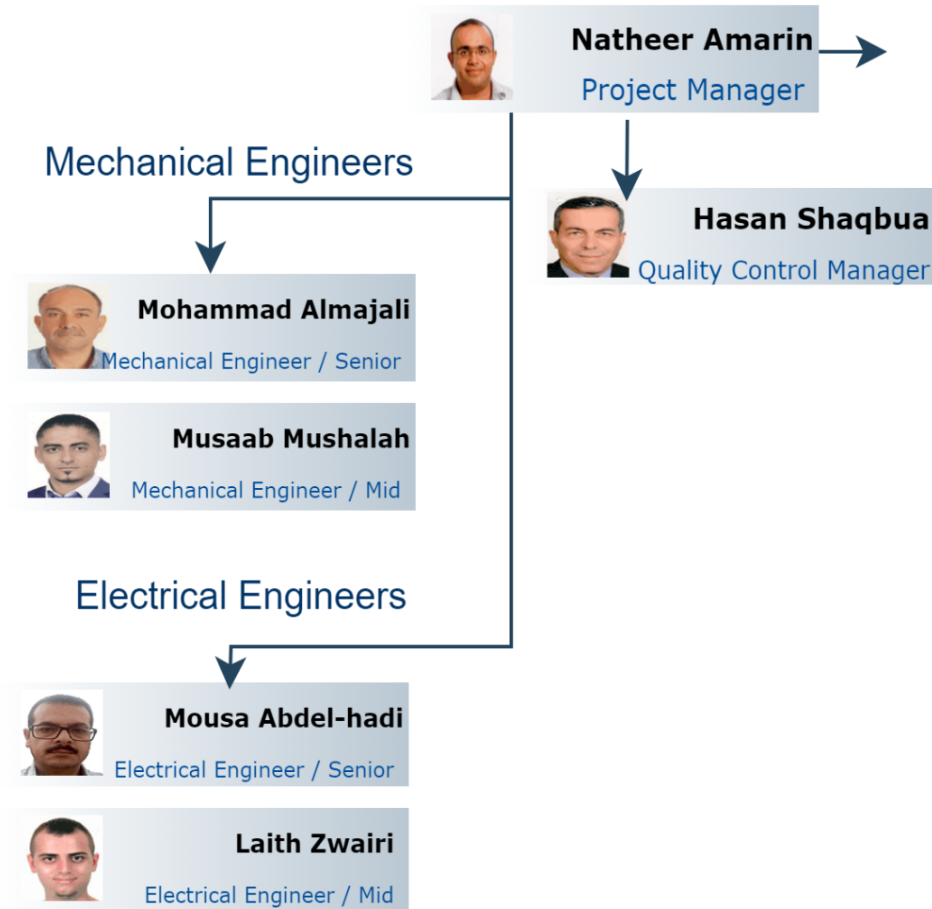
□ Location Link:

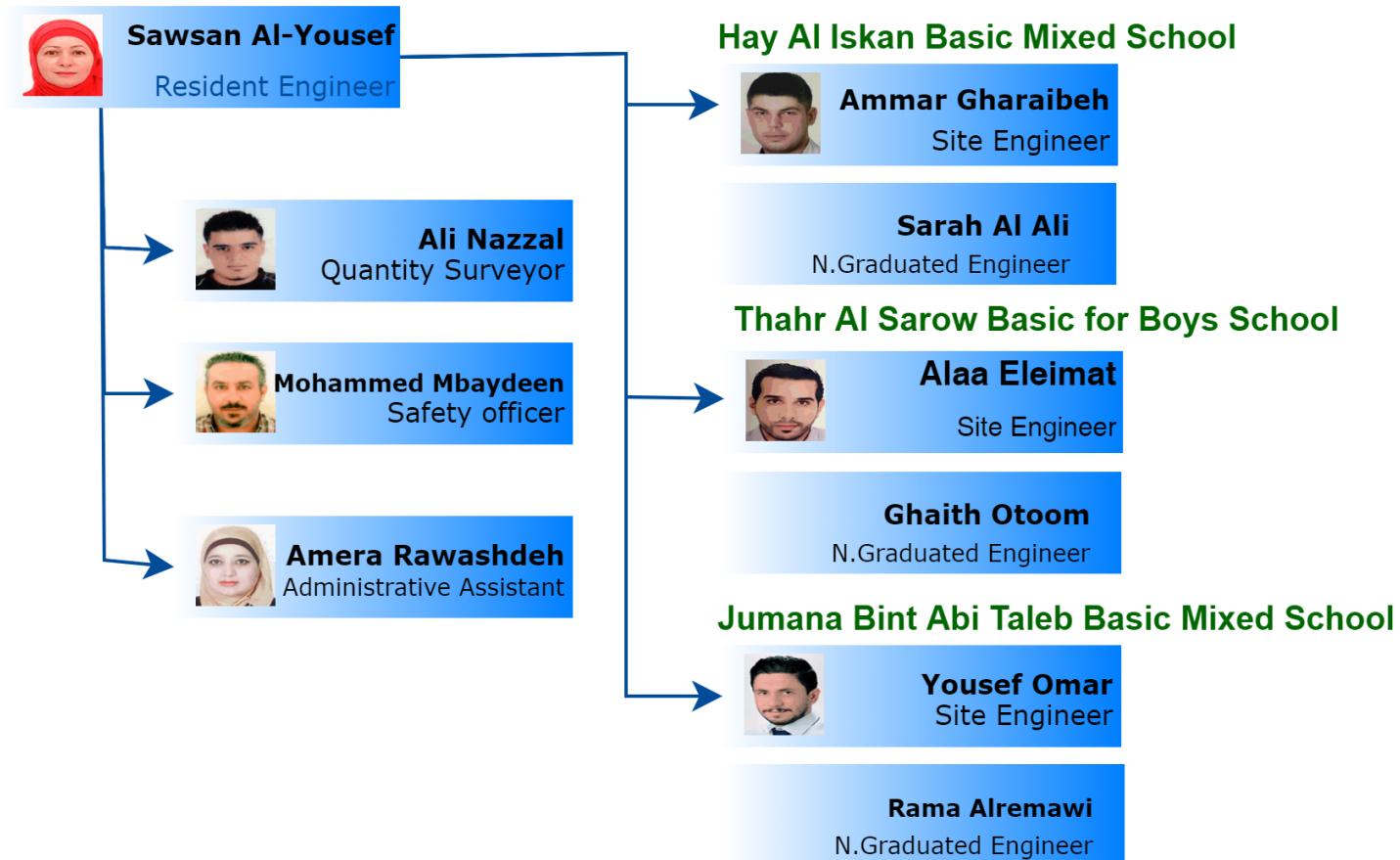
[Jumana Bint Abi-Taleb Basic Mixed School](#)

## 2 | Consultant Organisation Project Staff



Package 1,2





□ website Link: <https://www.medanat.site/skepiii-staff>



### 3 | Summary of Activities

#### 3.1 Hay Al-Iskan Basic School Mixed School – Jerash

- <https://docs.google.com/spreadsheets/d/e/2PACX-1vTdARJRLc4huFLO4AQUqDPAhQJUfPEcNXShUUUjFvnYQAY0QXUaVgSpteSczft7ytePCZFsXte-zDm5/pubhtml?gid=0&single=true>

#### 3.2 Thahr Al-Sarow Basic School for Boys- Jerash

- <https://docs.google.com/spreadsheets/d/e/2PACX-1vTdARJRLc4huFLO4AQUqDPAhQJUfPEcNXShUUUjFvnYQAY0QXUaVgSpteSczft7ytePCZFsXte-zDm5/pubhtml?gid=834925315&single=true>

#### 3.3 Jumana Bint Abi-Taleb Basic Mixed School- Amman

- <https://docs.google.com/spreadsheets/d/e/2PACX-1vTdARJRLc4huFLO4AQUqDPAhQJUfPEcNXShUUUjFvnYQAY0QXUaVgSpteSczft7ytePCZFsXte-zDm5/pubhtml?gid=234544642&single=true>

#### 3.4 Mobilization Tracking Log

- <https://docs.google.com/spreadsheets/d/e/2PACX-1vReTBFC4gsmD4JKKeKoUVg33Y48DUtJ0y0BJdlBtkszhEL57imvzsLTZMNUFOtirfWcJCs7qCZDUNRK/pubhtml?gid=18990041&single=true>

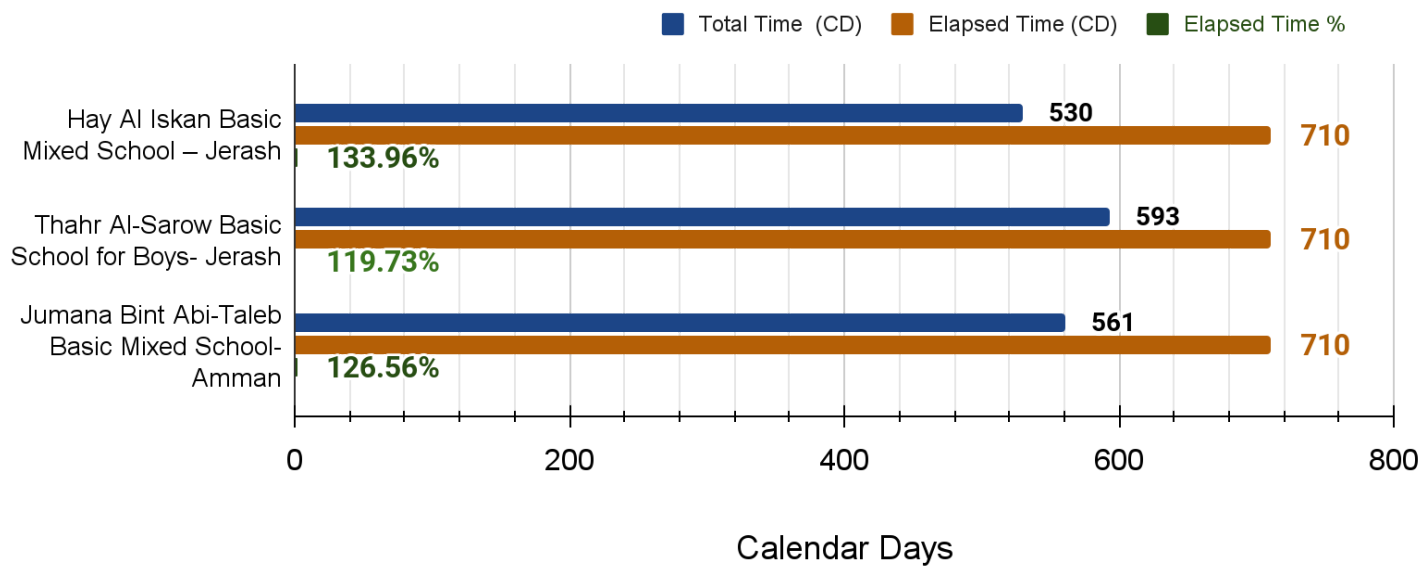
#### 3.5 Log of Activities

- [https://docs.google.com/spreadsheets/d/e/2PACX-1vTRyaUQQ4YWbw\\_bluczIK9BG7WrQinH8y9jW4YizGMmCpL9us\\_OtDXJrbErUPn8D3fLF7d0TaAlq8Aa/pubhtml?gid=1004043320&single=true](https://docs.google.com/spreadsheets/d/e/2PACX-1vTRyaUQQ4YWbw_bluczIK9BG7WrQinH8y9jW4YizGMmCpL9us_OtDXJrbErUPn8D3fLF7d0TaAlq8Aa/pubhtml?gid=1004043320&single=true)

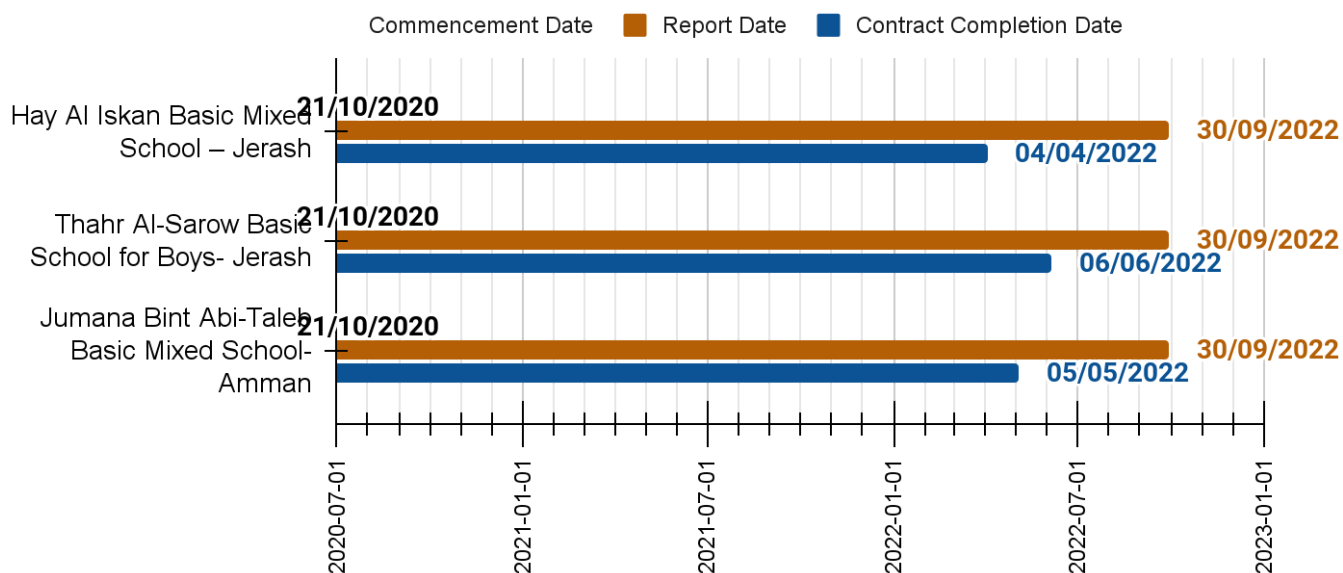
## 4 | Project Time and Duration

PGK 2 Report Date		2022-09-30			
	Site Name	Contract Duration (CD)	Approved Time Extension (CD)	Add. Time Extension (CD)	Total Time (CD)
21	Hay Al Iskan Basic Mixed School – Jerash	450	80	0	530
22	Thahr Al-Sarow Basic School for Boys- Jerash	450	143	0	593
23	Jumana Bint Abi-Taleb Basic Mixed School- Amman	450	111	0	561

### SKEP III PKG 2 Time Chart



	Site Name	Commencement Date	Report Date
21	Hay Al Iskan Basic Mixed School – Jerash	2020-10-21	2022-09-30
22	Thahr Al-Sarow Basic School for Boys- Jerash	2020-10-21	2022-09-30
23	Jumana Bint Abi-Taleb Basic Mixed School- Amman	2020-10-21	2022-09-30



## 5 | Project Contract & V.O's

### Package 2 Contract & V.O's

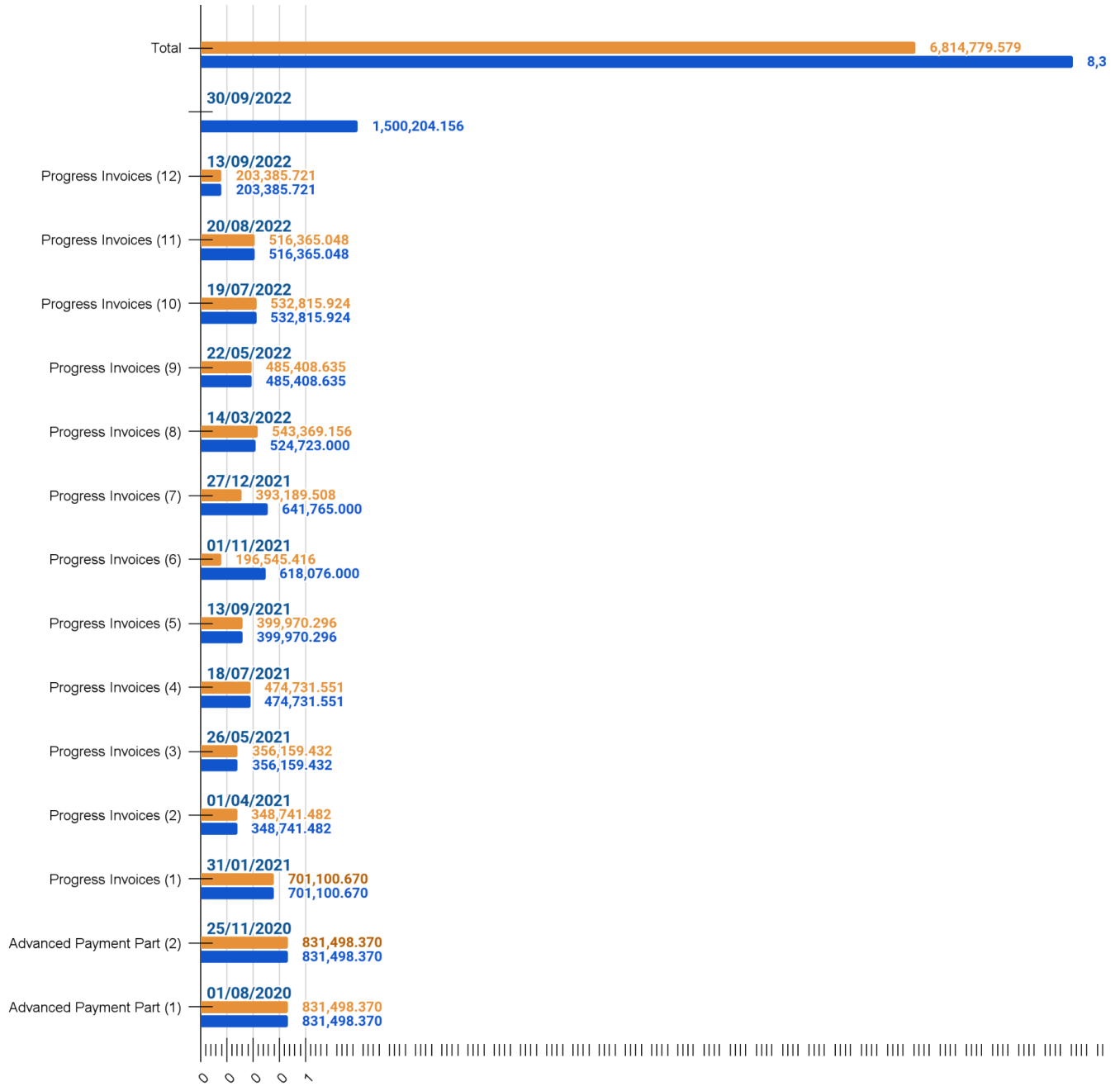
School Name	Contract Value JD		Provisional Sums JD		General Requirements JD		V.O.		Total Contract Value JD
	Original	After 1.5 % Deduction	Geotechnical Tests	Shoring	Value	After 1.5 % Deduction	V.O Description	Value JD	
Hay Al Iskan Basic Mixed School	2686848	2646545.28	11000	82500	45900	45211.5	Execution additional mechanical works/ Galvanised Pipes	2180	2791536.78
							Usp	4100	
Thahr Al Sarow Basic School	2329182	2294244.27	11000	55000	43450	42798.25	Cyclopean Concrete	4531	2437566.52
							Additional Quantities	29993	
Jumana Bint Abi Taleb Basic Mixed School	2936321	2892276.18	11000	55000	69450	68408.25	Cancellation of Sewage Connection Tank	-38739.065	2987945.365
<b>Total</b>	<b>7952351</b>	<b>7833065.73</b>	<b>225500</b>		<b>158800</b>	<b>156418</b>		<b>2064.935</b>	<b>8217048.665</b>
Provisional sum (Utilities)									100000
<b>Total Amount</b>									<b>8317048.665</b>

## 6 | Cash Flow

Package 2- Cash Flow			
Payment	Date of Payment	Actual Amount (JD)	Scheduled (JD)
Advanced Payment Part (1)	01/08/2020	831,498.370	831,498.370
Advanced Payment Part (2)	25/11/2020	831,498.370	831,498.370
Progress Invoices (1)	31/01/2021	701,100.670	701,100.670
Progress Invoices (2)	01/04/2021	348,741.482	348,741.482
Progress Invoices (3)	26/05/2021	356,159.432	356,159.432
Progress Invoices (4)	18/07/2021	474,731.551	474,731.551
Progress Invoices (5)	13/09/2021	399,970.296	399,970.296
Progress Invoices (6)	01/11/2021	196,545.416	618,076.000
Progress Invoices (7)	27/12/2021	393,189.508	641,765.000
Progress Invoices (8)	14/03/2022	543,369.156	524,723.000
Progress Invoices (9)	22/05/2022	485,408.635	485,408.635
Progress Invoices (10)	19/07/2022	532,815.924	532,815.924
Progress Invoices (11)	20/08/2022	516,365.048	516,365.048
Progress Invoices (12)	13/09/2022	203,385.721	203,385.721
	30/09/2022		1,500,204.156
<b>Total</b>		<b>6,814,779.579</b>	<b>8,314,983.735</b>
<b>% From Contract Value</b>		<b>81.96%</b>	

**Package 2- Cash Flow**

Date of Payment ■ Actual Amount (JD) ■ Scheduled (JD)

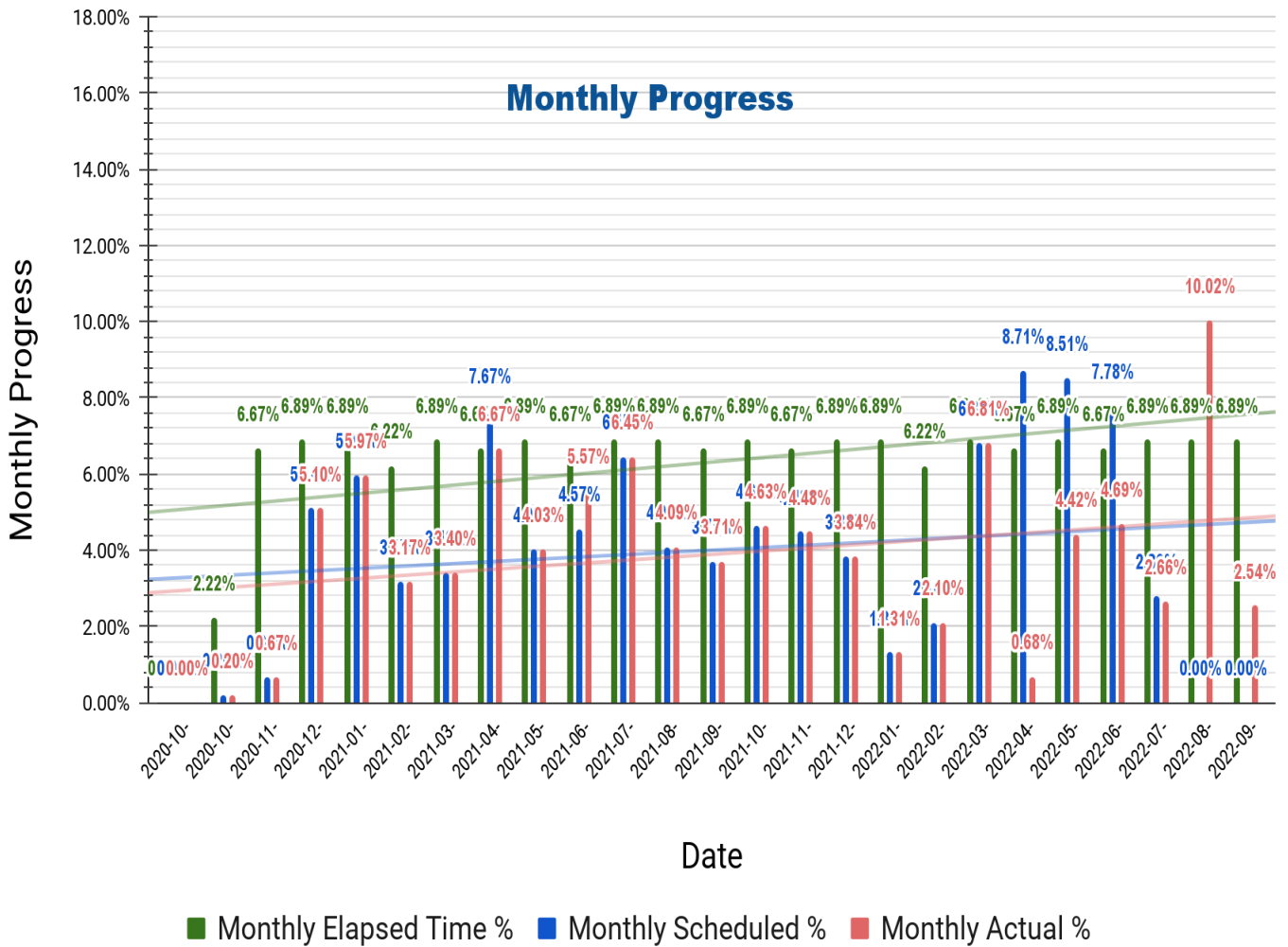


## 7 | Progress

### 7.1 Package 2 Average Progress

Package 2 Monthly Progress			
Date	Monthly Elapsed Time %	Monthly Scheduled %	Monthly Actual %
2020-10-21	0.00%	0.00%	0.00%
2020-10-31	2.22%	0.20%	0.20%
2020-11-30	6.67%	0.67%	0.67%
2020-12-31	6.89%	5.10%	5.10%
2021-01-31	6.89%	5.97%	5.97%
2021-02-28	6.22%	3.17%	3.17%
2021-03-31	6.89%	3.40%	3.40%
2021-04-30	6.67%	7.67%	6.67%
2021-05-31	6.89%	4.03%	4.03%
2021-06-30	6.67%	4.57%	5.57%
2021-07-31	6.89%	6.45%	6.45%
2021-08-31	6.89%	4.09%	4.09%
2021-09-30	6.67%	3.71%	3.71%
2021-10-31	6.89%	4.63%	4.63%
2021-11-30	6.67%	4.48%	4.48%
2021-12-31	6.89%	3.84%	3.84%
2022-01-31	6.89%	1.31%	1.31%
2022-02-28	6.22%	2.10%	2.10%
2022-03-31	6.89%	6.81%	6.81%
2022-04-30	6.67%	8.71%	0.68%
2022-05-31	6.89%	8.51%	4.42%
2022-06-30	6.67%	7.78%	4.69%
2022-07-31	6.89%	2.80%	2.66%
2022-08-31	6.89%	0.00%	10.02%
2022-09-30	6.89%	0.00%	2.54%
	<b>144.03%</b>	<b>100.00%</b>	<b>97.22%</b>

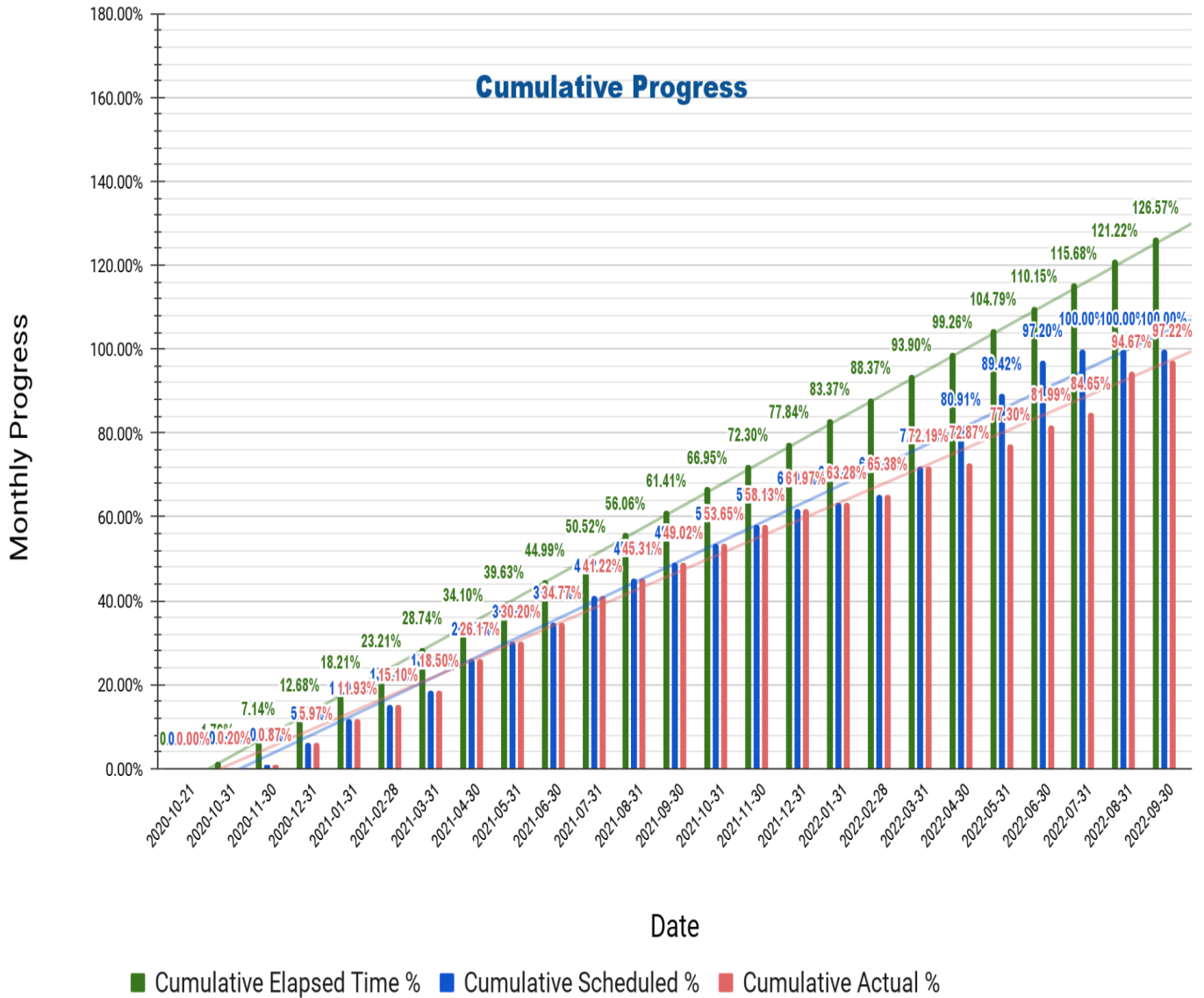
## Package 2



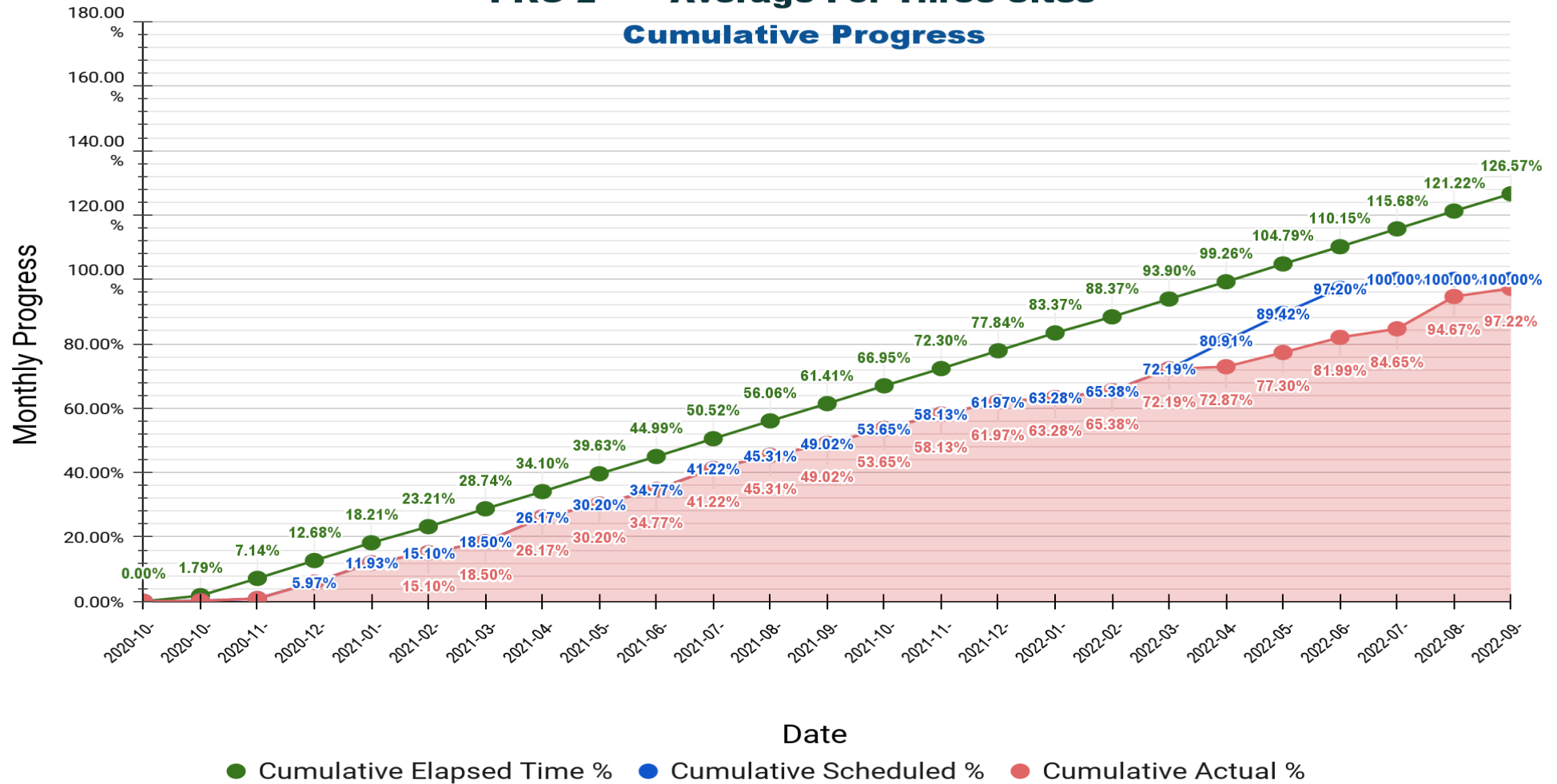


<b>Package 2 Cumulative Progress</b>			
<b>Date</b>	<b>Cumulative Elapsed Time %</b>	<b>Cumulative Scheduled %</b>	<b>Cumulative Actual %</b>
2020-10-21	0.00%	0.00%	0.00%
2020-10-31	1.79%	0.20%	0.20%
2020-11-30	7.14%	0.87%	0.87%
2020-12-31	12.68%	5.97%	5.97%
2021-01-31	18.21%	11.93%	11.93%
2021-02-28	23.21%	15.10%	15.10%
2021-03-31	28.74%	18.50%	18.50%
2021-04-30	34.10%	26.17%	26.17%
2021-05-31	39.63%	30.20%	30.20%
2021-06-30	44.99%	34.77%	34.77%
2021-07-31	50.52%	41.22%	41.22%
2021-08-31	56.06%	45.31%	45.31%
2021-09-30	61.41%	49.02%	49.02%
2021-10-31	66.95%	53.65%	53.65%
2021-11-30	72.30%	58.13%	58.13%
2021-12-31	77.84%	61.97%	61.97%
2022-01-31	83.37%	63.28%	63.28%
2022-02-28	88.37%	65.38%	65.38%
2022-03-31	93.90%	72.19%	72.19%
2022-04-30	99.26%	80.91%	72.87%
2022-05-31	104.79%	89.42%	77.30%
2022-06-30	110.15%	97.20%	81.99%
2022-07-31	115.68%	100.00%	84.65%
2022-08-31	121.22%	100.00%	94.67%
2022-09-30	126.57%	100.00%	97.22%

## PKG 2 Average For Three Sites

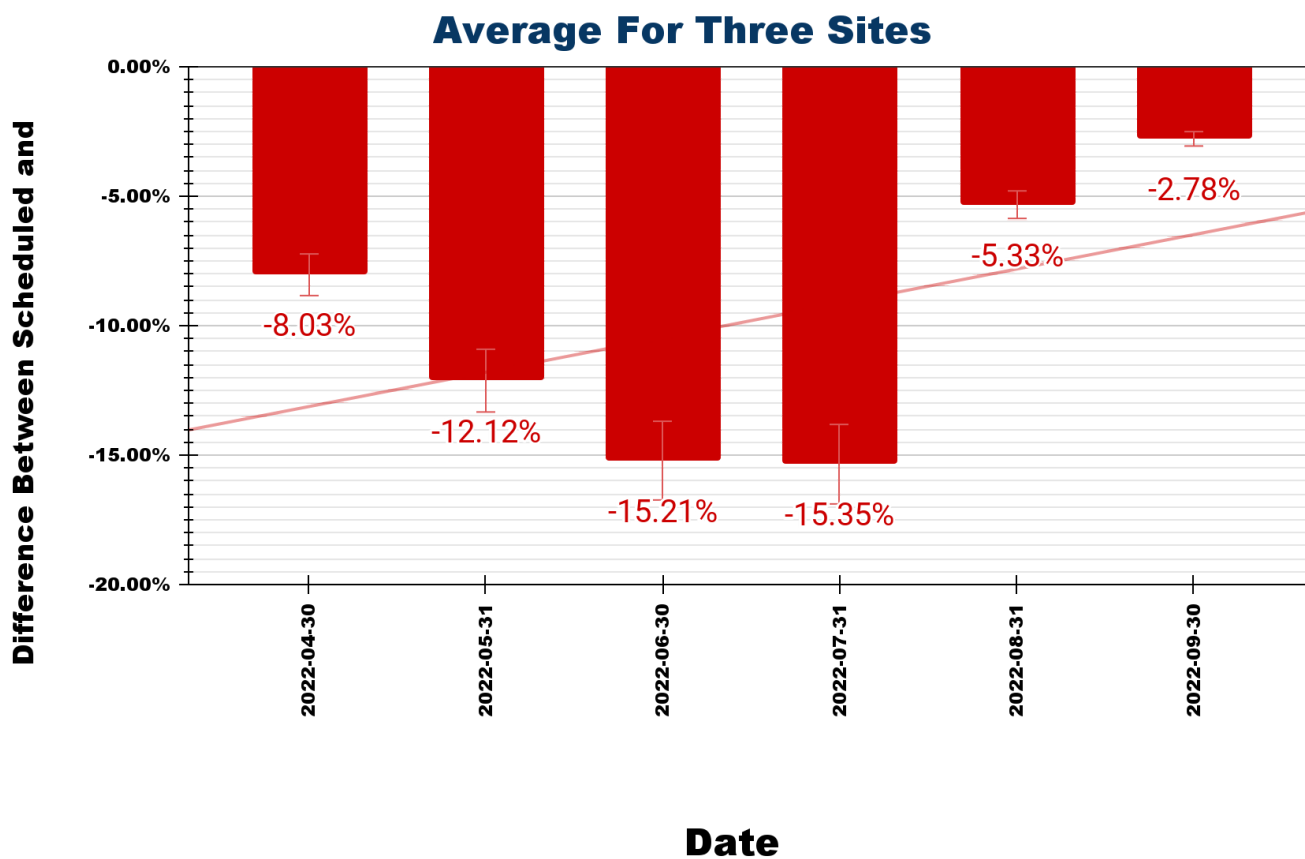


### PKG 2 Average For Three Sites Cumulative Progress



Date	Difference Between Scheduled and Actual
2022-04-30	-8.03%
2022-05-31	-12.12%
2022-06-30	-15.21%
2022-07-31	-15.35%
2022-08-31	-5.33%
2022-09-30	-2.78%

**PKG 2 Difference: Scheduled Vs. Actual**

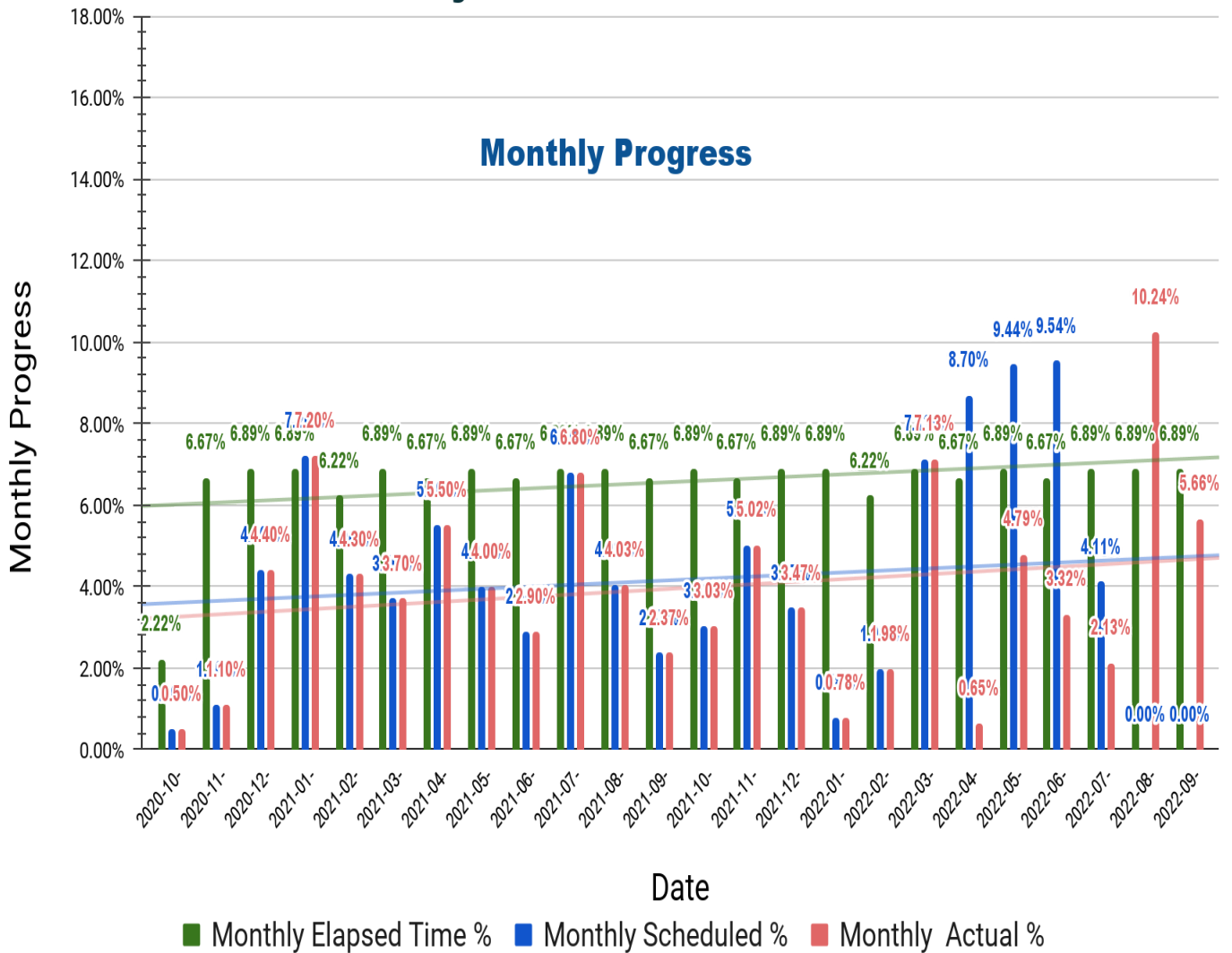


## 7.2 Hay Al Iskan Basic Mixed School – Jerash

### Hay Al Iskan Basic mixed – Jerash Monthly Progress

Date	Monthly Elapsed Time %	Monthly Scheduled %	Monthly Actual %
2020-10-31	2.22%	0.50%	0.50%
2020-11-30	6.67%	1.10%	1.10%
2020-12-31	6.89%	4.40%	4.40%
2021-01-31	6.89%	7.20%	7.20%
2021-02-28	6.22%	4.30%	4.30%
2021-03-31	6.89%	3.70%	3.70%
2021-04-30	6.67%	5.50%	5.50%
2021-05-31	6.89%	4.00%	4.00%
2021-06-30	6.67%	2.90%	2.90%
2021-07-31	6.89%	6.80%	6.80%
2021-08-31	6.89%	4.03%	4.03%
2021-09-30	6.67%	2.37%	2.37%
2021-10-31	6.89%	3.03%	3.03%
2021-11-30	6.67%	5.02%	5.02%
2021-12-31	6.89%	3.47%	3.47%
2022-01-31	6.89%	0.78%	0.78%
2022-02-28	6.22%	1.98%	1.98%
2022-03-31	6.89%	7.13%	7.13%
2022-04-30	6.67%	8.70%	0.65%
2022-05-31	6.89%	9.44%	4.79%
2022-06-30	6.67%	9.54%	3.32%
2022-07-31	6.89%	4.11%	2.13%
2022-08-31	6.89%	0.00%	10.24%
2022-09-30	6.89%	0.00%	5.66%
	144.03%	100.00%	95.00%

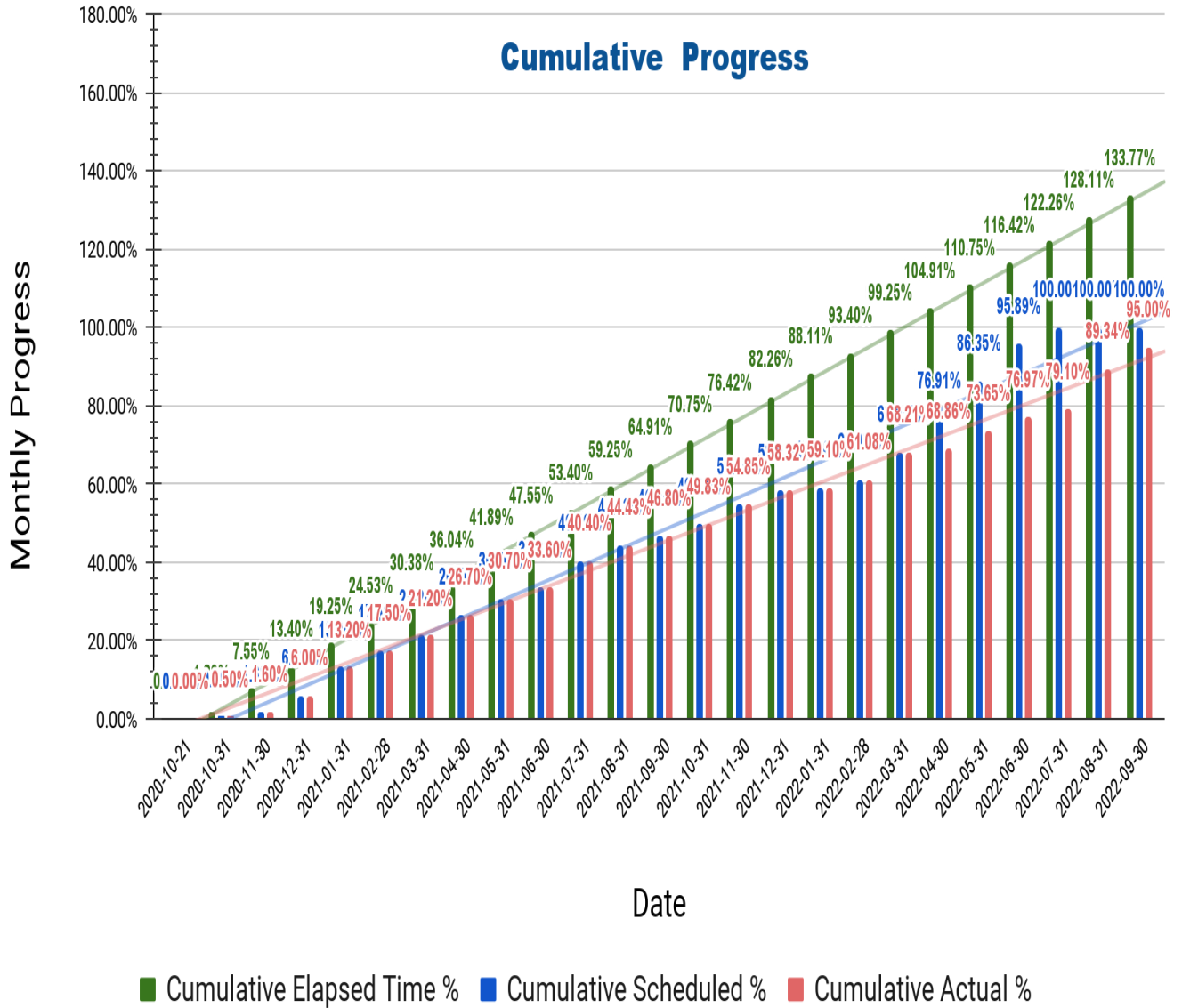
## PKG 2 Hay Al Iskan Basic mixed - Jerash



### Hay Al Iskan Basic mixed – Jerash Cumulative Progress

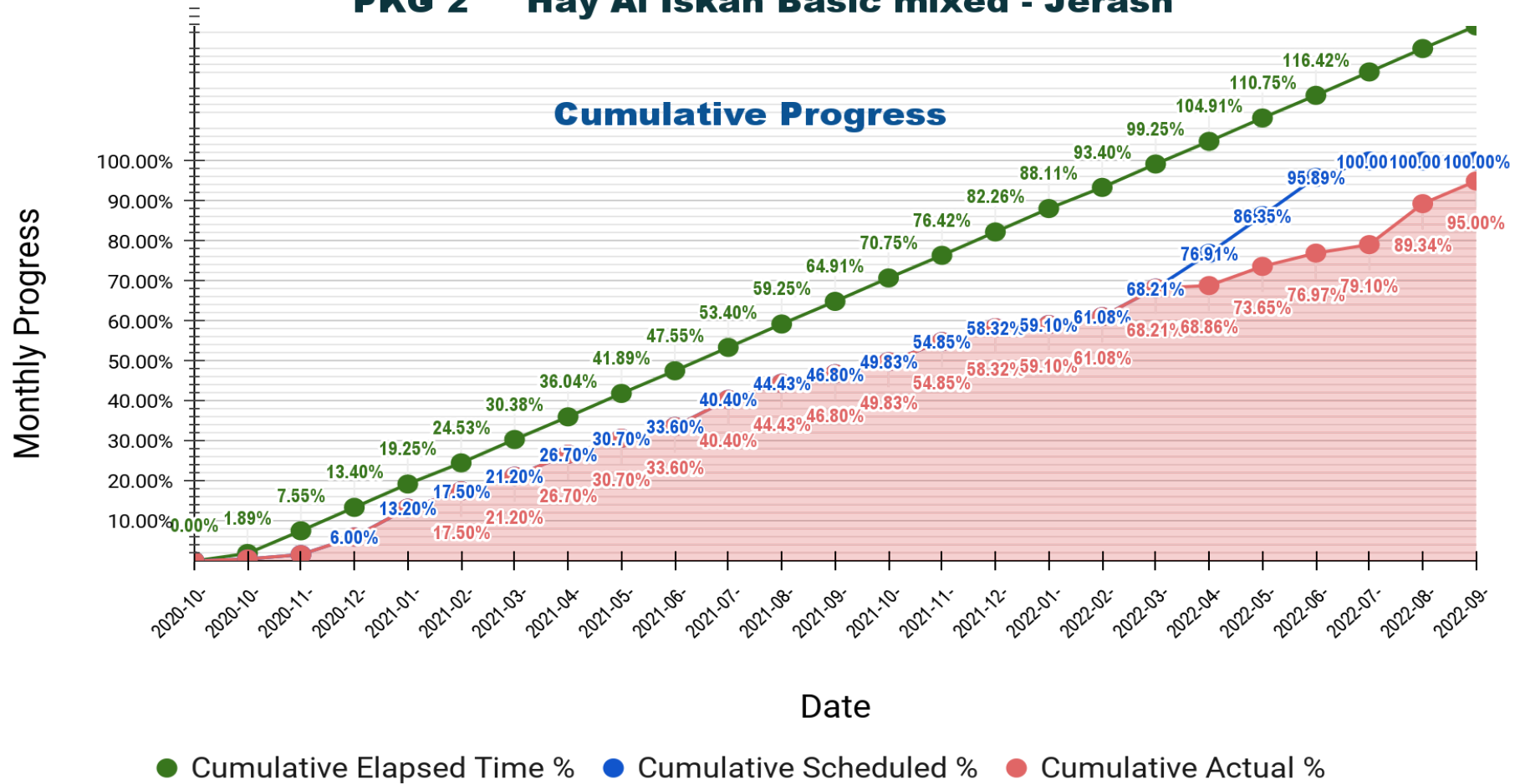
Date	Cumulative Elapsed Time %	Cumulative Scheduled %	Cumulative Actual %
2020-10-21	0.00%	0.00%	0.00%
2020-10-31	1.89%	0.50%	0.50%
2020-11-30	7.55%	1.60%	1.60%
2020-12-31	13.40%	6.00%	6.00%
2021-01-31	19.25%	13.20%	13.20%
2021-02-28	24.53%	17.50%	17.50%
2021-03-31	30.38%	21.20%	21.20%
2021-04-30	36.04%	26.70%	26.70%
2021-05-31	41.89%	30.70%	30.70%
2021-06-30	47.55%	33.60%	33.60%
2021-07-31	53.40%	40.40%	40.40%
2021-08-31	59.25%	44.43%	44.43%
2021-09-30	64.91%	46.80%	46.80%
2021-10-31	70.75%	49.83%	49.83%
2021-11-30	76.42%	54.85%	54.85%
2021-12-31	82.26%	58.32%	58.32%
2022-01-31	88.11%	59.10%	59.10%
2022-02-28	93.40%	61.08%	61.08%
2022-03-31	99.25%	68.21%	68.21%
2022-04-30	104.91%	76.91%	68.86%
2022-05-31	110.75%	86.35%	73.65%
2022-06-30	116.42%	95.89%	76.97%
2022-07-31	122.26%	100.00%	79.10%
2022-08-31	128.11%	100.00%	89.34%
2022-09-30	133.77%	100.00%	95.00%

## PKG 2 Hay Al Iskan Basic mixed - Jerash





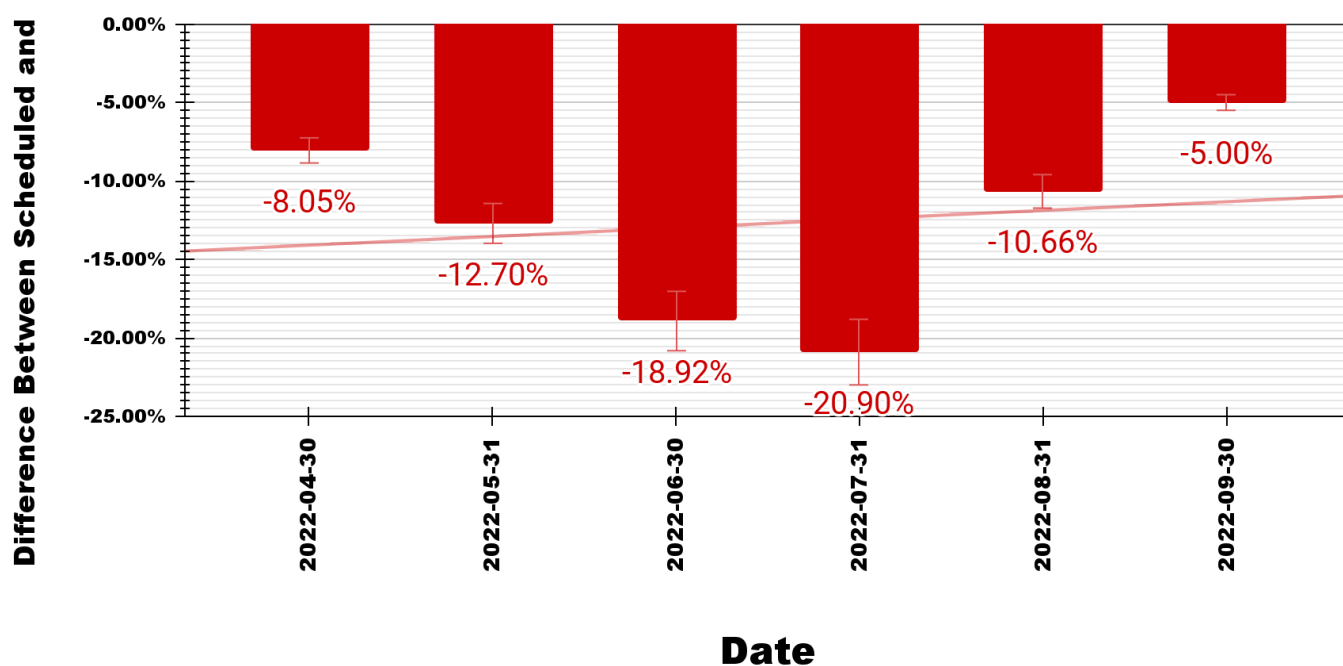
## PKG 2 Hay Al Iskan Basic mixed - Jerash



Date	Difference Between Scheduled and Actual
2022-04-30	-8.05%
2022-05-31	-12.70%
2022-06-30	-18.92%
2022-07-31	-20.90%
2022-08-31	-10.66%
2022-09-30	-5.00%

**PKG 2 Difference: Scheduled Vs. Actual**

**Hay Al Iskan Basic mixed - Jerash**



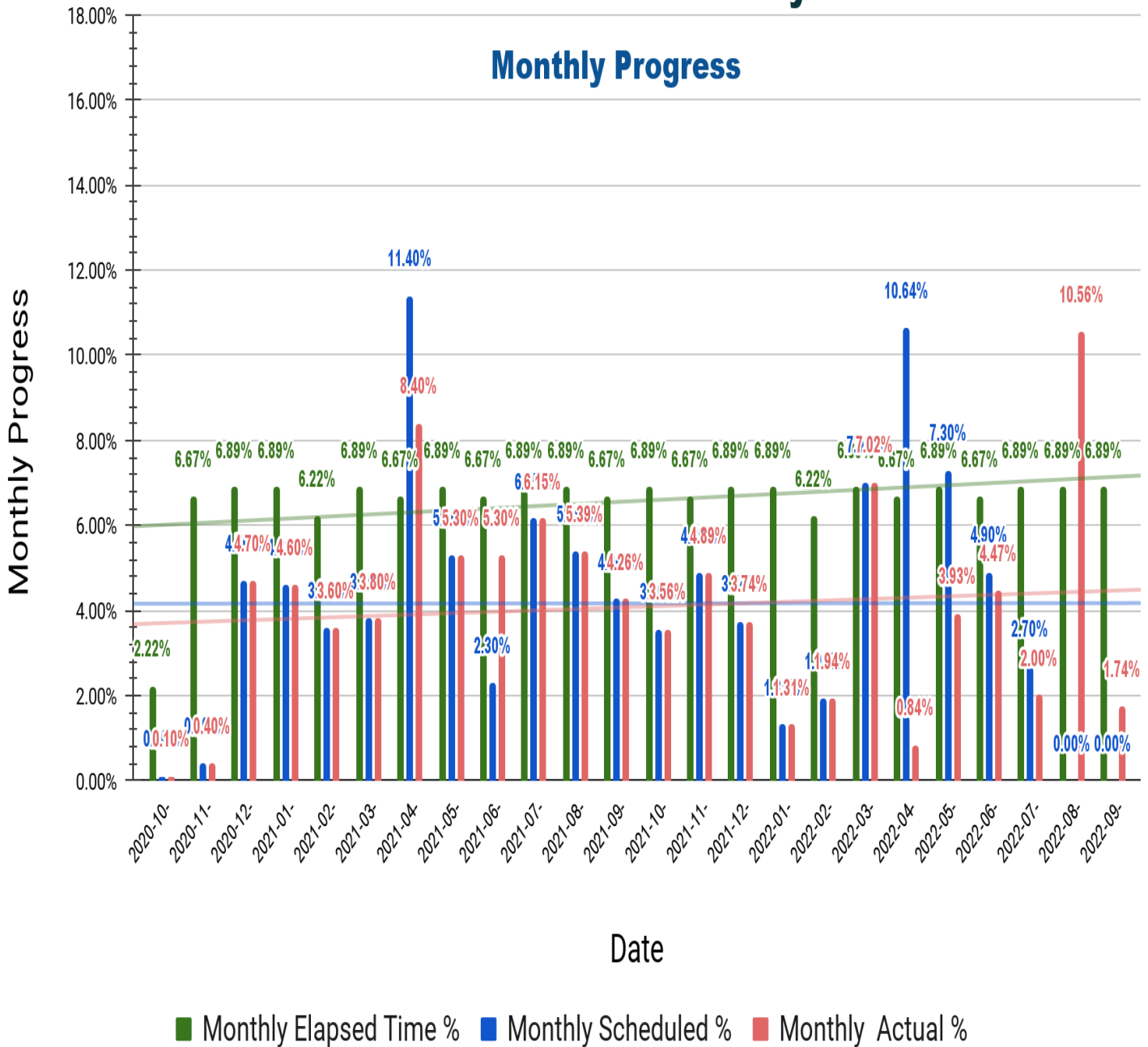
### 7.3 Thahr Al-Sarow Basic School for Boys- Jerash

#### Thahr Al-Sarow Basic School for Boys- Jerash Monthly Progress

Date	Monthly Elapsed Time %	Monthly Scheduled %	Monthly Actual %
2020-10-31	2.22%	0.10%	0.10%
2020-11-30	6.67%	0.40%	0.40%
2020-12-31	6.89%	4.70%	4.70%
2021-01-31	6.89%	4.60%	4.60%
2021-02-28	6.22%	3.60%	3.60%
2021-03-31	6.89%	3.80%	3.80%
2021-04-30	6.67%	11.40%	8.40%
2021-05-31	6.89%	5.30%	5.30%
2021-06-30	6.67%	2.30%	5.30%
2021-07-31	6.89%	6.15%	6.15%
2021-08-31	6.89%	5.39%	5.39%
2021-09-30	6.67%	4.26%	4.26%
2021-10-31	6.89%	3.56%	3.56%
2021-11-30	6.67%	4.89%	4.89%
2021-12-31	6.89%	3.74%	3.74%
2022-01-31	6.89%	1.31%	1.31%
2022-02-28	6.22%	1.94%	1.94%
2022-03-31	6.89%	7.02%	7.02%
2022-04-30	6.67%	10.64%	0.84%
2022-05-31	6.89%	7.30%	3.93%
2022-06-30	6.67%	4.90%	4.47%
2022-07-31	6.89%	2.70%	2.00%
2022-08-31	6.89%	0.00%	10.56%
2022-09-30	6.89%	0.00%	1.74%
	<b>144.03%</b>	<b>100.00%</b>	<b>98.00%</b>

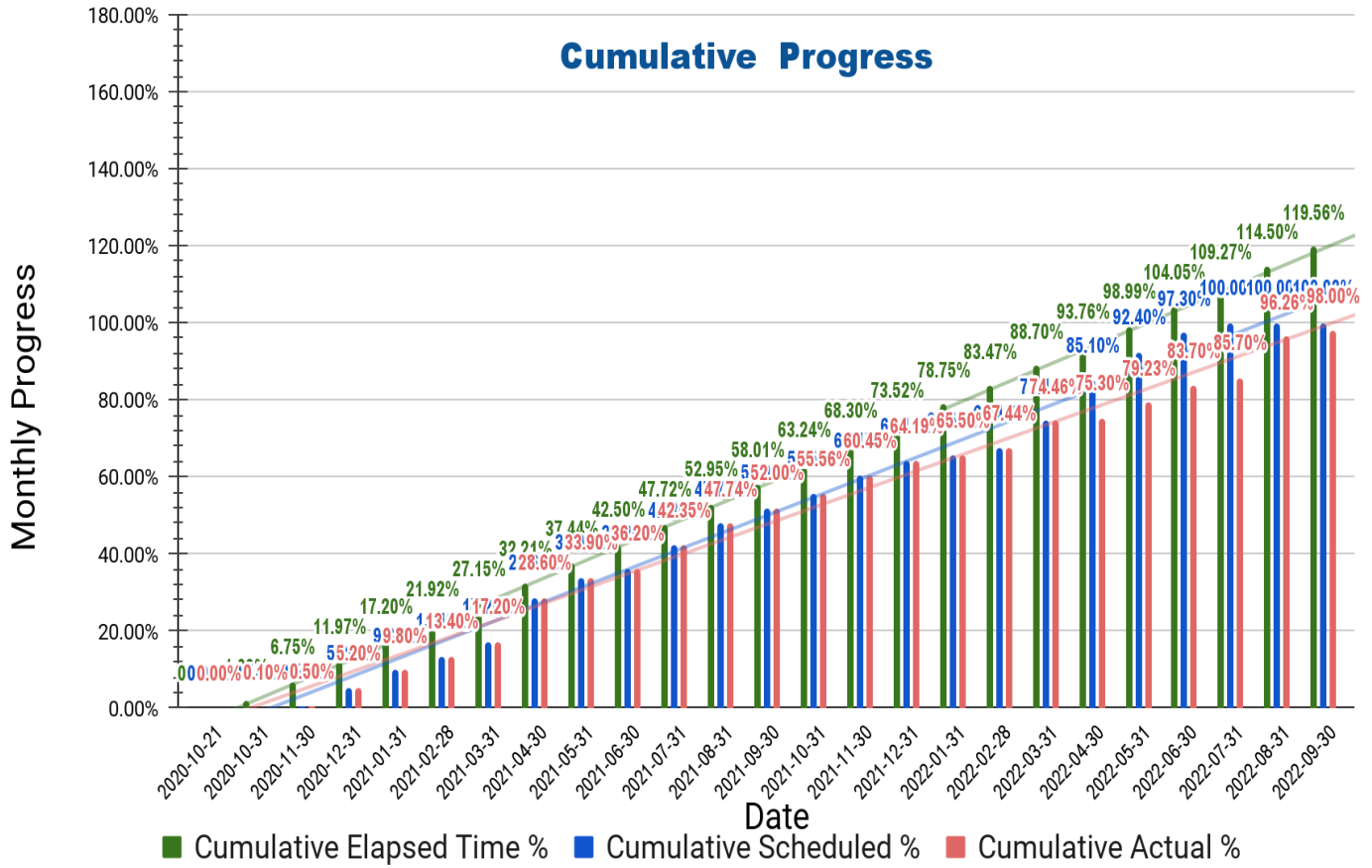
## PKG 2 Thahr Al Sarow Basic Boys - Jerash

### Monthly Progress



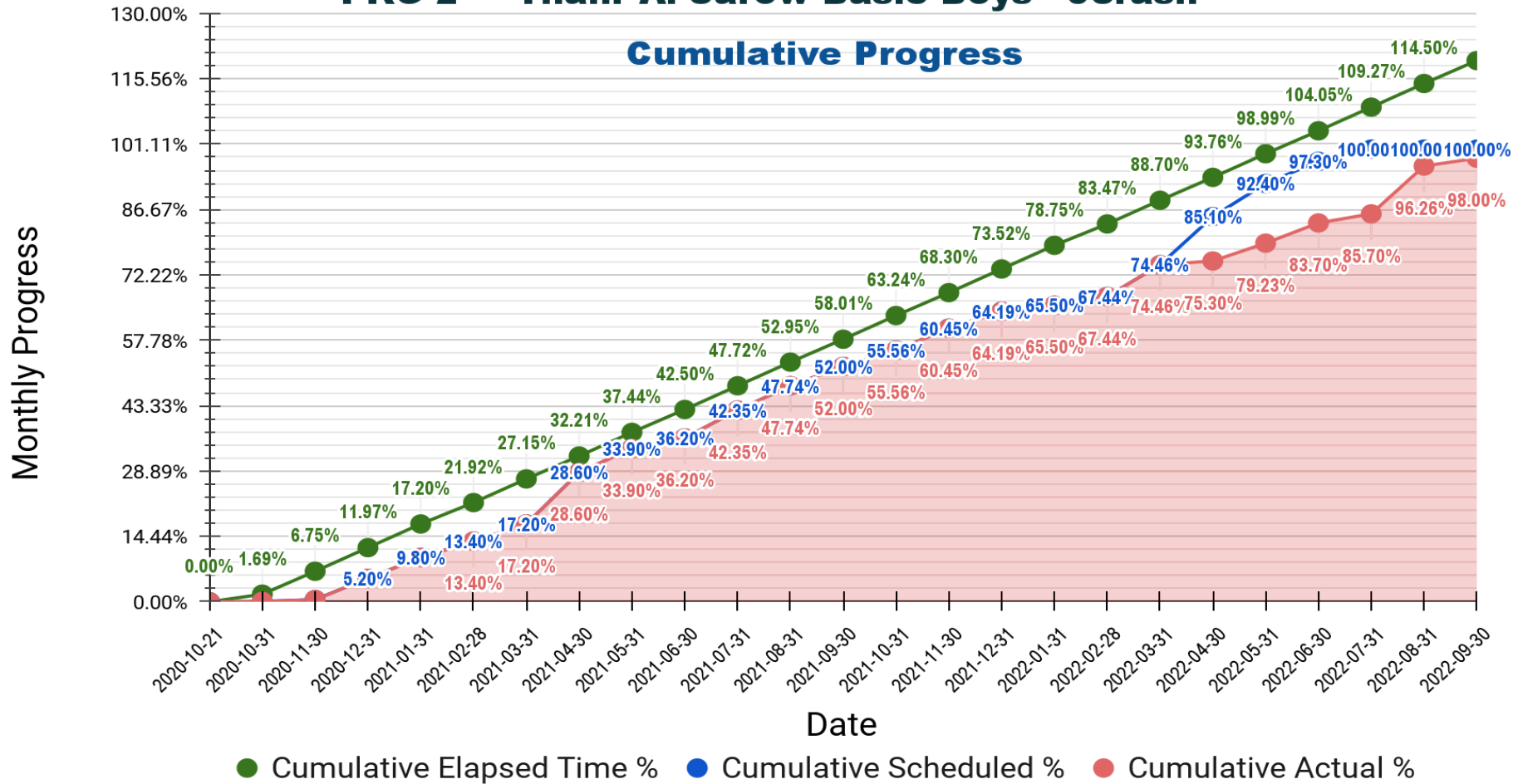
<b>Thahr Al-Sarow Basic School for Boys- Jerash Cumulative Progress</b>			
<b>Date</b>	<b>Cumulative Elapsed Time %</b>	<b>Cumulative Scheduled %</b>	<b>Cumulative Actual %</b>
2020-10-21	0.00%	0.00%	0.00%
2020-10-31	1.69%	0.10%	0.10%
2020-11-30	6.75%	0.50%	0.50%
2020-12-31	11.97%	5.20%	5.20%
2021-01-31	17.20%	9.80%	9.80%
2021-02-28	21.92%	13.40%	13.40%
2021-03-31	27.15%	17.20%	17.20%
2021-04-30	32.21%	28.60%	28.60%
2021-05-31	37.44%	33.90%	33.90%
2021-06-30	42.50%	36.20%	36.20%
2021-07-31	47.72%	42.35%	42.35%
2021-08-31	52.95%	47.74%	47.74%
2021-09-30	58.01%	52.00%	52.00%
2021-10-31	63.24%	55.56%	55.56%
2021-11-30	68.30%	60.45%	60.45%
2021-12-31	73.52%	64.19%	64.19%
2022-01-31	78.75%	65.50%	65.50%
2022-02-28	83.47%	67.44%	67.44%
2022-03-31	88.70%	74.46%	74.46%
2022-04-30	93.76%	85.10%	75.30%
2022-05-31	98.99%	92.40%	79.23%
2022-06-30	104.05%	97.30%	83.70%
2022-07-31	109.27%	100.00%	85.70%
2022-08-31	114.50%	100.00%	96.26%
2022-09-30	119.56%	100.00%	98.00%

## PKG 2 Thahr Al Sarow Basic Boys - Jerash



## PKG 2 Thahr Al Sarow Basic Boys - Jerash

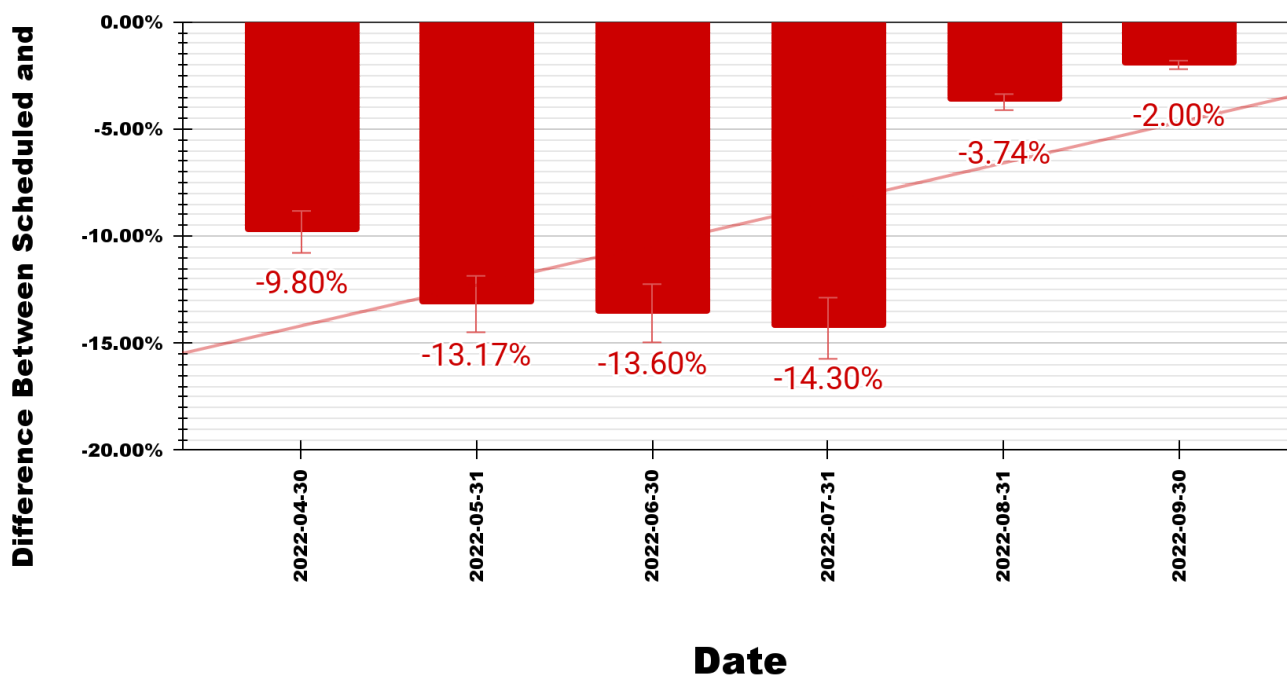
### Cumulative Progress



Date	Difference Between Scheduled and Actual
2022-04-30	<b>-9.80%</b>
2022-05-31	<b>-13.17%</b>
2022-06-30	<b>-13.60%</b>
2022-07-31	<b>-14.30%</b>
2022-08-31	<b>-3.74%</b>
2022-09-30	<b>-2.00%</b>

**PKG 2 Difference: Scheduled Vs. Actual**

**Thahr Al Sarow Basic Boys - Jerash**



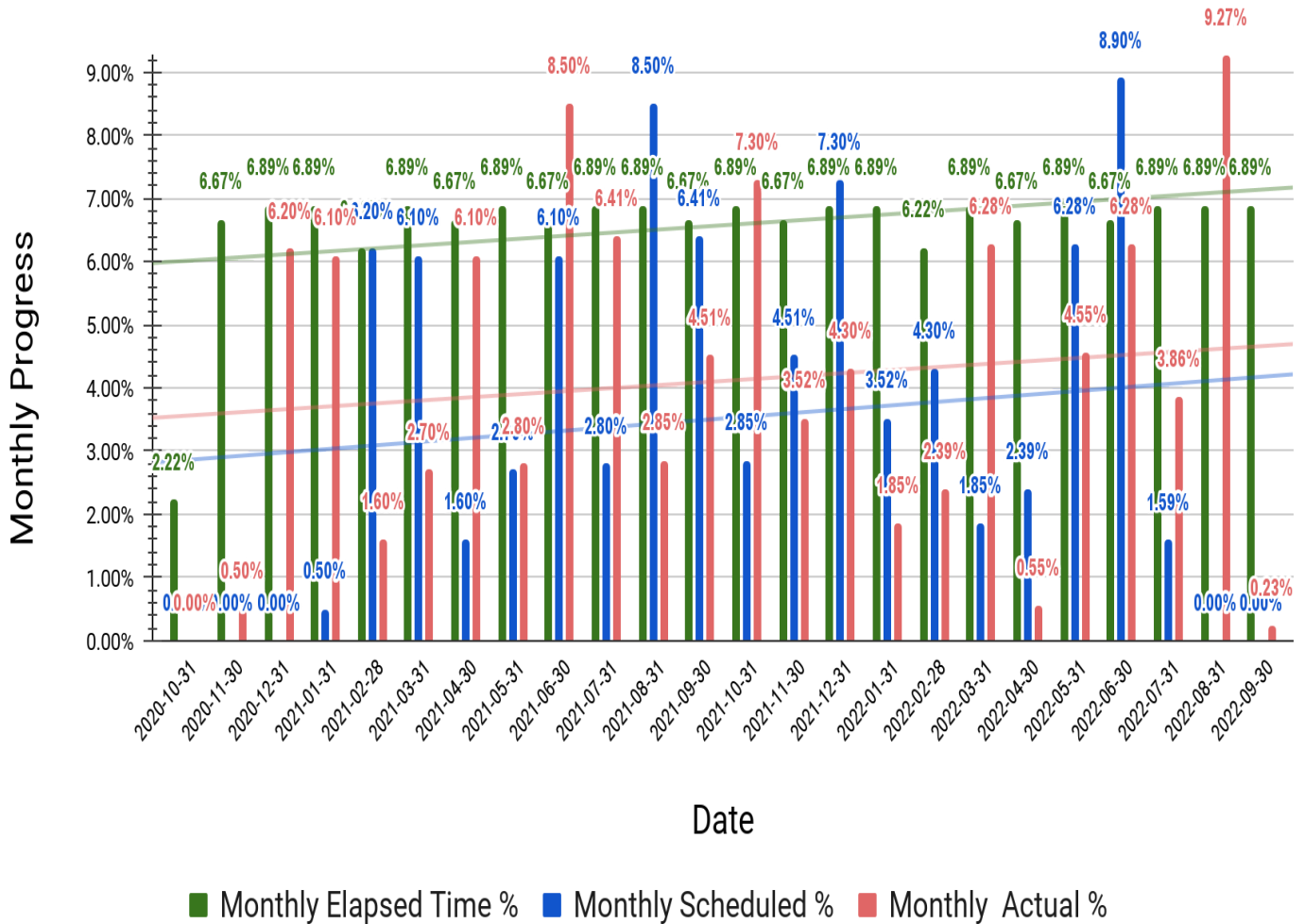


## 7.4 Jumana Bint Abi-Taleb Basic Mixed School- Amman

Jumana Bint Abi-Taleb Basic Mixed School- Amman Monthly Progress			
Date	Monthly Elapsed Time %	Monthly Scheduled %	Monthly Actual %
2020-10-31	2.22%	0.00%	0.00%
2020-11-30	6.67%	0.00%	0.50%
2020-12-31	6.89%	0.00%	6.20%
2021-01-31	6.89%	0.50%	6.10%
2021-02-28	6.22%	6.20%	1.60%
2021-03-31	6.89%	6.10%	2.70%
2021-04-30	6.67%	1.60%	6.10%
2021-05-31	6.89%	2.70%	2.80%
2021-06-30	6.67%	6.10%	8.50%
2021-07-31	6.89%	2.80%	6.41%
2021-08-31	6.89%	8.50%	2.85%
2021-09-30	6.67%	6.41%	4.51%
2021-10-31	6.89%	2.85%	7.30%
2021-11-30	6.67%	4.51%	3.52%
2021-12-31	6.89%	7.30%	4.30%
2022-01-31	6.89%	3.52%	1.85%
2022-02-28	6.22%	4.30%	2.39%
2022-03-31	6.89%	1.85%	6.28%
2022-04-30	6.67%	2.39%	0.55%
2022-05-31	6.89%	6.28%	4.55%
2022-06-30	6.67%	8.90%	6.28%
2022-07-31	6.89%	1.59%	3.86%
2022-08-31	6.89%	0.00%	9.27%
2022-09-30	6.89%	0.00%	0.23%
	<b>135.14%</b>	<b>84.40%</b>	<b>98.65%</b>

## PKG 2 Jumana Bint Abi Taleb Basic Mixed - Marka

### Monthly Progress

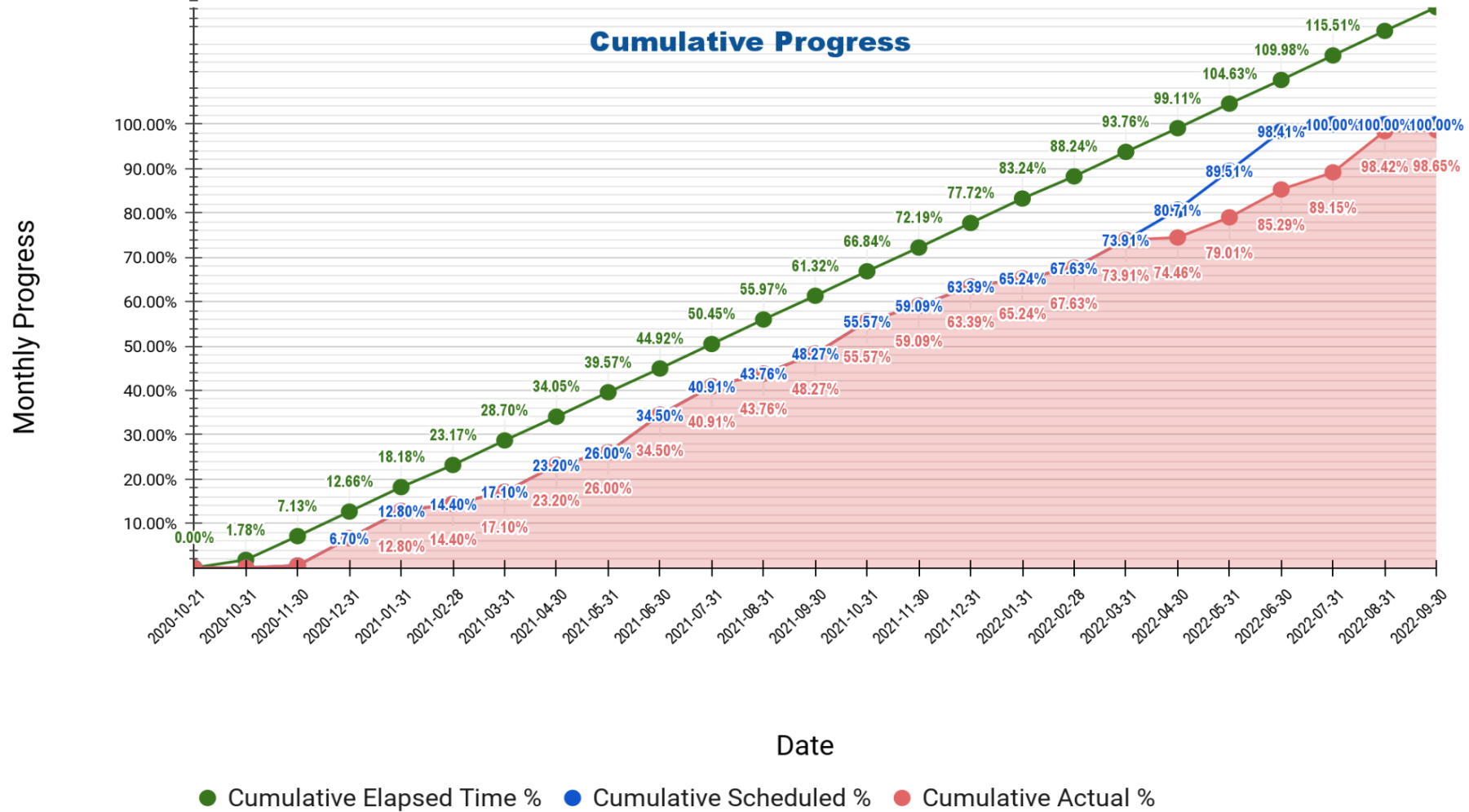


<b>Jumana Bint Abi-Taleb Basic Mixed School- Amman Cumulative Progress</b>			
<b>Date</b>	<b>Cumulative Elapsed Time %</b>	<b>Cumulative Scheduled %</b>	<b>Cumulative Actual %</b>
2020-10-21	0.00%	0.00%	0.00%
2020-10-31	1.78%	0.00%	0.00%
2020-11-30	7.13%	0.50%	0.50%
2020-12-31	12.66%	6.70%	6.70%
2021-01-31	18.18%	12.80%	12.80%
2021-02-28	23.17%	14.40%	14.40%
2021-03-31	28.70%	17.10%	17.10%
2021-04-30	34.05%	23.20%	23.20%
2021-05-31	39.57%	26.00%	26.00%
2021-06-30	44.92%	34.50%	34.50%
2021-07-31	50.45%	40.91%	40.91%
2021-08-31	55.97%	43.76%	43.76%
2021-09-30	61.32%	48.27%	48.27%
2021-10-31	66.84%	55.57%	55.57%
2021-11-30	72.19%	59.09%	59.09%
2021-12-31	77.72%	63.39%	63.39%
2022-01-31	83.24%	65.24%	65.24%
2022-02-28	88.24%	67.63%	67.63%
2022-03-31	93.76%	73.91%	73.91%
2022-04-30	99.11%	80.71%	74.46%
2022-05-31	104.63%	89.51%	79.01%
2022-06-30	109.98%	98.41%	85.29%
2022-07-31	115.51%	100.00%	89.15%
2022-08-31	121.03%	100.00%	98.42%
2022-09-30	126.38%	100.00%	98.65%

## PKG 2 Jumana Bint Abi Taleb Basic Mixed - Marka



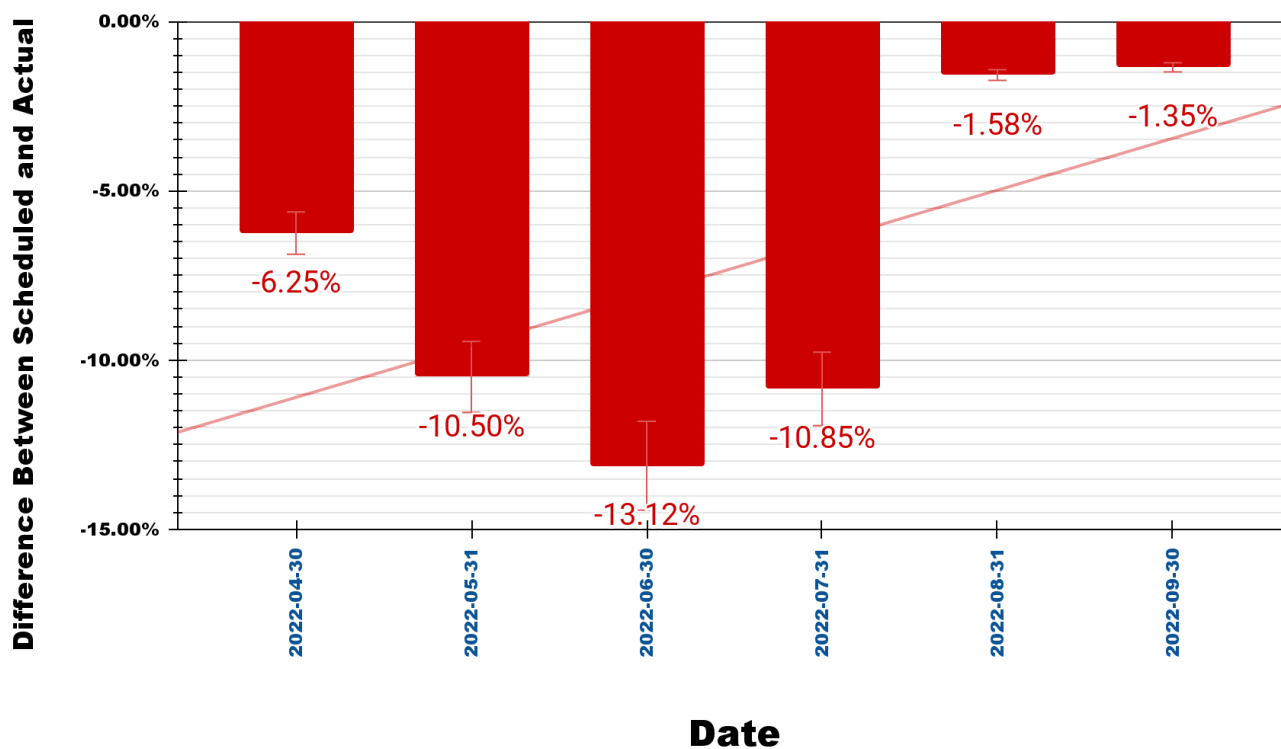
**PKG 2 Jumana Bint Abi Taleb Basic Mixed - Marka**



Date	Difference Between Scheduled and Actual
2022-04-30	<b>-6.25%</b>
2022-05-31	<b>-10.50%</b>
2022-06-30	<b>-13.12%</b>
2022-07-31	<b>-10.85%</b>
2022-08-31	<b>-1.58%</b>
2022-09-30	<b>-1.35%</b>

**PKG 2 Difference: Scheduled Vs. Actual**

**Jumana Bint Abi Taleb Basic Mixed - Marka**



## 7.5 Engineer comments on work progress

### A. Average for the three schools:

The cumulative progress -as average- for the three schools at the end of this month:

Date	Cumulative Elapsed Time %	Cumulative Scheduled %	Cumulative Actual %
2022-09-30	126.57%	100.00%	97.22%

The difference Between Scheduled and Actual is **-2.78%**

### B. Hay Al Iskan Basic Mixed School:

The cumulative progress -as average- for the three schools at the end of this month:

Date	Cumulative Elapsed Time %	Cumulative Scheduled %	Cumulative Actual %
2022-09-30	133.77%	100.00%	95.00%

The difference Between Scheduled and Actual is **-5.00%**

### C. Thahr Al Sarow Basic School for Boys:

The cumulative progress -as average- for the three schools at the end of this month:

Date	Cumulative Elapsed Time %	Cumulative Scheduled %	Cumulative Actual %
2022-09-30	119.56%	100.00%	98.00%

The difference Between Scheduled and Actual is **-2.00%**

---

**D. Jumana Bint Abi Taleb Basic Mixed School:**

The cumulative progress -as average- for the three schools at the end of this month:

Date	Cumulative Elapsed Time %	Cumulative Scheduled %	Cumulative Actual %
2022-09-30	126.38%	100.00%	98.65%

**The difference Between Scheduled and Actual is -1.35%**

In accordance with the above, the contractor will be drawn to override the delay at the end of this month, to approach the cumulative progress scheduled at the end of next month.



## 7.6 Tracking Tasks in CPM

### A- Hay Al Iskan Basic Mixed School - Jerash:

- [https://docs.google.com/spreadsheets/d/e/2PACX-1vR\\_I0IBfmAZ27r7tCm3ug\\_ZsqaWTdNC28SfXVi5xO1jnO66RAQBJ\\_mjBu48dA-RgOefnrruLaNtPnZn/pubhtml?gid=517196601&single=true](https://docs.google.com/spreadsheets/d/e/2PACX-1vR_I0IBfmAZ27r7tCm3ug_ZsqaWTdNC28SfXVi5xO1jnO66RAQBJ_mjBu48dA-RgOefnrruLaNtPnZn/pubhtml?gid=517196601&single=true)
- [https://docs.google.com/spreadsheets/d/e/2PACX-1vR\\_I0IBfmAZ27r7tCm3ug\\_ZsqaWTdNC28SfXVi5xO1jnO66RAQBJ\\_mjBu48dA-RgOefnrruLaNtPnZn/pubhtml?gid=435791778&single=true](https://docs.google.com/spreadsheets/d/e/2PACX-1vR_I0IBfmAZ27r7tCm3ug_ZsqaWTdNC28SfXVi5xO1jnO66RAQBJ_mjBu48dA-RgOefnrruLaNtPnZn/pubhtml?gid=435791778&single=true)

### B- Thahr Al Sarow Basic School for Boys - Jerash:

- [https://docs.google.com/spreadsheets/d/e/2PACX-1vR\\_I0IBfmAZ27r7tCm3ug\\_ZsqaWTdNC28SfXVi5xO1jnO66RAQBJ\\_mjBu48dA-RgOefnrruLaNtPnZn/pubhtml?gid=1364154284&single=true](https://docs.google.com/spreadsheets/d/e/2PACX-1vR_I0IBfmAZ27r7tCm3ug_ZsqaWTdNC28SfXVi5xO1jnO66RAQBJ_mjBu48dA-RgOefnrruLaNtPnZn/pubhtml?gid=1364154284&single=true)
- [https://docs.google.com/spreadsheets/d/e/2PACX-1vR\\_I0IBfmAZ27r7tCm3ug\\_ZsqaWTdNC28SfXVi5xO1jnO66RAQBJ\\_mjBu48dA-RgOefnrruLaNtPnZn/pubhtml?gid=1306769488&single=true](https://docs.google.com/spreadsheets/d/e/2PACX-1vR_I0IBfmAZ27r7tCm3ug_ZsqaWTdNC28SfXVi5xO1jnO66RAQBJ_mjBu48dA-RgOefnrruLaNtPnZn/pubhtml?gid=1306769488&single=true)

### C- Jumana Bint Abi Taleb Basic Mixed School - Amman:

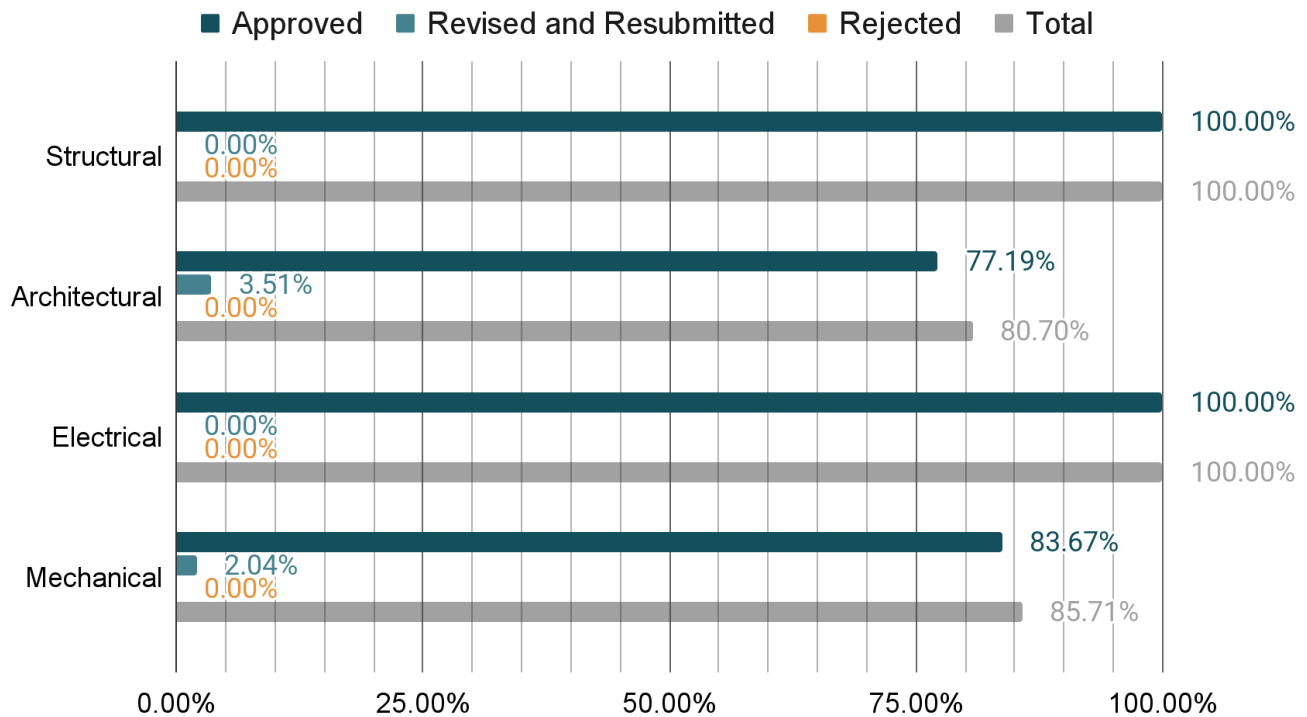
- [https://docs.google.com/spreadsheets/d/e/2PACX-1vR\\_I0IBfmAZ27r7tCm3ug\\_ZsqaWTdNC28SfXVi5xO1jnO66RAQBJ\\_mjBu48dA-RgOefnrruLaNtPnZn/pubhtml?gid=971892763&single=true](https://docs.google.com/spreadsheets/d/e/2PACX-1vR_I0IBfmAZ27r7tCm3ug_ZsqaWTdNC28SfXVi5xO1jnO66RAQBJ_mjBu48dA-RgOefnrruLaNtPnZn/pubhtml?gid=971892763&single=true)
- [https://docs.google.com/spreadsheets/d/e/2PACX-1vR\\_I0IBfmAZ27r7tCm3ug\\_ZsqaWTdNC28SfXVi5xO1jnO66RAQBJ\\_mjBu48dA-RgOefnrruLaNtPnZn/pubhtml?gid=1766247540&single=true](https://docs.google.com/spreadsheets/d/e/2PACX-1vR_I0IBfmAZ27r7tCm3ug_ZsqaWTdNC28SfXVi5xO1jnO66RAQBJ_mjBu48dA-RgOefnrruLaNtPnZn/pubhtml?gid=1766247540&single=true)

## 8 | Submitted Materials

### 8.1 Summary of Submitted Materials

PKG 2 Summary of Submitted Materials 2022-08-31				
Item	Total No. of Materials to be Submitted	Total No. of Submitted Materials	Submitted Materials (%)	Non Submitted Materials (%)
Structural	20	20	100.00%	0.00%
Architectural	57	46	80.70%	19.30%
Electrical	27	27	100.00%	0.00%
Mechanical	49	42	85.71%	14.29%
PKG 2 Summary of Submitted Materials (No.)				
Item	Approved	Revised and Resubmitted	Rejected	Total
Structural	20	0	0	20
Architectural	44	2	0	46
Electrical	27	0	0	27
Mechanical	41	1	0	42
PKG 2 Summary of Submitted Materials (%)				
Item	Approved	Revised and Resubmitted	Rejected	Total
Structural	100.00%	0.00%	0.00%	100.00%
Architectural	77.19%	3.51%	0.00%	80.70%
Electrical	100.00%	0.00%	0.00%	100.00%

### PKG 2 Summary of Submitted Materials



### 8.2 Shop Drawings & Submittal Tracking LOG

- [https://docs.google.com/spreadsheets/d/e/2PACX-1vQhUWXszmkbNjD5kaye-loHYgFLcR\\_RM7K3zrZiPMeoNhJ0CaSwhHSiOd40omDODF6w0CT6i2L3JcUT/pubhtml](https://docs.google.com/spreadsheets/d/e/2PACX-1vQhUWXszmkbNjD5kaye-loHYgFLcR_RM7K3zrZiPMeoNhJ0CaSwhHSiOd40omDODF6w0CT6i2L3JcUT/pubhtml)

### 8.3 Materials Submittal Vendor List

- [https://docs.google.com/spreadsheets/d/e/2PACX-1vROX\\_nYFxAjJuwgblxq2aEASgNTRLkE1YDkWmS9Hcuo5jrF1SEXayJtRuoHGwYv8RCzyxN-kDKiP6ah/pubhtml](https://docs.google.com/spreadsheets/d/e/2PACX-1vROX_nYFxAjJuwgblxq2aEASgNTRLkE1YDkWmS9Hcuo5jrF1SEXayJtRuoHGwYv8RCzyxN-kDKiP6ah/pubhtml)

## 9 | Correspondence Tracking Logs

- ❑ [https://docs.google.com/spreadsheets/d/e/2PACX-1vQILE0SThNzpE2TV-pS1MtIAj0mQRgVovkQvMPIn1904ZyLTjpCOkGAoJD5wvJLAlldcprSdGWzj\\_U/pubhtml](https://docs.google.com/spreadsheets/d/e/2PACX-1vQILE0SThNzpE2TV-pS1MtIAj0mQRgVovkQvMPIn1904ZyLTjpCOkGAoJD5wvJLAlldcprSdGWzj_U/pubhtml)

## 10 | Non-conformance Report Tracking Log

### 10.1 HSE

- ❑ <https://docs.google.com/spreadsheets/d/e/2PACX-1vRIR17ZlvFnhRSILBDp3Lam6rkXPrRcPifg9Xo8AcEuukgEhK6T7IRM0oWiXXOzzcg9FJ356k3205NU/pubhtml?gid=0&single=true>

### 10.2 QCs

#### Hay Al Iskan Basic Mixed School- Jerash

- ❑ [https://b9686515-2954-4919-832c-2c36b1d1850f.filesusr.com/ugd/c80178\\_1807f10908b047519122e3813f3c27cd.pdf](https://b9686515-2954-4919-832c-2c36b1d1850f.filesusr.com/ugd/c80178_1807f10908b047519122e3813f3c27cd.pdf)
- ❑ [https://b9686515-2954-4919-832c-2c36b1d1850f.filesusr.com/ugd/c80178\\_07c4698c05c04073b2e0938edbd5dcbf.pdf](https://b9686515-2954-4919-832c-2c36b1d1850f.filesusr.com/ugd/c80178_07c4698c05c04073b2e0938edbd5dcbf.pdf)
- ❑ [https://b9686515-2954-4919-832c-2c36b1d1850f.filesusr.com/ugd/c80178\\_06a4594cc4e04748a18575ddb2d8f82a.pdf](https://b9686515-2954-4919-832c-2c36b1d1850f.filesusr.com/ugd/c80178_06a4594cc4e04748a18575ddb2d8f82a.pdf)
- ❑ [https://b9686515-2954-4919-832c-2c36b1d1850f.filesusr.com/ugd/c80178\\_9eafd88075f7417288edb3817a3e4746.pdf](https://b9686515-2954-4919-832c-2c36b1d1850f.filesusr.com/ugd/c80178_9eafd88075f7417288edb3817a3e4746.pdf)
- ❑ [https://b9686515-2954-4919-832c-2c36b1d1850f.filesusr.com/ugd/c80178\\_8fcd35c7c6424910b328787b791d40bc.pdf](https://b9686515-2954-4919-832c-2c36b1d1850f.filesusr.com/ugd/c80178_8fcd35c7c6424910b328787b791d40bc.pdf)
- ❑ [https://b9686515-2954-4919-832c-2c36b1d1850f.filesusr.com/ugd/bed180\\_84a170750f4d4c398a0b60e66cce9dff.pdf](https://b9686515-2954-4919-832c-2c36b1d1850f.filesusr.com/ugd/bed180_84a170750f4d4c398a0b60e66cce9dff.pdf)

- ❑ [https://b9686515-2954-4919-832c-2c36b1d1850f.filesusr.com/ugd/bed180\\_10c3d6d0575b42c098496dcb0468e44b.pdf](https://b9686515-2954-4919-832c-2c36b1d1850f.filesusr.com/ugd/bed180_10c3d6d0575b42c098496dcb0468e44b.pdf)
- ❑ [https://b9686515-2954-4919-832c-2c36b1d1850f.filesusr.com/ugd/bed180\\_75f01267783a4dd0bee5139487faca25.pdf](https://b9686515-2954-4919-832c-2c36b1d1850f.filesusr.com/ugd/bed180_75f01267783a4dd0bee5139487faca25.pdf)
- ❑ [https://b9686515-2954-4919-832c-2c36b1d1850f.filesusr.com/ugd/bed180\\_4145bb3def724fb1ab1625b904abc8c8.pdf](https://b9686515-2954-4919-832c-2c36b1d1850f.filesusr.com/ugd/bed180_4145bb3def724fb1ab1625b904abc8c8.pdf)
- ❑ [https://b9686515-2954-4919-832c-2c36b1d1850f.filesusr.com/ugd/bed180\\_992295331ab948a384befa72eb3363c2.pdf](https://b9686515-2954-4919-832c-2c36b1d1850f.filesusr.com/ugd/bed180_992295331ab948a384befa72eb3363c2.pdf)
- ❑ [https://b9686515-2954-4919-832c-2c36b1d1850f.filesusr.com/ugd/bed180\\_f7f96f7c7c2a42ff998f590a9f98272e.pdf](https://b9686515-2954-4919-832c-2c36b1d1850f.filesusr.com/ugd/bed180_f7f96f7c7c2a42ff998f590a9f98272e.pdf)
- ❑ [https://b9686515-2954-4919-832c-2c36b1d1850f.filesusr.com/ugd/bed180\\_8d68944236ea439da61786fbc02748ef.pdf](https://b9686515-2954-4919-832c-2c36b1d1850f.filesusr.com/ugd/bed180_8d68944236ea439da61786fbc02748ef.pdf)
- ❑ [https://b9686515-2954-4919-832c-2c36b1d1850f.filesusr.com/ugd/bed180\\_ef4930e8e7ca4a5da309a1a1a65af45a.pdf](https://b9686515-2954-4919-832c-2c36b1d1850f.filesusr.com/ugd/bed180_ef4930e8e7ca4a5da309a1a1a65af45a.pdf)
- ❑ [https://b9686515-2954-4919-832c-2c36b1d1850f.filesusr.com/ugd/bed180\\_cd26a9c332274d64a8ba6b5210c67ec3.pdf](https://b9686515-2954-4919-832c-2c36b1d1850f.filesusr.com/ugd/bed180_cd26a9c332274d64a8ba6b5210c67ec3.pdf)
- ❑ [https://b9686515-2954-4919-832c-2c36b1d1850f.filesusr.com/ugd/bed180\\_6802132cc24c4291874500fa95139d08.pdf](https://b9686515-2954-4919-832c-2c36b1d1850f.filesusr.com/ugd/bed180_6802132cc24c4291874500fa95139d08.pdf)
- ❑ [https://www.medanat.site/\\_files/ugd/c80178\\_e1902f3ca0dd482eb991fdc6031e0ea0.pdf](https://www.medanat.site/_files/ugd/c80178_e1902f3ca0dd482eb991fdc6031e0ea0.pdf)
- ❑ [https://www.medanat.site/\\_files/ugd/c80178\\_cbd0b36eda7e4ff2aae0ad41d086119e.pdf](https://www.medanat.site/_files/ugd/c80178_cbd0b36eda7e4ff2aae0ad41d086119e.pdf)
- ❑ [https://www.medanat.site/\\_files/ugd/c80178\\_2e92b92adb3a4f879b29e8e3bf61e25e.pdf](https://www.medanat.site/_files/ugd/c80178_2e92b92adb3a4f879b29e8e3bf61e25e.pdf)
- ❑ [https://www.medanat.site/\\_files/ugd/c80178\\_62c4329de26b4ec5b55d36a5353eb776.pdf](https://www.medanat.site/_files/ugd/c80178_62c4329de26b4ec5b55d36a5353eb776.pdf)
- ❑ [https://www.medanat.site/\\_files/ugd/c80178\\_6c5cacf844f446bd860148b0bb11e7cc.pdf](https://www.medanat.site/_files/ugd/c80178_6c5cacf844f446bd860148b0bb11e7cc.pdf)
- ❑ [https://www.medanat.site/\\_files/ugd/c80178\\_b739dfb585dd428a909e1d136ef24f9a.pdf](https://www.medanat.site/_files/ugd/c80178_b739dfb585dd428a909e1d136ef24f9a.pdf)
- ❑ [https://www.medanat.site/\\_files/ugd/c80178\\_a16f79c945c14033a5ede8fd43e24ee7.pdf](https://www.medanat.site/_files/ugd/c80178_a16f79c945c14033a5ede8fd43e24ee7.pdf)

## Thahr Al Sarow Basic School for Boys- Jerash

- ❑ [https://b9686515-2954-4919-832c-2c36b1d1850f.fi/lesusr.com/ugd/c80178\\_8421931f3724460ca09965cf4d6d9115.pdf](https://b9686515-2954-4919-832c-2c36b1d1850f.fi/lesusr.com/ugd/c80178_8421931f3724460ca09965cf4d6d9115.pdf)
- ❑ [https://b9686515-2954-4919-832c-2c36b1d1850f.fi/lesusr.com/ugd/bed180\\_4e39aa4d5be1410d87be252ead3e9e98.pdf](https://b9686515-2954-4919-832c-2c36b1d1850f.fi/lesusr.com/ugd/bed180_4e39aa4d5be1410d87be252ead3e9e98.pdf)
- ❑ [https://b9686515-2954-4919-832c-2c36b1d1850f.fi/lesusr.com/ugd/bed180\\_2aeeb4363fa14289a2483f4713c719b2.pdf](https://b9686515-2954-4919-832c-2c36b1d1850f.fi/lesusr.com/ugd/bed180_2aeeb4363fa14289a2483f4713c719b2.pdf)
- ❑ [https://b9686515-2954-4919-832c-2c36b1d1850f.fi/lesusr.com/ugd/bed180\\_797572bf286e43c3b29067146b4d27bd.pdf](https://b9686515-2954-4919-832c-2c36b1d1850f.fi/lesusr.com/ugd/bed180_797572bf286e43c3b29067146b4d27bd.pdf)
- ❑ [https://b9686515-2954-4919-832c-2c36b1d1850f.fi/lesusr.com/ugd/bed180\\_86c8e0590f484c3aae4881a8d17ba048.pdf](https://b9686515-2954-4919-832c-2c36b1d1850f.fi/lesusr.com/ugd/bed180_86c8e0590f484c3aae4881a8d17ba048.pdf)
- ❑ [https://b9686515-2954-4919-832c-2c36b1d1850f.fi/lesusr.com/ugd/bed180\\_883418b6e70e44d1893f55928ef4aa6c.pdf](https://b9686515-2954-4919-832c-2c36b1d1850f.fi/lesusr.com/ugd/bed180_883418b6e70e44d1893f55928ef4aa6c.pdf)
- ❑ [https://b9686515-2954-4919-832c-2c36b1d1850f.fi/lesusr.com/ugd/bed180\\_d76a7c0c0a5e498999dc37d3f947324a.pdf](https://b9686515-2954-4919-832c-2c36b1d1850f.fi/lesusr.com/ugd/bed180_d76a7c0c0a5e498999dc37d3f947324a.pdf)
- ❑ [https://b9686515-2954-4919-832c-2c36b1d1850f.fi/lesusr.com/ugd/bed180\\_6213700664314c848f190d23b90a053d.pdf](https://b9686515-2954-4919-832c-2c36b1d1850f.fi/lesusr.com/ugd/bed180_6213700664314c848f190d23b90a053d.pdf)
- ❑ [https://b9686515-2954-4919-832c-2c36b1d1850f.fi/lesusr.com/ugd/bed180\\_e4f72fb3b6ea453c8fedc063f0bb745b.pdf](https://b9686515-2954-4919-832c-2c36b1d1850f.fi/lesusr.com/ugd/bed180_e4f72fb3b6ea453c8fedc063f0bb745b.pdf)
- ❑ [https://b9686515-2954-4919-832c-2c36b1d1850f.fi/lesusr.com/ugd/bed180\\_80e3957ae3244930864704d7b7c9e18e.pdf](https://b9686515-2954-4919-832c-2c36b1d1850f.fi/lesusr.com/ugd/bed180_80e3957ae3244930864704d7b7c9e18e.pdf)
- ❑ [https://www.medanat.site/\\_files/ugd/c80178\\_2d86ea85ac464f6485b97d9fa1bdac9b.pdf](https://www.medanat.site/_files/ugd/c80178_2d86ea85ac464f6485b97d9fa1bdac9b.pdf)
- ❑ [https://www.medanat.site/\\_files/ugd/c80178\\_ab5658ccac2b453b873fec1462d16169.pdf](https://www.medanat.site/_files/ugd/c80178_ab5658ccac2b453b873fec1462d16169.pdf)
- ❑ [https://www.medanat.site/\\_files/ugd/c80178\\_74f0bcd20f3a497da2da2c8d62b02faa.pdf](https://www.medanat.site/_files/ugd/c80178_74f0bcd20f3a497da2da2c8d62b02faa.pdf)
- ❑ [https://www.medanat.site/\\_files/ugd/c80178\\_04853161a41649e7afec83cab38d874a.pdf](https://www.medanat.site/_files/ugd/c80178_04853161a41649e7afec83cab38d874a.pdf)
- ❑ [https://www.medanat.site/\\_files/ugd/c80178\\_36166d3dad9b4e7b8dfdf94b7caaeabce.pdf](https://www.medanat.site/_files/ugd/c80178_36166d3dad9b4e7b8dfdf94b7caaeabce.pdf)

- ❑ [https://www.medanat.site/files/ugd/c80178\\_23a569b2430d492f90ea3d99b5b035ea.pdf](https://www.medanat.site/files/ugd/c80178_23a569b2430d492f90ea3d99b5b035ea.pdf)
- ❑ [https://www.medanat.site/files/ugd/c80178\\_4d1dd6d3466e4aa9aa31ca6bdfb3fde1.pdf](https://www.medanat.site/files/ugd/c80178_4d1dd6d3466e4aa9aa31ca6bdfb3fde1.pdf)

## Jumana Bint Abi Taleb Basic Mixed School- Amman

- ❑ [https://b9686515-2954-4919-832c-2c36b1d1850f.filesusr.com/ugd/c80178\\_bb8c0e1f43ee4391b5f5129428f6ab57.pdf](https://b9686515-2954-4919-832c-2c36b1d1850f.filesusr.com/ugd/c80178_bb8c0e1f43ee4391b5f5129428f6ab57.pdf)
- ❑ [https://b9686515-2954-4919-832c-2c36b1d1850f.filesusr.com/ugd/c80178\\_6c89b62dfc12458e8bc2b6ff36d7567f.pdf](https://b9686515-2954-4919-832c-2c36b1d1850f.filesusr.com/ugd/c80178_6c89b62dfc12458e8bc2b6ff36d7567f.pdf)
- ❑ [https://b9686515-2954-4919-832c-2c36b1d1850f.filesusr.com/ugd/c80178\\_2af7ede34fa242658247977cfd8eed00.pdf](https://b9686515-2954-4919-832c-2c36b1d1850f.filesusr.com/ugd/c80178_2af7ede34fa242658247977cfd8eed00.pdf)
- ❑ [https://b9686515-2954-4919-832c-2c36b1d1850f.filesusr.com/ugd/bed180\\_92ff895cf7d7414fa2aff0238a5963d3.pdf](https://b9686515-2954-4919-832c-2c36b1d1850f.filesusr.com/ugd/bed180_92ff895cf7d7414fa2aff0238a5963d3.pdf)
- ❑ [https://b9686515-2954-4919-832c-2c36b1d1850f.filesusr.com/ugd/bed180\\_df37b3f79bf54db9974d7ccc15d1f9af.pdf](https://b9686515-2954-4919-832c-2c36b1d1850f.filesusr.com/ugd/bed180_df37b3f79bf54db9974d7ccc15d1f9af.pdf)
- ❑ [https://b9686515-2954-4919-832c-2c36b1d1850f.filesusr.com/ugd/bed180\\_042e78e150a24197bd405173b6ac349d.pdf](https://b9686515-2954-4919-832c-2c36b1d1850f.filesusr.com/ugd/bed180_042e78e150a24197bd405173b6ac349d.pdf)
- ❑ [https://b9686515-2954-4919-832c-2c36b1d1850f.filesusr.com/ugd/bed180\\_af4ea1e6894b40cb82d707a495f0287a.pdf](https://b9686515-2954-4919-832c-2c36b1d1850f.filesusr.com/ugd/bed180_af4ea1e6894b40cb82d707a495f0287a.pdf)
- ❑ [https://b9686515-2954-4919-832c-2c36b1d1850f.filesusr.com/ugd/bed180\\_9b69075d60f141f9aafe71cf9d40d6f1.pdf](https://b9686515-2954-4919-832c-2c36b1d1850f.filesusr.com/ugd/bed180_9b69075d60f141f9aafe71cf9d40d6f1.pdf)
- ❑ [https://b9686515-2954-4919-832c-2c36b1d1850f.filesusr.com/ugd/bed180\\_2b493e79a29a4acf9122e114121213bf.pdf](https://b9686515-2954-4919-832c-2c36b1d1850f.filesusr.com/ugd/bed180_2b493e79a29a4acf9122e114121213bf.pdf)
- ❑ [https://b9686515-2954-4919-832c-2c36b1d1850f.filesusr.com/ugd/bed180\\_792ad7f893294ee2b12e1608867ea29a.pdf](https://b9686515-2954-4919-832c-2c36b1d1850f.filesusr.com/ugd/bed180_792ad7f893294ee2b12e1608867ea29a.pdf)
- ❑ [https://b9686515-2954-4919-832c-2c36b1d1850f.filesusr.com/ugd/bed180\\_a544b9450245479d91a46d67711865d9.pdf](https://b9686515-2954-4919-832c-2c36b1d1850f.filesusr.com/ugd/bed180_a544b9450245479d91a46d67711865d9.pdf)

- ❑ [https://b9686515-2954-4919-832c-2c36b1d1850f.filesusr.com/ugd/bed180\\_e93e845ee2f9471caec921ae49f087ca.pdf](https://b9686515-2954-4919-832c-2c36b1d1850f.filesusr.com/ugd/bed180_e93e845ee2f9471caec921ae49f087ca.pdf)
- ❑ [https://b9686515-2954-4919-832c-2c36b1d1850f.filesusr.com/ugd/bed180\\_059a9df132974b66af0448f590219555.pdf](https://b9686515-2954-4919-832c-2c36b1d1850f.filesusr.com/ugd/bed180_059a9df132974b66af0448f590219555.pdf)
- ❑ [https://www.medanat.site/\\_files/ugd/c80178\\_e2c9350837564ee79724c446e341ed0d.pdf](https://www.medanat.site/_files/ugd/c80178_e2c9350837564ee79724c446e341ed0d.pdf)
- ❑ [https://www.medanat.site/\\_files/ugd/c80178\\_5978945b2837486a9ad307e3812bc6ad.pdf](https://www.medanat.site/_files/ugd/c80178_5978945b2837486a9ad307e3812bc6ad.pdf)
- ❑ [https://www.medanat.site/\\_files/ugd/c80178\\_cbc9115ccc7a4c9e93f229a44b0d7990.pdf](https://www.medanat.site/_files/ugd/c80178_cbc9115ccc7a4c9e93f229a44b0d7990.pdf)
- ❑ [https://www.medanat.site/\\_files/ugd/c80178\\_69f876661c764c9984a117ac66e585b3.pdf](https://www.medanat.site/_files/ugd/c80178_69f876661c764c9984a117ac66e585b3.pdf)
- ❑ [https://www.medanat.site/\\_files/ugd/c80178\\_3b8e297d518649d6b1bc51b5c4670209.pdf](https://www.medanat.site/_files/ugd/c80178_3b8e297d518649d6b1bc51b5c4670209.pdf)
- ❑ [https://www.medanat.site/\\_files/ugd/c80178\\_d280db99b173400ab396808b20f065d8.pdf](https://www.medanat.site/_files/ugd/c80178_d280db99b173400ab396808b20f065d8.pdf)
- ❑ [https://www.medanat.site/\\_files/ugd/c80178\\_1270f31b3ba34aab95e71e375d1c09a0.pdf](https://www.medanat.site/_files/ugd/c80178_1270f31b3ba34aab95e71e375d1c09a0.pdf)

### 10.3 NCRs

- ❑ [https://docs.google.com/spreadsheets/d/e/2PACX-1vRCdhdyMg2w7aub85wSr2x5zVoAH\\_N-j5dXUIHAXnV2u\\_W\\_I6\\_KaM6lopck70ENfSGgppujJEQwkY8/pubhtml?gid=1457468755&single=true](https://docs.google.com/spreadsheets/d/e/2PACX-1vRCdhdyMg2w7aub85wSr2x5zVoAH_N-j5dXUIHAXnV2u_W_I6_KaM6lopck70ENfSGgppujJEQwkY8/pubhtml?gid=1457468755&single=true)
- ❑ [https://docs.google.com/spreadsheets/d/e/2PACX-1vRCdhdyMg2w7aub85wSr2x5zVoAH\\_N-j5dXUIHAXnV2u\\_W\\_I6\\_KaM6lopck70ENfSGgppujJEQwkY8/pubhtml?gid=1351232002&single=true](https://docs.google.com/spreadsheets/d/e/2PACX-1vRCdhdyMg2w7aub85wSr2x5zVoAH_N-j5dXUIHAXnV2u_W_I6_KaM6lopck70ENfSGgppujJEQwkY8/pubhtml?gid=1351232002&single=true)
- ❑ [https://docs.google.com/spreadsheets/d/e/2PACX-1vRCdhdyMg2w7aub85wSr2x5zVoAH\\_N-j5dXUIHAXnV2u\\_W\\_I6\\_KaM6lopck70ENfSGgppujJEQwkY8/pubhtml?gid=131850383&single=true](https://docs.google.com/spreadsheets/d/e/2PACX-1vRCdhdyMg2w7aub85wSr2x5zVoAH_N-j5dXUIHAXnV2u_W_I6_KaM6lopck70ENfSGgppujJEQwkY8/pubhtml?gid=131850383&single=true)



## 11 | Request For Information Tracking Logs

### 11.1 RFIs-Designer

- ❑ <https://docs.google.com/spreadsheets/d/e/2PACX-1vQkOoy0ORVxNi9xloEojG7rrW4EQDq4W9iajib3XwhhKcTeaZWD5q3DYAUVNDiJFy083mdeDLt80Ybs/pubhtml?gid=0&single=true>

### 11.2 RFIs-Contractor

- ❑ <https://docs.google.com/spreadsheets/d/e/2PACX-1vQdgyzVJaildffX0ICaTWY19msLXGy-AWXjSUDNQdl4L4rXLocrZR5Zax2xb52mGDjujAUi-DOCGiv/pubhtml?gid=0&single=true>

## 12 | Site problems and Solutions

### 12.1 Hay Al Iskan Basic Mixed School-Jerash

The Designer provided a modified site plan including the new location of the water tank, a letter was sent to MPWH in this regard and they provided us with their approval. The Contractor is addressed concerning this issue.

A meeting was held in the Jerash Governor office in order to discuss the applicability of reducing the planned deduction from 5m to 3m, the said meeting was in the presence of the representatives of Directorate of Education/Jerash, Directorate of public Works & Housing/Jerash, Greater Jerash Municipality, Medanat office and Dijlah.

Upon the said meeting, MPWH sent a letter to MOL asking to provide them with the details and section of the subject street in order to address the Designer in this regard.

At the same time, the Directorate of Education/Jerash sent a letter to Greater Jerash Municipality for the same purpose.

A Greater Jerash Municipality surveyor provided us with the levels of the land where the regulatory street is planned to be executed, and the designer was contacted in this regard.

MOLA issued a letter to the Prime Ministry to announce the approval of Greater Jerash Municipality to deduct 3m along the construction site, in one of the local newspapers on 01/09/2021, the objection duration is 14 days.

The announcement was published in the official newspaper of the Prime Ministry in addition to Al Dostour and Sada Al Sha'ab local newspapers, the objection duration is 14 days.

No objection was recorded, and the Jerash Governorate issued a letter to MoLA requesting them to proceed with the District Committee decision in this regard.

The decision was taken by MoLA- the Supreme Organizing Council- and they addressed the Prime Ministry in order to publish the related announcement in the Official Newspaper – planned to be on 1/12/21.

The final regulatory plan is provided by Greater Jerash Municipality, which is already sent to the Employer, simultaneously USAID was contacted in order to address the Designer for the redesign of the site plan. The Designer provided a new proposed site plan which is under checking by the Engineer. Some comments were added by the Greater Jerash Municipality Surveyor, which were sent to the Designer and the drawings were prepared accordingly. A letter was sent to MPWH in this regard and we received their approval on the said drawings. The Contractor is instructed to proceed with the related works accordingly. We addressed the Employer in this regard and they approved the said drawings in writing. The Contractor is instructed to work accordingly and he is proceeding with work.

## **SOLVED**

### **12.2 Thahr Al Sarow Basic School for Boys-Jerash**

- 1- The new coordinates of the plot limit were inspected by the Greater Jerash Municipality representative and accordingly were handed over to the Contractor.
- 2- The Bus stop skeleton is removed by the said Municipality representative.

---

3- A written declaration is provided by “Al Masar Contracting company” confirming that no data cables are passing through the newly added area where the conflict existed.

4- An inspection was done by the Water authority/Jerash and it is expected that a cancelled water pipeline exists within the said area. Accordingly, the Contractor was requested to execute some pits before starting the excavations.

5- The Contractor started relocating the installed safety fence.

The Contractor and Medanat team followed the procedures of the relocation of the electrical poles and they were removed outside the site. **SOLVED**

### **12.3 Jumana Bint Abi Taleb Basic Mixed School- Amman**

The Contractor executed an adjacent wall to the existing one since the existing wall is considered as a shoring system for the existing planter and trees of the neighbour, and based on MPWH representatives’ verbal instructions during the conducted visit on 10/12/2021, a letter was sent to MPWH including the additional concrete quantities resulting of this work and due to technical issues.

MPWH approved the additional quantities.

**SOLVED**

## 13 | Meetings and Site Visits

### 13.1 Coordination & Progress Meetings

Coordination & Progress Meetings				
No.	Date	Location	Parties	Agenda
1	To be announced	To be announced	<ul style="list-style-type: none"> <li>● MPWH</li> <li>● USAID</li> <li>● Trigon</li> <li>● Wahib Medanat</li> <li>● Dijlah Est. Const. Contr.</li> </ul>	<p><b>September Monthly Progress Meeting:</b></p> <ul style="list-style-type: none"> <li>● Health, Safety and Environment.</li> <li>● Site borders, boundary walls/ Obstacles.</li> <li>● Progress review in general.</li> <li>● Construction Schedule and Update- using the construction schedule, review and projection/ the Contractor.</li> <li>● Quality Control.</li> <li>● Status of submittals.</li> </ul>

## 13.2 Site Visits

Site Visits				
No.	Date	Location	Parties	Agenda
1	21/09/2022	Jumana Bint Abi Taleb Basic Mixed School- Amman	<ul style="list-style-type: none"> <li>● MoE.</li> <li>● USAID.</li> <li>● Trigon.</li> <li>● Wahib Medanat</li> <li>● Dijlah Const. Contracting.</li> </ul>	<ul style="list-style-type: none"> <li>● Checking the readiness of the school to host students during next week.</li> </ul>
2	28/09/2022	Hay Al Iskan Basic Mixed School- Jerash	<ul style="list-style-type: none"> <li>● MoE.</li> <li>● USAID.</li> <li>● Trigon.</li> <li>● Wahib Medanat</li> <li>● Dijlah Const. Contracting.</li> </ul>	<ul style="list-style-type: none"> <li>● Checking the readiness of the school to host students during next week.</li> </ul>
3	28/09/2022	Thahr Al Sarow Basic School for Boys- Jerash	<ul style="list-style-type: none"> <li>● MoE.</li> <li>● USAID.</li> <li>● Trigon.</li> <li>● Wahib Medanat</li> <li>● Dijlah Const. Contracting.</li> </ul>	<ul style="list-style-type: none"> <li>● Checking the readiness of the school to host students during next week.</li> </ul>

**USAID Visit, September 21, 2022– Jumana Bint Abi Taleb Basic Mixed School- Amman**  
(Refer to 13.2 Site Visits Table)



Project ID  
Sign on Site

No	Name	Firm/Agency
1	Dr. Issam Omar	USAID
2	Dr. Ibraheem Mahfuth	USAID
4	Mrs. Anji Haddad	USAID
5	Dr. Issam Nusairat	USAID
6	Mrs. Ra'eda Al-Mumani	MoE Representative-School Principal
7	Eng. Peter Lister	CMTO
8	Eng. Areej	CMTO
9	Eng. Suhair Amarin	Medanat Office
10	Eng. Natheer Amarin	Medanat Office
11	Eng. Hasan Shaqboua	Medanat Office
12	Eng. Sawsan Al-Yousef	Medanat Office
13	Eng. Yousef Omar	Medanat Office
14	Eng. Omar Nasrallah	Medanat Office
15	Mr. Muhannad Abuirshaid	Dijlah Const. Contracting.
16	Eng. Amer Abdulghani	Dijlah Const. Contracting.





External works



The delivered furniture





Vocational lab's tools



Works at labs

**USAID Visit, September 28, 2022– Hay Al Iskan Basic Mixed School- Jerash**

(Refer to 13.2 Site Visits Table)



Project ID  
Sign on Site

No	Name	Firm/Agency
1	Dr. Issam Omar	USAID
2	Mrs. Dima Salahi	USAID
3	Mrs. Anji Haddad	USAID
4	Mrs. Serah	USAID
5	Dr. Ibraheem Mahfuth	USAID
6	Dr. Issam Nusairat	USAID
7	Eng. Peter Lister	CMTO
8	Eng. Areej	CMTO
9	Eng. Suhair Amarin	Medanat Office
10	Eng. Natheer Amarin	Medanat Office
11	Eng. Sawsan Al-Yousef	Medanat Office
12	Eng. Musa Abdulhadi	Medanat Office
13	Eng. Omar Nasrallah	Medanat Office
14	Eng. Ammar Gharaibeh	Medanat Site Engineer
15	Mr. Muhannad Abuirshaid	Dijlah Const. Contracting.
16	Eng. Amer Abdulghani	Dijlah Const. Contracting.
17	Eng. Salma	Dijlah Const. Contracting.
18	Mrs. Nisreen	UNOPS



External works



Corridors



The related parties





**USAID Visit, September 28, 2022– Thahr Al Sarow Basic School for Boys- Jerash**  
(Refer to 13.2 Site Visits Table)



Project ID  
Sign on Site

No	Name	Firm/Agency
1	Dr. Issam Omar	USAID
2	Mrs. Dima Salahi	USAID
3	Mrs. Anji Haddad	USAID
4	Mrs. Serah	USAID
5	Dr. Ibraheem Mahfuth	USAID
6	Dr. Issam Nusairat	USAID
7	Mrs. Amal hawamdeh	MoE Representative-School Principal
8	Eng. Peter Lister	CMTO
9	Eng. Areej	CMTO
10	Eng. Suhair Amarin	Medanat Office
11	Eng. Natheer Amarin	Medanat Office
12	Eng. Sawsan Al-Yousef	Medanat Office
13	Eng. Musa Abdulhadi	Medanat Office
14	Eng. Omar Nasrallah	Medanat Office
15	Eng. Mahmoud Abu Shqair	Medanat Site Engineer
16	Mr. Muhannad Abuirshaid	Dijlah Const. Contracting.
17	Eng. Amer Abdulghani	Dijlah Const. Contracting.
18	Eng. Mua'ed Abu Rshaid	Dijlah Const. Contracting.
19	Mrs. Nisreen	Unops



Classrooms



Tools of the vocational lab





Corridors



Installed furniture

### 13.3 Regular Monthly Site Visits (Home Office Support)

Regular Monthly Site Visits (Home Office Support)				
1	18/09/2022	Hay Al Iskan Basic Mixed School- Jerash	Engineer Rep.	<ul style="list-style-type: none"> <li>• The supervision team inspected the blockwork at the shafts on the roof.</li> <li>• The team inspected the plastering work at the roof.</li> <li>• The team inspected the pointing work for the stone at the elevation of the building.</li> <li>• The team inspected the cement tiling works for the sidewalks behind the school building.</li> <li>• The team observed that the Contractor is conducting the levelling work for the base course layer at the parking area.</li> </ul>

**Home Office Support, September 18, 2022- Hay Al Iskan Basic Mixed School- Jerash**

(Refer to 13.3 Site Visits Table)



SKEP III Home Office Support Site Visit Report

WAHIB  
MEDANAT  
consultant engineers

Consultant	Wahib Medanat Consultant Engineer	Rep No.	21-18092022
Contractor	Dijlah Establishment Constr. Contracting	Tender No.	(11/2019/USAID/SKEP/3/S) Schools for a Knowledge Economy Project (SKEP) - Phase (3) Package (1, 2)
Site Name	Hay Al Iskan Basic Mixed School- Jerash	Day/ Date	Sun. 18/09/2022
Duration of Project	450 Calendar Days	Total Project Budget	8,314,983.735 JD

No.	Visitors	Remarks
1	Suhair Amarin	- Project Dir./Head of Architectural Department
2	Hashem Abu Kwalk	- Senior Civil Engineer
3	Akram Khammes	- Head of Electrical Department
4	Marwan Sonna'a	- Head of Mechanical Department
5	Hasan Shaqboua	- Quality Control Manager

Visit Notes

No.	Description
1	The supervision team inspected the blockwork at the shafts on the roof.
2	The team inspected the plastering work at the roof.
3	The team inspected the pointing work for the stone at the elevation of the building.
4	The team inspected the cement tiling works for the sidewalks behind the school building.
5	The team observed that the Contractor is conducting the leveling work for the base course layer at the parking area.

## 14 | Manpower Logs

### 14.1 Hay Al Iskan Basic Mixed School – Jerash Progress

### 14.2 Thahr Al Sarow Basic School for Boys-Jerash

### 14.3 Jumana Bint Abi Taleb Basic Mixed School- Amman

- ❑ Manpower Link
- ❑ [https://docs.google.com/spreadsheets/d/e/2PACX-1vTsiH30Qv2T4h80t0lowCuOHx1EKQ7kSE\\_gpJGQ8u9w-22AXwbsillJyHGp8dK9z8o7\\_AB2mUUI9p96/pubhtml](https://docs.google.com/spreadsheets/d/e/2PACX-1vTsiH30Qv2T4h80t0lowCuOHx1EKQ7kSE_gpJGQ8u9w-22AXwbsillJyHGp8dK9z8o7_AB2mUUI9p96/pubhtml)

## 15 | Daily Plant and Equipment

### 15.1 Hay Al Iskan Basic Mixed School – Jerash Progress

### 15.2 Thahr Al-Sarow Basic School for Boys- Jerash

### 15.3 Jumana Bint Abi-Taleb Basic Mixed School- Amman

- ❑ Daily Plant and Equipment Link
- ❑ [https://docs.google.com/spreadsheets/d/e/2PACX-1vRm\\_HjfQpbtjdqmCgUaXWD4jt2VGTXi0na4b9wqjBM0Q-qTONmyKCE31r4Dh0KBxmKEbVXZPUMJ4nrK/pubhtml](https://docs.google.com/spreadsheets/d/e/2PACX-1vRm_HjfQpbtjdqmCgUaXWD4jt2VGTXi0na4b9wqjBM0Q-qTONmyKCE31r4Dh0KBxmKEbVXZPUMJ4nrK/pubhtml)

## 16 | Lab-test Results Tracking Log

### 16.1 Hay Al Iskan Basic Mixed School – Jerash

### 16.2 Thahr Al-Sarow Basic School for Boys- Jerash

### 16.3 Jumana Bint Abi-Taleb Basic Mixed School- Amman

- [https://docs.google.com/spreadsheets/d/e/2PACX-1vRppiQSvaNuhGXud95M7p1wldGX1UIBnYHOht84ffOA9IRxaWR\\_oL5gBEt7n0E6V5GfnGJq8szMmvVh/pubhtml](https://docs.google.com/spreadsheets/d/e/2PACX-1vRppiQSvaNuhGXud95M7p1wldGX1UIBnYHOht84ffOA9IRxaWR_oL5gBEt7n0E6V5GfnGJq8szMmvVh/pubhtml)

### 16.4 Comments on Laboratory Testing

The laboratory testing for various materials continued and the involved laboratories are the approved laboratory “International Centre for Geotechnical Studies” and the “Royal Scientific Society” laboratories.

The testing was conducted on concrete samples, tiling, stones, plastering accessories and MEP materials.

Most of the materials passed the requirements of specifications. In the cases where the material did not pass, the Contractor was requested to replace the representative quantity of the said material and re-testing was then conducted on the new material

## 17 | Obstacles Log (Site Obstacles)

- [https://docs.google.com/spreadsheets/d/e/2PACX-1vQsC3aop3cPNcXpZVx0xwfE\\_lmQs6HbcQIFMMioCbhaKojTYIY21ZeJl0TJ2VmcQ7DCEPNOg8DqXy-1/pubhtml?gid=603369061&single=true](https://docs.google.com/spreadsheets/d/e/2PACX-1vQsC3aop3cPNcXpZVx0xwfE_lmQs6HbcQIFMMioCbhaKojTYIY21ZeJl0TJ2VmcQ7DCEPNOg8DqXy-1/pubhtml?gid=603369061&single=true)



## 17.1 Hay Al Iskan Basic Mixed School - Jerash

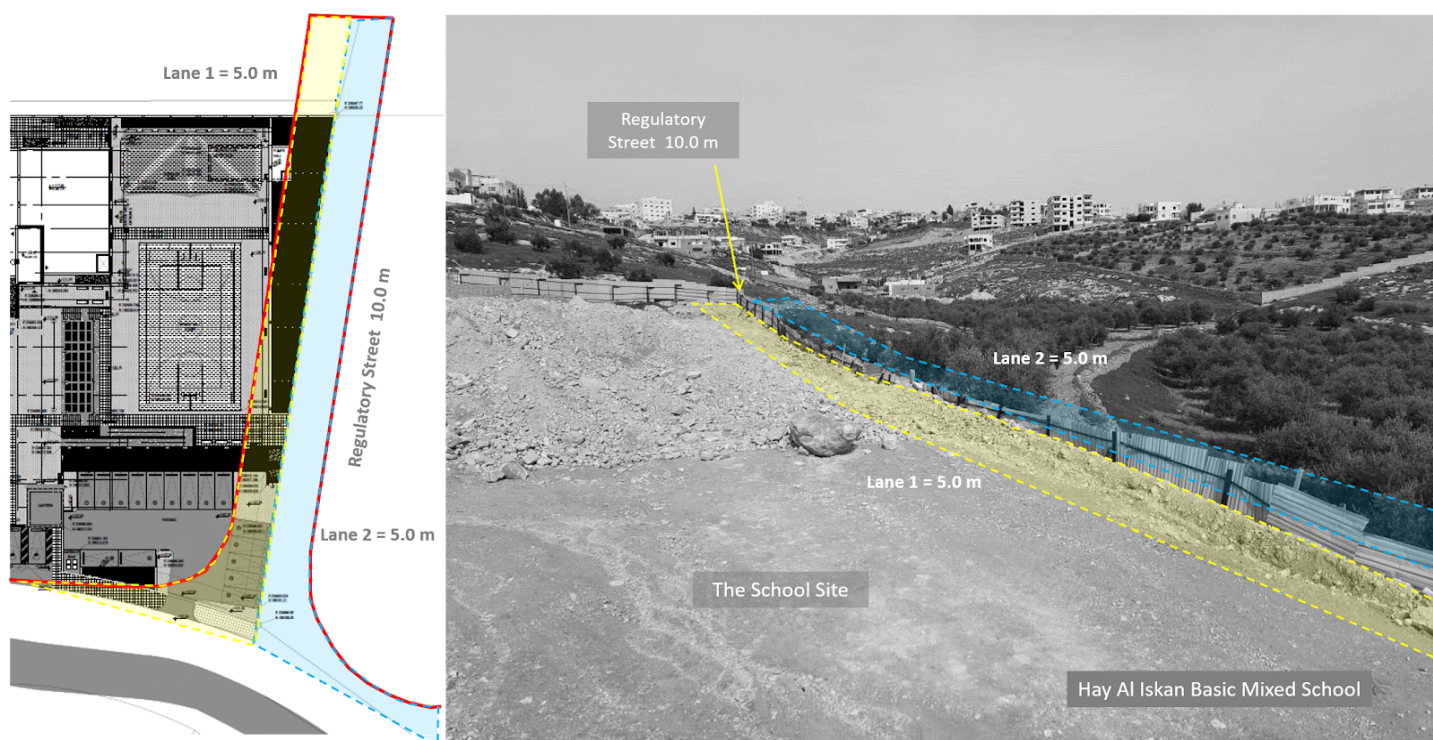


Figure 1. A regulatory (10.0 m) street is planned to be executed by deduction 5.0 m along the south western side, the other 5.0 m will be deducted from the neighbour's land.

# SOLVED

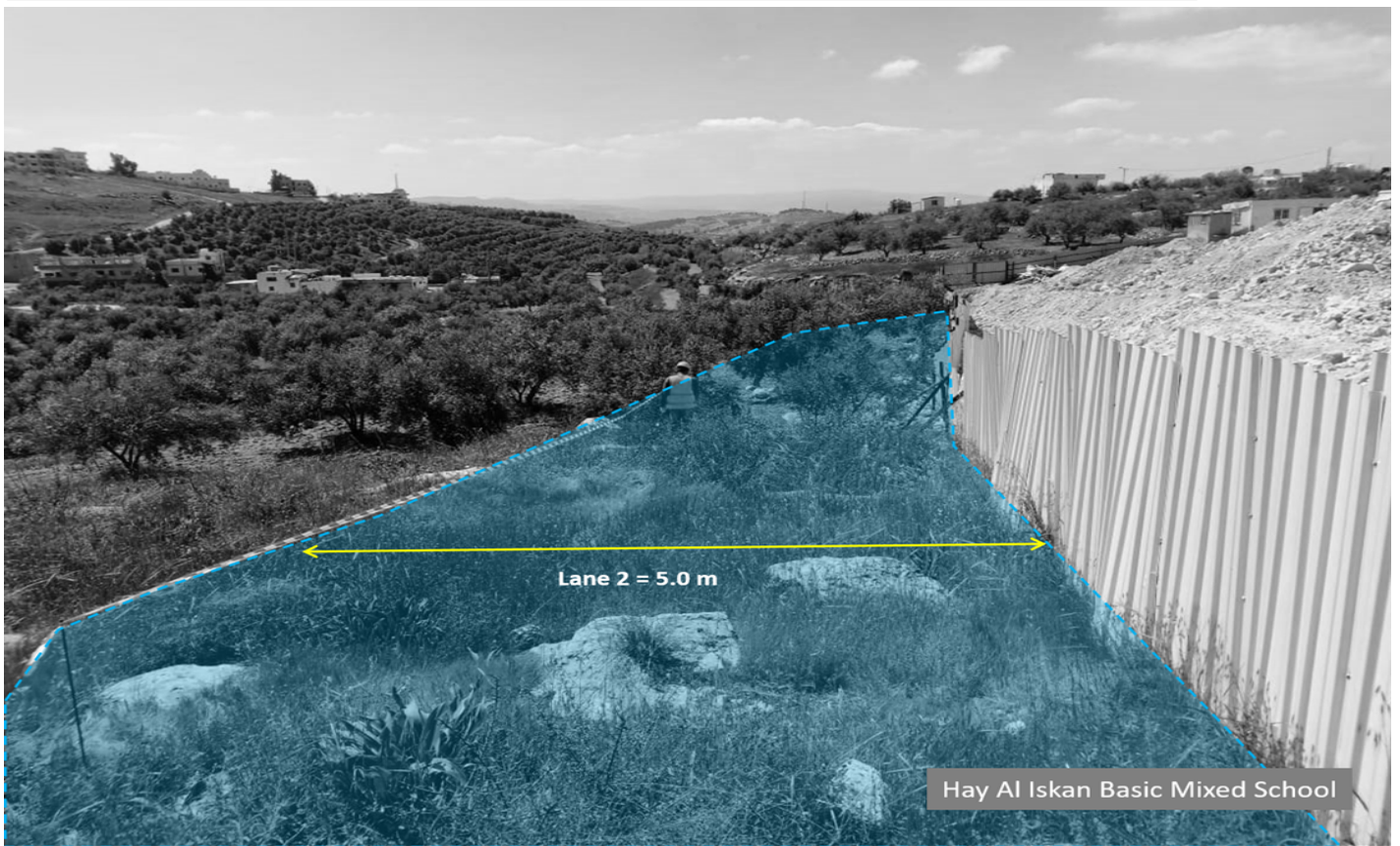


Figure 2. The 5.0 m encroachment on the neighbour's land

**SOLVED**

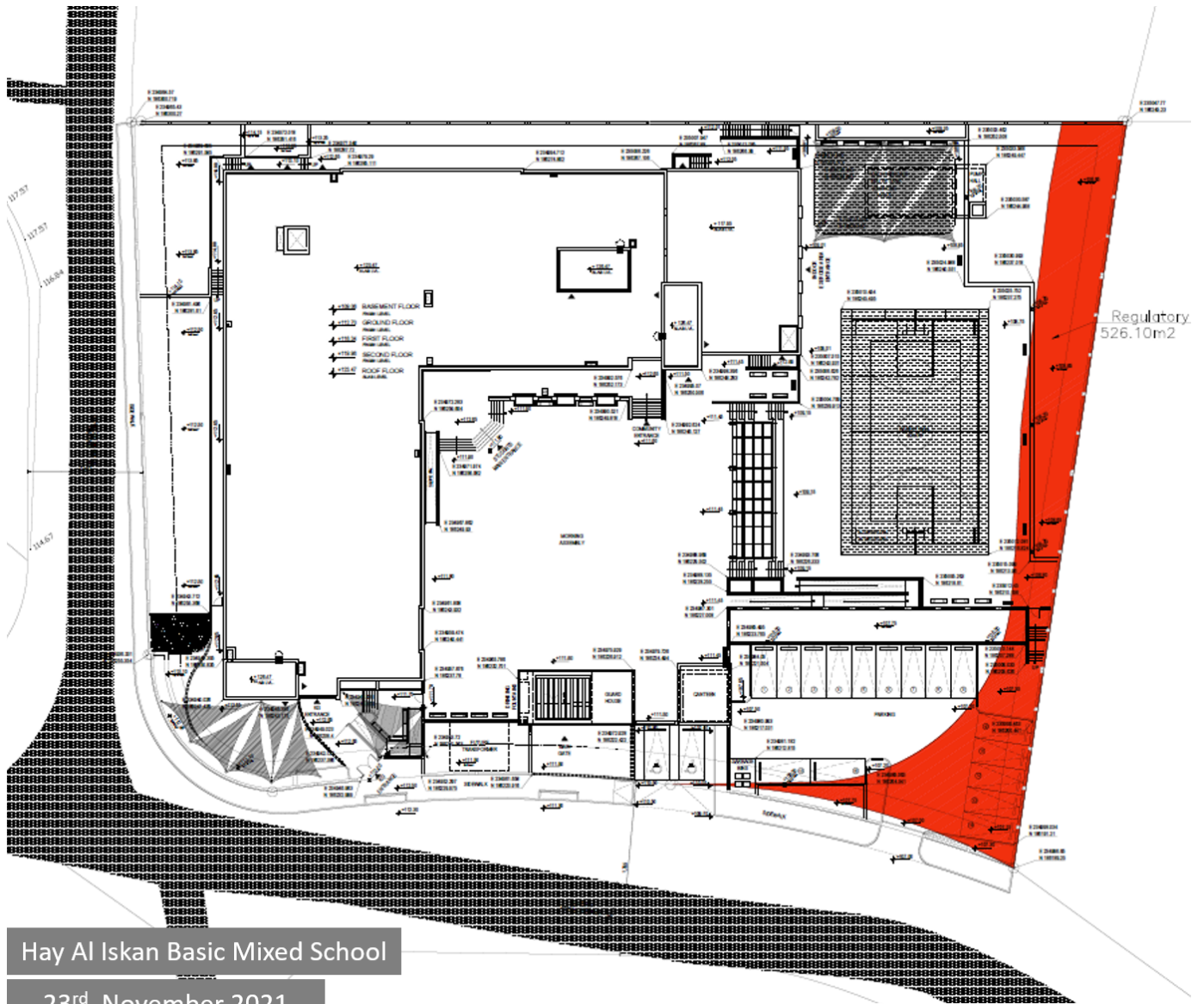


Figure 3. The final regulatory plan is provided by Greater Jerash Municipality

**SOLVED**



## 17.2 Thahr Al Sarow Basic School for Boys – Jerash SOLVED



Figure 3. Existing street encroaching on the site boundary

# SOLVED

## 18 | Weather Condition

### 18.1 Hay Al Iskan Basic Mixed School – Jerash

- ❑ [https://docs.google.com/spreadsheets/d/e/2PACX-1vRPDU6JfSzheqRafnzdf\\_fSx36GC6Asqio24uTpg3AXK41WRtn84140VP-XkU7w9GI0kjctKHAA4eME/pubhtml?gid=0&single=true](https://docs.google.com/spreadsheets/d/e/2PACX-1vRPDU6JfSzheqRafnzdf_fSx36GC6Asqio24uTpg3AXK41WRtn84140VP-XkU7w9GI0kjctKHAA4eME/pubhtml?gid=0&single=true)

### 18.2 Thahr Al-Sarow Basic School for Boys- Jerash

- ❑ [https://docs.google.com/spreadsheets/d/e/2PACX-1vRPDU6JfSzheqRafnzdf\\_fSx36GC6Asqio24uTpg3AXK41WRtn84140VP-XkU7w9GI0kjctKHAA4eME/pubhtml?gid=295583832&single=true](https://docs.google.com/spreadsheets/d/e/2PACX-1vRPDU6JfSzheqRafnzdf_fSx36GC6Asqio24uTpg3AXK41WRtn84140VP-XkU7w9GI0kjctKHAA4eME/pubhtml?gid=295583832&single=true)

### 18.3 Jumana Bint Abi-Taleb Basic Mixed School- Amman

- ❑ [https://docs.google.com/spreadsheets/d/e/2PACX-1vRPDU6JfSzheqRafnzdf\\_fSx36GC6Asqio24uTpg3AXK41WRtn84140VP-XkU7w9GI0kjctKHAA4eME/pubhtml?gid=1174180114&single=true](https://docs.google.com/spreadsheets/d/e/2PACX-1vRPDU6JfSzheqRafnzdf_fSx36GC6Asqio24uTpg3AXK41WRtn84140VP-XkU7w9GI0kjctKHAA4eME/pubhtml?gid=1174180114&single=true)

## 19 | Selected Photos

### 19.1 Hay Al Iskan Basic Mixed School- Jerash



External works  
at the  
playground and  
the parking  
area

01/09/2022



Works at the  
multi-purpose  
hall

10/09/2022





Installing tensile shadings at the KG entrance

20/09/2022



Finishing the Hera Design works at the multi-purpose hall

29/09/2022



Painting work  
for the  
playground

29/09/2022

---

## 19.2 Thahr Al Sarow Basic School for Boys- Jerash

**Taking Over is Under Process**

---

### 19.3 Jumana Bint Abi Taleb Basic Mixed School - Amman

**Taking Over is Under Process**

---

## 20 | Location Links

**20.1 [Hay Al Iskan Basic Mixed School – Jerash](#)**

**20.2 [Thahr Al-Sarow Basic School for Boys - Jerash](#)**

**20.3 [Jumana Bint Abi-Taleb Basic Mixed School - Amman](#)**

## 21 | Website Reports Links

**21.1 [Daily Reports](#)**

**21.2 [Weekly Reports](#)**

**21.3 [Monthly Reports](#)**

**21.4 [CMTO Inspection Reports](#)**

**21.5 [Quality Reports](#)**



## 22 | Training

### 22.1 Training:

SKEPIII Site staff training sessions

We conduct one effective training session per week for both our staff and the contractor staff including fresh graduates. The training is conducted by our senior engineers from various disciplines and backgrounds. Our future plan for staff training is to host external trainers from the Ministry of Local Administration to talk about Municipalities regulations.



---

## 22.2 Training Sessions:

For More Details:

- Training Link:
- <https://www.medanat.site/training>