



**USAID**  
FROM THE AMERICAN PEOPLE



## Schools for Knowledge Economy Project (SKEP III)

Funded by the United States Agency for International Development

### Phase III/ Package (2)

10/2019/USAID/SKEP/3/2

- Thahr Al-Sarow Basic School for Boys– Jerash
- Jumana Bint Abi Taleb Basic Mixed School– Amman
- Hay Al-Iskan Basic Mixed School– Jerash


## Monthly Progress Report

No. (2)

November. 2020



**WAHIB  
MEDANAT**  
consultant engineers

 + 962 6 5821206  
+ 962 6 5817847  
+ 962 79 7650576

 + 962 6 5862357

 925497 Amman 11190 Jordan

 mail@medanat.com  
info@medanat.com

 www.medanat.com



# **Monthly Progress Supervision Report**

November 2020

We propose our Monthly Meeting for SKEP III/PK2 to be on Monday. 07/12/2020.

## List of Abbreviations

<b>MOE</b>	Ministry of Education
<b>MPWH</b>	Ministry of Public Works & Housing
<b>USAID</b>	United States Agency for International Development
<b>SKEP</b>	Schools for Knowledge Economy Project
<b>JEA</b>	Jordan Engineers Association

# Table of Contents

<b>1</b>	List of Abbreviations	3
<b>2</b>	Table of Contents	4
<b>3</b>	Project Particulars	6
<b>4</b>	Supervision Staff Members	8
<b>5</b>	Executive Summary	9
<b>6</b>	Summary of Activities	10
<b>7</b>	Meetings and Site Visits Logs.	11
<b>8</b>	Correspondence Logs.	12
<b>9</b>	Submittals Logs.	12
<b>10</b>	Lab-Test Results Log.	13
<b>11</b>	Demolition Reports Log.	14
<b>12</b>	Grid 3x3 Inspection Report	14
<b>13</b>	Progress Table	15
<b>14</b>	Selected Photos	16
<b>15</b>	Annexes	26
<b>15.1</b>	Annex 1: Site Resources Logs.	27
	▪ 1.1: Daily Plant – Equipment Log & Charts	29
	▪ 1.2: Daily Manpower Log & Charts	32
	▪ 1.3: Percentage of Completion (Progress Charts)	36
	▪ 1.4: Log of Activities (Completed & In-Progress)	47
	▪ 1.5: Cash-Flow Charts	49
<b>15.2</b>	Annex 2: Correspondence Logs.	52
	▪ 2.1: Incoming Letters	53

	▪ 2.2: Outgoing Letters	58
<b>15.3</b>	Annex 3: Submittals Logs.	60
	▪ 3.1 Architectural Submittals	61
	▪ 3.1.1: Arch. Shop Drawings	
	▪ 3.1.2: Arch. Materials Submittal	62
	▪ 3.2 Electrical Submittals	63
	▪ 3.2.1: Elect. Shop Drawings	64
	▪ 3.2.2: Elect. Materials Submittal	65
	▪ 3.3: Mechanical Submittals	66
	▪ Mech. Shop Drawings	67
	▪ Mech. Materials Submittal	68
	▪ 3.4 Civil Submittals	69
	▪ Civil Shop Drawings	70
	▪ Civil Materials Submittal	74
<b>15.4</b>	Annex 4: Site Visit Reports & Meetings	75
	▪ 4.1: Meetings	
	▪ 4.2: Site Visits	76
<b>15.5</b>	Annex 5: RFI Tracking Log.	80
	▪ 5.1: Designer	81
	▪ 5.2: Contractor	82
<b>15.6</b>	Annex 6: Lab-Tests Tracking Log	83
<b>15.7</b>	Annex 7: Mobilization Tracking Log	96
<b>15.8</b>	Annex 8: Non-Conformance Reports Tracking Log	99
<b>15.9</b>	Annex 9: Materials Submittals	101
	List of Tables & Figures	118
	▪ Tables	118
	▪ Figures	119

## Project Particulars

<b>Contract Name:</b>	School for Knowledge Economy Project (SKEP) Phase III – Package (2)
<b>Owner:</b>	Ministry of Education (MOE)
<b>Employer:</b>	Ministry of Public Works & Housing (MPWH)
<b>Funded By:</b>	United States Agency for International Development (USAID)
<b>Consultant:</b>	Wahib Medanat Consultant Engineers
<b>Project Management:</b>	Trigon Associates (CMTO)
<b>Contractor:</b>	Dijlah Establishment Constr. Contracting
<b>Contract No.:</b>	10/2019/USAID/SKEP/3/2
<b>Commencement Date:</b>	21/10/2020
<b>Time for Substantial Completion of the Work:</b>	Thahr Al-Sarow Basic School for Boys- Jerash: <b>450 Days</b> Jumana Bint Abi-Taleb Basic Mixed School- Amman: <b>450 Days</b> Hay Al Iskan Basic Mixed School – Jerash : <b>450 Days</b>
<b>Time to Complete the Work Including Punch List Items:</b>	Within 14 Calendar days for each School from the date of taking over committee inspection
<b>Contract Amount at Award:</b>	8,314,983.735 JOD
<b>Amount of Liquidated Damages:</b>	Thahr Al Sarow Basic School for Boys- Jerash: 2000 JOD/ Day but not to exceed 15% of total amount for the School Jumana Bint Abi Taleb Basic Mixed School- Amman: 200 JOD/ Day but not to exceed 15% of total amount for the School Hay Al Iskan Basic Mixed School- Jerash: 2000 JOD/ Day but not to exceed 15% of the total amount for the School
<b>Defects Liability Period:</b>	(730) Calendar Days for all Civil & Electromechanical works from the date of Substantial Completion for each school including the maintenance of plantation works
<b>Maintenance Guarantee for Defects Liability Period:</b>	5% of the final Contract Sum

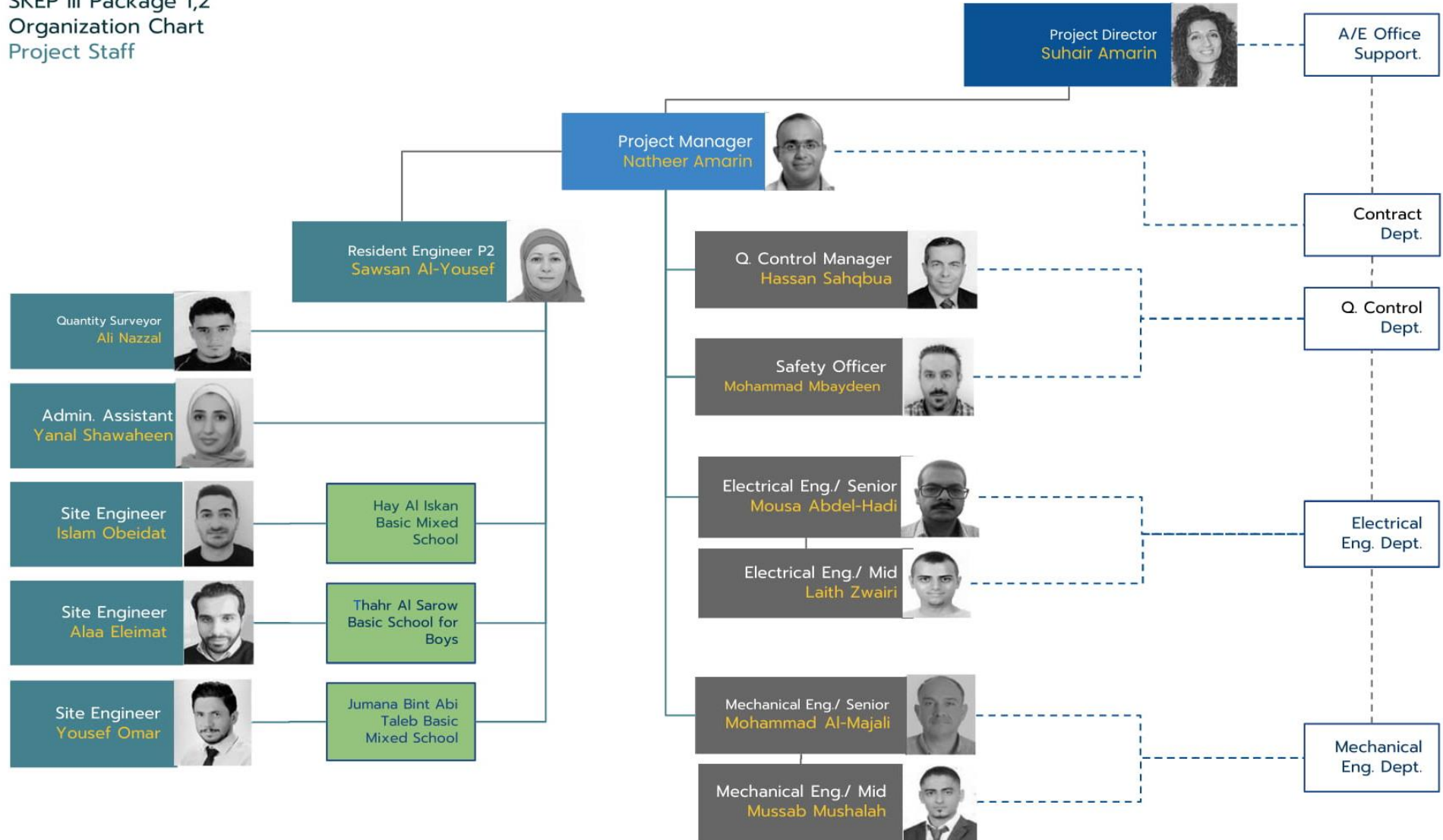
<b>Percentage of Retention from Interim Payment Certificate:</b>	10% of each payment
<b>Limit of Retention Money:</b>	5% of Contract Sum as amended
<b>Period of Time for Payment to be made after Certification by the Engineer:</b>	60 Calendar Days
<b>Minimum Amount of Interim Payment Certificate:</b>	JOD 300,000 (Three hundred thousand Jordanian Dinar) for all schools under the Package
<b>Payment for Imported Materials</b>	40% upon receipt of approved bill of lading and another 20% when stored on site to the Engineer's approval
<b>Payment for Local Materials and Equipment</b>	60% and restricted to cement and reinforcing steel when stored on site to the Engineer's approval.



SKEP III Package 1,2  
Organization Chart  
Project Staff

Project Staff

Office support





## Executive Summary

The Ministry of Education represented by the Ministry of Public Works & Housing has received a grant from USAID to finance the construction of:

### School for Knowledge Economy Project (SKEP) – Phase III – Package (2)

The package consists of construction of three (3) Schools at different locations, two schools in Jerash and one School in Amman.

The project consists of construction of new classrooms, computer labs, laboratories, public utilities...etc., and site works for group of schools as shown in the Tender Documents, the Schools are:

- Thahr Al-Sarow Basic School for Boys – Jerash  
The project consists of five floors building, with a total approximate area of 4615 m<sup>2</sup> in addition to site works as deemed in the drawings and BOQ.
- Jumana Bint Abi Taleb Basic Mixed School – Amman  
The project consists of five floors building, with total approximate are of 5460 m<sup>2</sup> in addition to site works a deemed in the drawings and BOQ.
- Hay Al-Iskan Basic School Mixed School – Jerash  
The project consists of five floors building, with total approximate area of 5420 m<sup>2</sup> in addition to site works as deemed in the drawings and BOQ.

Hereunder is a table showing the main progress information about the project:

No.	Object	Information
1.	Time Elapsed	<b>41</b> Days out of 450 = <b>9.11</b> % Since the Commencement Date of the Contractor is on <b>21<sup>st</sup> October 2020</b> .
2.	Contract Value (JOD)	<b>8,314,983.735 JOD</b>
3.	Payments	10 % - First Part of Mobilization Payment = <b>831,498.3735 JOD</b>
4.	Mobilization %	<b>98</b> %
5.	Construction %	<b>3.95</b> % (average for 3 schools)
6.	Guarantees	10 % Performance Guarantee= <b>831,498.3735 JOD</b>

(Table 1. Main Progress Information)

# Summary of Activities

## **Thahr Al Sarow Basic School for Boys- Jerash**

The executed works in this school in November 2020 are continuation in Excavation Works, Completion of Excavation Works is expected.

The expected works in December consists of Blinding Concrete & Steel Reinforcement, Reinforced Concrete for Foundations.

## **Jumana Bint Abi Taleb Basic Mixed School- Amman**

The executed works in this school in November 2020 are Excavation Works, Completion of Excavation Works is expected.

The expected works in December is Blinding Concrete for Foundations.

## **Hay Al Iskan Basic Mixed School- Jerash**

The executed works in this school in November 2020 are continuation in Excavation Works, Completion of Excavation Works is expected.

The expected works in December consists of Blinding Concrete & Steel Reinforcement, Reinforced Concrete for Foundations.

# Meetings and Site Visits Logs

## Coordination and Progress Meetings

Coordination & Progress Meetings				
No.	Date	Location	Parties	Agenda

(Table 2. Coordination & Progress Meetings)

## Site Visits

Site Visits				
No.	Date	Location	Parties	Agenda
1	23/11/2020	Jumana Bint Abi Taleb Basic Mixed School- Amman	Engineer Rep.	General inspection/Checking Mobilization Status
2	28/11/2020	Hai Al Iskan Basic Mixed School- Jerash	Engineer Rep.	Inspecting existing cavity/Excavation sides/ Mobilization
3	28/11/2020	Thahr AL Sarow Basic School for Boys- Jerash	Engineer Rep.	Inspecting ground nature/Mobilization/Excavation Sides

(Table 3. Site Visits)

# Correspondences Log

Official Letters		
Number of Incoming Letters	Number of Outgoing Letters	Notes
<b>53</b>	<b>65</b>	

(Table 4. Official Letters)

# Submittals Logs

## Shop Drawing Log

Shop-Drawings								
Submittal	Arch.		Civil		Electrical		Mechanical	
	No.	%	No.	%	No	%	No.	%
Total	-	-	38	100%	1	100%	1	100%
Submitted	-	-	38	100%	1	100%	1	100%
Approved	-	-	3	7.8%	-	-	-	-
Approved as Noted	-	-	3	7.8%	-	-	-	-
Resubmit	-	-	9	23.6%	1	100%	-	-
Reject	-	-	22	57.8%	-	-	1	100%
Under Revision	-	-	1	2.6%	-	-	-	-
Remaining	-	-	-	-	-	-	-	-

(Table 5. Submittals Log- Shop Drawings)

## Materials Log

Material Submittals								
Submittal	Arch.		Civil		Electrical		Mechanical	
	No.	%	No.	%	No	%	No.	%
Total	4	100%	25	100%	8	100%	8	100%
Submitted this Month	4	100%	9	36%	2	25%	2	25%
Approved	0	-	8	32%	-	-	-	-
Approved as Noted	1	25%	-	-	-	-	-	-
Resubmit	1	25%	-	-	1	12.5%	2	25%
Reject	1	25%	1	25%	1	12.5%	-	-
Under Revision	1	25%	-	-	-	-	-	-
Remaining	-		-	-	-	-	-	-

(Table 6. Submittals Log- Material Submittals)

## Lab-Tests Results Log

Lab-Test Reports			
Number of Reports	School Name	Test Results %	
		Pass	Fail
3	Thahr Al Sarow Basic School Boys- Jerash	75%	25%
0	Jumana Bint Abi Taleb Basic Mixed School- Amman	-	-
1	Hay Al Iskan Basic Mixed School- Jerash	100%	-

(Table 7. Lab-Tests Results Log)

## Demolition Reports Log

Demolition Log			
No.	School Name	Location	Demolition Works Status
1	Thahr Al Sarow Basic School for Boys	Jerash	No Demolition Works is needed in this site
2	Jumana Bint Abi Taleb Basic Mixed School	Amman	Demolition Work has not started yet.
3	Hay Al Iskan Basic Mixed School	Jerash	No Demolition Works is needed in this site

(Table 8. Demolition Log)

## Grid 3X3 Inspection Report

Grid Inspection Report					
No.	Contractor	School Name	Inspected	Status	Date of Approval
1	Dijlah Est. Contr. Const.	Thahr Al Sarow Basic School for Boys –Jerash	Yes	Approved	11/10/2020
2		Jumana Bint Abi Taleb Basic Mixed School - Amman	Yes	Approved	11/10/2020
3		Hay Al Iskan Basic Mixed School - Jerash	Yes	Approved	11/10/2020

(Table 9. Grid 3x3 Inspection Report)

## Progress Table

Progress Table						
No	School Name	Project Duration (Days)	Time Elapsed (Days)	Completion %		
				Planned	Actual	Progress (Planned-Actual)
1	Thahr Al Sarow Basic School for Boys –Jerash	450 Days	41 Days	6.60%	4.79%	-1.81%
2	Jumana Bint Abi Taleb Basic Mixed School - Amman	450 Days	41 Days	6.60%	3.03%	-3.57%
3	Hay Al Iskan Basic Mixed School - Jerash	450 Days	41 Days	6.60%	2.74%	-3.86%

(Table 10. Progress Table)

## Selected Photos

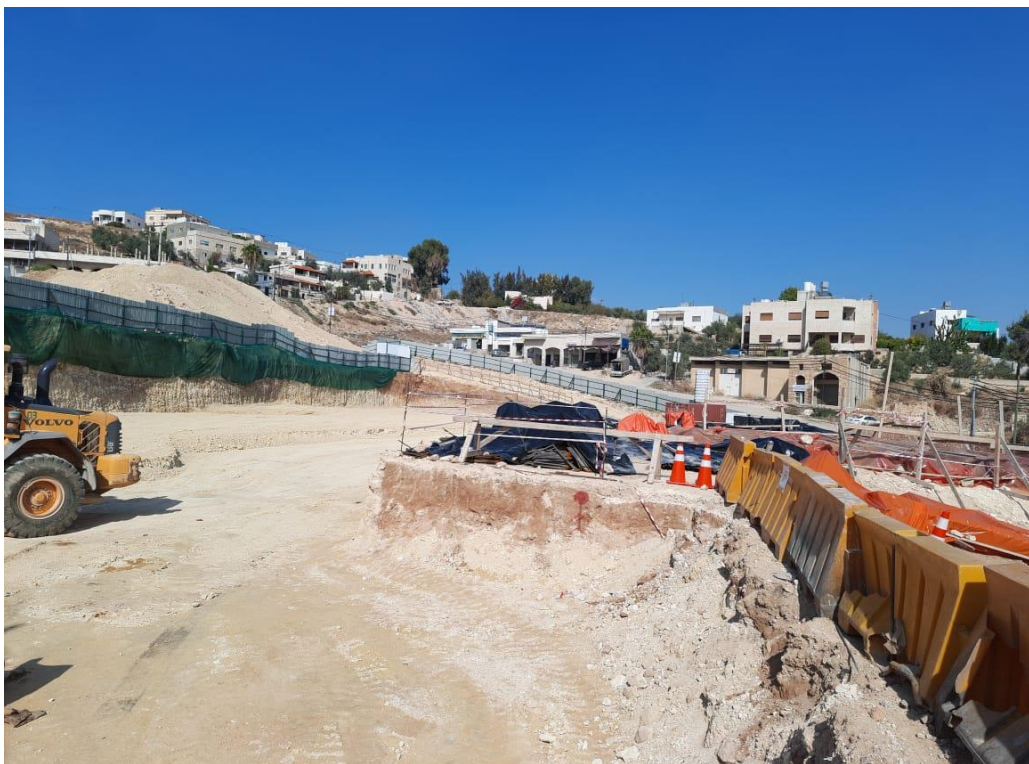
- Thahr Al Sarow Basic School for Boys- Jerash
- Jumana Bint Abi Taleb Basic Mixed School- Amman
- Hay Al Iskan Basic Mixed School- Jerash





Thahr Al Sarow  
Basic School  
for Boys-  
Jerash

Nov. 04, 2020



Nov. 17, 2020



Nov. 18, 2020



Nov. 28, 2020

Jumana Bint Abi  
Taleb Basic  
Mixed School-  
Amman



Nov. 21, 2020



Nov. 21, 2020



Nov. 22, 2020



Nov. 29, 2020



Hay Al Iskan  
Basic Mixed  
School- Jerash

Nov. 18, 2020



Nov. 25, 2020



Nov. 29, 2020





Nov. 29, 2020

# Annexes

- **Annex 1: Site Resources Log**
  - 1.1: Daily Plant & Equipment Log
  - 1.2: Daily Manpower Log
  - 1.3: Percentage of Completion
  - 1.4: Log of Activities
  - 1.5: Cash-Flow
  
- **Annex 2: Correspondence Log**
  - 2.1: Incoming Letters
  - 2.2: Outgoing Letters
  
- **Annex 3: Submittals Log**
  - 3.1: Architectural Submittals
    - 3.1.1: Arch. Shop Drawings
    - 3.1.2: Arch. Materials Submittal
  - 3.2: Electrical Submittals
    - 3.2.1: Elect. Shop Drawings
    - 3.2.2: Elect. Materials Submittal
  - 3.3: Mechanical Submittals
    - 3.3.1: Mech. Shop Drawings
    - 3.3.2: Mech. Materials Submittal
  - 3.4: Civil Submittals
    - 3.4.1: Civil Shop Drawings
    - 3.4.2: Civil Materials Submittal
  
- **Annex 4: Site Visits Report & Meetings**
  - 4.1: Meetings
  - 4.2: Site Visits
  
- **Annex 5: RFI Tracking Log**
  - 5.1: RFIs – Designer
  - 5.2: RFIs – Contractor
  
- **Annex 6: Lab-Tests**
  - 6.1: Tracking Log
  - 6.2: Excerpts of Sampling & Testing
  
- **Annex 7: Mobilization Tracking Log**
- **Annex 8: Non-Conformance Report Tracking Log**
- **Annex 9: Materials Submittals**

## **Annex -1-**

### **Site Resources Logs**

1.1: Daily Plant & Equipment Log

1.2: Daily Manpower Log

1.3: Percentage of Completion  
(Progress Charts)

1.4: Log of Activities  
(Completed & In-Progress)

1.5: Cash-Flow Charts

## **Annex -1-**

### **1.1 Daily Plant – Equipment Log**

# 1.1 Daily Plant & Equipment Log

Wahib Medanat Consultant Engineers

Thahr Al Sarow Basic School for Boys-Jerash

Daily Plant & Equipment Log November 2020																															
Equipment Name	1	2	3	4	5	6	7	8	9	10	11	12	13	14	15	16	17	18	19	20	21	22	23	24	25	26	27	28	29	30	1
Excavator	1	1	1	1	0		1	1	1						1	1	1	0	1		1	1	1	0	0	0					
Shovel Loader	1	1	1	1	1		1	1	1						1	1	1	1	1		1	1	1	1	1	1					
Dump Truck	2	2	2	2	0		1	2	2						0	2	2	0	2		2	4	4	4	4	4					
Steel Cutting, Bending Machine	1	1	1	1	1		1	1	1						1	1	1	1	1		1	1	1	1	1	1					
Surveying Instrument	0	1	0	1	1		0	1	1						1	1	1	1	1		1	1	1	1	1	1					

(Table 11-1. Daily Plant & Equipment Log- Thahr Al Sarow Basic School for Boys)

# 1.1 Daily Plant & Equipment Log

Wahib Medanat Consultant Engineers

Jumana Bint Abi Taleb Basic Mixed School- Amman

Daily Plant & Equipment Log November 2020																																				
Equipment Name	1	2	3	4	5	6	7	8	9	10	11	12	13	14	15	16	17	18	19	20	21	22	23	24	25	26	27	28	29	30	1					
Excavator	0	0	0	0	0	0	0	0	0	0	0	0	0	0	0	0	0	0	0	0	0	1	1	1	1	1	0									
Tipper No. 10	0	0	0	0	0		0	0	0		0	0	0	0	0	0	0	0	0	0		1	1	1	1	1										
Loader	0	0	0	0	0		0	0	0		0	0	0	0	0	0	0	0	0	0		0	1	1	1	1										

(Table 11-2. Daily Plant & Equipment Log- Jumana Bint Abi Taleb Basic Mixed School)

# 1.1 Daily Plant & Equipment Log

Wahib Medanat Consultant Engineers

Hay Al Iskan Basic Mixed School- Jerash

Daily Plant & Equipment Log November 2020																															
Equipment Name	1	2	3	4	5	6	7	8	9	10	11	12	13	14	15	16	17	18	19	20	21	22	23	24	25	26	27	28	29	30	1
Loader	1	1	1	1	1		1	1	1						1	1	1	1	1		1	1	1	1	1						
Jack-Hammer	1	1	1	1	1		2	1	1						1	1	2	2	2		2	2	2	2	2						
Dump Truck	2	2	2	2	2		4	3	3						3	3	3	3	3		3	1	1	1	2						

(Table 11-3. Daily Plant & Equipment Log- Hay Al Iskan Basic Mixed School)

## **Annex -1-**

### **1.2 Daily Manpower**

Log & Charts



## 1.2 Daily Manpower Log

Wahib Medanat Consultant Engineers

Thahr Al Sarow Basic School for Boys- Jerash

Daily Manpower Log November 2020																															
Staff Members	1	2	3	4	5	6	7	8	9	10	11	12	13	14	15	16	17	18	19	20	21	22	23	24	25	26	27	28	29	30	1
Project Manager	0	1	1	1	1		1	1	1						1	1	1	1	1		1	1	1	1	1	1		1	1	1	
Site Engineer	1	1	1	1	1		1	1	1						1	1	1	1	1		1	1	1	1	1	1		1	1	1	
Quantity Surveyor	1	1	1	1	1		1	1	1						1	1	1	1	1		1	1	1	1	1	1		1	1	1	
Electrical Engineer	1	1	1	1	1		1	1	1						1	1	1	1	1		1	1	1	1	1	1		1	1	1	
Mechanical Engineer	0	0	0	0	0		0	1	1						1	1	1	1	1		1	1	1	1	1	1		1	1	1	
Surveyor	0	1	0	1	1		0	1	1						1	1	1	1	1		1	1	1	0	1	1		1	1	1	
Safety Officer	1	1	1	1	1		1	1	1						1	1	1	1	1		1	1	1	1	1	1		1	1	1	
Forman	1	1	1	1	1		1	1	1						1	1	1	1	1		1	1	1	1	1	1		1	1	1	
Skilled Labor	0	4	7	7	0		0	0	0						0	0	0	0	0		0	0	0	0	0	0		0	0	0	
Unskilled Labor	5	4	4	4	4		4	4	4						4	4	4	4	4		4	4	4	4	4	4		4	4	4	

(Table 12-1. Daily Manpower Log- Thahr Al Sarow Basic School for Boys)

## 1.2 Daily Manpower Log

Wahib Medanat Consultant Engineers

Jumana Bint Abi Taleb Basic Mixed School- Amman

Daily Manpower Log November 2020																															
Staff Members	1	2	3	4	5	6	7	8	9	10	11	12	13	14	15	16	17	18	19	20	21	22	23	24	25	26	27	28	29	30	1
Project Manager	0	0	0	0	0		1	0	0						1	1	1	1	1		1	1	1	1							
Site Engineer	1	1	1	1	1		1	1	1						1	1	1	1	1		1	1	1	1							
Quantity Surveyor	1	1	1	0	1		1	1	1						1	1	0	1	1		1	1	1	1							
Planning Engineer	0	0	0	0	0		0	0	0						0	1	1	1	1		1	1	1	1							
Mechanical Engineer	0	0	0	0	0		1	0	0						0	0	0	0	0		0	0	0	0							
Safety Specialist	1	1	1	1	1		0	0	0						1	1	1	0	1		1	1	1	0							
Surveyor	0	0	0	0	1		1	0	0						1	1	0	1	0		0	1	1	0							
Safety Officer	1	1	1	1	1		1	1	1						1	1	1	1	1		1	1	1	1							
Labor	4	4	4	4	4		4	4	4						4	4	0	2	2		2	3	2	2							

(Table 12-2. Daily Manpower Log- Jumana Bint Abi Taleb Basic Mixed School)

## 1.2 Daily Manpower Log

Wahib Medanat Consultant Engineers

Hay Al Iskan Basic Mixed School- Jerash

Daily Manpower Log November 2020																															
Staff Members	1	2	3	4	5	6	7	8	9	10	11	12	13	14	15	16	17	18	19	20	21	22	23	24	25	26	27	28	29	30	1
Project Manager	1	0	0	0	0		1	1	1						0	1	0	1	0		1	0	0	0	0						
Site Engineer	1	1	1	1	1		1	1	1						1	1	1	1	1		1	1	1	1	1						
Quantity Surveyor	1	0	0	0	1		1	1	1						1	1	1	1	1		1	1	1	1	1						
Electrical Engineer	0	1	0	1	1		1	1	1						0	0	1	0	0		0	0	0	0	0						
Mechanical Engineer	0	0	1	0	1		0	0	0						0	0	0	0	0		0	0	0	0	0						
Surveyor	0	0	1	0	1		0	0	0						0	0	0	0	0		0	1	0	0	0						
Safety Officer	1	1	2	1	1		1	0	1						1	1	1	1	1		0	1	1	1	1						
Forman	1	1	1	1	1		1	1	1						1	1	1	1	1		1	1	1	1	1						
Driver	4	4	4	4	4		7	5	5						5	5	6	6	5		5	5	5	4	5						
Labor	3	3	3	3	3		3	3	3						3	3	3	3	3		3	3	3	3	3						

(Table 12-3. Daily Manpower Log- Hay Al Iskan Basic Mixed School)

## **Annex -1-**

### **1.3 Percentage of Completion** (Progress Charts)

### 1.3 Percentage of Completion

Wahib Medanat Consultant Engineers

Thahr Al Sarow Basic School for Boys- Jerash

SKEP III Progress							
Consultant	Wahib Medanat Consultant Engineers				Rep No.	S3P2	
Contractor	Dijlah Est. Construction Co.				Tender No	10/2019/USAID/S	
Site	Thahr Al Sarow Basic Boys - Jerash				Package	Package 2	
Day & Date	Sunday	29	November	2020			
Date	Monthly Elapsed Time%	Monthly Scheduled %	Monthly Actual%	Comulative Elapsed Time%	Cumulative Scheduled %	Cumulative Actual %	Notes
10/31/2020	2.22%	2.50%	2.00%	2.22%	2.50%	2.00%	
11/30/2020	6.67%	4.1%	2.79%	8.89%	6.60%	4.79%	
12/31/2020	6.67%	3.9%		15.78%	10.50%		
1/31/2021	6.67%	6.3%		22.67%	16.80%		
2/28/2021	6.67%	3.4%		28.89%	20.20%		
3/31/2021	6.67%	4.6%		35.78%	24.80%		
4/30/2021	6.67%	4.8%		42.44%	29.60%		
5/31/2021	6.67%	6.2%		49.33%	35.80%		
6/30/2021	6.67%	8.1%		56.00%	43.90%		
7/31/2021	6.67%	9.0%		62.89%	52.90%		
8/31/2021	6.67%	9.1%		69.78%	62.00%		
9/30/2021	6.67%	9.5%		76.44%	71.50%		
10/31/2021	6.67%	7.8%		83.33%	79.30%		
11/30/2021	6.67%	9.7%		90.00%	89.00%		
12/31/2021	6.67%	8.9%		96.89%	97.90%		
1/31/2022	4.40%	2.1%		100.00%	100.00%		

(Table 13-1. Percentage of Completion- Thahr Al Sarow Basic School for Boys)

### 1.3 Percentage of Completion

Wahib Medanat Consultant Engineers

Jumana Bint Abi Taleb Basic Mixed School- Amman

SKEP III Progress							
Consultant	wahib medanat counsultant engineers				Rep No.	S3P2	
Contractor	Dijlah Est. Construction Co.				Tender No	10/2019/USAID/S	
Site	Jumana Bint Abi Taleb Basic Mixed -				Package	Package 2	
Day & Date	Sunday	29	November	2020			
Date	Monthly Elapsed Time%	Monthly Scheduled %	Monthly Actual%	Comulative Elapsed Time%	Cumulative Scheduled %	Cumulative Actual %	Notes
10/31/2020	6.66%	2.50%	0.98%	2.22%	2.50%	0.98%	
11/30/2020	6.66%	4.1%	2.05%	6.66%	6.60%	3.03%	
12/31/2020	6.67%	3.9%		15.78%	10.50%		
1/31/2021	6.67%	6.3%		22.67%	16.80%		
2/28/2021	6.67%	3.4%		28.89%	20.20%		
3/31/2021	6.67%	4.6%		35.78%	24.80%		
4/30/2021	6.67%	4.8%		42.44%	29.60%		
5/31/2021	6.67%	6.2%		49.33%	35.80%		
6/30/2021	6.67%	8.1%		56.00%	43.90%		
7/31/2021	6.67%	9.0%		62.89%	52.90%		
8/31/2021	6.67%	9.1%		69.78%	62.00%		
9/30/2021	6.67%	9.5%		76.44%	71.50%		
10/31/2021	6.67%	7.8%		83.33%	79.30%		
11/30/2021	6.67%	9.7%		90.00%	89.00%		
12/31/2021	6.67%	8.9%		96.89%	97.90%		
1/31/2022	4.40%	2.1%		100.00%	100.00%		

(Table 13-2. Percentage of Completion- Jumana Bint Abi Taleb Basic Mixed School)

### 1.3 Percentage of Completion

Wahib Medanat Consultant Engineers

Hay Al Iskan Basic Mixed School- Jerash

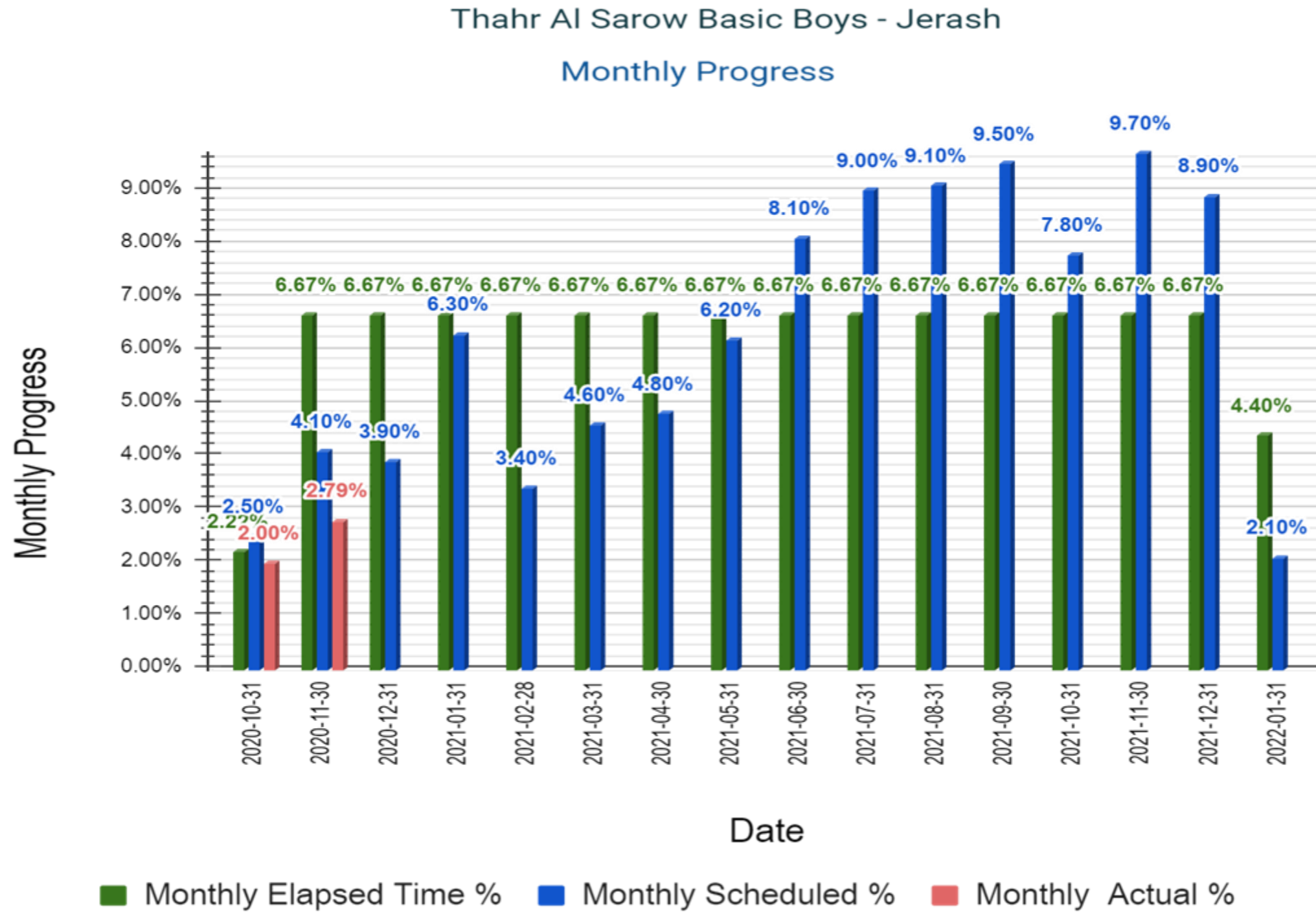
SKEP III Progress							
Consultant	Wahib Medanat Consultant Engineers				Rep No.	S3P2	
Contractor	Dijlah Est. Construction Co.				Tender No	10/2019/USAID/S	
Site	Hay Al Iskan Basic mixed - Jerash				Package	Package 2	
Day & Date	Sunday	29	November	2020			
Date	Monthly Elapsed Time%	Monthly Scheduled %	Monthly Actual%	Comulative Elapsed Time%	Cumulative Scheduled %	Cumulative Actual %	Notes
10/31/2020	2.22%	2.50%	1.80%	2.22%	2.50%	1.80%	
11/30/2020	6.67%	4.1%	2.74%	8.89%	6.60%	4.54%	
12/31/2020	6.67%	3.9%		15.78%	10.50%		
1/31/2021	6.67%	6.3%		22.67%	16.80%		
2/28/2021	6.67%	3.4%		28.89%	20.20%		
3/31/2021	6.67%	4.6%		35.78%	24.80%		
4/30/2021	6.67%	4.8%		42.44%	29.60%		
5/31/2021	6.67%	6.2%		49.33%	35.80%		
6/30/2021	6.67%	8.1%		56.00%	43.90%		
7/31/2021	6.67%	9.0%		62.89%	52.90%		
8/31/2021	6.67%	9.1%		69.78%	62.00%		
9/30/2021	6.67%	9.5%		76.44%	71.50%		
10/31/2021	6.67%	7.8%		83.33%	79.30%		
11/30/2021	6.67%	9.7%		90.00%	89.00%		
12/31/2021	6.67%	8.9%		96.89%	97.90%		
1/31/2022	4.40%	2.1%		100.00%	100.00%		

(Table 13-3. Percentage of Completion- Hay Al Iskan Basic Mixed School)

### 1.3 Percentage of Completion

Wahib Medanat Consultant Engineers

#### Overall Completion Chart- Thahr Al Sarow Basic School for Boys- Jerash



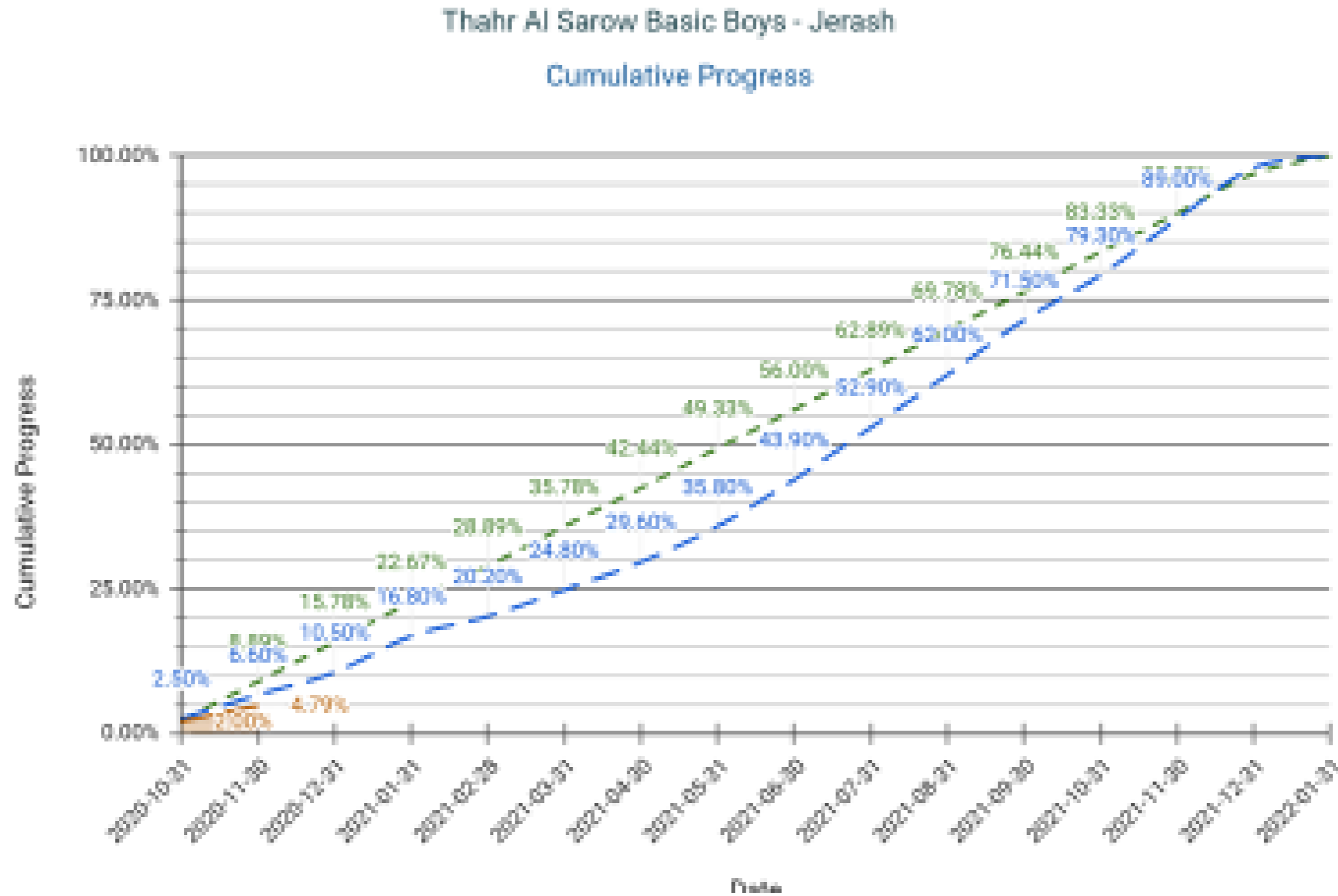
(Figure 3. Percentage of Completion-Thahr Al Sarow Basic School)



### 1.3 Percentage of Completion

Wahib Medanat Consultant Engineers

Overall Completion Chart- Thahr Al Sarow Basic School for Boys- Jerash

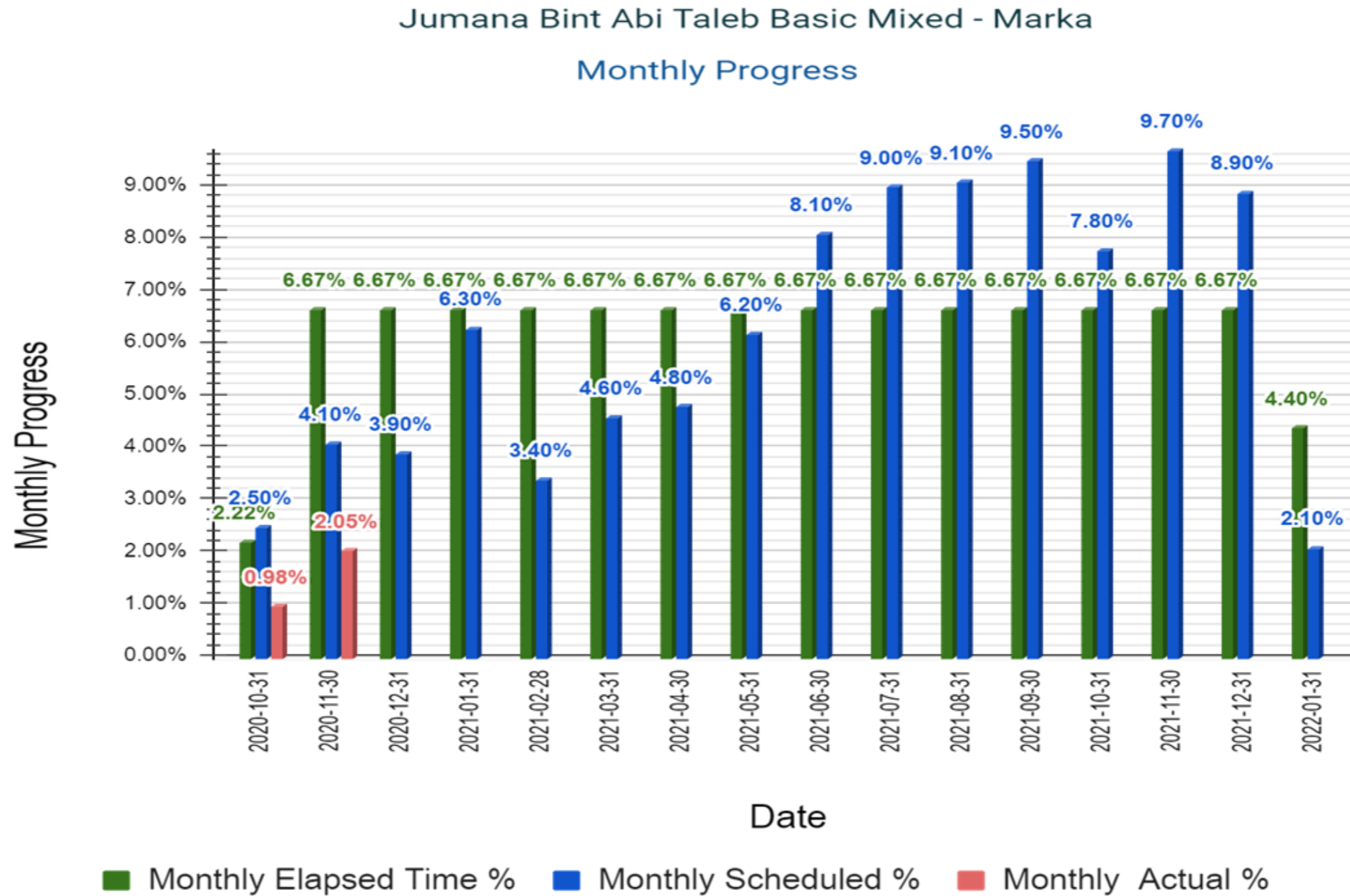


(Figure 4. Percentage of Completion (Cumulative)-Thahr Al Sarow Basic School

### 1.3 Percentage of Completion

Wahib Medanat Consultant Engineers

Overall Completion Chart- Juaman Bint Abi Taleb Basic Mixed School- Amman

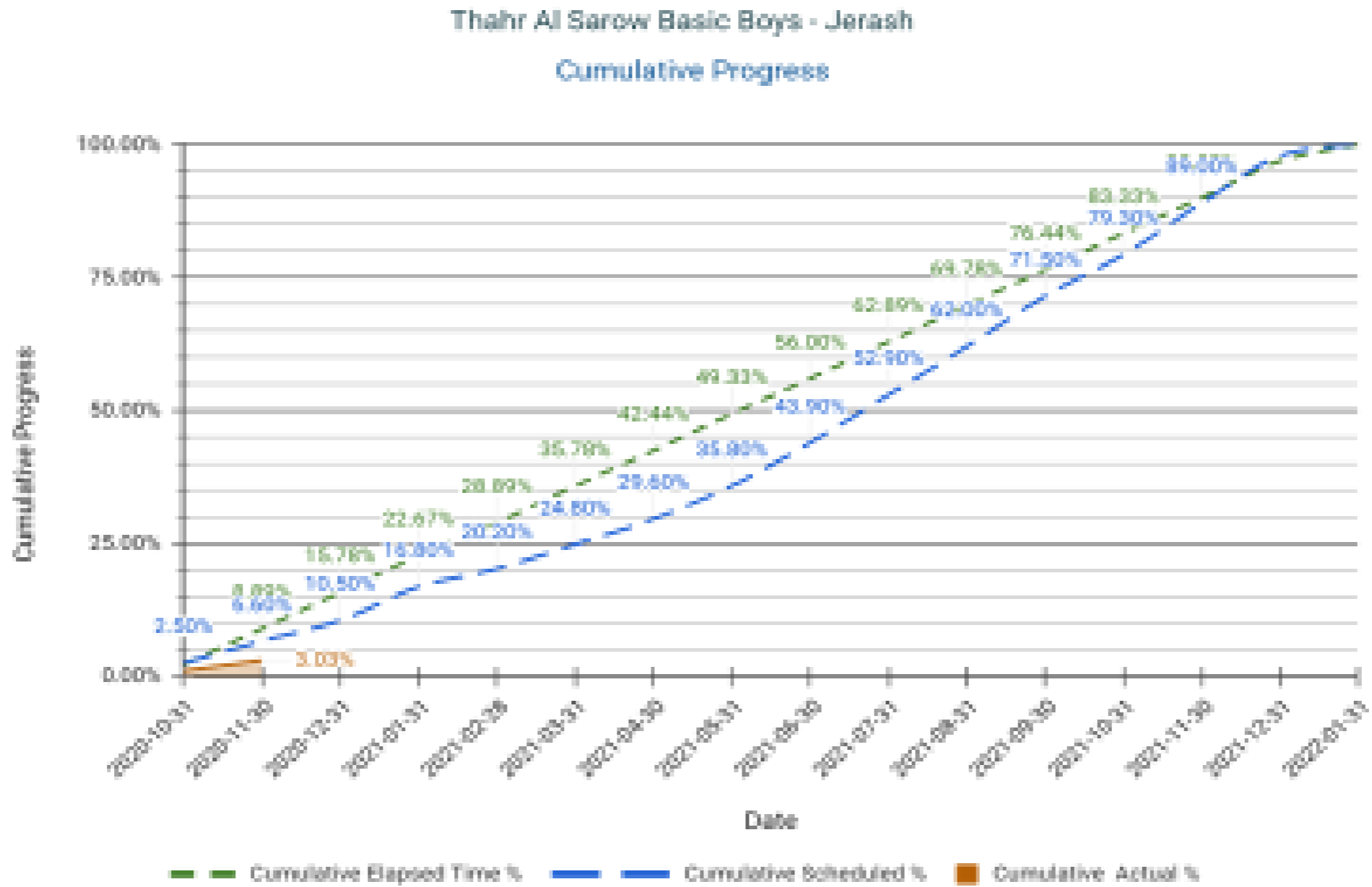


(Figure 5. Percentage of Completion-Jumana Bint Abi Taleb Basic Mixed School)

### 1.3 Percentage of Completion

Wahib Medanat Consultant Engineers

Overall Completion Chart- Juaman Bint Abi Taleb Basic Mixed School- Amman



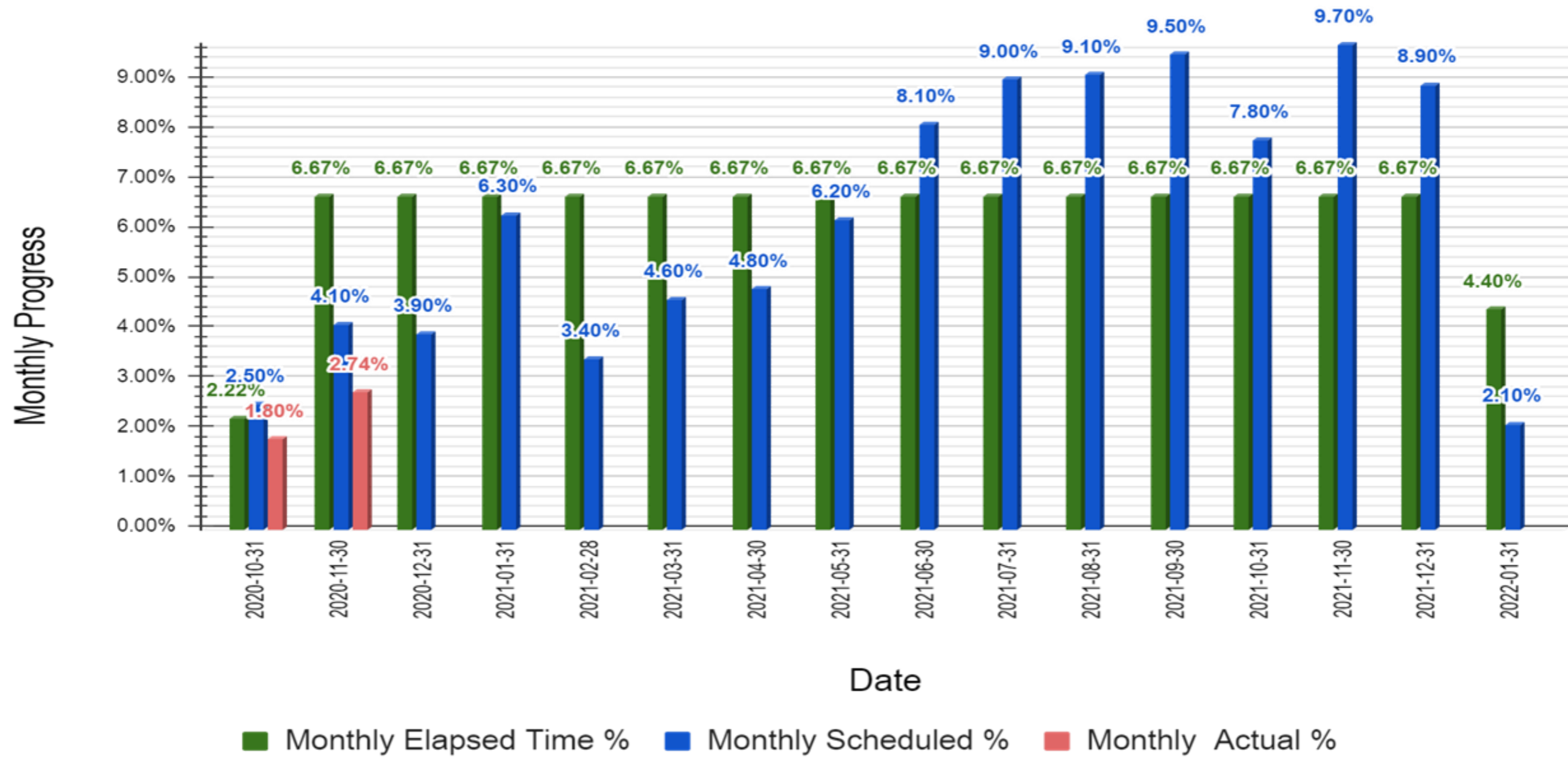
(Figure 6. Percentage of Completion (Cumulative)-Jumana Bint Abi Taleb Basic Mixed School)

### 1.3 Percentage of Completion

Wahib Medanat Consultant Engineers

#### Overall Completion Chart- Hay Al Iskan Basic Mixed School

Hay Al Iskan Basic mixed - Jerash  
Monthly Progress

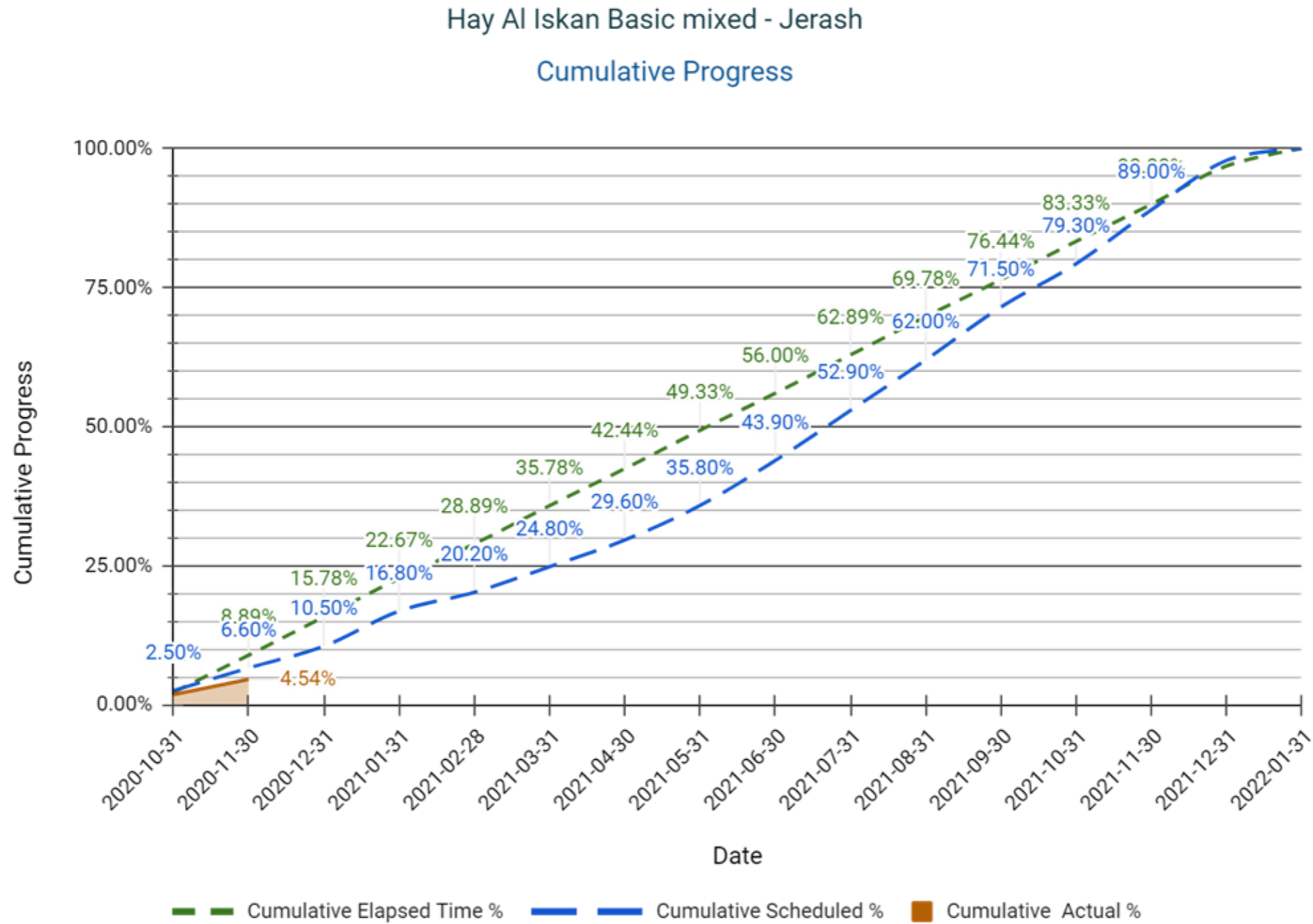


(Figure 7. Percentage of Completion-Hay Al Iskan Basic Mixed School)

### 1.3 Percentage of Completion

Wahib Medanat Consultant Engineers

#### Overall Completion Chart- Hay Al Iskan Basic Mixed School

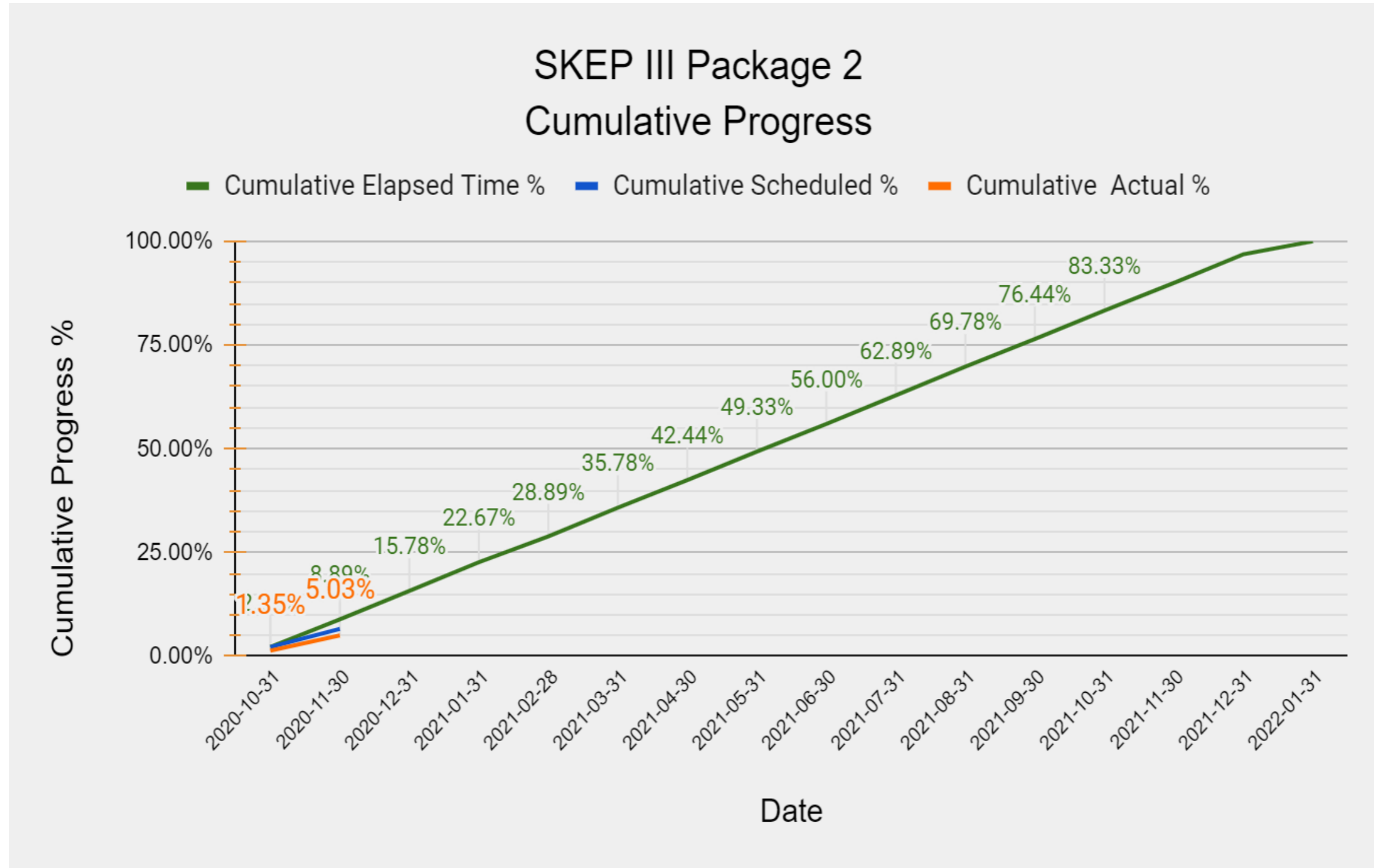


(Figure 8. Percentage of Completion (Cumulative)-Hay Al Iskan Basic Mixed School)

### 1.3 Percentage of Completion

Wahib Medanat Consultant Engineers

#### Overall Completion Chart- SKEP III Schools



(Figure 9. Percentage of Completion (Cumulative Progress)-SKEP III Schools)

## **Annex -1-**

### **1.4 Log of Activities**

(Completed & In-Progress)

## 1.4 Log of Activities

Wahib Medanat Consultant Engineers

### Completed and In-Progress

LOG OF ACTIVITIES											
Completed and In-Progress Record											
Schools for Knowledge Economy Projects (SKEP III)											
Wahib Medanat Consultant Engineer											
No.	School Name	Location	Excavation Works %	Blinding Works %	Foundation Works %	Foundation Works Completion Date	Walls Completion Date	Backfilling Works %	Backfilling Completion Date	Total Percentage of Milestone Completed (%)	Notes
1.	Thahr Al Sarow Basic School for Boys	Jerash	75%	0%	0%	0%	0%	0%	0%	0%	Waiting for Designer Checking/Confirmation
2.	Jumana Bint Abi Taleb Basic Mixed Sch	Amman	25%	0%	0%	0%	-	-	-	1.03%	25% from General Excavation to 30/11/2020
3.	Hay Al Iskan Basic Mixed School	Jerash	55%	0%	0%	29/12/2020	13/01/2020	0%	31/01/2021		

(Table 14. Log of Activities)



## **Annex -1-**

### **1.5 Cash-Flow Charts**

## 1.5 Cash-Flow Chart

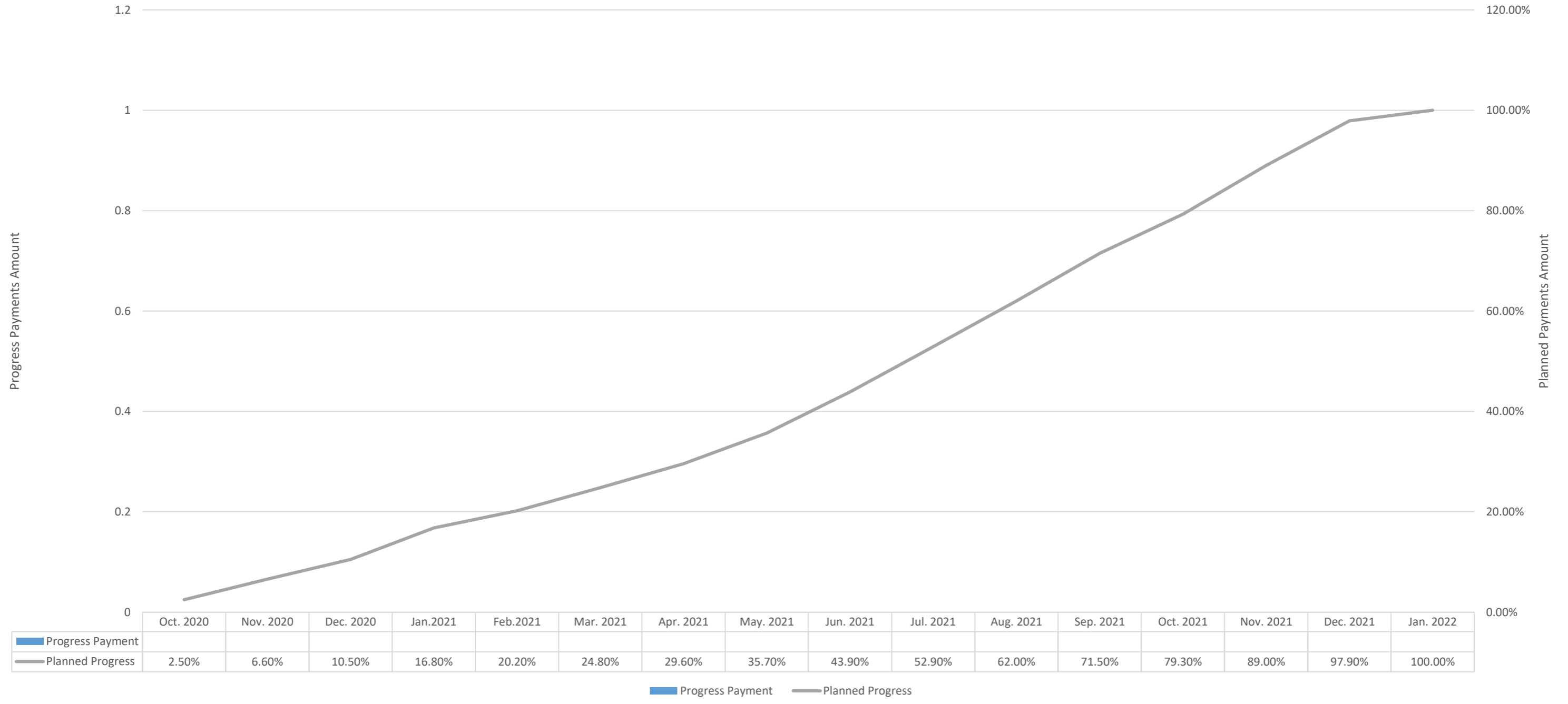
Wahib Medanat Consultant Engineers

### Progress Payments & Planned Progress

Monthly Report Charts & Data Visualization for Cash-Flow															
Project Duration (15 Months)															
<b>Wahib Medanat Consultant Engineers</b>															
Schools for Knowledge Economy Project (SKEP III, PK2)															
<b>Mobilization Payment= 20% of the Total Project Amount</b>															
Contractor obtained 10% of the Mobilization Payment= 831,498.3735 JOD															
Advanced Mobilization Payment 10% yet to be issued for the Contractor= 831,498.3735 JOD															
Progress Payments															
Oct. 2020	Nov. 2020	Dec. 2020	Jan.2021	Feb.2021	Mar. 2021	Apr. 2021	May. 2021	Jun. 2021	Jul. 2021	Aug. 2021	Sep. 2021	Oct. 2021	Nov. 2021	Dec. 2021	Jan. 2022
Planned Progress															
Oct. 2020	Nov. 2020	Dec. 2020	Jan.2021	Feb.2021	Mar. 2021	Apr. 2021	May. 2021	Jun. 2021	Jul. 2021	Aug. 2021	Sep. 2021	Oct. 2021	Nov. 2021	Dec. 2021	Jan. 2022
2.50%	6.60%	10.50%	16.80%	20.20%	24.80%	29.60%	35.70%	43.90%	52.90%	62.00%	71.50%	79.30%	89.00%	97.90%	100.00%

(Table 15. Cash-Flow)

SKEP III- Schools for a Knowledge Economy Project  
Cash-Flow Charts



(Figure 10. Cash-Flow Chart)

## **Annex -2-**

### **Correspondence Logs**

2.1 Incoming Letters

2.2 Outgoing Letters

## 2.1 Correspondence Log

### Incoming Letters

Letter No.	Letter REF.	Date of Letter	Date Received	From	Letter Description	Status		Assigned to	Issued To	Letter Location		Notes
						Answered	Pending			Received Letter	Issued Letter	
1	usaid/3/2019/328	28/10/2020	01/11/2020	Dijlah Establishment Constr. Contr.	Site Equipment	X		Eng. Hasan Shaqboua	MPWH	<a href="#">..\\..\\..\\Scanned Files\\Scanned-الكتب الوار دقا368\\Package 2\\2020-2-2-1990.pdf</a>	<a href="#">..\\..\\Package 2\\2020-368-2-1-2748.docx</a>	
2	usaid/3/2019/329	28/10/2020	01/11/2020	Dijlah Establishment Constr. Contr.	Electricity Network for Caravans	X		Eng. Laith Zwairi	Dijlah Establishment Const. Contr.	<a href="#">..\\..\\..\\Scanned Files\\Scanned-الكتب الوار دقا368\\Package 2\\2020-2-2-1991.pdf</a>	<a href="#">..\\..\\Package 2\\2020-368-2-2-2792.docx</a>	
3	usaid/3/2019/330	31/10/2020	01/11/2020	Dijlah Establishment Constr. Contr.	Material Submittal	X		Eng. Hasan Shaqboua	Dijlah Establishment Const. Contr.	<a href="#">..\\..\\..\\Scanned Files\\Scanned-الكتب الوار دقا368\\Package 2\\2020-2-2-1992.pdf</a>	<a href="#">..\\..\\Package 2\\2020-368-2-2-2796.docx</a>	
4	usaid/3/2019/331	31/10/2020	01/11/2020	Dijlah Establishment Constr. Contr.	Mock-Up Room	X		Eng. Hasan Shaqboua	Dijlah Establishment Const. Contr.	<a href="#">..\\..\\..\\Scanned Files\\Scanned-الكتب الوار دقا368\\Package 2\\2020-2-2-1993.pdf</a>	<a href="#">..\\..\\Package 2\\2020-368-2-2-2826.docx</a>	
5	usaid/3/2019/332	31/10/2020	01/11/2020	Dijlah Establishment Constr. Contr.	Sanitary Fixtures	X		Eng. Hasan Shaqboua Eng. Batool Yassine	Dijlah Establishment Const. Contr.	<a href="#">..\\..\\..\\Scanned Files\\Scanned-الكتب الوار دقا368\\Package 2\\2020-2-2-1994.pdf</a>	<a href="#">..\\..\\Package 2\\2020-368-2-2-2820.docx</a>	
6	usaid/3/2019/334	01/11/2020	01/11/2020	Dijlah Establishment Constr. Contr.	Newly Graduate Engineer	X		Eng. Sawsan Al-Yousef	Dijlah Establishment Const. Contr.	<a href="#">..\\..\\..\\Scanned Files\\Scanned-الكتب الوار دقا368\\Package 2\\2020-2-2-1995.pdf</a>	<a href="#">..\\..\\2020-368-1-2605.docx</a> <a href="#">..\\..\\Package 2\\2020-368-2-2-2842.docx</a>	
7	USAID/3/2019/337	02/11/2020	03/11/2020	Dijlah Establishment Constr. Contr.	Sewage Collection Tank	X		Eng. Sawsan Al-Yousef	Dijlah Establishment Const. Contr.	<a href="#">..\\..\\..\\Scanned Files\\Scanned-الكتب الوار دقا368\\Package 2\\2020-2-2-2001.pdf</a>	<a href="#">..\\..\\Package 2\\2020-368-2-2-2849.docx</a>	
8	USAID/3/2019/338	02/11/2020	03/11/2020	Dijlah Establishment Constr. Contr.	Test Report	X		Eng. Sawsan Al-Yousef	Dijlah Establishment Const. Contr.	<a href="#">..\\..\\..\\Scanned Files\\Scanned-الكتب الوار دقا368\\Package 2\\2020-2-2-2002.pdf</a>	<a href="#">..\\..\\Package 2\\2020-368-2-2-2860.docx</a>	
9	USAID/3/2019/339	03/11/2020	03/11/2020	Dijlah Establishment Constr. Contr.	Tax Exemption	X		Eng. Sawsan Al-Yousef	USAID	<a href="#">..\\..\\..\\Scanned Files\\Scanned-الكتب الوار دقا368\\Package 2\\2020-2-2-2003.pdf</a>	<a href="#">..\\..\\Package 2\\2020-368-2-3-2895.docx</a>	
10	USAID/3/2019/340	03/11/2020	03/11/2020	Dijlah Establishment Constr. Contr.	Material Submittal	X		Eng. Batool Yassin	Dijlah Establishment Const. Contr.	<a href="#">..\\..\\..\\Scanned Files\\Scanned-الكتب الوار دقا368\\Package 2\\2020-2-2-2004.pdf</a>	<a href="#">..\\..\\Package 2\\2020-368-2-2-2862.docx</a>	
11	USAID/3/2019/335	02/11/2020	03/11/2020	Dijlah Establishment Constr. Contr.	Stone Supplier	X		Eng. Batool Yassin	Dijlah Establishment Const. Contr.	<a href="#">..\\..\\..\\Scanned Files\\Scanned-الكتب الوار دقا368\\Package 2\\2020-2-2-2000.pdf</a>	<a href="#">..\\..\\Package 2\\2020-368-2-2-2851.docx</a>	

Letter No.	Letter REF.	Date of Letter	Date Received	From	Letter Description	Status		Assigned to	Issued To	Letter Location		Notes
						Answered	Pending			Received Letter	Issued Letter	
12	25104/24/28/220/530105	05/11/2020	05/11/2020	Royal Sceintific Society	Test Report	X		Eng. Sawsan Al-Yousef	MPWH	<a href="#">C:\Users\user\Documents\Scanned Files\Scanned-الكتب-الواردة\Package 2\2020-2-3-2022.pdf</a>	<a href="#">C:\Users\user\Documents\Scanned Files\Scanned-الكتب-الواردة\Package 2\2020-2-2-2846.docx</a>	
13	USAID/3/2019/342	05/11/2020	05/11/2020	Dijlah Establishment Constr. Contr.	Contractor's Superintendence	X		Eng. Sawsan Al-Yousef	MPWH	<a href="#">C:\Users\user\Documents\Scanned Files\Scanned-الكتب-الواردة\Package 2\2020-2-2-2023.pdf</a>	<a href="#">C:\Users\user\Documents\Scanned Files\Scanned-الكتب-الواردة\Package 2\2020-2-1-2837.docx</a>	
14	USAID/3/2019/343	05/11/2020	05/11/2020	Dijlah Establishment Constr. Contr.	Safety Plan	X		Eng. Sawsan Al-Yousef	Dijlah Establishment Const. Contr.	<a href="#">C:\Users\user\Documents\Scanned Files\Scanned-الكتب-الواردة\Package 2\2020-2-2-2024.pdf</a>	<a href="#">C:\Users\user\Documents\Scanned Files\Scanned-الكتب-الواردة\Package 2\2020-2-2-2843.docx</a>	
15	25446/24/28/220/530103	09/11/2020	09/11/2020	Royal Sceintific Society	Test Report	X		Eng. Sawsan Al-Yousef	Dijlah Establishment Const. Contr.	<a href="#">C:\Users\user\Documents\Scanned Files\Scanned-الكتب-الواردة\Package 2\2020-2-3-2035.pdf</a>	<a href="#">C:\Users\user\Documents\Scanned Files\Scanned-الكتب-الواردة\Package 2\2020-2-2-2897.docx</a>	
16	USAID/3/2019/346	07/11/2020	15/11/2020	Dijlah Establishment Constr. Contr.	Material Submittal	X		Eng. Batool Yassin Eng. Hasan Shaqbua	Dijlah Establishment Const. Contr.	<a href="#">C:\Users\user\Documents\Scanned Files\Scanned-الكتب-الواردة\Package 2\2020-2-2-2036.pdf</a>	<a href="#">C:\Users\user\Documents\Scanned Files\Scanned-الكتب-الواردة\Package 2\2020-2-2-2952.docx</a>	
17	USAID/3/2019/348	08/11/2020	15/11/2020	Dijlah Establishment Constr. Contr.	Answers for Notes for D.B & Lighting System	X		Eng. Laith Zwairi	Dijlah Establishment Const. Contr.	<a href="#">C:\Users\user\Documents\Scanned Files\Scanned-الكتب-الواردة\Package 2\2020-2-2-2037.pdf</a>	<a href="#">C:\Users\user\Documents\Scanned Files\Scanned-الكتب-الواردة\Package 2\2020-2-2-2902.docx</a>	
18	USAID/3/2019/351	09/11/2020	15/11/2020	Dijlah Establishment Constr. Contr.	Supporting of the Excavation Sides	X		Eng. Sawsan Al-Yousef Eng. Natheer Amareen	Dijlah Establishment Const. Contr.	<a href="#">C:\Users\user\Documents\Scanned Files\Scanned-الكتب-الواردة\Package 2\2020-2-2-2039.pdf</a>	<a href="#">C:\Users\user\Documents\Scanned Files\Scanned-الكتب-الواردة\Package 2\2020-2-2-2884.docx</a>	
19	USAID/3/2019/352	09/11/2020	15/11/2020	Dijlah Establishment Constr. Contr.	Submittal for Fire Distribution System	X		Eng. Laith Zwairi	Dijlah Establishment Const. Contr.	<a href="#">C:\Users\user\Documents\Scanned Files\Scanned-الكتب-الواردة\Package 2\2020-2-2-2040.pdf</a>	<a href="#">C:\Users\user\Documents\Scanned Files\Scanned-الكتب-الواردة\Package 2\2020-2-2-2915.docx</a>	
20	USAID/3/2019/353	09/11/2020	15/11/2020	Dijlah Establishment Constr. Contr.	Sewage Collection Tank	X		Eng. Sawsan Al-Yousef Eng. Natheer Amareen	Dijlah Establishment Const. Contr.	<a href="#">C:\Users\user\Documents\Scanned Files\Scanned-الكتب-الواردة\Package 2\2020-2-2-2041.pdf</a>	<a href="#">C:\Users\user\Documents\Scanned Files\Scanned-الكتب-الواردة\Package 2\2020-2-2-3015.docx</a>	
21	USAID/3/2019/354	15/11/2020	15/11/2020	Dijlah Establishment Constr. Contr.	Wooden Doors Accessories	X		Eng. Batool Yassin	Dijlah Establishment Const. Contr.	<a href="#">C:\Users\user\Documents\Scanned Files\Scanned-الكتب-الواردة\Package 2\2020-2-2-2045.pdf</a>	<a href="#">C:\Users\user\Documents\Scanned Files\Scanned-الكتب-الواردة\Package 2\2020-2-2-2912.docx</a>	
22	USAID/3/2019/355	15/11/2020	15/11/2020	Dijlah Establishment Constr. Contr.	Insurance Policy	X		Eng. Hasan Shaqbua	MPWH	<a href="#">C:\Users\user\Documents\Scanned Files\Scanned-الكتب-الواردة\Package 2\2020-2-2-2064.pdf</a>	<a href="#">C:\Users\user\Documents\Scanned Files\Scanned-الكتب-الواردة\Package 2\2020-2-1-2885.docx</a>	
23	USAID/3/2019/357	15/11/2020	15/11/2020	Dijlah Establishment Constr. Contr.	Advance Mobilization Payment	X		Eng. Sawsan Al-Yousef Eng. Natheer Amareen	Dijlah Establishment Const. Contr.	<a href="#">C:\Users\user\Documents\Scanned Files\Scanned-الكتب-الواردة\Package 2\2020-2-2-2049.pdf</a>	<a href="#">C:\Users\user\Documents\Scanned Files\Scanned-الكتب-الواردة\Package 2\2020-368-2-2-2939.pdf</a>	
24	USAID/3/2019/356	15/11/2020	15/11/2020	Dijlah Establishment Constr. Contr.	Modified Safety Plan	X		Eng. Sawsan Al-Yousef Eng. Natheer Amareen	Dijlah Establishment Const. Contr.	<a href="#">C:\Users\user\Documents\Scanned Files\Scanned-الكتب-الواردة\Package 2\2020-2-2-2047.pdf</a>	<a href="#">C:\Users\user\Documents\Scanned Files\Scanned-الكتب-الواردة\Package 2\2020-368-2-2-2936.pdf</a>	

Letter No.	Letter REF.	Date of Letter	Date Received	From	Letter Description	Status		Assigned to	Issued To	Letter Location		Notes
						Answered	Pending			Received Letter	Issued Letter	
25	USAID/3/2019/350	09/11/2020	15/11/2020	Dijlah Establishment Constr. Contr.	Project's Baseline Schedule	X		Eng. Sawsan Al-Yousef	Dijlah Establishment Constr. Contr.	<a href="#">C:\Users\...Scanned Files\Scanned-الكتب-الصادر\Package 2\2020-2-2-2038.pdf</a>	<a href="#">C:\Users\...Scanned Files\Scanned-الكتب-الصادر\Package 2\2020-368-2-2-2937.pdf</a>	
26	USAID/3/2019/361	16/11/2020	17/11/2020	Dijlah Establishment Constr. Contr.	Stone Supplier	X		Eng. Batool Yassin	Dijlah Establishment Constr. Contr.	<a href="#">C:\Users\...Scanned Files\Scanned-الكتب-الصادر\Package 2\2020-2-2-2065.pdf</a>	<a href="#">C:\Users\...Scanned Files\Scanned-الكتب-الصادر\Package 2\2020-368-2-2-2940.pdf</a>	
27	USAID/3/2019/362	16/11/2020	17/11/2020	Dijlah Establishment Constr. Contr.	site office equipment	X		Eng. Batool Yassin	Dijlah Establishment Constr. Contr.	<a href="#">C:\Users\...Scanned Files\Scanned-الكتب-الصادر\Package 2\2020-2-2-2066.pdf</a>	<a href="#">C:\Users\...Scanned Files\Scanned-الكتب-الصادر\Package 2\2020-368-2-2-2933.pdf</a>	
28	USAID/3/2019/363	17/11/2020	17/11/2020	Dijlah Establishment Constr. Contr.	Material Submittal	X		Eng. Batool Yassin	Dijlah Establishment Constr. Contr.	<a href="#">C:\Users\...Scanned Files\Scanned-الكتب-الصادر\Package 2\2020-2-2-2067.pdf</a>	<a href="#">C:\Users\...Package 2\2020-368-2-2-2961.docx</a>	
29	USAID/3/2019/364	17/11/2020	17/11/2020	Dijlah Establishment Constr. Contr.	Mechanical Drawings	X		Eng. Musab Khalil Eng. Mohammd Almajali	Dijlah Establishment Const. Contr.	<a href="#">C:\Users\...Scanned Files\Scanned-الكتب-الصادر\Package 2\2020-2-2-2068.pdf</a>	<a href="#">C:\Users\...Package 2\2020-368-2-2-2930.docx</a>	
30	USAID/3/2019/365	17/11/2020	17/11/2020	Dijlah Establishment Constr. Contr.	Electricity Network for Site Office	X		Eng. Laith Zwairi	Dijlah Establishment Constr. Contr.	<a href="#">C:\Users\...Scanned Files\Scanned-الكتب-الصادر\Package 2\2020-2-2-2069.pdf</a>	<a href="#">C:\Users\...Scanned Files\Scanned-الكتب-الصادر\Package 2\2020-368-2-2-2941.pdf</a>	
31	USAID/3/2019/366	17/11/2020	17/11/2020	Dijlah Establishment Constr. Contr.	Steel Reinforcement	X		Eng. Sawsan Al-Yousef	Dijlah Establishment Constr. Contr.	<a href="#">C:\Users\...Scanned Files\Scanned-الكتب-الصادر\Package 2\2020-2-2-2070.pdf</a>	<a href="#">C:\Users\...Scanned Files\Scanned-الكتب-الصادر\Package 2\2020-368-2-2-2938.pdf</a>	
32	USAID/3/2019/367	17/11/2020	17/11/2020	Dijlah Establishment Constr. Contr.	Under Ground Rain Water Tank	X		Eng. Sawsan Al-Yousef	Dijlah Establishment Constr. Contr.	<a href="#">C:\Users\...Scanned Files\Scanned-الكتب-الصادر\Package 2\2020-2-2-2071.pdf</a>	<a href="#">C:\Users\...Package 2\2020-368-2-2-2014.docx</a>	
33	USAID/3/2019/375	21/11/2020	21/11/2020	Dijlah Establishment Constr. Contr.	Submittals for Electrical Elevators	X		Eng. Laith Zwairi	Dijlah Establishment Constr. Contr.	<a href="#">C:\Users\...Scanned Files\Scanned-الكتب-الصادر\Package 2\2020-2-2-2081.pdf</a>	<a href="#">C:\Users\...Package 2\2020-368-2-2-2951.docx</a>	
34	26336/24/28/220/530105	22/11/2020	22/11/2020	Royal Sceintific Society	Test Report	X		Eng. Sawsan Al-Yousef	File	<a href="#">C:\Users\...Scanned Files\Scanned-الكتب-الصادر\Package 2\2020-2-3-2089.pdf</a>	File	
35	USAID/3/2019/377	22/11/2020	22/11/2020	Dijlah Establishment Constr. Contr.	Electricity Network to Site Office	X		Eng. Laith Zwairi	Dijlah Establishment Constr. Contr.	<a href="#">C:\Users\...Scanned Files\Scanned-الكتب-الصادر\Package 2\2020-1-2-2090.pdf</a>	<a href="#">C:\Users\...Package 2\2020-368-2-2-3028.docx</a>	
36	USAID/3/2019/379	23/11/2020	23/11/2020	Dijlah Establishment Constr. Contr.	Material Submittal- Radiator	X		Eng. Musab Khalil Eng. Mohammad Almajale	Dijlah Establishment Constr. Contr.	<a href="#">C:\Users\...Scanned Files\Scanned-الكتب-الصادر\Package 2\2020-2-2-2101.pdf</a>	<a href="#">C:\Users\...Package 2\2020-368-2-2-2989.docx</a>	
37	USAID/3/2019/382	23/11/2020	23/11/2020	Dijlah Establishment Constr. Contr.	Under Ground Rain Water Tank	X		Eng. Sawsan Al-Yousef Eng. Natheer Amareen	Dijlah Establishment Constr. Contr.	<a href="#">C:\Users\...Scanned Files\Scanned-الكتب-الصادر\Package 2\2020-2-2-2104.pdf</a>	<a href="#">C:\Users\...Package 2\2020-368-2-2-2014.docx</a>	

Letter No.	Letter REF.	Date of Letter	Date Received	From	Letter Description	Status		Assigned to	Issued To	Letter Location		Notes
						Answered	Pending			Received Letter	Issued Letter	
38	USAID/3/2019/380	23/11/2020	23/11/2020	Dijlah Establishment Constr. Contr.	Level of Foundation		X	Eng. Sawsan Al-Yousef Eng. Natheer Amareen		<a href="#">\\...\\Scanned Files\\Scanned-الكتب-الواردة\Package 2\2020-2-2-2102+ attach..pdf</a>		
39	USAID/2019/34533/10	24/11/2020	24/11/2020	MPWH	Transfer of Property	X		File	-	<a href="#">\\...\\Scanned Files\\Scanned-الكتب-الواردة\Package 2\2020-2-1-2114.pdf</a>	-	
40	USAID/2019/34490/10	23/11/2020	24/11/2020	MPWH	Licensing for Jumana Bint Abi Taleb Basic Mixed School	X		File	-	<a href="#">\\...\\Scanned Files\\Scanned-الكتب-الواردة\Package 2\2020-3-1-2113.pdf</a>	-	
41	USAID/3/2019/383	23/11/2020	25/11/2020	Dijlah Establishment Constr. Contr.	Distribution Boards Thickness	X		Eng. Laith Zwairi	Dijlah Establishment Constr. Contr.	<a href="#">\\...\\Scanned Files\\Scanned-الكتب-الواردة\Package 2\2020-2-2-2123.pdf</a>	<a href="#">\\...\\Package 2\2020-368-2-2-3029.docx</a>	
42	USAID/3/2019/384	24/11/2020	25/11/2020	Dijlah Establishment Constr. Contr.	Contractor's Superintendence	X		Eng. Sawsan Al-Yousef		<a href="#">\\...\\Scanned Files\\Scanned-الكتب-الواردة\Package 2\2020-2-2-2124.pdf</a>		
43	USAID/3/2019/385	24/11/2020	25/11/2020	Dijlah Establishment Constr. Contr.	Material Submittal	X		Eng. Batool Yassin	Dijlah Establishment Constr. Contr.	<a href="#">\\...\\Scanned Files\\Scanned-الكتب-الواردة\Package 2\2020-2-2-2125.pdf</a>	<a href="#">\\...\\Package 2\2020-368-2-2-3041.docx</a>	
44	USAID/3/2019/386	25/11/2020	25/11/2020	Dijlah Establishment Constr. Contr.	ACES Report for Site Excavation Side Slopes	X		Eng. Sawsan Al-Yousef Eng. Natheer Amareen Eng. Hasan Shaqbua		<a href="#">\\...\\Scanned Files\\Scanned-الكتب-الواردة\Package 2\2020-2-2-2127.pdf</a>	<a href="#">\\...\\Scanned Files\\Scanned-الكتب-الواردة\Package 2\2020-368-2-2-3019.pdf</a>	
45	USAID/3/2019/387	25/11/2020	25/11/2020	Dijlah Establishment Constr. Contr.	Time Extension of Special Tender		X	Eng. Sawsan Al-Yousef		<a href="#">\\...\\Scanned Files\\Scanned-الكتب-الواردة\Package 2\2020-2-2-2128.pdf</a>		
46	USAID/3/2019/388	25/11/2020	25/11/2020	Dijlah Establishment Constr. Contr.	Electrical Pole		X	Eng. Sawsan Al-Yousef		<a href="#">\\...\\Scanned Files\\Scanned-الكتب-الواردة\Package 2\2020-2-2-2129.pdf</a>		
47	USAID/3/2019/392	25/11/2020	26/11/2020	Dijlah Establishment Constr. Contr.	Delay in Work Progress		X	Eng. Sawsan Al-Yousef		<a href="#">\\...\\Scanned Files\\Scanned-الكتب-الواردة\Package 2\2020-2-2-2134.pdf</a>		
48	USAID/3/2019/393	26/11/2020	26/11/2020	Dijlah Establishment Constr. Contr.	Commencement of Work		X	Eng. Sawsan Al-Yousef		<a href="#">\\...\\Scanned Files\\Scanned-الكتب-الواردة\Package 2\2020-2-2-2135.pdf</a>		
49	USAID/3/2019/390	25/11/2020	28/11/2020	Dijlah Establishment Constr. Contr.	Radiator		X	Eng. Musab Khalil Eng. Mohammad Almajale		<a href="#">\\...\\Scanned Files\\Scanned-الكتب-الواردة\Package 2\2020-2-2-2139.pdf</a>		
50	USAID/3/2019/394	28/11/2020	28/11/2020	Dijlah Establishment Constr. Contr.	Under Ground Rain Water Tank		X	Eng. Sawsan Al-Yousef		<a href="#">\\...\\Scanned Files\\Scanned-الكتب-الواردة\Package 2\2020-2-2-2140.pdf</a>		



Letter No.	Letter REF.	Date of Letter	Date Received	From	Letter Description	Status		Assigned to	Issued To	Letter Location		Notes
						Answered	Pending			Received Letter	Issued Letter	
51	USAID/3/2019/395	28/11/2020	28/11/2020	Dijlah Establishment Constr. Contr.	Sewage Collection Tank		X	Eng. Sawsan Al-Yousef		<a href="#">..\\..\\..\\Scanned Files\\Scanned-الكتب-الواردة\\Package 2\\2020-2-2-2141.pdf</a>		
52	USAID/3/2019/396	28/11/2020	28/11/2020	Dijlah Establishment Constr. Contr.	Test		X	Eng. Mohammad Almajale Eng. Musab Khalil		<a href="#">..\\..\\..\\Scanned Files\\Scanned-الكتب-الواردة\\Package 2\\2020-2-2-2142.pdf</a>		
53	USAID/3/2019/389	25/11/2020	25/11/2020	Dijlah Establishment Constr. Contr.	Electrical Shop Drawings	X		Eng. Musa Abdelhadi Eng. Liath Zwairi	Dijlah Establishment Constr. Contr.	<a href="#">..\\..\\..\\Scanned Files\\Scanned-الكتب-الواردة\\Package 2\\2020-2-2-2130.pdf</a>	<a href="#">..\\..\\Package 2\\2020-368-2-2-3030.docx</a>	
54	USAID/3/2019/400	28/11/2020	29/11/2020	Dijlah Establishment Constr. Contr.	Fire Detection System Notes		X	Eng. Musa Abdelhadi Eng. Liath Zwairi		<a href="#">..\\..\\..\\Scanned Files\\Scanned-الكتب-الواردة\\Package 2\\2020-2-2-2144.pdf</a>		
55	USAID/10/2019/34740	24/11/2020	29/11/2020	MPWH	Modifid Safety Plan		X	Eng. Sawsan Al-Yousef		<a href="#">..\\..\\..\\Scanned Files\\Scanned-الكتب-الواردة\\Package 2\\2020-2-1-2152.pdf</a>		
56												
57												
58												
59												
60												
61												
62												

## 2.2 Correspondence Log

### Outgoing Letters

Letter No.	Letter REF.	Letter Description	Date of Issuance	Issued To		Letter Location	Notes
				Name	Response		
1	2020-368-2-JEA-2788	Supervision Staff	03/11/2020	JEA		<a href="#">..\..\Package 2\2020-368-2-JEA-2788.docx</a>	
2	2020-368-2-2-2831	Shoring System	08/11/2020	Dijlah Est. Const. Contr.		<a href="#">..\..\Package 2\2020-368-2-2-2831.docx</a>	
3	2020-368-2-2-2948	mail	22/11/2020	Dijlah Est. Const. Contr.		<a href="#">..\..\..\..\Scanned Files\Scanned-الكتب-الصادرة\Package 2\2020-368-2-2-</a>	
4	2020-368-2-1-2969	Water Supply and Sewage Connection- Jumana Bint Abi Taleb Basic Mixed School	23/11/2020	MPWH		<a href="#">..\..\Package 2\2020-368-2-1-2969.docx</a>	
5	2020-368-2-1-2978	Boundary Wall- Jumana Bint Abi Taleb Basic Mixed School	24/11/2020	MPWH		<a href="#">..\..\Package 2\2020-368-2-1-2978.docx</a>	
6	2020-368-2-1-3013	Advanced Mobilization Payment	26/11/2020	MPWH		<a href="#">..\..\Package 2\2020-368-2-1-3013.docx</a>	
7	2020-368-2-2-3022	Shoring System	28/11/2020	Dijlah Est. Const. Contr.		<a href="#">..\..\..\..\Scanned Files\Scanned-الكتب-الصادرة\Package 2\2020-368-2-2-</a>	
8	2020-368-2-2-3023	Shoring System	28/11/2020	Dijlah Est. Const. Contr.		<a href="#">..\..\..\..\Scanned Files\Scanned-الكتب-الصادرة\Package 2\2020-368-2-2-</a>	
9	2020-368-2-2-3024	Obstacles	28/11/2020	Dijlah Est. Const. Contr.		<a href="#">..\..\..\..\Scanned Files\Scanned-الكتب-الصادرة\Package 2\2020-368-2-2-</a>	

## 2.2 Correspondence Log

### Outgoing Letters

Letter No.	Letter REF.	Letter Description	Date of Issuance	Issued To		Letter Location	Notes
				Name	Response		
10	2020-368-2-2-3026	Non Conformance/Violation Order	29/11/2020	Dijlah Est. Const. Contr.		<a href="#">..\..\Package 2\2020-368-2-2-3026.docx</a>	
11	2020-368-2-2-3032	Materials Submittals	29/11/2020	Dijlah Est. Const. Contr.		<a href="#">..\..\Package 2\2020-368-2-2-3032.docx</a>	
12	2020-368-2-2-3039	Workshop and Coordiantion Drawings	29/11/2020	Dijlah Est. Const. Contr.		<a href="#">..\..\Package 2\2020-368-2-2-3039.docx</a>	
13							
14							
15							

## **Annex -3-**

### **Submittals Logs**

#### 3.1: Architectural Submittals

3.1.1: Arch. Shop Drawings

3.1.2: Arch. Materials Submittal

#### 3.2: Electrical Submittals

3.2.1: Elect. Shop Drawings

3.2.2: Elect. Materials Submittal

#### 3.3: Mechanical Submittals

3.3.1: Mech. Shop Drawings

3.3.2: Mech. Materials Submittal

#### 3.4: Civil Submittals

3.4.1: Civil Shop Drawings

3.4.2: Civil Materials Submittal

## **Annex -3-**

### **1.1 Architectural Submittals**

3.1.1: Arch. Shop Drawings

3.1.2: Arch. Materials Submittals

### 3.1.2 Arch. Materials Submittal

Wahib Medanat Consultant Engineers

Architectural Materials Submittal Tracking LOG																
Date:		Supervision Engineer:														
Project:		Contractor:														
Rep no.:		Site:														
No.	Item Type	Revision	Item Name	Received From	Date Received	Status				Copies Delivered To			Specified Date for Submission	Max Date	Date of Response	Notes
						Approved	Approved as Noted	Revise & Resubmit	Rejected	File	Site	Contractor				
1	wooden door accessories		wooden door accessories	Dijlah Establishment Const. Contr.	03/11/2020				X	X		X				
2	corrugated sheet adhesive		corrugated sheet adhesive	Dijlah Establishment Const. Contr.	03/11/2021		X			X		X				
3	stone works	2	stone works	Dijlah Establishment Const. Contr.	03/11/2022			X		X		X				
4	Aluminum Works		Windows & Curtain Walls	Dijlah Establishment Const. Contr.	25/11/2020											
5																
6																
7																
8																

## **Annex -3-**

### **1.2 Electrical Submittals**

3.2.1: Elect. Shop Drawings

3.2.2: Elect. Materials Submittal

### 3.2.1 Elect. Shop Drawings

Wahib Medanat Consultant Engineers

Electrical Shop Drawings Tracking LOG																
Date:		Supervision Engineer:														
Project:		Contractor:														
Rep no.:		Site:														
No.	Drawing REF.	Revision	Drawing Name	Received From	Date Received	Status				Copies Delivered To			Specified Date for Submission	Max Date	Date of Response	Notes
						Approved	Approved as Noted	Revise & Resubmit	Rejected	File	Site	Contractor				
1	01		Electrical ShopDrawings	Dijlah Establishment Contr. Const.	25/11/2020			X							28/11/2020	2. Providing coordination drawings for electrical works with architectural and mechanical works. 3. Provide how to connect the elevator with fire alarm control panel. 4. Determine the cable data path between patch panel and guard house. 5. Clarify the number of pipes coming out from the MDB. 6. Clarify the dimension on all plans. 7. Unifying the dimension of the socket cams. 8. Clarify the source of air conditions feeding point. 9. Clarify the dimensions and distance for all distribution boards. 10. Restudy the dimensions between sockets. 11. Clarify the dimensions and distance for cable ladder and cable tray. 12. Determine the location of the beginning of the zones for all low current systems. 13. All dimensions should be from fixed point. 14. Provide a detailed drawing for the connection smoke detectors above and below false ceiling in the multi- purpose hall. 15. Clarify the number of the low current piper on the site plan. 16. Provide detailed drawing for lighting Parcan. 17. Provide junction box dimensions. 18. Clarify the paths for connecting external lighting circuits with the distribution boards. 19. Restudy all lighting system plans. 20. Provide plan of connecting all equipment on a roof with the lighting system.
2																
3																



### 3.2.2 Elect. Materials Submittal

Wahib Medanat Consultant Engineers

Electrical Materials Submittal Tracking LOG																
Date:		Supervision Engineer: Wahib Medanat Consultant Engineers														
Project:		Contractor: Dijlah Est. Constr. Contr.														
Rep no.:		Site:														
No.	Item Type	Revision	Item Name	Received From	Date Received	Status				Copies Delivered To			Specified Date for Submission	Max Date	Date of Response	Notes
						Approved	Approved as Noted	Revise & Resubmit	Rejected	File	Site	Contractor				
1	Fire Detection System	1	Fire Detection System	Dijlah Est. Contr. Const.	15/11/2020			X		X		X				
2	Fire Alarm Cable	1	Fire Alarm Cable	Dijlah Est. Contr. Const.	15/11/2020				X	X		X				
3																
4																
5																
6																
7																
8																

## **Annex -3-**

### **1.3 Mechanical Submittals**

3.3.1: Mech. Shop Drawings

3.3.2: Mech. Materials Submittal

### 3.3.1 Mech. Shop Drawings

Wahib Medanat Consultant Engineers

Mechanical Shop Drawings Tracking LOG																
Date:		Supervision Engineer:														
Project:		Contractor:														
Rep no.:		Site:														
No.	Drawing REF.	Revision	Drawing Name	Received From	Date Received	Status				Copies Delivered To			Specified Date for Submission	Max Date	Date of Response	Notes
						Approved	Approved as Noted	Revise & Resubmit	Rejected	File	Site	Contractor				
1	Mechanical Drawings for Hay AL Iskan Basic Mixed School- Jerash	1		Dijlah Est. Const. Contr.	17/11/2020				X							
2																
3																
4																
5																
6																
7																
8																

### 3.3.2 Mech. Materials Submittals

Wahib Medanat Consultant Engineers

Mechanical Materials Submittal Tracking LOG																
Date:		Supervision Engineer: Wahib Medanat Consultant Engineer														
Project:		Contractor: Dijlah Est. Constr. Contr.														
Rep no.:		Site:														
No.	Item Type	Revision	Item Name	Received From	Date Received	Status				Copies Delivered To			Specified Date for Submission	Max Date	Date of Response	Notes
						Approved	Approved as Noted	Rvise & Resubmit	Reject-ed	File	Site	Contr-actor				
1	sanitary fixtures		sanitary fixtures	Dijlah Establishment Const. Contr.	01/11/2020			X		X		X				
2	Radiators		Radiators	Dijlah Establishment Const. Contr.	23/11/2020			X		X		X				
3																
4																
5																
6																
7																

## **Annex -3-**

### **1.4 Civil Submittals**

3.4.1: Civil Shop Drawings

3.4.2: Civil Materials Submittal

### 3.4.1 Civil Shop Drawings

Wahib Medanat Consultant Engineers

Civil Shop Drawings Tracking LOG																
Date:		Supervision Engineer:														
Project:		Contractor:														
Rep no.:		Site:														
No.	Drawing REF.	Revision	Darwing Name	Received From	Date Received	Status				Copies Delivered To			Specified Date for Submission	Max Date	Date of Response	Notes
						Appro-ved	Appro-ved as Noted	Rvise & Resu-bmit	Reject-ed	File	Site	Contr-actor				
1	01	0	Foundation Details	Dijlah Establishment Const. Contr.- Eng.Yousef Omar	11/7/2020				X		X	X				
2	01	01	Foundation Details	Dijlah Establishment Const. Contr.- Eng.Yousef Omar	16/11/2020		X				X	X				
3	02	0	Foundation Details	Dijlah Establishment Const. Contr.- Eng.Yousef Omar	09/11/2020				X		X	X				
4	02	01	Foundation Details	Dijlah Establishment Const. Contr.- Eng.Yousef Omar	16/11/2020			X			X	X				
5	02	02	Foundation Details	Dijlah Establishment Const. Contr.- Eng.Yousef Omar	19/11/2020	X					X	X				
6	03	0	Walls and Coulumns Under S.O.G	Dijlah Establishment Const. Contr.- Eng.Yousef Omar	17/11/2020				X		X	X				
7	04	0	S.O.G and Ground Beams	Dijlah Establishment Const. Contr.- Eng.Yousef Omar	24/11/2020			X			X	X				
8	01	0	Steel reinforcement for building foundation	Dijlah Establishment Const. Contr.- Eng..Alaa Elaimat	10/31/2020			X			X	X				
9	01	1	Steel reinforcement for building foundation	Dijlah Establishment Const. Contr.- Eng..Alaa Elaimat	04/11/2020		X				X	X				
10	02	0	Excavation for building foundation	Dijlah Establishment Const. Contr.- Eng..Alaa Elaimat	01/11/2020	X					X	X				
11	03	0	Steel reinforcement for columns	Dijlah Establishment Const. Contr.- Eng..Alaa Elaimat	02/11/2020			X			X	X				
12	03	1	Steel reinforcement for columns	Dijlah Establishment Const. Contr.- Eng..Alaa Elaimat	09/11/2020				X		X	X				

### 3.4.1 Civil Shop Drawings

Wahib Medanat Consultant Engineers

No.	Drawing REF.	Revision	Drawing Name	Received From	Date Received	Status				Copies Delivered To			Specified Date for Submission	Max Date	Date of Response	Notes
						Approved	Approved as Noted	Revise & Resubmit	Rejected	File	Site	Contractor				
13	04	0	Steel reinforcement for tie beams	Dijlah Establishment Const. Contr.-Eng..Alaa Elaimat	05/11/2020			X			X	X				
14	04	1	Steel reinforcement for tie beams	Dijlah Establishment Const. Contr.-Eng..Alaa Elaimat	09/11/2020				X		X	X				
15	05	0	Certified topographic survey map (hard 'A0' and soft copy)	Dijlah Establishment Const. Contr.-Eng..Alaa Elaimat	15/11/2020						X	X				INFO
16	06	0	Steel reinforcement for boundary wall 1 part 1	Dijlah Establishment Const. Contr.-Eng..Alaa Elaimat	25/11/2020				X		X	X				
17	07	0	Steel reinforcement for Guard house (footing-columns-walls)	Dijlah Establishment Const. Contr.-Eng..Alaa Elaimat	25/11/2020				X		X	X				
18	01		Footing under Ground Level for Building	Dijlah Establishment Const. Contr.-Eng. Islaam Obeidat	28/10/2020				X		X	X	24/10/2020	05/11/2020	09/11/2020	There is no commitment to the design plane distributing steel diameters on short and long direction of footings
19	02		Coloumn from footing to end floor	Dijlah Establishment Const. Contr.-Eng. Islaam Obeidat	28/10/2020				X		X	X	24/10/2021	05/11/2021	09/11/2021	doesn't take into account the concrete cover when calculating the lengths and numbers of steel bars
20	03		S.O.G Rein. Basement Floor	Dijlah Establishment Const. Contr.-Eng. Islaam Obeidat	28/10/2020				X		X	X	24/10/2022	05/11/2022	09/11/2022	It does not detail the length of the steel bars in terms of HOCK.
21	04		S.O.G Rein. Grounf Floor	Dijlah Establishment Const. Contr.-Eng. Islaam Obeidat	28/10/2020				X		X	X	24/10/2023	05/11/2023	09/11/2023	Does not adhere to the lengths of additional steel bars signed by the designer
22	05		Strip Footing Rein.	Dijlah Establishment Const. Contr.-Eng. Islaam Obeidat	28/10/2020				X		X	X	24/10/2024	05/11/2024	09/11/2024	Doesn't take into account the concrete cover when calculating the numbers of stirrups
23	06		Core. Rein.	Dijlah Establishment Const. Contr.-Eng. Islaam Obeidat	28/10/2020				X		X	X	24/10/2025	05/11/2025	09/11/2025	There is a difference in the level of the ground floor in shop drawing column reinforcement
24	07		Shear Wall Reinf.	Dijlah Establishment Const. Contr.-Eng. Islaam Obeidat	28/10/2020				X		X	X	24/10/2026	05/11/2026	09/11/2026	Did not take into account the presence of HOCK in ground beam drawing also.
25	08		Basement Floor Slab Reinf.	Dijlah Establishment Const. Contr.-Eng. Islaam Obeidat	28/10/2020				X		X	X	24/10/2027	05/11/2027	09/11/2027	Did not adhere to the levels of design plans in boundary wall reinforcement .....etc

### 3.4.1 Civil Shop Drawings

Wahib Medanat Consultant Engineers

No.	Drawing REF.	Revision	Darwing Name	Received From	Date Received	Status				Copies Delivered To			Specified Date for Submission	Max Date	Date of Response	Notes
						Appro-ved	Appro-ved as Noted	Rvise & Resu-bmit	Reject -ed	File	Site	Contr-actor				
26	09		Boundary Wall Rein..(External Work)	Dijlah Establishment Const. Contr.-Eng. Islaam Obeidat	28/10/2020				X		X	X	24/10/2028	05/11/2028	09/11/2028	CANTEEN, WATER TANK, GUARD HOUS) IT WAS NOT INCLUDED WITH THE REST OF THE SHOPDRAWING #1
27	10		Guard House Rein.	Dijlah Establishment Const. Contr.-Eng. Islaam Obeidat	28/10/2020				X		X	X	24/10/2029	05/11/2029	09/11/2029	The Contractor is not serious to submit the Log for shop drawing submittals. (MECHANICAL)
28	11		Canteen Reinf.	Dijlah Establishment Const. Contr.-Eng. Islaam Obeidat	28/10/2020				X		X	X	24/10/2030	05/11/2030	09/11/2030	
29	12		Water Tank Reinf. (Rain Water)	Dijlah Establishment Const. Contr.-Eng. Islaam Obeidat	28/10/2020				X		X	X	24/10/2031	05/11/2031	09/11/2031	
30	13		Excavation	Dijlah Establishment Const. Contr.-Eng. Islaam Obeidat	21/11/2020						X	X	20/10/2020	22/10/2020	23/11/2020	plan separately without explaining the foundation of the external wall. 2. There are differences in the level of excavation of the external wall and the excavation of building; you must adhered to the design plans. 3. These submittals remain pending until the completion of excavation work, and the sensory examination of the laboratory and the issuance of the results of its report, these levels change in the event of an order issued by the competent laboratory to change the
31	14		Single Footing, Combined Footing and Raft Foundation	Dijlah Establishment Const. Contr.-Eng. Islaam Obeidat	24/11/2020				X		X	X	-	-	26/11/2020	Shop drawing #3 (single, combined footing and raft foundation) was resubmitted on 24.nov.2020 but my computer is disabled from 19.NOV.2020 and it is affixed by site memo #13 submitted and the contractor removed all my information from my personal computer it maintained a date 26.NOV.2020 DWG submitted with extra QTY and length for reinforcement.
32	08	0	Foundation -STR-01R0	Dijlah Establishment Const. Contr.-Eng. Alaa Eleimat	31/10/2020						X	X	22/10/2020	04/11/2020	01/11/2020	DWG does not comply with Structural. Note for Concrete Cover



### 3.4.1 Civil Shop Drawings

Wahib Medanat Consultant Engineers

No.	Drawing REF.	Revision	Darwing Name	Received From	Date Received	Status				Copies Delivered To			Specified Date for Submission	Max Date	Date of Response	Notes
						Appro-ved	Appro-ved as Noted	Rvise & Resu-bmit	Reject -ed	File	Site	Contr-actor				
33	09	1	Foundation-STR-01R1	Dijlah Establishment Const. Contr.-Eng. Alaa Eleimat	02/11/2020		X				X	X	22/10/2020	04/11/2020	04/11/2020	Note about QTY and Length of reinforcement
34	10	0	Excavation -STR02R0	Dijlah Establishment Const. Contr.-Eng. Alaa Eleimat	01/11/2020	X					X	X	20/10/2020	22/10/2020	01/11/2020	
35	11	0	Coloumns-STR03R0	Dijlah Establishment Const. Contr.-Eng. Alaa Eleimat	02/11/2020			X			X	X	29/10/2020	11/11/2020	05/11/2020	Referring to ACES Field Inspection on 5 NOV. 2020 ( status revised and resubmit ) and comment : To be updated once received the ACES report (due to discussion with ACES engineer in presence of contractor Engineers).
36	12	1	Coloumns-STR03R1	Dijlah Establishment Const. Contr.-Eng. Alaa Eleimat	09/11/2020				X		X	X	29/10/2020	11/11/2020	09/11/2020	Contractor submitted DWG based on original design and did not comply with ACES report, which he has received on 7. NOV 2020.
37	13	0	Tie Beam-STR04R0	Dijlah Establishment Const. Contr.-Eng. Alaa Eleimat	02/11/2020			X			X	X	29/10/2020	11/11/2020	05/11/2020	Referring to ACES Field Inspection on 5 NOV. 2020 ( status revised and resubmit ) and comment : To be updated once received the ACES report (due to discussion with ACES engineer in presence of contractor Engineers).
38	14	1	Tie Beam-STR04R1	Dijlah Establishment Const. Contr.-Eng. Alaa Eleimat	09/11/2020				X		X	X	29/10/2020	11/11/2020	09/11/2020	Contractor submitted DWG based on original design and did not comply with ACES report, which he has received on 7. NOV 2020

### 3.4.2 Civil Materials Submittal

Wahib Medanat Consultant Engineers

Civil Materials Submittal Tracking LOG																
Date:		Supervision Engineer: Wahib Medanat Consultant Engineer														
Project:		Contractor: Dijlah Est. Constr. Contr.														
Rep no.:		Site:														
No.	Item Type	Revision	Item Name	Received From	Date Received	Status				Copies Delivered To			Specified Date for Submission	Max Date	Date of Response	Notes
						Approved	Approved as Noted	Revise & Resubmit	Rejected	File	Site	Contractor				
1	tile adhesive		tile adhesive	Dijlah Establishment Const. Contr.	01/11/2020	X				X		X				
2	tile grout		tile grout	Dijlah Establishment Const. Contr.	01/11/2020	X				X		X				
3	cement base elastomeric waterproofing		cement base elastomeric waterproofing	Dijlah Establishment Const. Contr.	01/11/2020	X				X		X				
4	non toxic solvent free epoxy polysulfide paint		non toxic solvent free epoxy polysulfide paint	Dijlah Establishment Const. Contr.	01/11/2020	X				X		X				
5	acoustic plaster		acoustic plaster	Dijlah Establishment Const. Contr.	01/11/2020	X				X		X				
6	Grout Material		Grout Material	Dijlah Establishment Const. Contr.	15/11/2020	X				X		X				
7	Concrete Repair Material		Concrete Repair Material	Dijlah Establishment Const. Contr.	15/11/2020	X				X		X				
8	Polystyrene Boards		Polystyrene Boards	Dijlah Establishment Const. Contr.	15/11/2020	X				X		X				
9	Y (10) Mild Steel Bars		Y (10) Mild Steel Bars	Dijlah Establishment Const. Contr.	17/11/2020				X	X		X				
10																
11																

## **Annex -4-**

### **Site Visits Reports & Meetings**

4.1 Meetings

4.2 Site Visits

## **Annex -4-**

### **4.2 Site Visits**

**Site Visit on Nov 23, 2020 – Jumana Bint Abi Taleb Basic Mixed School- Amman**  
 (Refer to Table 3. Site Visits – Page 11)



SKEP III

Site Visit Report

Consultant	Wahib Medanat Consultant Engineer	Rep No.	004
Contractor	Dijlah Establishment Constr. Contracting	Tender No.	(11/2019/USAID/SKEP/3/S) Schools for a Knowledge Economy Project (SKEP) - Phase (3) Package (1, 2)
Site Name	Jumana Bint Abi Taleb Basic Mixed School- Amman	Day/ Date	Mon. 23/11/2020
Duration of Project	450 Calendar Days	Total Project Budget	8,314,983.735 JD

No.	Visitors		Remarks
1	Suhair Amarin	Project Dir.	
3	Akram Khammes	Electrical Eng.	
4	Marwan Sonna'a	Mech. Eng.	
5	Wahib Medanat	General Manager	
Visit Notes			
No.	Description		
1	Inspection of the actual status of the existing boundary wall adjacent Mabarrat Um Al Hussein Knowledge Station		
2	Checking mobilization status.		
3	Following up the excavation works.		
Attached			
<input type="checkbox"/> 1:			

1

- CC: Project Director
- 

\\Server\data\E\PROJECTS FILES\368\Site Visit Report\NOV\Site Visit Report- 004.docx  
 Form # QP SUP 01-18, Rev.1

**Site Visit on Nov 28, 2020 - Thahr Al Sarow Basic School for Boys- Jerash**  
 (Refer to Table 3. Site Visits- page 11)



SKEP III

Site Visit Report

**WAHIB  
MEDANAT**  
consultant engineers

Consultant	Wahib Medanat Consultant Engineer	Rep No.	006
Contractor	Dijlah Establishment Constr. Contracting	Tender No.	(11/2019/USAID/SKEP/3/S) Schools for a Knowledge Economy Project (SKEP) - Phase (3) Package (1, 2)
Site Name	Thahr Al Sarow Basic School for Boys- Jerash	Day/ Date	Sat. 28/11/2020
Duration of Project	450 Calendar Days	Total Project Budget	8,314,983.735 JD

No.	Visitors		Remarks
1	Suhair Amarin	Project Dir.	
2	Akram Khammes	Electrical Eng.	
3	Marwan Sonna'a	Mech. Eng.	
4	Wahib Medanat	General Manager	
Visit Notes			
No.	Description		
1	Inspection of the nature of the ground while executing the excavations.		
2	Provision of missing structural details.		
3	Checking mobilization status.		
4	Inspection of the edges of the excavation sides		
Attached			
<input type="checkbox"/> 1:			

1

- CC: Project Director
- 

\\Server\data\E\PROJECTS FILES\368\Site Visit Report\NOV\Site Visit Report- 006.docx  
 Form # QP SUP 01-18, Rev.1

**Site Visit on Nov 28, 2020 – Hay Al Iskan Basic Mixed School- Jerash**  
 (Refer to Table 3. Site Visits - page 11)



SKEP III

Site Visit Report

**WAHIB  
MEDANAT**  
consultant engineers

Consultant	Wahib Medanat Consultant Engineer	Rep No.	005
Contractor	Dijlah Establishment Constr. Contracting	Tender No.	(11/2019/USAID/SKEP/3/S) Schools for a Knowledge Economy Project (SKEP) - Phase (3) Package (1, 2)
Site Name	Hay Al Iskan Basic Mixed School- Jerash	Day/ Date	Sat. 28/11/2020
Duration of Project	450 Calendar Days	Total Project Budget	8,314,983.735 JD

No.	Visitors		Remarks
1	Suhair Amarin	Project Dir.	
3	Akram Khammes	Electrical Eng.	
4	Marwan Sonna'a	Mech. Eng.	
5	Wahib Medanat	General Manager	
Visit Notes			
No.	Description		
1	Inspection of existing cavity.		
2	Inspection of the edges of the excavation sides.		
3	Checking mobilization status.		
Attached			
<input type="checkbox"/> 1:			

1

- CC: Project Director
- 

\\Server\data\E\PROJECTS FILES\368\Site Visit Report\NOV\Site Visit Report- 005.docx  
 Form # QP SUP 01-18, Rev.1

## **Annex -5-**

### **RFIs Tracking Logs**

5.1: RFIs – Designer

5.2: RFIs – Contractor



## 5.1 RFIs - Designer

Wahib Medanat Consultant Engineers

REQUEST FOR INFORMATION TRACKING LOG						
School for Knowledge Economy Project (SKEP III)						
ISSUED BY: WAHIB MEDANAT CONSULTANT ENGINEER						
ISSUED TO: ENGICON CONSULTANT						
RFI.	Name of School	Description		Details of Designer Response		File Location
		Date		Date		
006	Thahr Al Sarow Basic School for Boys - Jumana Bint Abi Taleb Basic Mixed School - Hay Al Iskan Basic Mixed School	03/11/2020	Mechanical Works	10/11/2020	<a href="#">..\..\Package 2\RFI- FORMS\Designer reply -RFI 006.docx</a>	<a href="#">..\Package 2\RFI- FORMS\RFI-006.docx</a>
007	Hay Al Iskan Basic Mixed School-Amman	03/11/2020	Mechanical Works	10/11/2020	<a href="#">..\..\Package 2\RFI- FORMS\Designer reply- RFI 007.docx</a>	<a href="#">..\Package 2\RFI- FORMS\RFI-007.docx</a>
008	Jumana Bint Abi Taleb Basic Mixed School-Amman	03/11/2020	Mechanical Works	11/10/2020	<a href="#">..\..\Package 2\RFI- FORMS\Designer reply -RFI 008.docx</a>	<a href="#">..\Package 2\RFI- FORMS\RFI-008.docx</a>
009	Thahr Al Sarow Basic School for Boys - Jumana Bint Abi Taleb Basic Mixed School - Hay Al Iskan Basic Mixed School	25/11/2020	Structural Notes			<a href="#">..\..\Package 2\RFI- FORMS\RFI- 009.docx</a>
010	Thahr Al Sarow Basic School for Boys- Jerash	26/11/2020	Structural Notes			<a href="#">..\..\Package 2\RFI- FORMS\RFI- 010.docx</a>

## 5.2 RFIs - Contractor

Wahib Medanat Consultant Engineers

REQUEST FOR INFORMATION TRACKING LOG										
School for Knowledge Economy Project (SKEP III), Package 2										
Hay Al Iskan Basic Mixed School- Jerash										
ISSUED BY: WAHIB MEDANAT CONSULTANT ENGINEER										
ISSUED TO: DIJLAH ESTABLISHMENT CONSTR. CONTRACTING										
Thahr Al Sarow Basic school for Boys- Jerash:										
Jumana Bint Abi Taleb Basic Mixed School- Amman:										
Hay Al Iskan Basic Mixed School- Jerash:										
RFI. #	Name of School	Description		Field	Status		Details of Consultant Response		File Location	
		Date			Sent to Designer	Answered directly from Office	Date		From Site	From Office
001	Hay Al Iskan Basic Mixed School- Jerash	24/11/2020	Boundary Wall Isolation Method	Structural.					..\..\Package 2\RFI- from Contractor\Hay	
002	Hay Al Iskan Basic Mixed School- Jerash	24/11/2020	Reinforcement Steel	Structural.	X				..\..\Package 2\RFI- from Contractor\Hay	
002	Jumana Bint Abi Taleb Basic Mixed School- Amman	17/11/2020	1. Shoring System 2.Redesign of RC. Wall adjacent to shoring system	Structural.					..\..\Package 2\RFI- from Contractor\Jumana Bint Abi Taleb Basic	
003	Jumana Bint Abi Taleb Basic Mixed School- Amman	21/11/2020	Structural Details (TB.F.1) Section, Steel and Levels	Structural.	X				..\..\Package 2\RFI- from Contractor\Jum	
001	Thahr Al Sarow Basic School for Boys- Jerash	16/11/2020	New Water Tank Location / Concrete Beam	Structural.		X	27/11/2020	Sent by Email to Eng. Ala'a Eleimat (with the needed sketch to work accordingly)	..\..\Package 2\RFI- from Contractor\Tha	..\..\Package 2\RFI- from Contractor\Thahr
002	Thahr Al Sarow Basic School for Boys- Jerash	24/11/2020	Excavation for Foundation Level / ACES Inspection	Structural.	X				..\..\Package 2\RFI- from Contractor\Tha	
003	Thahr Al Sarow Basic School for Boys- Jerash	25/11/2020	Relocation of Water Tank / New Boundary Wall	Structural.					..\..\Package 2\RFI- from Contractor\Tha	

**Annex -6-**

**Lab-Tests Results**

# Lab-Tests Results Tracking Log

Wahib Medanat Consultant Engineers

LAB-TEST RESULTS TRACKING LOG															
Testing Results LOG Sheet															
Schools for Knowledge Economy Projects (SKEP III- Package 2)															
Wahib Medanat Consultant Engineers															
Dijlah Establishment Constr. Contracting															
Tender No.: 10/2019/USAID/SKEP/3/2															
Status of Test:	Pass														
	Fail														
1. Civil & Architectural Materials															
A. Earthwork Materials															
No.	School Name	Testing Lab	Description of Item	Specification Page No.	Specification Description & Summary	Description of Works to be Tested	Estimated No. of Tests to be Conducted	Sample Location	Represented Quantity	Test Date	Test Result (Pass/Fail)	Testing Report No.	Corrective Action	Test Report Location	Notes
002	Thahr Al Sarow Basic School for Boys- Jerash	Royal Scientific Society	Excavated Material	70-73	<p><b>1.04 A/B. Submittals:</b> <i>Submit full details, calculations and shop drawings showing the method of excavation, temporary protection, any other details</i></p> <p><b>Test Reports:</b></p> <p>1. Submit the following reports to Engineer from the testing laboratory:</p> <p>a. Report and Certification of granular fill and drainage fill.</p> <p>b. Test reports on borrow materials.</p> <p>c. Report on the actual unconfined compressive strength.</p> <p>d. Field density test reports.</p>	Excavated Material	1	Inside Building	3000m <sup>3</sup>	05/11/2020	Fail	21560/20/01/53	Replace the said Extracts		
					<p><b>2.01 Materials A. Structural Fill 1.</b> Refer to table on page 71 Technical Specifications (Earth Works)</p>										
					<p><b>3.01 Excavation A.</b> Refer to the General Technical Specifications for Buildings, the First Volume of Civil Works and Architectural issued by the Ministry of Public Works and Housing, Edition 2, 1996- Bill No. 2 "Excavation Works"</p>										
004	Hay Al Iskan Basic Mixed School- Jerash	Royal Scientific Society	Excavated Material	70-73	<p><b>1.04 A/B. Submittals:</b> <i>Submit full details, calculations and shop drawings showing the method of excavation, temporary protection, any other details</i></p> <p><b>Test Reports:</b></p> <p>1. Submit the following reports to Engineer from the testing laboratory:</p> <p>a. Report and Certification of granular fill and drainage fill.</p> <p>b. Test reports on borrow materials.</p> <p>c. Report on the actual unconfined compressive strength.</p> <p>d. Field density test reports.</p>	Excavated Material	1	Inside Building	8000 m	22/11/2020	Pass	22849/20/01/53			
					<p><b>2.01 Materials A. Structural Fill 1.</b> Refer to table on page 71 Technical Specifications (Earth Works)</p>										
					<p><b>3.01 Excavation A.</b> Refer to the General Technical Specifications for Buildings, the First Volume of Civil Works and Architectural issued by the Ministry of Public Works and Housing, Edition 2, 1996- Bill No. 2 "Excavation Works"</p>										

# Lab-Tests Results Tracking Log

Wahib Medanat Consultant Engineers

No.	School Name	Testing Lab	Description of Item	Specification Page No.	Specification Description & Summary	Description of Works to be Tested	Estimated No. of Tests to be Conducted	Sample Location	Represented Quantity	Test Date	Test Result (Pass/Fail)	Testing Report No.	Corrective Action	Test Report Location	Notes
			Backfilling Material	36	<b>Backfilling Excavations</b> <i>A. After compaction of granular bed and surround, the trench shall be backfilled using selected excavated material free from all rocks, large hard objects and builder's debris of greater than 40mm, and shall be in layers of 150mm, each fully compacted over the full width of the trench. Power rammers and vibrators shall be used to compact backfilling when the cover over the crown of the pipe exceeds 0.5 meters.</i>										

# Lab-Tests Results Tracking Log

Wahib Medanat Consultant Engineers

B. Concrete Works															
No.	School Name	Testing Lab	Description of Item	Specification Page No.	Specification Description & Summary	Description of Works to be Tested	Estimated No. of Tests to be Conducted	Sample Location	Represented Quantity	Test Date	Test Result (Pass/Fail)	Testing Report No.	Corrective Action	Test Report Location	Notes
			Concrete Cubes	107/112-113	<p><b>SOURCE QUALITY CONTROL</b> A. Submit 3 certified copies of mill test report of supplied concrete reinforcing, indicating physical and chemical analysis.</p> <p><b>QUALITY ASSURANCE</b> A. Refer to the General Technical Specifications for Buildings, the First Volume of Civil Works and Architectural issued by the Ministry of Public Works and Housing, Edition 2, 1996- Bill No.3" Concrete Works"</p> <p><b>C. Cyclopean Concrete:</b> Cyclopean concrete shall consist of concrete with compressive strength 200 kg/cm2 containing large embedded stones.</p>										
003	Thahr Al Sarow Basic School for Boys- Jerash	Royal Scientific Society	Steel Reinforcement	107-108	<p><b>1.25.2.1 Reinforcing:</b> Deformed High Strength Steel 420 Mpa.</p> <p><b>1.25.2.2 Quality Requirements:</b> Steel Reinforcement shall be hot rolled, high strength and high bond. Grade 420 Mpa complying with requirements of ACI and Jordanian National Building Code.</p>	Steel Bars for Concrete Reinforcement (Steel bar: $\Phi 10+12+14+16+18+20+25$ )	15	-	225 m <sup>3</sup>	09/11/2020	Fail	53/01/20/21562/1	Removal of Delivered Steel Bars		
001	Thahr Al Sarow Basic School for Boys- Jerash	International Center for Geotechnical Studies	Steel Reinforcement	107-108	<p><b>1.25.2.1 Reinforcing:</b> Deformed High Strength Steel 420 Mpa.</p> <p><b>1.25.2.2 Quality Requirements:</b> Steel Reinforcement shall be hot rolled, high strength and high bond. Grade 420 Mpa complying with requirements of ACI and Jordanian National Building Code.</p>	Steel Bars for Concrete Reinforcement (Steel bar: $\Phi 10+12+14+16+18+20+25$ )	15	-	-	02/11/2020	Pass	2020-RM-001660			

# Lab-Tests Results Tracking Log

Wahib Medanat Consultant Engineers

C. Masonary Works															
No.	School Name	Testing Lab	Description of Item	Specification Page No.	Specification Description & Summary	Description of Works to be Tested	Estimated No. of Tests to be Conducted	Sample Location	Represented Quantity	Test Date	Test Result (Pass/Fail)	Testing Report No.	Corrective Action	Test Report Location	Notes
			Building Stone	123 /128	<b>ASTM C 97</b> <i>Test methods for absorption and bulk specific gravity of natural building stone.</i>  <b>A.01 FIELD QUALITY CONTROL</b> 1. Test mortar and grout in accordance with specification specified in this section.										
			Blockwork	122	<b>3.02:</b> A. Refer to General Technical Specifications for Buildings, the First Volume of Civil Works and Architectural issued by the Ministry of Public Works and Housing, Edition 2, 1996- Bill No.6" Masonry Works"										
			Ribs Work	122	<b>3.02:</b> A. Refer to General Technical Specifications for Buildings, the First Volume of Civil Works and Architectural issued by the Ministry of Public Works and Housing, Edition 2, 1996- Bill No.6" Masonry Works"										
			Stone Sills	123 /128	<b>ASTM C 97</b> <i>Test methods for absorption and bulk specific gravity of natural building stone.</i>  <b>A.01 FIELD QUALITY CONTROL</b> 1. Test mortar and grout in accordance with specification specified in this section.										

# Lab-Tests Results Tracking Log

Wahib Medanat Consultant Engineers

D. Tiles Works															
No.	School Name	Testing Lab	Description of Item	Specification Page No.	Specification Description & Summary	Description of Works to be Tested	Estimated No. of Tests to be Conducted	Sample Location	Represented Quantity	Test Date	Test Result (Pass/Fail)	Testing Report No.	Corrective Action	Test Report Location	Notes
			Terrazo Tiles	227	<p><b>1.04:</b> ANSI A118-10, 2099 – Load bearing, Bonded, Waterproof Membranes for Thin-set Ceramic Tile and Dimensional Stone Insulation. ANSI A108-1, A-2099 – Specifications for Installation of Ceramic Tile in the Wet-Set Method with Portland cement Mortar. ANSI A108-1, B-2099 – Specifications for Installation of Ceramic Tile on a Cured Portland Cement Mortar Setting Bed with Dry-Set or Latex Portland Cement Mortar. Refer to Section 09300 - Page 227- References</p>										
			Ceramic Tiles	227	<p><b>1.04:</b> ANSI A118-10, 2099 – Load bearing, Bonded, Waterproof Membranes for Thin-set Ceramic Tile and Dimensional Stone Insulation. ANSI A108-1, A-2099 – Specifications for Installation of Ceramic Tile in the Wet-Set Method with Portland cement Mortar. ANSI A108-1, B-2099 – Specifications for Installation of Ceramic Tile on a Cured Portland Cement Mortar Setting Bed with Dry-Set or Latex Portland Cement Mortar. Refer to Section 09300 - Page 227- References</p>										
			Porcelain Tiles	227	<p><b>1.04:</b> ANSI A118-10, 2099 – Load bearing, Bonded, Waterproof Membranes for Thin-set Ceramic Tile and Dimensional Stone Insulation. ANSI A108-1, A-2099 – Specifications for Installation of Ceramic Tile in the Wet-Set Method with Portland cement Mortar. ANSI A108-1, B-2099 – Specifications for Installation of Ceramic Tile on a Cured Portland Cement Mortar Setting Bed with Dry-Set or Latex Portland Cement Mortar. Refer to Section 09300 - Page 227- References</p>										
			Cement Tiles	86	<p><b>1.02:</b> ASTM C936 Specification for Solid Concrete Interlocking Paving Units.</p>										
			Interlock Tiles	227	<p><b>1.04:</b> ANSI A118-10, 2099 – Load bearing, Bonded, Waterproof Membranes for Thin-set Ceramic Tile and Dimensional Stone Insulation. ANSI A108-1, A-2099 – Specifications for Installation of Ceramic Tile in the Wet-Set Method with Portland cement Mortar. ANSI A108-1, B-2099 – Specifications for Installation of Ceramic Tile on a Cured Portland Cement Mortar Setting Bed with Dry-Set or Latex Portland Cement Mortar. Refer to Section 09300 - Page 227- References</p>										
			Marble sills	227	<p><b>1.04:</b> ANSI A118-10, 2099 – Load bearing, Bonded, Waterproof Membranes for Thin-set Ceramic Tile and Dimensional Stone Insulation. ANSI A108-1, A-2099 – Specifications for Installation of Ceramic Tile in the Wet-Set Method with Portland cement Mortar. ANSI A108-1, B-2099 – Specifications for Installation of Ceramic Tile on a Cured Portland Cement Mortar Setting Bed with Dry-Set or Latex Portland Cement Mortar. Refer to Section 09300 - Page 227- References</p>										
			Granite Sills	227	<p><b>1.04:</b> ANSI A118-10, 2099 – Load bearing, Bonded, Waterproof Membranes for Thin-set Ceramic Tile and Dimensional Stone Insulation. ANSI A108-1, A-2099 – Specifications for Installation of Ceramic Tile in the Wet-Set Method with Portland cement Mortar. ANSI A108-1, B-2099 – Specifications for Installation of Ceramic Tile on a Cured Portland Cement Mortar Setting Bed with Dry-Set or Latex Portland Cement Mortar. Refer to Section 09300 - Page 227- References</p>										



# Lab-Tests Results Tracking Log

Wahib Medanat Consultant Engineers

## E. Aluminum Sections

No.	School Name	Testing Lab	Description of Item	Specification Page No.	Specification Description & Summary	Description of Works to be Tested	Estimated No. of Tests to be Conducted	Sample Location	Represented Quantity	Test Date	Test Result (Pass/Fail)	Testing Report No.	Corrective Action	Test Report Location	Notes
				130-132	3. AWS D 1.2 – Aluminum K. Extrude shapes ad tubes: (Aluminum) to ASTM B 221, 6061-T6, 6205-75										
				130-132	3. AWS D 1.2 – Aluminum K. Extrude shapes ad tubes: (Aluminum) to ASTM B 221, 6061-T6, 6205-76										
				130-133	3. AWS D 1.2 – Aluminum K. Extrude shapes ad tubes: (Aluminum) to ASTM B 221, 6061-T6, 6205-77										

## F. Asphalt Layers

No.	School Name	Testing Lab	Description of Item	Specification Page No.	Specification Description & Summary	Description of Works to be Tested	Estimated No. of Tests to be Conducted	Sample Location	Represented Quantity	Test Date	Test Result (Pass/Fail)	Testing Report No.	Corrective Action	Test Report Location	Notes
				77	2.02 SOURCE QUALITY CONTROL A. Tests: A sample of material delivered to the project shall be taken for each 300 tons (270 metric tons) placed or each day's placement, whichever is greater, and tested for gradation and moisture density relationship  3.03 FIELD QUALITY CONTROL: b. Testing for compaction density ration under asphalt pavements and under concrete SOG.										
				77	2.02 SOURCE QUALITY CONTROL A. Tests: A sample of material delivered to the project shall be taken for each 300 tons (270 metric tons) placed or each day's placement, whichever is greater, and tested for gradation and moisture density relationship  3.03 FIELD QUALITY CONTROL: b. Testing for compaction density ration under asphalt pavements and under concrete SOG.										
				77	2.02 SOURCE QUALITY CONTROL A. Tests: A sample of material delivered to the project shall be taken for each 300 tons (270 metric tons) placed or each day's placement, whichever is greater, and tested for gradation and moisture density relationship  3.03 FIELD QUALITY CONTROL: b. Testing for compaction density ration under asphalt pavements and under concrete SOG.										

# Lab-Tests Results Tracking Log

Wahib Medanat Consultant Engineers

G. Asphalt Membranes															
No.	School Name	Testing Lab	Description of Item	Specification Page No.	Specification Description & Summary	Description of Works to be Tested	Estimated No. of Tests to be Conducted	Sample Location	Represented Quantity	Test Date	Test Result (Pass/Fail)	Testing Report No.	Corrective Action	Test Report Location	Notes
				77	<b>2.02 SOURCE QUALITY CONTROL</b> A. Tests: A sample of material delivered to the project shall be taken for each 300 tons (270 metric tons) placed or each day's placement, whichever is greater, and tested for gradation and moisture density relationship  <b>3.03 FIELD QUALITY CONTROL:</b> b. Testing for compaction density ration under asphalt pavements and under concrete SOG.										
				77	<b>2.02 SOURCE QUALITY CONTROL</b> A. Tests: A sample of material delivered to the project shall be taken for each 300 tons (270 metric tons) placed or each day's placement, whichever is greater, and tested for gradation and moisture density relationship  <b>3.03 FIELD QUALITY CONTROL:</b> b. Testing for compaction density ration under asphalt pavements and under concrete SOG.										
				77	<b>2.02 SOURCE QUALITY CONTROL</b> A. Tests: A sample of material delivered to the project shall be taken for each 300 tons (270 metric tons) placed or each day's placement, whichever is greater, and tested for gradation and moisture density relationship  <b>3.03 FIELD QUALITY CONTROL:</b> b. Testing for compaction density ration under asphalt pavements and under concrete SOG.										
H. Extruded Polystyrene															
No.	School Name	Testing Lab	Description of Item	Specification Page No.	Specification Description & Summary	Description of Works to be Tested	Estimated No. of Tests to be Conducted	Sample Location	Represented Quantity	Test Date	Test Result (Pass/Fail)	Testing Report No.	Corrective Action	Test Report Location	Notes
				173-174	<b>1.04 SYSTEM DESCRIPTION</b> Refer to <b>1.02 REFERENCES</b> A. The insulation shall have a minimum K value of 0.027 W/mat 10oC to ASTM C518. B. The insulation shall be vermin proof and contain sufficient fire inhibitors to achieve a class 1 resistance to surface spread of flame when tested. C. The insulation shall be water proof and vapor proof . D. The insulation shall have a minimum compressive strength of 300 Kpa (3kg/cm2 ) when tested to ASTM D1621.										
				173-174	<b>1.04 SYSTEM DESCRIPTION</b> Refer to <b>1.02 REFERENCES</b> A. The insulation shall have a minimum K value of 0.027 W/mat 10oC to ASTM C518. B. The insulation shall be vermin proof and contain sufficient fire inhibitors to achieve a class 1 resistance to surface spread of flame when tested. C. The insulation shall be water proof and vapor proof . D. The insulation shall have a minimum compressive strength of 300 Kpa (3kg/cm2 ) when tested to ASTM D1621.										
				173-175	<b>1.04 SYSTEM DESCRIPTION</b> Refer to <b>1.02 REFERENCES</b> A. The insulation shall have a minimum K value of 0.027 W/mat 10oC to ASTM C518. B. The insulation shall be vermin proof and contain sufficient fire inhibitors to achieve a class 1 resistance to surface spread of flame when tested. C. The insulation shall be water proof and vapor proof . D. The insulation shall have a minimum compressive strength of 300 Kpa (3kg/cm2 ) when tested to ASTM D1621.										

# Lab-Tests Results Tracking Log

Wahib Medanat Consultant Engineers

I. Painting															
No.	School Name	Testing Lab	Description of Item	Specification Page No.	Specification Description & Summary	Description of Works to be Tested	Estimated No. of Tests to be Conducted	Sample Location	Represented Quantity	Test Date	Test Result (Pass/Fail)	Testing Report No.	Corrective Action	Test Report Location	Notes
				255-266	<b>1.03 REFERENCES</b> A. American National Standard Institute (ANSI). 1. ANSI A13.1 Scheme for the Identification of Piping Systems. 2. ANSI Z535-1 Safety Color Code. B. American Standard for Testing and Materials (ASTM). Refer to <b>1.03 REFERENCES - Page 255-266</b>										
				255-267	<b>1.03 REFERENCES</b> A. American National Standard Institute (ANSI). 1. ANSI A13.1 Scheme for the Identification of Piping Systems. 2. ANSI Z535-1 Safety Color Code. B. American Standard for Testing and Materials (ASTM). Refer to <b>1.03 REFERENCES - Page 255-266</b>										
				255-268	<b>1.03 REFERENCES</b> A. American National Standard Institute (ANSI). 1. ANSI A13.1 Scheme for the Identification of Piping Systems. 2. ANSI Z535-1 Safety Color Code. B. American Standard for Testing and Materials (ASTM). Refer to <b>1.03 REFERENCES - Page 255-266</b>										

# Lab-Tests Results Tracking Log

Wahib Medanat Consultant Engineers

2. Mechanical Materials															
A. Seamless Black Steel Pipes															
No.	School Name	Testing Lab	Description of Item	Specification Page No.	Specification Description & Summary	Description of Works to be Tested	Estimated No. of Tests to be Conducted	Sample Location	Represented Quantity	Test Date	Test Result (Pass/Fail)	Testing Report No.	Corrective Action	Test Report Location	Notes
B. CPVC Pipes															
No.	School Name	Testing Lab	Description of Item	Specification Page No.	Specification Description & Summary	Description of Works to be Tested	Estimated No. of Tests to be Conducted	Sample Location	Represented Quantity	Test Date	Test Result (Pass/Fail)	Testing Report No.	Corrective Action	Test Report Location	Notes
C. UPVC Pipes															
No.	School Name	Testing Lab	Description of Item	Specification Page No.	Specification Description & Summary	Description of Works to be Tested	Estimated No. of Tests to be Conducted	Sample Location	Represented Quantity	Test Date	Test Result (Pass/Fail)	Testing Report No.	Corrective Action	Test Report Location	Notes

# Lab-Tests Results Tracking Log

Wahib Medanat Consultant Engineers

**D. P.P.R Pipes**

No.	School Name	Testing Lab	Description of Item	Specification Page No.	Specification Description & Summary	Description of Works to be Tested	Estimated No. of Tests to be Conducted	Sample Location	Represented Quantity	Test Date	Test Result (Pass/Fail)	Testing Report No.	Corrective Action	Test Report Location	Notes

**E. First Test for Boiler**

No.	School Name	Testing Lab	Description of Item	Specification Page No.	Specification Description & Summary	Description of Works to be Tested	Estimated No. of Tests to be Conducted	Sample Location	Represented Quantity	Test Date	Test Result (Pass/Fail)	Testing Report No.	Corrective Action	Test Report Location	Notes

# Lab-Tests Results Tracking Log

Wahib Medanat Consultant Engineers

3. Electrical Materials															
A. Lighting Fixtures															
No.	School Name	Testing Lab	Description of Item	Specification Page No.	Specification Description & Summary	Description of Works to be Tested	Estimated No. of Tests to be Conducted	Sample Location	Represented Quantity	Test Date	Test Result (Pass/Fail)	Testing Report No.	Corrective Action	Test Report Location	Notes
B. Power Cables															
No.	School Name	Testing Lab	Description of Item	Specification Page No.	Specification Description & Summary	Description of Works to be Tested	Estimated No. of Tests to be Conducted	Sample Location	Represented Quantity	Test Date	Test Result (Pass/Fail)	Testing Report No.	Corrective Action	Test Report Location	Notes

# Lab-Tests Results Tracking Log

Wahib Medanat Consultant Engineers

**C. Wires**

No.	School Name	Testing Lab	Description of Item	Specification Page No.	Specification Description & Summary	Description of Works to be Tested	Estimated No. of Tests to be Conducted	Sample Location	Represented Quantity	Test Date	Test Result (Pass/Fail)	Testing Report No.	Corrective Action	Test Report Location	Notes

**D. PVC Conduits**

No.	School Name	Testing Lab	Description of Item	Specification Page No.	Specification Description & Summary	Description of Works to be Tested	Estimated No. of Tests to be Conducted	Sample Location	Represented Quantity	Test Date	Test Result (Pass/Fail)	Testing Report No.	Corrective Action	Test Report Location	Notes

## **Annex -7-**

### **Mobilization Tracking Log**



# Mobilization Tracking Log

Wahib Medanat Consultant Engineers

Mobilization Tracking Log- SKEP III - Package 2 Schools- Updated on 26/11/2020								
Contractor: Dijlah Establishment Constr. Contracting								
Contract item no. #	Description	Specified Time for Submission	Max. Date	Contractor Action	Date	Consultant Action	Date	Notes
#01500	Temporary Electrical Distribution System	Throughout the Works	-	Provided	-	Done	-	Ready
#21.2 #22.1 #23.2	Insurance Policy	Prior to the Commencement Date	20/10/2020	Comply	19/10/2020	Done	-	Ready
#98	Risk Management Plan	Prior to Commencement	20/10/2020	Comply	04/10/2020	Done	11/10/2020	Ready
#19.1/6-99	Safety Plan	Within 14 Days of the Commencement Date	04/11/2020	Comply	27/09/2020	Done	08/10/2020	Ready
#97	Quality Plan	Prior to the Commencement Date	20/10/2020	Comply	27/09/2020	Done	11/10/2020	Ready
#8.1	Facility Unit for Workers	Prior to the Commencement Date	20/10/2020	Comply	04/10/2020	Done	14/10/2020	Ready
#8.1	Provision of Safe Drinking Water	Prior to the Commencement Date	20/10/2020	Comply	-	-	-	Ready
#19.1/6-97	Waste Management Plan	Prior to the Commencement Date	20/10/2020	Comply	-	Done	-	Ready
#8.1	Communication With Jerash Municipality Regarding Construction Waste	Prior to the Commencement Date	-	Done	-	Done	-	-
#8.1	Communication with Greater Amman Municipality Regarding Construction Waste	Prior to the Commencement Date	-	Done	-	Done	-	-
#8.1	Submission of Social Security Payment of Employees	-	-	Not Submitted	-	-	-	Contractor is Requested
#8.1	Permits for Construction Works from Municipalities	Prior to the Comencement Date	-	Available	-	Done	-	-
#8.1	Mock-Up Rooms	Within 4-Months after Comencement	21/02/2020	Not Done	-	-	-	Location stated on Site Plan by Contractor
#14.1	Work Schedule	Within 28-Days After Receipt of Letter of Acceptance	03/06/2020	Done	11/10/2020	Done	-	Approved

# Mobilization Tracking Log

Wahib Medanat Consultant Engineers

Contract item no. #	Description	Specified Time for Submission	Max. Date	Contractor Action	Date	Consultant Action	Date	Notes
#14.3	Cash Flow	Within 30-Days After Receipt of Letter of Acceptance	03/06/2021	Done	11/10/2020	Done	-	Approved
#01330	Major Products	Within 30-Days of the Notice to Proceed	21/10/2020	Slow Progress	-	Reminding Contractor	-	The Contractor started to submit Material Requests
#15.1	Contractor's Staff	Prior to Commencement	-	Done	14/10/2020	Done	-	All Recommended
#01500	Temporary Offices	Prior to Commencement	-	Comply	-	Done	-	-
#01500	Computers & Internet, Mobiles	Prior to Commencement	-	Provided	-	-	-	Original Software not available ** The Contractor promised to provide the original copies in very short time
#01500	Sewage System for the Temporary Offices	Prior to Commencement	-	Provided	-	-	-	Available
#01500	Parking (4 Engineers) (2 Visitors) Shaded	Prior to Commencement	-	Not Prepared	-	-	-	Not Provided
#01500	Water for Sanitary Facilities	Prior to Commencement	-	Provided	-	-	-	Provided
	Safety Signs	Prior to Commencement	-	Provided	-	-	-	Provided
	Project Signs	Prior to Commencement	-	Provided	-	-	-	Available

## **Annex -8-**

### **Non-Conformance Reports Tracking Log**

# Non-Conformance Reports Tracking Log (HSE)

Wahib Medanat Consultant Engineers

NON-CONFORMANCE REPORT TRACKING LOG (HSE)								
Schools for Knowledge Economy Project (SKEP III), Package 2								
Wahib Medanat Consultant Engineer								
Health, Safety & Environment								
Date:			Supervision Engineer:					
Project:			Contractor:					
Rep. no.:			Site:					
	Thahr Al Sarow Basic school for Boys-Jerash:							
	Jumana Bint Abi Taleb Basic Mixed School-Amman:							
	Hay Al Iskan Basic Mixed School- Jerash:							
NCR NO.	Name of School	Date of NCR	Date of Response	Description of NCR	Corrective action Required	Contractor Action	File Location	Closed Date
1	Thahr Al Sarow Basic School for Boys- Jerash	28/11/2020		Protecting the excavation and the caravans from their current location to avoid occurrence of landslides due to unstable weather conditions	Shoring According to the contract requirments, moving the caravans to safe places		..\..\Package 2\Safety\Non-Conformance Reports\Non-Conformance Report - Thahr Al Sarow Biscic Boys - Jerash (2).xlsx	
2	Hay Al Iskan Basic Mixed School- Jerash	19/11/2020		The presence of unsafe excavations at the work site with electrical and communication poles subject to fall as per the attached Site Memo and pictures taken from site.	Protect the fossil and remove the communication pole		..\..\Package 2\Safety\Non-Conformance Reports\Non-Conformance Report - Hay Al Iskan.xlsx	

## **Annex -9-**

### **Materials Submittals Summary**

9.1: Architectural Submittals

9.2: Electrical Submittals

9.3: Mechanical Submittals

# Architectural Submittals Summary

Wahib Medanat Consultant Engineers

MATERIAL SUBMITTALS					
<b>Architectural Submitted Material</b>					
Schools for Knowledge Economy Projects (SKEP III) - Package 2					
<b>Wahib Medanat Consultant Engineer</b>					
Item No.	Description	Vendor List	Submitted Material	No. of Rev	Engineer Response
<b>4.2 Natural Stone works</b>					
4.2	Stone Works	Marbeltone	YES	Rev.02	The supplier is approved, contractor has been requested to submit samples and shop drawings for approval.
		Quality for marble & granite			
		Nassar group			
		Al-Jabary Marble			
		Amer Al-Khatib for stone			
		Or equivalent			
4.2.2 4.2.8 4.2.9- 4.2.12	Granite tile for staircases Granite coping for internal walls Granite wall tiles Granite tiles for platform Granite for drinking fountain Granite counter top	Marbeltone	NO	NO	
		Quality for marble & granite			
		Nassar group			
		Al-Jabary Marble			
		Amer Al-Khatib for stone			
		Or equivalent			
4.2.4	Ajloun marble	Not Mentioned	NO	NO	
<b>5 Metals</b>					
5.1.1 + 5.1.2	Steel windows screens	Not Mentioned	NO	NO	
5.1.3	Steel cover for under ground water tank	Not Mentioned	NO	NO	
5.1.4	3mm louver steel plate powder coated for under ground water tank	Not Mentioned	NO	NO	
5.1.5	Access panel for under ground water tank	Not Mentioned	NO	NO	
5.1.6	Flag pole	Not Mentioned	NO	NO	
5.1.7	Flag pole on top of roof	Not Mentioned	NO	NO	
5.1.8	Outdoor Shading	Not Mentioned	NO	NO	
5.1.9	1mm thick aluminum angle/tile trim-copping above porcelain and granite wall cladding	Not Mentioned	NO	NO	

Item No.	Description	Vendor List	Submitted Material	No. of Rev	Engineer Response
5.2.1	Steel ladder at top of roof	Not Mentioned	NO	NO	
5.2.2	Stainless steel ladder for under ground water tank and internal water tank	Not Mentioned	NO	NO	
5.2.3	Galvanized steel ladder for under ground water tank and internal pump room	Not Mentioned	NO	NO	
5.3.1	Handrails and Railing for internal stairs	Not Mentioned	NO	NO	
5.3.2	Wall mounted handrail to internal stairs and to internal disabled ramp.	Not Mentioned	NO	NO	
5.3.3	Steel handrail at top of site walls, planters and wherever required	Not Mentioned	NO	NO	
5.3.4	Wall mounted handrail at disabled ramp.	Not Mentioned	NO	NO	
5.3.5	Powder coated steel protection rail at entrance main gate	Not Mentioned	NO	NO	
<b>6.1 Custom Cabinets</b>					
6.1.1	Cabinets in kitchenette, canteen, first aid room, child care room, KG classroom, teacher center, and wherever required	Not Mentioned	NO	NO	
6.2	Wooden Seats	Not Mentioned	NO	NO	
<b>8. DOORS &amp; WINDOWS</b>					
8.1	Steel Doors and Frames	Not Mentioned	NO	NO	
8.2	Wood Doors and fire rated doors	Not Mentioned	YES- Contractor submitted only door accessories	REV 1	Revise and resubmit
8.3.1 8.3.2	Aluminum Windows, Aluminum doors and curtain wall	curtain wall: Petra aluminum Co. AL-FAQEER INDUSTRIAL Co. Raghad Kalbouneh & Partners Co- Tichnical Aluminum &Glass Or equivalent Decorative glass: Forms+ Surfaces Mansour Glass Or equivalent	YES	REV 1	Revise and resubmit

Item No.	Description	Vendor List	Submitted Material	No. of Rev	Engineer Response
9. FINISHING	FINISHING				
9.1	Portland Cement Plaster & Portland Cement Colored	Not Mentioned	NO	NO	
9.1.3	Colored plaster	Not Mentioned	NO	NO	
		Seasons	NO	NO	
9.2.1.1	Porcelain floors tiles	Marrazi tiles/ salah Shihadeh			
		Nabluse and Amad	NO	NO	
		Or equivalent			
		Seasons			
9.2.1.2	Ceramic floors tiles	Marrazi tiles/ salah Shihadeh	NO	NO	
		Nabluse and Amad			
		Or equivalent			
9.2.1.3	Carpet tiles over terrazzo	Not Mentioned	NO	NO	
9.2.1.4	Terrazzo tiles	Not Mentioned	NO	NO	
		Seasons			
9.2.2.1	Glossy ceramic wall tiles	Marrazi tiles/ salah Shihadeh	NO	NO	
		Nabluse and Amad			
		Or equivalent			
		Seasons			
9.2.2.2	Porcelain wall tiles	Marrazi tiles/ salah Shihadeh	NO	NO	
		Nabluse and Amad			
		Or equivalent			
9.2.3	Floor Coating (Polyster Polyurethane) for playground	Not Mentioned	NO	NO	
		Jotun			
		Dulux			
		National Paints			
		Sipes			
9.3.1 9.3.2	Emulsion paint Internal vinyl silk emulsion paint	Or equivalent	YES	REV 1	SUPPLIER IS APPROVED- contractor has been requested to submit painting colors after submitting the required tiles samples as one color scheme
9.3.3	Non toxic solvent free epoxy polysulfide paint	Not Mentioned	NO	NO	
		The Knauf Group			
9.4	Acoustical Suspended Ceilings	AMF- Ceilings Systems	NO	NO	
		Armstrong- Ceiling Systems			
		Or equivalent			



Item No.	Description	Vendor List	Submitted Material	No. of Rev	Engineer Response
10- SPECIALITIES					
10.1	Toilet, Bath and Laundry Specialties (Toilet Accessories and Mirrors)	Bobbrick	NO	NO	
		Inda			
		Sonia			
10.2	Rubber Floor Mat	Not Mentioned	NO	NO	
11- EQUIPMENT					
11.1	Playground Equipments	Not Mentioned	NO	NO	
11.2	Laboratory Furnishing	Maani	NO	NO	
		Protech			
11.2.14	Coat Hanger	Not Mentioned	NO	NO	

# Electrical Submittals Summary

Wahib Medanat Consultant Engineers

MATERIAL SUBMITTALS					
Electrical Submitted Material					
Schools for Knowledge Economy Projects (SKEP III) - Package 2					
Wahib Medanat Consultant Engineer					
Item No.	Description	Vendor List	Submitted Material	No. of Rev	Engineer Response
16.1	Main Distribution Boards (MDB)	- Schneider (Europe) - Legrand (Europe) - ABB (Europe) - Eaton (Europe) - GE (USA) - Hager (Europe)	No	-	-
16.2	Motor Control Centers (MCC)	- Schneider (Europe) - Legrand (Europe) - ABB (Europe) - Eaton (Europe) - GE (USA) - Hager (Europe)	No	-	-
16.3	Uninterruptible Power Supply (UPS)	- APC (Europe) - Eaton (Europe) - GE (USA) - Legrand (France) - G-Tec (Italy) - ABB (Europe)	No	-	-
16.4	Complete Earthing System	- Furse (UK) - Wallis (UK) -Kingsmill (UK)	Yes	2	Kingsmill (UK)
16.5	Distribution Boards	- Schneider (Europe) - Legrand (Europe) - ABB (Europe) - Eaton (Europe) - GE (USA) - Hager (Europe)	Yes	3	Revise and resubmit
16.6	Main and External Power Cables	- Jordan New Cable Co (Jordan) - Cabelco (Jordan) - Gulf Cable (Jordan) - Ducab (UAE) - Tekab (UAE) - Top Cable (Spain)	Yes	1	Approved (Cabelco)

Item No.	Description	Vendor List	Submitted Material	No. of Rev	Engineer Response
16.7	Feeding Power Cables	- Jordan New Cable Co (Jordan) - Cabelco (Jordan) - Gulf Cable (Jordan) - Ducab (UAE) - Tekab (UAE) - Top Cable (Spain)	Yes	1	Approved (Cabelco)
16.8	Wiring Devices and Socket Outlets	- MK (Europe) - MEM (Europe) - Legrand (Europe)	Yes	1	Not Approved
16.9	Disconnect Switch Isolator	- MK (Europe) - ABB (Europe) - Eaton (Europe) - Legrand (Europe)	Yes	1	Not Approved
-	PVC Conduit	- Egatube (UK) - Decoduct (UAE) - Marshall Tufflex (UK) - Gulf Plastic (Jordan)	Yes	2	Approved (Gulf Plastic)
16.12	Lighting Fixtures	- Thorn (UK) - iGuzzini (Italy) - Luce (Italy) - Targetti (Italy) - Philips (Netherlands) - EAE (Turkey) - GE (USA) - Zumtobel (Europe) - Leviton (USA) - R2B (Germany)	No	-	-
16.13	Lightin Presence I.R Sensor (PIR)	- MK (Europe) - MEM (Europe) - Legrand (Europe)	No	-	-
16.14	Wall Fans	- Matthews (USA)	No	-	-
16.15	External Lightning Distribution Boards	- Schneider (Europe) - Legrand (Europe) - ABB (Europe) - Eaton (Europe) - GE (USA) - Hager (Europe)	No	-	-
16.16	External Lightning Poles	- Mitas (Turkey) - Babtain (KSA)	No	-	-

Item No.	Description	Vendor List	Submitted Material	No. of Rev	Engineer Response
16.17	Cables for External Lightning Poles	- Jordan New Cable Co (Jordan) - Cabelco (Jordan) - Gulf Cable (Jordan) - Ducab (UAE) - Tekab (UAE) - Top Cable (Spain)	Yes	1	Approved (Cabelco)
16.18	Fire Detection System	- Simplex (USA/Canda) - Notifier (USA) - EDWARD (UK) - Secutron (Canada) - Gent (UK)	Yes	1	Revise and resubmit
16.19	Structure Cabling System	- Leviton (USA) - AT&T (USA) - Legrand (France) - Digitus (Germany) - R&M (USA)	No	-	-
16.20	Private Automatic Branch Exchange (PABX)	- Siemens - Ericsson - PanaSonic	No	-	-
16.21	Program Change Bell System	-	No	-	-
16.22	Audio/Video and Public Address System	- Tao (Japan) - ATEIS (Switzerland) - Bosch (Germany) - Paso (Italy) - Inter- M (Korea)	No	-	-
	Projector	- Sony - Sanyo - Hitachi	No	-	-
16.23	IP Based CCTV System	- Bosch (Germany) - Pelco (USA) - Axis (Denmark) - Samsung (Korea) - GE (USA)	No	-	-
16.24	Intrusion System	- Optima - Bosch - Honeywell - Guardall	No	-	-
16.25	Cable Tray	- Davis (UK) - Swifts (UK) - OBO Bettermann (Germany) - Cablofil (France)	No	-	-

Item No.	Description	Vendor List	Submitted Material	No. of Rev	Engineer Response
16.28	Lightning Protection System	- Furse (UK) - Wallis (UK) -Kingsmill (UK)	Yes	2	Approved as Noted (Kingsmill)
14	Elevator	- Kone (Italy) - Mitsubishi (Japan) - ThyssenKrupp (germany) - Schneider (France) - OTIS (USA) - SANYO (Japan)	Yes	1	Not Approved

# Mechanical Submittals Summary

Wahib Medanat Consultant Engineers

MATERIAL SUBMITTALS					
Mechanical Submitted Material					
Schools for Knowledge Economy Projects (SKEP III) - Package 2					
Wahib Medanat Consultant Engineer					
Item No.	Description	Vendor List	Submitted Material	No. of Rev	Engineer Response
15.37 & 15.44	UPVC Pipes and Fittings	ADASANI	UPVC pipes had been submitted only contractor should submit UPVC Fittings	REV 1	APPROVED AS NOTED
		NIC			
		TERRAIN			
		MARLEY			
		HEPWORTH			
		OSMA			
		OSTENNDROF-NG			
		CONCEPT			
		SAPCO			
		CAFMO			
15.31 & 15.54	Seamless steel pipes	COSMOPLAST	YES	REV 1	APPROVED AS NOTED
		WORLD PLASTIC			
		NIPPON			
		TUBAS			
		DELAMINI			
		PIETRA			
		HEBEI			
		INTERPIPE			
15.31 & 15.54	Steel Fittings	BRISTOL	NO	NO	
		SILKTUBE			
		SHIELD			
		AFL			
		CRANE			
		ECONOSTO			
		DELAMINI			
		IBS			
IRC					
HEBEI					
SHURJOINTS					
BRISTOL					
SHIELD					

Item No.	Description	Vendor List	Submitted Material	No. of Rev	Engineer Response
15.31 & 15.54	VALVES	CRANE HATTERSLEY ECONOSTO OVENTROP T&A NIPCO HOLMES SHURJOINTS BRISTOL SHIELD	NO	NO	
15.31 & 15.54	Duct & Pipe Support	FISCHER HILTI FLAMCO MEFA CADDY BRISTOL INKA	NO	NO	
15.31 & 15.54	Guages / Thermometers	H.O.TERICE ASHCROFT WEISS DWYER TOZEN HOLMES LUXOR	NO	NO	
15.31 & 15.54	Sanitary Fixture	DURAVET LAUFEN VILERROY&BOCH IDEAL STANDARD KEREMAG RAK VITRA PRESSALT GEBERIT	YES	REVO	REVISE & RE-SUBMIT
15.31 & 15.54	Faucets & Mixer	GROHE HANSGROHE HANSA IDEAL STANDARD DELABIE THG	NO	NO	

Item No.	Description	Vendor List	Submitted Material	No. of Rev	Engineer Response
15.31 & 15.54	Pipe & Duct Insulation	AFICO KIMCO HEBEI KNAUF IZOCAM K FLEX	NO	NO	
15.31 & 15.54	All Kind Of Pumps ( domestic, fire, submersible & irrigation)	KSB ARMSTRONG ITT HOLDEN BROOKS PULLEN FAIRBANKS MORES PACO NEW HADEN CRANE BIRAL FLYGT ABS AFICO KIMCO HEBEI KNAUF IZOCAM K FLEX HOMA JUNG HERBORNER BRISTOL GRUNDFOS WILO SAER AURORA SPP ANDRITZ	NO	NO	
15.31 & 15.54	Kitchen Sinks	ELKAY BLANCO SCHOCK	NO	NO	
15.31 & 15.54	Damper / Duct Accessories	KBE GREENHECK RUSKIN TROX BSB MAT METROPOL AIR TECK AIR MASTER BSP SAFID ATAI	NO	NO	



Item No.	Description	Vendor List	Submitted Material	No. of Rev	Engineer Response
15.31 & 15.54	Air Outlet / Louver	KBE TITUS TROX AIR MASTER TECHNOSTREAM COOLING INDUSTRIES GOLDEN STAR	NO	NO	
15.31 & 15.54	Flexible Duct Connections	DURODYNE DYNAIR SAFID	NO	NO	
15.31 & 15.54	All Kind of Fan	ACME TWINCITY ELTA SODECA VENCO PENN SYSTEM AIR GREEN HECK S&P WOODS	NO	NO	
15.31 & 15.54	Split Air Conditioners	DAIKEN PETRA SKM PANASONIC MITSUBISHI (MHI) O GENERAL GREE FUJITSU SAMSUNG LG TOSHIBA TRANE	NO	NO	
15.31 & 15.54	Rooftop Packaged Units	DAIKEN PETRA SKM PANASONIC MITSUBISHI (MHI) O GENERAL DUNHAM-BUSH FUJITSU SAMSUNG LG TOSHIBA TRANE YORK MCQUAY CARRIER	NO	NO	

Item No.	Description	Vendor List	Submitted Material	No. of Rev	Engineer Response
15.31 & 15.54	Expansion Tanks	FLAMCO ARMSTRONG REFLEX EMRA-IMAS	NO	NO	
15.31 & 15.54	Double Regulating Valves	CRANE HATTERSLEY T&A OVENTROP HOLMES SHIELD ACASO APE	NO	NO	
15.31 & 15.54	Pipe Flexible Connections	MASON MERCER RUBBER KINETICS TOZEN	NO	NO	
15.31 & 15.54	Fire Hose Reel & Portable Fire Extinguisher	NORSEN ANGUS THORN COMBAT NAFFCO SUZHOU BRISTOL FULLBLAZE TOTAL KIDDE NOHA SHIELD	NO	NO	
15.31 & 15.54	Galvanized Sheet Metal	NIPPON SUMITOMO SABIC	NO	NO	
15.31 & 15.54	Boiler	HURST HOVAL LOOS VISSMAN CLEARVER BROOKS WELLMAN ROBEY BURNHAM DE-DIETRICH CHAPEE SAINT ROCH BIASI IVAR BUDARAES	NO	NO	

Item No.	Description	Vendor List	Submitted Material	No. of Rev	Engineer Response
15.31 & 15.54	Chimney & Chimney Breaching	RITE VENT SELKIRK RAAB DINAK METALOTERM ONTOP	NO	NO	
15.31 & 15.54	Air and Dirt Separator	SPIROTECH FLAMCOVENT REFLEX TACO BELL&GOSSET SIPIROVENT PNEUMATIX T&A	NO	NO	
15.31 & 15.54	LPG Valves	CRANE GIACOMINI COMAP TECOFI	NO	NO	
15.31 & 15.54	PRV's Regulating, Pressure Guages Safety Valves for LPG	FISHER REGO COMAP HOLMES PIPEX AQUAPIPE	NO	NO	
15.31 & 15.54	Cross Linked Polyethylene (XLPE)	UPONOR LK REHAU HENCO OVENTROP FORNARA APE	NO	NO	
15.31 & 15.54	PEX PIPE FITTING	GIACOMINI EMMETI LUXOR OVENTROP FORNARA APE	NO	NO	
15.31 & 15.54	Toilet Flushing System	GROHE GEBERIT ALCAPLAST	NO	NO	

Item No.	Description	Vendor List	Submitted Material	No. of Rev	Engineer Response
15.31 & 15.54	Electric Water Heater	ARISTON	NO	NO	
		BAXI			
		FERROLI			
		THEMEX			
		A.O.SMITH			
15.31 & 15.54	ROOF DRAIN TRENCH	J R SMITH	NO	NO	
		JOSAM			
		WADE			
		ZURN			
		ACO			
15.30	Water Tanks	Not Mentioned	NO	NO	
15.23	Vibration Isolator	Not Mentioned	NO	NO	
15.27	LPG Copper pipes	Not Mentioned	NO	NO	
15.33 & 15.34	Poly Proplene pipes	Not Mentioned	NO	NO	
15.25	CPVC Pipes	Not Mentioned	NO	NO	
15.49	water Cooler	Not Mentioned	NO	NO	
15.35	Heating Cabinets	Not Mentioned	NO	NO	
15.14	Anti- Scale units	Not Mentioned	NO	NO	
Gen.	Pipe flexible connections	Not Mentioned	NO	NO	
15.12	Radiators	VIDARUS	YES	Rev 1 & 2	Rejected
15.26	Flow meter	Not Mentioned	NO	NO	
15.45	Manhole Cover	Not Mentioned	NO	NO	
15.18	Acoustic Duct Liner	Not Mentioned	NO	NO	

## Summary of Submitted Materials

Wahib Medanat Consultant Engineers

<b>SUMMARY OF SUBMITTED MATERIAL</b>	
<b>ELECTRICAL SUBMITTALS</b>	
<b>Total No. of Materials to be Submitted =</b>	<b>27</b>
<b>Total No. of Submitted Material =</b>	<b>11</b>
Percentage of Approved Submitted Material =	<b>54.5%</b>
Percentage of Rejected Submitted Material =	<b>27.2%</b>
Percentage of (Revise & Re-Submit) Material =	<b>18.1%</b>
<b>MECHANICAL SUBMITTALS</b>	
<b>Total No. of Materials to be Submitted =</b>	<b>45</b>
<b>Total No. of Submitted Material =</b>	<b>4</b>
Percentage of Approved Submitted Material =	<b>50.0%</b>
Percentage of Rejected Submitted Material =	<b>25.0%</b>
Percentage of (Revise & Re-Submit) Material =	<b>25.0%</b>
<b>ARCHITECTURAL SUBMITTALS</b>	
<b>Total No. of Materials to be Submitted =</b>	<b>41</b>
<b>Total No. of Submitted Material =</b>	<b>6</b>
Percentage of Approved Submitted Material =	<b>60.0%</b>
Percentage of Rejected Submitted Material =	<b>0.00%</b>
Percentage of (Revise & Re-Submit) Material =	<b>40.0%</b>

# List of Tables and Figures

## Tables

<b>Table 1.</b>	Main Progress Information	
<b>Table 2.</b>	Coordination & Progress Meetings	
<b>Table 3.</b>	Site Visits	
<b>Table 4.</b>	Official Letters	
<b>Table 5.</b>	Submittals Log- Shop Drawings	
<b>Table 6.</b>	Submittals Log- Materials Submittals	
<b>Table 7.</b>	Lab-Tests Results Log	
<b>Table 8.</b>	Demolition Log	
<b>Table 9.</b>	Grid 3x3 Inspection Report	
<b>Table 10.</b>	Progress Table	
<b>Table 11-1.</b>	Daily Plant & Equipment Log- Thahr Al Sarow Basic School for Boys	
<b>Table 11-2.</b>	Daily Plant & Equipment Log- Jumana Bint Abi Taleb Basic Mixed School	
<b>Table 11-3.</b>	Daily Plant & Equipment Log- Hay Al Iskan Basic Mixed School	
<b>Table 11-3.</b>	Daily Plant & Equipment Log- Hay Al Iskan Basic Mixed School	
<b>Table 12-1.</b>	Daily Manpower Log- Thahr Al Sarow Basic School for Boys	
<b>Table 12-2.</b>	Daily Manpower Log- Jumana Bint Abi Taleb Basic Mixed School	
<b>Table 12-3.</b>	Daily Manpower Log- Hay Al Iskan Basic Mixed School	
<b>Table 13-1.</b>	Percentage of Completion Thahr Al Sarow Basic School for Boys	
<b>Table 13-2.</b>	Percentage of Completion Jumana Bint Abi Taleb Basic Mixed School	
<b>Table 13-3.</b>	Percentage of Completion Hay Al Iskan Basic Mixed School	
<b>Table 14.</b>	Log of Activities	
<b>Table 15.</b>	Cash-Flow	

## Figures

<b>Figure 2-1.</b> Daily Manpower Log- Thahr Al Sarow Basic School for Boys	
<b>Figure 2-2.</b> Daily Manpower Log- Jumana Bint Abi Taleb Basic Mixed School	
<b>Figure 2-3.</b> Daily Manpower Log- Hay Al Iskan Basic Mixed School	
<b>Figure 3.</b> Percentage of Completion- Thahr Al Sarow Basic School for Boys	
<b>Figure 4.</b> Percentage of Completion (Cumulative) Thahr Al Sarow Basic School for Boys	
<b>Figure 5.</b> Percentage of Completion- Jumana Bint Abi Taleb Basic Mixed School	
<b>Figure 6.</b> Percentage of Completion (Cumulative) Jumana Bint Abi Taleb Basic Mixed School	
<b>Figure 7.</b> Percentage of Completion – Hai Al Iskan Basic Mixed School	
<b>Figure 8.</b> Percentage of Completion (Cumulative) Hai Al Iskan Basic Mixed School	
<b>Figure 9.</b> Percentage of Completion (Cumulative Progress)- SKEP III Schools	
<b>Figure 10.</b> Cash-Flow Chart	