

# Quality Control Report

**Consultant** **Wahib Medanat** Consultant Engineers  
**Site Name** **Khadija Bint Khwailed Basic Mixed - Balqa**  
**Package** **Package 1**  
**Contractor** **Derar Saraireh & Sons for Engineering & Contracting**  
**Tender No.** **1/2020/USAID/SKEP/3/1**

**Rep No.** **QC-13 15**  
**Date** **20 / 03 / 2022**

Description of Non Conformance	Corrective Action	Required by / When
<ol style="list-style-type: none"> <li>1. Defects in colored plastering of the boundary walls, thin layers, smooth, no texture in some parts.</li> <li>2. Steel protection screen, defects in paint and straightness of bars.</li> <li>3. Teething in porcelain floor tiles.</li> <li>4. Defects in ceramic wall tiles, grouting, broken tiles and beads.</li> <li>5. Broken window sills and shortage in length.</li> <li>6. Air voids under sheet waterproofing at the roof.</li> <li>7. Stone facades need cleaning</li> </ol>	<ol style="list-style-type: none"> <li>1. Rectify as per sample</li> <li>2. Rectify paint and replace bars.</li> <li>3. Replace tiles.</li> <li>4. Replace defected parts.</li> <li>5. Replace defected sills.</li> <li>6. Rectify.</li> <li>7. Clean.</li> </ol>	The Contractor/Without delay
<b>Report Prepared by</b>	Hassan Shaqbua, Supervision Quality Control Manager	
<b>Contractor's Response</b>	The Contractor responded and rectified remarks no. 4 and 5.	
<b>Notes</b>		

Consultant Site Engineer

Contractor Site Engineer

Signature

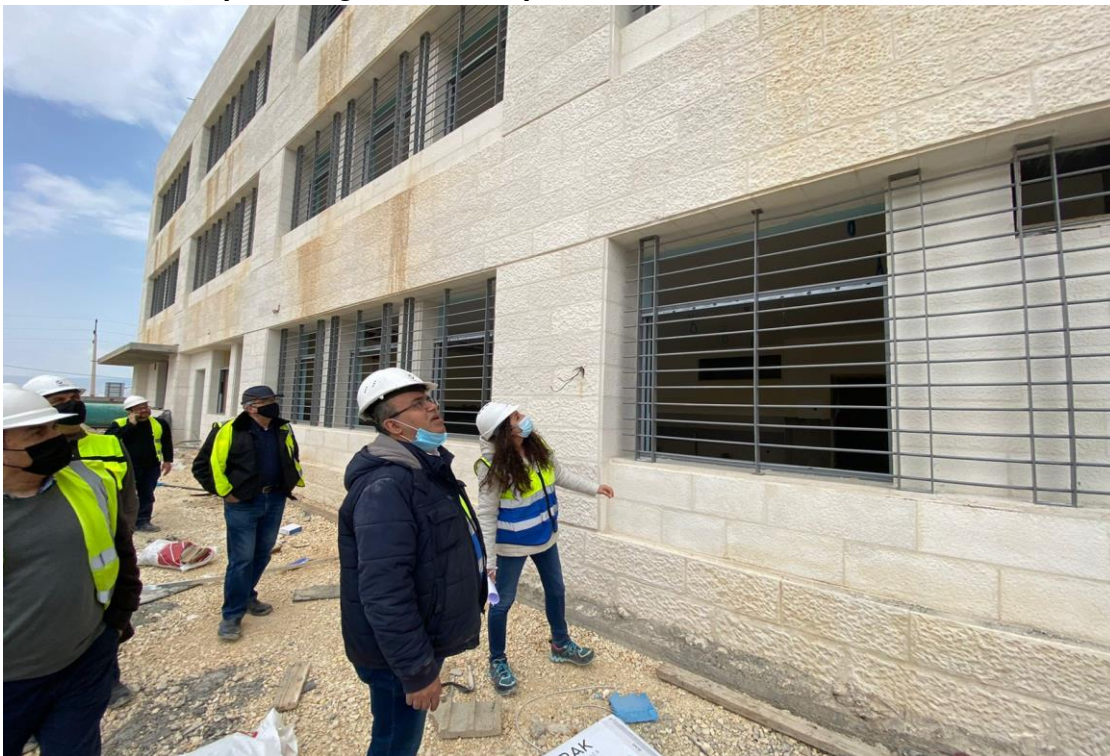
Signature

# Quality Control Report

## Before Photos:



**Defects in color plastering for boundary walls**



**Defects in steel protection screens**

Consultant Site Engineer

Contractor Site Engineer

Signature

Signature

# Quality Control Report



**Teething in porcelian floor tiles**



**Broken ceramic wall tiles**

Consultant Site Engineer

Signature

Contractor Site Engineer

Signature

# Quality Control Report



**Broken tile beads**



**Broken window sill**

Consultant Site Engineer

Signature

Contractor Site Engineer

Signature

# Quality Control Report



**Shortage in the length of window sill**



**Defects in sheet waterproofing**

Consultant Site Engineer

Contractor Site Engineer

Signature

Signature

5/7

3/31/2022

C:\Users\o.naddaf\Desktop\new QCs-03-2022\  
QC-131520032022.xlsx

# Quality Control Report



**Stone facades need cleaning**

Consultant Site Engineer

Signature

Contractor Site Engineer

Signature

# Quality Control Report

## Photos After:



Removal of defected wall tiles



Removal of defected window sill

Consultant Site Engineer

Signature

Contractor Site Engineer

Signature