

Quality Control Report



Consultant Wahib Medanat Consultant Engineers
Site Name Jumana Bint Abi Taleb Basic Mixed - Marka
Package Package 2
Contractor Dijlah Est. Construction Co.
Tender No. 10/2019/USAID/SKEP/3/2

Rep No. QC-23 03
Date 15 / 03 / 2021

Description of Non Conformance	Corrective Action	Required by / When
1. Roughness in some areas in base course.	1. To be remedied.	Contractor/Immediately
2. Corners of external columns are damaged.	2. To be repaired by approved materials.	Contractor/Immediately
3. Steel reinforcement has a brown layer on the face due to weather effect.	3. Need to be brush-cleaned.	Contractor/Immediately
4. Part of the imported building stone does not comply with approved sample.	4. To be removed outside the site and replaced by complied stones.	Contractor/Immediately
Report Prepared by	Hassan Shaqbua, Supervision Quality Control Manager	

Contractor's Response

Sample was sent to the lab and the result is awaited. Sieve analysis will be considered to decide.

Notes

Consultant Site Engineer

Contractor Site Engineer

Signature

Signature

Quality Control Report



Consultant Site Engineer

Signature

Contractor Site Engineer

Signature

Quality Control Report



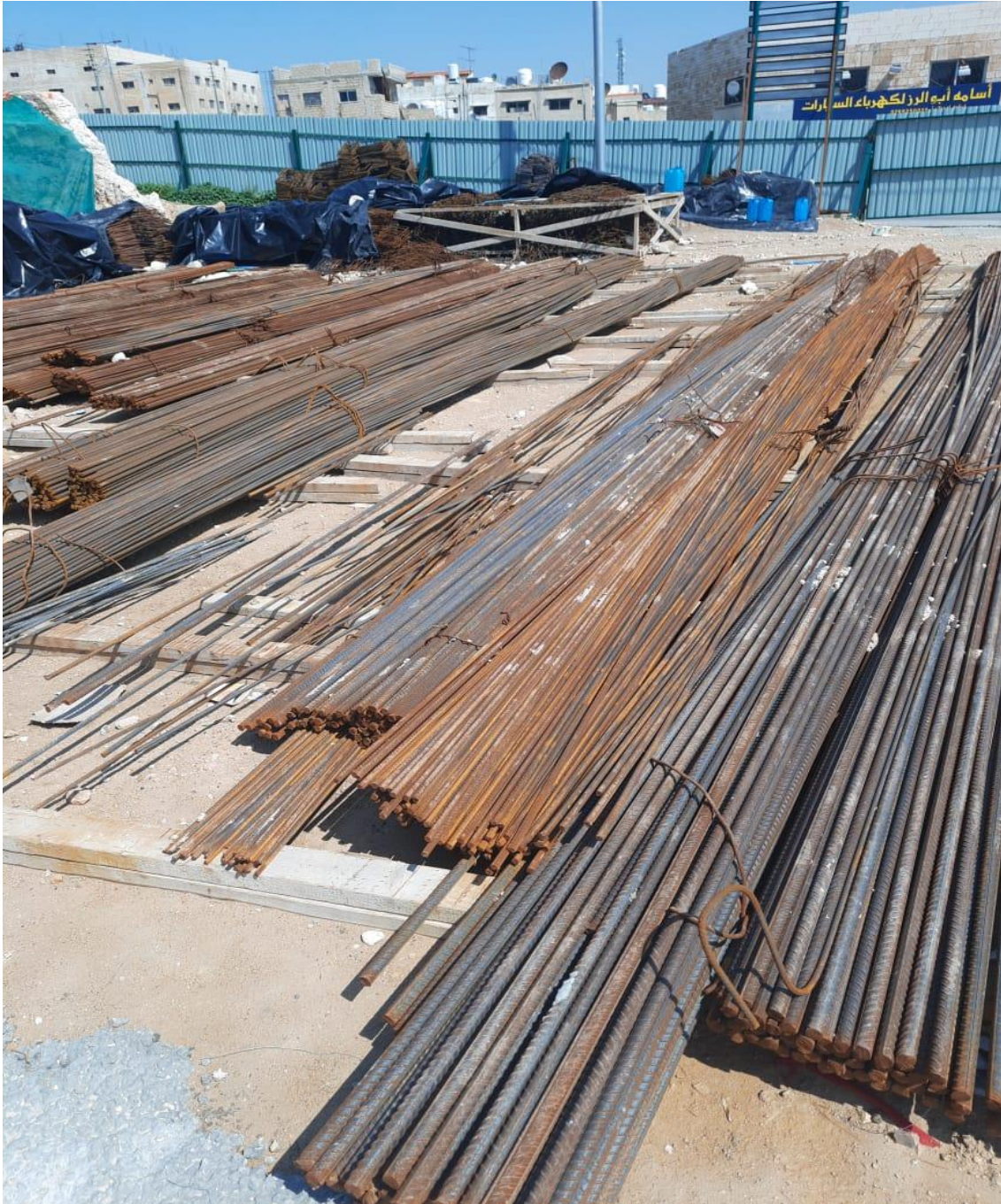
Consultant Site Engineer

Signature

Contractor Site Engineer

Signature

Quality Control Report



Consultant Site Engineer

Contractor Site Engineer

Signature

Signature

Quality Control Report



Consultant Site Engineer

Signature

Contractor Site Engineer

Signature