



Consultant	Wahib Medanat Consultant Engineer	Rep No.	23-23072022
Contractor	Dijlah Establishment Constr. Contracting	Tender No.	(11/2019/USAID/SKEP/3/S) Schools for a Knowledge Economy Project (SKEP) - Phase (3) Package (1, 2)
Site Name	Jumana Bint Abit Taleb Basic Mixed School - Jerash	Day/ Date	Sat. 23/07/2022
Duration of Project	450 Calendar Days	Total Project Budget	8,314,983.735 JD

No.	Visitors		Remarks
1	Suhair Amarin	- Project Dir./Head of Architectural Department	
2	Hashem Abu Kwaik	- Senior Civil Engineer	
3	Akram Khammes	- Head of Electrical Department	
4	Marwan Sonna'a	- Head of Mechanical Department	
5	Hasan Shaqboua	- Quality Control Manager	

Visit Notes

No.	Description
1	The supervision team observed defects in the painting for the horizontal pipes of the shading. Also the fabric needs more tightening to reduce the movement. The edges of the shading foot at the sand pool needs to be rectified to avoid injuries of the users.
2	The team observed that the Contractor used different color of paint for the steel protections screens for a number of windows. The team requested the Contractor to rectify.
3	The team observed that the Contractor has completed the agricultural works in the site.
4	The team requested the Contractor to remove corrosion, clean and paint the manholes covers as per specifications.
5	The team inspected the prepared sample by the Contractor for the stone benches at the yard and requested the Contractor that the supports of the benches have to be fair face finish not colored plastering. Also, to use one stone piece of 6cm thickness instead of two pieces of 3cm thickness each.



No.	Description
6	The team observed that the joints between ceramic tiles under the window sill are not compatible with each other. The Contractor took action immediately to fix the issue.
7	The team observed that the fabric at the shading of the yard is not covering the whole area for protection from the sun. The Contractor was requested to rectify.
8	The team observed voids in the casted concrete for the amphitheater.
9	The team observed that the Contractor started with the execution of asphalt for the parking area.
10	The team inspected the external colored plastering and requested the Contractor to clean all the white dirt and color resulted from works in the stone coping or defects in the plastering material. Also, the Contractor was reminded of one of the requirements of the specifications, which is to apply protective coating at the top of plastering
11	The team stressed on the Contractor not to continue in the execution of the suspended ceiling for the multi-purpose hall unless the water penetration test for the roof has passed. (Note: the Water penetration test has failed for three times).
12	The team observed that the granite coping at corridors is executed as required.
13	The team observed that the Contractor has executed part of the suspended ceiling for the disabled toilet near the multi-purpose hall with drop at limited area as the need to cover the mechanical duct at that part. This is not accepted reminding that the Contractor has not submitted coordination drawings in this regard to solve this case, the Contractor was requested to extend the dropped box to be connected with sanitary unit wall.
14	The team observed that the Contractor has executed the suspended ceiling for the women toilet at wrong level. The Contractor was requested to dismantle the said ceiling and re-fix at the right level.
15	The team observed that the Contractor delivered and fixed Matthews fans for the classrooms.
16	The team observed waving in the plastering of the ceiling at the toilets which led to gaps between the ceiling and the lighting fixture. The Contractor was requested to repair the plastering in order to avoid the said gaps.



No.	Description
17	The team requested the Contractor to reduce the protrusion in the rainwater drainage pipe and execute the required slope to direct the drained water to the sidewalk.
18	The team inspected the fire hose cabinets at the corridors, and observed that the protrusion of the cabinets from the wall is not fixed despite what was agreed upon in the previous visit. The Contractor was requested to rectify.
19	The team reminded the Contractor that all the hinged windows at the toilets shall open at 45 degree.
20	The team observed that the finishing work around the electrical sockets is done incorrectly. The Contractor was requested repair the said defects.
21	The team observed that parts of the installed laboratories' do not comply with the approved color scheme.



Project ID
Sign on Site





General view of the project site

(figures: 01, 02, 03 & 04)

(Figure: 01)



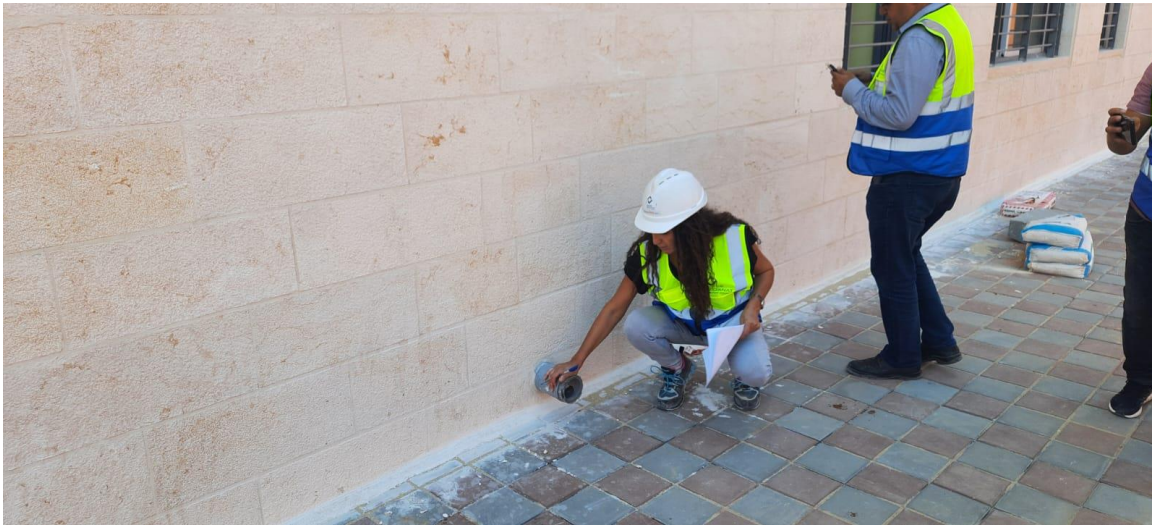
(Figure: 02)



(Figure: 03)

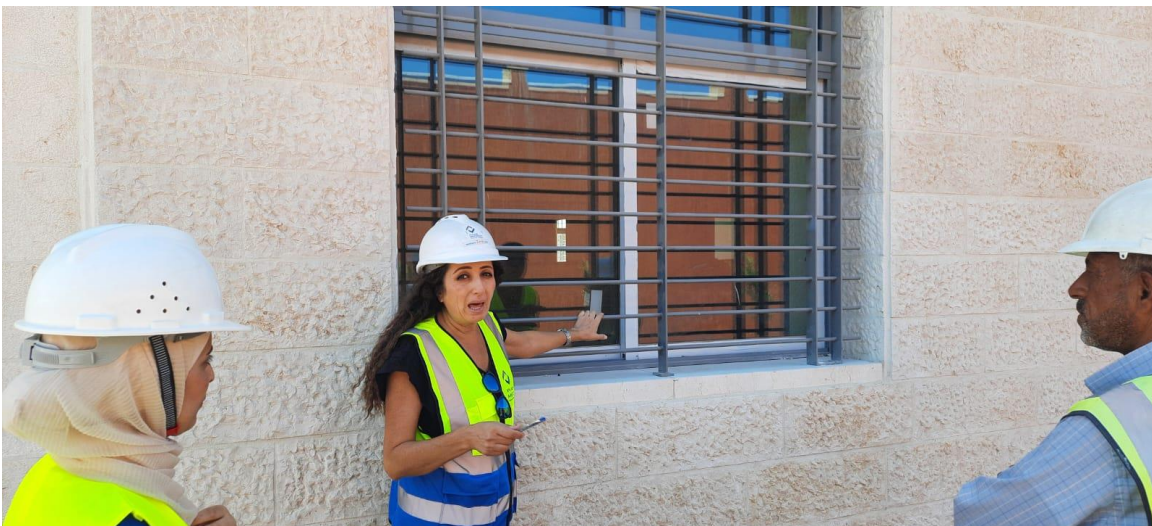


(Figure: 04)



Reduction of the protrusion in the rainwater drainage pipe and executing the slope for the water between the building facade and the sidewalk is required

(Figure: 05)



The Contractor used different color of paint for the steel protections screens for a number of windows

(Figure: 06 & 07)

(Figure: 06)



The team requested the Contractor to rectify

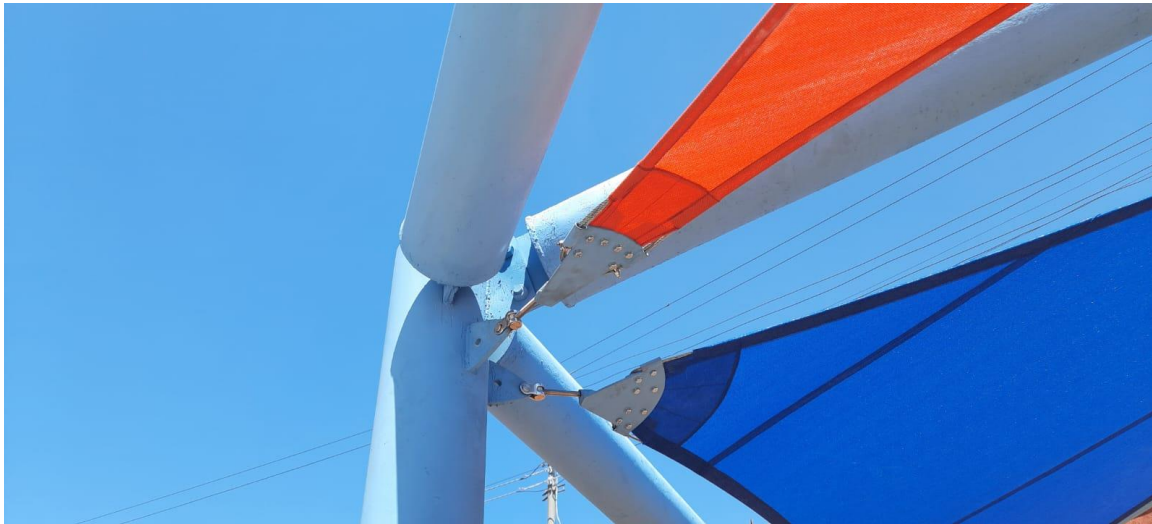
(Figure: 07)



(Figure: 08)

The supervision team observed defects in the painting for the horizontal pipes of the shading. Also the fabric needs more tightening to reduce the movement. The edges of the shading foot at the sand pool needs to be rectified to avoid injuries of the users

(Figure: 08 & 09)



(Figure: 09)



(Figure: 10)

The team observed that the Contractor has completed the agricultural works in the site

(Figure: 10 & 11)



(Figure: 11)



(Figure: 12)

The team requested the Contractor to remove corrosion, clean and paint the manholes covers as per specifications

(Figure: 12 & 13)



(Figure: 13)



(Figure: 14)

The team inspected the sample prepared by the Contractor for the stone benches at the yard and requested the Contractor that the benches supports have to be fair face finish not colored plastering. Also, to use one stone piece of 6cm thickness instead of two pieces of 3cm thickness each



(Figure: 14 & 15)

(Figure: 15)



(Figure: 16)

The team observed that the fabric at the shading of the yard is not covering the whole area for protection from the sun. The Contractor was requested to rectify

(Figure: 16 & 17)



(Figure: 17)



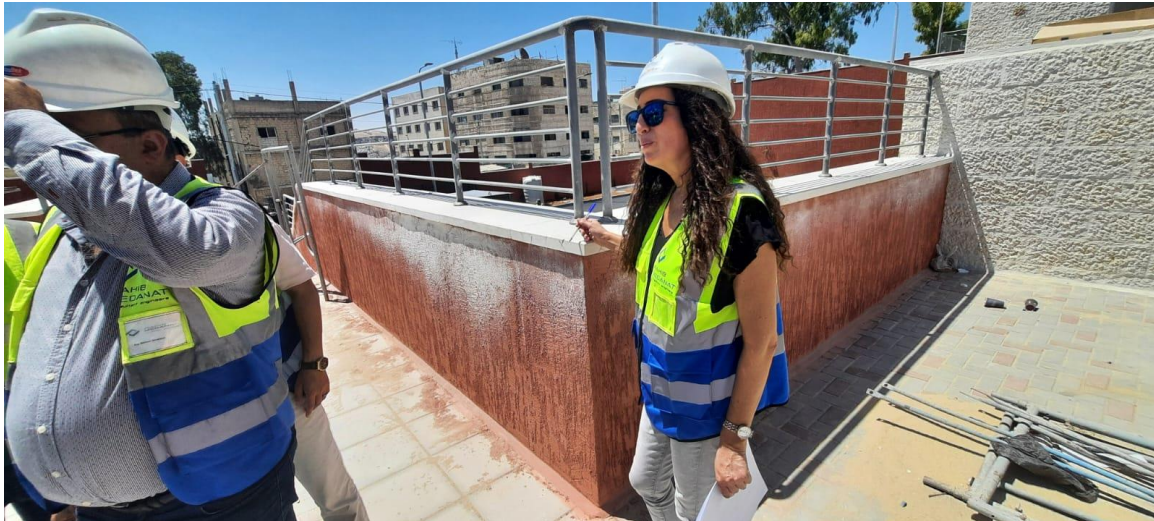
The team observed voids in the casted concrete for the amphitheater

(Figure: 18)



The team observed that the Contractor started with the execution of asphalt for the parking area

(Figure: 19)



The team requested the Contractor to clean the white dirt resulted from works in the stone coping or defects in the plastering material

(Figure: 20)



(Figure: 21)

The team stressed on the Contractor not to continue in the execution of the suspended ceiling for the multi-purpose hall unless the water penetration test for the roof has passed. (Note: The Water penetration test has failed for three times)



(Figure: 21 & 22)

(Figure: 22)



(Figure: 23)

The team observed that the granite coping at corridors is executed as required



(Figure: 23 & 24)

(Figure: 24)



(Figure: 25)

The team inspected the suspended ceiling for the disabled toilet near the multi-purpose hall and observed a drop at limited area as the need to cover the mechanical duct at that part. This is not accepted reminding that the Contractor has not submitted coordination drawings in this regard to solve this case, the Contractor was requested to extend the dropped box to be connected with sanitary unit wall

(Figure: 25 & 26)



(Figure: 26)



The suspended ceiling for at women toilet is executed at a wrong level. The Contractor was requested to dismantle and re-fix it above the partitions' top level

(Figure: 27)



The team observed that the joints between ceramic tiles under the window sill are not compatible with each other. The Contractor took action immediately to fix the issue

(Figure: 28)



The team reminded the Contractor that all the hinged windows at the toilets shall open at 45 degree

(Figure: 29)



The team observed that the Contractor delivered and fixed Matthews fans for the classrooms

(Figure: 30)



The team observed waving in the plastering of the ceiling at the toilets which led to gaps between the ceiling and the lighting fixture. The Contractor was requested to repair the plastering in order to avoid the said gaps

(Figure: 31)



(Figure: 32)

The team observed that the finishing work around the electrical sockets is done incorrectly. The Contractor was requested repair the said defects

(Figure: 32, 33 & 34)



(Figure: 33)



(Figure: 34)



(Figure: 35)

The team observed that parts of the installed laboratories' do not comply with the approved color scheme

(Figure: 35 & 36)



(Figure: 36)



The team observed that the protrusion of the fire hose cabinets from the wall is not fixed despite what was agreed upon in the previous visit

(Figure: 37)