



| | | | |
|---------------------|---|----------------------|--|
| Consultant | Wahib Medanat Consultant Engineer | Rep No. | 11-19022022 |
| Contractor | Derar Saraireh & Sons for Engineering & Contracting | Tender No. | (11/2019/USAID/SKEP/3/S) Schools for a Knowledge Economy Project (SKEP) - Phase (3) Package (1, 2) |
| Site Name | Um Al Dananir Basic Mixed School- Al Balqa | Day/ Date | Sat. 19/02/2022 |
| Duration of Project | 450 Calendar Days | Total Project Budget | 9,789,417.840 JD |

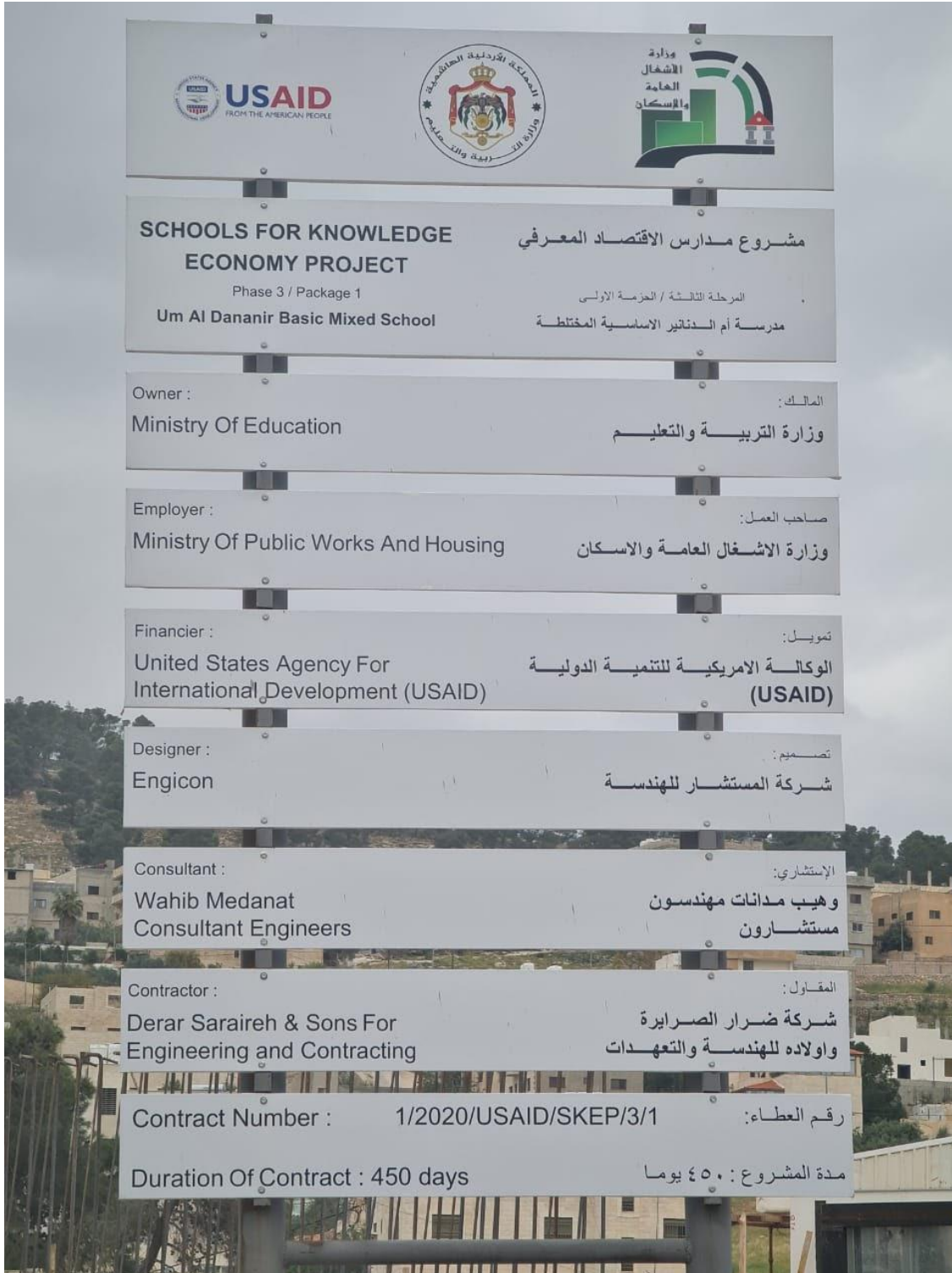
| No. | Visitors | | Remarks |
|-----|------------------|---|---------|
| 1 | Suhair Amarin | - Project Dir./Head of Architectural Department | |
| 2 | Hashem Abu Kwaik | - Senior Civil Engineer | |
| 3 | Akram Khammes | - Head of Electrical Department | |
| 4 | Marwan Sonna'a | - Head of Mechanical Department | |
| 5 | Hasan Shaqboua | - Quality Control Manager | |

Visit Notes

| No. | Description |
|-----|--|
| 1 | The supervision team inspected the stairs executed inside the multi-purpose hall. |
| 2 | The team discussed with the Contractor the dimensions of the sill at the entrance of the multi-purpose hall. |
| 3 | The team observed deviation in the floor tiling of the corridor inside the multi-purpose service area. The Contractor was requested to rectify the defect. |



| | |
|----|---|
| 4 | The team inspected the installed window frames and it was observed that a number of jambs have been affected by the rain water, visible part and the part covered by the frame. |
| 5 | The team observed internal humidity at the wall below the window sills and up to the skirting. |
| 6 | The team observed humidity at the ceiling of the wet areas due to water leakage |
| 7 | The team inspected the steel protection screen and observed corrosion at the joints of the sections of the screen. |
| 8 | The team observed deviation in the cutting of a number of marble sills and resulted in irregular joint width with the stone sills. The Contractor was requested to replace those sills. |
| 9 | The team discussed with the Contractor the connection between the porcelain tiles and the granite tiles at the staircase area. |
| 10 | The team inspected the wall tiling at the wet areas and observed unaccepted cutting of tiles adjacent to the door frames. |
| 11 | The team inspected the porcelain tiling for the walls of corridors and observed unacceptable cutting of tiles adjacent to the door frames. |
| 12 | The team inspected the installation of the fire hose cabinets and requested the Contractor to submit two samples in order to choose one to be executed. |
| 13 | The team discussed the connection between the porcelain floor tiles at the corners in the corridors. |
| 14 | The team discussed with the Contractor the connection of floor porcelain tiles of two corridors. The Contractor suggested to install a granite piece at the connection line. |



Project ID Sign
on Site



Sterilization and signing visitors' attendance sheet at the entrance of the site, complying with Covid-19 Protocol



General view of the project site

(figure:01, 02, 03, 04, 05 & 06))

(figure:01)



(figure:02)



(figure:03)



(figure:04)



(figure:05)



(figure:06)



Discussing several issues with the Contractor on site

(figure:07)



The team discussed with the Contractor the dimensions of the sill at the entrance of the multi-purpose hall

(figure:08)



(figure:09)

The supervision team inspected the stairs executed inside the multi-purpose hall

(figure:09 & 10)



(figure:10)



The team observed deviation in the floor tiling of the corridor inside the multi-purpose service area. The Contractor was requested to rectify the defect

(figure:11)



The team discussed with the Contractor the connection between the porcelain tiles and the granite tiles at the staircase area

(figure:12)



(figure:13)

The team discussed with the Contractor the connection of floor porcelain tiles of two corridors. The Contractor suggested to install a granite piece at the connection line



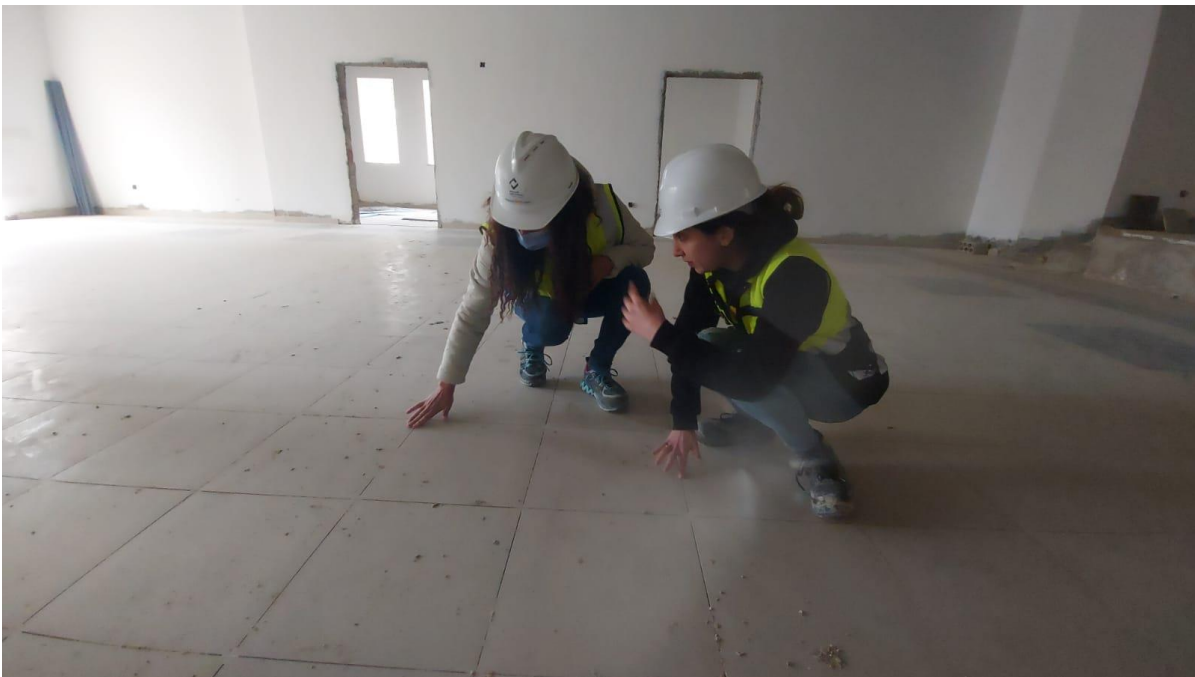
(figure:13 & 14)

(figure:14)



The team requested the Contractor to replace the one of the panels with a wider one to fit the angle perfectly

(figure:15)



The team inspected the floor tiling work and expressed satisfaction

(figure:16)



The team inspected the wall tiling at the wet areas and observed unaccepted cutting of tiles adjacent to the door frames
(figure:17 & 18)

(figure:17)



(figure:18)



(figure:19)

The team inspected the porcelain tiling for the walls of corridors and observed unacceptable cutting of tiles adjacent to the door frames



(figure:19 & 20)

(figure:20)



(figure:21)

The team observed internal humidity at the wall below the window sills and up to the skirting

(figure:21 & 22)



(figure:22)



The team observed humidity at the ceiling of the wet areas due to water leakage

(figure:23)



Tiling wall at the Corridors

(figure:24)



Inspecting porcelain column cladding at the corridor

(figure:25)



The team inspected the installation of the fire hose cabinets and requested the Contractor to submit two samples in order to choose one to be executed

(figure:26)



The team observed deviation in the cutting of a number of marble sills and resulted in irregular joint width with the stone sills. The Contractor was requested to replace those sills

(figure:27)



The team inspected the steel protection screen and observed corrosion at the joints of the sections of the screen

(figure:28 & 29)

(figure:28)



(figure:29)



The team inspected the installed window frames and it was observed that a number of jambs have been affected by the rain water, visible part and the part covered by the frame

(figure:30)



The supervision team observed that the gap between the inside sill (marble) and the outer sill (stone) of windows is wider than required

(figure:31)