



SKEP III Home Office Support Site Visit Report

**WAHIB
MEDANAT**
consultant engineers

Consultant	Wahib Medanat Consultant Engineer	Rep No.	12-20032022
Contractor	Derar Saraireh & Sons for Engineering & Contracting	Tender No.	(11/2019/USAID/SKEP/3/S) Schools for a Knowledge Economy Project (SKEP) - Phase (3) Package (1, 2)
Site Name	Al Khansa' Basic Mixed School- Al Balqa	Day/ Date	Sun. 20/03/2022
Duration of Project	450 Calendar Days	Total Project Budget	9,789,417.840 JD

No.	Visitors		Remarks
1	Suhair Amarin	- Project Dir./Head of Architectural Department	
2	Hashem Abu Kwaik	- Senior Civil Engineer	
3	Akram Khammes	- Head of Electrical Department	
4	Marwan Sonna'a	- Head of Mechanical Department	
5	Hasan Shaqboua	- Quality Control Manager	

Visit Notes

No.	Description
1	The supervision team inspected the lately delivered quantities of granite tiles and cladding and stressed on the Contractor to avoid using any pieces with defects.
2	The team inspected the proposed samples of final finish (texture) for the external plastering. After discussion, the team informed the Contractor with the approved samples and instructed him to submit a method statement for the execution of higher walls.
3	The team discussed with the Contractor the works related to the ramps in the site and advised him to submit a request for information for any levels not indicated on the drawings.



4	The team inspected the sample prepared by the Contractor for the staircase granite cladding. The team pointed minor remarks to the Contractor, in general, the sample was acceptable.
5	The team discussed with the Contractor the details and levels of planter between Zone "B" and Zone "C".
6	The team reminded the Contractor with the continuation of wall porcelain tiles of corridors to reach the aluminum window frames.
7	The team inspected the executed sample of the internal expansion joint. In this regard, the team stressed on the Contractor to comply with the approved sample as per contract and the expansion joint cover shall be recessed below the level of porcelain floor tiles.
8	The team inspected the starting of execution of the suspended ceiling and stressed on the Contractor to ensure the vertically of frame hangers and to ensure using complete 60cmx60cm tiles at the ends.
9	The team inspected the installed wooden doors and observed that a number of doors have defective beech frames which need to be replaced. The team stressed on the Contractor to ensure using beech frames without any defects.
10	The team inspected the granite thresholds linking the corridors together.
11	The team inspected the granite thresholds at the wooden doors and requested the Contractor to rectify a number of those thresholds not well installed.
12	The team observed that the Contractor has removed part of defected wall tiles at the wet area as first step to replace the defective tiles.
13	The team observed that the Contractor executed the granite tiles for a number of stair landings using spaces of 2mm. The team requested the Contractor to comply with the zero-joints and the tiled landings should be removed and re-tiled accordingly.
14	The team inspected the installed window sills and requested the Contractor to rectify the defects and to replace the broken pieces before paint finish at the related areas.



15	The team inspected the works at the wet areas and observed that number of doors has defected beech frame need to be replaced.
16	The team inspected the installed steel protection screens. No defects were observed.
17	The team observed teething of executed porcelain floor tiles in some parts and request the Contractor to rectify.
18	The team inspected the cabinets installed in the building to keep the fire extinguishers.
19	The team inspected the color distribution of painting in the classrooms.
20	The team discussed with the Contractor the installation of fire cabinets in the corridors and the connection with the installation of granite at walls and the prominence of the said cabinets.
21	The team observed that the levels of window sills in the corridor are not compatible and need to be checked and rectified.
22	The team observed that due to other activities the stone facades require cleaning.

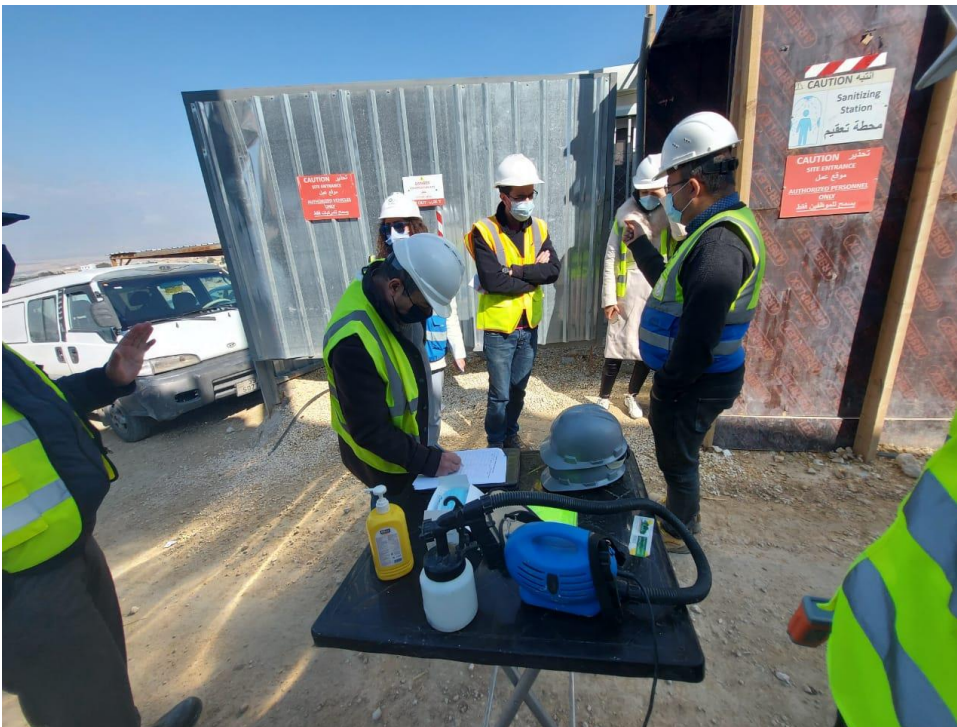


Project ID
Sign on Site





Sterilization and signing visitors' attendance sheet at the entrance of the site, complying with Covid-19 Protocol





General view of the project site

(Figure: 01, 02, 03 & 04)

(Figure: 01)



(Figure: 02)



(Figure: 03)



(Figure: 04)



(Figure: 05)

The team inspected the proposed samples of final finish (texture) for the external plastering. After discussion, the team informed the Contractor with the approved samples and instructed him to submit a method statement for the execution of higher walls

(Figure: 05 & 06)



(Figure: 06)



(Figure: 07)

The team discussed with the Contractor the works related to the ramps in the site and advised him to submit a request for information for any levels not indicated on the drawings

(Figure: 07 & 08)



(Figure: 08)



The team inspected the delivered quantities of granite tiles and cladding and stressed on avoiding using any pieces with defects

(Figure: 09)



The defective stones of the facades were still not rectified

(Figure: 10)



(Figure: 11)

The team observed that due to other activities the stone facades require cleaning



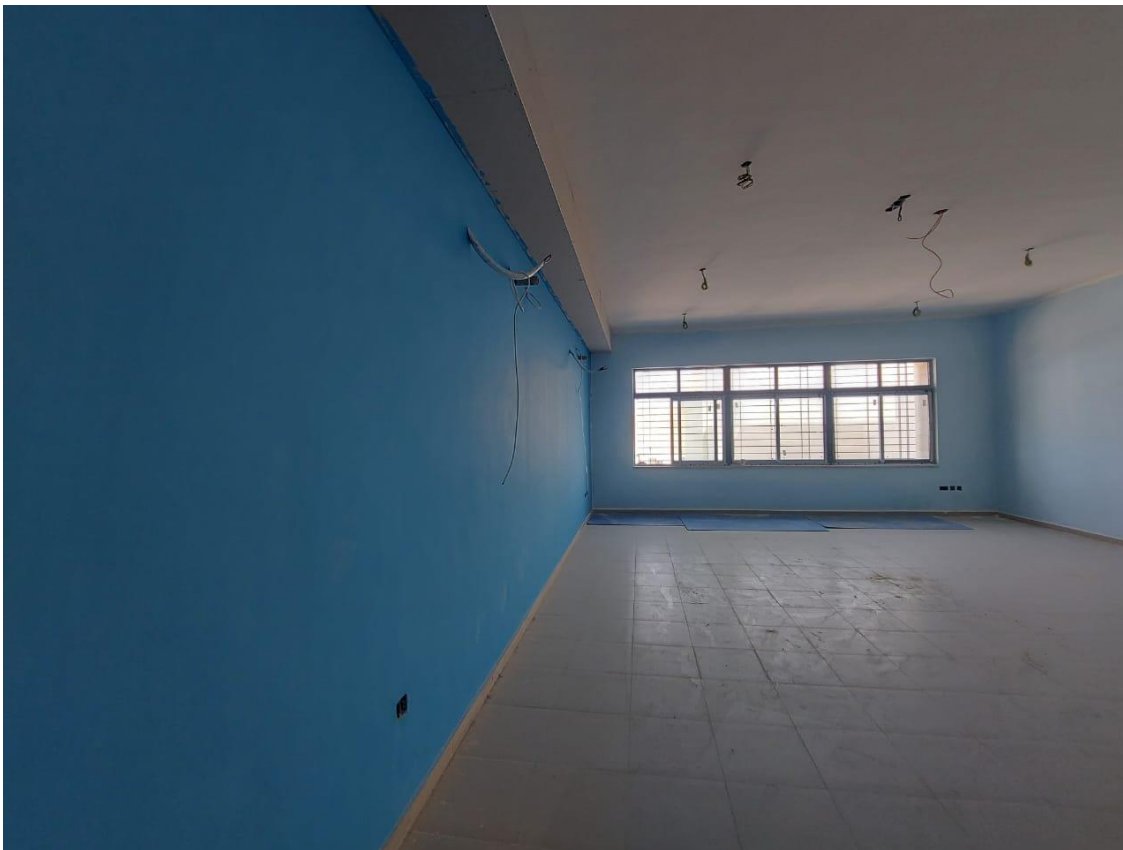
(Figure: 11 & 12)

(Figure: 12)



(Figure: 13)

The team discussed the distribution of colors at the classrooms



(Figure: 13 & 14)

(Figure: 14)



The team observed teething of executed porcelain floor tiles in some parts and request the Contractor to rectify

(Figure: 15)



(Figure: 16)

The team inspected the installed wooden doors and observed that a number of doors have defective beech frames which need to be replaced



(Figure: 16 & 17)

(Figure: 17)



The team inspected the sample prepared by the Contractor for the staircase granite cladding. The team pointed minor remarks to the Contractor, in general, the sample acceptable

(Figure: 18)



The team inspected the cabinets installed in the building to keep the fire extinguishers

(Figure: 19)



The team discussed with the Contractor the installation of fire cabinets in the corridors and the connection with the installation of granite at walls and the prominence of the said cabinets

(Figure: 20)



The team inspected the installed steel protection screens. No defects were observed

(Figure: 21)



The team observed that the Contractor has removed part of defected wall tiles at the wet area as first step to replace the defected tiles

(Figure: 22)



The team inspected the granite thresholds at the wooden doors and requested the Contractor to rectify a number of those thresholds not well installed

(Figure: 23)



The team inspected the granite thresholds linking the corridors together

(Figure: 24)



The team inspected the starting of execution of suspended ceiling and stressed on the Contractor to ensure the vertically of frame hangers and to ensure using complete 60cmx60cm tiles at the ends

(Figure: 25)



The team inspected the installed window sills and requested the Contractor to rectify the defects and to replace the broken pieces before paint finish at the related areas

(Figure: 26)



The team observed that the levels of window sills in the corridor are not compatible and need to be checked and rectified

(Figure: 27)



(Figure: 28)

The team inspected the executed sample of internal expansion joint. In this regard, the team stressed on the Contractor to comply with the approved sample as per contract and the expansion joint cover shall be recessed below the level of porcelain floor tiles



(Figure: 28 & 29)

(Figure: 29)