



Consultant	Wahib Medanat Consultant Engineer	Rep No.	13-27082022
Contractor	Derar Saraireh & Sons for Engineering & Contracting	Tender No.	(11/2019/USAID/SKEP/3/S) Schools for a Knowledge Economy Project (SKEP) - Phase (3) Package (1, 2)
Site Name	Khadija Bint Khwailed Basic Mixed School- Shouna Janoubia	Day/ Date	Sat. 27/08/2022
Duration of Project	450 Calendar Days	Total Project Budget	9,789,417.840 JD

No.	Visitors		Remarks
1	Suhair Amarin	- Project Dir./Head of Architectural Department	
2	Hashem Abu Kwaik	- Senior Civil Engineer	
3	Akram Khammes	- Head of Electrical Department	
4	Marwan Sonna'a	- Head of Mechanical Department	
5	Hasan Shaqboua	-Quality Control Manager	

### Visit Notes

No.	Description
1	The supervision team inspected the interlock tiled area and the process of filling planters with soil.
2	The team observed the concrete casting for the SOG of the yards.
3	The team observed the process of filling the front yard with sand.
4	The team inspected the steel reinforcement for the ramp.



	Description
5	The team discussed the stone coping at the external yards.
6	The team observed the first stage of installing the shadings at the front yard.
7	The team inspected painting works in the corridors and rooms.
8	The team inspected the executed works done at the suspended ceiling.
9	The team checked the installed laboratories' furniture.



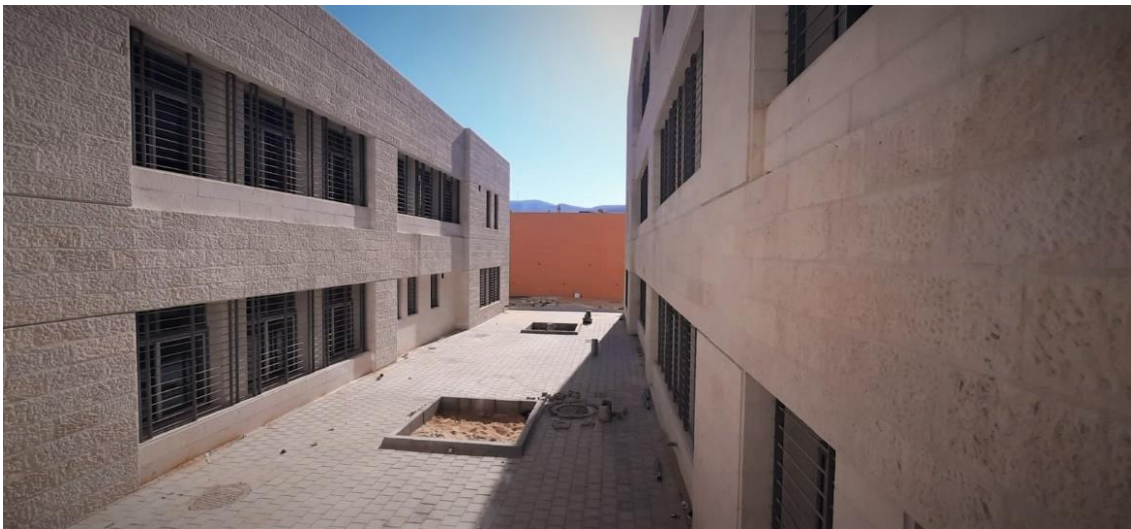
Project ID Sign  
on Site





General view  
of the project  
(Figure: 01, 02, 03,  
04)

(Figure: 01)



(Figure: 02)





(Figure: 03)



(Figure: 04)



The team inspected Interlock tiling and the process of filling planters with soil

(Figure: 05)



The team observed the concrete casting for the SOG of the yards

(Figure: 06)





Steel reinforcement for the ramp

(Figure: 07)



(Figure: 08)

The team discussed the stone coping at the external yards



(Figure: 08 & 09)

(Figure: 09)





The team inspected the executed works at the roof including electro-mechanical connections

(Figure: 10)



The supervision team inspected executed granite works and handrails painting at the main staircase

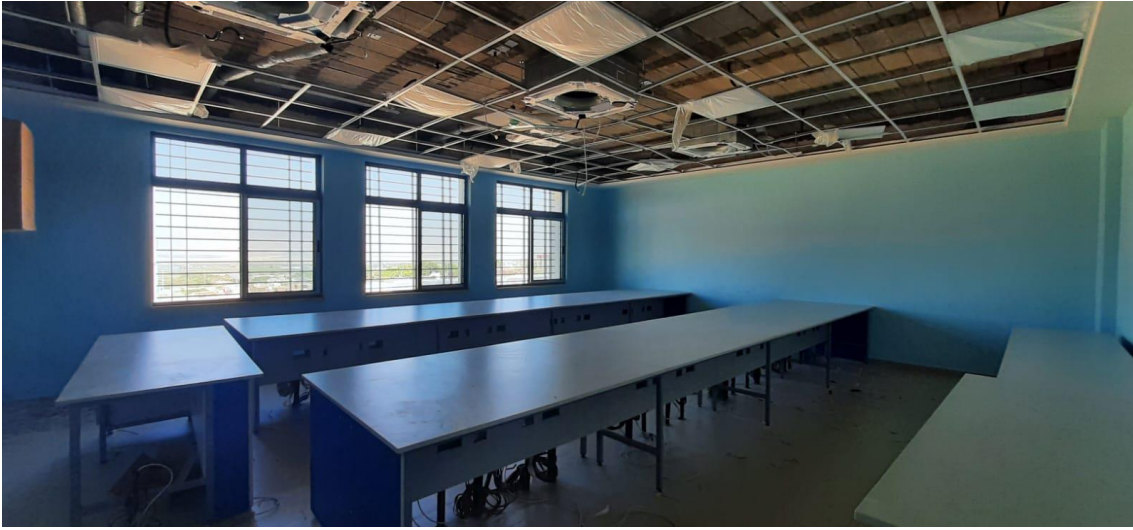
(Figure: 11)



Inspecting the progress of painting works at the rooms and corridors

(Figure: 12)





(Figure: 13)

The team observed the installation of furniture at the laboratories, teacher center and the classrooms



(Figure: 13 & 14)

(Figure: 14)





Inspecting porcelain tiling, fixed sanitary fixture and installed wooden doors at the wet areas

(Figure: 15)



Marking fixing wooden doors accessories

(Figure: 16)



Viewing the progress in the suspended ceiling works

(Figure: 17)





Duct work and floor tiling at the multi-purpose hall

(Figure: 18)