



SKEP III Home Office Support Site Visit Report

**WAHIB
MEDANAT**
consultant engineers

Consultant	Wahib Medanat Consultant Engineer	Rep No.	22-22082022
Contractor	Dijlah Establishment Constr. Contracting	Tender No.	(11/2019/USAID/SKEP/3/S) Schools for a Knowledge Economy Project (SKEP) - Phase (3) Package (1, 2)
Site Name	Thahr Al Sarow Basic School for Boys- Jerash	Day/ Date	Mon. 22/08/2022
Duration of Project	450 Calendar Days	Total Project Budget	8,314,983.735 JD

No.	Visitors		Remarks
1	Suhair Amarin	- Project Dir./Head of Architectural Department	
2	Hashem Abu Kwaik	- Senior Civil Engineer	
3	Akram Khammes	- Head of Electrical Department	
4	Marwan Sonna'a	- Head of Mechanical Department	
5	Hasan Shaqboua	- Quality Control Manager	

Visit Notes

No.	Description
1	The team inspected the installation of the shading at the external yards.
2	The team observed interlock tiling for the sidewalks around the school building.
3	The team inspected planting planters with trees.
4	The supervision team observed the blockwork done at the shafts.
5	The team inspected applying grout for the porcelain tiles.



No.	Description
6	The team observed painting work for the pergola.
7	The team inspected the aluminum works and data works.



Project ID
Sign on Site





WAHIB
MEDANAT
consultant engineers



General view of the project site

(Figure: 01, 02, 03 & 04)

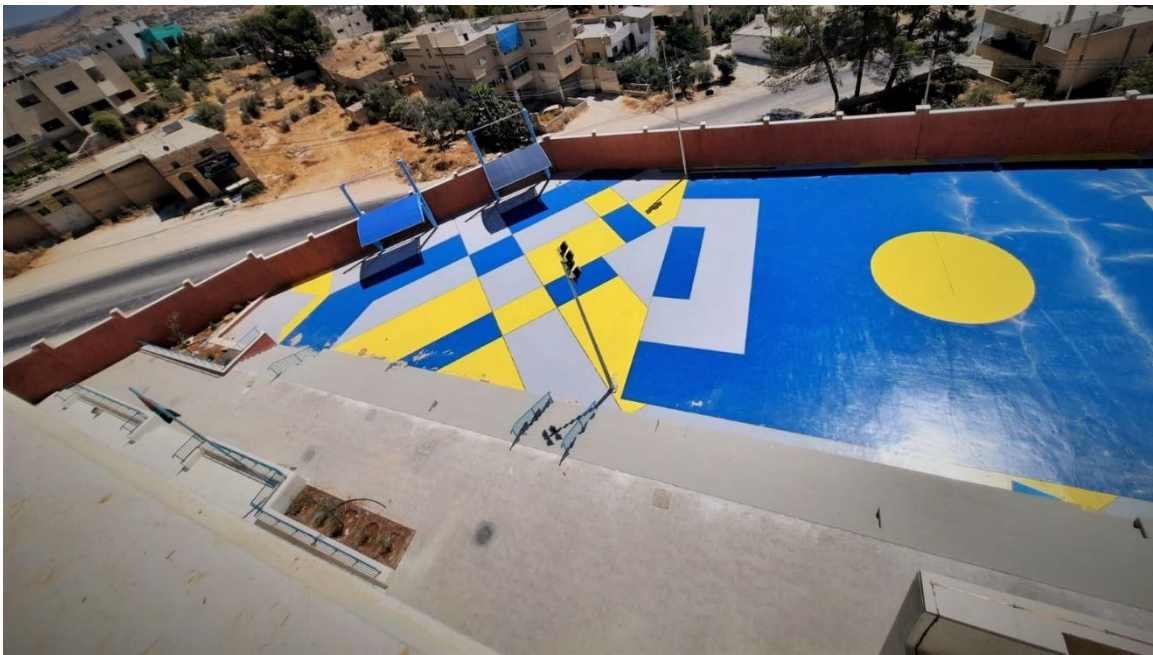
(Figure: 01)



(Figure: 02)



(Figure: 03)



(Figure: 04)



The Supervision team inspecting the execution of external works

(Figure: 05)



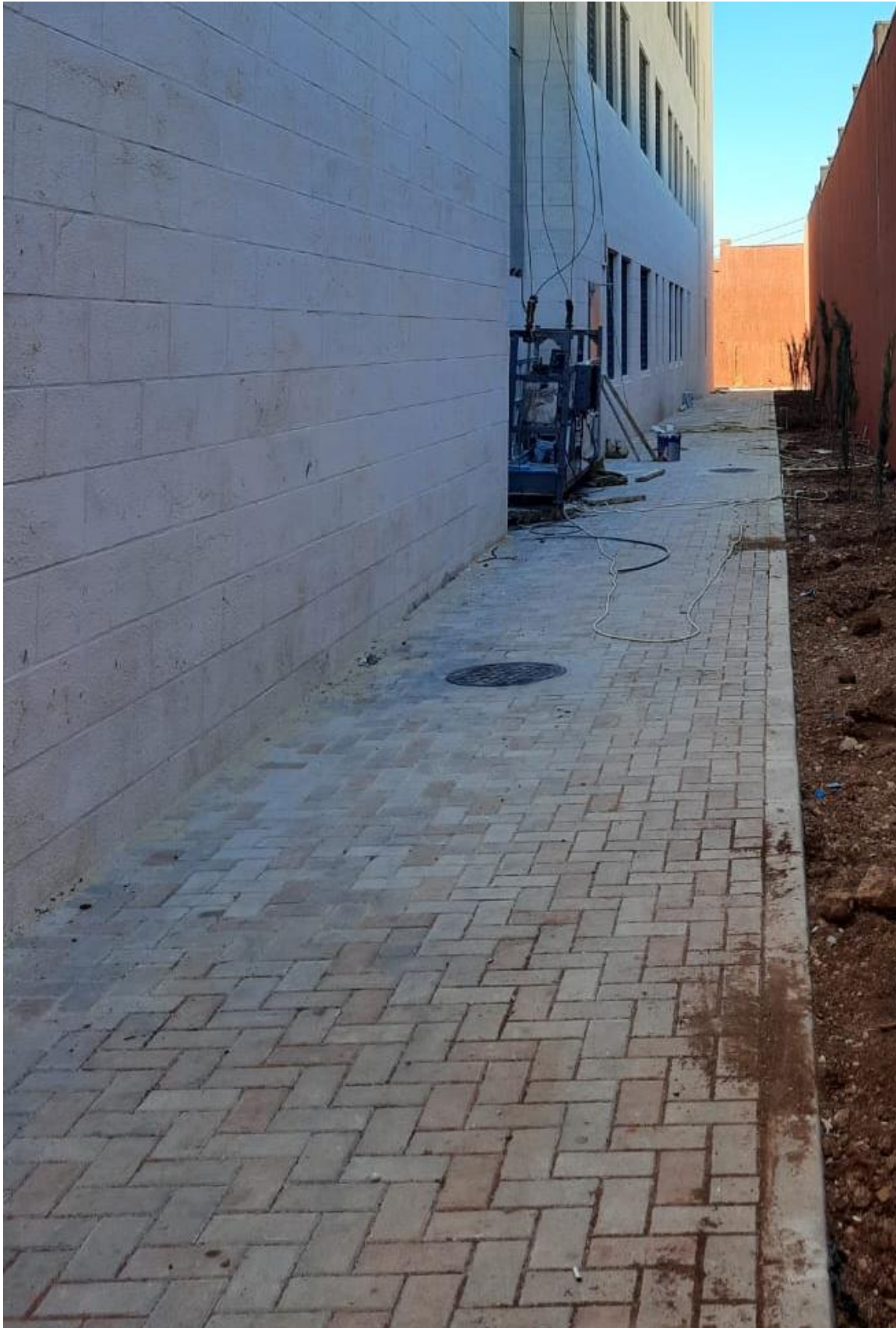
Shadings
fixation

(Figure: 06)



Observing
planting
planters with
trees

(Figure: 07)



Interlock tiling works around the school building

(Figure: 08)



The team inspecting granite coping and of fire hose cabinets installation at the corridors

(Figure: 09)



Observing
aluminum
windows
fixation

(Figure: 10)



Installation of data systems

(Figure: 11)



The team inspected floor tiling and painting work

(Figure: 12)



executed
works for
the curtain
wall

(Figure: 13)