



Consultant	Wahib Medanat Consultant Engineer	Rep No.	12-25062022
Contractor	Derar Saraireh & Sons for Engineering & Contracting	Tender No.	(11/2019/USAID/SKEP/3/S) Schools for a Knowledge Economy Project (SKEP) - Phase (3) Package (1, 2)
Site Name	Al Khansa' Basic Mixed School- Al Balqa	Day/ Date	Sat. 25/06/2022
Duration of Project	450 Calendar Days	Total Project Budget	9,789,417.840 JD

No.	Visitors		Remarks
1	Suhair Amarin	- Project Dir./Head of Architectural Department	
2	Hashem Abu Kwaik	- Senior Civil Engineer	
3	Akram Khammes	- Head of Electrical Department	
4	Marwan Sonna'a	- Head of Mechanical Department	
5	Hasan Shaqboua	- Quality Control Manager	

Visit Notes

No.	Description
1	The team inspected the current works in the excavations of the playing yard and the external wall.
2	The team inspected the current works of the granite coping continuation at the window jamb.



3	The team inspected the wall tiles and the relation with the door frame at the child care at the (KG) area.
4	The team inspected the installed electrical sockets with cover at the (KG) area to ensure that the work is executed according to the approved workshop drawings.
5	The team found out that the defected delivered cabinets for the (KG) had been rectified.
6	The team inspected the current works going on in the multi-purpose hall.
7	The team inspected the preparation by the Contractor to install the granite coping at the corridors, chipping of plastering at the coping line to ensure compliance with drawings.
8	The team inspected the executed expansion joints at the corridors.
9	The team observed that there is some waving in the plastering and painting at the corridors and ceilings. The Contractor was requested to rectify
10	The team inspected the executed granite skirting for the staircases.
11	The team inspected the executed granite coping at the window jamb and observed a contradiction with the approved sample regarding the prominence of the granite piece. The Contractor was requested to rectify.
12	The team observed that the relation between the Plaster limit and flashing requires refinement
13	The team inspected the parapet at the roof and observed a broken stone coping. The Contractor was requested to replace
14	The team inspected the wet areas' in the building to check the status of all executed items.



Project ID
Sign on Site





General view of the project site

(Figure: 01, 02, 03, 04 & 05)

(Figure: 01)



(Figure: 02)



(Figure: 03)



(Figure: 04)



(Figure: 05)



The team inspected the current stage of work in the excavations of the playing yard and the external wall

(Figure: 06 & 07)

(Figure: 06)



(Figure: 07)



The team inspected the parapet at the roof and observed a broken stone coping. The Contractor was requested to replace

(Figure: 08)



(Figure: 09)

The team observed that the relation between the Plaster limit and flashing requires refinement

(Figure: 09 & 10)



(Figure: 10)



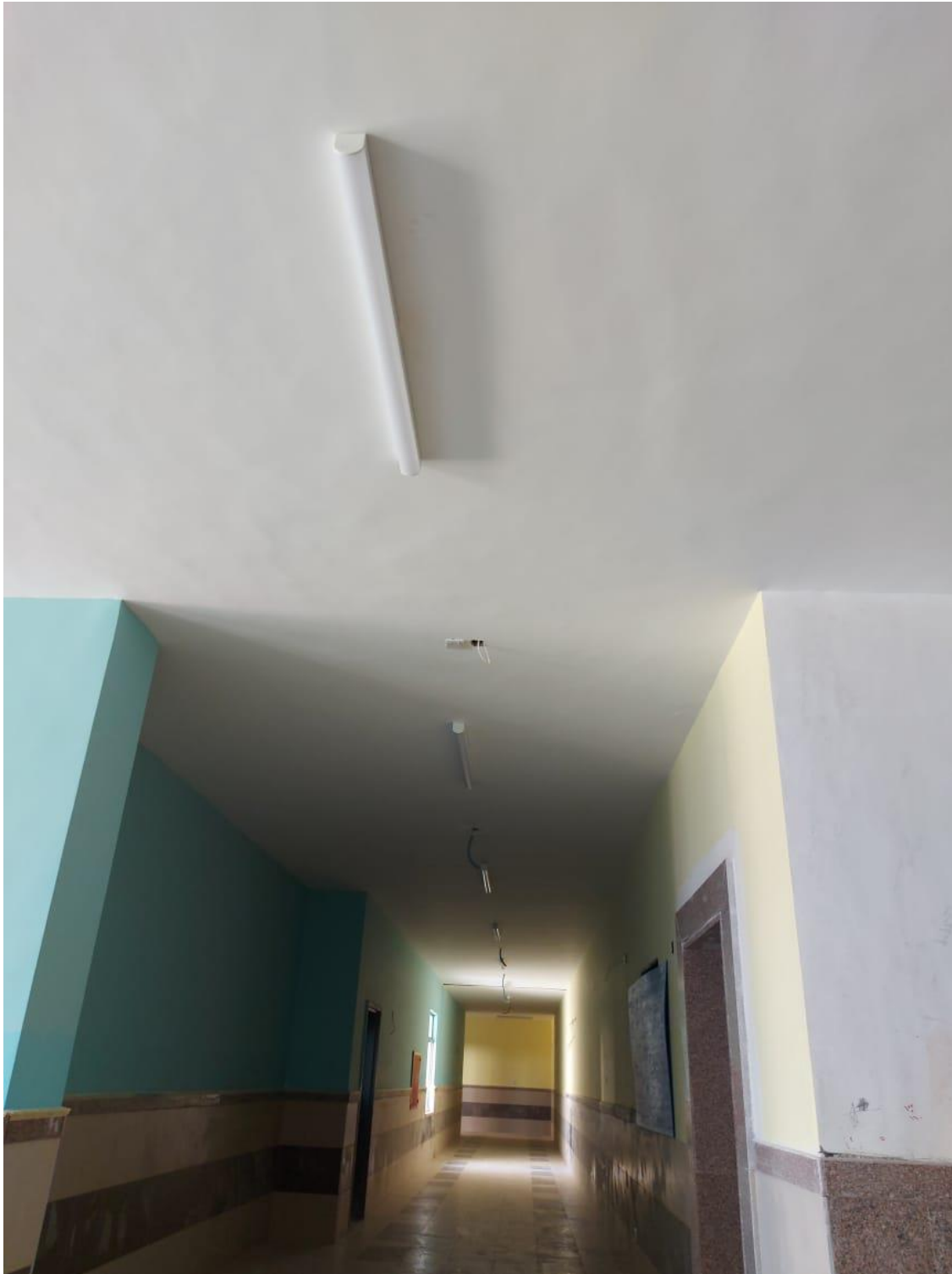
(Figure: 11)

The team inspected the wet areas' in the building to check the status of all executed items



(Figure: 11 & 12)

(Figure: 12)



The team observed that there is some waving in the plastering and painting at the corridors and ceilings. The Contractor was requested to rectify

(Figure: 13)



(Figure: 14)

(Before)

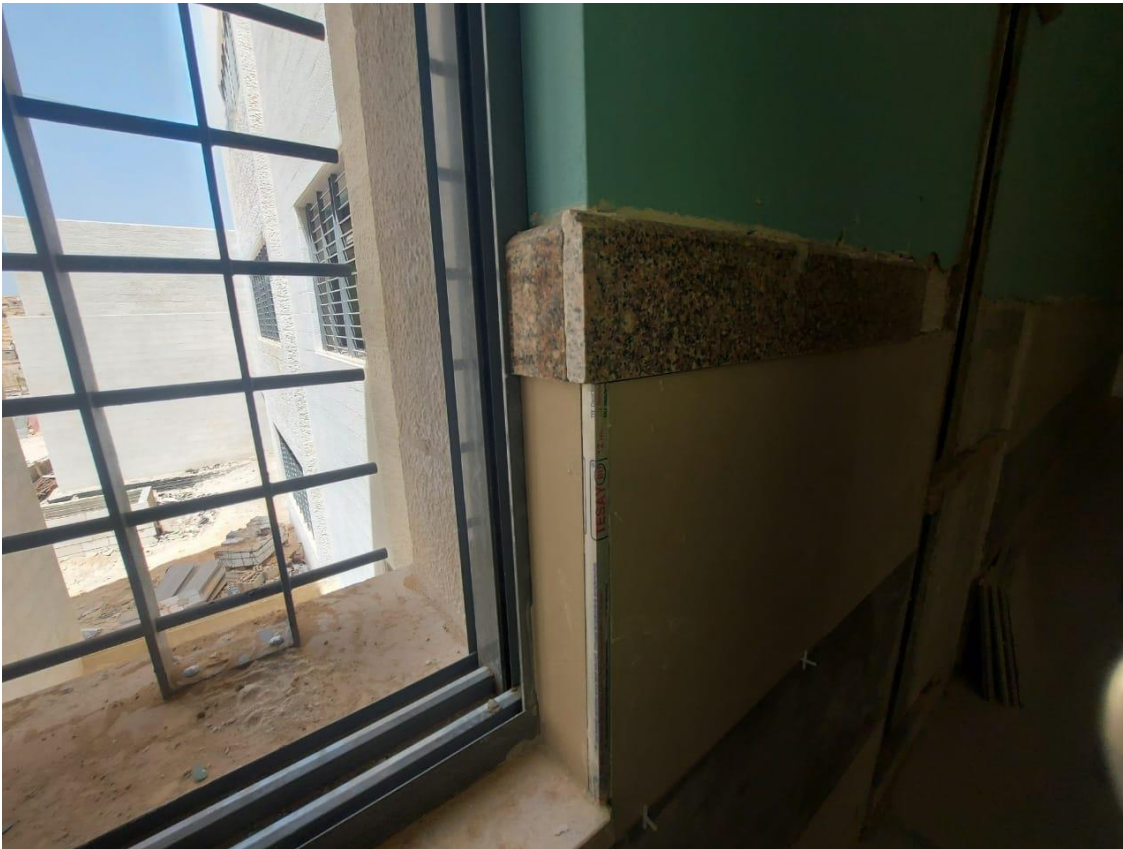
The team inspected the progress of work at the multi-purpose hall

(Figure: 14 & 15)



(After)

(Figure: 15)



The team previously observed a contradiction of the granite coping with the approved sample regarding the prominence of the granite piece

(Before)

(Figure: 16)



The Contractor rectified according to the approved sample

(After)

(Figure: 17)



(Figure: 18)

The Contractor replaced the previously defected cabinets in accordance to the Engineer instructions



(Figure: 18 & 19)

(Figure: 19)



The team inspected granite cladding and coping work at the staircase

(Figure: 20)