



SKEP III Home Office Support Site Visit Report

**WAHIB
MEDANAT**
consultant engineers

Consultant	Wahib Medanat Consultant Engineer	Rep No.	21-23052022
Contractor	Dijlah Establishment Constr. Contracting	Tender No.	(11/2019/USAID/SKEP/3/S) Schools for a Knowledge Economy Project (SKEP) - Phase (3) Package (1, 2)
Site Name	Hay Al Iskan Basic Mixed School- Jerash	Day/ Date	Mon. 23/05/2022
Duration of Project	450 Calendar Days	Total Project Budget	8,314,983.735 JD

No.	Visitors		Remarks
1	Suhair Amarin	- Project Dir./Head of Architectural Department	
2	Hashem Abu Kwaik	- Senior Civil Engineer	
3	Akram Khammes	- Head of Electrical Department	
4	Marwan Sonna'a	- Head of Mechanical Department	
5	Hasan Shaqboua	- Quality Control Manager	

Visit Notes

No.	Description
1	The team inspected the installed main steel doors at the entrances of the building and observed deviation from the workshop drawings and architectural details. Difficulties in using the external door handle were observed due to wrong dimensions of steel sections.
2	The team discussed with the Contractor the suggestions to resolve the defects related to the granite cladding and coping at the corridors and staircases' areas.
3	The team observed dissimilarity regarding the ends of the parapets at the two sides of the main staircase at the same landing. Also, the team observed wide gap between the parapet cover and the skirting. The Contractor was requested to rectify.
4	The team conducted checking for some dimensions related to the execution of the main staircase.



No.	Description
5	The team inspected the executed suspended ceiling and the relation with the drop beam at the staircase area.
6	The team observed that the Contractor used plastic accessories for aluminum pivot windows not conforming to the technical specifications knowing that the Engineer approved the use of aluminum accessories upon the Contractor's submittal. The Contractor was requested to replace the plastic accessories with the approved aluminum accessories as per contract's requirements.
7	The team stressed that the Contractor should apply appropriate protection to the wooden doors since the team observed that a number of doors were damaged and also scratched in the laminated face (Formica).
8	Upon the observation of the team, the Contractor was requested to conduct checking for all corners at the tiled areas.
9	The team inspected the executed works at the art room.
10	The team inspected the delivered wooden cabinets and found a number of defects including the laminated partitions, un-vertical ironmongery handles and defects in beech wood sections.
11	The team observed that the Contractor started with works related to the amphitheater seats at the playing yard area.
12	The team discussed with the Contractor the required works for the guard house and the drinking fountain and the relation with the boundary walls.
13	The team inspected the works at the guard house and observed no stiffener columns at the parapet. The Contractor was requested to create stiffener columns with the follow up of the supervision site engineer.
14	The team observed defects in the window sill dimensions and the limit of the bead at the wet area. The Contractor was requested to rectify.



Project ID Sign on Site





General view of the project site

(Figure: 01, 02, 03, 04 & 05)

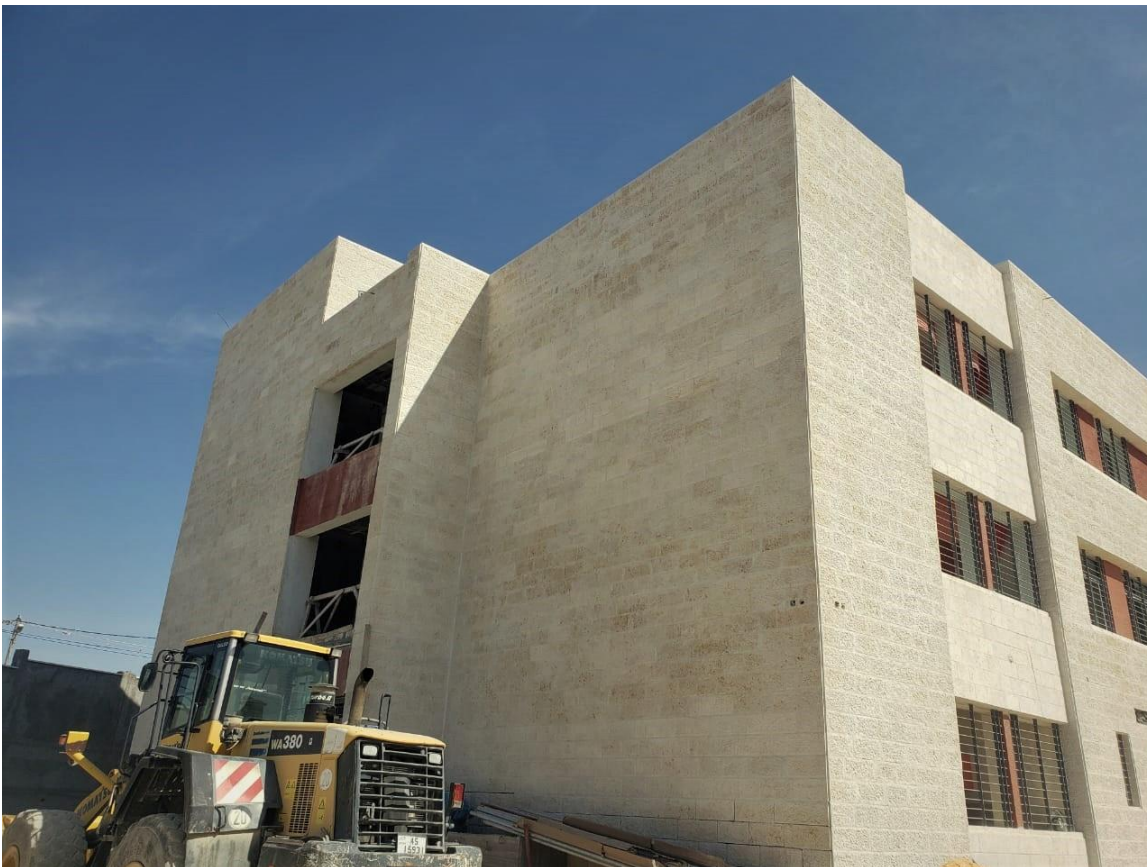
(Figure: 01)



(Figure: 02)



(Figure: 03)



(Figure: 04)



(Figure: 05)



The team discussed with the Contractor the required works for the guard house and the drinking fountain and the relation with the boundary walls

(Figure: 06)



The team observed that the Contractor started with works related to the amphitheater seats at the playing yard area

(Figure: 07)



(Figure: 08)

The team inspected the installed main steel doors at the entrances of the building and observed deviation from the workshop drawings and architectural details. Difficulties in using the external door handle were observed due to wrong dimensions of steel sections

(Figure: 08 & 09)



(Figure: 09)



(Figure: 10)

The team discussed with the Contractor the suggestions to resolve the defects related to the granite cladding and coping at the corridors and staircases' areas



(Figure: 10 & 11)

(Figure: 11)



(Figure: 12)

The team observed dissimilarity regarding the ends of the parapets at the two sides of the main staircase at the same landing

(Figure: 12 & 13)



(Figure: 13)



Also, the team observed wide gap between the parapet cover and the skirting. The Contractor was requested to rectify

(Figure: 14)



The team conducted checking for some dimensions related to the execution of the main staircase

(Figure: 15)



The team inspected the executed suspended ceiling and the relation with the drop beam at the staircase area

(Figure: 16)



Installing the data cabinet

(Figure: 17)



(Figure: 18)

The team stressed that the Contractor should apply appropriate protection to the wooden doors since the team observed that a number of doors were damaged and also scratched in the laminated face (Formica) The team stressed that the Contractor should apply appropriate protection to the wooden doors since the team observed that a number of doors were damaged and also scratched in the laminated face (Formica)

(Figure: 18 & 19)



(Figure: 19)



Upon the observation of the team, the Contractor was requested to conduct checking for all corners at the tiled areas

(Figure: 20)



The Contractor used plastic accessories for aluminum windows. Therefore, he was requested to replace the plastic accessories with the approved aluminum ones as per contract's requirements

(Figure: 21)



The team observed defects in the window sill dimensions and the limit of the bead at the wet area. The Contractor was requested to rectify

(Figure: 22)



The team inspected tiling work at the wet area

(Figure: 23)



The team inspected the executed works at the art room

(Figure: 24)



(Figure: 25)

The team inspected the delivered wooden cabinets and found a number of defects including the laminated partitions, unvertical ironmongery handles and defects in beech wood sections



(Figure: 25 & 26)

(Figure: 26)