



Consultant	Wahib Medanat Consultant Engineer	Rep No.	13-16022022
Contractor	Derar Saraireh & Sons for Engineering & Contracting	Tender No.	(11/2019/USAID/SKEP/3/S) Schools for a Knowledge Economy Project (SKEP) - Phase (3) Package (1, 2)
Site Name	Khadija Bint Khwailed Basic Mixed School- Shouna Janoubia	Day/ Date	Wed. 16/02/2022
Duration of Project	450 Calendar Days	Total Project Budget	9,789,417.840 JD

No.	Visitors		Remarks
1	Suhair Amarin	- Project Dir./Head of Architectural Department	
2	Hashem Abu Kwaik	-Senior Civil Engineer	
3	Akram Khammes	- Head of Electrical Department	
4	Marwan Sonna'a	-Head of Mechanical Department	
5	Hasan Shaqboua	-Quality Control Manager	

Visit Notes

No.	Description
1	The supervision team discussed with Contractor the executed stairs at the multi-purpose hall and requested the Contractor to submit as built sketch to resolve the issue of the prominence of the stairs into the dark color porcelain floor line.
2	The team discussed with the Contractor the wall tile cladding for corridors and the top level of cladding and the relation with window sills at corridors and the lockers below window levels.
3	The team requested the Contractor to replace the broken window sills.



4	The team inspected the floor tiled areas and observed minor number of tiles have teething, the Contractor was requested to replace.
5	The team requested the Contractor to apply means of protection for the executed porcelain floor tiles.
6	The team inspected the executed wall tiling at the wet areas.
7	The team requested the Contractor to finalize his work in the electrical outlets at walls.
8	The team requested the Contractor to finalize the work in the internal shafts.
9	The team discussed with the Contractor the installation of fire cabinets in the corridors and the connection with the installation of granite at walls and the prominence of the said cabinets.
10	The team discussed with the Contractor the installation of mechanical cabinets in the corridors and the connection with the wall porcelain and granite.
11	The team observed some stone areas in the facades need to be cleaned as shown in the photos.
12	The team noticed that the Contractor has rectified the deviation in plastering level at the corridor.
13	The supervision team requested the Contractor to replace one door frame due to the thickness which does not comply with the technical specification.



Project ID Sign on Site



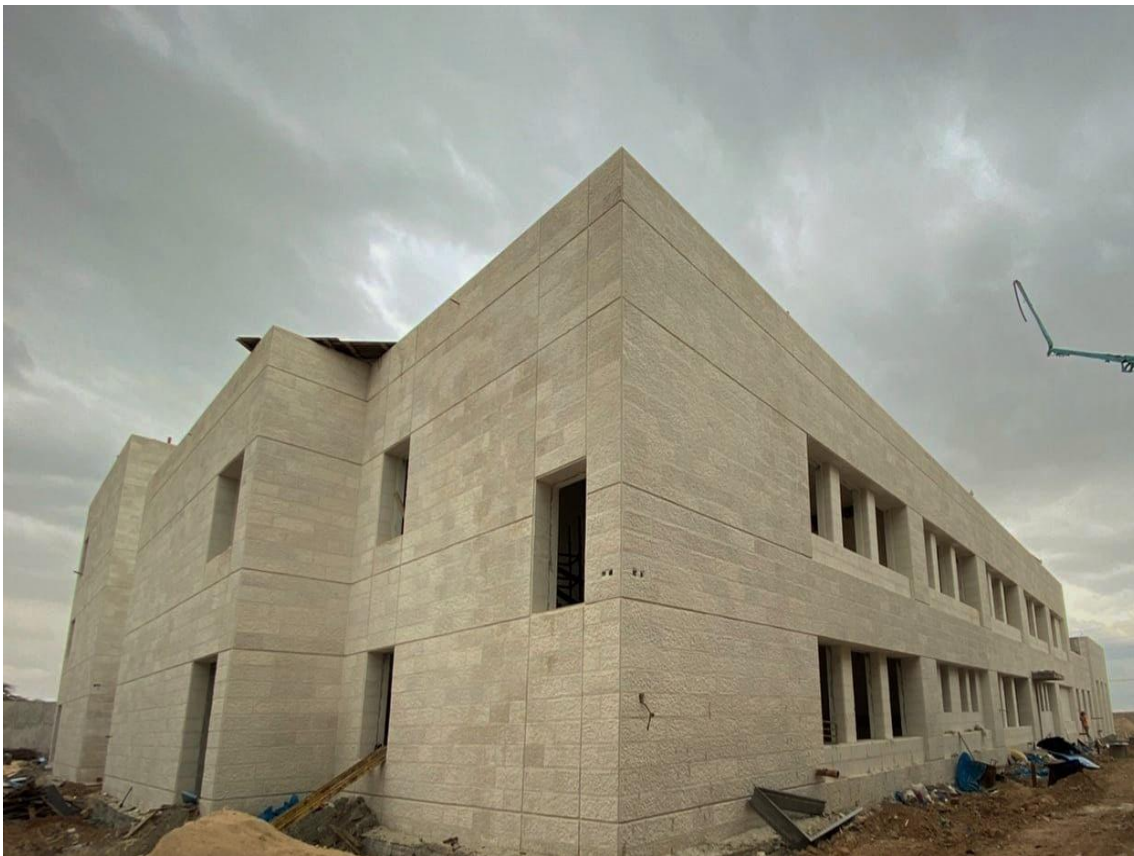
Temperature check, sterilization and signing visitors' attendance sheet at the entrance of the site, complying with Covid-19 Protocol



General view
of the project

(Figures: 01, 02, 03
& 04)

(Figure: 01)



(Figure: 02)



(Figure: 03)



(Figure: 04)



The team observed some stone areas in the facades need to be cleaned as shown in the photos

(Figure: 05)



(Figure: 06)

The supervision team discussed with Contractor the executed stairs at the multi-purpose hall and requested the Contractor to submit as built sketch to resolve the issue of the prominence of the stairs into the dark color porcelain floor line



(Figure: 06 & 07)

(Figure: 07)



The team noticed that the Contractor has rectified the deviation in plastering level at the corridor

(Figure: 08)



The supervision team requested the Contractor to replace one door frame due to the thickness which does not comply with the technical specification

(Figure: 09)



The team discussed with the Contractor the wall tile cladding for corridors and the top level of cladding and the relation with window sills at corridors and the lockers below window levels

(Figure: 10)



(Figure: 11)

The team inspected the floor tiled areas and observed minor number of tiles have teething, the Contractor was requested to replace

(Figure: 11, 12 & 13)



(Figure: 12)



(Figure: 13)



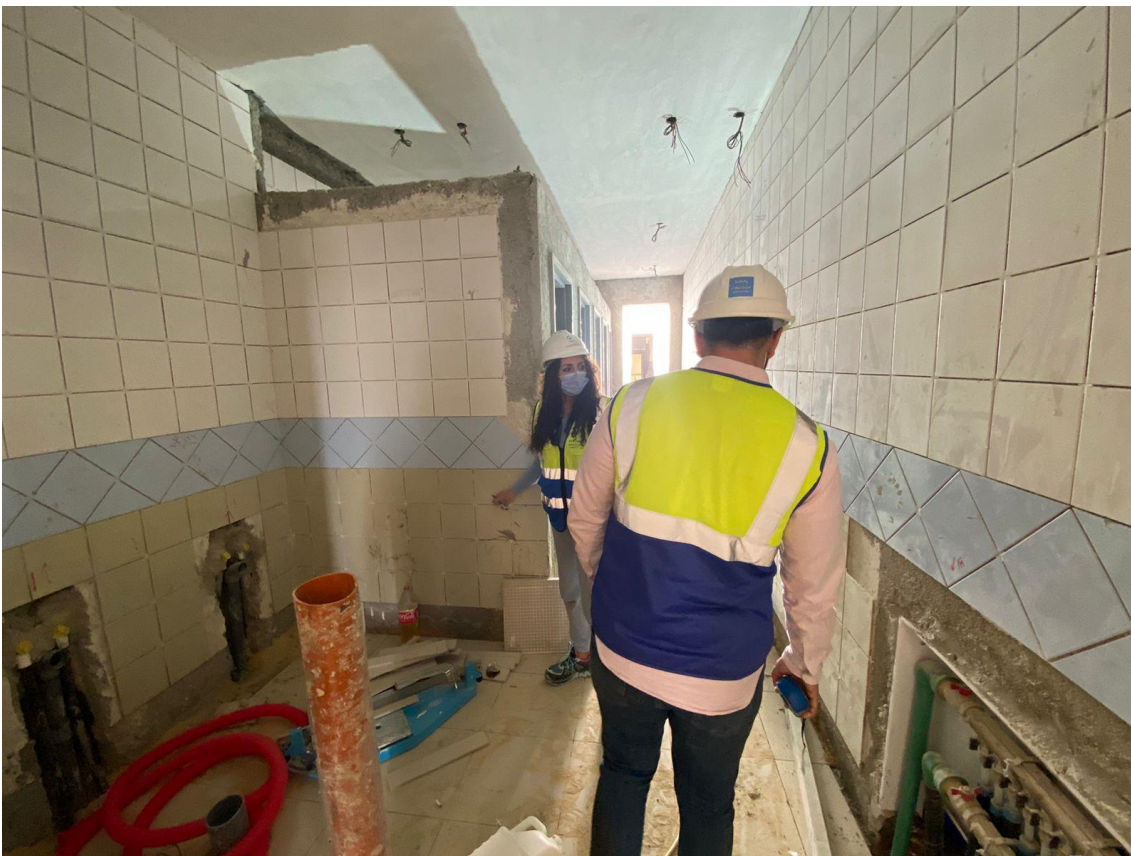
Inspecting the execution of wall tiles

(Figure: 14)



(Figure: 15)

The team inspected the executed wall tiling at the wet areas



(Figure: 15 & 16)

(Figure: 16)



The team discussed with the Contractor the installation of fire cabinets in the corridors and the connection with the installation of granite at walls and the prominence of the said cabinets

(Figure: 17)



The team requested the Contractor to finalize his work in the electrical outlets at walls

(Figure: 18)



The Contractor was requested to replace the broken window sill

(Figure: 19)