



School for Knowledge Economy Project (SKEP) Phase III – Package 1

Monthly Progress Report

No. 20

July, 2022



**WAHIB
MEDANAT**
consultant engineers

☎ +962 6 5821206

+962 6 5817847

+962 79 7650576

✉ +962 6 5862357

✉ mail@medanat.com

✉ info@medanat.com

www www.medanat.com

TÜV
AUSTRIA
HELLAS

No.: 20001210004621

Management System as per
EN ISO 9001 : 2015

TÜV
AUSTRIA
HELLAS

No.: 20152200003939

Management System as per
ISO 45001 : 2018

| Table of Contents

	Page
 Table of Contents	2
1 Project Particulars	5
1.1 Contract Main Information	5
1.2 Executive Summary	7
A- Um-Aldananir Basic Mixed School	7
B- Al Khansa' Basic Mixed School	8
C- Khadija Bint Khwailed Basic Mixed School	9
2 Consultant Organisation Project Staff	10
3 Summary of Activities	13
3.1 Um-Al Dananir Basic Mixed School	13
3.2 Al Khansa' Basic Mixed School	13
3.3 Khadija Bint Khwailed Basic Mixed School	13
3.4 Mobilization Tracking Log	13
3.5 Log of Activities	13
4 Project Time and Duration	14
5 Project Contract & V.O's	16
6 Cash Flow	17
7 Progress	19
7.1 Average Progress	19
7.2 Um Al Dananir Basic Mixed School - Balqa	25
7.3 Al Khansa'a Basic Mixed School - Balqa	31
7.4 Khadija Bint Khwailed Basic Mixed School- Balqa	37
7.5 Engineer comments on work progress	43
7.6 Tracking Tasks in CPM	45
8 Submitted Materials	46
8.1 Summary of Submitted Materials	46
8.2 Shop Drawings & Submittal Tracking LOG	47
8.3 Materials Submittal Vendor List	47
9 Correspondence Tracking Logs	48

10 Non-conformance Report Tracking Log	48
10.1 HSE	48
10.2 QCs	48
Um-Al Dananir Basic Mixed School-Balqa	48
Al Khansa' Basic Mixed School- Balqa	50
Khadija Bint Khwailed Basic Mixed School- Al Shouna Al Janoubia	51
10.3 NCRs	53
11 Request For Information Tracking Logs	53
11.1 RFIs-Designer	53
11.2 RFIs-Contractor	53
12 Site problems and Solutions	53
13 Meetings and Site Visits	54
13.1 Coordination & Progress Meetings	54
13.2 Site Visits	55
13.3 Regular Monthly Site Visits (Home Office Support)	56
14 Manpower Logs	101
14.1 Um-Al Dananir Basic Mixed School- Balqa	101
14.2 Al Khansa' Basic Mixed School- Balqa	101
14.3 Khadija Bint Khwailed Basic Mixed School- Balqa	101
15 Daily Plant and Equipment	101
15.1 Um-Al Dananir Basic Mixed School- Balqa	101
15.2 Al Khansa' Basic Mixed School- Balqa	101
15.3 Khadija Bint Khwailed Basic Mixed School- Balqa	101
16 Lab-test Results Tracking Log	102
16.1 Um-Al Dananir Basic Mixed School- Balqa	102
16.2 Al Khansa' Basic Mixed School- Balqa	102
16.3 Khadija Bint Khwailed Basic Mixed School- Balqa	102
16.4 Comments on Laboratory Testing	102
17 Obstacles Log (Site Obstacles)	102
17.1 Um Al Dananir Basic Mixed School – Al Balqa	103
17.2 Khadija Bint Khwailed Basic Mixed School- Balqa	107
18 Weather Condition	108

18.1	Um-Al Dananir Basic Mixed School- Balqa	108
18.2	Al Khansa' Basic Mixed School- Balqa	108
18.3	Khadija Bint Khwailed Basic Mixed School- Balqa	108
19	 Selected Photos	109
19.1	Um-Aldananir Basic Mixed School- Al Balqa	109
19.2	Al Khansa Basic Mixed School- Al Balqa	112
19.3	Khadija Bint Khwailed Basic Mixed School – Al-Shouna Al-Janobia	115
20.1	Um Al Dananir Basic Mixed School -Balqa	117
20.2	Al Khansa'a Basic Mixed School - Balqa	117
20.3	Khadija Bint Khwailed Basic Mixed School - Balqa	117
21	 Website Reports Links	117
21.1	Daily Reports Updated daily	117
21.2	Weekly Reports Updated weekly	117
21.3	Monthly Reports Updated monthly	117
21.4	CMTO Inspection Reports Updated weekly	117
21.5	Quality Reports Updated weekly	117
22	 Training	117
22.1	Training:	118
21.2	Training Sessions:	119
A-	Training Sessions July 2022	119

1 | Project Particulars

1.1 Contract Main Information

Contract Name:	School for Knowledge Economy Project (SKEP) Phase III – Package (1)
Owner:	Ministry of Education (MOE)
Funded By:	United States Agency for International Development (USAID)
Consultant:	Wahib Medanat Consultant Engineers
Project Management:	Trigon Associates
Contractor:	Derar Saraireh & Sons for Engineering & Contracting
Contract No.:	1/2020/USAID/SKEP/3/1
Commencement Date:	19/12/2020
Time for Substantial Completion of the Work:	Um-Aldananir Basic Mixed School - Al-Balqa: 450 Days
	Al Khansa' Basic Mixed School Al-Balqa: 450 Days
	Khadija Bint Khwailed Basic Mixed School - Al-Shouna Al-Janobia: 450 Days
Time to Complete the Work Including Punch List Items:	Within 14 Calendar days for each School from the date of taking over committee inspection
Contract Amount at Award:	9,789,417.840 JOD
Amount of Liquidated Damages:	Um-Aldananir Basic Mixed School- Al-Balqa: 2000 JOD/ Day but not to exceed 15% of total amount for the School

	Al Khansa' Basic Mixed School Al-Balqa: 2000 JOD/ Day but not to exceed 15% of the total amount for the School
	Khadija Bint Khwailed Basic Mixed School - Al-Shouna Al-Janobia: 2000 JOD/ Day but not to exceed 15% of total amount for the School
Defects Liability Period:	(730) Calendar Days for all Civil & Electromechanical works from the date of Substantial Completion for each school including the maintenance of plantation works
Maintenance Guarantee for Defects Liability Period:	5% of the final Contract Sum
Percentage of Retention from Interim Payment Certificate:	10% of each payment
Limit of Retention Money:	5% of Contract Sum as amended
Period of Time for Payment to be made after Certification by the Engineer:	60 Calendar Days
Minimum Amount of Interim Payment Certificate:	JOD 300,000 (Three hundred thousand Jordanian Dinar) for all schools under the Package
Payment for Imported Materials	40% upon receipt of approved bill of lading and another 20% when stored on site to the Engineer's approval
Payment for Local Materials and Equipment	60% and restricted to cement and reinforcing steel when stored on site to the Engineer's approval.

1.2 Executive Summary

The Ministry of Education represented by the Ministry of Public Works & Housing has received a grant from USAID to finance the construction of:

School for Knowledge Economy Project (SKEP) – Phase III – Package (1)

The package consists of construction of three (3) Schools at different locations in Al-Balqa.

The project consists of construction of new classrooms, computer labs, laboratories, public utilities...etc., and site works for group of schools as shown in the Tender Documents, the Schools are:

A- Um-Aldananir Basic Mixed School

The project consists of a school building of five floors with a total approximate built-up area of 6258 m², in addition guard house, rainwater harvesting tank and other site works as deemed in the drawings and BOQ.

Main Elements

Land Area =11709 m ²			External Works = 5665 m ²					no. of floors = 5		
Floor	F.F.L	Area (m ²)	No.of classroom grade (1-3)	No.of classroom grade (4-10)	No . Of KG classroom	Student for each classroom	Student in floor	General Toilets	Mens Toilets	Womens Toilets
Basement	96.9/97.5	1070	-	-	-	-	-	HC TOILET	1	1
Ground	102	1669	-	-	4	24	96	2 KG toilets child care toilet	-	-
First	105.64	1664	12	4	-	36	576	H.c TOILETS	2	2
Second	109.28	1664	-	12	-	36	432	H.C TOILET	-	2
Roof	112.92	90	-	-	-	-	-	-	-	-
External Works	-	5451	-	-	-	-	-	-	-	-
Total		11608		32		-	1104	-	3	5

❑ Location Link:

[Um Al Dananir Basic Mixed-Balqa](#)

❑ More Information Link

<https://www.medanat.site/s3p1s1-01>

B- Al Khansa' Basic Mixed School

The project consists of a school building of five floors with a total approximate built-up area of 6432 m², in addition guard house, sewage collection tank, water tank and other site works as deemed in the drawings and BOQ.

Main Elements

Land Area =9226 m2			External Works = 3802 m2					no. of floor = 5		
Floor	F.F.L	Area (m2)	No.of classroom grade (1-3)	No.of classroom grade (4-10)	No . Of KG classroom	Student for each classroom	Student in floor	General Toilets	Mens Toilets	Womens Toilets
Ground	89.55	1619.11	-	-	4	24	96	General 1 HC toilet and 2*2 KG Toilets with 2 KG HC Toilets	1*2	1*2
First	93.45	1693.35	9	-	-	36	324	1 HC Toilet	1*4	1*6
Second	97.35	1508.29	-	8	-	36	288	1*9 with 1 HC toilets	-	-
Third	101.25	1511.24	-	6	-	36	216	1*7with 1 HC toilets	-	-
Roof	105.15	99.12	-	-	-	-	-	-	-	-
External Works	---	3802	-	-	-	-	-	-	-	-
Total		10233.11		27		-	924	-	6	8

❏ Location Link:

[Al Khansa'a Basic Mixed - Balqa](#)

❏ More Information Link

<https://www.medanat.site/s3p1s2-01>

C- Khadija Bint Khwailed Basic Mixed School

The project consists of a school building of four floors with a total approximate built-up area of 5341.18 m², in addition guard house, sewage collection tank, water tank and other site works as deemed in the drawings and BOQ.

Main Elements

Land Area =17320 m2			External Works = 7013.5 m2					no. of floor = 4		
Floor	F.F.L	Area (m2)	No.of classroom grade (1-3)	No.of classroom grade (4-10)	No . Of KG classroom	Student for each classroom	Student in floor	General Toilets	Mens Toilets	Womens Toilets
Ground	101	2273.07	-	-	4	24	96	General 1 HC toilet and 2*2 KG Toilets with 2 KG HC Toilets	1*2	1*2
First	104.64	1816.25	9	6	-	36	540	1 HC Toilet	1*4	1*6
Second	108.28	1160.75	-	8	-	36	288	1*9 with 1 HC toilets	-	-
Roof	111.77	91.11	-	-	-	-	-	-	-	-
External Works	-	-	-	-	-	-	-	-	-	-
Total		5341.18	27		-	-	924	-	6	8

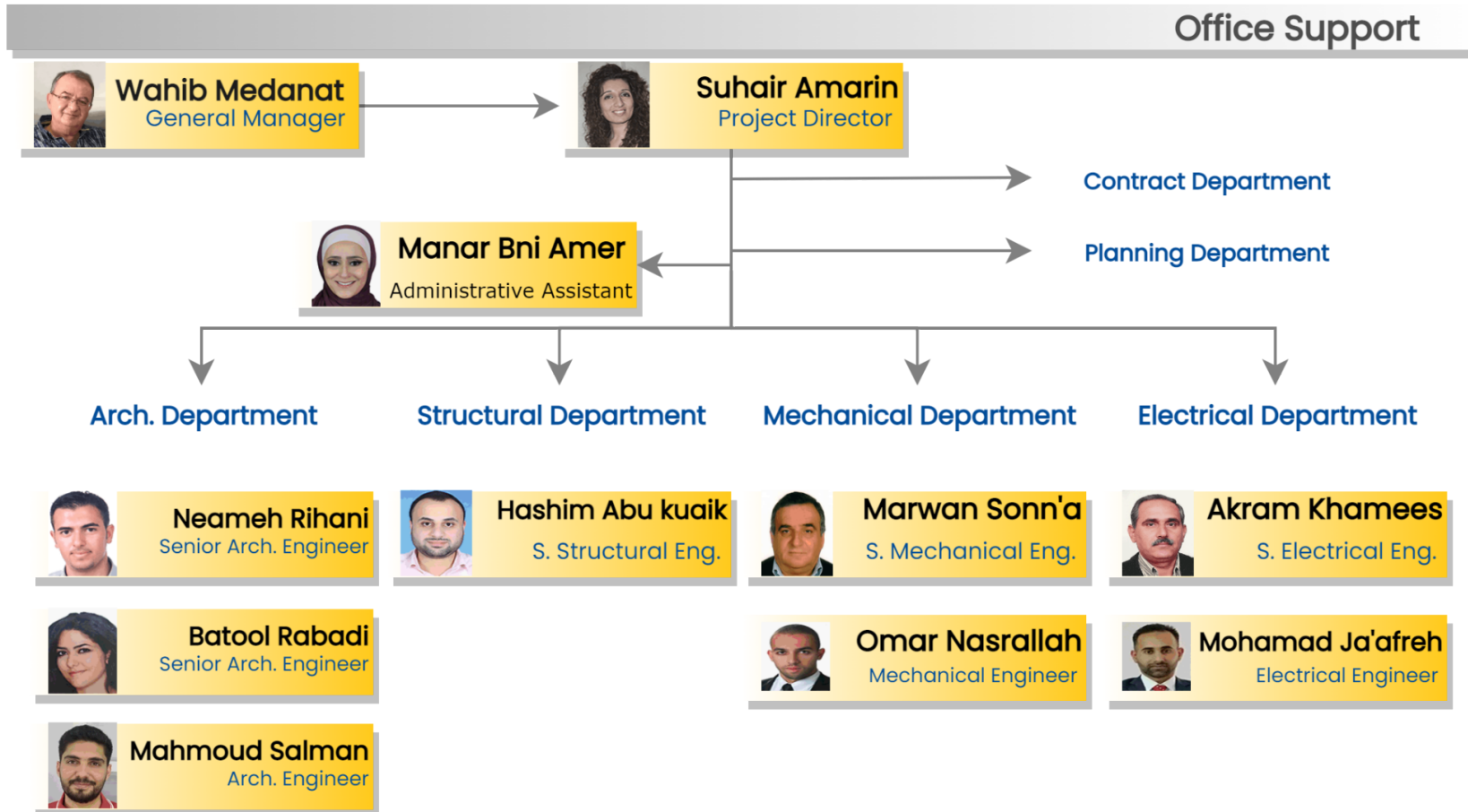
❑ Location Link:

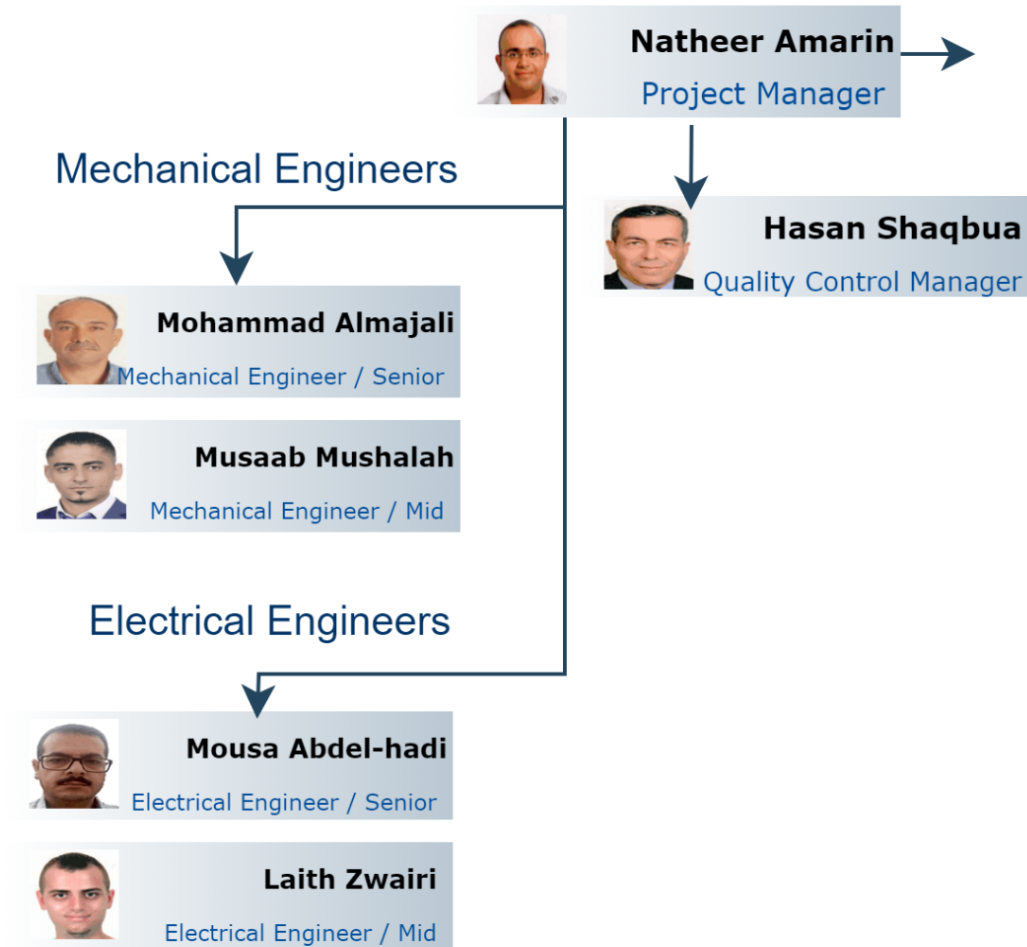
[Khadija Bint Khwailed Basic Mixed - Balqa](#)

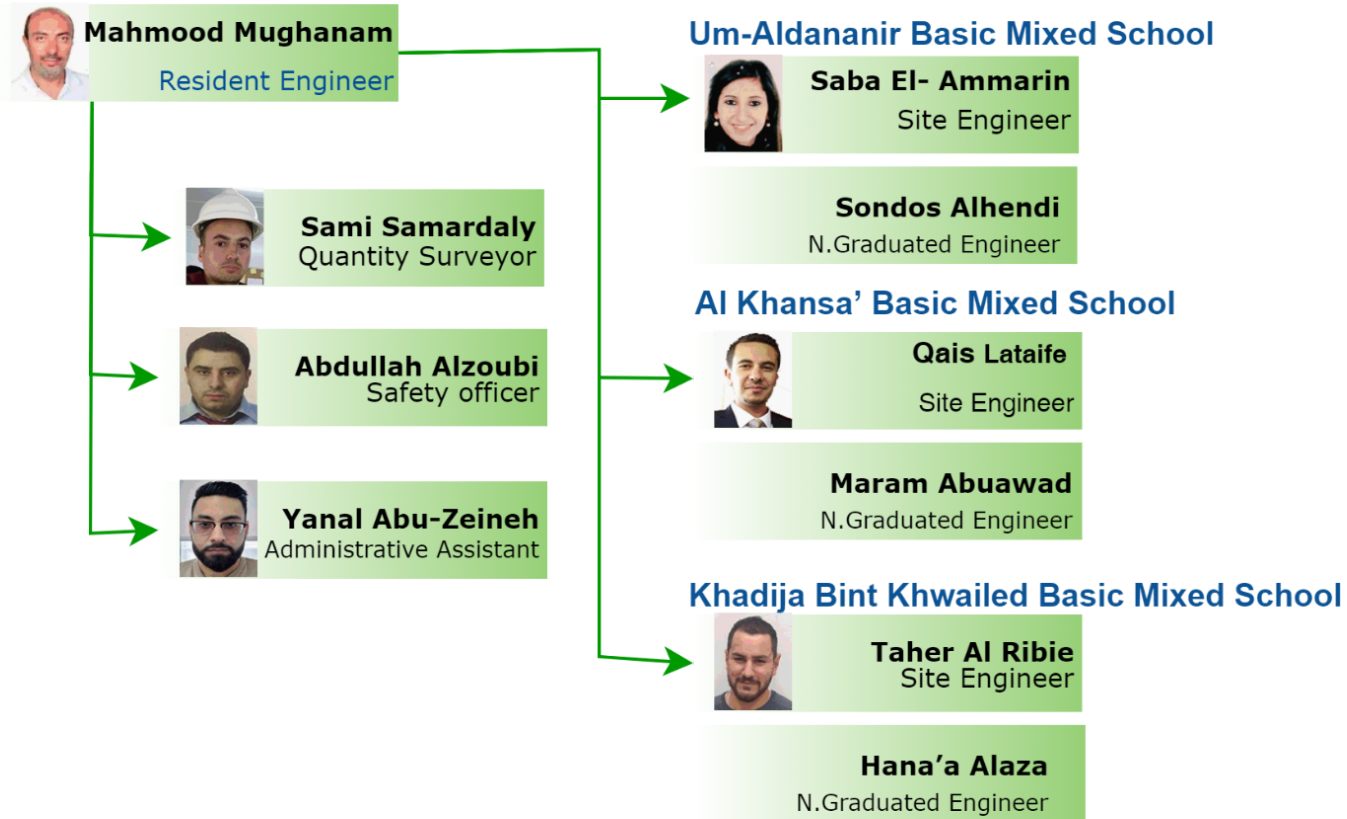
❑ More Information Link

<https://www.medanat.site/s3p1s3-01>

2 | Consultant Organisation Project Staff







website Link: <https://www.medanat.site/skepiii-sta>

3 | Summary of Activities

3.1 Um–Al Dananir Basic Mixed School

- Summary of Activities Link:
- https://docs.google.com/spreadsheets/d/e/2PACX-1vTQOXtV1mCjuSQn_jxZUciEfyLhObkgMBSH6pAlchfG0o-aYEgo8fLG8ixT3B-wOpuzQ8lk8PQ-DBBW/pubhtml?gid=0&single=true

3.2 Al Khansa' Basic Mixed School

- Summary of Activities Link:
- https://docs.google.com/spreadsheets/d/e/2PACX-1vTQOXtV1mCjuSQn_jxZUciEfyLhObkgMBSH6pAlchfG0o-aYEgo8fLG8ixT3B-wOpuzQ8lk8PQ-DBBW/pubhtml?gid=834925315&single=true

3.3 Khadija Bint Khwailed Basic Mixed School

- Summary of Activities Link:
- https://docs.google.com/spreadsheets/d/e/2PACX-1vTQOXtV1mCjuSQn_jxZUciEfyLhObkgMBSH6pAlchfG0o-aYEgo8fLG8ixT3B-wOpuzQ8lk8PQ-DBBW/pubhtml?gid=234544642&single=true

3.4 Mobilization Tracking Log

- https://docs.google.com/spreadsheets/d/e/2PACX-1vTahO-T_zvUoJbdpFO10JsWaHsOj4CTOzs4KiLraH65gofWKVh0jWxWtUqWcLiFawGiSOITemoEhVUy/pubhtml?gid=0&single=true

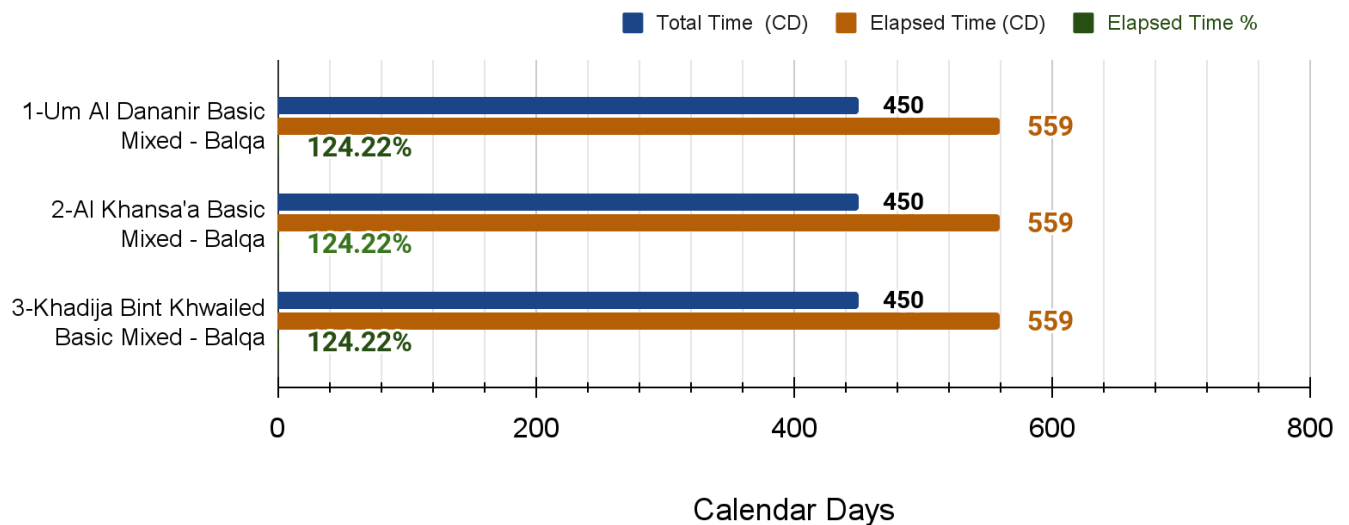
3.5 Log of Activities

- <https://docs.google.com/spreadsheets/d/e/2PACX-1vSWZO4ttx9mmazEymcXTm2mF6fVdogHMEoGVW2xwI9y8rXAR7D0cKP MHXZwC1lcAkHGDOu0vWwU3vZ/pubhtml?gid=0&single=true>

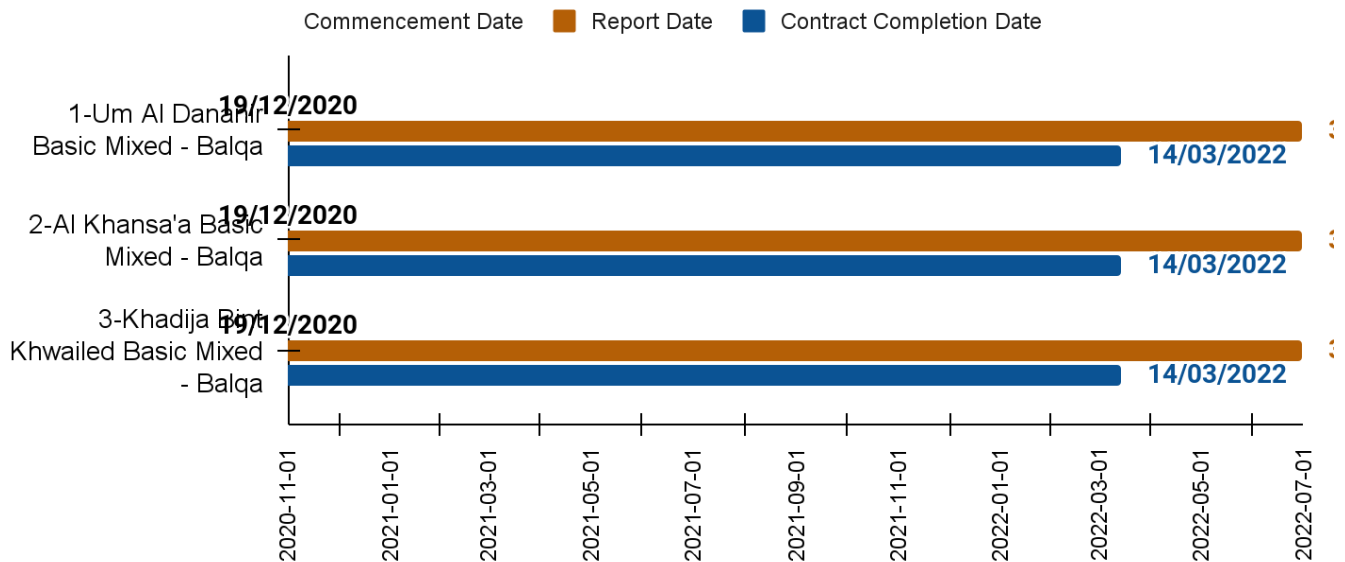
4 | Project Time and Duration

PGK 1 Report Date	2022-06-30				
Site Name	Contract Duration (CD)	Time Extension (CD)	Total Time (CD)	Elapsed Time (CD)	Elapsed Time %
1-Um Al Dananir Basic Mixed - Balqa	450	0	450	559	124.22%
2-Al Khansa'a Basic Mixed - Balqa	450	0	450	559	124.22%
3-Khadija Bint Khwailed Basic Mixed - Balqa	450	0	450	559	124.22%

SKEP III PKG 1 Time Chart



Site Name	Commencement Date	Report Date	Contract Completion Date
1-Um Al Dananir Basic Mixed - Balqa	2020-12-19	2022-06-30	2022-03-14
2-Al Khansa'a Basic Mixed - Balqa	2020-12-19	2022-06-30	2022-03-14
3-Khadija Bint Khwailed Basic Mixed - Balqa	2020-12-19	2022-06-30	2022-03-14



5 | Project Contract & V.O's

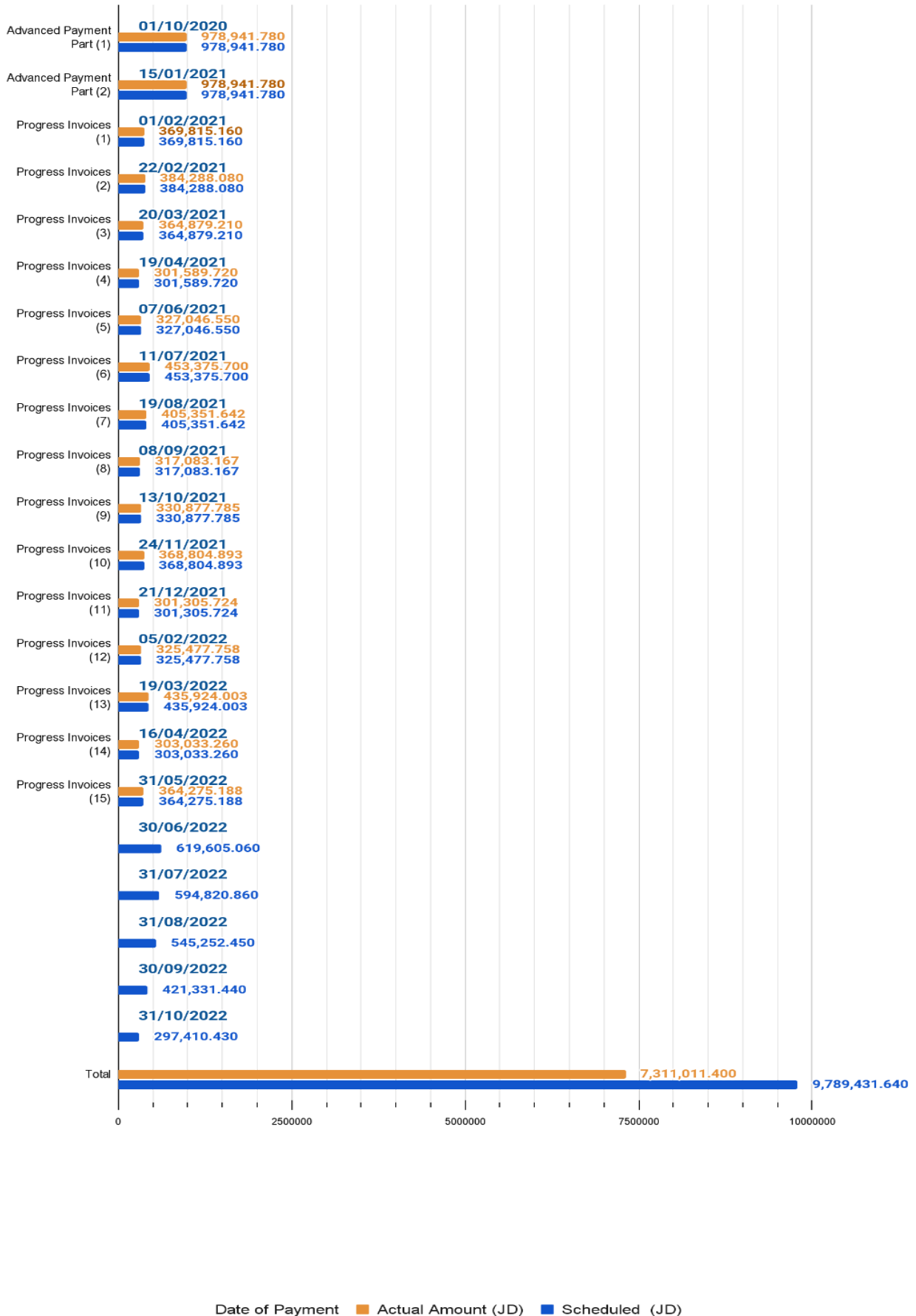
Package 1 Contract & V.O's							
School Name	Contract Value JD		Provisional Sums JD		General Requirements JD		V.O.
	Original	After 6 % Deduction	Geotechnical Tests	Conveying System	Value	After 6% Deduction	V.O Description
Khadija Bint Khwailed Basic Mixed School	3,001,919.70	2,821,804.52	11,000.00	25,000.00	53,206.74	50,014.34	Additional quantities for boundary wall Cable tray item rate change
Um Al Dananir Basic Mixed School	3,260,798.90	3,065,150.97	11,000.00	25,000.00	66,614.69	62,617.81	Cable tray item rate change
Al Khansa' Basic Mixed School-Al Balqa	3,758,331.10	3,532,831.23	11,000.00	25,000.00	52,126.79	48,999.18	Cable tray item rate change
Total	10,021,049.70	9,419,786.72	108,000.00		171,948.22	161,631.33	

6 | Cash Flow

Package 1 Cash Flow

Payment	Date of Payment	Actual Amount (JD)	Scheduled (JD)
Advanced Payment Part (1)	01/10/2020	978,941.780	978,941.780
Advanced Payment Part (2)	15/01/2021	978,941.780	978,941.780
Progress Invoices (1)	01/02/2021	369,815.160	369,815.160
Progress Invoices (2)	22/02/2021	384,288.080	384,288.080
Progress Invoices (3)	20/03/2021	364,879.210	364,879.210
Progress Invoices (4)	19/04/2021	301,589.720	301,589.720
Progress Invoices (5)	07/06/2021	327,046.550	327,046.550
Progress Invoices (6)	11/07/2021	453,375.700	453,375.700
Progress Invoices (7)	19/08/2021	405,351.642	405,351.642
Progress Invoices (8)	08/09/2021	317,083.167	317,083.167
Progress Invoices (9)	13/10/2021	330,877.785	330,877.785
Progress Invoices (10)	24/11/2021	368,804.893	368,804.893
Progress Invoices (11)	21/12/2021	301,305.724	301,305.724
Progress Invoices (12)	05/02/2022	325,477.758	325,477.758
Progress Invoices (13)	19/03/2022	435,924.003	435,924.003
Progress Invoices (14)	16/04/2022	303,033.260	303,033.260
Progress Invoices (15)	31/05/2022	364,275.188	364,275.188
	30/06/2022		619,605.060
	31/07/2022		594,820.860

Package 1- Cash Flow



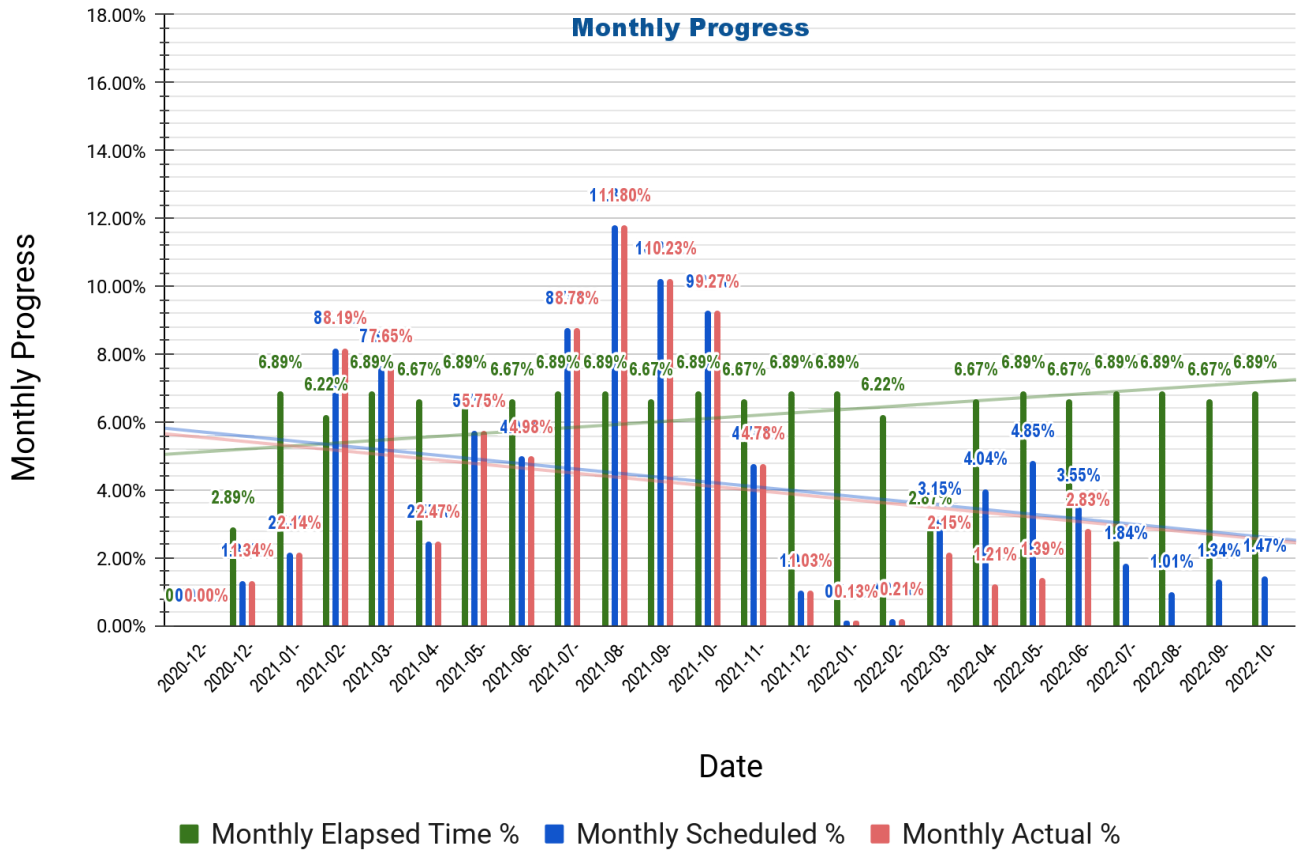
7 | Progress

7.1 Average Progress

Package 1 Monthly Progress

Date	Monthly Elapsed Time %	Monthly Scheduled %	Monthly Actual %
2020-12-19	0.00%	0.00%	0.00%
2020-12-31	2.89%	1.34%	1.34%
2021-01-31	6.89%	2.14%	2.14%
2021-02-28	6.22%	8.19%	8.19%
2021-03-31	6.89%	7.65%	7.65%
2021-04-30	6.67%	2.47%	2.47%
2021-05-31	6.89%	5.75%	5.75%
2021-06-30	6.67%	4.98%	4.98%
2021-07-31	6.89%	8.78%	8.78%
2021-08-31	6.89%	11.80%	11.80%
2021-09-30	6.67%	10.23%	10.23%
2021-10-31	6.89%	9.27%	9.27%
2021-11-30	6.67%	4.78%	4.78%
2021-12-31	6.89%	1.03%	1.03%
2022-01-31	6.89%	0.13%	0.13%
2022-02-28	6.22%	0.21%	0.21%
2022-03-31	2.87%	3.15%	2.15%
2022-04-30	6.67%	4.04%	1.21%
2022-05-31	6.89%	4.85%	1.39%
2022-06-30	6.67%	3.55%	2.83%
2022-07-31	6.89%	1.84%	
2022-08-31	6.89%	1.01%	
2022-09-30	6.67%	1.34%	
2022-10-31	6.89%	1.47%	
Total	147.57%	100.00%	86.33%

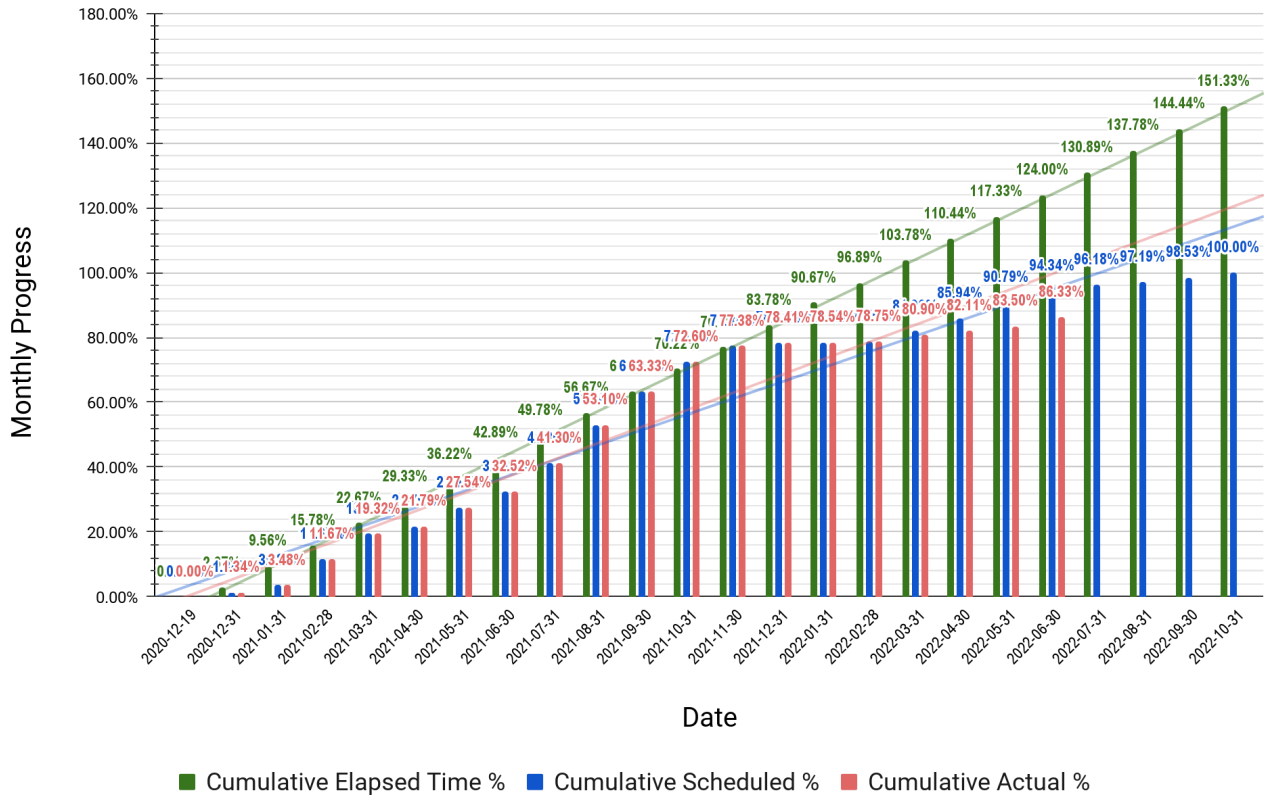
Package 1



Package 1 Cumulative Progress			
Date	Cumulative Elapsed Time %	Cumulative Scheduled %	Cumulative Actual %
2020-12-19	0.00%	0.00%	0.00%
2020-12-31	2.67%	1.34%	1.34%
2021-01-31	9.56%	3.48%	3.48%
2021-02-28	15.78%	11.67%	11.67%
2021-03-31	22.67%	19.32%	19.32%
2021-04-30	29.33%	21.79%	21.79%
2021-05-31	36.22%	27.54%	27.54%
2021-06-30	42.89%	32.52%	32.52%
2021-07-31	49.78%	41.30%	41.30%
2021-08-31	56.67%	53.10%	53.10%
2021-09-30	63.33%	63.33%	63.33%
2021-10-31	70.22%	72.60%	72.60%
2021-11-30	76.89%	77.38%	77.38%
2021-12-31	83.78%	78.41%	78.41%
2022-01-31	90.67%	78.54%	78.54%
2022-02-28	96.89%	78.75%	78.75%
2022-03-31	103.78%	81.90%	80.90%
2022-04-30	110.44%	85.94%	82.11%
2022-05-31	117.33%	90.79%	83.50%
2022-06-30	124.00%	94.34%	86.33%
2022-07-31	130.89%	96.18%	
2022-08-31	137.78%	97.19%	
2022-09-30	144.44%	98.53%	

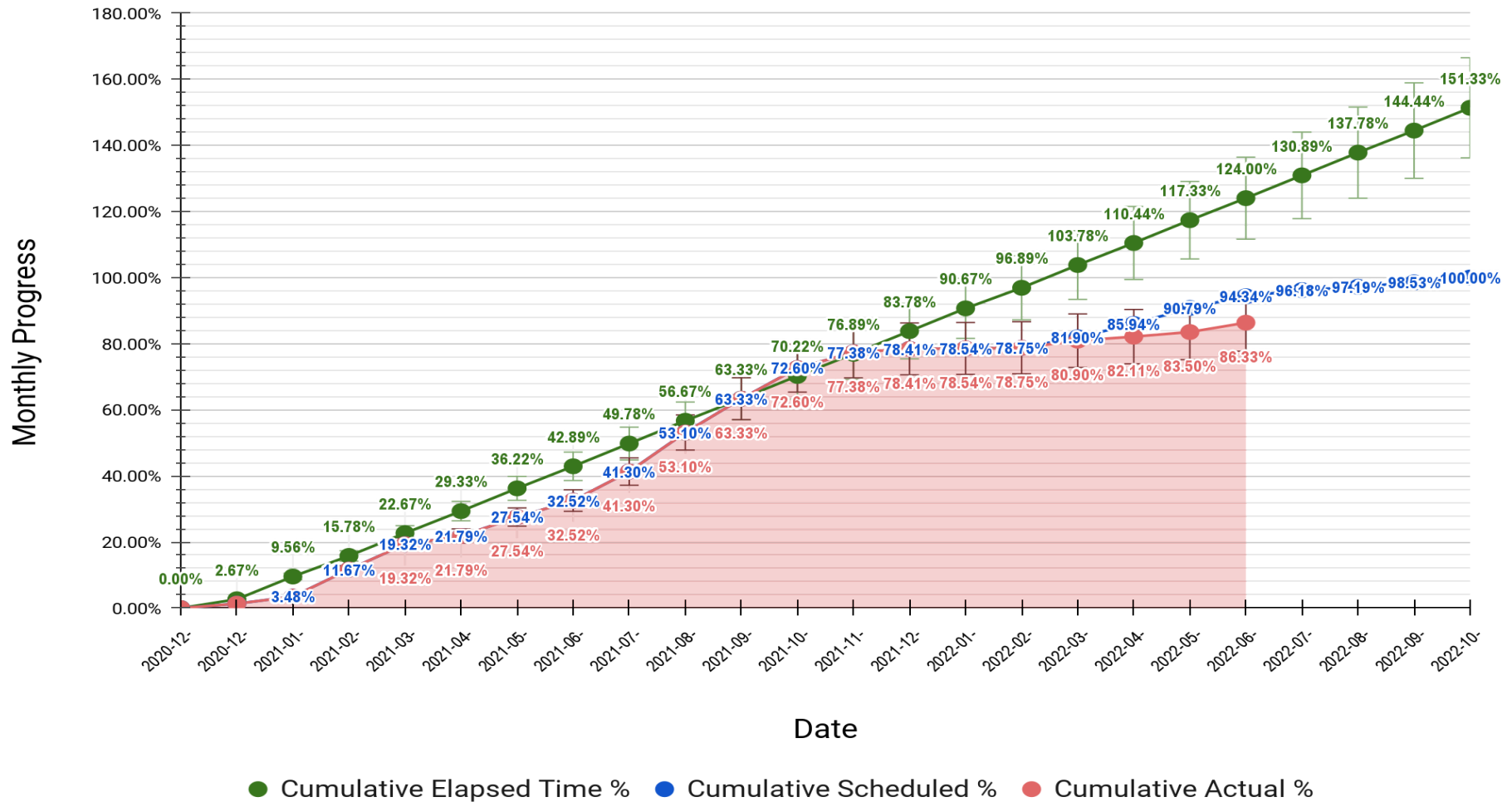
Package 1

Cumulative Progress



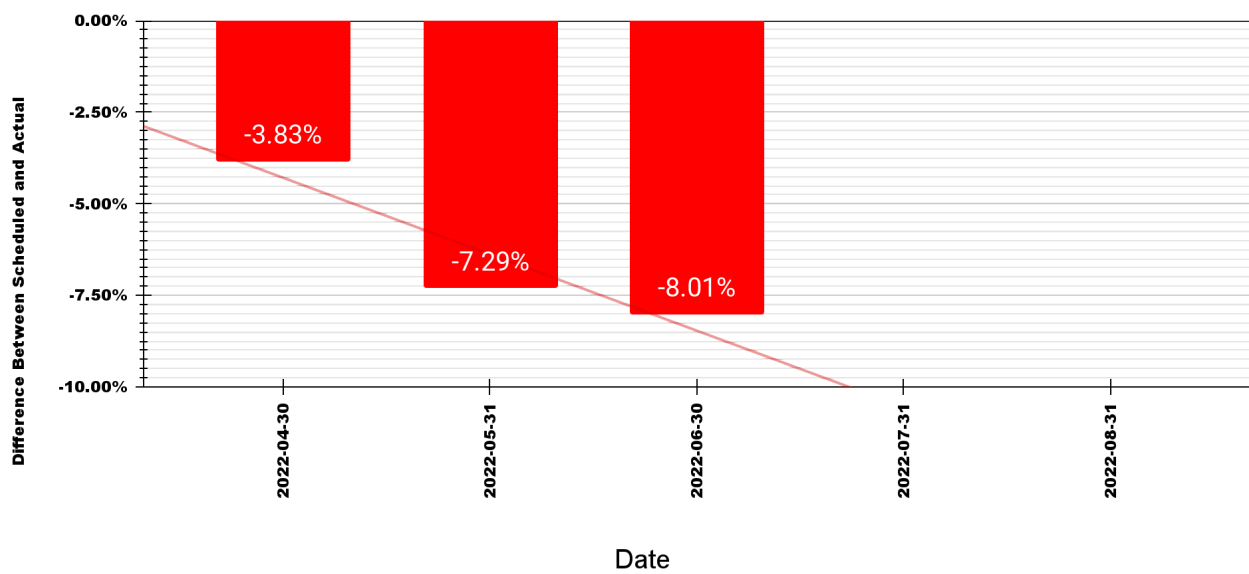
Package 1 Average For Three Sites

Cumulative Progress



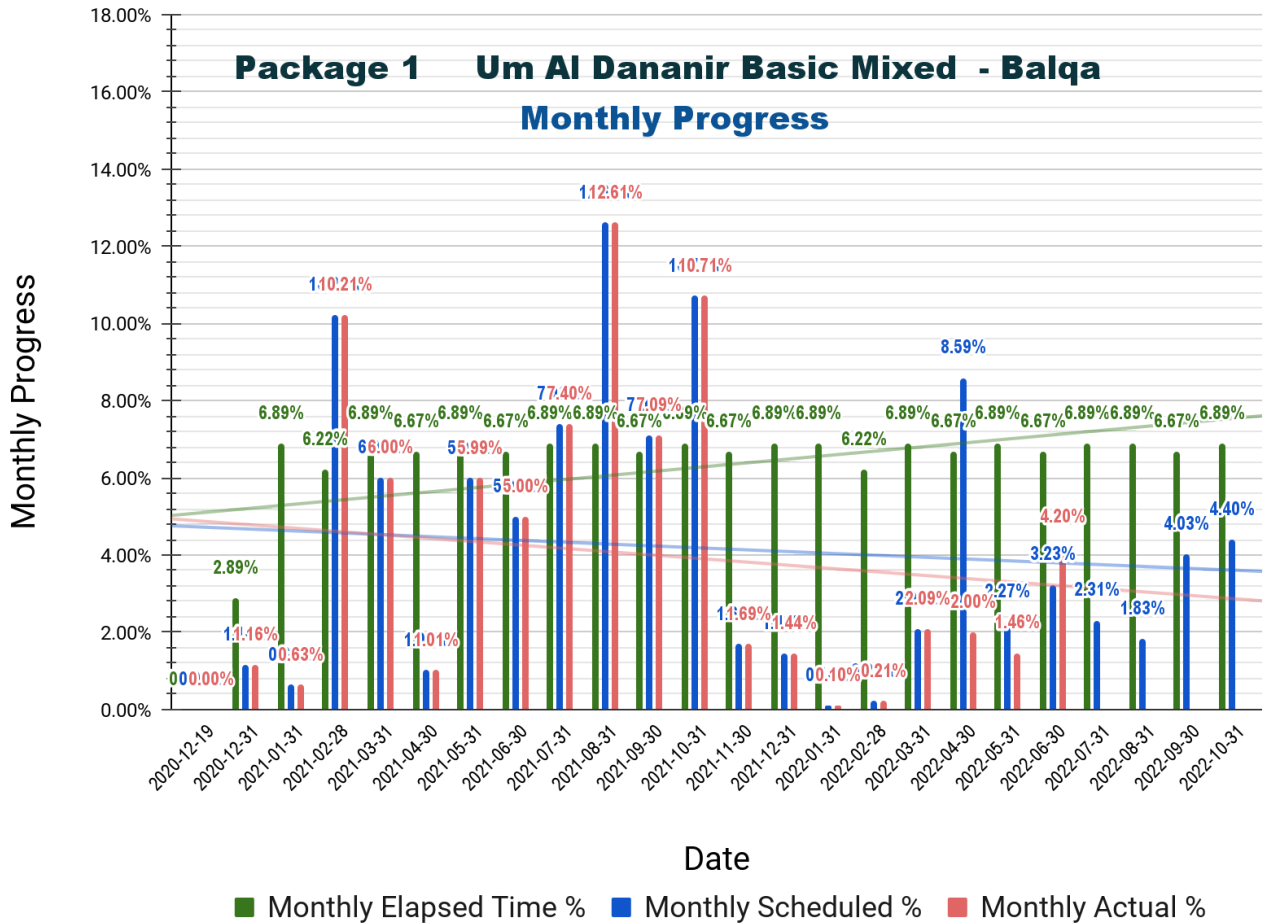
Date	Difference Between Scheduled and Actual
2022-04-30	-3.83%
2022-05-31	-7.29%
2022-06-30	-8.01%
2022-07-31	
2022-08-31	

PKG 1 Difference: Scheduled Vs. Actual Average For Three Sites



7.2 Um Al Dananir Basic Mixed School – Balqa

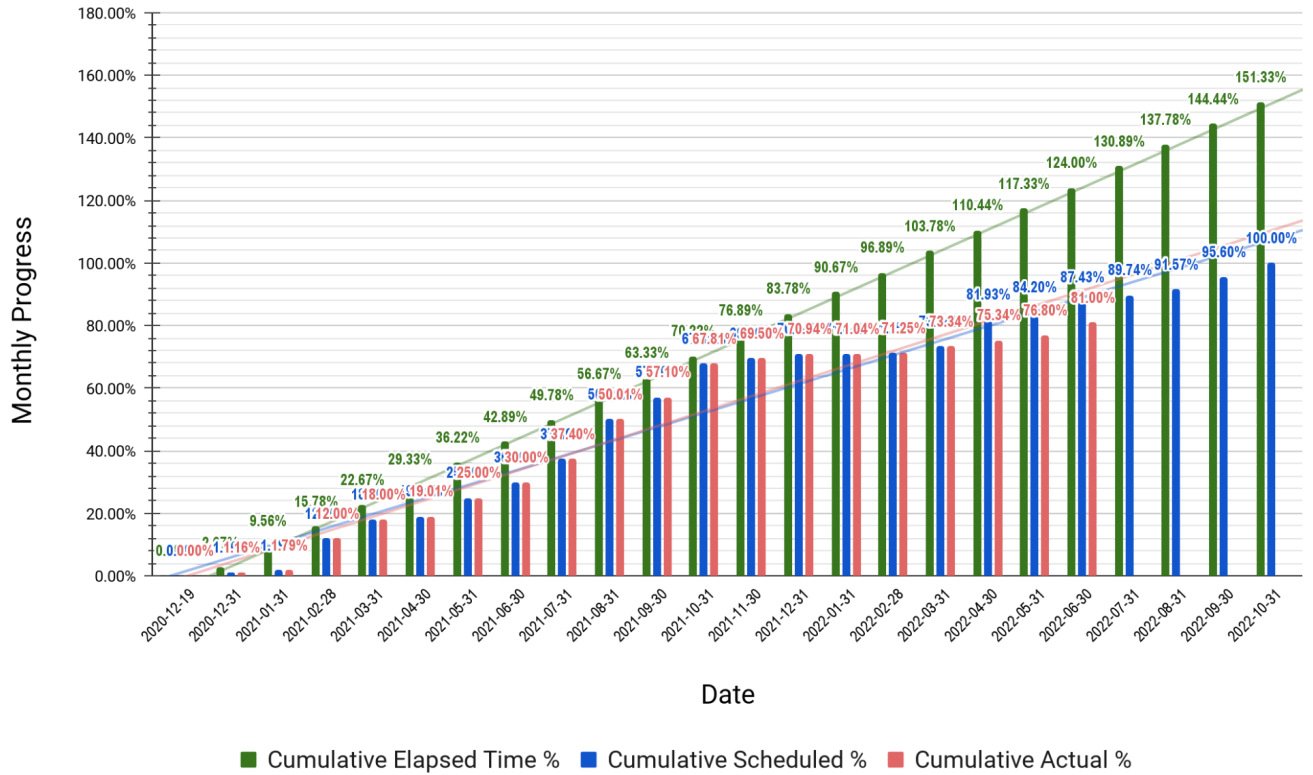
Package 1 Um Al Dananir Basic Mixed - Balqa			
Date	Monthly Elapsed Time %	Monthly Scheduled %	Monthly Actual %
2020-12-19	0.00%	0.00%	0.00%
2020-12-31	2.89%	1.16%	1.16%
2021-01-31	6.89%	0.63%	0.63%
2021-02-28	6.22%	10.21%	10.21%
2021-03-31	6.89%	6.00%	6.00%
2021-04-30	6.67%	1.01%	1.01%
2021-05-31	6.89%	5.99%	5.99%
2021-06-30	6.67%	5.00%	5.00%
2021-07-31	6.89%	7.40%	7.40%
2021-08-31	6.89%	12.61%	12.61%
2021-09-30	6.67%	7.09%	7.09%
2021-10-31	6.89%	10.71%	10.71%
2021-11-30	6.67%	1.69%	1.69%
2021-12-31	6.89%	1.44%	1.44%
2022-01-31	6.89%	0.10%	0.10%
2022-02-28	6.22%	0.21%	0.21%
2022-03-31	6.89%	2.09%	2.09%
2022-04-30	6.67%	8.59%	2.00%
2022-05-31	6.89%	2.27%	1.46%
2022-06-30	6.67%	3.23%	
2022-07-31	6.89%	2.31%	
2022-08-31	6.89%	1.83%	
2022-09-30	6.67%	4.03%	
2022-10-31	6.89%	4.40%	
Total	151.59%	100.00%	76.80%



Package 1 Um Al Dananir Basic Mixed – Balqa			
Date	Cumulative Elapsed Time %	Cumulative Scheduled %	Cumulative Actual %
2020-12-19	0.00%	0.00%	0.00%
2020-12-31	2.67%	1.16%	1.16%
2021-01-31	9.56%	1.79%	1.79%
2021-02-28	15.78%	12.00%	12.00%
2021-03-31	22.67%	18.00%	18.00%
2021-04-30	29.33%	19.01%	19.01%
2021-05-31	36.22%	25.00%	25.00%
2021-06-30	42.89%	30.00%	30.00%
2021-07-31	49.78%	37.40%	37.40%
2021-08-31	56.67%	50.01%	50.01%
2021-09-30	63.33%	57.10%	57.10%
2021-10-31	70.22%	67.81%	67.81%
2021-11-30	76.89%	69.50%	69.50%
2021-12-31	83.78%	70.94%	70.94%
2022-01-31	90.67%	71.04%	71.04%
2022-02-28	96.89%	71.25%	71.25%
2022-03-31	103.78%	73.34%	73.34%
2022-04-30	110.44%	81.93%	75.34%
2022-05-31	117.33%	84.20%	76.80%
2022-06-30	124.00%	87.43%	81.00%
2022-07-31	130.89%	89.74%	
2022-08-31	137.78%	91.57%	
2022-09-30	144.44%	95.60%	
2022-10-31	151.33%	100.00%	

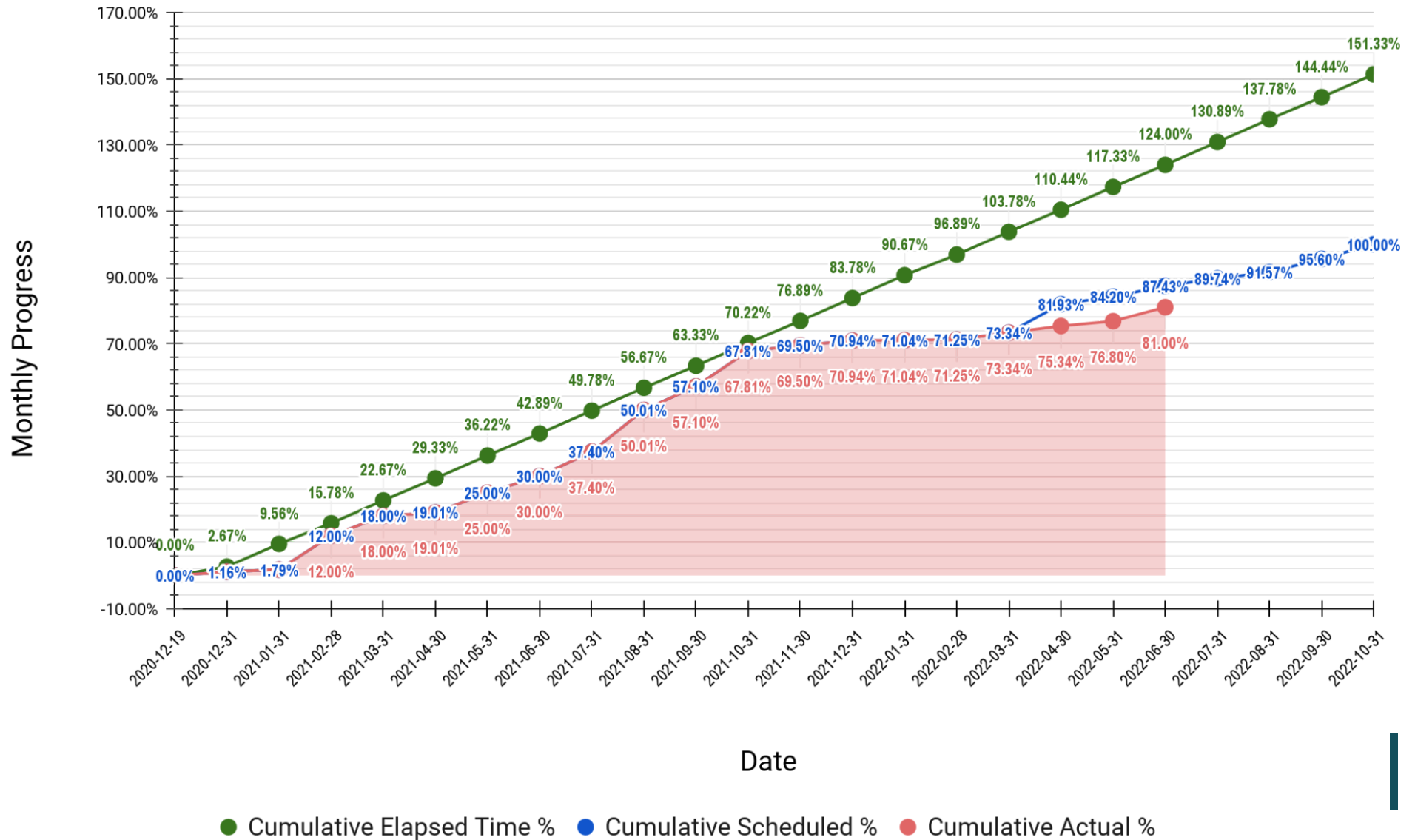
Package 1 Um Al Dananir Basic Mixed - Balqa

Cumulative Progress



Package 1 Um Al Dananir Basic Mixed - Balqa

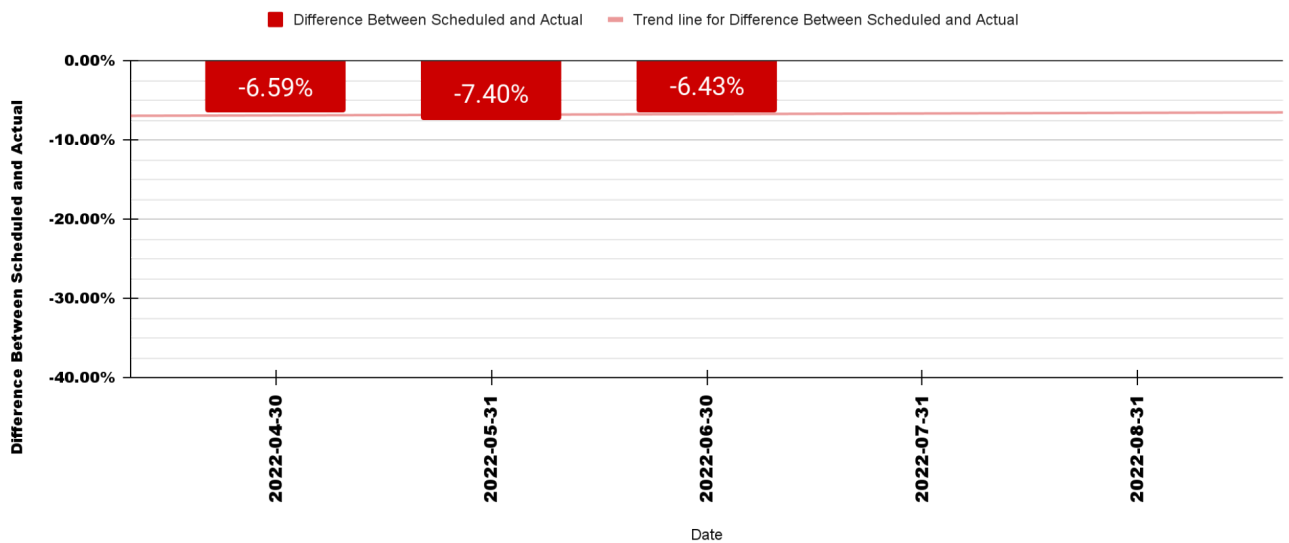
Cumulative Progress



Date	Difference Between Scheduled and Actual
2022-04-30	-6.59%
2022-05-31	-7.40%
2022-06-30	-6.43%
2022-07-31	
2022-08-31	

PKG 1 Difference: Scheduled Vs. Actual

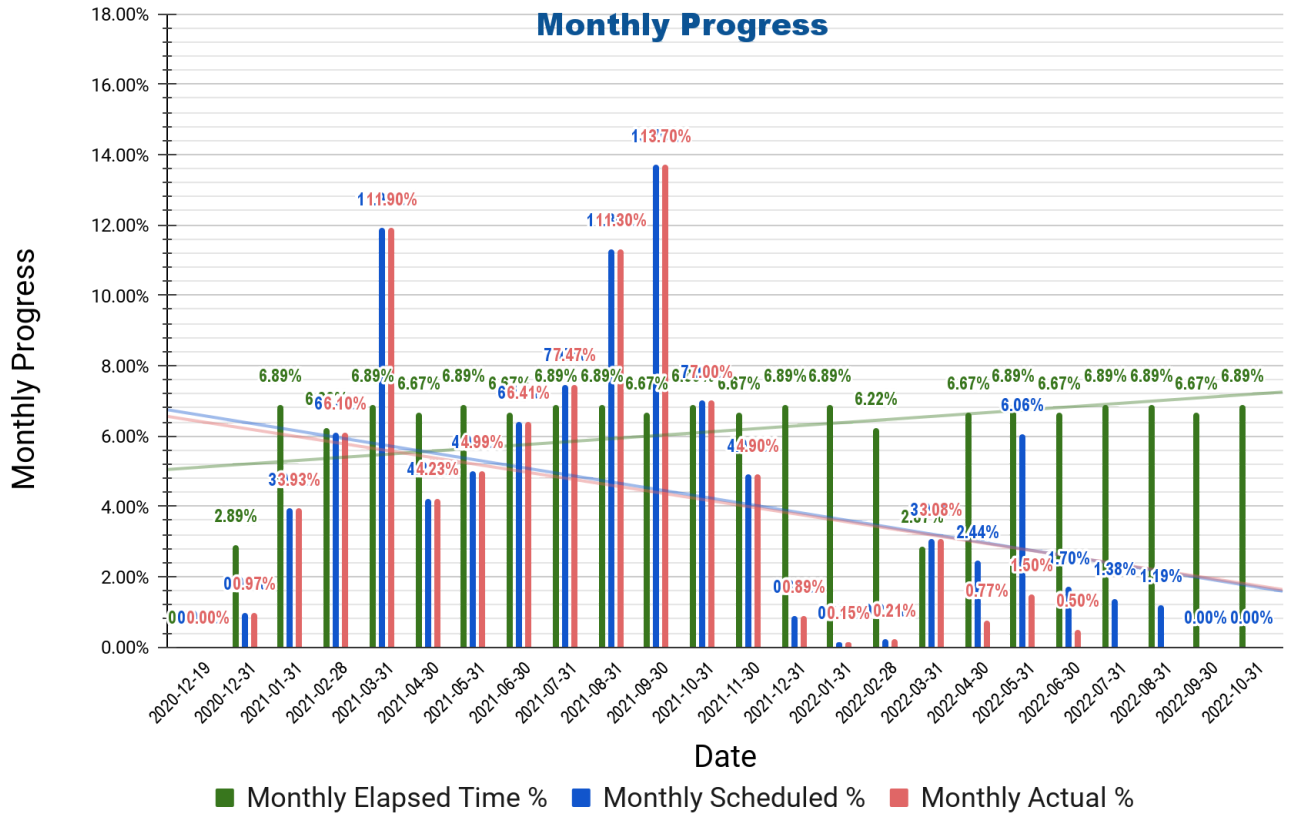
Um Al Dananir Basic Mixed - Balqa



7.3 Al Khansa'a Basic Mixed School – Balqa

Package 1 Al Khansa'a Basic Mixed - Balqa			
Date	Monthly Elapsed Time %	Monthly Scheduled %	Monthly Actual %
2020-12-19	0.00%	0.00%	0.00%
2020-12-31	2.89%	0.97%	0.97%
2021-01-31	6.89%	3.93%	3.93%
2021-02-28	6.22%	6.10%	6.10%
2021-03-31	6.89%	11.90%	11.90%
2021-04-30	6.67%	4.23%	4.23%
2021-05-31	6.89%	4.99%	4.99%
2021-06-30	6.67%	6.41%	6.41%
2021-07-31	6.89%	7.47%	7.47%
2021-08-31	6.89%	11.30%	11.30%
2021-09-30	6.67%	13.70%	13.70%
2021-10-31	6.89%	7.00%	7.00%
2021-11-30	6.67%	4.90%	4.90%
2021-12-31	6.89%	0.89%	0.89%
2022-01-31	6.89%	0.15%	0.15%
2022-02-28	6.22%	0.21%	0.21%
2022-03-31	2.87%	3.08%	3.08%
2022-04-30	6.67%	2.44%	0.77%
2022-05-31	6.89%	6.06%	1.50%
2022-06-30	6.67%	1.70%	0.50%
2022-07-31	6.89%	1.38%	
2022-08-31	6.89%	1.19%	
2022-09-30	6.67%	0.00%	
2022-10-31	6.89%	0.00%	
Total	147.57%	100.00%	90.00%

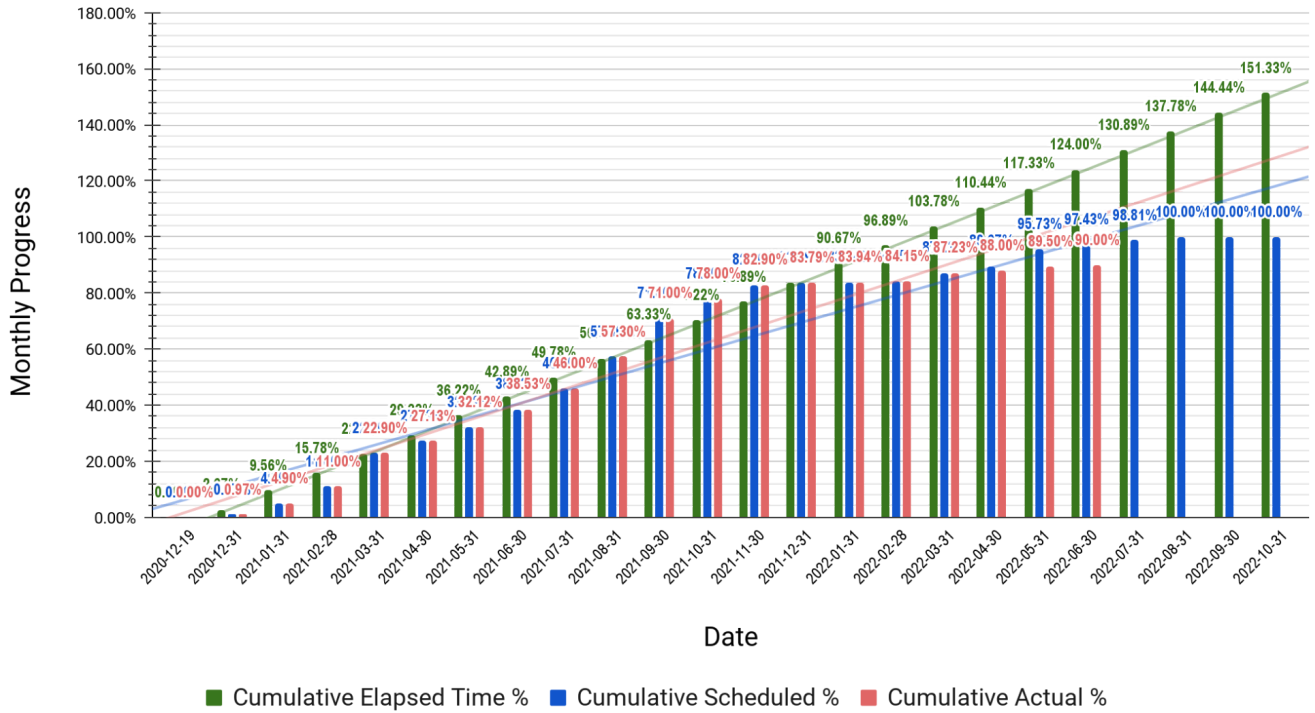
Package 1 Al Khansa'a Basic Mixed - Balqa



Package 1 Al Khansa'a Basic Mixed - Balqa			
Date	Cumulative Elapsed Time %	Cumulative Scheduled %	Cumulative Actual %
2020-12-19	0.00%	0.00%	0.00%
2020-12-31	2.67%	0.97%	0.97%
2021-01-31	9.56%	4.90%	4.90%
2021-02-28	15.78%	11.00%	11.00%
2021-03-31	22.67%	22.90%	22.90%
2021-04-30	29.33%	27.13%	27.13%
2021-05-31	36.22%	32.12%	32.12%
2021-06-30	42.89%	38.53%	38.53%
2021-07-31	49.78%	46.00%	46.00%
2021-08-31	56.67%	57.30%	57.30%
2021-09-30	63.33%	71.00%	71.00%
2021-10-31	70.22%	78.00%	78.00%
2021-11-30	76.89%	82.90%	82.90%
2021-12-31	83.78%	83.79%	83.79%
2022-01-31	90.67%	83.94%	83.94%
2022-02-28	96.89%	84.15%	84.15%
2022-03-31	103.78%	87.23%	87.23%
2022-04-30	110.44%	89.67%	88.00%
2022-05-31	117.33%	95.73%	89.50%
2022-06-30	124.00%	97.43%	90.00%
2022-07-31	130.89%	98.81%	
2022-08-31	137.78%	100.00%	
2022-09-30	144.44%	100.00%	
2022-10-31	151.33%	100.00%	

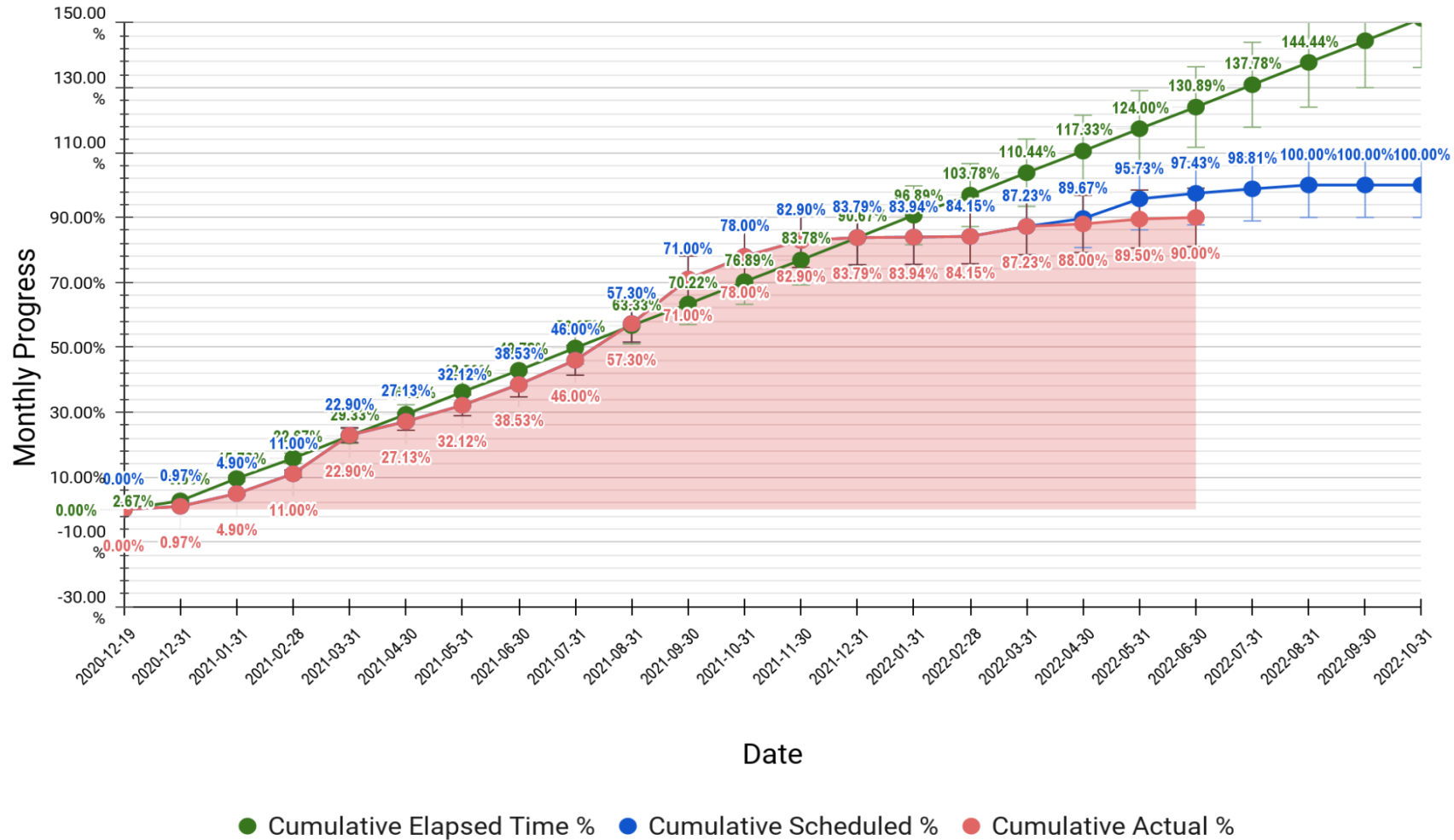
Package 1 Al Khansa'a Basic Mixed - Balqa

Cumulative Progress



Package 1 Al Khansa'a Basic Mixed - Balqa

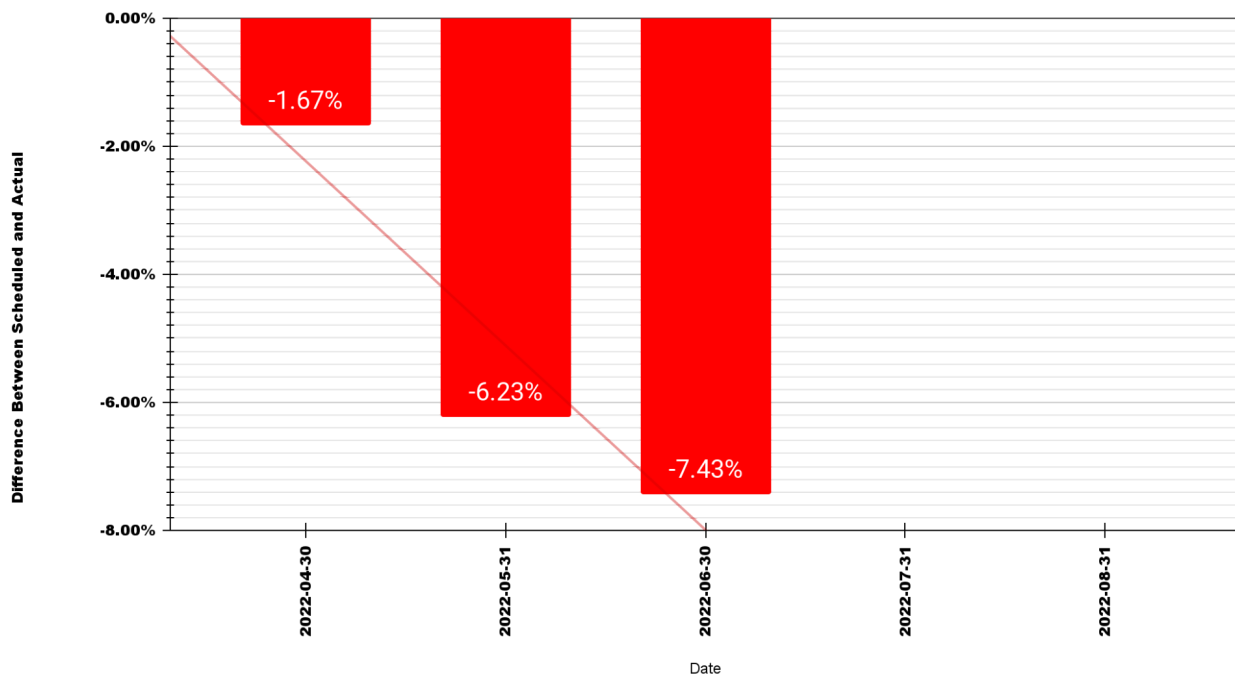
Cumulative Progress



Date	Difference Between Scheduled and Actual
2022-04-30	-1.67%
2022-05-31	-6.23%
2022-06-30	-7.43%
2022-07-31	
2022-08-31	

PKG 1 Difference: Scheduled Vs. Actual

Al Khansa'a Basic Mixed - Balqa

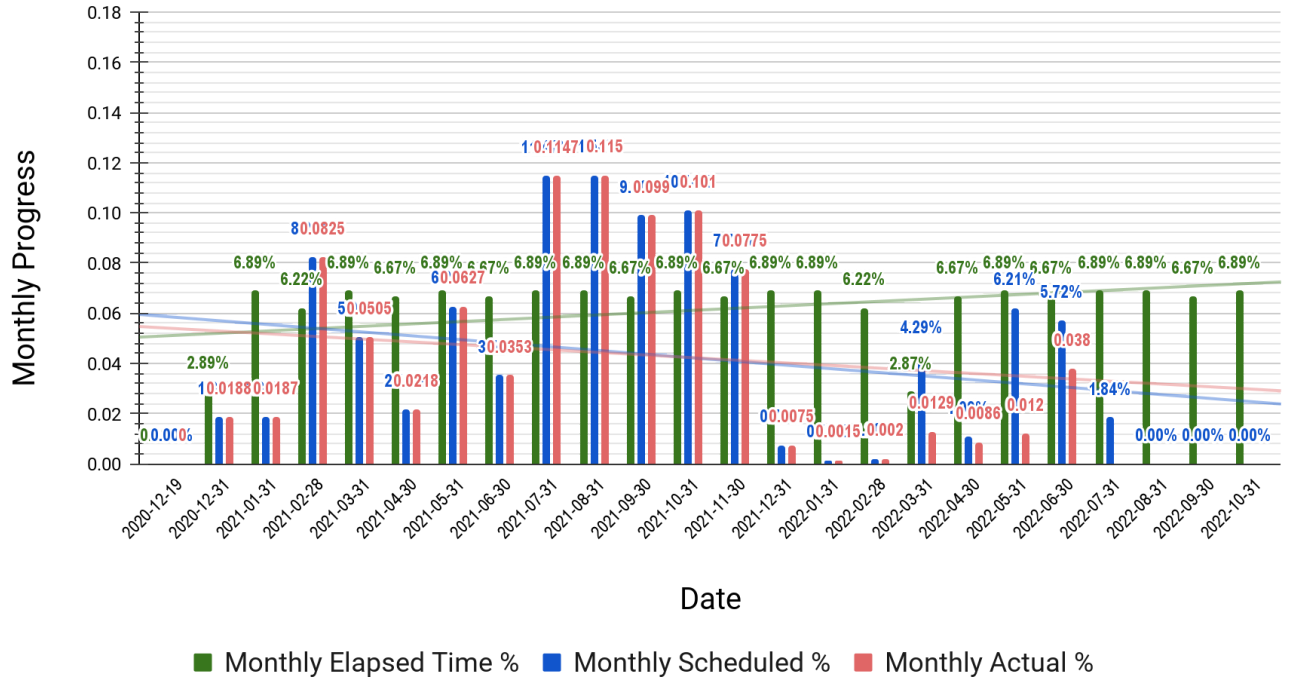


7.4 Khadija Bint Khwailed Basic Mixed School– Balqa

Package 1 Khadija Bint Khwailed Basic Mixed – Balqa			
Date	Monthly Elapsed Time %	Monthly Scheduled %	Monthly Actual %
2020-12-19	0.00%	0.00%	0
2020-12-31	2.89%	1.88%	1.88%
2021-01-31	6.89%	1.87%	1.87%
2021-02-28	6.22%	8.25%	8.25%
2021-03-31	6.89%	5.05%	5.05%
2021-04-30	6.67%	2.18%	2.18%
2021-05-31	6.89%	6.27%	6.27%
2021-06-30	6.67%	3.53%	3.53%
2021-07-31	6.89%	11.47%	11.47%
2021-08-31	6.89%	11.50%	11.50%
2021-09-30	6.67%	9.90%	9.90%
2021-10-31	6.89%	10.10%	10.10%
2021-11-30	6.67%	7.75%	7.75%
2021-12-31	6.89%	0.75%	0.75%
2022-01-31	6.89%	0.15%	0.15%
2022-02-28	6.22%	0.20%	0.20%
2022-03-31	2.87%	4.29%	1.29%
2022-04-30	6.67%	1.09%	0.86%
2022-05-31	6.89%	6.21%	1.20%
2022-06-30	6.67%	5.72%	3.80%
2022-07-31	6.89%	1.84%	
2022-08-31	6.89%	0.00%	
2022-09-30	6.67%	0.00%	
2022-10-31	6.89%	0.00%	
Total	147.57%	100.00%	88.00%

Package 1 Khadija Bint Khwailed Basic Mixed - Balqa

Monthly Progress

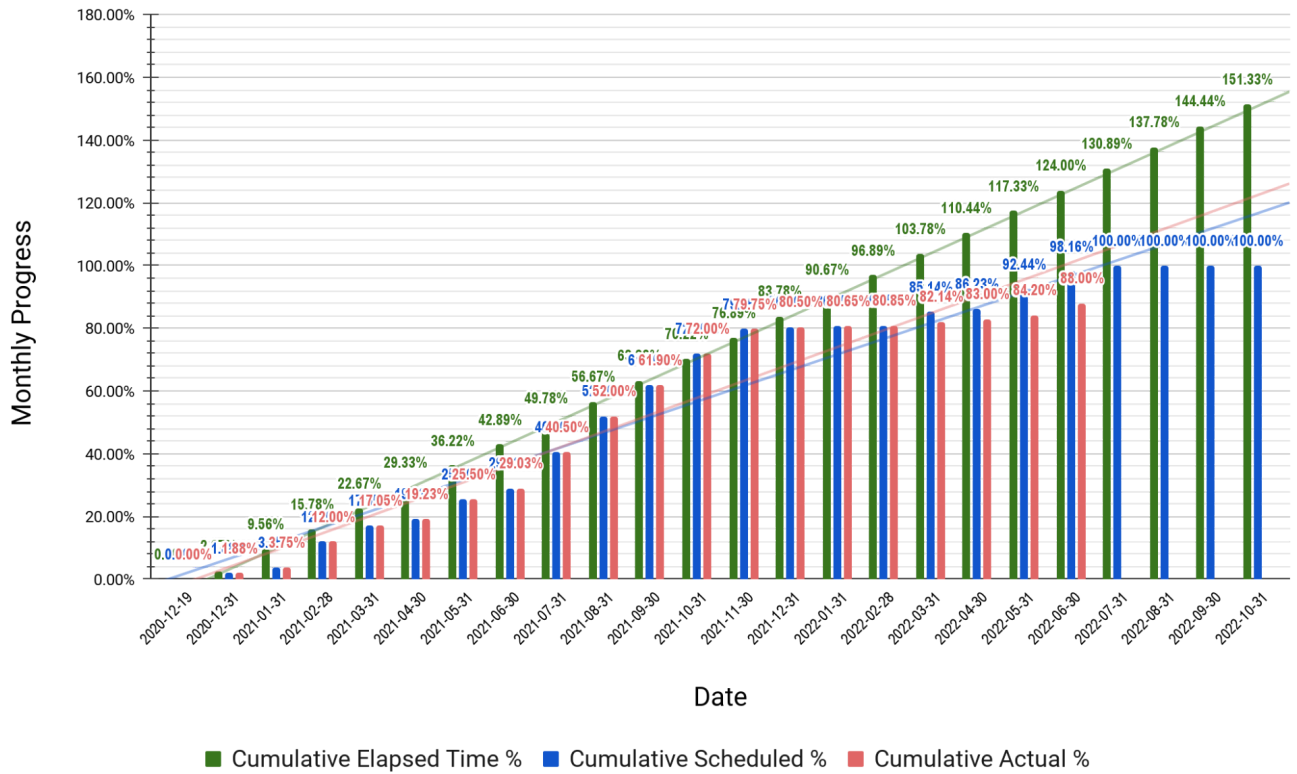


Package 1 Khadija Bint Khwailed Basic Mixed – Balqa

Date	Cumulative Elapsed Time %	Cumulative Scheduled %	Cumulative Actual %
2020-12-19	0.00%	0.00%	0.00%
2020-12-31	2.67%	1.88%	1.88%
2021-01-31	9.56%	3.75%	3.75%
2021-02-28	15.78%	12.00%	12.00%
2021-03-31	22.67%	17.05%	17.05%
2021-04-30	29.33%	19.23%	19.23%
2021-05-31	36.22%	25.50%	25.50%
2021-06-30	42.89%	29.03%	29.03%
2021-07-31	49.78%	40.50%	40.50%
2021-08-31	56.67%	52.00%	52.00%
2021-09-30	63.33%	61.90%	61.90%
2021-10-31	70.22%	72.00%	72.00%
2021-11-30	76.89%	79.75%	79.75%
2021-12-31	83.78%	80.50%	80.50%
2022-01-31	90.67%	80.65%	80.65%
2022-02-28	96.89%	80.85%	80.85%
2022-03-31	103.78%	85.14%	82.14%
2022-04-30	110.44%	86.23%	83.00%
2022-05-31	117.33%	92.44%	84.20%
2022-06-30	124.00%	98.16%	88.00%
2022-07-31	130.89%	100.00%	
2022-08-31	137.78%	100.00%	
2022-09-30	144.44%	100.00%	
2022-10-31	151.33%	100.00%	

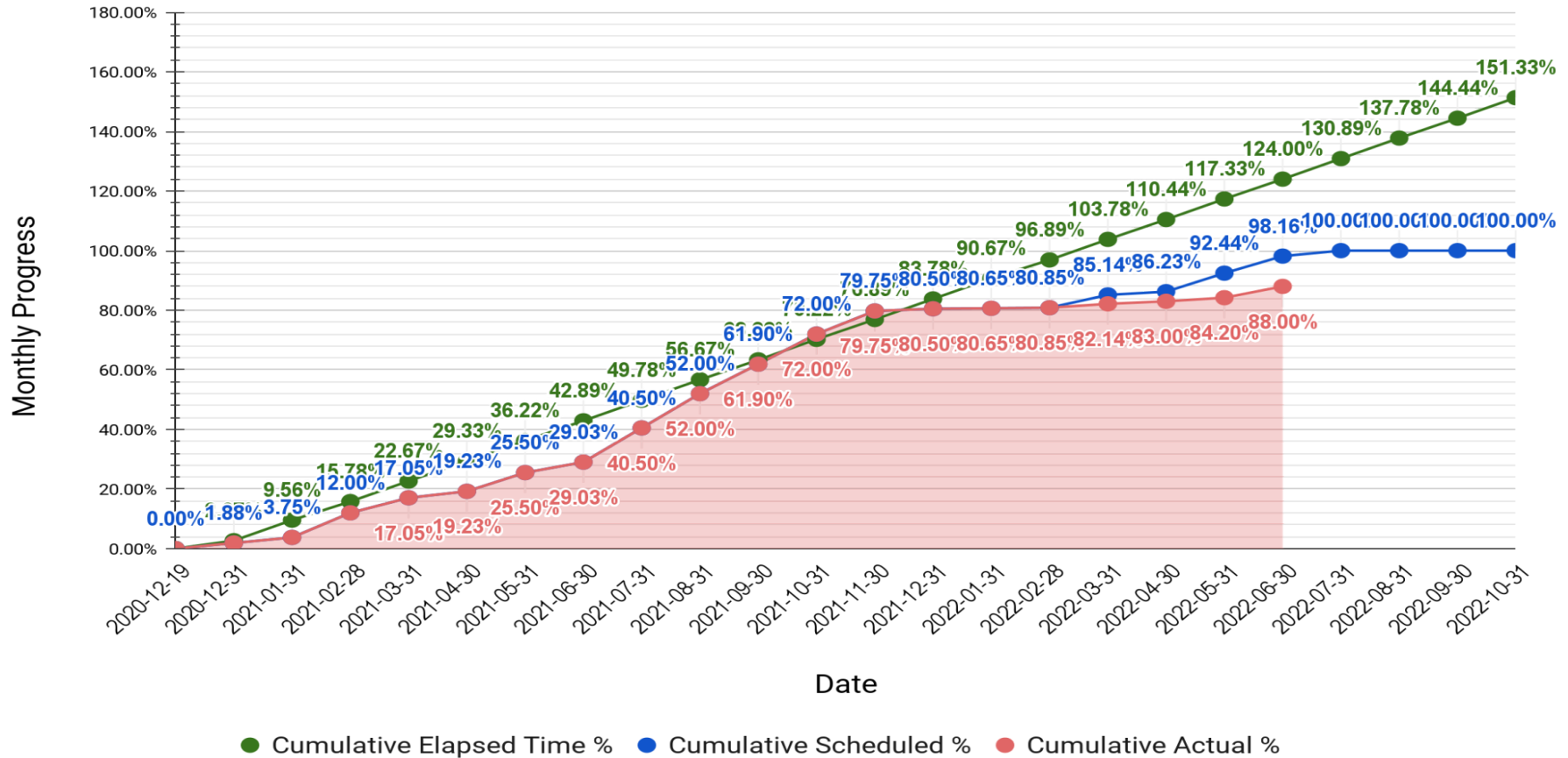
Package 1 Khadija Bint Khwailed Basic Mixed - Balqa

Cumulative Progress



Package 1 Khadija Bint Khwailed Basic Mixed - Balqa

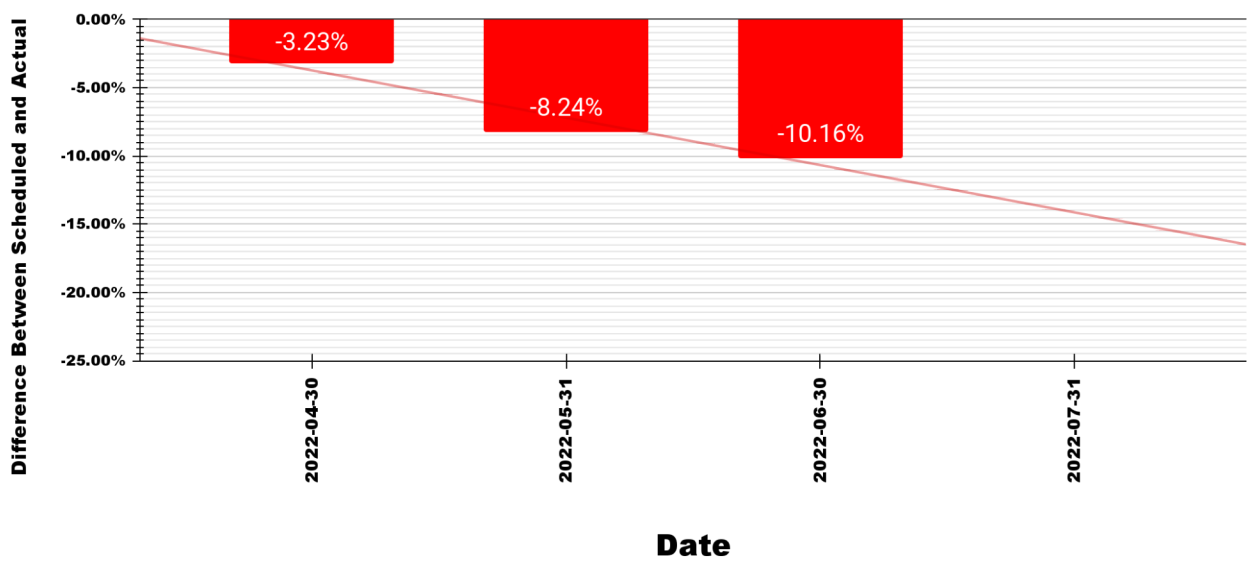
Cumulative Progress



Date	Difference Between Scheduled and Actual
2022-04-30	-3.23%
2022-05-31	-8.24%
2022-06-30	-10.16%
2022-07-31	

PKG 1 Difference: Scheduled Vs. Actual

Khadija Bint Khwailed Basic Mixed - Balqa



7.5 Engineer comments on work progress

A. Average for the three schools:

The cumulative progress -as average- for the three schools at the end of this month:

Date	Cumulative Elapsed Time %	Cumulative Scheduled %	Cumulative Actual %
2022-06-30	124.00%	94.34%	86.33%

The difference Between Scheduled and Actual is **-8.01%**

B. Um Al Dananir Basic Mixed - Balqa :

The cumulative progress -as average- for this site at the end of this month:

Date	Cumulative Elapsed Time %	Cumulative Scheduled %	Cumulative Actual %
2022-06-30	124.00%	87.43%	81.00%

The difference Between Scheduled and Actual is **-6.43%**

C. Al Khansa'a Basic Mixed - Balqa:

The cumulative progress -as average- for this site at the end of this month:

Date	Cumulative Elapsed Time %	Cumulative Scheduled %	Cumulative Actual %
2022-06-30	124.00%	97.43%	90.00%

The difference Between Scheduled and Actual is **-7.43%**

D. Khadija Bint Khwailed Basic Mixed - Balqa:

The cumulative progress -as average- for this site at the end of this month:

Date	Cumulative Elapsed Time %	Cumulative Scheduled %	Cumulative Actual %
2022-06-30	124.00%	98.16%	88.00%

The difference Between Scheduled and Actual is **-10.16%**

In accordance with the above, the contractor will be drawn to override the delay at the end of this month, to approach the cumulative progress scheduled at the end of next month.

7.6 Tracking Tasks in CPM

A- Um Al Dananir Basic Mixed - Balqa :

- https://docs.google.com/spreadsheets/d/e/2PACX-1vT5PktzjJat0Mh0mOnqWmoF-l-4FhUa09rGQpd4HZF_EZu8o0KTJdiPwqtMbrw3dmYiCgkX5czzxdl6/pubhtml?gid=1247655849&single=true
- https://docs.google.com/spreadsheets/d/e/2PACX-1vT5PktzjJat0Mh0mOnqWmoF-l-4FhUa09rGQpd4HZF_EZu8o0KTJdiPwqtMbrw3dmYiCgkX5czzxdl6/pubhtml?gid=726041877&single=true

B- Al Khansa'a Basic Mixed - Balqa:

- https://docs.google.com/spreadsheets/d/e/2PACX-1vT5PktzjJat0Mh0mOnqWmoF-l-4FhUa09rGQpd4HZF_EZu8o0KTJdiPwqtMbrw3dmYiCgkX5czzxdl6/pubhtml?gid=303270552&single=true
- https://docs.google.com/spreadsheets/d/e/2PACX-1vT5PktzjJat0Mh0mOnqWmoF-l-4FhUa09rGQpd4HZF_EZu8o0KTJdiPwqtMbrw3dmYiCgkX5czzxdl6/pubhtml?gid=611852448&single=true

C- Khadija Bint Khwailed Basic Mixed - Balqa:

- https://docs.google.com/spreadsheets/d/e/2PACX-1vT5PktzjJat0Mh0mOnqWmoF-l-4FhUa09rGQpd4HZF_EZu8o0KTJdiPwqtMbrw3dmYiCgkX5czzxdl6/pubhtml?gid=1300143736&single=true
- https://docs.google.com/spreadsheets/d/e/2PACX-1vT5PktzjJat0Mh0mOnqWmoF-l-4FhUa09rGQpd4HZF_EZu8o0KTJdiPwqtMbrw3dmYiCgkX5czzxdl6/pubhtml?gid=868308398&single=true

8 | Submitted Materials

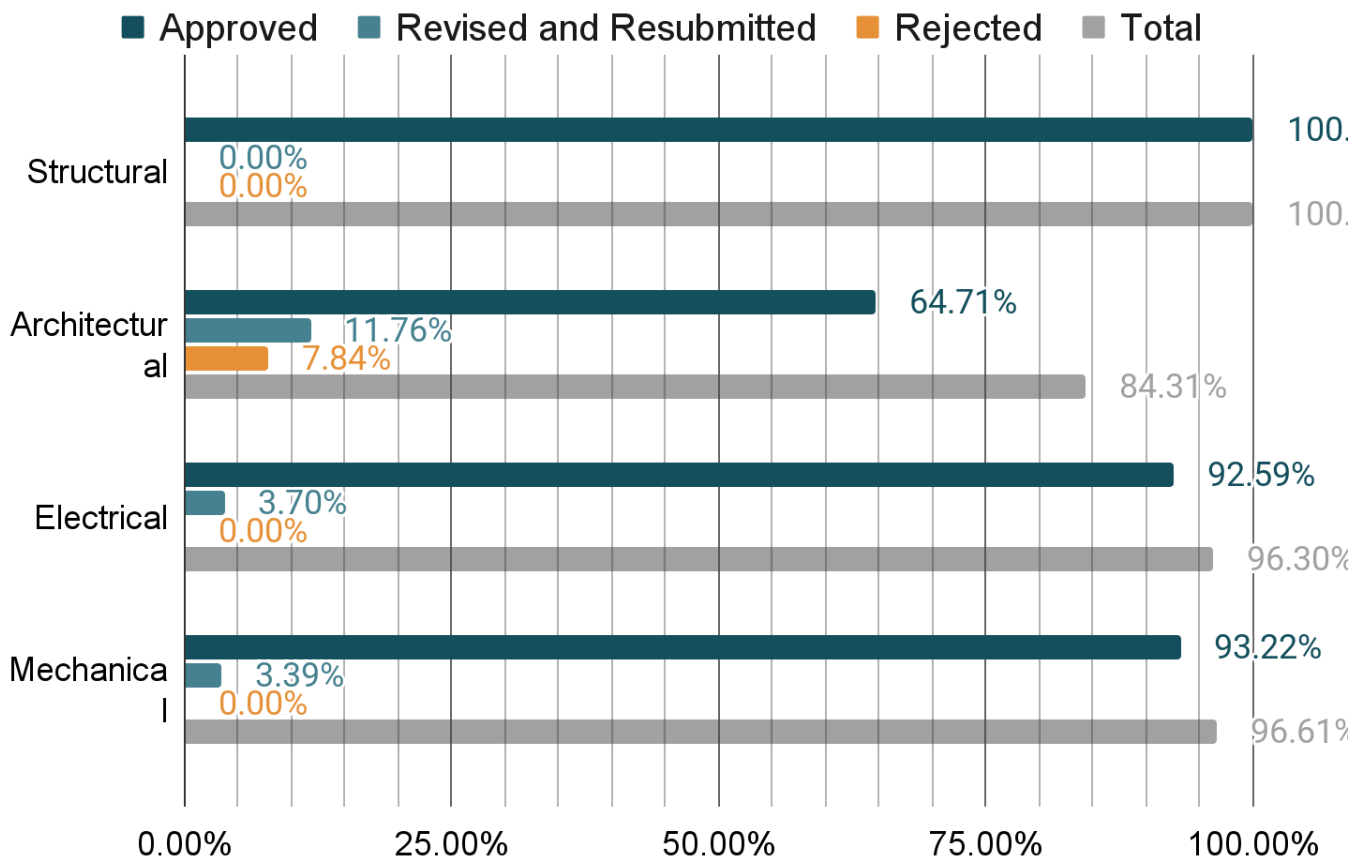
8.1 Summary of Submitted Materials

PKG 1 Summary of Submitted Materials			2022-03-31	
Summary of Submitted Materials	Total No. of Materials to be Submitted	Total No. of Submitted Materials	Submitted Materials (%)	Non Submitted Materials (%)
Structural	20	20	100.00%	0.00%
Architectural	51	43	84.31%	15.69%
Electrical	27	26	96.30%	3.70%
Mechanical	59	57	96.61%	3.39%

PKG 1 Summary of Submitted Materials (No.)				
Item	Approved	Revised and Resubmitted	Rejected	Total
Structural	20	0	0	20
Architectural	33	6	4	43
Electrical	25	1	0	26
Mechanical	55	2	0	57

PKG 1 Summary of Submitted Materials (%)				
Item	Approved	Revised and Resubmitted	Rejected	Total
Structural	100.00%	0.00%	0.00%	100.00%
Architectural	64.71%	11.76%	7.84%	84.31%
Electrical	92.59%	3.70%	0.00%	96.30%
Mechanical	93.22%	3.39%	0.00%	96.61%

PKG 1 Summary of Submitted Materials



8.2 Shop Drawings & Submittal Tracking LOG

- https://docs.google.com/spreadsheets/d/e/2PA-CX-1vS56N2rgzLzoemsYNsp24--KwnmE6u34GHonTR3ls-S_UkBD OGpp4GM6JW4_8tvRalBcCtbvj7rbSe8/pubhtml

8.3 Materials Submittal Vendor List

- https://docs.google.com/spreadsheets/d/e/2PA-CX-1vSRt_azAPFGgmu-NTsChIO_idwBQgOmRIFViDO9aVRh33y8FKIU8VHaDxTwVqphAGNq-ryaCABjoqNH/pubhtml

9 | Correspondence Tracking Logs

- https://docs.google.com/spreadsheets/d/e/2PA CX-1vTOn6trNN2ow3Vhy-_xQ4kxy9seVfpc7sc9c8iQLEmG9fuV7dU__r1Nd5b2oUdI99kcTCH8r9ZdD8zY/pubhtml

10 | Non-conformance Report Tracking Log

10.1 HSE

- https://docs.google.com/spreadsheets/d/e/2PA CX-1vQOVbQGV LJGSidxON-YZkmCuW2hnBp874pmehPezM7mu-DAfVITSELCe_oJYZuOrUSRWerFwqSR6YwJ/pubhtml?gid=0&single=true

10.2 QCs

Um-Al Dananir Basic Mixed School-Balqa

- https://b9686515-2954-4919-832c-2c36b1d1850f.filesusr.com/ugd/c80178_95e502375b0049988cfc31a89a65f725.pdf
- https://b9686515-2954-4919-832c-2c36b1d1850f.filesusr.com/ugd/c80178_eb63ac7cc3904b9abd3c177770be25ee.pdf
- https://b9686515-2954-4919-832c-2c36b1d1850f.filesusr.com/ugd/c80178_a5bed82f2f65425e92d6cac982097584.pdf
- https://b9686515-2954-4919-832c-2c36b1d1850f.filesusr.com/ugd/bed180_dc9271608d274e468da310d5c82df3c3.pdf
- https://b9686515-2954-4919-832c-2c36b1d1850f.filesusr.com/ugd/bed180_79a022b4b8d648998eb1e90d68417a61.pdf

- ❑ https://b9686515-2954-4919-832c-2c36b1d1850f.filesusr.com/ugd/bed180_4488d9e64b524451a802b3c94ed30776.pdf
- ❑ https://b9686515-2954-4919-832c-2c36b1d1850f.filesusr.com/ugd/bed180_843c08844e4843e1a17fab223b3bb5f2.pdf
- ❑ https://b9686515-2954-4919-832c-2c36b1d1850f.filesusr.com/ugd/bed180_4218411f42d84dc9897557b5221ec7d0.pdf
- ❑ https://b9686515-2954-4919-832c-2c36b1d1850f.filesusr.com/ugd/bed180_16c046b55d144f7899b31b36694a6a77.pdf
- ❑ https://b9686515-2954-4919-832c-2c36b1d1850f.filesusr.com/ugd/bed180_1069edd1e6844bb28532a283e4e05907.pdf
- ❑ https://b9686515-2954-4919-832c-2c36b1d1850f.filesusr.com/ugd/bed180_2f89add848d84b6ca962258c1c014afd.pdf
- ❑ https://b9686515-2954-4919-832c-2c36b1d1850f.filesusr.com/ugd/bed180_8659da8e566f4a6bb12c4e4946bfdeaf.pdf
- ❑ https://b9686515-2954-4919-832c-2c36b1d1850f.filesusr.com/ugd/bed180_48a0121f5515422c94c54b41091e9f8e.pdf
- ❑ https://b9686515-2954-4919-832c-2c36b1d1850f.filesusr.com/ugd/bed180_8872945968f54752a3e8d8e6a5c668d9.pdf
- ❑ https://www.medanat.site/_files/ugd/c80178_9a8e87c001da48579cf02ac1f51a4ac5.pdf
- ❑ https://www.medanat.site/_files/ugd/c80178_735d1dc13f8a46ceb21602e2c1c40c1c.pdf
- ❑ https://www.medanat.site/_files/ugd/c80178_aff2a16a66794a35997c5108798d34b9.pdf
- ❑ https://www.medanat.site/_files/ugd/c80178_f2d38b9ce63943b5bd1e2cb05a662b6b.pdf

- https://www.medanat.site/_files/ugd/c80178_49a09a47b9d24e10afccea5befbaf23f.pdf
- https://www.medanat.site/_files/ugd/c80178_0099c92e4d5a483a9a14844a71cddb8e.pdf
- https://www.medanat.site/_files/ugd/c80178_9c2132e97cd147189bb8d709f2829dc8.pdf

Al Khansa' Basic Mixed School- Balqa

- https://b9686515-2954-4919-832c-2c36b1d1850f.filesusr.com/ugd/c80178_3df1cb9167a44ead828afb50d1e03462.pdf
- https://b9686515-2954-4919-832c-2c36b1d1850f.filesusr.com/ugd/c80178_55d0ccfa1fb5431f983b66e1c868a836.pdf
- https://b9686515-2954-4919-832c-2c36b1d1850f.filesusr.com/ugd/bed180_6a2a055bf5e547fbbdf2f5f7d1abf90.pdf
- https://b9686515-2954-4919-832c-2c36b1d1850f.filesusr.com/ugd/bed180_fbaf1393c9a84eca80d5201cd99ca750.pdf
- https://b9686515-2954-4919-832c-2c36b1d1850f.filesusr.com/ugd/bed180_8639195014414d7e9a0e2cfc569a5c89.pdf
- https://b9686515-2954-4919-832c-2c36b1d1850f.filesusr.com/ugd/bed180_725bc2d4b16641f8b7541cb87564cc73.pdf
- https://b9686515-2954-4919-832c-2c36b1d1850f.filesusr.com/ugd/bed180_3d550dfaceb542e9a4e375fbe3596f5d.pdf
- https://b9686515-2954-4919-832c-2c36b1d1850f.filesusr.com/ugd/bed180_9e07c4cbcc4f4d7288a9dd48afb2bc70.pdf
- https://b9686515-2954-4919-832c-2c36b1d1850f.filesusr.com/ugd/bed180_e466af6f544f4a899f79e563e95b7c52.pdf

- ❑ https://b9686515-2954-4919-832c-2c36b1d1850f.filesusr.com/ugd/bed180_bfb04742e21440498ef1bb8c21a3ed30.pdf
- ❑ https://www.medanat.site/_files/ugd/c80178_c485d11ead8e425ab195e0518415bb4f.pdf
- ❑ https://www.medanat.site/_files/ugd/c80178_a92859f587c744b68077bc45dabdd519.pdf
- ❑ https://www.medanat.site/_files/ugd/c80178_f552365f9cc44d0a92de9dc7c31c0997.pdf
- ❑ https://www.medanat.site/_files/ugd/c80178_4883186124df4fd69d8eaa888b55d8d4.pdf
- ❑ https://www.medanat.site/_files/ugd/c80178_9df0cab66e74730b027f089c9d07bea.pdf
- ❑ https://www.medanat.site/_files/ugd/c80178_240ac23851404242ba40cd40b1c586a9.pdf
- ❑ https://www.medanat.site/_files/ugd/c80178_4758583ff3ab42668ff0d238e1a58f64.pdf

Khadija Bint Khwailed Basic Mixed School- Al Shouna Al Janoubia

- ❑ https://b9686515-2954-4919-832c-2c36b1d1850f.filesusr.com/ugd/c80178_d1ad165f5a7e4200b9795f06ff305021.pdf
- ❑ https://b9686515-2954-4919-832c-2c36b1d1850f.filesusr.com/ugd/c80178_29d09e4a42a84e64af0cc5c39cd84ec1.pdf
- ❑ https://b9686515-2954-4919-832c-2c36b1d1850f.filesusr.com/ugd/c80178_74a56ac0b7f646e48fce9594565434b4.pdf
- ❑ https://b9686515-2954-4919-832c-2c36b1d1850f.filesusr.com/ugd/c80178_7e5d9234db994914b5191928b2091cdc.pdf
- ❑ https://b9686515-2954-4919-832c-2c36b1d1850f.filesusr.com/ugd/bed180_d4bbbc0d96634780a1ffe22a300a2912.pdf

- ❑ https://b9686515-2954-4919-832c-2c36b1d1850f.filesusr.com/ugd/bed180_3b8345e57b01415f87a5aa6683169f19.pdf
- ❑ https://b9686515-2954-4919-832c-2c36b1d1850f.filesusr.com/ugd/bed180_0e049bc7a8964766a20da3e296250fdc.pdf
- ❑ https://b9686515-2954-4919-832c-2c36b1d1850f.filesusr.com/ugd/bed180_dac873b3c2f74be8966b6f7507af0ed5.pdf
- ❑ https://b9686515-2954-4919-832c-2c36b1d1850f.filesusr.com/ugd/bed180_9de3974b84e943549bed792adf4885e7.pdf
- ❑ https://b9686515-2954-4919-832c-2c36b1d1850f.filesusr.com/ugd/bed180_3c00f33a76944118a16635e9d0e5f8a6.pdf
- ❑ https://b9686515-2954-4919-832c-2c36b1d1850f.filesusr.com/ugd/bed180_a22e5461a7d245208749498b136c8b03.pdf
- ❑ https://b9686515-2954-4919-832c-2c36b1d1850f.filesusr.com/ugd/bed180_8fa91c4249724f65b63955fef0e2f408.pdf
- ❑ https://www.medanat.site/_files/ugd/c80178_85e796801ac047eeb575c0a7782161be.pdf
- ❑ https://www.medanat.site/_files/ugd/c80178_156c008afd804218a0d63535f73ece3d.pdf
- ❑ https://www.medanat.site/_files/ugd/c80178_211c3ea1c8ae4a5a91f0ae1078decc40.pdf
- ❑ https://www.medanat.site/_files/ugd/c80178_5fe2cf488bb9474b9e62b081bc033503.pdf
- ❑ https://www.medanat.site/_files/ugd/c80178_d7699f6799354eae8c7f5766fe3e38b1.pdf
- ❑ https://www.medanat.site/_files/ugd/c80178_240ac23851404242ba40cd40b1c586a9.pdf
- ❑ https://www.medanat.site/_files/ugd/c80178_0e0d97a78a7d449e9b34374e99f47e02.pdf

10.3 NCRs

- ❑ <https://docs.google.com/spreadsheets/d/e/2PA-CX-1vSnOu-cjpMgCuNli-kgJGVM0U9qKnc3ahiGgSdQj9c01v9UmbwwjKul-WbxeeY1ScCmcVnJJyN58Ggo/pubhtml?gid=0&single=true>
- ❑ <https://docs.google.com/spreadsheets/d/e/2PA-CX-1vSnOu-cjpMgCuNli-kgJGVM0U9qKnc3ahiGgSdQj9c01v9UmbwwjKul-WbxeeY1ScCmcVnJJyN58Ggo/pubhtml?gid=485613624&single=true>
- ❑ <https://docs.google.com/spreadsheets/d/e/2PA-CX-1vSnOu-cjpMgCuNli-kgJGVM0U9qKnc3ahiGgSdQj9c01v9UmbwwjKul-WbxeeY1ScCmcVnJJyN58Ggo/pubhtml?gid=381015841&single=true>

11 | Request For Information Tracking Logs

11.1 RFIs-Designer

- ❑ https://docs.google.com/spreadsheets/d/e/2PA-CX-1vSc3IBnxasAY1GzrStR4_bSdk_vbRSwWI2S3HEZ7fDWukp2jovu_qrWGhAzQIS5S45gZ08p4j2K7r6B/pubhtml?gid=0&single=true

11.2 RFIs-Contractor

- ❑ https://docs.google.com/spreadsheets/d/e/2PA-CX-1vR_TqVefGWMHbWelneg0GJWd5j313mB8G5zjmU1FW2Z0Tf6DqJK8kfcG-yFm0WIYhz4Mfz8sqHQym-/pubhtml?gid=0&single=true

12 | Site problems and Solutions

All are Solved

13 | Meetings and Site Visits

13.1 Coordination & Progress Meetings

Coordination & Progress Meetings				
No.	Date	Location	Parties	Agenda
1	To be announced	To be announced	<ul style="list-style-type: none"> ● MPWH ● USAID ● Trigon ● Wahib Medanat ● Dijlah Est. Const. Contr. 	<p>July Monthly Progress Meeting:</p> <ul style="list-style-type: none"> ● Health, Safety and Environment. ● Site borders, boundary walls/ Obstacles. ● Progress review in general. ● Construction Schedule and Update- using the construction schedule, review and projection/ the Contractor. ● Quality Control. ● Status of submittals.

13.2 Site Visits

Site Visits				
No.	Date	Location	Parties	Agenda
1				

13.3 Regular Monthly Site Visits (Home Office Support)

Regular Monthly Sites Visits (Home Office Support)				
1	16/07/2022	Um Al Dananir Basic Mixed School- Al Balqa	<ul style="list-style-type: none"> • Engineer Rep. 	<ul style="list-style-type: none"> • The supervision team discussed with the Contractor the connection point between the porcelain cladding at the corridors and the granite cladding at the entrance for the purpose of separation between the entrance and the kindergarten area. The team instructed the Contractor to limit the granite cladding to the staircase wall, and the cladding for the opening jamb shall be of porcelain using special beads to separate the granite from the porcelain. The Contractor executed the works according to the instructions. • The team observed that the Contractor has replaced the unacceptable small granite pieces at the parapet of the staircase with one whole piece as instructed. • The team inspected the executed curtain wall at the staircase façade and observed variations regarding the fixation points, relation with the built stones at the window jambs and the window sills as well. The team requested the Contractor to check and dismantle the sections at the whole façade which are fixed incorrectly and rectify other works if needed in coordination with the supervision team. The relation between stone at the jambs, window sills, internal plastering and aluminium curtain walls should be corrected. The Contractor has made the necessary rectifications. • The team observed that the Contractor has removed the red grout used at the granite coping and replaced it with the approved grout. • The team inspected the installed aluminium windows and observed

				<p>that the installation is correct in relation to the stone, window sills and aluminium sections.</p> <ul style="list-style-type: none"> • The team observed that the Contractor has not yet rectified broken edge window sills and instructed the Contractor to make the necessary rectification. • The team inspected through the electrical engineer the patch panel for the “Data System” and rejected it due to observed damages occurred during the installation. The Contractor was requested to completely replace the cabinet and reassemble the patch panel without causing any damages. The Contractor has fixed the damages as required.
2	27/07/2022	Al Khansa’ Basic Mixed School- Al Balqa	<ul style="list-style-type: none"> • Engineer Rep. 	<ul style="list-style-type: none"> • The Supervision team inspected the executed works at the playing yard and the external walls. • The team reminded the Contractor that the relation between the Plastering limit and flashing requires refinement. • The team inspected the parapet at the roof and observed that the broken stone coping is not yet replaced as instructed in the previous visit. • The team inspected the electrical and mechanical executed works at the roof. • The team has confirmed that the stone tiling done for the ramp and the entrance at zone C is executed in accordance to the approved shop drawings. • The team observed that the Contractor has not yet rectified the waving in the plastering and painting at the corridors and ceilings. • The team inspected the installation of the steel doors at the entrance of the main building and noticed

				<p>defects in the fixation of the screws.</p> <ul style="list-style-type: none"> • The team inspected the progress of work at the multi-purpose hall. • The team inspected the wet areas' in the building to check the status of all executed items. • The team inspected granite cladding and coping work at the staircase. • The team inspected the installation of lighting fixtures, painting work, tiling and wooden doors installation.
3	27/07/2022	Khadija Bint Khwailed Basic Mixed School- Al Shouna Al Janoubia	<ul style="list-style-type: none"> • Engineer Rep. 	<ul style="list-style-type: none"> • The team inspected the mechanical and electrical works executed at the roof. • The team observed that the Contractor has re-tiled the interlock tiles according to the architectural details and approved shop drawings. • The team observed in one of the rooms that the Contractor had installed the gypsum board bulkhead over the drop beam incorrectly, which can be viewed as if there are two boxes at the corner of the ceiling. The Contractor was requested to reinstall so that the bulk head covers the drop beam completely. • The team observed that the Contractor has rectified the waving in plastering and painting in the walls at the corridors. • The team Inspected the relation between granite coping and the window sill at the corridors. • The team remarked that the Contractor started rectifying the teething in granite and replacing granite pieces that have black spots with new standard acceptable ones. • The Team observed that the base plate for the wall fans and the wall on which it was installed on is damaged and will not be suitable for

				<p>the installation of the fans. The Contractor was requested to fix the damages in both the wall base plate and the wall before installing the fans.</p>
--	--	--	--	---

Home Office Support, July 16, 2022– Um Al Dananir Basic mixed School- Al Balqa

(Refer to 13.3 Site Visits Table)



SKEP III Home Office Support Site Visit Report

WAHIB
 MEDANAT
 consultant engineers

Consultant	Wahib Medanat Consultant Engineer	Rep No.	11-16072022
Contractor	Derar Saraireh & Sons for Engineering & Contracting	Tender No.	(11/2019/USAID/SKEP/3/S) Schools for a Knowledge Economy Project (SKEP) - Phase (3) Package (1, 2)
Site Name	Um Al Dananir Basic Mixed School- Al Balqa	Day/ Date	Sat. 16/07/2022
Duration of Project	450 Calendar Days	Total Project Budget	9,789,417.840 JD

No.	Visitors		Remarks
1	Suhair Amarin	- Project Dir./Head of Architectural Department	
2	Hashem Abu Kwalk	- Senior Civil Engineer	
3	Akram Khammes	- Head of Electrical Department	
4	Marwan Sonna'a	- Head of Mechanical Department	
5	Hasan Shaqboua	- Quality Control Manager	

Visit Notes

No.	Description
1	The supervision team discussed with the Contractor the connection point between the porcelain cladding at the corridors and the granite cladding at the entrance for the purpose of separation between the entrance and the kindergarten area. The team instructed the Contactor to limit the granite cladding to the staircase wall, and the cladding for the opening jamb shall be of porcelain using special beads to separate the granite from the porcelain. The Contractor executed the works according to the instructions.
2	The team observed that the Contractor has replaced the unacceptable small granite pieces at the parapet of the staircase with one whole piece as instructed.

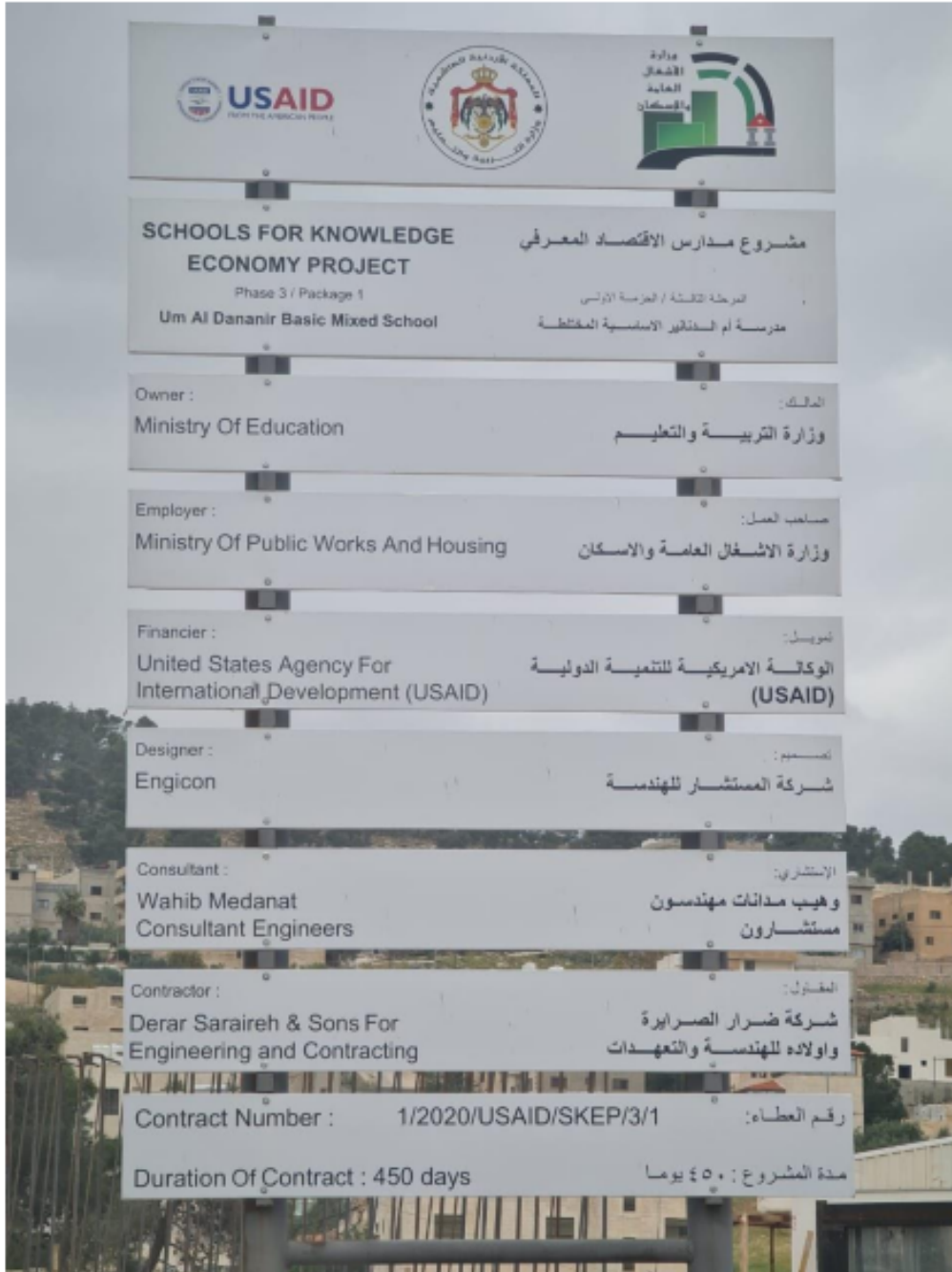


3	The team inspected the executed curtain wall at the staircase façade and observed variations regarding the fixation points, relation with the built stones at the window jambs and the window sills as well. The team requested the Contractor to check and dismantle the sections at the whole façade which are fixed incorrectly and rectify other works if needed in coordination with the supervision team. The relation between stone at the jambs, window sills, internal plastering and aluminum curtain walls should be corrected. The Contractor has made the necessary rectifications.
4	The team observed that the Contractor has removed the red grout used at the granite coping and replaced it with the approved grouting.
5	The team inspected the installed aluminum windows and observed that the installation is correct in relation to the stone, window sills and aluminum sections.
6	The team observed that the Contractor has not yet rectified broken edges window sills and instructed the Contractor to make the necessary rectification.
7	The team inspected through the electrical engineer the patch panel for the "Data System" and rejected it due to observed damages occurred during the installation. The Contractor was requested to completely replace the cabinet and reassemble the patch panel without causing any damages. The Contractor has fixed the damages as required.



SKEP III Home Office Support Site Visit Report

**WAHIB
MEDANAT**
consultant engineers



Project ID
Sign on Site

3

\\SERVER\Data\F\PROJECTS FILES\368\Home
office support Site Visits\July 2022\11-
16072022.docx

Form # QP SUP 01-18, Rev.1



SKEP III Home Office Support Site Visit Report

WAHIB
MEDANAT
consultant engineers



General view
of the project
site

(figure:01, 02, 03
and 04)

(figure:01)



(figure:02)



SKEP III Home Office Support Site Visit Report

WAHIB
MEDANAT
consultant engineers



(figure:03)



(figure:04)



SKEP III Home Office Support Site Visit Report

WAHIB
MEDANAT
consultant engineers



The team previously inspected the granite at the staircase parapet and requested the Contractor to remove small pieces and replace by one piece

(Before)

(figure:05)



The team observed that the Contractor has replaced the unacceptable small granite pieces with one whole piece as instructed

(After)

(figure:06)

6

\\SERVER\Data\F\PROJECTS FILES\368\Home
office support Site Visits\July 2022\11-
16072022.docx

Form # QP SUP 01-18, Rev.1



SKEP III Home Office Support Site Visit Report

WAHIB
MEDANAT
consultant engineers



The team observed that the Contractor has not yet rectified broken edges window sills and instructed the Contractor to make the necessary rectification

(figure:07)



The team had previously discussed with the Contractor the connection point between the porcelain cladding at the corridors and the granite cladding at the entrance for the purpose of separating the entrance and the kindergarten area

(Before)

(figure:08 & 09)

(figure:08)

7

\\SERVER\Data\F\PROJECTS FILES\368\Home
office support Site Visits\July 2022\11-
16072022.docx

Form # QP SUP 01-18, Rev.1



SKEP III Home Office Support Site Visit Report

WAHIB
MEDANAT
consultant engineers



The team instructed the Contractor to limit the granite cladding to the staircase wall, and the cladding for the opening jamb shall be of porcelain using special beads to separate the granite from the porcelain. The Contractor executed the works according to the instructions

(figure:09)



SKEP III Home Office Support Site Visit Report

WAHIB
MEDANAT
consultant engineers



The Contractor executed the works according to the instructions

(After)

(figure:10 & 11)

(figure:10)

9

\\SERVER\Data\F\PROJECTS FILES\368\Home office support Site Visits\July 2022\11-16072022.docx

Form # QP SUP 01-18, Rev.1



SKEP III Home Office Support Site Visit Report

WAHIB
MEDANAT
consultant engineers



(After)

(figure: 11)



SKEP III Home Office Support Site Visit Report

WAHIB
MEDANAT
consultant engineers



The team observed using red grout for granite coping at the corridors which does not comply with the approved grout in relation to color.

(Before)

(figure:12)



the Contractor has removed the red grout and replaced it with the approved grout

(After)

(figure:13)



SKEP III Home Office Support Site Visit Report

WAHIB
MEDANAT
consultant engineers



The team inspected the executed curtain wall at the staircase façade and observed variations regarding the fixation points, relation with the built stones at the window jambs and the window sills as well. The team requested the Contractor to check and dismantle the sections at the whole façade which are fixed incorrectly and rectify other works if needed in coordination with the supervision team

(Before)

(figure:14)



SKEP III Home Office Support Site Visit Report

WAHIB
MEDANAT
consultant engineers



The Contractor
has rectified as
instructed

(After)

(figure:15)



SKEP III Home Office Support Site Visit Report

WAHIB
MEDANAT
consultant engineers



The team inspected through the electrical engineer the patch panel for the "Data System" and rejected it due to observed damages occurred during the installation. The Contractor was requested to completely replace the cabinet and reassemble the patch panel without causing any damages

(Before)

(figure:16)

14

\\SERVER\Data\F\PROJECTS FILES\368\Home
office support Site Visits\July 2022\11-
16072022.docx

Form # QP SUP 01-18, Rev.1



The team observed that the Contractor fixed the damages in the data system

(After)

(figure:17)



SKEP III Home Office Support Site Visit Report

WAHIB
MEDANAT
consultant engineers



the team inspected the installed aluminum windows and observed that the installation is correct in relation to the stone, window sills and aluminum sections

(figure:18)

16

\\SERVER\Data\F\PROJECTS FILES\368\Home
office support Site Visits\July 2022\11-
16072022.docx

Form # QP SUP 01-18, Rev.1

Home Office Support, July 27, 2022– Al Khansa’ Basic Mixed School- Al Balqa

(Refer to 13.3 Site Visits Table)



SKEP III Home Office Support Site Visit Report

WAHIB
 MEDANAT
 consultant engineers

Consultant	Wahib Medanat Consultant Engineer	Rep No.	12-27072022
Contractor	Derar Saraireh & Sons for Engineering & Contracting	Tender No.	(11/2019/USAID/SKEP/3/S) Schools for a Knowledge Economy Project (SKEP) - Phase (3) Package (1, 2)
Site Name	Al Khansa’ Basic Mixed School- Al Balqa	Day/ Date	Wed. 27/07/2022
Duration of Project	450 Calendar Days	Total Project Budget	9,789,417.840 JD

No.	Visitors		Remarks
1	Suhair Amarin	- Project Dir./Head of Architectural Department	
2	Hashem Abu Kwaik	- Senior Civil Engineer	
3	Akram Khammes	- Head of Electrical Department	
4	Marwan Sonna’a	- Head of Mechanical Department	
5	Hasan Shaqboua	- Quality Control Manager	

Visit Notes

No.	Description
1	The Supervision team inspected the executed works at the playing yard and the external walls.
2	The team reminded the Contractor that the relation between the Plastering limit and flashing requires refinement.
3	The team inspected the parapet at the roof and observed that the broken stone coping is not yet replaced as instructed in the previous visit.
4	The team inspected the electrical and mechanical executed works at the roof.

1



5	The team has confirmed that the stone tiling done for the ramp and the entrance at zone C is executed in accordance to the approved shop drawings.
6	The team observed that the Contractor has not yet rectified the waving in the plastering and painting at the corridors and ceilings.
7	The team inspected the installation of the steel doors at the entrance of the main building and noticed defects in the fixation of the screws.
8	The team inspected the progress of work at the multi-purpose hall.
9	The team inspected the wet areas' in the building to check the status of all executed items.
10	The team inspected granite cladding and coping work at the staircase.
11	The team inspected the installation of lighting fixtures, painting work, tiling and wooden doors installation.



SKEP III Home Office Support Site Visit Report

**WAHIB
MEDANAT**
consultant engineers



Project ID
Sign on Site



SKEP III Home Office Support Site Visit Report

WAHIB
MEDANAT
consultant engineers



General view of the project site

(Figure: 01, 02, 03, 04 & 05)

(Figure: 01)



(Figure: 02)



SKEP III Home Office Support Site Visit Report

WAHIB
MEDANAT
consultant engineers



(Figure: 03)



(Figure: 04)

5



SKEP III Home Office Support Site Visit Report

WAHIB
MEDANAT
consultant engineers



(Figure: 05)



The Supervision team inspected the executed works at the playing yard and the external walls

(Figure: 06)



SKEP III Home Office Support Site Visit Report

WAHIB
MEDANAT
consultant engineers



The team reminded the Contractor that the relation between the Plastering limit and flashing requires refinement

(Figure: 07)



The team inspected the parapet at the roof and observed that the broken stone coping is not yet replaced as instructed in the previous visit

(Figure: 08)



SKEP III Home Office Support Site Visit Report

WAHIB
MEDANAT
consultant engineers



The team inspected the electrical and mechanical executed works at the roof

(Figure: 09)



The team has confirmed that the stone tiling done for the ramp and the entrance at zone C is executed in accordance to the approved shop drawings

(Figure: 10)



SKEP III Home Office Support Site Visit Report

WAHIB
MEDANAT
consultant engineers



(Figure: 11)

The team inspected the installation of the steel doors at the entrance of the main building and noticed defects in the fixation of the screws

(Figure: 11 & 12)



(Figure: 12)



SKEP III Home Office Support Site Visit Report

WAHIB
MEDANAT
consultant engineers



(Figure: 13)

The team inspected the progress of work at the multi-purpose hall



(Figure: 13 & 14)

(Figure: 14)



SKEP III Home Office Support Site Visit Report

WAHIB
MEDANAT
consultant engineers



The team observed that the Contractor has not yet rectified the waving in the plastering and painting at the corridors and ceilings

(Figure: 15)



SKEP III Home Office Support Site Visit Report

WAHIB
MEDANAT
consultant engineers



The team inspected the 'wet areas' in the building to check the status of all executed items

(Figure: 16)



The team inspected granite cladding and coping work at the staircase

(Figure: 17)



SKEP III Home Office Support Site Visit Report

WAHIB
MEDANAT
consultant engineers



The team inspected the installation of lighting fixtures, painting work, tiling and wooden doors installation

(Figure: 18)

Home Office Support, July 27, 2022– Khadija Bint Khwailed Basic Mixed School- Al Shouna Al Janoubia

(Refer to 13.3 Site Visits Table)



SKEP III Home Office Support Site Visit Report

WAHIB
 MEDANAT
 consultant engineers

Consultant	Wahib Medanat Consultant Engineer	Rep No.	13-27072022
Contractor	Derar Saraireh & Sons for Engineering & Contracting	Tender No.	(11/2019/USAID/SKEP/3/S) Schools for a Knowledge Economy Project (SKEP) - Phase (3) Package (1, 2)
Site Name	Khadija Bint Khwailed Basic Mixed School- Shouna Janoubia	Day/ Date	Wed. 27/07/2022
Duration of Project	450 Calendar Days	Total Project Budget	9,789,417.840 JD

No.	Visitors		Remarks
1	Suhair Amarin	- Project Dir./Head of Architectural Department	
2	Hashem Abu Kwaik	- Senior Civil Engineer	
3	Akram Khammes	- Head of Electrical Department	
4	Marwan Sonna'a	- Head of Mechanical Department	
5	Hasan Shaqboua	-Quality Control Manager	

Visit Notes

No.	Description
1	The team inspected the mechanical and electrical works executed at the roof.
2	The team observed that the Contractor has re-tiled the interlock tiles according to the architectural details and approved shop drawings



3	The team observed in one of the rooms that the Contractor had installed the gypsum board bulkhead over the drop beam incorrectly, which can be viewed as if there are two boxes at the corner of the ceiling. The Contractor was requested to reinstall so that the bulk head covers the drop beam completely.
4	The team observed that the Contractor has rectified the waving in plastering and painting in the walls at the corridors.
5	The team Inspected the relation between granite coping and the window sill at the corridors.
6	The team remarked that the Contractor started rectifying the teething in granite and replacing granite pieces that have black spots with new standard acceptable ones.
7	The Team observed that the base plate for the wall fans and the wall on which it was installed on is damaged and will not be suitable for the installation of the fans. The Contractor was requested to fix the damages in both the wall base plate and the wall before installing the fans.



SKEP III Home Office Support Site Visit Report

**WAHIB
MEDANAT**
consultant engineers



Project ID Sign on Site

3

\\SERVER\Data\F\PROJECTS FILES\368\Home office support Site Visits\July 2022\13-27072022.docx

Form # QP SUP 01-18, Rev.1



SKEP III Home Office Support Site Visit Report

WAHIB
MEDANAT
consultant engineers



General view
of the project

(Figure: 01, 02, 03,
04 & 05)

(Figure: 01)



(Figure: 02)



(Figure: 03)



SKEP III Home Office Support Site Visit Report

WAHIB
MEDANAT
consultant engineers



(Figure: 04)



(Figure: 05)



SKEP III Home Office Support Site Visit Report

WAHIB
MEDANAT
consultant engineers



(Figure: 06)

The team inspected the mechanical and electrical works executed at the roof

(Figure: 06 & 07)



(Figure: 07)



SKEP III Home Office Support Site Visit Report

WAHIB
MEDANAT
consultant engineers



The team noticed that the Contractor had installed the gypsum board bulkhead over the drop beam incorrectly

(Figure: 08)



The team previously observed that the Contractor has installed interlock tiles in an unacceptable way with regard to the architectural details and approved shop drawings

(Before)

(Figure: 09)



SKEP III Home Office Support Site Visit Report

WAHIB
MEDANAT
consultant engineers



The Contractor has retiled the interlock tiles according to the architectural details and approved shop drawings

(After)

(Figure: 10)

8



SKEP III Home Office Support Site Visit Report

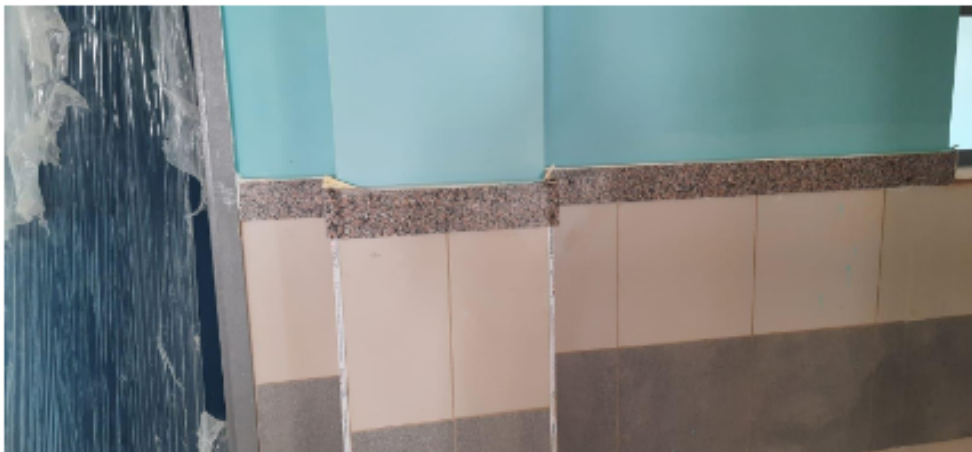
WAHIB
MEDANAT
consultant engineers



The team previously observed that there is some waving in the plastering and painting at the corridors

(Before)

(Figure: 11)



The team noticed that the Contractor rectified the waving in the plastering

(After)

(Figure: 12)



SKEP III Home Office Support Site Visit Report

WAHIB
MEDANAT
consultant engineers



The team inspected the relation between granite coping and the window sill at the corridor

(Figure: 13)



The team observed black spots on the granite cladding of the staircases and requested the Contractor to replace

(Before)

(Figure: 14)

10

\\SERVER\Data\2\PROJECTS FILES\368\Home
office support Site Visits\July 2022\13-
27072022.docx

Form # QP SUP 01-18, Rev.1



the Contractor started with rectification of the teething in granite and replacing granite pieces that have black spots with new standard acceptable ones

(After)

(Figure: 15)



SKEP III Home Office Support Site Visit Report

WAHIB
MEDANAT
consultant engineers



The Team observed that the base plate for the wall fans and the wall on which it was installed is damaged and will not be suitable for the installation of the fans. The Contractor was requested to fix the damages in both the base plate and the wall before installing the fans

(Figure: 16)

14 | Manpower Logs

14.1 Um–Al Dananir Basic Mixed School– Balqa

14.2 Al Khansa’ Basic Mixed School– Balqa

14.3 Khadija Bint Khwailed Basic Mixed School– Balqa

- <https://docs.google.com/spreadsheets/d/e/2PACX-1vT4ytLAKrJ-FF53BIGSNhGobzYfnEq1CBzpdqBMVQMhKHbuoX8c8qPnBFMwjaZ1Alf6JwxtK0k8tpFU/pubhtml>

15 | Daily Plant and Equipment

15.1 Um–Al Dananir Basic Mixed School– Balqa

15.2 Al Khansa’ Basic Mixed School– Balqa

15.3 Khadija Bint Khwailed Basic Mixed School– Balqa

- <https://docs.google.com/spreadsheets/d/e/2PACX-1vSjS7gfxbrlCnwA8CThRIWS51ZlZYYhODhDVDofdNZVziAkCFDqOI-MWrOZnlORH8M6oKPM4jhXTrCN/pubhtml>

16 | Lab-test Results Tracking Log

16.1 Um-Al Dananir Basic Mixed School- Balqa

16.2 Al Khansa' Basic Mixed School- Balqa

16.3 Khadija Bint Khwailed Basic Mixed School- Balqa

- ❑ https://docs.google.com/spreadsheets/d/e/2PACX-1vQBGxK90xNuE_XtcSYAEhtAWusSEX4HyYj5krkOOxyRVAZERtVtkz6rIVdw-ZgrXmB4eEPk735_prL3/pubhtml

16.4 Comments on Laboratory Testing

The laboratory testing for various materials continued and the involved laboratories are the approved laboratory "CORINTHI for Testing, Engineering and Consulting" and the "Royal Scientific Society" laboratories.

The testing was conducted on concrete samples, tiling, stones, plastering accessories and MEP materials.

Most of the materials passed the requirements of specifications. In the cases where the material did not pass, the Contractor was requested to replace the representative quantity of the said material and re-testing was then conducted on the new material.

17 | Obstacles Log (Site Obstacles)

- ❑ <https://docs.google.com/spreadsheets/d/e/2PACX-1vTEJ6jgjLZI43nyf6Y6aYb1JpgDjnGOfNe9zcuaE1ZEPedtuDzFD9rlq-rqBdzJNNZGn6l0jE4T008E/pubhtml?gid=0&single=true>

17.1 Um Al Dananir Basic Mixed School – Al Balqa



Figure 1. . Encroaching on the site boundary

SOLVED

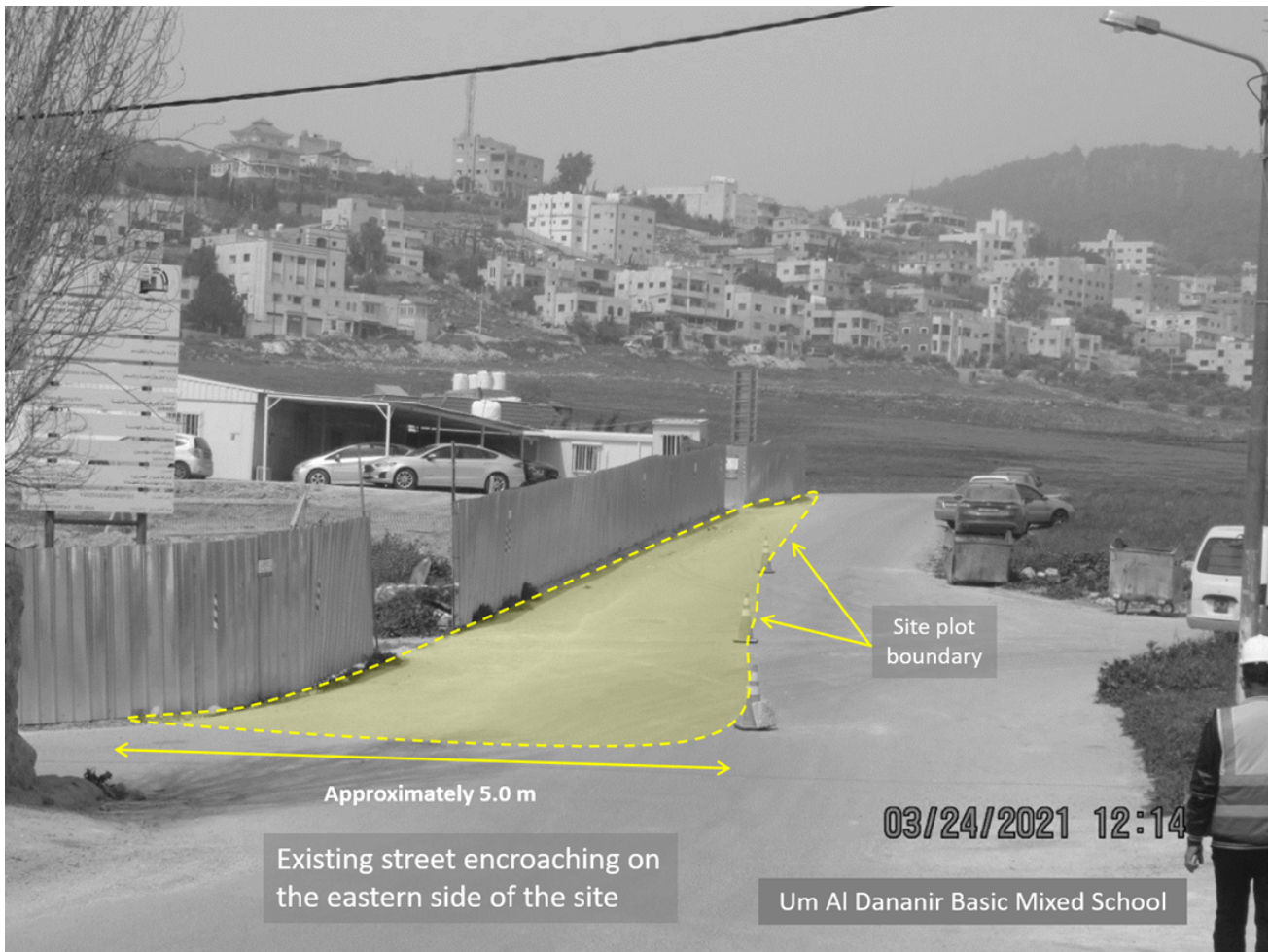


Figure 2. There is an encroachment of the existing street toward the site and this will affect the construction of the eastern boundary wall

SOLVED

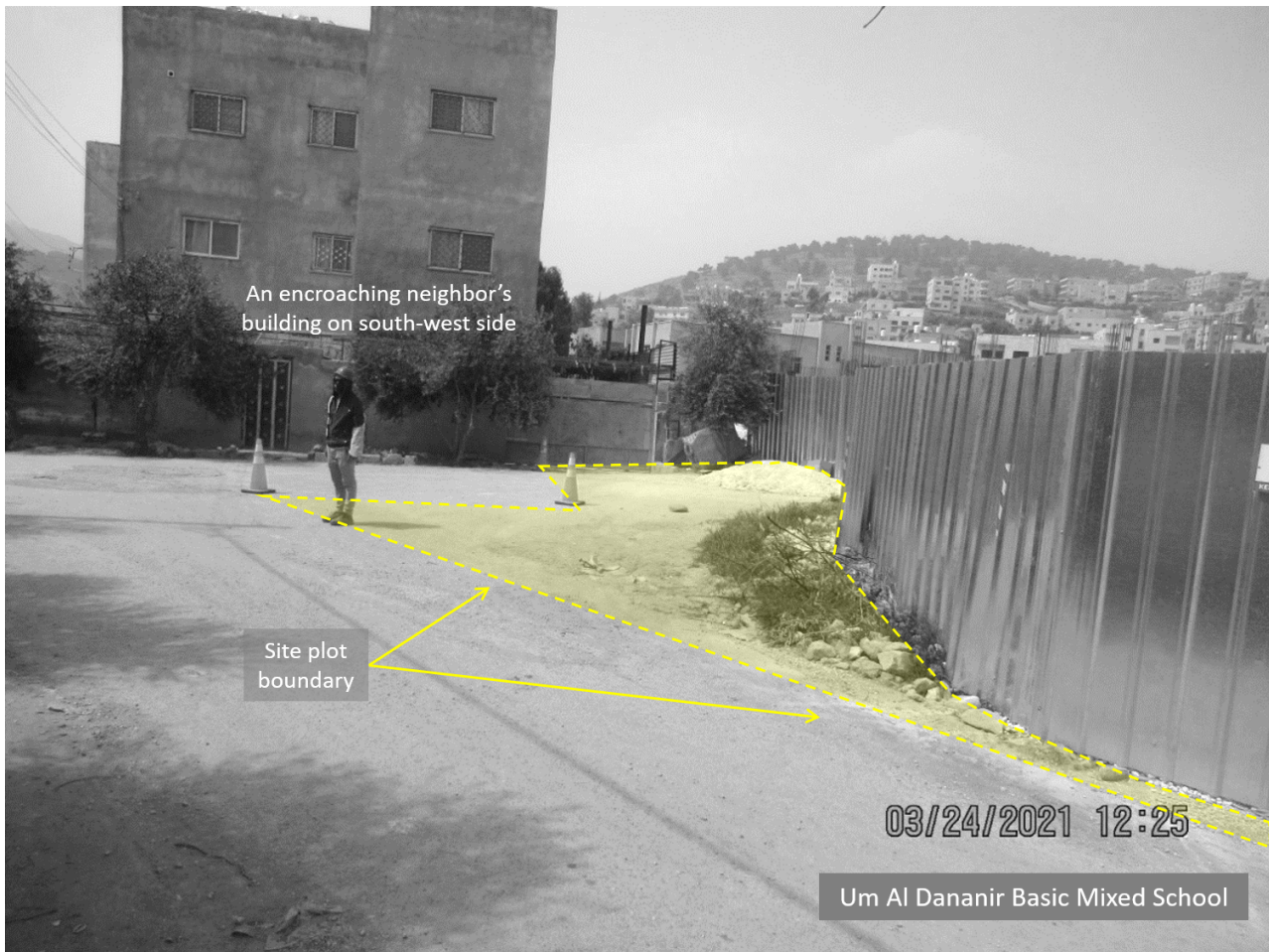


Figure 3. There is an encroachment of the existing neighbor's building toward the site

SOLVED

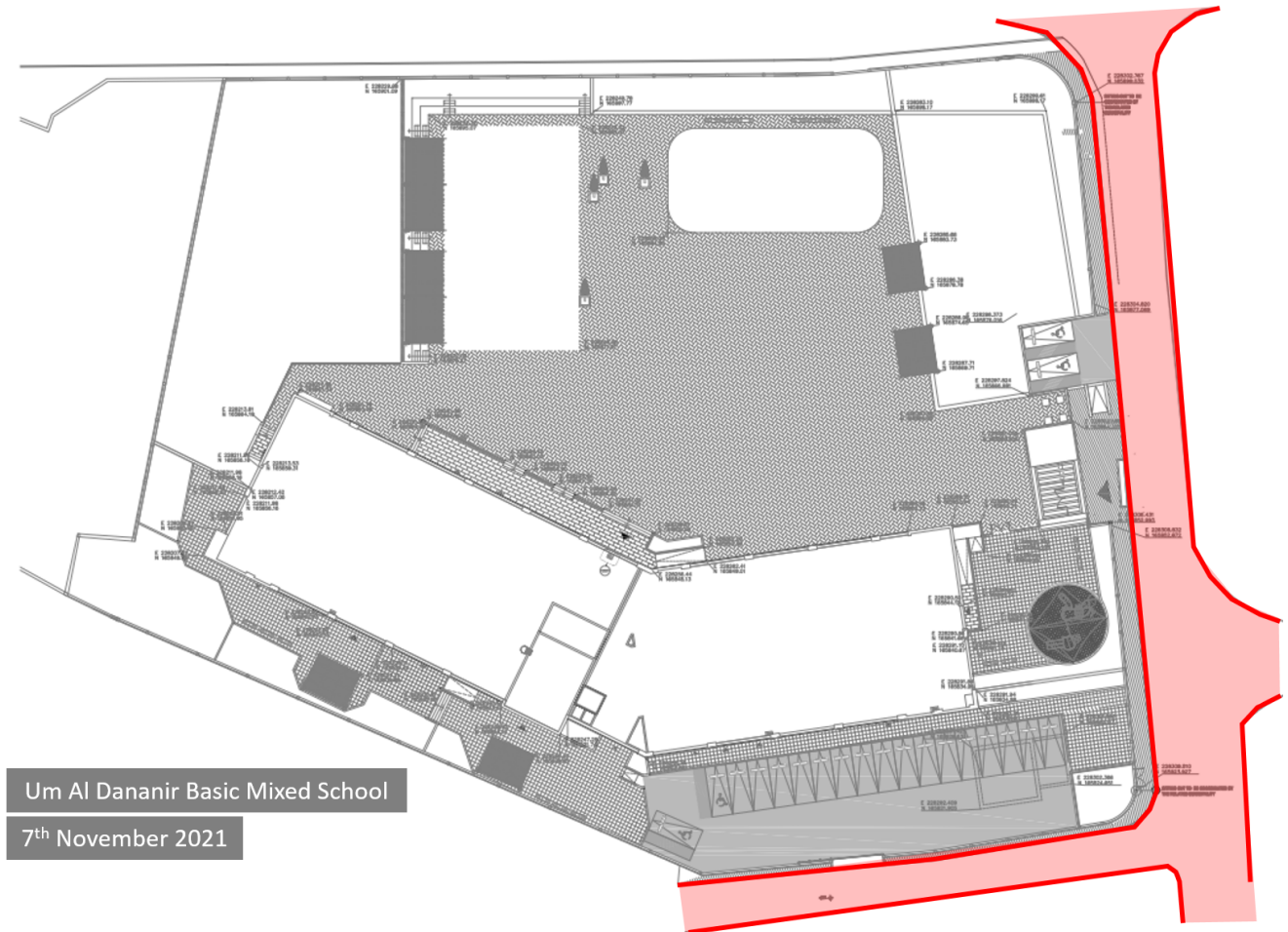


Figure 4 .The problem has been **solved** and a modified site plan drawings were issued

17.2 Khadija Bint Khwailed Basic Mixed School- Balqa

Obstacles Log (Site Obstacles) **SOLVED**



Khadija Bint Khwailed Basic Mixed - Balqa

There is an encroachment of the existing neighbour's building toward the site

SOLVED

18 | Weather Condition

18.1 Um-Al Dananir Basic Mixed School- Balqa

- ❑ <https://docs.google.com/spreadsheets/d/e/2PACX-1vTW8HNvqp3ym9POCxyPGrC8OHZ1f2EEwDnRxSB6gncONxGPBnye2SqbIq5PimElloTbSJESyrYNQR7k/pubhtml?gid=0&single=true>

18.2 Al Khansa' Basic Mixed School- Balqa

- ❑ <https://docs.google.com/spreadsheets/d/e/2PACX-1vTW8HNvqp3ym9POCxyPGrC8OHZ1f2EEwDnRxSB6gncONxGPBnye2SqbIq5PimElloTbSJESyrYNQR7k/pubhtml?gid=295583832&single=true>

18.3 Khadija Bint Khwailed Basic Mixed School- Balqa

- ❑ <https://docs.google.com/spreadsheets/d/e/2PACX-1vTW8HNvqp3ym9POCxyPGrC8OHZ1f2EEwDnRxSB6gncONxGPBnye2SqbIq5PimElloTbSJESyrYNQR7k/pubhtml?gid=174180114&single=true>

19 | Selected Photos

19.1 Um-Aldananir Basic Mixed School- Al Balqa



Blockwork for the boundary walls no.01 and 07

02/07/2022



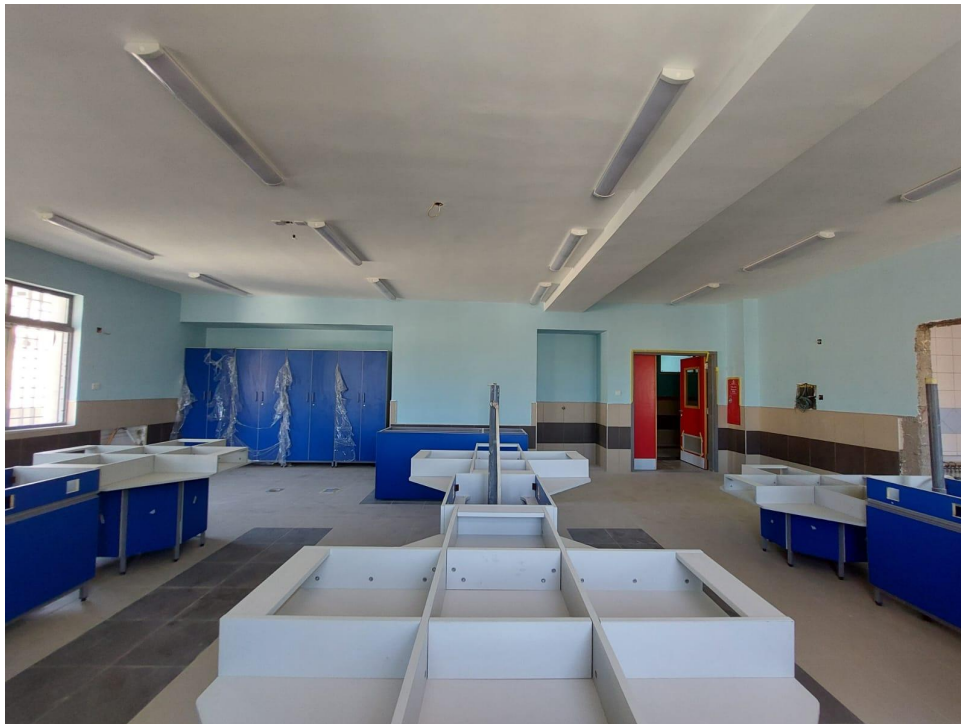
Installing carton boards for the foundation of the amphitheatre and columns of the shadings

14/07/2022



Casting concrete for the slab on grade at the southern side of the building

23/07/2022



Installing Furniture for the general science lab

23/07/2022



Interlock tiling
at the south-
eastern side of
the building

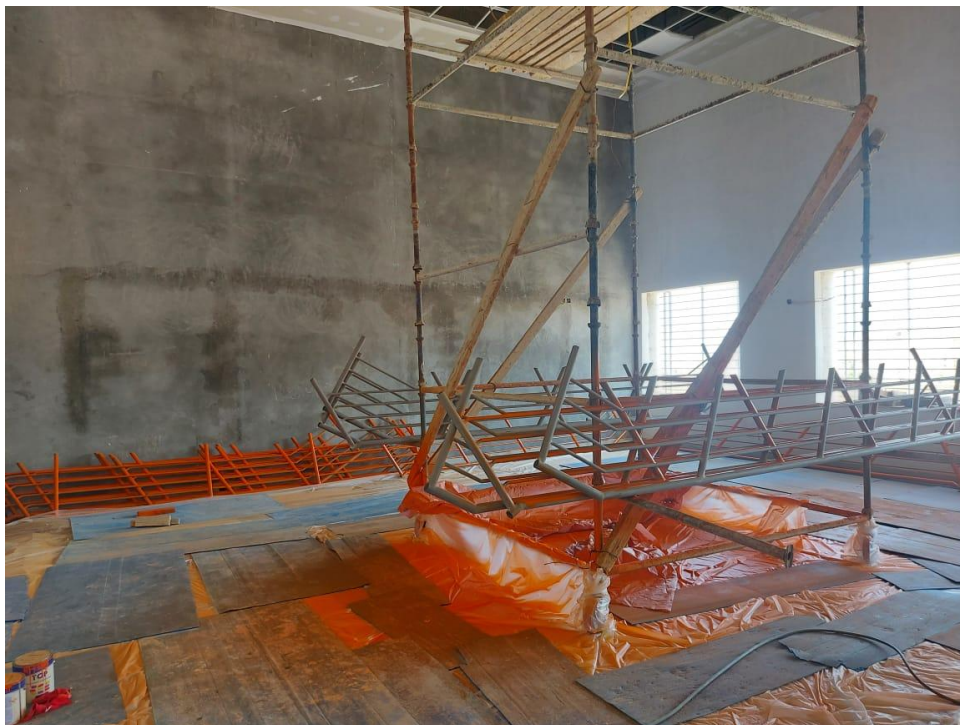
31/07/2022

19.2 Al Khansa Basic Mixed School- Al Balqa



General view of the project site

03/07/2022



Painting delivered handrails for the internal staircases

13/07/2022



Stone tiling for
the main
entrance at
Zone B

18/07/2022



Suspended
ceiling and
painting works
at the
multi-purpose
hall

24/07/2022



Delivering
Laboratories
furniture

31/07/2022



Steel
reinforcement
for the
multi-purpose
hall terrace

31/07/2022

19.3 Khadija Bint Khwailed Basic Mixed School – Al-Shouna Al-Janobia



Interlock tiling
at the Core
area between
Zones A and B

03/07/2022



Insulation work
at the roof of
zone C and
External works
at the front area

17/07/2022



Formwork and steel reinforcement for the amphitheatre

21/07/2022



Interlock tiling for the sidewalks

29/07/2022

20 | Location Links

20.1 Um Al Dananir Basic Mixed School – Balqa

20.2 Al Khansa'a Basic Mixed School – Balqa

20.3 Khadija Bint Khwailed Basic Mixed School – Balqa

21 | Website Reports Links

21.1 Daily Reports

Updated daily

21.2 Weekly Reports

Updated weekly

21.3 Monthly Reports

Updated monthly

21.4 CMTO Inspection Reports

Updated weekly

21.5 Quality Reports

Updated weekly

22 | Training

22.1 Training:

SKEPIII Site staff training sessions

We conduct one effective training session per week for both our staff and the contractor staff including fresh graduates. The training is conducted by our senior engineers from various disciplines and backgrounds. Our future plan for staff training is to host external trainers from the Ministry of Local Administration to talk about Municipalities regulations.



21.2 Training Sessions:

A- Training Sessions July 2022

1. Training Session
 - 1.1. Why and When Construction Equipment Should Be Upgraded
04.07.2022
2. Training Session
 - 2.1. How to Apply for a Job as a Fresh Graduate Engineer
14.07.2022
3. Training Session
 - 3.1. The Importance of Communication in the Construction Industry
19.07.2022



For More Details:

- Training Link:
- <https://www.medanat.site/training>