



SKEP III Home Office Support Site Visit Report

**WAHIB
MEDANAT**
consultant engineers

Consultant	Wahib Medanat Consultant Engineer	Rep No.	12-09052022
Contractor	Derar Saraireh & Sons for Engineering & Contracting	Tender No.	(11/2019/USAID/SKEP/3/S) Schools for a Knowledge Economy Project (SKEP) - Phase (3) Package (1, 2)
Site Name	Al Khansa' Basic Mixed School- Al Balqa	Day/ Date	Mon. 09/05/2022
Duration of Project	450 Calendar Days	Total Project Budget	9,789,417.840 JD

No.	Visitors		Remarks
1	Suhair Amarin	- Project Dir./Head of Architectural Department	
2	Hashem Abu Kwaik	- Senior Civil Engineer	
3	Akram Khammes	- Head of Electrical Department	
4	Marwan Sonna'a	- Head of Mechanical Department	
5	Hasan Shaqboua	- Quality Control Manager	

Visit Notes

No.	Description
1	The supervision team inspected the primer layer sample of the external colored plastering for boundary walls prepared by the Contractor for a limited area. The team instructed the Contractor to continue to prepare complete sample for all layers including execution method for the Engineer's review and approval.
2	The team inspected the current works in the excavations of the playing yard and the external wall.
3	The team inspected the sample prepared by the Contractor for the granite coping continuation at the window jamb and approved it.



4	The team observed the delivered quantities at site for the acoustical gypsum tiles (60cm x 60cm) and ensured the compliance with the approved sample.
5	The team inspected the wall tiles and the relation with the door frame at the child care at the (KG) area.
6	The team inspected the installed sample of electrical socket with cover at the (KG) area and approved it based on the approved workshop drawings.
7	The team observed defects in the delivered cabinets for the (KG) and requested the Contractor to rectify. The defects include the laminated partitions, un-vertical ironmongery handles and defects in beech wood sections.
8	The team discussed with the Contractor the color scheme distribution for the (KG).
9	The team observed that the Contractor delivered and started with the installation of lighting fixtures at the library and the corridors.
10	The team inspected the current works going on in the multi-purpose hall.
11	The team inspected the preparation by the Contractor to install the granite coping at the corridors, chipping of plastering at the coping line to ensure compliance with drawings.
12	The team discussed with the Contractor the details related to the execution work of the external ramp adjoining the main entrance and observed variation from the approved workshop drawings. The team requested the Contractor to submit revised drawings to re-study the levels at the area by the Engineer and specify the method of installation of the handrail there.
13	The team discussed with the Contractor the details related to the staircases granite upstands and the connection between coping, staircase and handrail.
14	The team inspected the executed expansion joints at the corridors.



15	The team inspected the executed granite skirting for the staircases.
16	The team inspected the executed granite coping at the window jamb (see point no.3 above) and observed a contradiction with the approved sample regarding the prominence of the granite piece. The Contractor was requested to rectify.



Project ID
Sign on Site





General view of the project site
(Figure: 01, 02, 03 & 04)

(Figure: 01)



(Figure: 02)



(Figure: 03)



(Figure: 04)



Inspecting the external colored plastering sample for boundary walls

(Figure: 05)



The team discussed with the Contractor the details related to the execution work of the external ramp adjoining the main entrance and observed variation from the approved workshop drawings

(Figure: 06)



(Figure: 07)

The team inspected the current works in the excavations of the playing yard and the external wall



(Figure: 07 & 08)

(Figure: 08)



The team inspected the sample prepared by the Contractor for the granite coping continuation at the window jamb and approved it

(Figure: 09)



Inspecting delivered quantities of acoustical gypsum tiles (60cm*60cm) and ensuring they comply with the approved sample

(Figure: 10)



(Figure: 11)

The team discussed with the Contractor the details related to the staircases granite upstands and the connection between coping, staircase and handrail



(Figure: 11 & 12)

(Figure: 12)



The team inspected the wall tiles and the relation with the door frame at the child care at the (KG) area

(Figure: 13)



The team inspected the installed sample of electrical socket with cover at the (KG) area and approved it based on the approved workshop drawings

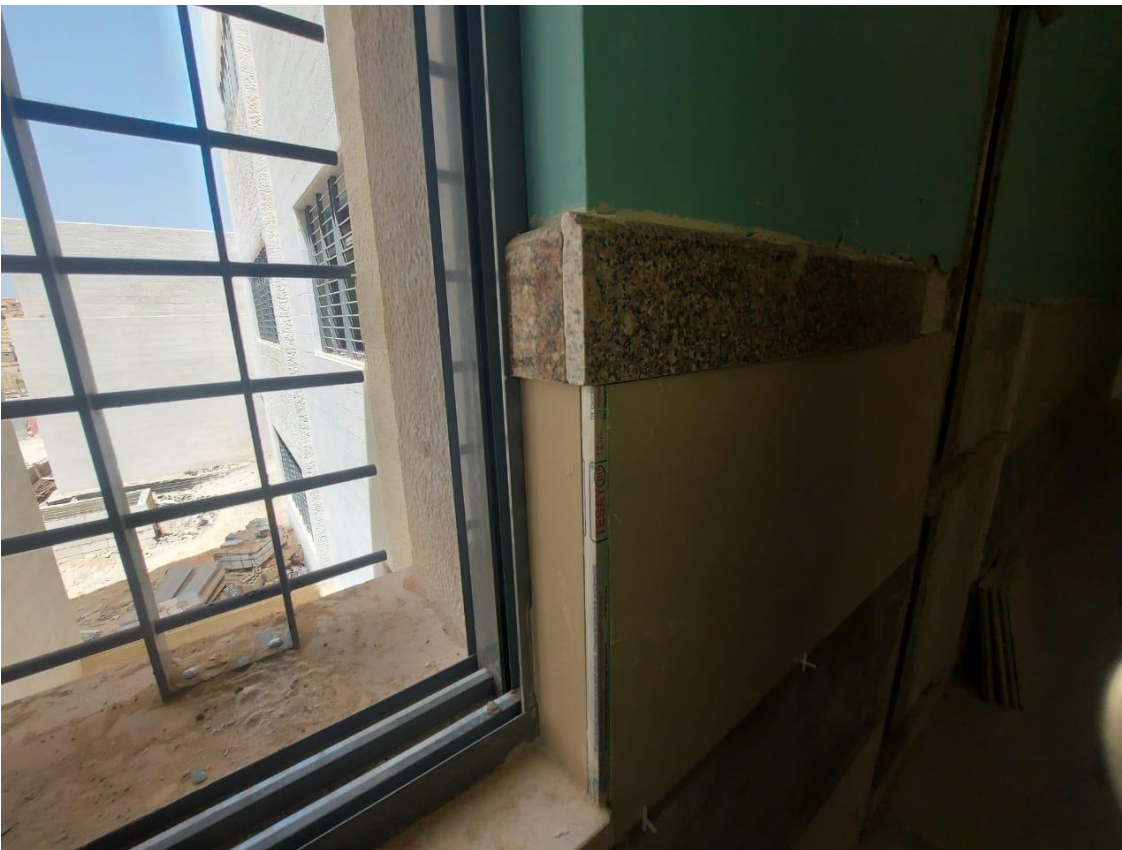
(Figure: 14)



(Figure: 15)

The team inspected the executed granite coping at the window jamb (see point no.3 above) and observed a contradiction with the approved sample regarding the prominence of the granite piece. The Contractor was requested to rectify

(Figure: 15 & 16)

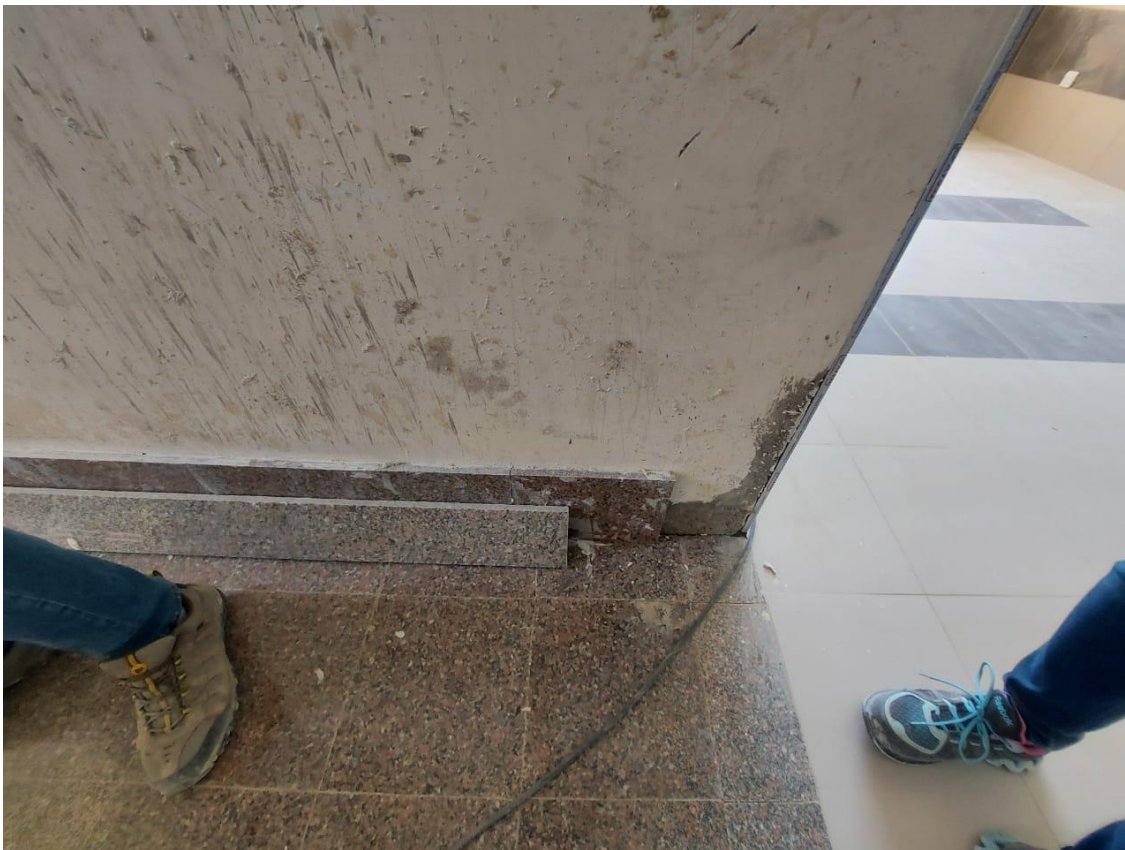


(Figure: 16)



(Figure: 17)

The team inspected the executed granite skirting for the staircases



(Figure: 17 & 18)

(Figure: 18)



The team inspected the preparation by the Contractor to install the granite coping at the corridors, chipping of plastering at the coping line to ensure compliance with the drawings

(Figure: 19)



The team discussed with the Contractor the color distribution scheme for the (KG)

(Figure: 20)



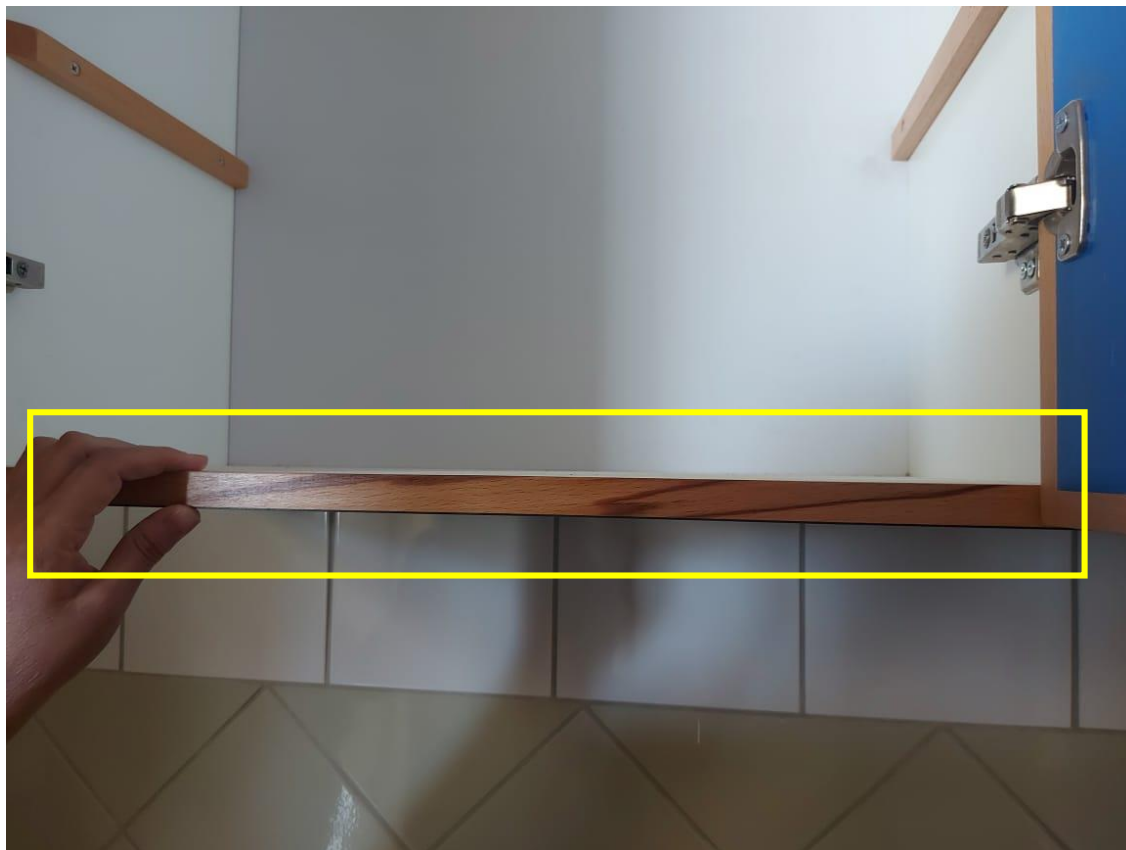
The team inspected the executed expansion joints at the corridors

(Figure: 21)



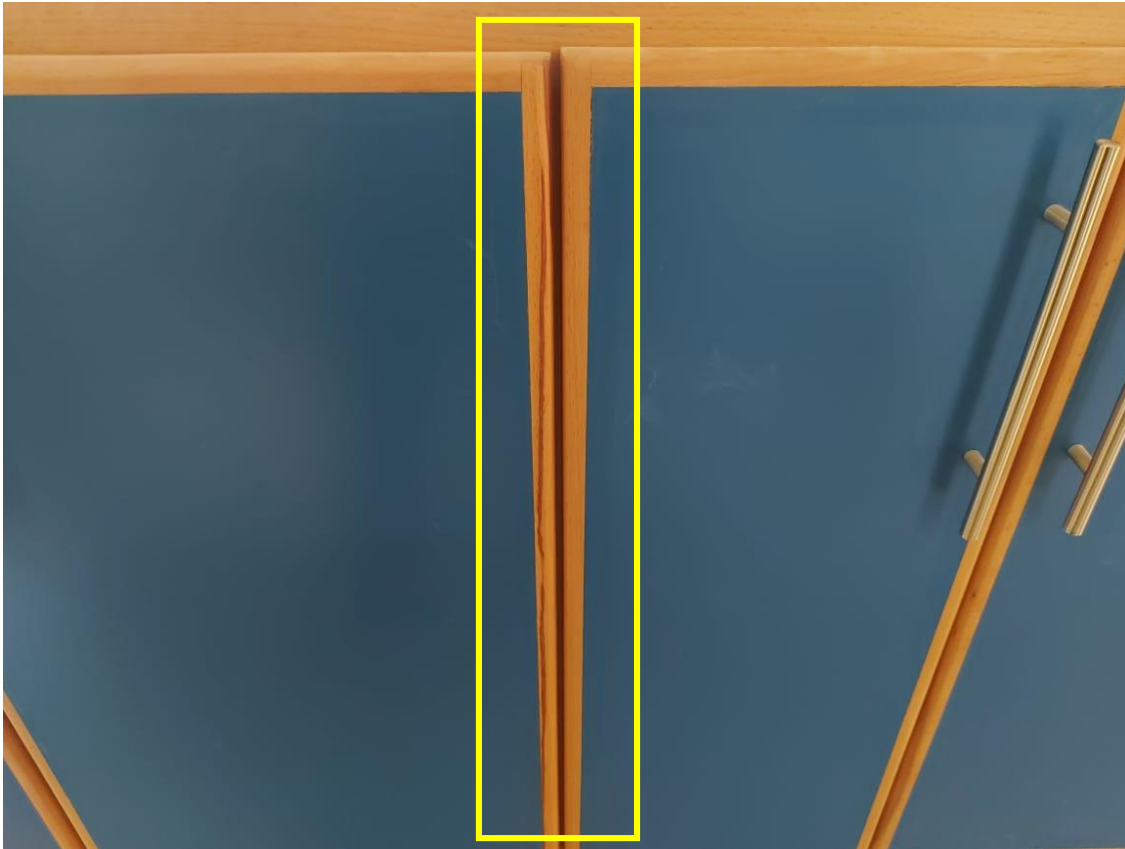
(Figure: 22)

The team observed defects in the delivered cabinets for the (KG) and requested the Contractor to rectify. The defects include the laminated partitions, unvertical ironmongery handles and defects in beech wood sections.

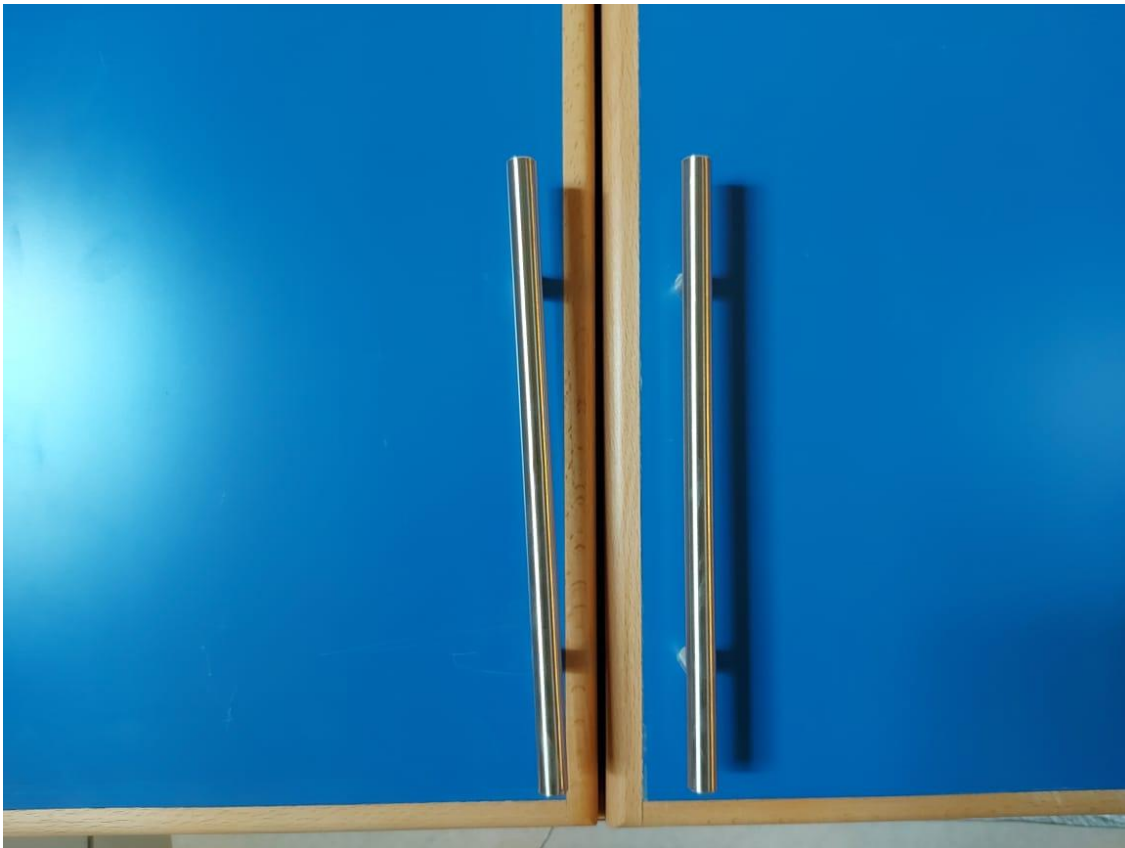


(Figure: 22, 23, 24, 25, 26 & 27)

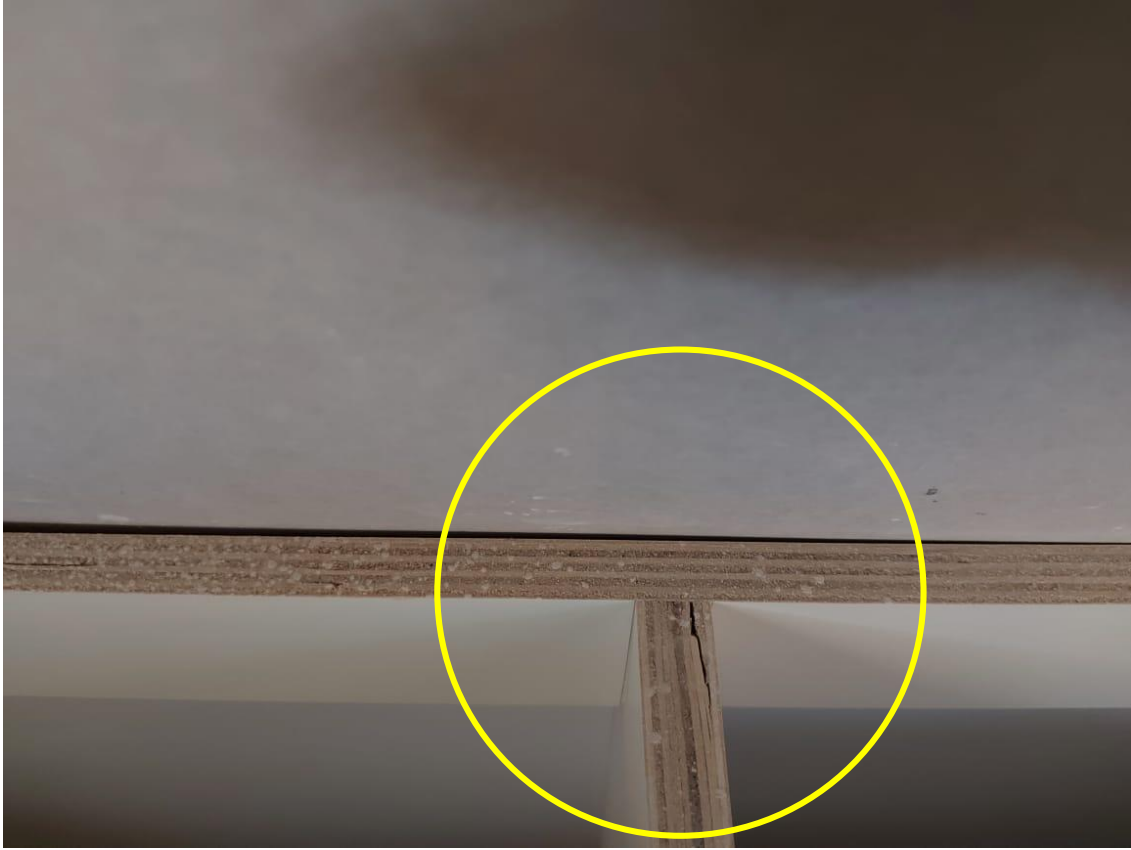
(Figure: 23)



(Figure: 24)



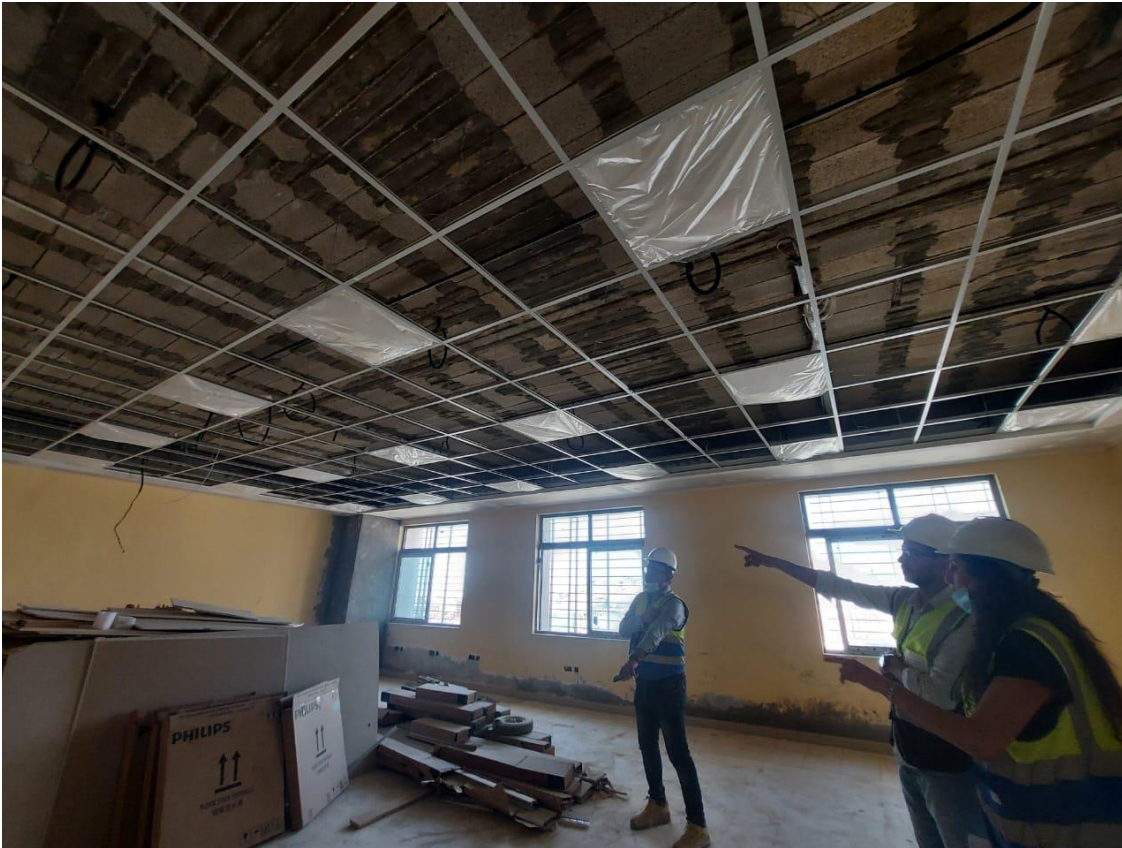
(Figure: 25)



(Figure: 26)



(Figure: 27)



The team observed that the Contractor delivered and started with the installation of lighting fixtures at the library and the corridors

(Figure: 28)



The team inspected the current works going on in the multi-purpose hall

(Figure: 29)