

Quality Control Report

Consultant **Wahib Medanat** Consultant Engineers
Site Name **Khadija Bint Khwailed Basic Mixed - Balqa**
Package **Package 1**
Contractor **Derar Saraireh & Sons for Engineering & Contracting**
Tender No. **1/2020/USAID/SKEP/3/1**

Rep No. **QC-13 17**
Date **9 / 05 / 2022**

Description of Non Conformance	Corrective Action	Required by / When
1. Small cut-off pieces of porcelain and grout fill at the internal ramp walls. 2. Teething in porcelain floor tiles in one room. 3. Cracks and voids in concrete casted cover at the expansion joint. 4. The steel protection screens not rectified yet.	1. Rectify. 2. Rectify. 3. Repair. 4. Rectify.	The Contractor/Immediately
Report Prepared by	Hassan Shaqbua, Supervision Quality Control Manager	
Contractor's Response	The Contractor responded to remarks no.1, 2 and 4.	
Notes		

Consultant Site Engineer

Contractor Site Engineer

Signature

Signature

Quality Control Report

Before Photos:



Defects in cut-off pieces in ramp



Teething in porcelain floor tiles

Consultant Site Engineer

Signature

Contractor Site Engineer

Signature

Quality Control Report



Cracks and voids in concrete cover



Defected steel protection screens

Consultant Site Engineer

Contractor Site Engineer

Signature

Signature

Quality Control Report

Photos After:



Replacement for cut-off pieces

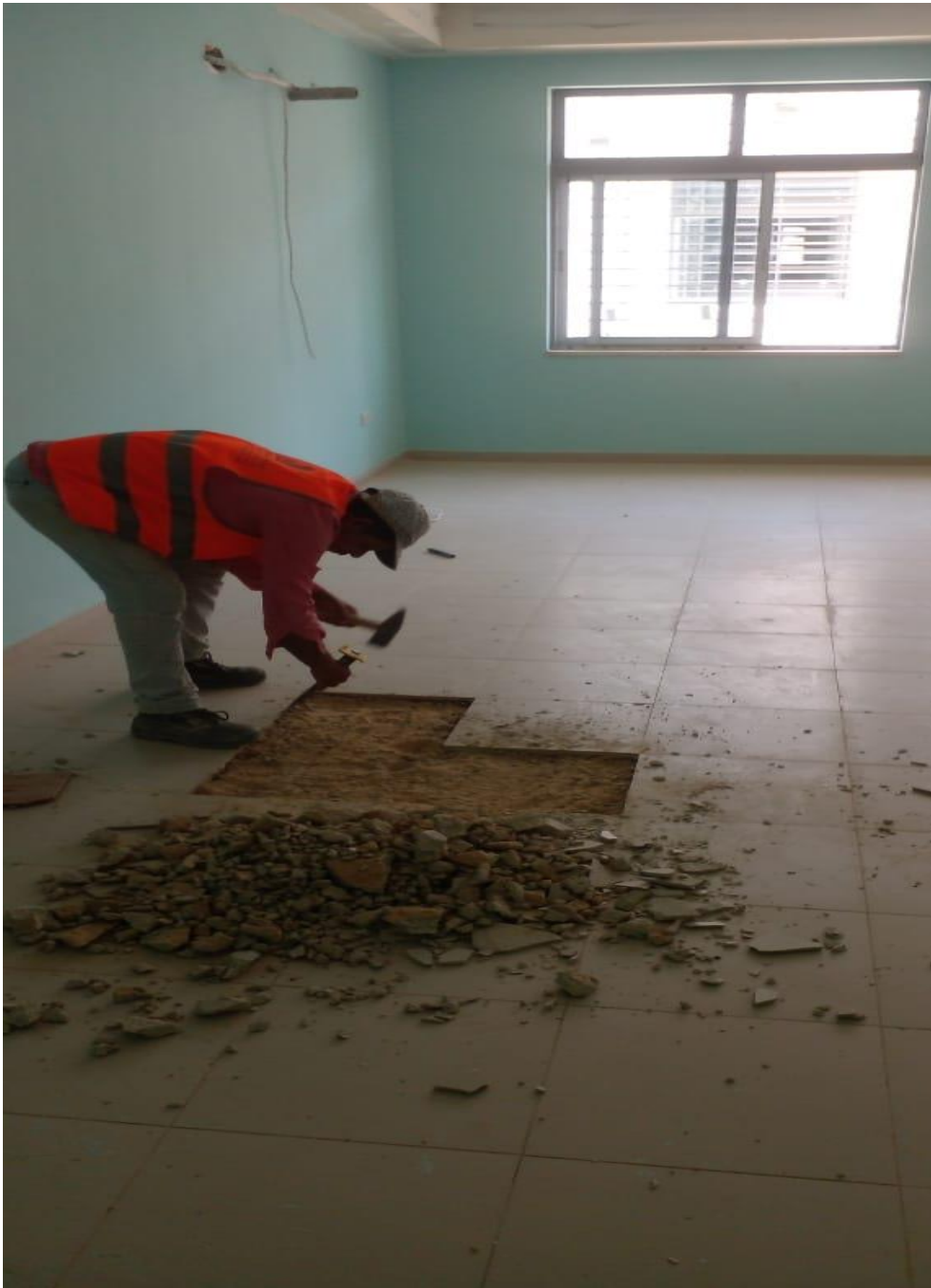
Consultant Site Engineer

Signature

Contractor Site Engineer

Signature

Quality Control Report



Removing of defected porcelain tiles

Consultant Site Engineer

Signature

Contractor Site Engineer

Signature

Quality Control Report



Rectification of steel protection screens

Consultant Site Engineer

Signature

Contractor Site Engineer

Signature