



# School for Knowledge Economy Project (SKEP) Phase III – Package 1

## Monthly Progress Report

No. 23

October, 2022



**WAHIB  
MEDANAT**  
consultant engineers

☎ +962 6 5821206

+962 6 5817847

+962 79 7650576

✉ +962 6 5862357

✉ mail@medanat.com

info@medanat.com

www www.medanat.com

**TÜV**  
AUSTRIA  
HELLAS

No.: 20001210004621

Management System as per  
EN ISO 9001 : 2015

**TÜV**  
AUSTRIA  
HELLAS

No.: 20152200003939

Management System as per  
ISO 45001 : 2018

## | Table of Contents

	Page
<b>  Table of Contents</b>	<b>2</b>
<b>1   Project Particulars</b>	<b>5</b>
1.1 Contract Main Information	5
<b>1.2 Executive Summary</b>	<b>7</b>
A- Um-Aldananir Basic Mixed School	7
B- Al Khansa' Basic Mixed School	8
C- Khadija Bint Khwailed Basic Mixed School	9
<b>2   Consultant Organisation Project Staff</b>	<b>10</b>
<b>3   Summary of Activities</b>	<b>13</b>
3.1 Um-Al Dananir Basic Mixed School	13
3.2 Al Khansa' Basic Mixed School	13
3.3 Khadija Bint Khwailed Basic Mixed School	13
3.4 Mobilization Tracking Log	13
3.5 Log of Activities	13
<b>4   Project Time and Duration</b>	<b>14</b>
<b>5   Project Contract &amp; V.O's</b>	<b>16</b>
<b>6   Cash Flow</b>	<b>17</b>
<b>7   Progress</b>	<b>19</b>
7.1 Average Progress	19
7.2 Um Al Dananir Basic Mixed School - Balqa	25
7.3 Al Khansa'a Basic Mixed School - Balqa	31
7.4 Khadija Bint Khwailed Basic Mixed School- Balqa	37
7.5 Engineer comments on work progress	43
7.6 Tracking Tasks in CPM	45
<b>8   Submitted Materials</b>	<b>46</b>
8.1 Summary of Submitted Materials	46
8.2 Shop Drawings & Submittal Tracking LOG	47
8.3 Materials Submittal Vendor List	47
<b>9   Correspondence Tracking Logs</b>	<b>48</b>

<b>10   Non-conformance Report Tracking Log</b>	<b>48</b>
10.1 HSE	48
10.2 QCs	48
Um-Al Dananir Basic Mixed School-Balqa	48
Al Khansa' Basic Mixed School- Balqa	50
Khadija Bint Khwailed Basic Mixed School- Al Shouna Al Janoubia	51
10.3 NCRs	53
<b>11   Request For Information Tracking Logs</b>	<b>53</b>
11.1 RFIs-Designer	53
11.2 RFIs-Contractor	53
<b>12   Site problems and Solutions</b>	<b>53</b>
<b>13   Meetings and Site Visits</b>	<b>54</b>
13.1 Coordination & Progress Meetings	54
13.2 Site Visits	55
13.3 Regular Monthly Site Visits (Home Office Support)	56
<b>14   Manpower Logs</b>	<b>70</b>
14.1 Um-Al Dananir Basic Mixed School- Balqa	70
14.2 Al Khansa' Basic Mixed School- Balqa	70
14.3 Khadija Bint Khwailed Basic Mixed School- Balqa	70
<b>15   Daily Plant and Equipment</b>	<b>70</b>
15.1 Um-Al Dananir Basic Mixed School- Balqa	70
15.2 Al Khansa' Basic Mixed School- Balqa	70
15.3 Khadija Bint Khwailed Basic Mixed School- Balqa	70
<b>16   Lab-test Results Tracking Log</b>	<b>71</b>
16.1 Um-Al Dananir Basic Mixed School- Balqa	71
16.2 Al Khansa' Basic Mixed School- Balqa	71
16.3 Khadija Bint Khwailed Basic Mixed School- Balqa	71
16.4 Comments on Laboratory Testing	71
<b>17   Obstacles Log (Site Obstacles)</b>	<b>71</b>
17.1 Um Al Dananir Basic Mixed School – Al Balqa	72
17.2 Khadija Bint Khwailed Basic Mixed School- Balqa	76
<b>18   Weather Condition</b>	<b>77</b>

18.1	Um-Al Dananir Basic Mixed School- Balqa	77
18.2	Al Khansa' Basic Mixed School- Balqa	77
18.3	Khadija Bint Khwailed Basic Mixed School- Balqa	77
<b>19</b>	<b>  Selected Photos</b>	<b>78</b>
19.1	Um-Aldananir Basic Mixed School- Al Balqa	78
19.2	Al Khansa Basic Mixed School- Al Balqa	80
19.3	Khadija Bint Khwailed Basic Mixed School – Al-Shouna Al-Janobia	82
20.1	Um Al Dananir Basic Mixed School -Balqa	84
20.2	Al Khansa'a Basic Mixed School - Balqa	84
20.3	Khadija Bint Khwailed Basic Mixed School - Balqa	84
<b>21</b>	<b>  Website Reports Links</b>	<b>84</b>
21.1	Daily Reports Updated daily	84
21.2	Weekly Reports Updated weekly	84
21.3	Monthly Reports Updated monthly	84
21.4	CMTO Inspection Reports Updated weekly	84
21.5	Quality Reports Updated weekly	84
<b>22</b>	<b>  Training</b>	<b>85</b>
22.1	Training:	85
21.2	Training Sessions:	86



# 1 | Project Particulars

## 1.1 Contract Main Information

Contract Name:	School for Knowledge Economy Project (SKEP) Phase III – Package (1)
Owner:	Ministry of Education (MOE)
Funded By:	United States Agency for International Development (USAID)
Consultant:	Wahib Medanat Consultant Engineers
Project Management:	Trigon Associates
Contractor:	Derar Saraireh & Sons for Engineering & Contracting
Contract No.:	1/2020/USAID/SKEP/3/1
Commencement Date:	19/12/2020
Time for Substantial Completion of the Work:	Um-Aldananir Basic Mixed School - Al-Balqa: 450 Days
	Al Khansa' Basic Mixed School Al-Balqa: 450 Days
	Khadija Bint Khwailed Basic Mixed School - Al-Shouna Al-Janobia: 450 Days
Time to Complete the Work Including Punch List Items:	Within 14 Calendar days for each School from the date of taking over committee inspection
Contract Amount at Award:	9,789,417.840 JOD
Amount of Liquidated Damages:	Um-Aldananir Basic Mixed School- Al-Balqa: 2000 JOD/ Day but not to exceed 15% of total amount for the School

	Al Khansa' Basic Mixed School Al-Balqa: 2000 JOD/ Day but not to exceed 15% of the total amount for the School
	Khadija Bint Khwailed Basic Mixed School - Al-Shouna Al-Janobia: 2000 JOD/ Day but not to exceed 15% of total amount for the School
Defects Liability Period:	(730) Calendar Days for all Civil & Electromechanical works from the date of Substantial Completion for each school including the maintenance of plantation works
Maintenance Guarantee for Defects Liability Period:	5% of the final Contract Sum
Percentage of Retention from Interim Payment Certificate:	10% of each payment
Limit of Retention Money:	5% of Contract Sum as amended
Period of Time for Payment to be made after Certification by the Engineer:	60 Calendar Days
Minimum Amount of Interim Payment Certificate:	JOD 300,000 (Three hundred thousand Jordanian Dinar) for all schools under the Package
Payment for Imported Materials	40% upon receipt of approved bill of lading and another 20% when stored on site to the Engineer's approval
Payment for Local Materials and Equipment	60% and restricted to cement and reinforcing steel when stored on site to the Engineer's approval.

## 1.2 Executive Summary

The Ministry of Education represented by the Ministry of Public Works & Housing has received a grant from USAID to finance the construction of:

School for Knowledge Economy Project (SKEP) – Phase III – Package (1)

The package consists of construction of three (3) Schools at different locations in Al-Balqa.

The project consists of construction of new classrooms, computer labs, laboratories, public utilities...etc., and site works for group of schools as shown in the Tender Documents, the Schools are:

### A- Um-Aldananir Basic Mixed School

The project consists of a school building of five floors with a total approximate built-up area of 6258 m<sup>2</sup>, in addition guard house, rainwater harvesting tank and other site works as deemed in the drawings and BOQ.

#### Main Elements

Land Area =11709 m <sup>2</sup>			External Works = 5665 m <sup>2</sup>					no. of floors = 5		
Floor	F.F.L	Area (m <sup>2</sup> )	No.of classroom grade (1-3)	No.of classroom grade (4-10)	No . Of KG classroom	Student for each classroom	Student in floor	General Toilets	Mens Toilets	Womens Toilets
<b>Basement</b>	96.9/97.5	1070	-	-	-	-	-	HC TOILET	1	1
<b>Ground</b>	102	1669	-	-	4	24	96	2 KG toilets child care toilet	-	-
<b>First</b>	105.64	1664	12	4	-	36	576	H.c TOILETS	2	2
<b>Second</b>	109.28	1664	-	12	-	36	432	H.C TOILET	-	2
<b>Roof</b>	112.92	90	-	-	-	-	-	-	-	-
<b>External Works</b>	-	5451	-	-	-	-	-	-	-	-
<b>Total</b>		<b>11608</b>		<b>32</b>		<b>-</b>	<b>1104</b>	<b>-</b>	<b>3</b>	<b>5</b>

❑ Location Link:

[Um Al Dananir Basic Mixed-Balqa](#)

❑ More Information Link

<https://www.medanat.site/s3p1s1-01>

## B- Al Khansa' Basic Mixed School

The project consists of a school building of five floors with a total approximate built-up area of 6432 m<sup>2</sup>, in addition guard house, sewage collection tank, water tank and other site works as deemed in the drawings and BOQ.

### Main Elements

Land Area =9226 m2			External Works = 3802 m2					no. of floor = 5		
Floor	F.F.L	Area (m2)	No.of classroom grade (1-3)	No.of classroom grade (4-10)	No . Of KG classroom	Student for each classroom	Student in floor	General Toilets	Mens Toilets	Womens Toilets
<b>Ground</b>	89.55	1619.11	-	-	4	24	96	General 1 HC toilet and 2*2 KG Toilets with 2 KG HC Toilets	1*2	1*2
<b>First</b>	93.45	1693.35	9	-	-	36	324	1 HC Toilet	1*4	1*6
<b>Second</b>	97.35	1508.29	-	8	-	36	288	1*9 with 1 HC toilets	-	-
<b>Third</b>	101.25	1511.24	-	6	-	36	216	1*7 with 1 HC toilets	-	-
<b>Roof</b>	105.15	99.12	-	-	-	-	-	-	-	-
<b>External Works</b>	---	3802	-	-	-	-	-	-	-	-
<b>Total</b>		<b>10233.11</b>		<b>27</b>		<b>-</b>	<b>924</b>	<b>-</b>	<b>6</b>	<b>8</b>

❑ Location Link:

[Al Khansa'a Basic Mixed - Balqa](#)

❑ More Information Link

<https://www.medanat.site/s3p1s2-01>

## C- Khadija Bint Khwailed Basic Mixed School

The project consists of a school building of four floors with a total approximate built-up area of 5341.18 m<sup>2</sup>, in addition guard house, sewage collection tank, water tank and other site works as deemed in the drawings and BOQ.

### Main Elements

Land Area =17320 m2			External Works = 7013.5 m2					no. of floor = 4		
Floor	F.F.L	Area (m2)	No.of classroom grade (1-3)	No.of classroom grade (4-10)	No . Of KG classroom	Student for each classroom	Student in floor	General Toilets	Mens Toilets	Womens Toilets
Ground	101	2273.07	-	-	4	24	96	General 1 HC toilet and 2*2 KG Toilets with 2 KG HC Toilets	1*2	1*2
First	104.64	1816.25	9	6	-	36	540	1 HC Toilet	1*4	1*6
Second	108.28	1160.75	-	8	-	36	288	1*9 with 1 HC toilets	-	-
Roof	111.77	91.11	-	-	-	-	-	-	-	-
External Works	-	-	-	-	-	-	-	-	-	-
Total		5341.18	27			-	924	-	6	8

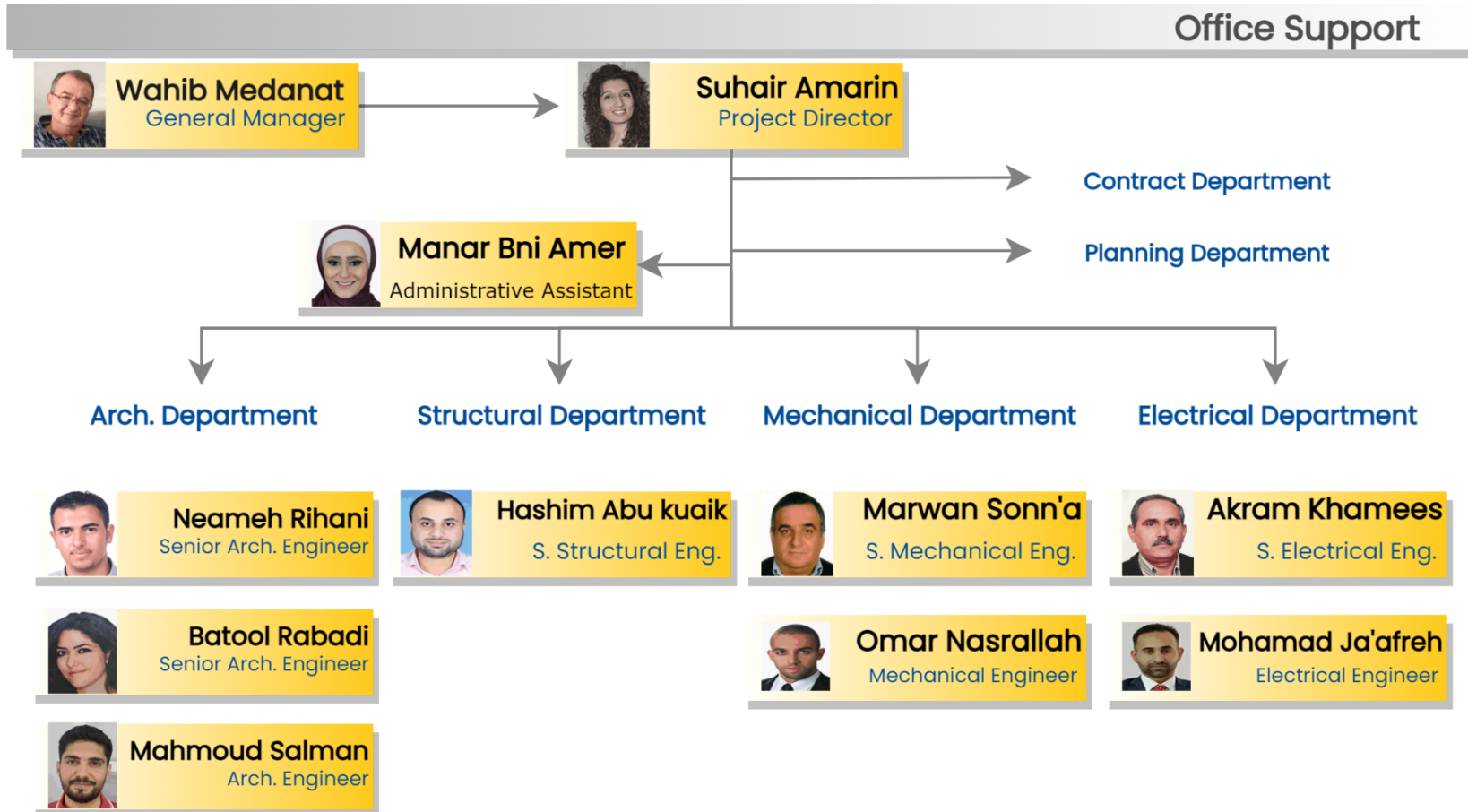
❑ Location Link:

[Khadija Bint Khwailed Basic Mixed - Balqa](#)

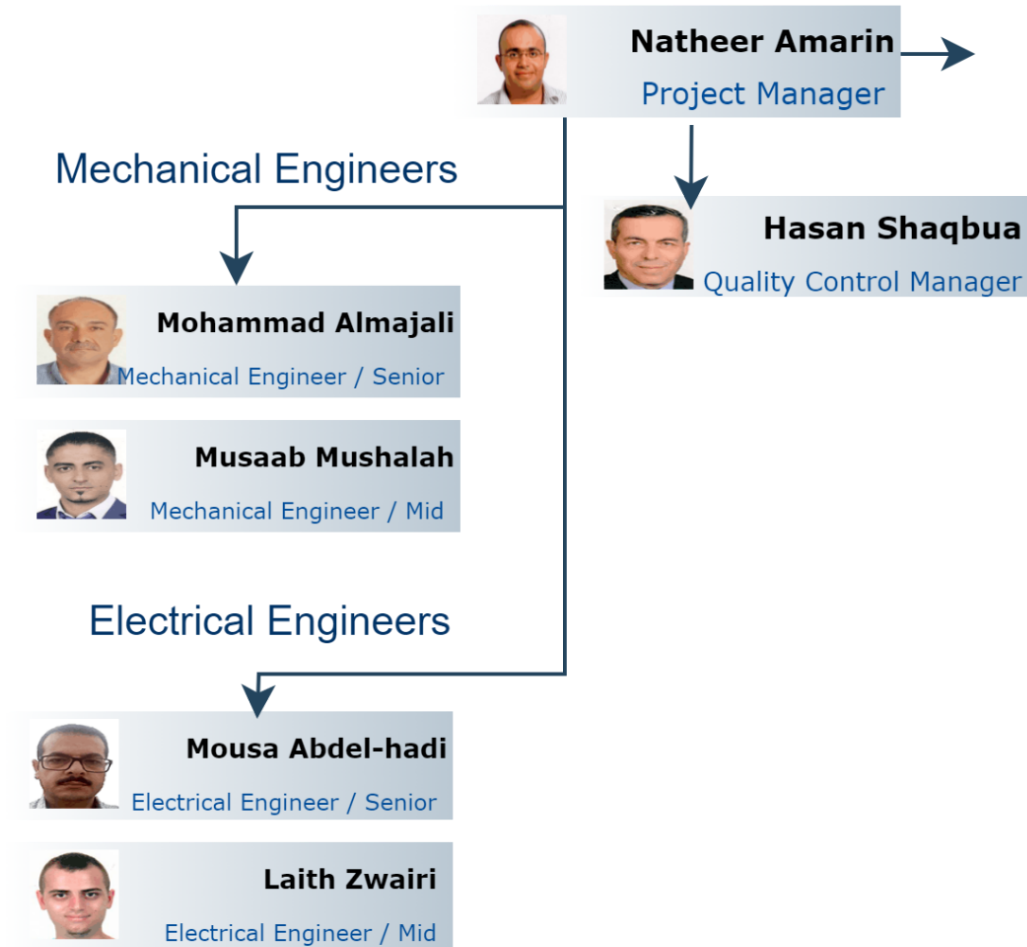
❑ More Information Link

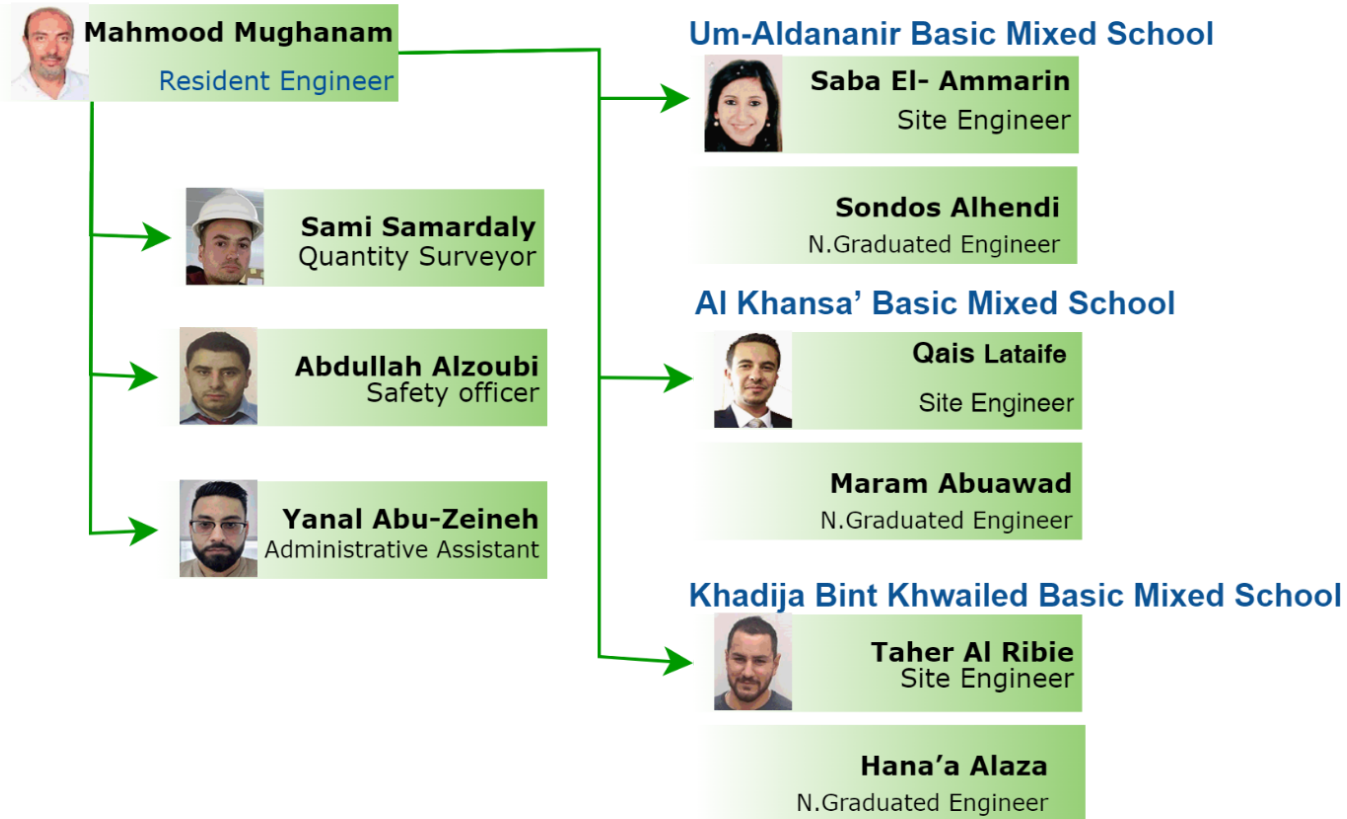
<https://www.medanat.site/s3p1s3-01>

## 2 | Consultant Organisation Project Staff



Package 1,2





website Link: <https://www.medanat.site/skepiii-sta>



### 3 | Summary of Activities

#### 3.1 Um–Al Dananir Basic Mixed School

- Summary of Activities Link:
- [https://docs.google.com/spreadsheets/d/e/2PACX-1vQtXe1MHKn2AfvCPyo3P\\_od3Qrzo8PnZhLLI60cHnNUMWKI9JNDIRTMwFJv6opbwKB68PMPvooggH53/pubhtml?gid=0&single=true](https://docs.google.com/spreadsheets/d/e/2PACX-1vQtXe1MHKn2AfvCPyo3P_od3Qrzo8PnZhLLI60cHnNUMWKI9JNDIRTMwFJv6opbwKB68PMPvooggH53/pubhtml?gid=0&single=true)

#### 3.2 Al Khansa' Basic Mixed School

- Summary of Activities Link:
- [https://docs.google.com/spreadsheets/d/e/2PACX-1vQtXe1MHKn2AfvCPyo3P\\_od3Qrzo8PnZhLLI60cHnNUMWKI9JNDIRTMwFJv6opbwKB68PMPvooggH53/pubhtml?gid=834925315&single=true](https://docs.google.com/spreadsheets/d/e/2PACX-1vQtXe1MHKn2AfvCPyo3P_od3Qrzo8PnZhLLI60cHnNUMWKI9JNDIRTMwFJv6opbwKB68PMPvooggH53/pubhtml?gid=834925315&single=true)

#### 3.3 Khadija Bint Khwailed Basic Mixed School

- Summary of Activities Link:
- [https://docs.google.com/spreadsheets/d/e/2PACX-1vQtXe1MHKn2AfvCPyo3P\\_od3Qrzo8PnZhLLI60cHnNUMWKI9JNDIRTMwFJv6opbwKB68PMPvooggH53/pubhtml?gid=234544642&single=true](https://docs.google.com/spreadsheets/d/e/2PACX-1vQtXe1MHKn2AfvCPyo3P_od3Qrzo8PnZhLLI60cHnNUMWKI9JNDIRTMwFJv6opbwKB68PMPvooggH53/pubhtml?gid=234544642&single=true)

#### 3.4 Mobilization Tracking Log

- <https://docs.google.com/spreadsheets/d/e/2PACX-1vTb23TdHhXfLOUoHMxnWZJ1CfD1Nju8buE11-ectEZcCVPKHcn3VdzEx4XiFAJLcwJcqtOgcayHW487/pubhtml?gid=0&single=true>

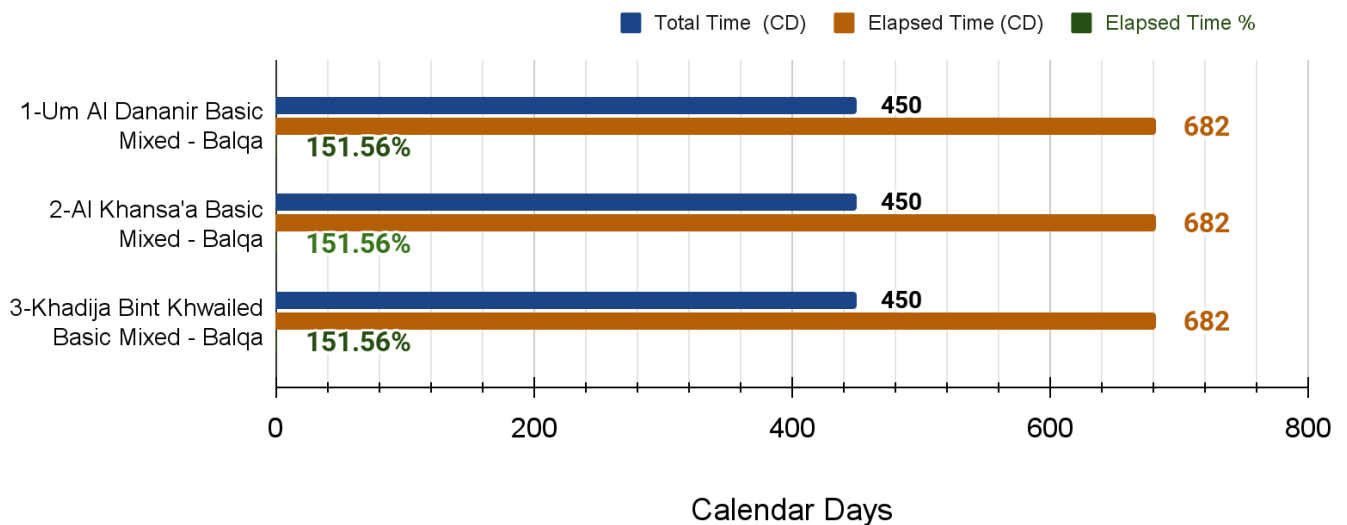
#### 3.5 Log of Activities

- [https://docs.google.com/spreadsheets/d/e/2PACX-1vRljrdIHBPBQG24TpGSwPcwFV\\_eXNirKzcTrMFJq7x\\_K4XZHuw1VudcEo-jVCkTz7DGE0TK9IG9PJ3w2/pubhtml?gid=0&single=true](https://docs.google.com/spreadsheets/d/e/2PACX-1vRljrdIHBPBQG24TpGSwPcwFV_eXNirKzcTrMFJq7x_K4XZHuw1VudcEo-jVCkTz7DGE0TK9IG9PJ3w2/pubhtml?gid=0&single=true)

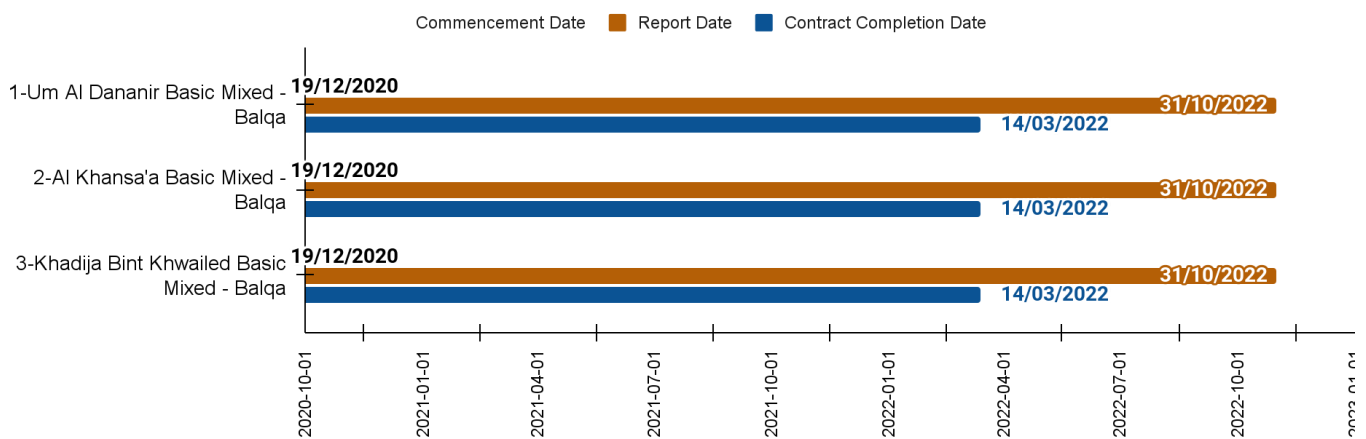
## 4 | Project Time and Duration

PGK 1 Report Date	2022-10-31				
Site Name	Contract Duration (CD)	Time Extension (CD)	Total Time (CD)	Elapsed Time (CD)	Elapsed Time %
1-Um Al Dananir Basic Mixed - Balqa	450	0	450	682	151.56%
2-Al Khansa'a Basic Mixed - Balqa	450	0	450	682	151.56%
3-Khadija Bint Khwailed Basic Mixed - Balqa	450	0	450	682	151.56%

SKEP III PKG 1 Time Chart



Site Name	Commencement Date	Report Date	Contract Completion Date
1-Um Al Dananir Basic Mixed - Balqa	2020-12-19	2022-10-31	2022-03-14
2-Al Khansa'a Basic Mixed - Balqa	2020-12-19	2022-10-31	2022-03-14
3-Khadija Bint Khwailed Basic Mixed - Balqa	2020-12-19	2022-10-31	2022-03-14



## 5 | Project Contract & V.O's

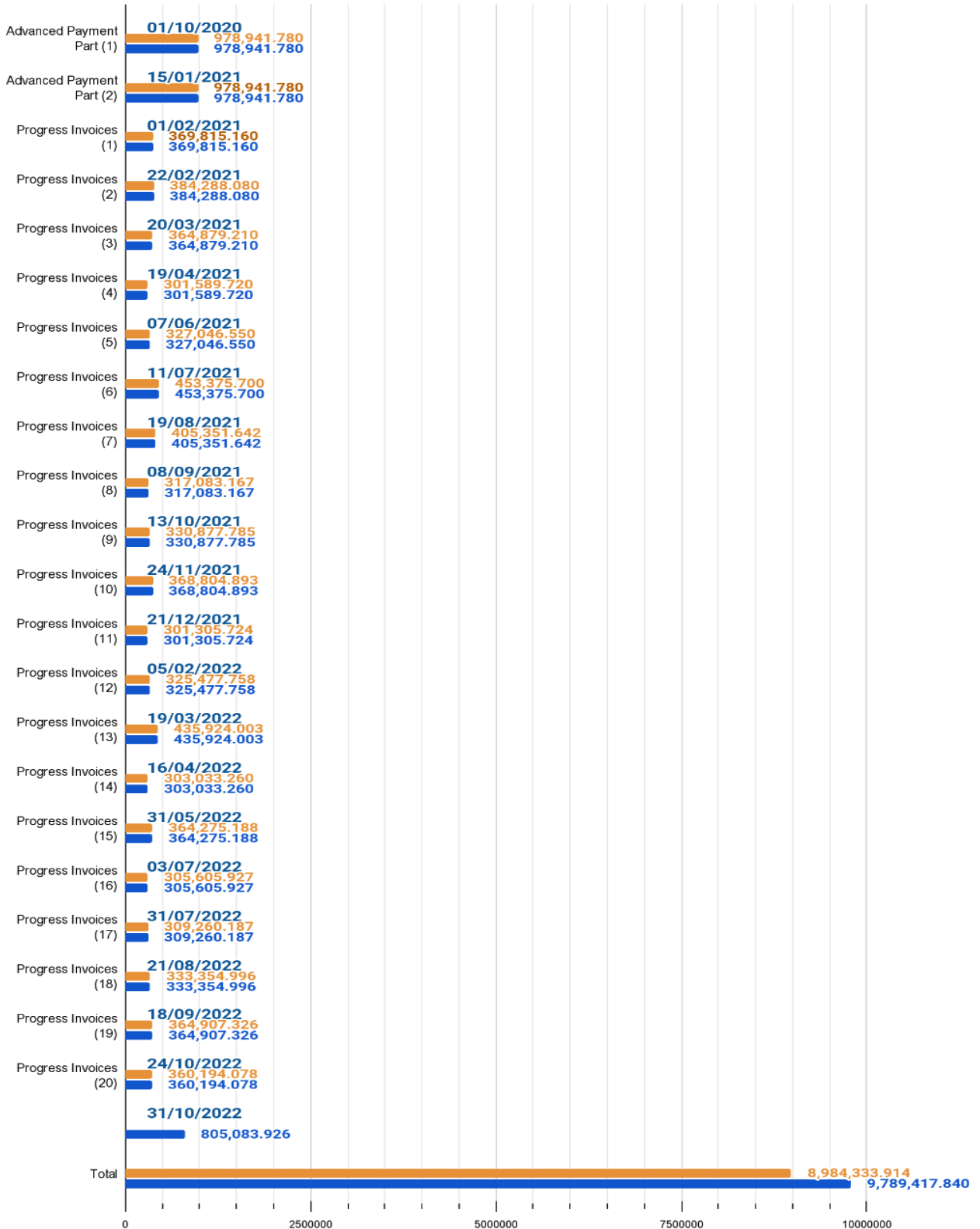
Package 1 Contract & V.O's							
School Name	Contract Value JD		Provisional Sums JD		General Requirements JD		V.O.
	Original	After 6 % Deduction	Geotechnical Tests	Conveying System	Value	After 6% Deduction	V.O Description
Khadija Bint Khwailed Basic Mixed School	3,001,919.70	2,821,804.52	11,000.00	25,000.00	53,206.74	50,014.34	Additional quantities for boundary wall Cable tray item rate change
Um Al Dananir Basic Mixed School	3,260,798.90	3,065,150.97	11,000.00	25,000.00	66,614.69	62,617.81	Cable tray item rate change
Al Khansa' Basic Mixed School-Al Balqa	3,758,331.10	3,532,831.23	11,000.00	25,000.00	52,126.79	48,999.18	Cable tray item rate change
<b>Total</b>	<b>10,021,049.70</b>	<b>9,419,786.72</b>	<b>108,000.00</b>		<b>171,948.22</b>	<b>161,631.33</b>	

## 6 | Cash Flow

### Package 1 Cash Flow

Payment	Date of Payment	Actual Amount (JD)	Scheduled (JD)
Advanced Payment Part (1)	01/10/2020	978,941.780	978,941.780
Advanced Payment Part (2)	15/01/2021	978,941.780	978,941.780
Progress Invoices (1)	01/02/2021	369,815.160	369,815.160
Progress Invoices (2)	22/02/2021	384,288.080	384,288.080
Progress Invoices (3)	20/03/2021	364,879.210	364,879.210
Progress Invoices (4)	19/04/2021	301,589.720	301,589.720
Progress Invoices (5)	07/06/2021	327,046.550	327,046.550
Progress Invoices (6)	11/07/2021	453,375.700	453,375.700
Progress Invoices (7)	19/08/2021	405,351.642	405,351.642
Progress Invoices (8)	08/09/2021	317,083.167	317,083.167
Progress Invoices (9)	13/10/2021	330,877.785	330,877.785
Progress Invoices (10)	24/11/2021	368,804.893	368,804.893
Progress Invoices (11)	21/12/2021	301,305.724	301,305.724
Progress Invoices (12)	05/02/2022	325,477.758	325,477.758
Progress Invoices (13)	19/03/2022	435,924.003	435,924.003
Progress Invoices (14)	16/04/2022	303,033.260	303,033.260
Progress Invoices (15)	31/05/2022	364,275.188	364,275.188
Progress Invoices (16)	03/07/2022	305,605.927	305,605.927
Progress Invoices (17)	31/07/2022	309,260.187	309,260.187
Progress Invoices (18)	21/08/2022	333,354.996	333,354.996
Progress Invoices (19)	18/09/2022	364,907.326	364,907.326
Progress Invoices (20)	24/10/2022	360,194.078	360,194.078
			805,083.926
<b>Total</b>		<b>8,984,333.914</b>	<b>9,789,417.840</b>

Package 1- Cash Flow



Date of Payment    Actual Amount (JD)    Scheduled (JD)

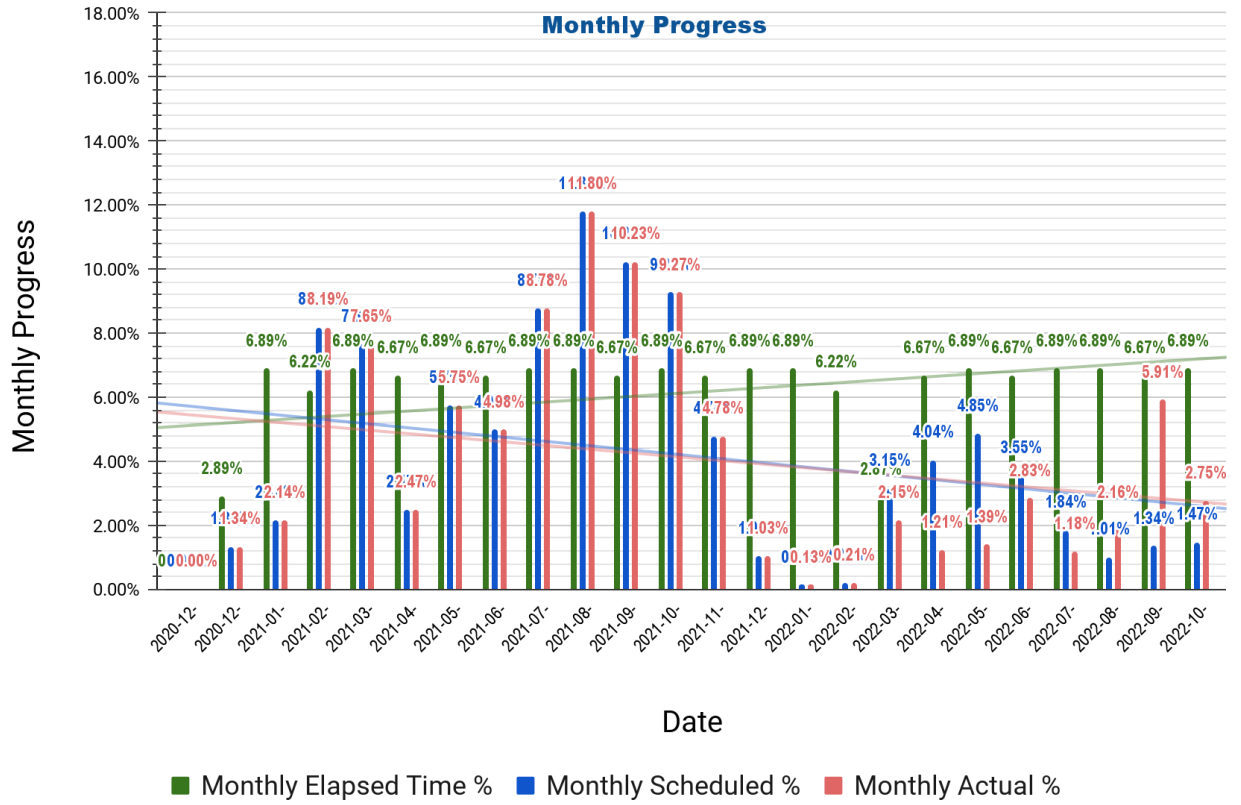
## 7 | Progress

### 7.1 Average Progress

Package 1 Monthly Progress

Date	Monthly Elapsed Time %	Monthly Scheduled %	Monthly Actual %
2020-12-19	0.00%	0.00%	0.00%
2020-12-31	2.89%	1.34%	1.34%
2021-01-31	6.89%	2.14%	2.14%
2021-02-28	6.22%	8.19%	8.19%
2021-03-31	6.89%	7.65%	7.65%
2021-04-30	6.67%	2.47%	2.47%
2021-05-31	6.89%	5.75%	5.75%
2021-06-30	6.67%	4.98%	4.98%
2021-07-31	6.89%	8.78%	8.78%
2021-08-31	6.89%	11.80%	11.80%
2021-09-30	6.67%	10.23%	10.23%
2021-10-31	6.89%	9.27%	9.27%
2021-11-30	6.67%	4.78%	4.78%
2021-12-31	6.89%	1.03%	1.03%
2022-01-31	6.89%	0.13%	0.13%
2022-02-28	6.22%	0.21%	0.21%
2022-03-31	2.87%	3.15%	2.15%
2022-04-30	6.67%	4.04%	1.21%
2022-05-31	6.89%	4.85%	1.39%
2022-06-30	6.67%	3.55%	2.83%
2022-07-31	6.89%	1.84%	1.18%
2022-08-31	6.89%	1.01%	2.16%
2022-09-30	6.67%	1.34%	5.91%
2022-10-31	6.89%	1.47%	2.75%
<b>Total</b>	<b>147.57%</b>	<b>100.00%</b>	<b>98.33%</b>

**Package 1**

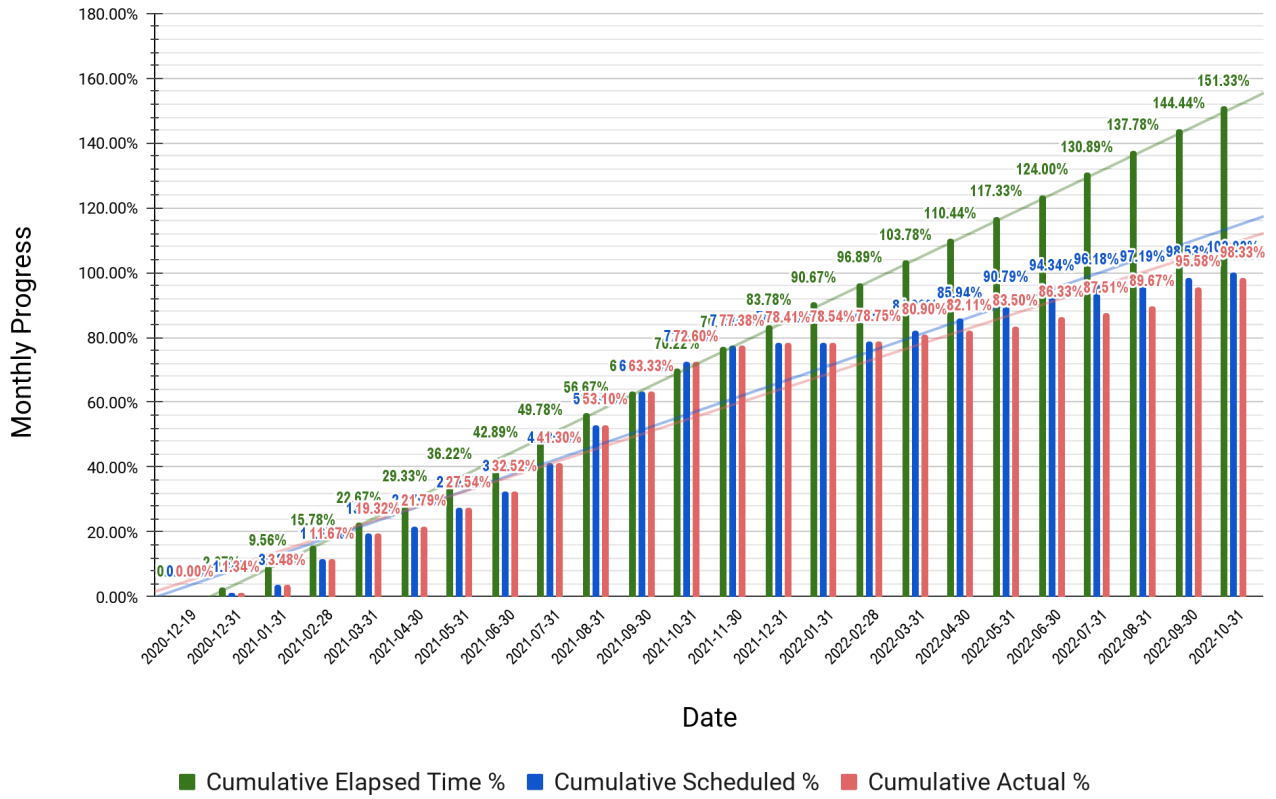




Package 1 Cumulative Progress			
Date	Cumulative Elapsed Time %	Cumulative Scheduled %	Cumulative Actual %
2020-12-19	0.00%	0.00%	0.00%
2020-12-31	2.67%	1.34%	1.34%
2021-01-31	9.56%	3.48%	3.48%
2021-02-28	15.78%	11.67%	11.67%
2021-03-31	22.67%	19.32%	19.32%
2021-04-30	29.33%	21.79%	21.79%
2021-05-31	36.22%	27.54%	27.54%
2021-06-30	42.89%	32.52%	32.52%
2021-07-31	49.78%	41.30%	41.30%
2021-08-31	56.67%	53.10%	53.10%
2021-09-30	63.33%	63.33%	63.33%
2021-10-31	70.22%	72.60%	72.60%
2021-11-30	76.89%	77.38%	77.38%
2021-12-31	83.78%	78.41%	78.41%
2022-01-31	90.67%	78.54%	78.54%
2022-02-28	96.89%	78.75%	78.75%
2022-03-31	103.78%	81.90%	80.90%
2022-04-30	110.44%	85.94%	82.11%
2022-05-31	117.33%	90.79%	83.50%
2022-06-30	124.00%	94.34%	86.33%
2022-07-31	130.89%	96.18%	87.51%
2022-08-31	137.78%	97.19%	89.67%
2022-09-30	144.44%	98.53%	95.58%
2022-10-31	151.33%	100.00%	98.33%

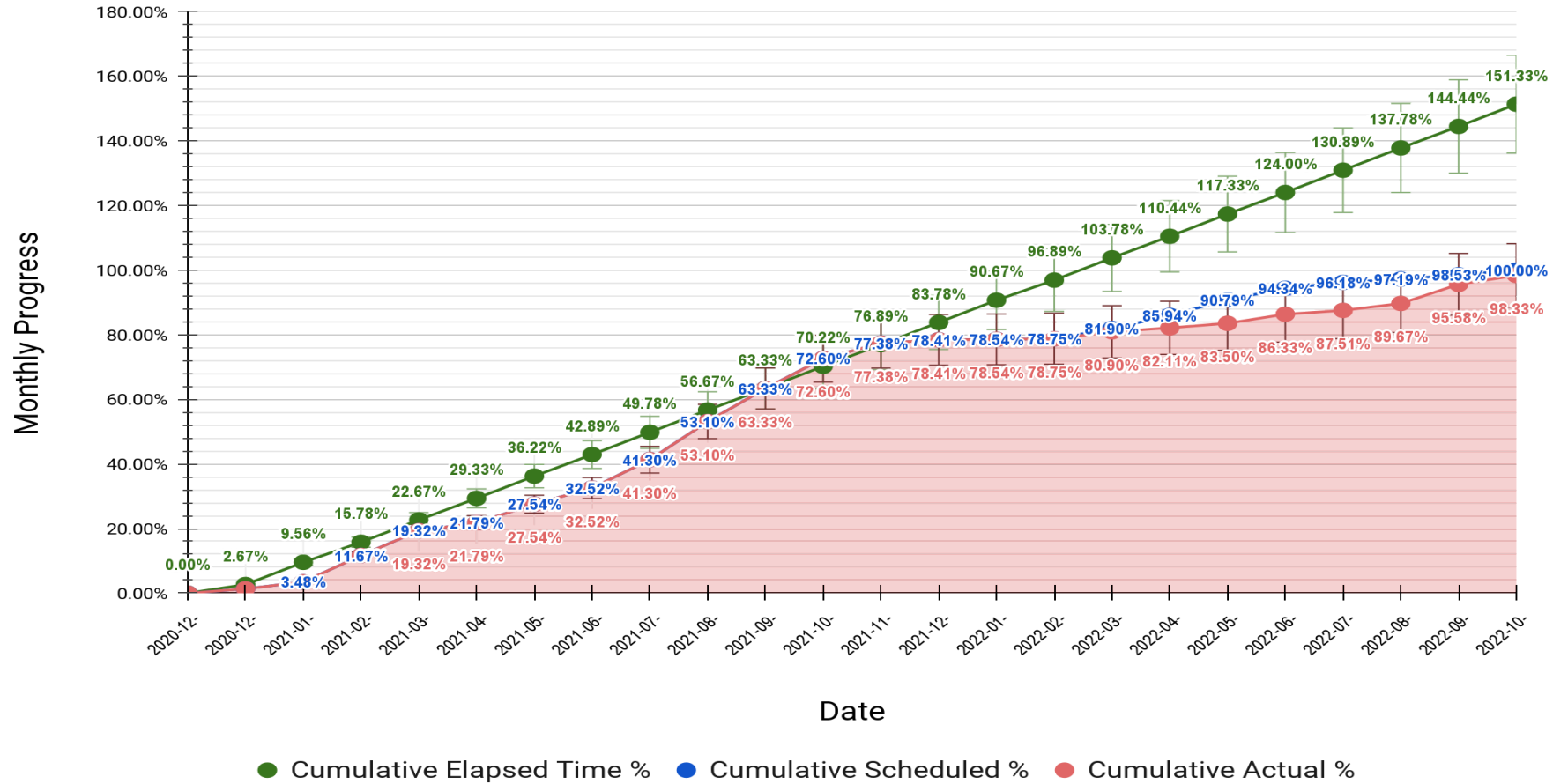
## Package 1

### Cumulative Progress



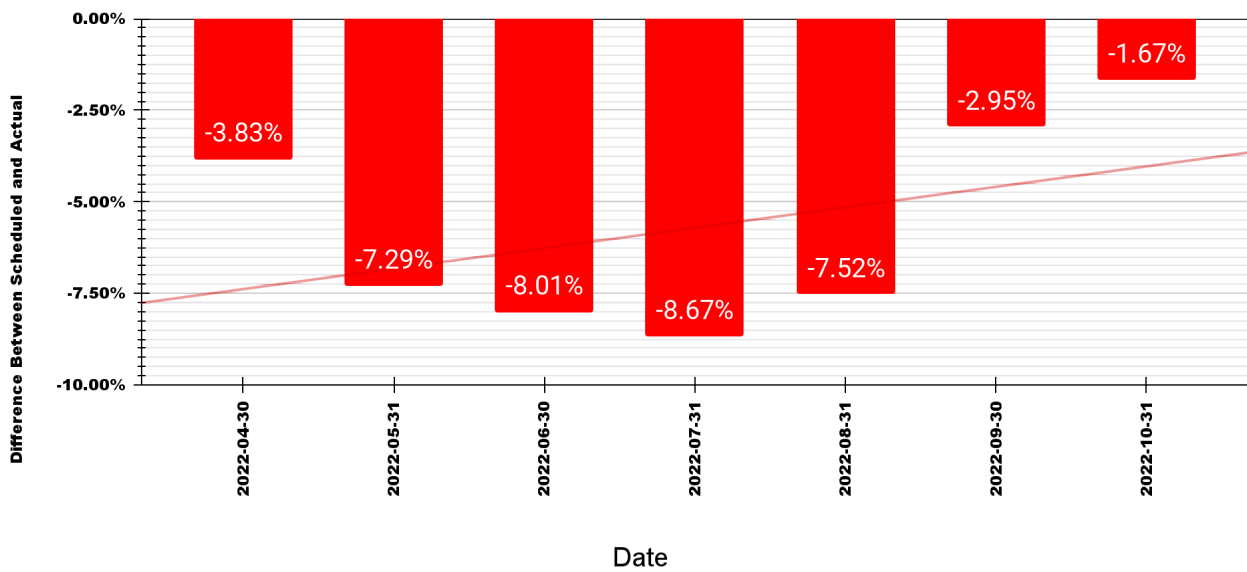
### Package 1 Average For Three Sites

#### Cumulative Progress



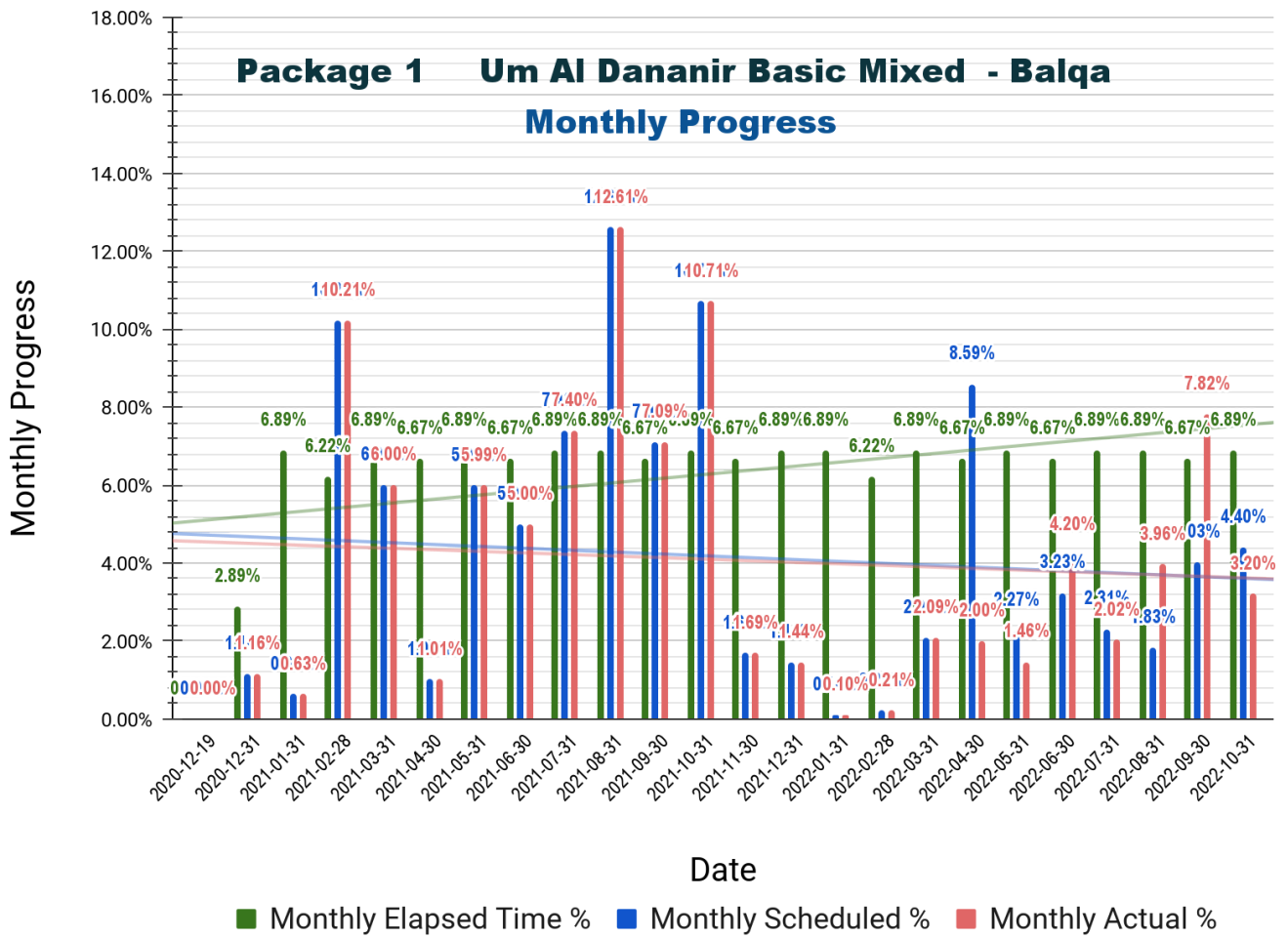
Date	Difference Between Scheduled and Actual
2022-04-30	<b>-3.83%</b>
2022-05-31	<b>-7.29%</b>
2022-06-30	<b>-8.01%</b>
2022-07-31	<b>-8.67%</b>
2022-08-31	<b>-7.52%</b>
2022-09-30	<b>-2.95%</b>
2022-10-31	<b>-1.67%</b>

**PKG 1 Difference: Scheduled Vs. Actual      Average For Three Sites**



## 7.2 Um Al Dananir Basic Mixed School – Balqa

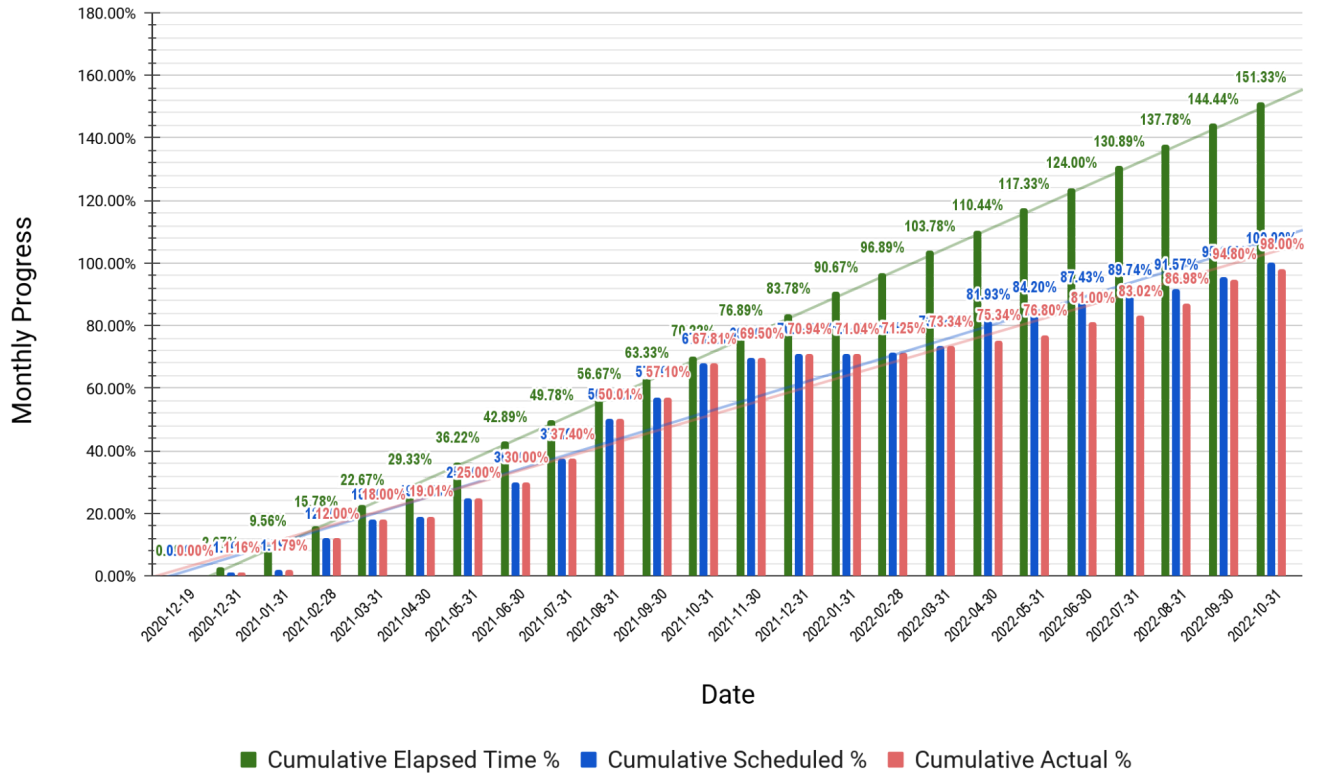
Package 1 Um Al Dananir Basic Mixed - Balqa			
Date	Monthly Elapsed Time %	Monthly Scheduled %	Monthly Actual %
2020-12-19	0.00%	0.00%	0.00%
2020-12-31	2.89%	1.16%	1.16%
2021-01-31	6.89%	0.63%	0.63%
2021-02-28	6.22%	10.21%	10.21%
2021-03-31	6.89%	6.00%	6.00%
2021-04-30	6.67%	1.01%	1.01%
2021-05-31	6.89%	5.99%	5.99%
2021-06-30	6.67%	5.00%	5.00%
2021-07-31	6.89%	7.40%	7.40%
2021-08-31	6.89%	12.61%	12.61%
2021-09-30	6.67%	7.09%	7.09%
2021-10-31	6.89%	10.71%	10.71%
2021-11-30	6.67%	1.69%	1.69%
2021-12-31	6.89%	1.44%	1.44%
2022-01-31	6.89%	0.10%	0.10%
2022-02-28	6.22%	0.21%	0.21%
2022-03-31	6.89%	2.09%	2.09%
2022-04-30	6.67%	8.59%	2.00%
2022-05-31	6.89%	2.27%	1.46%
2022-06-30	6.67%	3.23%	4.20%
2022-07-31	6.89%	2.31%	2.02%
2022-08-31	6.89%	1.83%	3.96%
2022-09-30	6.67%	4.03%	7.82%
2022-10-31	6.89%	4.40%	3.20%
<b>Total</b>	<b>151.59%</b>	<b>100.00%</b>	<b>98.00%</b>



Package 1 Um Al Dananir Basic Mixed – Balqa			
Date	Cumulative Elapsed Time %	Cumulative Scheduled %	Cumulative Actual %
2020-12-19	0.00%	0.00%	0.00%
2020-12-31	2.67%	1.16%	1.16%
2021-01-31	9.56%	1.79%	1.79%
2021-02-28	15.78%	12.00%	12.00%
2021-03-31	22.67%	18.00%	18.00%
2021-04-30	29.33%	19.01%	19.01%
2021-05-31	36.22%	25.00%	25.00%
2021-06-30	42.89%	30.00%	30.00%
2021-07-31	49.78%	37.40%	37.40%
2021-08-31	56.67%	50.01%	50.01%
2021-09-30	63.33%	57.10%	57.10%
2021-10-31	70.22%	67.81%	67.81%
2021-11-30	76.89%	69.50%	69.50%
2021-12-31	83.78%	70.94%	70.94%
2022-01-31	90.67%	71.04%	71.04%
2022-02-28	96.89%	71.25%	71.25%
2022-03-31	103.78%	73.34%	73.34%
2022-04-30	110.44%	81.93%	75.34%
2022-05-31	117.33%	84.20%	76.80%
2022-06-30	124.00%	87.43%	81.00%
2022-07-31	130.89%	89.74%	83.02%
2022-08-31	137.78%	91.57%	86.98%
2022-09-30	144.44%	95.60%	94.80%
2022-10-31	151.33%	100.00%	98.00%

## Package 1 Um Al Dananir Basic Mixed - Balqa

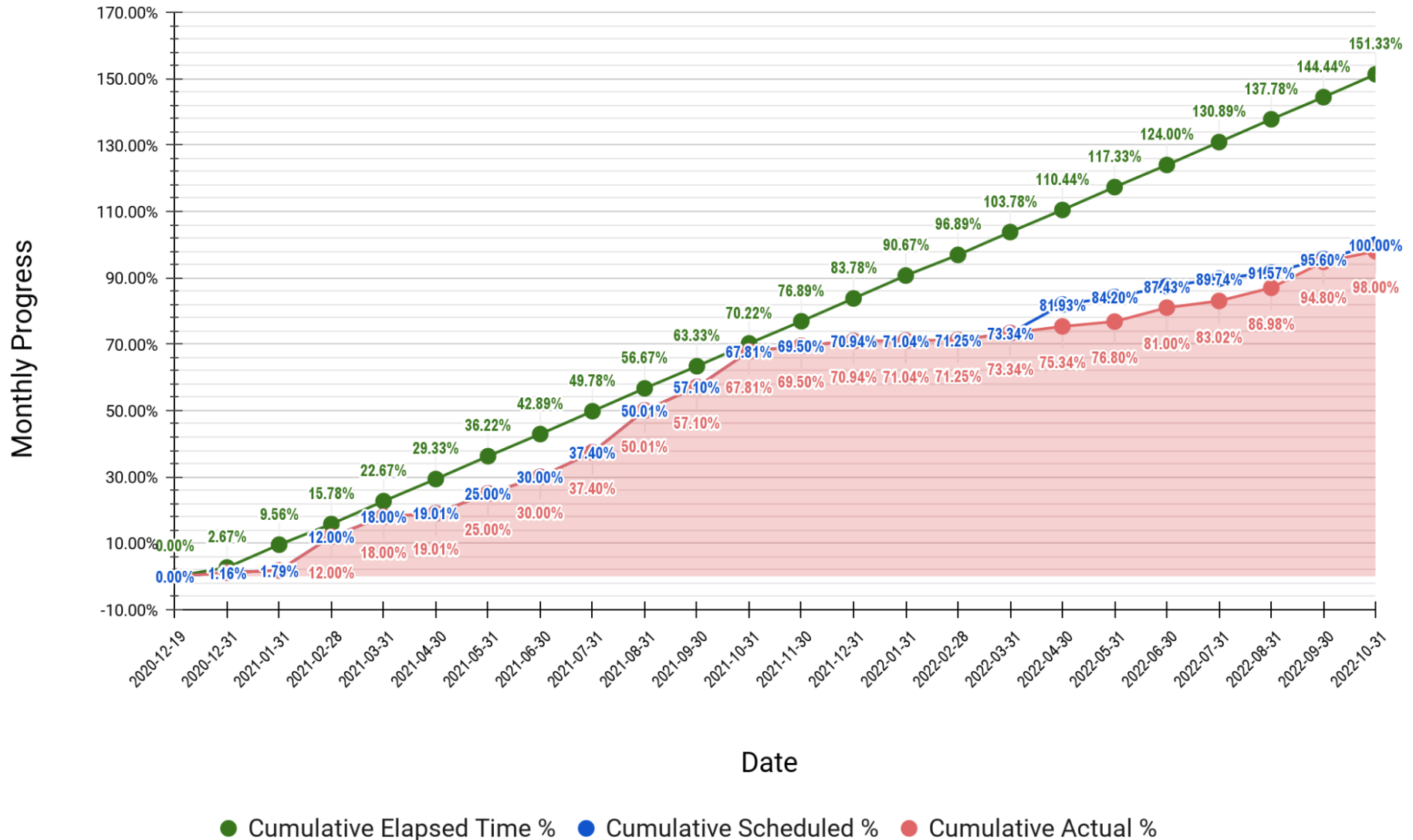
### Cumulative Progress





## Package 1 Um Al Dananir Basic Mixed - Balqa

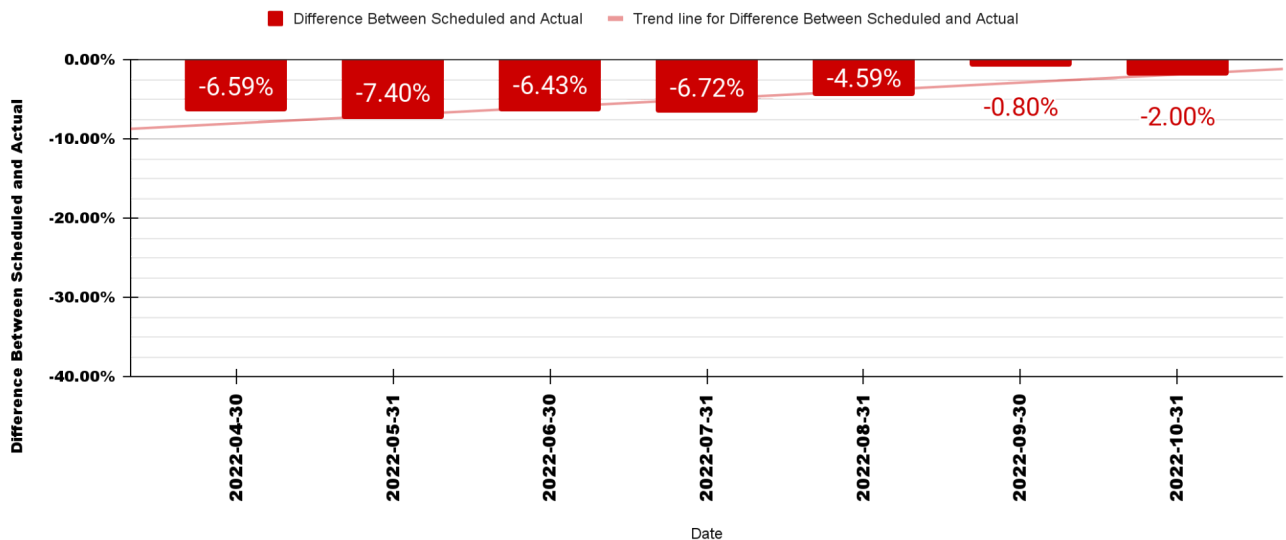
### Cumulative Progress



Date	Difference Between Scheduled and Actual
2022-04-30	-6.59%
2022-05-31	-7.40%
2022-06-30	-6.43%
2022-07-31	-6.72%
2022-08-31	-4.59%
2022-09-30	-0.80%
2022-10-31	-2.00%

**PKG 1 Difference: Scheduled Vs. Actual**

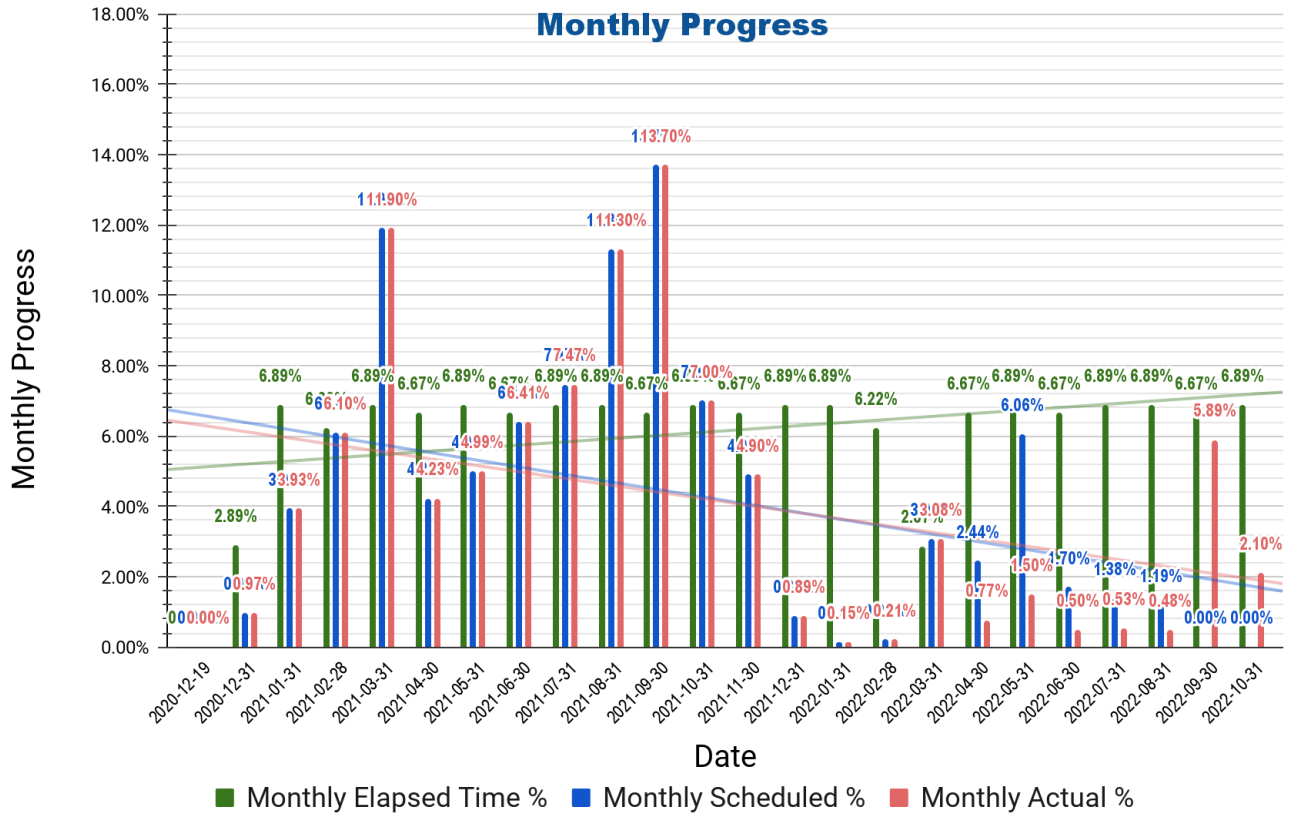
**Um Al Dananir Basic Mixed - Balqa**



### 7.3 Al Khansa'a Basic Mixed School – Balqa

Package 1 Al Khansa'a Basic Mixed - Balqa			
Date	Monthly Elapsed Time %	Monthly Scheduled %	Monthly Actual %
2020-12-19	0.00%	0.00%	0.00%
2020-12-31	2.89%	0.97%	0.97%
2021-01-31	6.89%	3.93%	3.93%
2021-02-28	6.22%	6.10%	6.10%
2021-03-31	6.89%	11.90%	11.90%
2021-04-30	6.67%	4.23%	4.23%
2021-05-31	6.89%	4.99%	4.99%
2021-06-30	6.67%	6.41%	6.41%
2021-07-31	6.89%	7.47%	7.47%
2021-08-31	6.89%	11.30%	11.30%
2021-09-30	6.67%	13.70%	13.70%
2021-10-31	6.89%	7.00%	7.00%
2021-11-30	6.67%	4.90%	4.90%
2021-12-31	6.89%	0.89%	0.89%
2022-01-31	6.89%	0.15%	0.15%
2022-02-28	6.22%	0.21%	0.21%
2022-03-31	2.87%	3.08%	3.08%
2022-04-30	6.67%	2.44%	0.77%
2022-05-31	6.89%	6.06%	1.50%
2022-06-30	6.67%	1.70%	0.50%
2022-07-31	6.89%	1.38%	0.53%
2022-08-31	6.89%	1.19%	0.48%
2022-09-30	6.67%	0.00%	5.89%
2022-10-31	6.89%	0.00%	2.10%
<b>Total</b>	<b>147.57%</b>	<b>100.00%</b>	<b>99.00%</b>

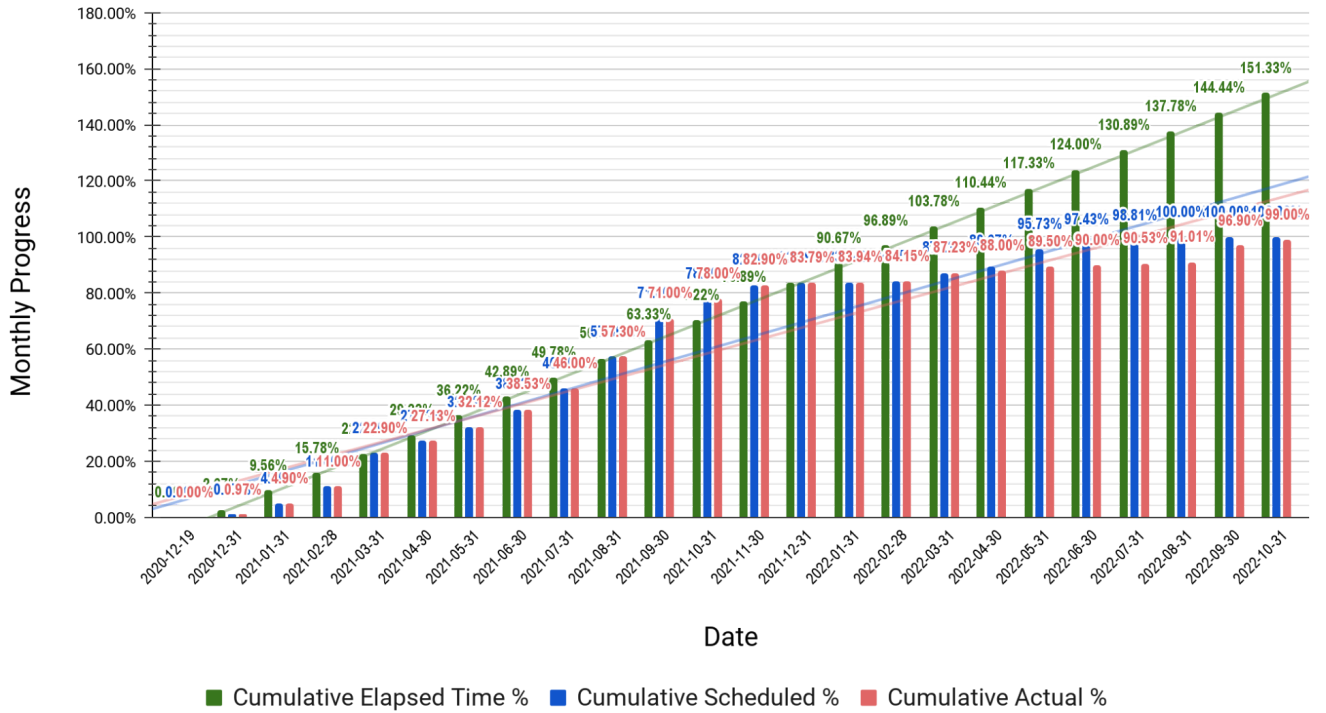
## Package 1 Al Khansa'a Basic Mixed - Balqa



Package 1 Al Khansa'a Basic Mixed - Balqa			
Date	Cumulative Elapsed Time %	Cumulative Scheduled %	Cumulative Actual %
2020-12-19	0.00%	0.00%	0.00%
2020-12-31	2.67%	0.97%	0.97%
2021-01-31	9.56%	4.90%	4.90%
2021-02-28	15.78%	11.00%	11.00%
2021-03-31	22.67%	22.90%	22.90%
2021-04-30	29.33%	27.13%	27.13%
2021-05-31	36.22%	32.12%	32.12%
2021-06-30	42.89%	38.53%	38.53%
2021-07-31	49.78%	46.00%	46.00%
2021-08-31	56.67%	57.30%	57.30%
2021-09-30	63.33%	71.00%	71.00%
2021-10-31	70.22%	78.00%	78.00%
2021-11-30	76.89%	82.90%	82.90%
2021-12-31	83.78%	83.79%	83.79%
2022-01-31	90.67%	83.94%	83.94%
2022-02-28	96.89%	84.15%	84.15%
2022-03-31	103.78%	87.23%	87.23%
2022-04-30	110.44%	89.67%	88.00%
2022-05-31	117.33%	95.73%	89.50%
2022-06-30	124.00%	97.43%	90.00%
2022-07-31	130.89%	98.81%	90.53%
2022-08-31	137.78%	100.00%	91.01%
2022-09-30	144.44%	100.00%	96.90%
2022-10-31	151.33%	100.00%	99.00%

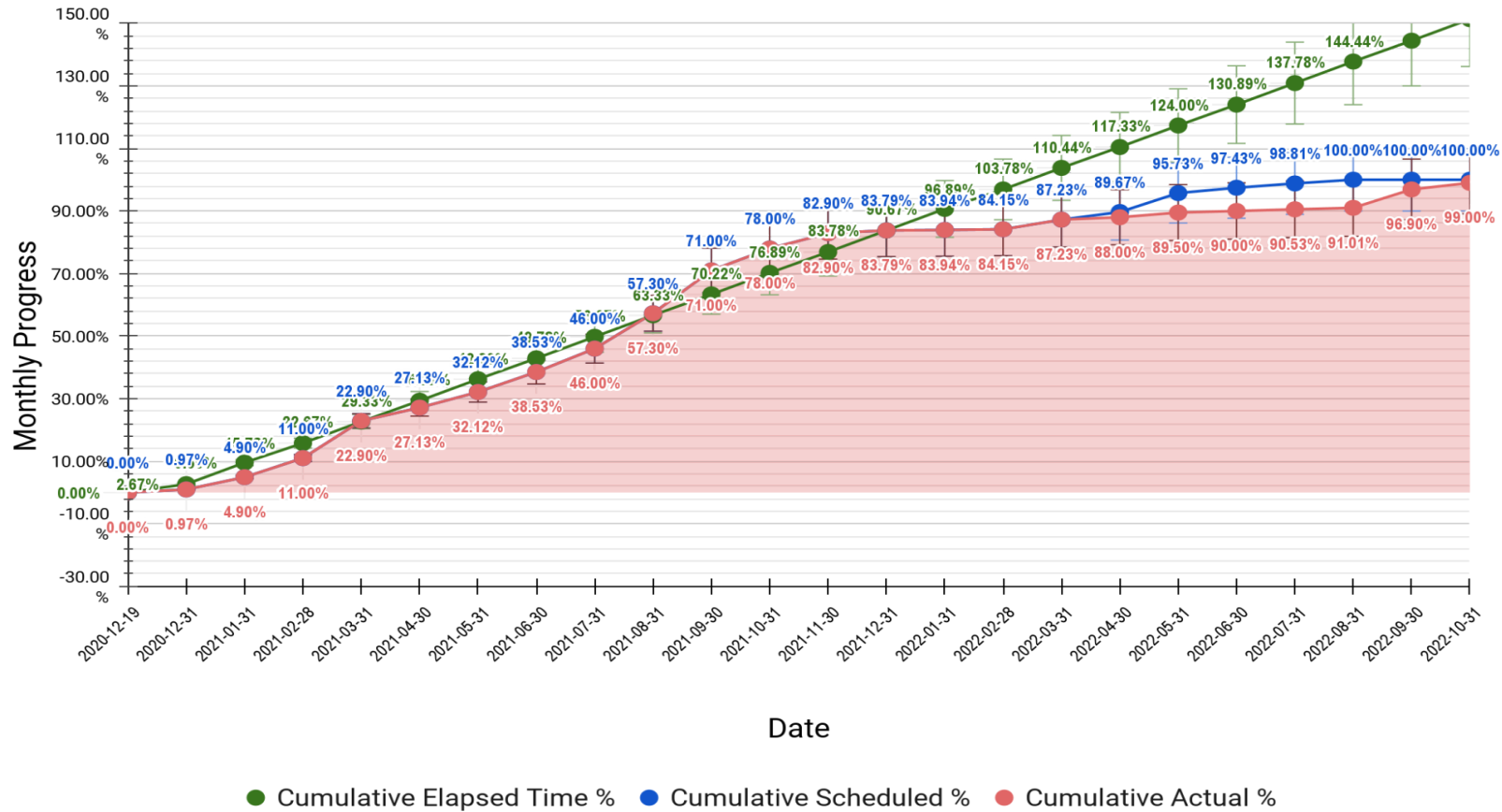
**Package 1 Al Khansa'a Basic Mixed - Balqa**

**Cumulative Progress**



**Package 1 Al Khansa'a Basic Mixed - Balqa**

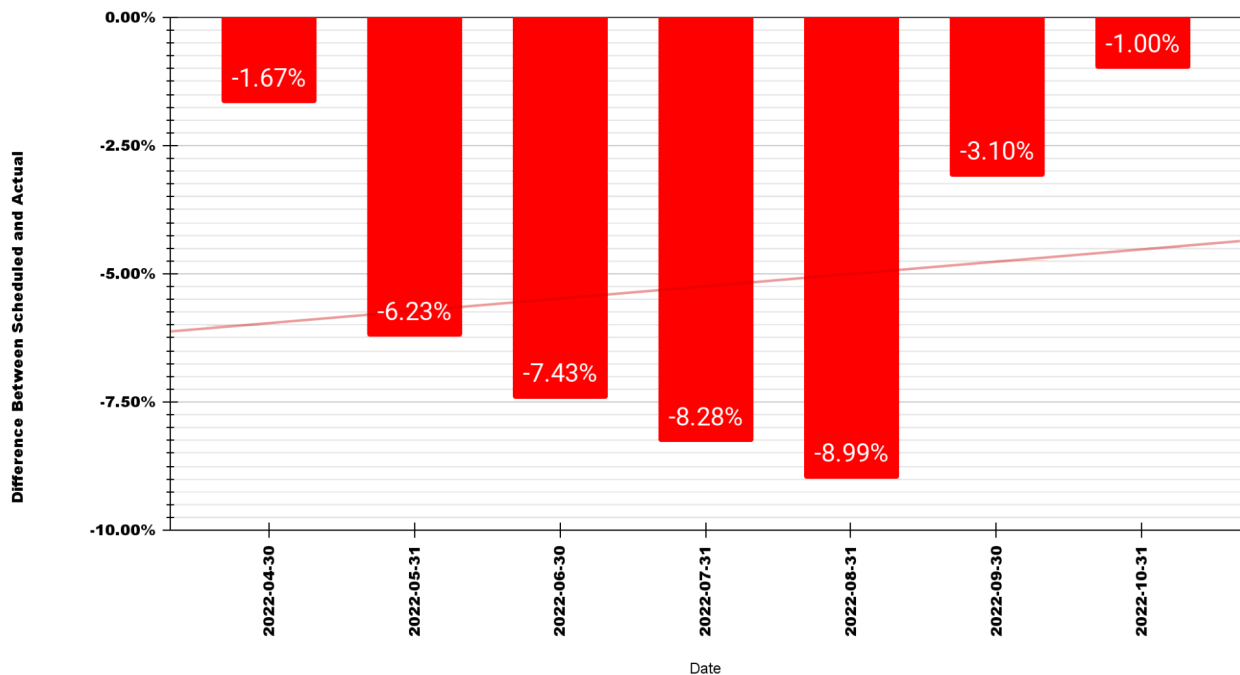
**Cumulative Progress**



Date	Difference Between Scheduled and Actual
2022-04-30	-1.67%
2022-05-31	-6.23%
2022-06-30	-7.43%
2022-07-31	-8.28%
2022-08-31	-8.99%
2022-09-30	-3.10%
2022-10-31	-1.00%

**PKG 1 Difference: Scheduled Vs. Actual**

**Al Khansa'a Basic Mixed - Balqa**



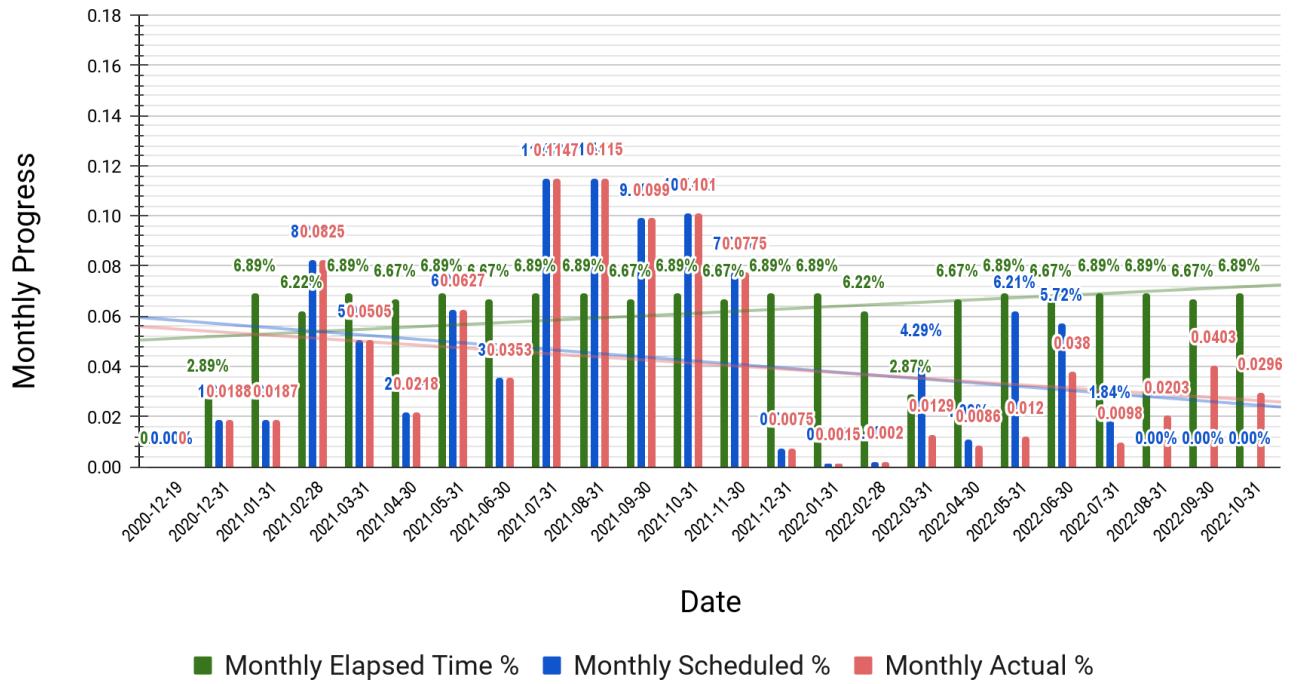


## 7.4 Khadija Bint Khwailed Basic Mixed School– Balqa

Package 1 Khadija Bint Khwailed Basic Mixed – Balqa			
Date	Monthly Elapsed Time %	Monthly Scheduled %	Monthly Actual %
2020-12-19	0.00%	0.00%	0
2020-12-31	2.89%	1.88%	1.88%
2021-01-31	6.89%	1.87%	1.87%
2021-02-28	6.22%	8.25%	8.25%
2021-03-31	6.89%	5.05%	5.05%
2021-04-30	6.67%	2.18%	2.18%
2021-05-31	6.89%	6.27%	6.27%
2021-06-30	6.67%	3.53%	3.53%
2021-07-31	6.89%	11.47%	11.47%
2021-08-31	6.89%	11.50%	11.50%
2021-09-30	6.67%	9.90%	9.90%
2021-10-31	6.89%	10.10%	10.10%
2021-11-30	6.67%	7.75%	7.75%
2021-12-31	6.89%	0.75%	0.75%
2022-01-31	6.89%	0.15%	0.15%
2022-02-28	6.22%	0.20%	0.20%
2022-03-31	2.87%	4.29%	1.29%
2022-04-30	6.67%	1.09%	0.86%
2022-05-31	6.89%	6.21%	1.20%
2022-06-30	6.67%	5.72%	3.80%
2022-07-31	6.89%	1.84%	0.98%
2022-08-31	6.89%	0.00%	2.03%
2022-09-30	6.67%	0.00%	4.03%
2022-10-31	6.89%	0.00%	2.96%
<b>Total</b>	<b>147.57%</b>	<b>100.00%</b>	<b>98.00%</b>

**Package 1 Khadija Bint Khwailed Basic Mixed - Balqa**

**Monthly Progress**

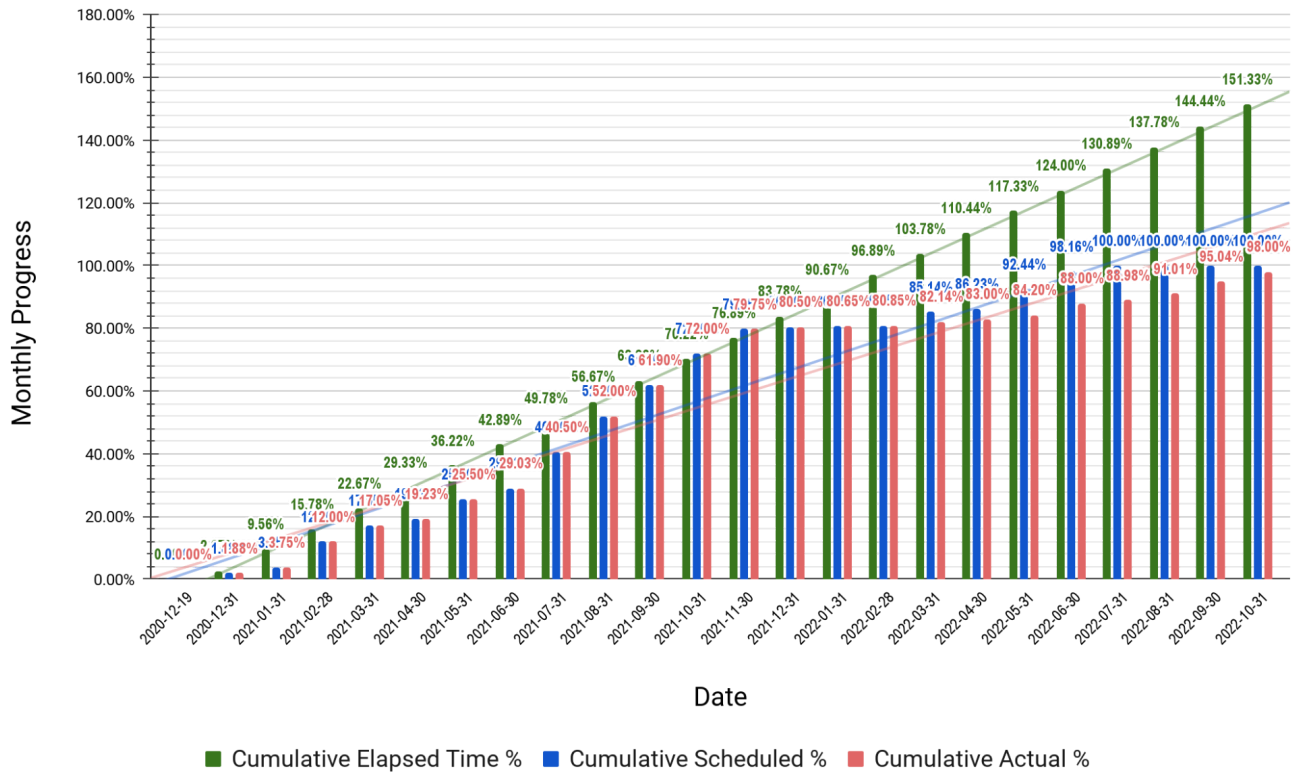


Package 1 Khadija Bint Khwailed Basic Mixed – Balqa

Date	Cumulative Elapsed Time %	Cumulative Scheduled %	Cumulative Actual %
2020-12-19	0.00%	0.00%	0.00%
2020-12-31	2.67%	1.88%	1.88%
2021-01-31	9.56%	3.75%	3.75%
2021-02-28	15.78%	12.00%	12.00%
2021-03-31	22.67%	17.05%	17.05%
2021-04-30	29.33%	19.23%	19.23%
2021-05-31	36.22%	25.50%	25.50%
2021-06-30	42.89%	29.03%	29.03%
2021-07-31	49.78%	40.50%	40.50%
2021-08-31	56.67%	52.00%	52.00%
2021-09-30	63.33%	61.90%	61.90%
2021-10-31	70.22%	72.00%	72.00%
2021-11-30	76.89%	79.75%	79.75%
2021-12-31	83.78%	80.50%	80.50%
2022-01-31	90.67%	80.65%	80.65%
2022-02-28	96.89%	80.85%	80.85%
2022-03-31	103.78%	85.14%	82.14%
2022-04-30	110.44%	86.23%	83.00%
2022-05-31	117.33%	92.44%	84.20%
2022-06-30	124.00%	98.16%	88.00%
2022-07-31	130.89%	100.00%	88.98%
2022-08-31	137.78%	100.00%	91.01%
2022-09-30	144.44%	100.00%	95.04%
2022-10-31	151.33%	100.00%	98.00%

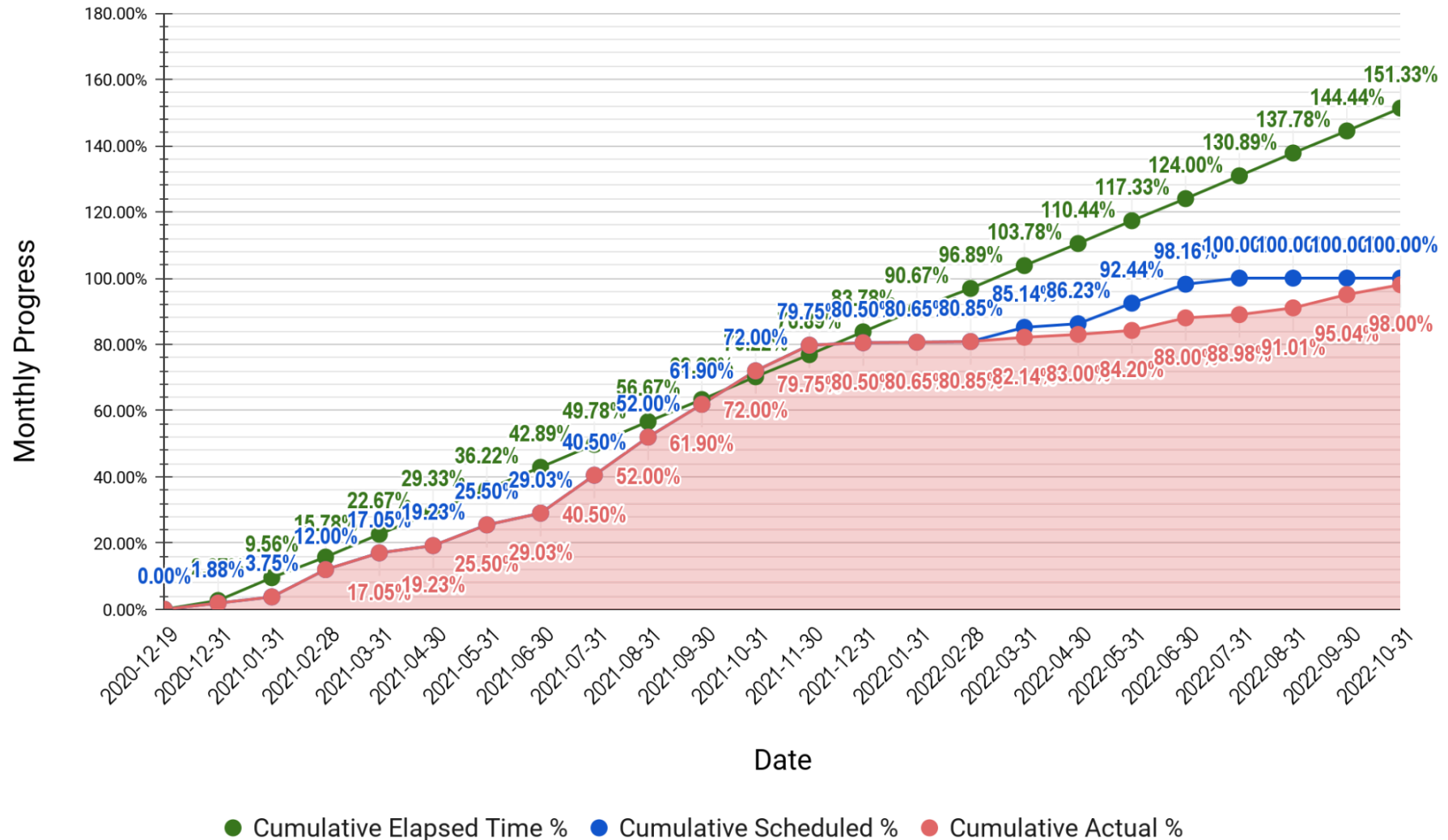
**Package 1 Khadija Bint Khwailed Basic Mixed - Balqa**

**Cumulative Progress**



## Package 1 Khadija Bint Khwailed Basic Mixed - Balqa

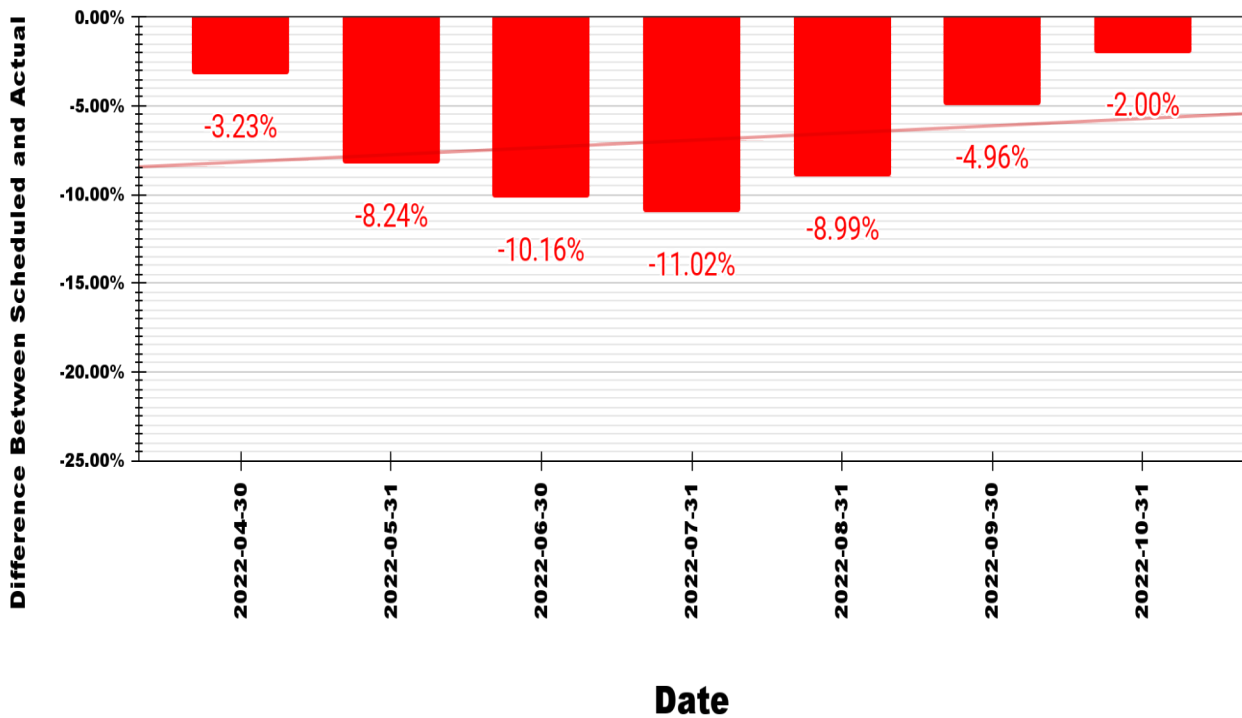
### Cumulative Progress



Date	Difference Between Scheduled and Actual
2022-04-30	-3.23%
2022-05-31	-8.24%
2022-06-30	-10.16%
2022-07-31	-11.02%
2022-08-31	-8.99%
2022-09-30	-4.96%
2022-10-31	-2.00%

PKG 1 Difference: Scheduled Vs. Actual

Khadija Bint Khwailed Basic Mixed - Balqa



## 7.5 Engineer comments on work progress

### A. Average for the three schools:

The cumulative progress -as average- for the three schools at the end of this month:

Date	Cumulative Elapsed Time %	Cumulative Scheduled %	Cumulative Actual %
2022-10-31	151.33%	100.00%	98.33%

The difference Between Scheduled and Actual is **-1.67%**

### B. Um Al Dananir Basic Mixed - Balqa :

The cumulative progress -as average- for this site at the end of this month:

Date	Cumulative Elapsed Time %	Cumulative Scheduled %	Cumulative Actual %
2022-10-31	151.33%	100.00%	98.00%

The difference Between Scheduled and Actual is **-2.00%**

### C. Al Khansa'a Basic Mixed - Balqa:

The cumulative progress -as average- for this site at the end of this month:

Date	Cumulative Elapsed Time %	Cumulative Scheduled %	Cumulative Actual %
2022-10-31	151.33%	100.00%	99.00%

The difference Between Scheduled and Actual is **-1.00%**

**D. Khadija Bint Khwailed Basic Mixed - Balqa:**

The cumulative progress -as average- for this site at the end of this month:

Date	Cumulative Elapsed Time %	Cumulative Scheduled %	Cumulative Actual %
2022-10-31	151.33%	100.00%	98.00%

The difference Between Scheduled and Actual is **-2.00%**

In accordance with the above, the contractor will be drawn to override the delay at the end of this month, to approach the cumulative progress scheduled at the end of next month.



## 7.6 Tracking Tasks in CPM

### A- Um Al Dananir Basic Mixed - Balqa :

- [https://docs.google.com/spreadsheets/d/e/2PACX-1vS-7RIH\\_iVxDkAWFUPwlgT7Aoss\\_ZID1SycyLjthB0-lsm\\_IC9jQLZudy27OqQAdahm5wwDxYCDmStN/pubhtml?gid=1247655849&single=true](https://docs.google.com/spreadsheets/d/e/2PACX-1vS-7RIH_iVxDkAWFUPwlgT7Aoss_ZID1SycyLjthB0-lsm_IC9jQLZudy27OqQAdahm5wwDxYCDmStN/pubhtml?gid=1247655849&single=true)
- [https://docs.google.com/spreadsheets/d/e/2PACX-1vS-7RIH\\_iVxDkAWFUPwlgT7Aoss\\_ZID1SycyLjthB0-lsm\\_IC9jQLZudy27OqQAdahm5wwDxYCDmStN/pubhtml?gid=726041877&single=true](https://docs.google.com/spreadsheets/d/e/2PACX-1vS-7RIH_iVxDkAWFUPwlgT7Aoss_ZID1SycyLjthB0-lsm_IC9jQLZudy27OqQAdahm5wwDxYCDmStN/pubhtml?gid=726041877&single=true)

### B- Al Khansa'a Basic Mixed - Balqa:

- [https://docs.google.com/spreadsheets/d/e/2PACX-1vS-7RIH\\_iVxDkAWFUPwlgT7Aoss\\_ZID1SycyLjthB0-lsm\\_IC9jQLZudy27OqQAdahm5wwDxYCDmStN/pubhtml?gid=303270552&single=true](https://docs.google.com/spreadsheets/d/e/2PACX-1vS-7RIH_iVxDkAWFUPwlgT7Aoss_ZID1SycyLjthB0-lsm_IC9jQLZudy27OqQAdahm5wwDxYCDmStN/pubhtml?gid=303270552&single=true)
- [https://docs.google.com/spreadsheets/d/e/2PACX-1vS-7RIH\\_iVxDkAWFUPwlgT7Aoss\\_ZID1SycyLjthB0-lsm\\_IC9jQLZudy27OqQAdahm5wwDxYCDmStN/pubhtml?gid=611852448&single=true](https://docs.google.com/spreadsheets/d/e/2PACX-1vS-7RIH_iVxDkAWFUPwlgT7Aoss_ZID1SycyLjthB0-lsm_IC9jQLZudy27OqQAdahm5wwDxYCDmStN/pubhtml?gid=611852448&single=true)

### C- Khadija Bint Khwailed Basic Mixed - Balqa:

- [https://docs.google.com/spreadsheets/d/e/2PACX-1vS-7RIH\\_iVxDkAWFUPwlgT7Aoss\\_ZID1SycyLjthB0-lsm\\_IC9jQLZudy27OqQAdahm5wwDxYCDmStN/pubhtml?gid=1300143736&single=true](https://docs.google.com/spreadsheets/d/e/2PACX-1vS-7RIH_iVxDkAWFUPwlgT7Aoss_ZID1SycyLjthB0-lsm_IC9jQLZudy27OqQAdahm5wwDxYCDmStN/pubhtml?gid=1300143736&single=true)
- [https://docs.google.com/spreadsheets/d/e/2PACX-1vS-7RIH\\_iVxDkAWFUPwlgT7Aoss\\_ZID1SycyLjthB0-lsm\\_IC9jQLZudy27OqQAdahm5wwDxYCDmStN/pubhtml?gid=868308398&single=true](https://docs.google.com/spreadsheets/d/e/2PACX-1vS-7RIH_iVxDkAWFUPwlgT7Aoss_ZID1SycyLjthB0-lsm_IC9jQLZudy27OqQAdahm5wwDxYCDmStN/pubhtml?gid=868308398&single=true)

## 8 | Submitted Materials

### 8.1 Summary of Submitted Materials

PKG 1 Summary of Submitted Materials			2022-10-31	
Summary of Submitted Materials	Total No. of Materials to be Submitted	Total No. of Submitted Materials	Submitted Materials (%)	Non Submitted Materials (%)
Structural	20	20	100.00%	0.00%
Architectural	52	52	100.00%	0.00%
Electrical	27	27	100.00%	0.00%
Mechanical	59	58	98.31%	1.69%

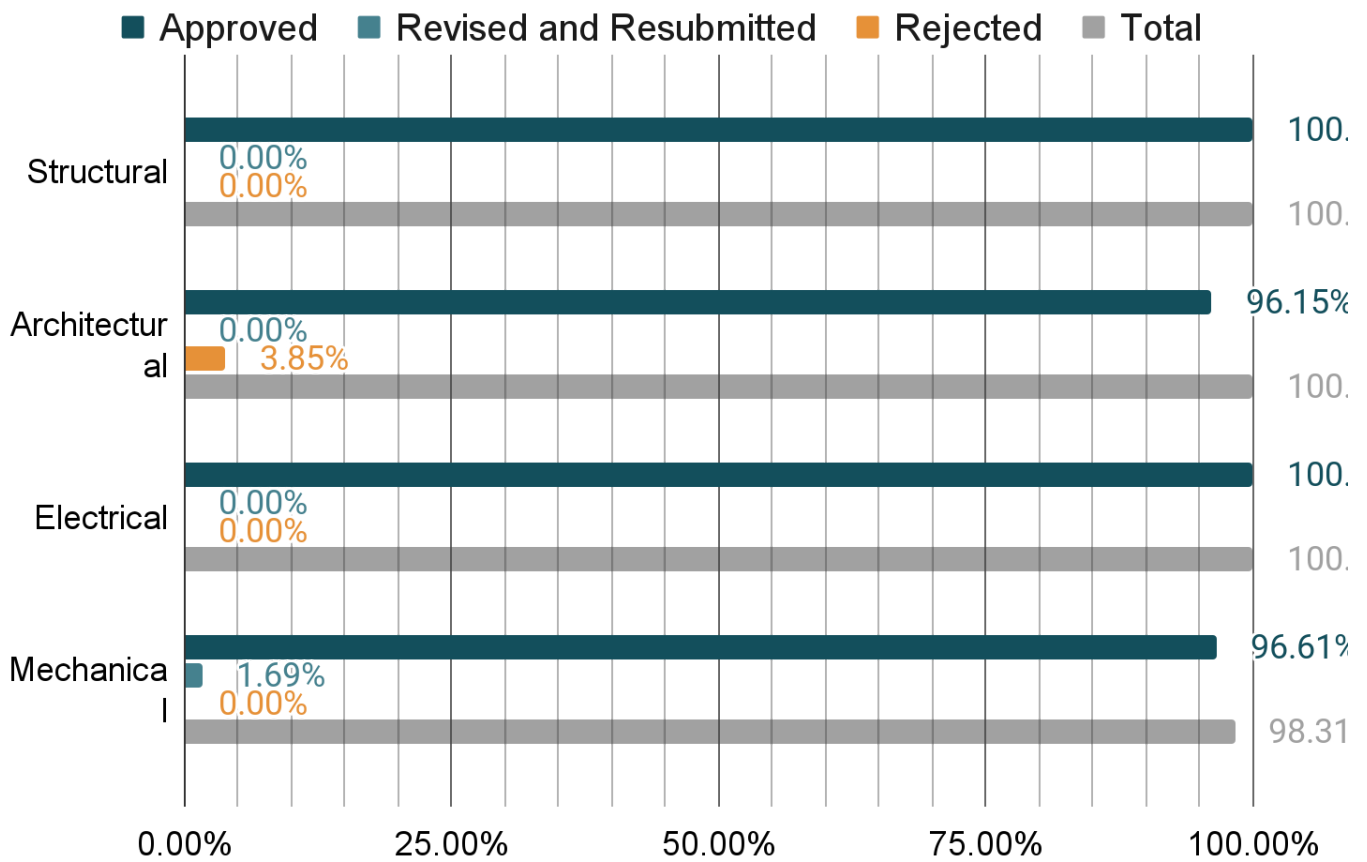
  

PKG 1 Summary of Submitted Materials (No.)				
Item	Approved	Revised and Resubmitted	Rejected	Total
Structural	20	0	0	20
Architectural	50	0	2	52
Electrical	27	0	0	27
Mechanical	57	1	0	58

PKG 1 Summary of Submitted Materials (%)				
Item	Approved	Revised and Resubmitted	Rejected	Total
Structural	100.00%	0.00%	0.00%	100.00%
Architectural	96.15%	0.00%	3.85%	100.00%
Electrical	100.00%	0.00%	0.00%	100.00%
Mechanical	96.61%	1.69%	0.00%	98.31%

## PKG 1 Summary of Submitted Materials



## 8.2 Shop Drawings & Submittal Tracking LOG

- [https://docs.google.com/spreadsheets/d/e/2PA-CX-1vSBVJOPr\\_QKITd1KN1qeXw9rakXDv6CR3XMkHKjWISXRTLWF06o46899Qw5X9VM5rby3E6kS3sykMI5/pubhtml](https://docs.google.com/spreadsheets/d/e/2PA-CX-1vSBVJOPr_QKITd1KN1qeXw9rakXDv6CR3XMkHKjWISXRTLWF06o46899Qw5X9VM5rby3E6kS3sykMI5/pubhtml)

## 8.3 Materials Submittal Vendor List

- <https://docs.google.com/spreadsheets/d/e/2PA-CX-1vS-7liMDtcLhXmAALNNiVeVn21EtNFVKr3KwFsBwx9cS1O1UP1MIl6TZGzjZiC7nJzeiQWmP6YeqNce/pubhtml>

## 9 | Correspondence Tracking Logs

- <https://docs.google.com/spreadsheets/d/e/2PA CX-1vRxmklW-oV2Uc4Bzlhvhi49p8HLUhID0c1LuR OS3SgkiZn9yMrloitaBOgHavbBsTht1JvjA94w-TTt/pubhtml>

## 10 | Non-conformance Report Tracking Log

### 10.1 HSE

- <https://docs.google.com/spreadsheets/d/e/2PA CX-1vT6mvGG8vnmmlqC8HvbefLR7aORPtpODzerwBwaAiNGSGfp7JkmOfqgVXIfb4jSbjlH3XwiqDLWTgK/pubhtml?gid=0&single=true>

### 10.2 QCs

#### Um-Al Dananir Basic Mixed School-Balqa

- [https://b9686515-2954-4919-832c-2c36b1d1850f.filesusr.com/ugd/c80178\\_95e502375b0049988cfc31a89a65f725.pdf](https://b9686515-2954-4919-832c-2c36b1d1850f.filesusr.com/ugd/c80178_95e502375b0049988cfc31a89a65f725.pdf)
- [https://b9686515-2954-4919-832c-2c36b1d1850f.filesusr.com/ugd/c80178\\_eb63ac7cc3904b9abd3c177770be25ee.pdf](https://b9686515-2954-4919-832c-2c36b1d1850f.filesusr.com/ugd/c80178_eb63ac7cc3904b9abd3c177770be25ee.pdf)
- [https://b9686515-2954-4919-832c-2c36b1d1850f.filesusr.com/ugd/c80178\\_a5bed82f2f65425e92d6cac982097584.pdf](https://b9686515-2954-4919-832c-2c36b1d1850f.filesusr.com/ugd/c80178_a5bed82f2f65425e92d6cac982097584.pdf)
- [https://b9686515-2954-4919-832c-2c36b1d1850f.filesusr.com/ugd/bed180\\_dc9271608d274e468da310d5c82df3c3.pdf](https://b9686515-2954-4919-832c-2c36b1d1850f.filesusr.com/ugd/bed180_dc9271608d274e468da310d5c82df3c3.pdf)
- [https://b9686515-2954-4919-832c-2c36b1d1850f.filesusr.com/ugd/bed180\\_79a022b4b8d648998eb1e90d68417a61.pdf](https://b9686515-2954-4919-832c-2c36b1d1850f.filesusr.com/ugd/bed180_79a022b4b8d648998eb1e90d68417a61.pdf)

- ❑ [https://b9686515-2954-4919-832c-2c36b1d1850f.filesusr.com/ugd/bed180\\_4488d9e64b524451a802b3c94ed30776.pdf](https://b9686515-2954-4919-832c-2c36b1d1850f.filesusr.com/ugd/bed180_4488d9e64b524451a802b3c94ed30776.pdf)
- ❑ [https://b9686515-2954-4919-832c-2c36b1d1850f.filesusr.com/ugd/bed180\\_843c08844e4843e1a17fab223b3bb5f2.pdf](https://b9686515-2954-4919-832c-2c36b1d1850f.filesusr.com/ugd/bed180_843c08844e4843e1a17fab223b3bb5f2.pdf)
- ❑ [https://b9686515-2954-4919-832c-2c36b1d1850f.filesusr.com/ugd/bed180\\_4218411f42d84dc9897557b5221ec7d0.pdf](https://b9686515-2954-4919-832c-2c36b1d1850f.filesusr.com/ugd/bed180_4218411f42d84dc9897557b5221ec7d0.pdf)
- ❑ [https://b9686515-2954-4919-832c-2c36b1d1850f.filesusr.com/ugd/bed180\\_16c046b55d144f7899b31b36694a6a77.pdf](https://b9686515-2954-4919-832c-2c36b1d1850f.filesusr.com/ugd/bed180_16c046b55d144f7899b31b36694a6a77.pdf)
- ❑ [https://b9686515-2954-4919-832c-2c36b1d1850f.filesusr.com/ugd/bed180\\_1069edd1e6844bb28532a283e4e05907.pdf](https://b9686515-2954-4919-832c-2c36b1d1850f.filesusr.com/ugd/bed180_1069edd1e6844bb28532a283e4e05907.pdf)
- ❑ [https://b9686515-2954-4919-832c-2c36b1d1850f.filesusr.com/ugd/bed180\\_2f89add848d84b6ca962258c1c014afd.pdf](https://b9686515-2954-4919-832c-2c36b1d1850f.filesusr.com/ugd/bed180_2f89add848d84b6ca962258c1c014afd.pdf)
- ❑ [https://b9686515-2954-4919-832c-2c36b1d1850f.filesusr.com/ugd/bed180\\_8659da8e566f4a6bb12c4e4946bfdeaf.pdf](https://b9686515-2954-4919-832c-2c36b1d1850f.filesusr.com/ugd/bed180_8659da8e566f4a6bb12c4e4946bfdeaf.pdf)
- ❑ [https://b9686515-2954-4919-832c-2c36b1d1850f.filesusr.com/ugd/bed180\\_48a0121f5515422c94c54b41091e9f8e.pdf](https://b9686515-2954-4919-832c-2c36b1d1850f.filesusr.com/ugd/bed180_48a0121f5515422c94c54b41091e9f8e.pdf)
- ❑ [https://b9686515-2954-4919-832c-2c36b1d1850f.filesusr.com/ugd/bed180\\_8872945968f54752a3e8d8e6a5c668d9.pdf](https://b9686515-2954-4919-832c-2c36b1d1850f.filesusr.com/ugd/bed180_8872945968f54752a3e8d8e6a5c668d9.pdf)
- ❑ [https://www.medanat.site/\\_files/ugd/c80178\\_9a8e87c001da48579cf02ac1f51a4ac5.pdf](https://www.medanat.site/_files/ugd/c80178_9a8e87c001da48579cf02ac1f51a4ac5.pdf)
- ❑ [https://www.medanat.site/\\_files/ugd/c80178\\_735d1dc13f8a46ceb21602e2c1c40c1c.pdf](https://www.medanat.site/_files/ugd/c80178_735d1dc13f8a46ceb21602e2c1c40c1c.pdf)
- ❑ [https://www.medanat.site/\\_files/ugd/c80178\\_aff2a16a66794a35997c5108798d34b9.pdf](https://www.medanat.site/_files/ugd/c80178_aff2a16a66794a35997c5108798d34b9.pdf)
- ❑ [https://www.medanat.site/\\_files/ugd/c80178\\_f2d38b9ce63943b5bd1e2cb05a662b6b.pdf](https://www.medanat.site/_files/ugd/c80178_f2d38b9ce63943b5bd1e2cb05a662b6b.pdf)

- ❑ [https://www.medanat.site/\\_files/ugd/c80178\\_49a09a47b9d24e10afccea5befbaf23f.pdf](https://www.medanat.site/_files/ugd/c80178_49a09a47b9d24e10afccea5befbaf23f.pdf)
- ❑ [https://www.medanat.site/\\_files/ugd/c80178\\_0099c92e4d5a483a9a14844a71cddb8e.pdf](https://www.medanat.site/_files/ugd/c80178_0099c92e4d5a483a9a14844a71cddb8e.pdf)
- ❑ [https://www.medanat.site/\\_files/ugd/c80178\\_9c2132e97cd147189bb8d709f2829dc8.pdf](https://www.medanat.site/_files/ugd/c80178_9c2132e97cd147189bb8d709f2829dc8.pdf)

## Al Khansa' Basic Mixed School- Balqa

- ❑ [https://b9686515-2954-4919-832c-2c36b1d1850f.filesusr.com/ugd/c80178\\_3df1cb9167a44ead828afb50d1e03462.pdf](https://b9686515-2954-4919-832c-2c36b1d1850f.filesusr.com/ugd/c80178_3df1cb9167a44ead828afb50d1e03462.pdf)
- ❑ [https://b9686515-2954-4919-832c-2c36b1d1850f.filesusr.com/ugd/c80178\\_55d0ccfa1fb5431f983b66e1c868a836.pdf](https://b9686515-2954-4919-832c-2c36b1d1850f.filesusr.com/ugd/c80178_55d0ccfa1fb5431f983b66e1c868a836.pdf)
- ❑ [https://b9686515-2954-4919-832c-2c36b1d1850f.filesusr.com/ugd/bed180\\_6a2a055bf5e547fbbdf2f5f7d1abf90.pdf](https://b9686515-2954-4919-832c-2c36b1d1850f.filesusr.com/ugd/bed180_6a2a055bf5e547fbbdf2f5f7d1abf90.pdf)
- ❑ [https://b9686515-2954-4919-832c-2c36b1d1850f.filesusr.com/ugd/bed180\\_fbaf1393c9a84eca80d5201cd99ca750.pdf](https://b9686515-2954-4919-832c-2c36b1d1850f.filesusr.com/ugd/bed180_fbaf1393c9a84eca80d5201cd99ca750.pdf)
- ❑ [https://b9686515-2954-4919-832c-2c36b1d1850f.filesusr.com/ugd/bed180\\_8639195014414d7e9a0e2cfc569a5c89.pdf](https://b9686515-2954-4919-832c-2c36b1d1850f.filesusr.com/ugd/bed180_8639195014414d7e9a0e2cfc569a5c89.pdf)
- ❑ [https://b9686515-2954-4919-832c-2c36b1d1850f.filesusr.com/ugd/bed180\\_725bc2d4b16641f8b7541cb87564cc73.pdf](https://b9686515-2954-4919-832c-2c36b1d1850f.filesusr.com/ugd/bed180_725bc2d4b16641f8b7541cb87564cc73.pdf)
- ❑ [https://b9686515-2954-4919-832c-2c36b1d1850f.filesusr.com/ugd/bed180\\_3d550dfaceb542e9a4e375fbe3596f5d.pdf](https://b9686515-2954-4919-832c-2c36b1d1850f.filesusr.com/ugd/bed180_3d550dfaceb542e9a4e375fbe3596f5d.pdf)
- ❑ [https://b9686515-2954-4919-832c-2c36b1d1850f.filesusr.com/ugd/bed180\\_9e07c4cbcc4f4d7288a9dd48afb2bc70.pdf](https://b9686515-2954-4919-832c-2c36b1d1850f.filesusr.com/ugd/bed180_9e07c4cbcc4f4d7288a9dd48afb2bc70.pdf)
- ❑ [https://b9686515-2954-4919-832c-2c36b1d1850f.filesusr.com/ugd/bed180\\_e466af6f544f4a899f79e563e95b7c52.pdf](https://b9686515-2954-4919-832c-2c36b1d1850f.filesusr.com/ugd/bed180_e466af6f544f4a899f79e563e95b7c52.pdf)

- ❑ [https://b9686515-2954-4919-832c-2c36b1d1850f.filesusr.com/ugd/bed180\\_bfb04742e21440498ef1bb8c21a3ed30.pdf](https://b9686515-2954-4919-832c-2c36b1d1850f.filesusr.com/ugd/bed180_bfb04742e21440498ef1bb8c21a3ed30.pdf)
- ❑ [https://www.medanat.site/\\_files/ugd/c80178\\_c485d11ead8e425ab195e0518415bb4f.pdf](https://www.medanat.site/_files/ugd/c80178_c485d11ead8e425ab195e0518415bb4f.pdf)
- ❑ [https://www.medanat.site/\\_files/ugd/c80178\\_a92859f587c744b68077bc45dabdd519.pdf](https://www.medanat.site/_files/ugd/c80178_a92859f587c744b68077bc45dabdd519.pdf)
- ❑ [https://www.medanat.site/\\_files/ugd/c80178\\_f552365f9cc44d0a92de9dc7c31c0997.pdf](https://www.medanat.site/_files/ugd/c80178_f552365f9cc44d0a92de9dc7c31c0997.pdf)
- ❑ [https://www.medanat.site/\\_files/ugd/c80178\\_4883186124df4fd69d8eaa888b55d8d4.pdf](https://www.medanat.site/_files/ugd/c80178_4883186124df4fd69d8eaa888b55d8d4.pdf)
- ❑ [https://www.medanat.site/\\_files/ugd/c80178\\_9df0cab66e74730b027f089c9d07bea.pdf](https://www.medanat.site/_files/ugd/c80178_9df0cab66e74730b027f089c9d07bea.pdf)
- ❑ [https://www.medanat.site/\\_files/ugd/c80178\\_240ac23851404242ba40cd40b1c586a9.pdf](https://www.medanat.site/_files/ugd/c80178_240ac23851404242ba40cd40b1c586a9.pdf)
- ❑ [https://www.medanat.site/\\_files/ugd/c80178\\_4758583ff3ab42668ff0d238e1a58f64.pdf](https://www.medanat.site/_files/ugd/c80178_4758583ff3ab42668ff0d238e1a58f64.pdf)

## **Khadija Bint Khwailed Basic Mixed School- Al Shouna Al Janoubia**

- ❑ [https://b9686515-2954-4919-832c-2c36b1d1850f.filesusr.com/ugd/c80178\\_d1ad165f5a7e4200b9795f06ff305021.pdf](https://b9686515-2954-4919-832c-2c36b1d1850f.filesusr.com/ugd/c80178_d1ad165f5a7e4200b9795f06ff305021.pdf)
- ❑ [https://b9686515-2954-4919-832c-2c36b1d1850f.filesusr.com/ugd/c80178\\_29d09e4a42a84e64af0cc5c39cd84ec1.pdf](https://b9686515-2954-4919-832c-2c36b1d1850f.filesusr.com/ugd/c80178_29d09e4a42a84e64af0cc5c39cd84ec1.pdf)
- ❑ [https://b9686515-2954-4919-832c-2c36b1d1850f.filesusr.com/ugd/c80178\\_74a56ac0b7f646e48fce9594565434b4.pdf](https://b9686515-2954-4919-832c-2c36b1d1850f.filesusr.com/ugd/c80178_74a56ac0b7f646e48fce9594565434b4.pdf)
- ❑ [https://b9686515-2954-4919-832c-2c36b1d1850f.filesusr.com/ugd/c80178\\_7e5d9234db994914b5191928b2091cdc.pdf](https://b9686515-2954-4919-832c-2c36b1d1850f.filesusr.com/ugd/c80178_7e5d9234db994914b5191928b2091cdc.pdf)
- ❑ [https://b9686515-2954-4919-832c-2c36b1d1850f.filesusr.com/ugd/bed180\\_d4bbbc0d96634780a1ffe22a300a2912.pdf](https://b9686515-2954-4919-832c-2c36b1d1850f.filesusr.com/ugd/bed180_d4bbbc0d96634780a1ffe22a300a2912.pdf)

- ❑ [https://b9686515-2954-4919-832c-2c36b1d1850f.filesusr.com/ugd/bed180\\_3b8345e57b01415f87a5aa6683169f19.pdf](https://b9686515-2954-4919-832c-2c36b1d1850f.filesusr.com/ugd/bed180_3b8345e57b01415f87a5aa6683169f19.pdf)
- ❑ [https://b9686515-2954-4919-832c-2c36b1d1850f.filesusr.com/ugd/bed180\\_0e049bc7a8964766a20da3e296250fdc.pdf](https://b9686515-2954-4919-832c-2c36b1d1850f.filesusr.com/ugd/bed180_0e049bc7a8964766a20da3e296250fdc.pdf)
- ❑ [https://b9686515-2954-4919-832c-2c36b1d1850f.filesusr.com/ugd/bed180\\_dac873b3c2f74be8966b6f7507af0ed5.pdf](https://b9686515-2954-4919-832c-2c36b1d1850f.filesusr.com/ugd/bed180_dac873b3c2f74be8966b6f7507af0ed5.pdf)
- ❑ [https://b9686515-2954-4919-832c-2c36b1d1850f.filesusr.com/ugd/bed180\\_9de3974b84e943549bed792adf4885e7.pdf](https://b9686515-2954-4919-832c-2c36b1d1850f.filesusr.com/ugd/bed180_9de3974b84e943549bed792adf4885e7.pdf)
- ❑ [https://b9686515-2954-4919-832c-2c36b1d1850f.filesusr.com/ugd/bed180\\_3c00f33a76944118a16635e9d0e5f8a6.pdf](https://b9686515-2954-4919-832c-2c36b1d1850f.filesusr.com/ugd/bed180_3c00f33a76944118a16635e9d0e5f8a6.pdf)
- ❑ [https://b9686515-2954-4919-832c-2c36b1d1850f.filesusr.com/ugd/bed180\\_a22e5461a7d245208749498b136c8b03.pdf](https://b9686515-2954-4919-832c-2c36b1d1850f.filesusr.com/ugd/bed180_a22e5461a7d245208749498b136c8b03.pdf)
- ❑ [https://b9686515-2954-4919-832c-2c36b1d1850f.filesusr.com/ugd/bed180\\_8fa91c4249724f65b63955fef0e2f408.pdf](https://b9686515-2954-4919-832c-2c36b1d1850f.filesusr.com/ugd/bed180_8fa91c4249724f65b63955fef0e2f408.pdf)
- ❑ [https://www.medanat.site/\\_files/ugd/c80178\\_85e796801ac047eeb575c0a7782161be.pdf](https://www.medanat.site/_files/ugd/c80178_85e796801ac047eeb575c0a7782161be.pdf)
- ❑ [https://www.medanat.site/\\_files/ugd/c80178\\_156c008afd804218a0d63535f73ece3d.pdf](https://www.medanat.site/_files/ugd/c80178_156c008afd804218a0d63535f73ece3d.pdf)
- ❑ [https://www.medanat.site/\\_files/ugd/c80178\\_211c3ea1c8ae4a5a91f0ae1078decc40.pdf](https://www.medanat.site/_files/ugd/c80178_211c3ea1c8ae4a5a91f0ae1078decc40.pdf)
- ❑ [https://www.medanat.site/\\_files/ugd/c80178\\_5fe2cf488bb9474b9e62b081bc033503.pdf](https://www.medanat.site/_files/ugd/c80178_5fe2cf488bb9474b9e62b081bc033503.pdf)
- ❑ [https://www.medanat.site/\\_files/ugd/c80178\\_d7699f6799354eae8c7f5766fe3e38b1.pdf](https://www.medanat.site/_files/ugd/c80178_d7699f6799354eae8c7f5766fe3e38b1.pdf)
- ❑ [https://www.medanat.site/\\_files/ugd/c80178\\_240ac23851404242ba40cd40b1c586a9.pdf](https://www.medanat.site/_files/ugd/c80178_240ac23851404242ba40cd40b1c586a9.pdf)
- ❑ [https://www.medanat.site/\\_files/ugd/c80178\\_0e0d97a78a7d449e9b34374e99f47e02.pdf](https://www.medanat.site/_files/ugd/c80178_0e0d97a78a7d449e9b34374e99f47e02.pdf)



## 10.3 NCRs

- ❑ <https://docs.google.com/spreadsheets/d/e/2PA-CX-1vSnOu-cjpMgCuNli-kgJGVM0U9qKnc3ahiGgSdQj9c01v9UmbwwjKul-WbxeeY1ScCmcVnJJyN58Ggo/pubhtml?gid=0&single=true>
- ❑ <https://docs.google.com/spreadsheets/d/e/2PA-CX-1vSnOu-cjpMgCuNli-kgJGVM0U9qKnc3ahiGgSdQj9c01v9UmbwwjKul-WbxeeY1ScCmcVnJJyN58Ggo/pubhtml?gid=485613624&single=true>
- ❑ <https://docs.google.com/spreadsheets/d/e/2PA-CX-1vSnOu-cjpMgCuNli-kgJGVM0U9qKnc3ahiGgSdQj9c01v9UmbwwjKul-WbxeeY1ScCmcVnJJyN58Ggo/pubhtml?gid=381015841&single=true>

## 11 | Request For Information Tracking Logs

### 11.1 RFIs-Designer

- ❑ <https://docs.google.com/spreadsheets/d/e/2PA-CX-1vTep4szmROSbdvnCNY5WpbEVppB19tbfq8-1FS17ImwYUEbk23S7YMFUGTgp1kLfIOJAcKfmX9TrOxz/pubhtml?gid=0&single=true>

### 11.2 RFIs-Contractor

- ❑ [https://docs.google.com/spreadsheets/d/e/2PA-CX-1vQvCu8gwujakdp7DuoJp20LcvCkQ9g19Ki2ORdE7xuluvd9EcOZBdU2pLShxCppQTaBeL7gGoG\\_AXy5/pubhtml?gid=0&single=true](https://docs.google.com/spreadsheets/d/e/2PA-CX-1vQvCu8gwujakdp7DuoJp20LcvCkQ9g19Ki2ORdE7xuluvd9EcOZBdU2pLShxCppQTaBeL7gGoG_AXy5/pubhtml?gid=0&single=true)

## 12 | Site problems and Solutions

**All are Solved**

## 13 | Meetings and Site Visits

### 13.1 Coordination & Progress Meetings

Coordination & Progress Meetings				
No.	Date	Location	Parties	Agenda
1	To be announced	To be announced	<ul style="list-style-type: none"> <li>● MPWH</li> <li>● USAID</li> <li>● Trigon</li> <li>● Wahib Medanat</li> <li>● Dijlah Est. Const. Contr.</li> </ul>	<p><b>October Monthly Progress Meeting:</b></p> <ul style="list-style-type: none"> <li>● Health, Safety and Environment.</li> <li>● Site borders, boundary walls/ Obstacles.</li> <li>● Progress review in general.</li> <li>● Construction Schedule and Update- using the construction schedule, review and projection/ the Contractor.</li> <li>● Quality Control.</li> <li>● Status of submittals.</li> </ul>

## 13.2 Site Visits

Site Visits				
No.	Date	Location	Parties	Agenda
1	-	-	-	-

### 13.3 Regular Monthly Site Visits (Home Office Support)

Regular Monthly Sites Visits (Home Office Support)				
1	09/10/2022	Al Khansa' Basic Mixed School- Al Balqa	<ul style="list-style-type: none"> <li>• Engineer Rep.</li> </ul>	<ul style="list-style-type: none"> <li>• The supervision team observed that the Contractor is working in the finishing of plastering work (Decorative Plaster Graffio) for the external boundary and retaining walls and gave him the necessary remarks.</li> <li>• The team observed that the Contractor is working on the application of the final coat of painting and gave him the necessary remarks.</li> <li>• The team observed that the Contractor has started installing stones for the riprap behind the boundary walls no. 03 and 04.</li> <li>• The team inspected the tiling work of Interlock tiles and curbstone.</li> </ul>
2	09/10/2022	Khadija Bint Khwailed Basic Mixed School- Al Shouna Al Janoubia	<ul style="list-style-type: none"> <li>• Engineer Rep.</li> </ul>	<ul style="list-style-type: none"> <li>• The supervision team inspected the finishing of the painting work at the building.</li> <li>• The team observed that the Contractor is planting trees and shrubs.</li> <li>• The team inspected the electrical and mechanical works done at the school building.</li> </ul>

3	22/09/2022	UM Al Dananir Basic Mixed School- Al Balqa	<ul style="list-style-type: none"><li>• Engineer Rep.</li></ul>	<ul style="list-style-type: none"><li>• The supervision team observed that the Contractor is in the process of replacing the broken interlock tiles at the morning assembly area with new acceptable ones.</li><li>• The team inspected the decorative plastering works at the boundary walls no. 05 and 06, along with the guard house.</li><li>• The team observed that the Contractor is fixing the waterproofing membrane for the roof shafts.</li><li>• The team inspected the installation of stone benches at the southern side of the site.</li></ul>
---	------------	--	---	---

Home Office Support, October 09, 2022– Al Khansa’ Basic Mixed School– Al Balqa

(Refer to 13.3 Site Visits Table)



SKEP III Home Office Support Site Visit Report

WAHIB  
 MEDANAT  
 consultant engineers

Consultant	Wahib Medanat Consultant Engineer	Rep No.	12-09102022
Contractor	Derar Saraireh & Sons for Engineering & Contracting	Tender No.	(11/2019/USAID/SKEP/3/S) Schools for a Knowledge Economy Project (SKEP) - Phase (3) Package (1, 2)
Site Name	Al Khansa’ Basic Mixed School- Al Balqa	Day/ Date	Sun. 09/10/2022
Duration of Project	450 Calendar Days	Total Project Budget	9,789,417.840 JD

No.	Visitors		Remarks
1	Suhair Amarin	- Project Dir./Head of Architectural Department	
2	Hashem Abu Kwail	- Senior Civil Engineer	
3	Akram Khammes	- Head of Electrical Department	
4	Marwan Sonna’a	- Head of Mechanical Department	
5	Hasan Shaqboua	- Quality Control Manager	

Visit Notes

No.	Description
1	The supervision team observed that the Contractor is working in the finishing of plastering work (Decorative Plaster Graffio) for the external boundary and retaining walls and gave him the necessary remarks.
2	The team observed that the Contractor is working on the application of the final coat of painting and gave him the necessary remarks.
3	The team observed that the Contractor is almost finished with the installation of the riprap behind the boundary walls no. 03 and 04.
4	The team inspected the tiling work of Interlock tiles and curbstone.

1



SKEP III Home Office Support Site Visit Report

WAHIB  
MEDANAT  
consultant engineers



General view of the project site  
(figure: 01 & 02)



(figure:02)

2

\\SERVER\Date\F\PROJECTS FILES\368\Home office support Site Visits\October 2022\Done\12-09102022.docx  
Form # QP SUP 01-18, Rev.1





SKEP III Home Office Support Site Visit Report

WAHIB  
MEDANAT  
consultant engineers



The supervision team observed that the Contractor is working in the finishing of plastering work (Decorative Plaster Graffio) for the external boundary and retaining walls

(figure:03)



The team inspected the interlock tiling

(figure:04)

3





SKEP III Home Office Support Site Visit Report

WAHIB  
MEDANAT  
consultant engineers



Curbstone works next the KG

(figure:05)



The team observed that the Contractor finishing painting works at the classrooms and corridors

(figure:06)

4

**Home Office Support, October 09, 2022– Khadija Bint Khwailed Basic Mixed School- Al Shouna Al Janoubia**

(Refer to 13.3 Site Visits Table)



SKEP III Home Office Support Site Visit Report

WAHIB  
 MEDANAT  
 consultant engineers

Consultant	Wahib Medanat Consultant Engineer	Rep No.	13-09102022
Contractor	Derar Saraireh & Sons for Engineering & Contracting	Tender No.	(11/2019/USAID/SKEP/3/S) Schools for a Knowledge Economy Project (SKEP) - Phase (3) Package (1, 2)
Site Name	Khadija Bint Khwailed Basic Mixed School- Shouna Janoubia	Day/ Date	Sun. 09/10/2022
Duration of Project	450 Calendar Days	Total Project Budget	9,789,417.840 JD

No.	Visitors		Remarks
1	Suhair Amarin	- Project Dir./Head of Architectural Department	
2	Hashem Abu Kwaik	- Senior Civil Engineer	
3	Akram Khammes	- Head of Electrical Department	
4	Marwan Sonna'a	- Head of Mechanical Department	
5	Hasan Shaqboua	-Quality Control Manager	

Visit Notes

No.	Description
1	The supervision team inspected the finishing of the painting work at the building.
2	The team observed that the Contractor is planting trees and shrubs.
3	The team inspected the electrical and mechanical works done at the school building.



SKEP III Home Office Support Site Visit Report

WAHIB  
MEDANAT  
consultant engineers



General view  
of the project  
site

(figure: 01 & 02)

(figure:01)



(figure:02)



### SKEP III Home Office Support Site Visit Report

WAHIB  
MEDANAT  
consultant engineers



The team observed that the Contractor is planting trees and shrubs

(figure:03)



The team inspected the mechanical works done at the boiler room

(figure:04)



SKEP III Home Office Support Site Visit Report

WAHIB  
MEDANAT  
consultant engineers



(figure:05)



The supervision team inspected the finishing of the painting work at the building

(figure:05 & 06)

(figure:06)



Home Office Support, October 22, 2022– Um Al Dananir Basic Mixed School- Al Balqa

(Refer to 13.3 Site Visits Table)



SKEP III Home Office Support Site Visit Report

WAHIB  
 MEDANAT  
 consultant engineers

Consultant	Wahib Medanat Consultant Engineer	Rep No.	11-22102022
Contractor	Derar Saraireh & Sons for Engineering & Contracting	Tender No.	(11/2019/USAID/SKEP/3/S) Schools for a Knowledge Economy Project (SKEP) - Phase (3) Package (1, 2)
Site Name	Um Al Dananir Basic Mixed School- Al Balqa	Day/ Date	Sat.22/10/2022
Duration of Project	450 Calendar Days	Total Project Budget	9,789,417.840 JD

No.	Visitors		Remarks
1	Suhair Amarin	- Project Dir./Head of Architectural Department	
2	Hashem Abu Kwailk	- Senior Civil Engineer	
3	Akram Khammes	- Head of Electrical Department	
4	Marwan Sanna'a	- Head of Mechanical Department	
5	Hasan Shaqboua	- Quality Control Manager	

Visit Notes

No.	Description
1	The supervision team observed that the Contractor is in the process of replacing the broken interlock tiles at the morning assembly area with new acceptable ones.
2	The team inspected the decorative plastering works at the boundary walls no. 05 and 06, along with the guard house.
3	The team observed that the Contractor is fixing the waterproofing membrane for the roof shafts.
4	The team inspected the installation of stone benches at the southern side of the site.



SKEP III Home Office Support Site Visit Report

WAHIB  
MEDANAT  
consultant engineers



General view  
of the project  
site

(figure: 01 & 02)

(figure:01)



(figure:02)

2

\\SERVER\Date\F\PROJECTS FILES\368\Home  
office support Site Visits\October 2022\Done\11-  
22102022.docx  
Form # QP SUP 01-18, Rev.1





SKEP III Home Office Support Site Visit Report

WAHIB  
MEDANAT  
consultant engineers



The supervision team observed that the Contractor is in the process of replacing the broken interlock with new acceptable ones

(figure:03)



The team inspected the decorative plastering works at the boundary walls no. 05 and 06

(figure:04)

3

\\SERVER\Date\F\PROJECTS FILES\368\Home office support Site Visits\October 2022\Done\11-22102022.docx  
Form # QP SUP 01-18, Rev.1





SKEP III Home Office Support Site Visit Report

WAHIB  
MEDANAT  
consultant engineers



The team observed that the Contractor is fixing the waterproofing membrane for the roof shafts

(figure:05)



The team inspected the installation of stone benches at the southern side of the site

(figure:06)

4

## 14 | Manpower Logs

### 14.1 Um–Al Dananir Basic Mixed School– Balqa

### 14.2 Al Khansa’ Basic Mixed School– Balqa

### 14.3 Khadija Bint Khwailed Basic Mixed School– Balqa

- [https://docs.google.com/spreadsheets/d/e/2PACX-1vRhb3kACWDsQyMLkEo1fHErXhRbkUZ3WbB-IKbzD4hBxtBlxa8uu36eH4lIiBd\\_vBO68zCfvQ9pL3R/pubhtml](https://docs.google.com/spreadsheets/d/e/2PACX-1vRhb3kACWDsQyMLkEo1fHErXhRbkUZ3WbB-IKbzD4hBxtBlxa8uu36eH4lIiBd_vBO68zCfvQ9pL3R/pubhtml)

## 15 | Daily Plant and Equipment

### 15.1 Um–Al Dananir Basic Mixed School– Balqa

### 15.2 Al Khansa’ Basic Mixed School– Balqa

### 15.3 Khadija Bint Khwailed Basic Mixed School– Balqa

- [https://docs.google.com/spreadsheets/d/e/2PACX-1vOOSaidGCU7G20wax2X4legLui39ubZf6lft6Rv4Dz\\_RHwX1d2Wi4-P1E6lpOoEskBCU-fqHiRGyVB/pubhtml](https://docs.google.com/spreadsheets/d/e/2PACX-1vOOSaidGCU7G20wax2X4legLui39ubZf6lft6Rv4Dz_RHwX1d2Wi4-P1E6lpOoEskBCU-fqHiRGyVB/pubhtml)

## 16 | Lab-test Results Tracking Log

### 16.1 Um-Al Dananir Basic Mixed School- Balqa

### 16.2 Al Khansa' Basic Mixed School- Balqa

### 16.3 Khadija Bint Khwailed Basic Mixed School- Balqa

- ❑ [https://docs.google.com/spreadsheets/d/e/2PACX-1vRVm0-kgH-1kJik8dVDcpEkebKePTUxcVGA6KRito\\_jAl6VxO1mZaWIUZMwQAUJ4J3XOUInm6E92B9o/pubhtml](https://docs.google.com/spreadsheets/d/e/2PACX-1vRVm0-kgH-1kJik8dVDcpEkebKePTUxcVGA6KRito_jAl6VxO1mZaWIUZMwQAUJ4J3XOUInm6E92B9o/pubhtml)

### 16.4 Comments on Laboratory Testing

The laboratory testing for various materials continued and the involved laboratories are the approved laboratory "CORINTHI for Testing, Engineering and Consulting" and the "Royal Scientific Society" laboratories.

The testing was conducted on concrete samples, tiling, stones, plastering accessories and MEP materials.

Most of the materials passed the requirements of specifications. In the cases where the material did not pass, the Contractor was requested to replace the representative quantity of the said material and re-testing was then conducted on the new material.

## 17 | Obstacles Log (Site Obstacles)

- ❑ [https://docs.google.com/spreadsheets/d/e/2PACX-1vQigC\\_iTXaMemMSQBxvtCZ7Zb8WVnHUGi1KHqEE-xU5\\_huDecui4JY\\_flo8K\\_GXlaLmnlvMZdzfc1r7/pubhtml?gid=0&single=true](https://docs.google.com/spreadsheets/d/e/2PACX-1vQigC_iTXaMemMSQBxvtCZ7Zb8WVnHUGi1KHqEE-xU5_huDecui4JY_flo8K_GXlaLmnlvMZdzfc1r7/pubhtml?gid=0&single=true)

## 17.1 Um Al Dananir Basic Mixed School – Al Balqa



Figure 1. . Encroaching on the site boundary

# SOLVED



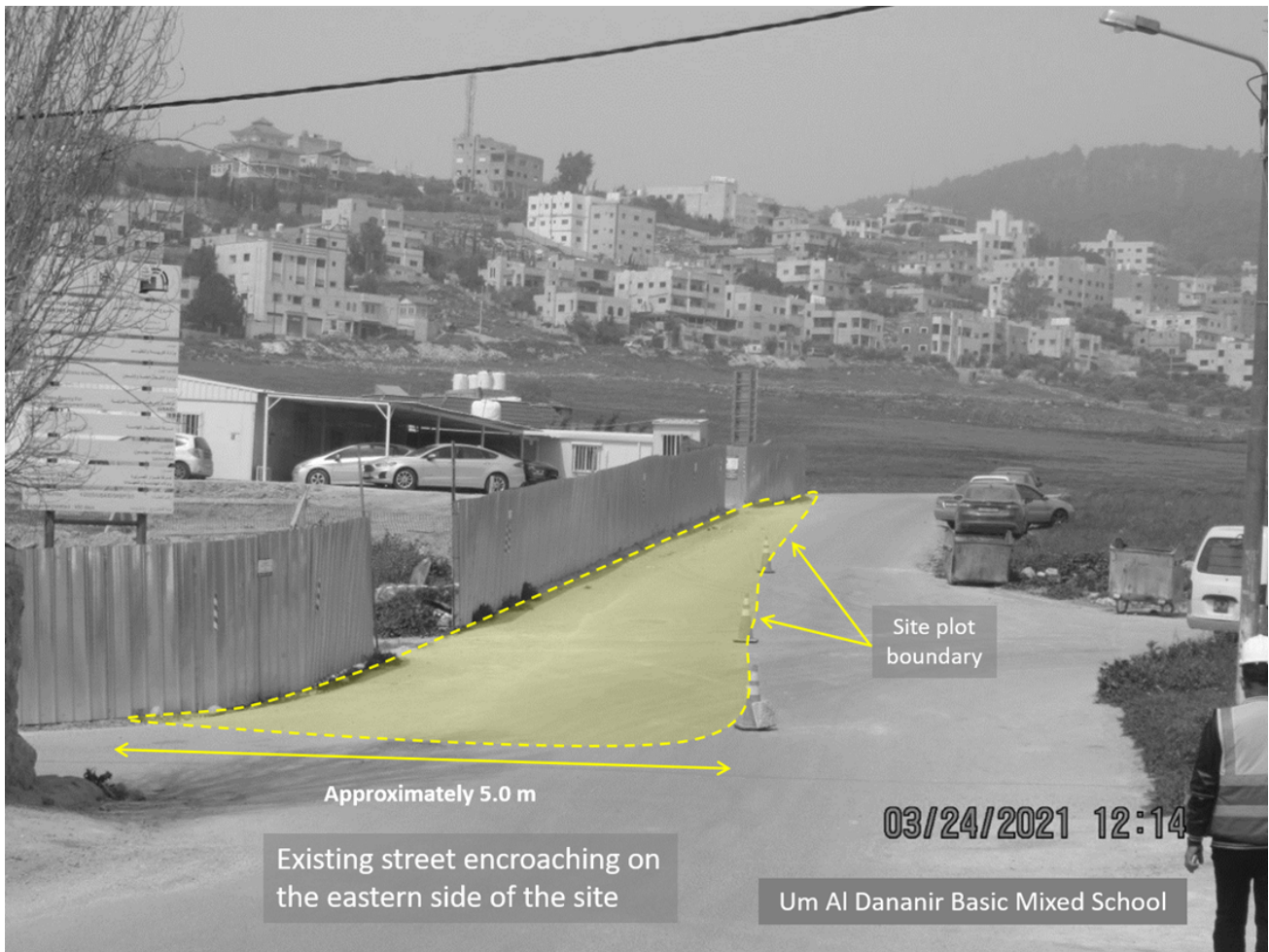


Figure 2. There is an encroachment of the existing street toward the site and this will affect the construction of the eastern boundary wall

**SOLVED**



Figure 3. There is an encroachment of the existing neighbor's building toward the site

**SOLVED**

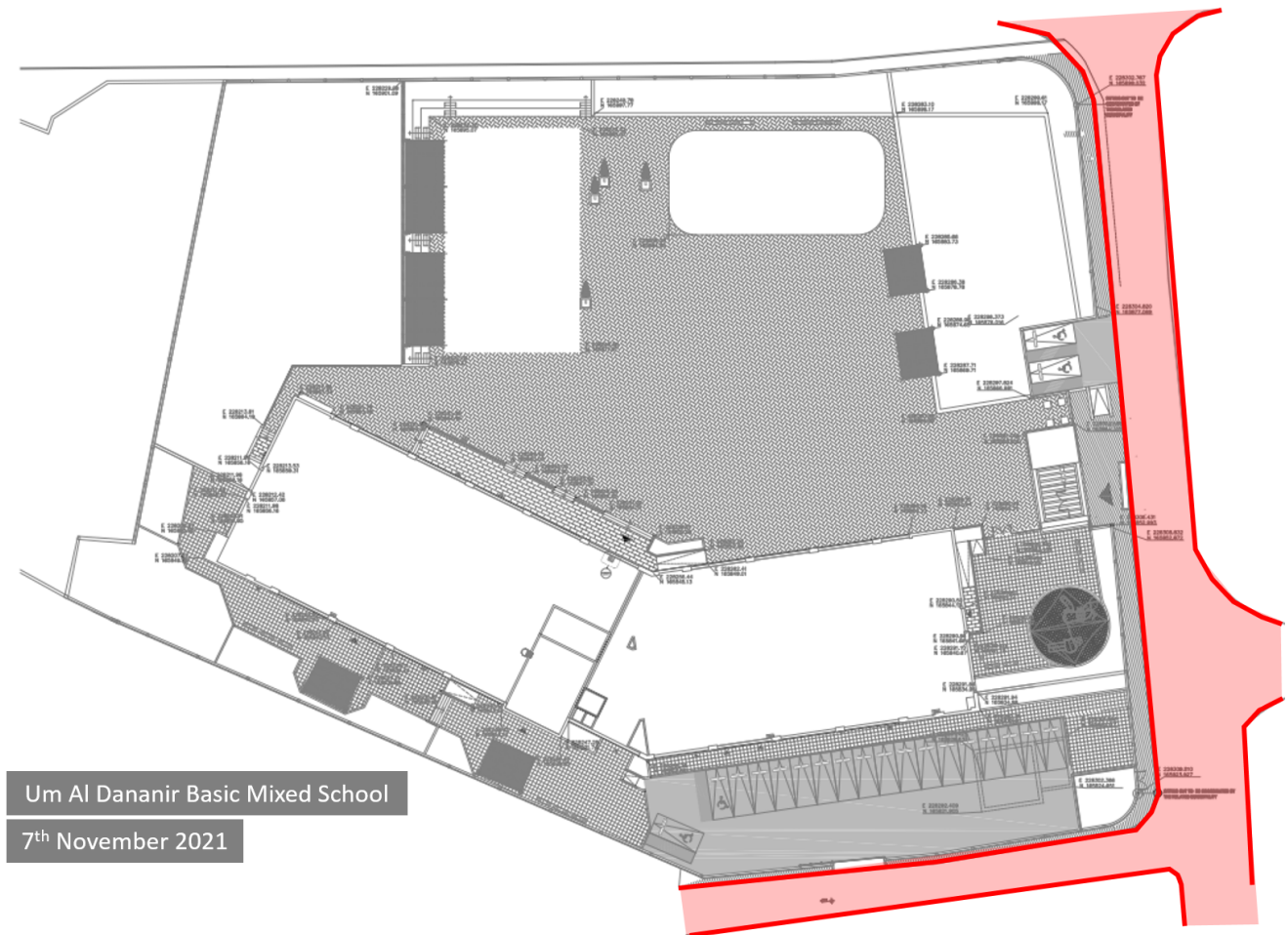


Figure 4 .The problem has been **solved** and a modified site plan drawings were issued



## 17.2 Khadija Bint Khwailed Basic Mixed School- Balqa

### Obstacles Log (Site Obstacles) SOLVED



### Khadija Bint Khwailed Basic Mixed - Balqa

There is an encroachment of the existing neighbour's building toward the site

# SOLVED



## 18 | Weather Condition

### 18.1 Um-Al Dananir Basic Mixed School- Balqa

- ❑ <https://docs.google.com/spreadsheets/d/e/2PACX-1vQwvkOsQNqNpCEii2MrPfd7QMO4o0DRQWz5SCAjUfQ0vrcdrok-1rFJym2sJ9gZEasPp0sQEbVTV-5I/pubhtml?gid=0&single=true>

### 18.2 Al Khansa' Basic Mixed School- Balqa

- ❑ <https://docs.google.com/spreadsheets/d/e/2PACX-1vQwvkOsQNqNpCEii2MrPfd7QMO4o0DRQWz5SCAjUfQ0vrcdrok-1rFJym2sJ9gZEasPp0sQEbVTV-5I/pubhtml?gid=295583832&single=true>

### 18.3 Khadija Bint Khwailed Basic Mixed School- Balqa

- ❑ <https://docs.google.com/spreadsheets/d/e/2PACX-1vQwvkOsQNqNpCEii2MrPfd7QMO4o0DRQWz5SCAjUfQ0vrcdrok-1rFJym2sJ9gZEasPp0sQEbVTV-5I/pubhtml?gid=1174180114&single=true>

## 19 | Selected Photos

### 19.1 Um-Aldananir Basic Mixed School- Al Balqa



Filling planters with agricultural soil

01/10/2022



Finishing electrical and plastering works at the main electrical room

10/10/2022





Insulation works for shafts' tops at the roof

17/10/2022



General view of the project site

25/10/2022

## 19.2 Al Khansa Basic Mixed School- Al Balqa



Finishing works  
at the sidewalks

01/10/2022



Starting works  
at the  
sidewalks next  
to the KG  
classrooms

04/10/2022





Planting trees  
and shrubs

15/10/2022



General view  
of the project  
site

16/10/2022

## 19.3 Khadija Bint Khwailed Basic Mixed School – Al-Shouna Al-Janobia



Parking area

01/10/2022



Installing  
window  
louvres for the  
shafts at the  
roof

09/10/2022



Core area

12/10/2022



## **20 | Location Links**

**20.1 Um Al Dananir Basic Mixed School – Balqa**

**20.2 Al Khansa'a Basic Mixed School – Balqa**

**20.3 Khadija Bint Khwailed Basic Mixed School – Balqa**

## **21 | Website Reports Links**

**21.1 Daily Reports**

**Updated daily**

**21.2 Weekly Reports**

**Updated weekly**

**21.3 Monthly Reports**

**Updated monthly**

**21.4 CMTO Inspection Reports**

**Updated weekly**

**21.5 Quality Reports**

**Updated weekly**



## 22 | Training

### 22.1 Training:

SKEPIII Site staff training sessions

We conduct one effective training session per week for both our staff and the contractor staff including fresh graduates. The training is conducted by our senior engineers from various disciplines and backgrounds. Our future plan for staff training is to host external trainers from the Ministry of Local Administration to talk about Municipalities regulations.



## 21.2 Training Sessions:

For More Details:

- Training Link:
- <https://www.medanat.site/training>