

School for Knowledge Economy Project (SKEP)

Phase III – Package 2

Monthly Progress Report

No. 25

October, 2022



**WAHIB
MEDANAT**
consultant engineers

☎ + 962 6 5821206
+ 962 6 5817847
+ 962 79 7650576

✉ + 962 6 5862357

✉ mail@medanat.com
info@medanat.com

www www.medanat.com

TÜV
AUSTRIA
HELLAS

No.: 20001210004621
Management System as per
EN ISO 9001 : 2015

TÜV
AUSTRIA
HELLAS

No.: 20152200003939
Management System as per
ISO 45001 : 2018

Table of Contents

	Page
Table of Contents	2
1 Project Particulars	5
1.1 Contract Main Information	5
1.2 Executive Summary	7
A- Hay Al-Iskan Basic School Mixed School – Jerash	7
B- Thahr Al-Sarow Basic School for Boys – Jerash	8
C- Jumana Bint Abi Taleb Basic Mixed School – Amman	9
2 Consultant Organisation Project Staff	10
3 Summary of Activities	13
3.1 Hay Al-Iskan Basic School Mixed School – Jerash	13
3.2 Thahr Al-Sarow Basic School for Boys- Jerash	13
3.3 Jumana Bint Abi-Taleb Basic Mixed School- Amman	13
3.4 Mobilization Tracking Log	13
3.5 Log of Activities	13
4 Project Time and Duration	14
5 Project Contract & V.O's	16
6 Cash Flow	17
7 Progress	19
7.1 Package 2 Average Progress	19
7.2 Hay Al Iskan Basic Mixed School – Jerash	25
7.3 Thahr Al-Sarow Basic School for Boys- Jerash	31
7.4 Jumana Bint Abi-Taleb Basic Mixed School- Amman	37
7.5 Engineer comments on work progress	43
7.6 Tracking Tasks in CPM	45
8 Submitted Materials	46
8.1 Summary of Submitted Materials	46
8.2 Shop Drawings & Submittal Tracking LOG	47
8.3 Materials Submittal Vendor List	47

9 Correspondence Tracking Logs	48
10 Non-conformance Report Tracking Log	48
10.1 HSE	48
10.2 QCs	48
Hay Al Iskan Basic Mixed School- Jerash	48
Thahr Al Sarow Basic School for Boys- Jerash	50
Jumana Bint Abi Taleb Basic Mixed School- Amman	51
10.3 NCRs	52
11 Request For Information Tracking Logs	53
11.1 RFIs-Designer	53
11.2 RFIs-Contractor	53
12 Site problems and Solutions	53
12.1 Hay Al Iskan Basic Mixed School-Jerash	53
12.2 Thahr Al Sarow Basic School for Boys-Jerash	54
12.3 Jumana Bint Abi Taleb Basic Mixed School- Amman	55
13 Meetings and Site Visits	56
13.1 Coordination & Progress Meetings	56
13.2 Site Visits	57
14 Manpower Logs	63
14.1 Hay Al Iskan Basic Mixed School – Jerash Progress	63
14.2 Thahr Al Sarow Basic School for Boys-Jerash	63
14.3 Jumana Bint Abi Taleb Basic Mixed School- Amman	63
□ Manpower Link	63
15 Daily Plant and Equipment	63
15.1 Hay Al Iskan Basic Mixed School – Jerash Progress	63
15.2 Thahr Al-Sarow Basic School for Boys- Jerash	63
15.3 Jumana Bint Abi-Taleb Basic Mixed School- Amman	63
16 Lab-test Results Tracking Log	64
16.1 Hay Al Iskan Basic Mixed School – Jerash	64
16.2 Thahr Al-Sarow Basic School for Boys- Jerash	64
16.3 Jumana Bint Abi-Taleb Basic Mixed School- Amman	64
16.4 Comments on Laboratory Testing	64

17 Obstacles Log (Site Obstacles)	64
17.1 Hay Al Iskan Basic Mixed School - Jerash	65
17.2 Thahr Al Sarow Basic School for Boys – Jerash SOLVED	68
18 Weather Condition	69
18.1 Hay Al Iskan Basic Mixed School – Jerash	69
18.2 Thahr Al-Sarow Basic School for Boys- Jerash	69
18.3 Jumana Bint Abi-Taleb Basic Mixed School- Amman	69
19 Selected Photos	70
19.1 Hay Al Iskan Basic Mixed School- Jerash	70
19.2 Thahr Al Sarow Basic School for Boys- Jerash	72
19.3 Jumana Bint Abi Taleb Basic Mixed School - Amman	73
20.1 Hay Al Iskan Basic Mixed School – Jerash	74
20.2 Thahr Al-Sarow Basic School for Boys - Jerash	74
20.3 Jumana Bint Abi-Taleb Basic Mixed School - Amman	74
21 Website Reports Links	74
21.1 Daily Reports	74
21.2 Weekly Reports	74
21.3 Monthly Reports	74
21.4 CMTO Inspection Reports	74
21.5 Quality Reports	74
22 Training	75
22.1 Training:	75
22.2 Training Sessions:	76

1 | Project Particulars

1.1 Contract Main Information

Contract Name:	School for Knowledge Economy Project (SKEP) Phase III – Package (2)
Owner:	Ministry of Education (MOE)
Employer:	Ministry of Public Works & Housing (MPWH)
Funded By:	United States Agency for International Development (USAID)
Consultant:	Wahib Medanat Consultant Engineers
Project Management:	Trigon Associates (CMTO)
Contractor:	Dijlah Establishment Constr. Contracting
Contract No.:	10/2019/USAID/SKEP/3/2
Commencement Date:	21/10/2020
Time for Substantial Completion of the Work:	Thahr Al-Sarow Basic School for Boys- Jerash: 450 Days
	Jumana Bint Abi-Taleb Basic Mixed School- Amman: 450 Days
	Hay Al Iskan Basic Mixed School – Jerash : 450 Days
Time to Complete the Work Including Punch List Items:	Within 14 Calendar days for each School from the date of taking over committee inspection
Contract Amount at Award:	8,314,983.735 JOD
Amount of Liquidated Damages:	Thahr Al Sarow Basic School for Boys- Jerash: 2000 JOD/ Day but not to exceed 15% of total amount for the School

	Jumana Bint Abi Taleb Basic Mixed School- Amman: 200 JOD/ Day but not to exceed 15% of total amount for the School
	Hay Al Iskan Basic Mixed School- Jerash: 2000 JOD/ Day but not to exceed 15% of the total amount for the School
Defects Liability Period:	(730) Calendar Days for all Civil & Electromechanical works from the date of Substantial Completion for each school including the maintenance of plantation works
Maintenance Guarantee for Defects Liability Period:	5% of the final Contract Sum
Percentage of Retention from Interim Payment Certificate:	10% of each payment
Limit of Retention Money:	5% of Contract Sum as amended
Period of Time for Payment to be made after Certification by the Engineer:	60 Calendar Days
Minimum Amount of Interim Payment Certificate:	JOD 300,000 (Three hundred thousand Jordanian Dinar) for all schools under the Package
Payment for Imported Materials	40% upon receipt of approved bill of lading and another 20% when stored on site to the Engineer's approval
Payment for Local Materials and Equipment	60% and restricted to cement and reinforcing steel when stored on site to the Engineer's approval.

1.2 Executive Summary

The Ministry of Education represented by the Ministry of Public Works & Housing has received a grant from USAID to finance the construction of:

School for Knowledge Economy Project (SKEP) – Phase III – Package (2)

The package consists of construction of three (3) Schools at different locations, two schools in Jerash and one School in Amman.

The project consists of construction of new classrooms, computer labs, laboratories, public utilities...etc., and site works for group of schools as shown in the Tender Documents, the Schools are:

A- Hay Al-Iskan Basic School Mixed School – Jerash

The project consists of a five floors building, with a total approximate area of 5420 m² in addition to site works as deemed in the drawings and BOQ.

Main Elements

Land Area =6322.090 m2			External Works = 4523 m2					no . of floor = 5		
Floor	F.F.L	Area (m2)	no.of classroom grade (1-3)	no.of classroom grade (4-10)	no . Of KG classroom	student for each classroom	student in floor	General Toilets	Mens Toilets	Womens Toilets
Basement	109.06	330.35	-	-	-	-	-	-	-	-
Ground	112.7	1799.75	-	-	2	24	48	3*7 m2 with HC toilet for each one AND child care toilet	1*9 m2	1*12 m2
First	116.34	1571.45	9	-	-	36	324	HC toilet , STAFF	23 m2	23 m2 with
second	119.98	1571.45	-	14	-	36	504	6 m2 HC toilet, STAFF	-	27*2 m2
Roof	123.47	105.1	-	-	-	-	-	-	-	-
External Works	Guard Room	22.4/34/65.9	-	-	-	-	-	-	-	-
Total		5378.1	25		-	-	876	-	32	89

□ Location Link:

[Hay Al Iskan Basic Mixed School – Jerash](#)

B- Thahr Al-Sarow Basic School for Boys – Jerash

The project consists of a five floors building, with a total approximate area of 4615 m² in addition to site works as deemed in the drawings and BOQ.

Main Elements

Land Area =4036 m2					External Works = 2790 m2			no . of floor = 4		
Floor	F.F.L	Area (m2)	no.of classroom grade (1-3)	no.of classroom grade (4-10)	no . Of KG classroom	student for each classroom	student in floor	General Toilets	Mens Toilets	Womens Toilets
Ground	106	1245.61	-	-	-	-	0	2*toilets (men & Women) 25 m2 and 2*HC toilets	8.5 m2 men toilet	16.5 m2 women toilet
First	109.64	1057.71	-	7	-	36	252	1*39.5 m2 toilet with HC toilet	-	-
Second	113.28	1057.71	-	7	-	36	252	1*39.5 m2 toilet with HC toilet	-	-
Third	116.92	1057.71	-	7	-	36	252	1*39.5 m2 toilet with HC toilet	-	-
Roof	120.56	91.44	-	-	-	-	-	-	-	-
Service Building	120.56	104.47	-	-	-	-	-	-	-	-
External Works	-	2685.9	-	-	-	-	-	-	-	-
Total		7300.55	21			-	756	143.5	8.5	16.2

Location Link:

[Thahr Al-Sarow Basic School for Boys](#)

C- Jumana Bint Abi Taleb Basic Mixed School – Amman

The project consists of a five floors building, with a total approximate area of 5460 m² in addition to site works deemed in the drawings and BOQ.

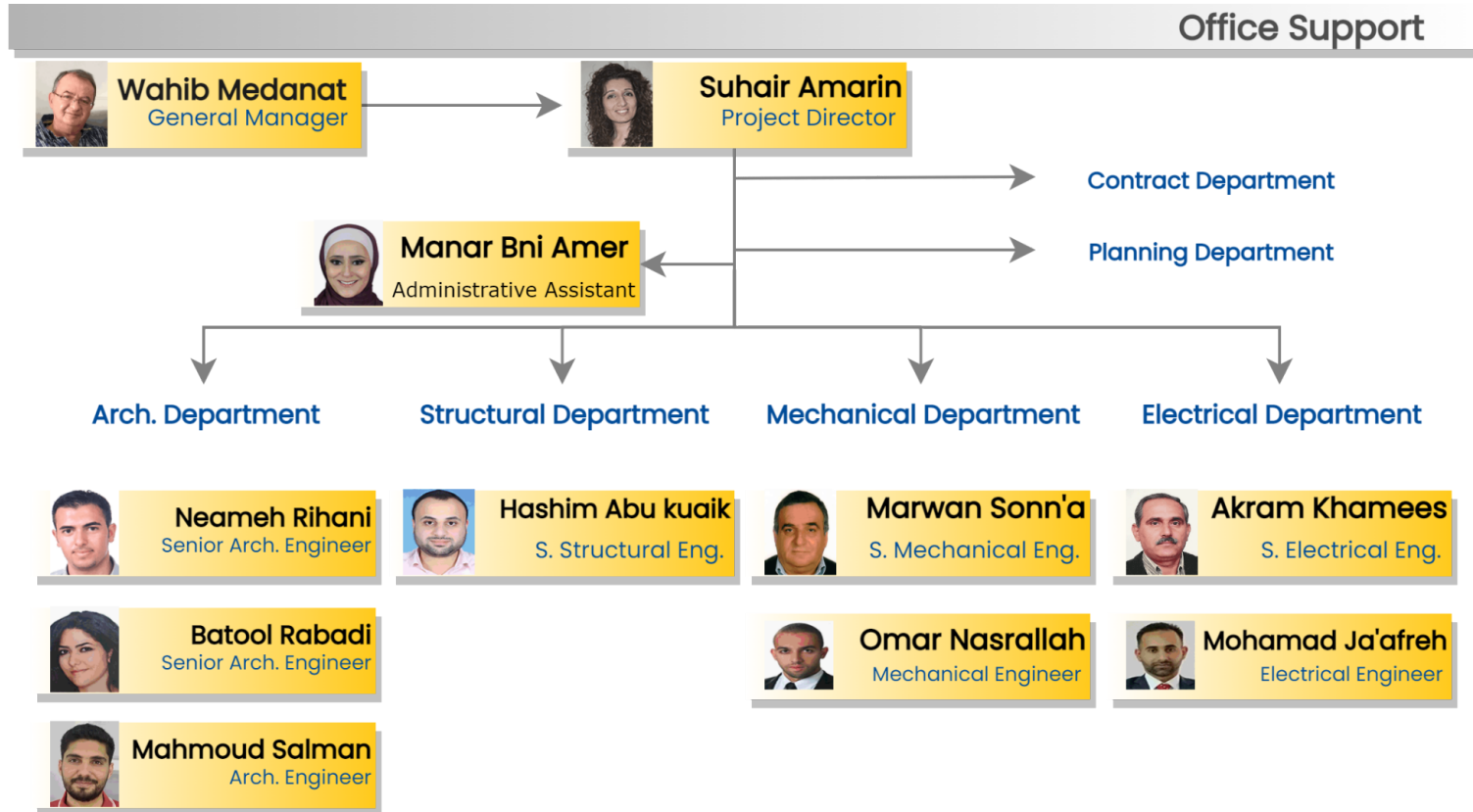
Main Elements

Jumana Bint Abi Taleb Basic Mixed School										
Land Area =7556 m2			External Works = 5665 m2					no . of floor = 4		
Floor	F.F.L	Area (m2)	no.of classroom grade (1-3)	no.of classroom grade (4-10)	no . Of KG classroom m	student for each classroom m	student in floor	General Toilets	Mens Toilets	Womens Toilets
Basement	95.05	293.87	-	-	-	-	-	-	-	-
Ground	98.65	1891.29	-	-	4	24	96	2*26 m2 with HC toilet for each one	1*11 m2	1*11 m2
First	102.29	1591.17	9	-	-	36	324	-	1*17 m2 with 6 m2 HC toilet	1*22 m2 with janitor.
Second	105.93	1591.17	-	14	-	36	504	-	-	1*40 m2 with 6 m2 HC toilet 1*28 m2
Roof	109.57	73.1	-	-	-	-	-	-	-	-
External Works	-	5665	-	-	-	-	-	-	-	-
Total		11105.6		27		-	924	52	34	107

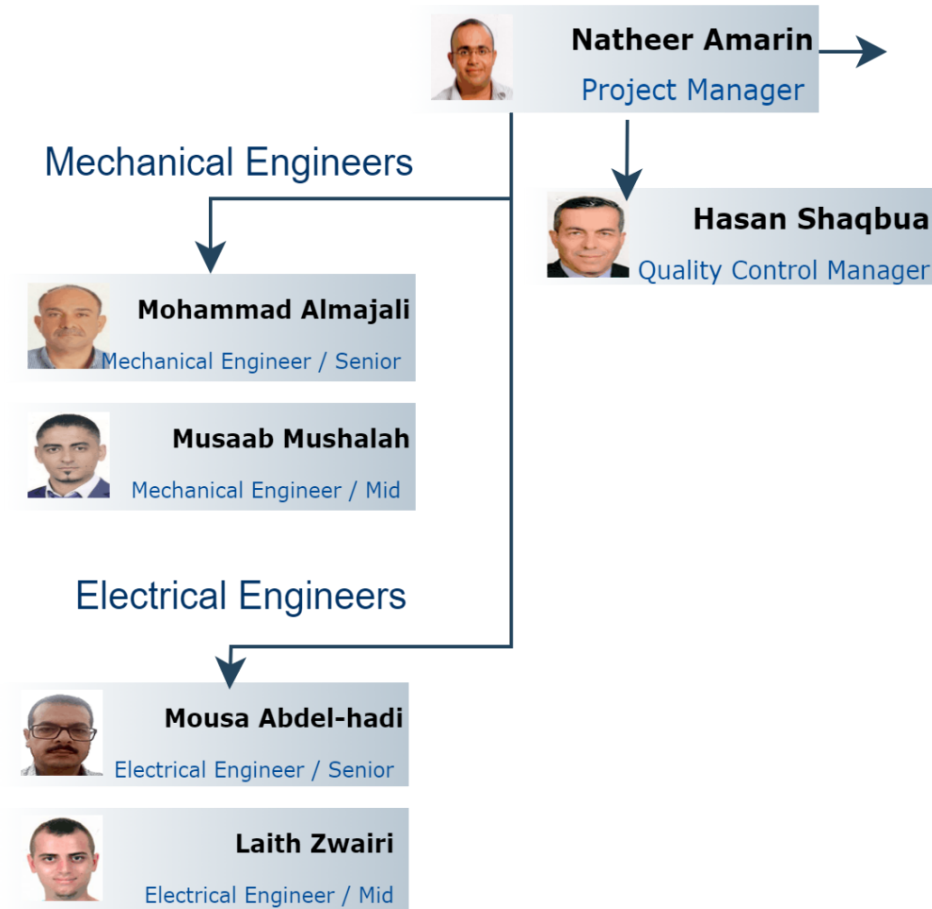
□ Location Link:

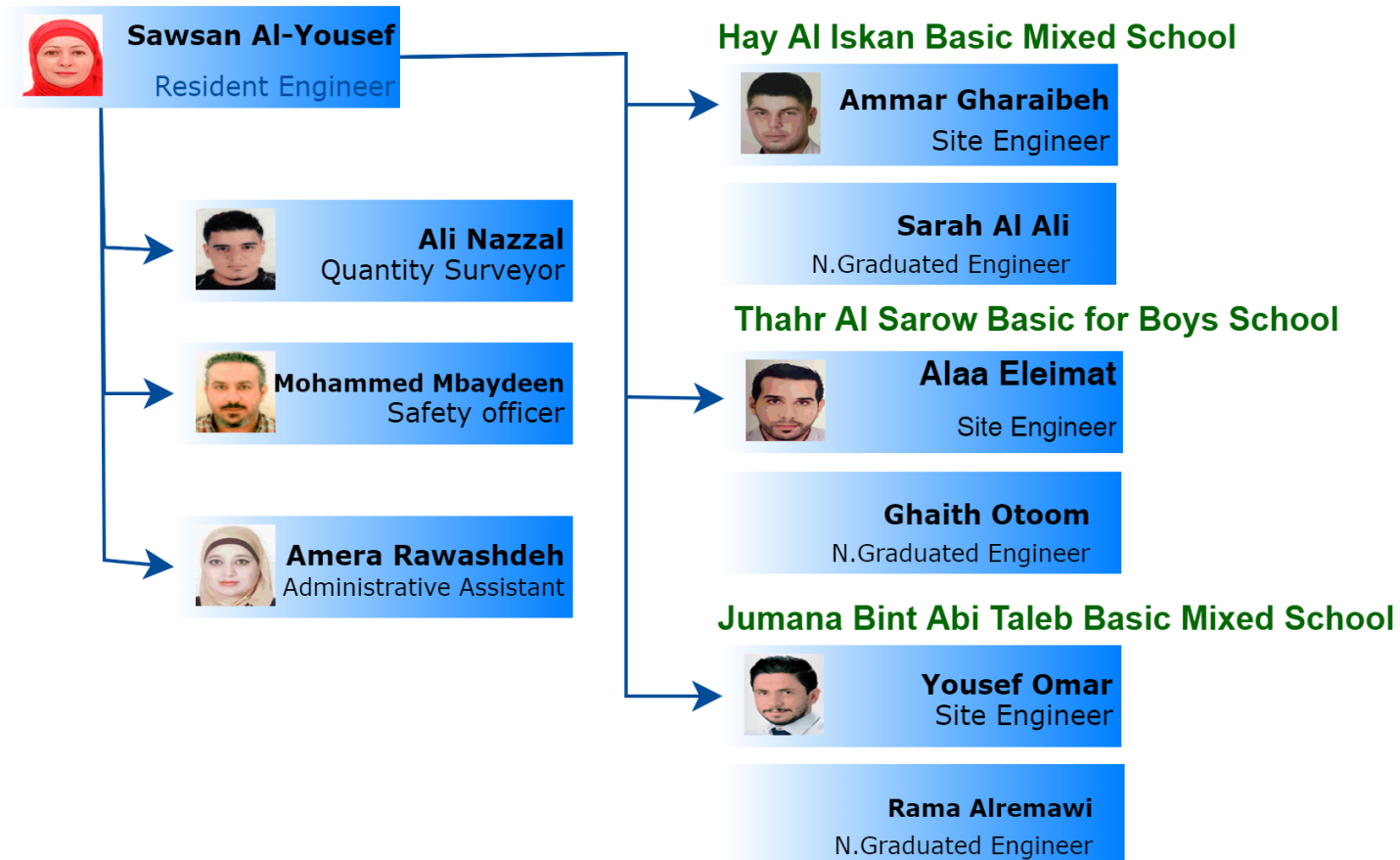
[Jumana Bint Abi-Taleb Basic Mixed School](#)

2 | Consultant Organisation Project Staff



Package 1,2





□ website Link: <https://www.medanat.site/skepiii-staff>

3 | Summary of Activities

3.1 Hay Al-Iskan Basic School Mixed School – Jerash

- https://docs.google.com/spreadsheets/d/e/2PACX-1vRtLV9UmywEwUV7fyFbmbNZR179H1tOZ_2yVKGqywKo9C_7XnNdyXOah2dt3_0lbT56g_kSQpwjtPhO/pubhtml?gid=0&single=true

3.2 Thahr Al-Sarow Basic School for Boys- Jerash

- https://docs.google.com/spreadsheets/d/e/2PACX-1vRtLV9UmywEwUV7fyFbmbNZR179H1tOZ_2yVKGqywKo9C_7XnNdyXOah2dt3_0lbT56g_kSQpwjtPhO/pubhtml?gid=834925315&single=true

3.3 Jumana Bint Abi-Taleb Basic Mixed School- Amman

- https://docs.google.com/spreadsheets/d/e/2PACX-1vRtLV9UmywEwUV7fyFbmbNZR179H1tOZ_2yVKGqywKo9C_7XnNdyXOah2dt3_0lbT56g_kSQpwjtPhO/pubhtml?gid=234544642&single=true

3.4 Mobilization Tracking Log

- https://docs.google.com/spreadsheets/d/e/2PACX-1vR0QRos64oBFSxPna2DWHgQx6sVDDrVtDiorCgZ1Fe4_eolby-3V2kFb1f9zQ_Feveoie3aOqLEYUK/pubhtml?gid=18990041&single=true

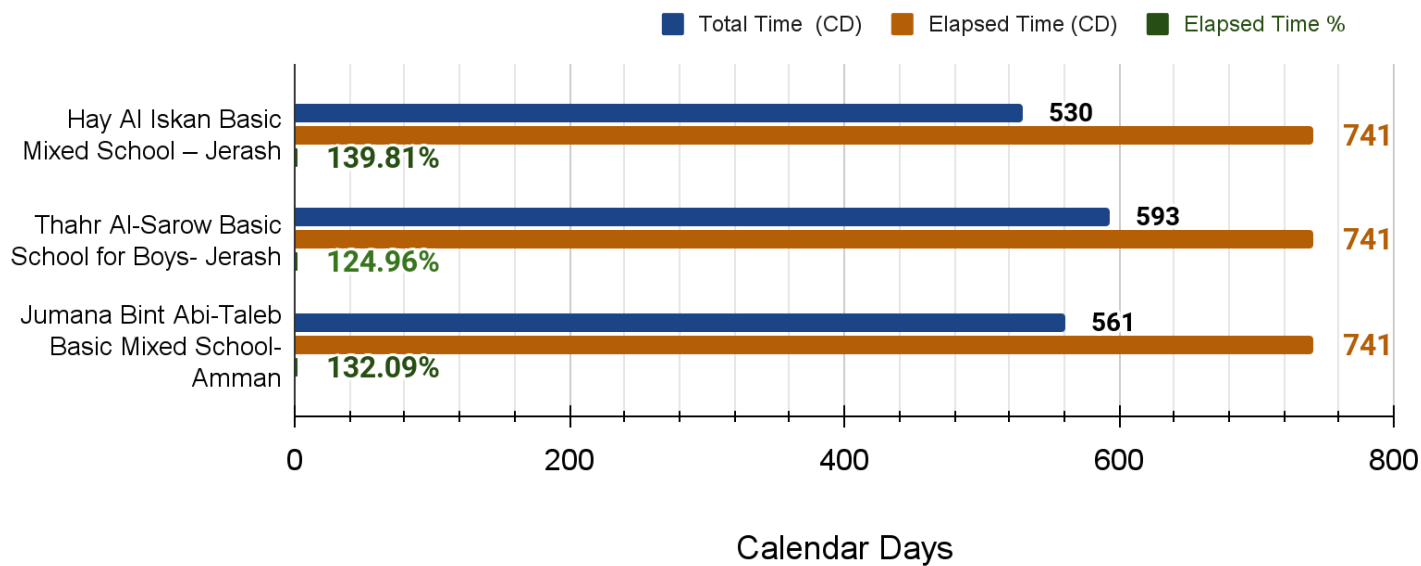
3.5 Log of Activities

- https://docs.google.com/spreadsheets/d/e/2PACX-1vR_jRzZ6JzoQRm1mfXIVs7lf22HO9x1_8RPI-EsZc_NbHqv4y0AjDvuG17cARDmZuQ-tlnMs3RoKWYO/pubhtml?gid=1004043320&single=true

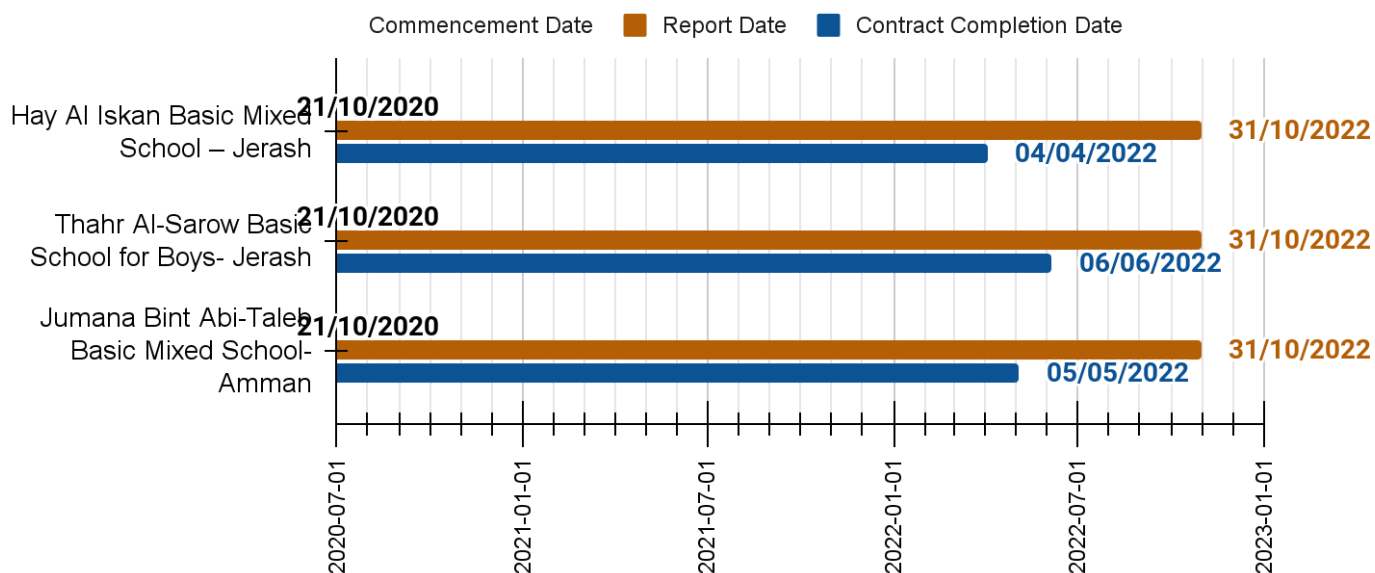
4 | Project Time and Duration

PGK 2 Report Date		2022-10-31			
	Site Name	Contract Duration (CD)	Approved Time Extension (CD)	Add. Time Extension (CD)	Total Time (CD)
21	Hay Al Iskan Basic Mixed School – Jerash	450	80	0	530
22	Thahr Al-Sarow Basic School for Boys- Jerash	450	143	0	593
23	Jumana Bint Abi-Taleb Basic Mixed School- Amman	450	111	0	561

SKEP III PKG 2 Time Chart



	Site Name	Commencement Date	Report Date
21	Hay Al Iskan Basic Mixed School – Jerash	2020-10-21	2022-10-31
22	Thahr Al-Sarow Basic School for Boys- Jerash	2020-10-21	2022-10-31
23	Jumana Bint Abi-Taleb Basic Mixed School- Amman	2020-10-21	2022-10-31



5 | Project Contract & V.O's

Package 2 Contract & V.O's

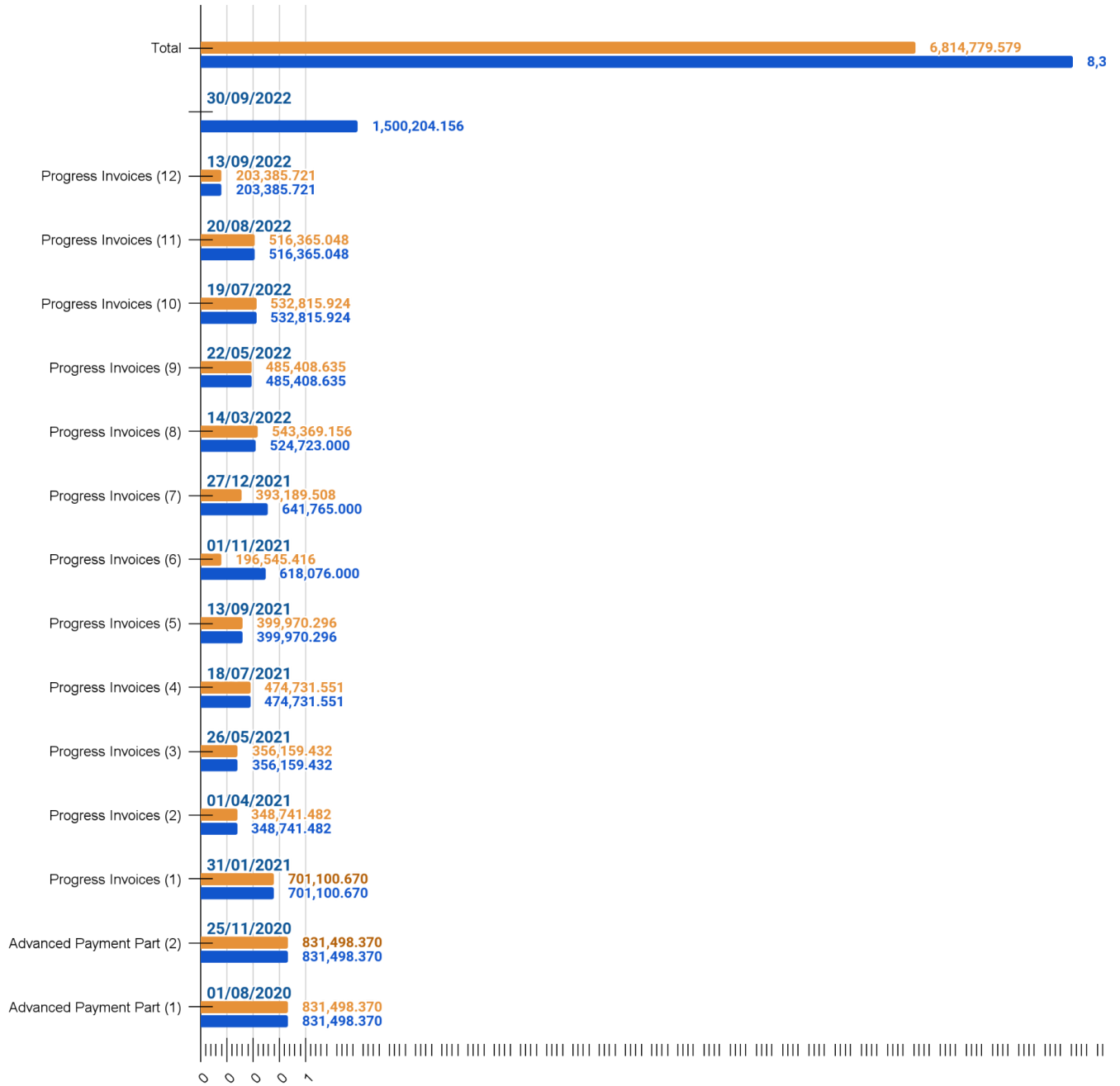
School Name	Contract Value JD		Provisional Sums JD		General Requirements JD		V.O.		Total Contract Value JD
	Original	After 1.5 % Deduction	Geotechnical Tests	Shoring	Value	After 1.5 % Deduction	V.O Description	Value JD	
Hay Al Iskan Basic Mixed School	2686848	2646545.28	11000	82500	45900	45211.5	Execution additional mechanical works/ Galvanised Pipes	2180	2791536.78
							Usp	4100	
Thahr Al Sarow Basic School	2329182	2294244.27	11000	55000	43450	42798.25	Cyclopean Concrete	4531	2437566.52
							Additional Quantities	29993	
Jumana Bint Abi Taleb Basic Mixed School	2936321	2892276.18	11000	55000	69450	68408.25	Cancellation of Sewage Connection Tank	-38739.065	2987945.365
Total	7952351	7833065.73	225500		158800	156418		2064.935	8217048.665
Provisional sum (Utilities)									100000
Total Amount									8317048.665

6 | Cash Flow

Package 2- Cash Flow			
Payment	Date of Payment	Actual Amount (JD)	Scheduled (JD)
Advanced Payment Part (1)	01/08/2020	831,498.370	831,498.370
Advanced Payment Part (2)	25/11/2020	831,498.370	831,498.370
Progress Invoices (1)	31/01/2021	701,100.670	701,100.670
Progress Invoices (2)	01/04/2021	348,741.482	348,741.482
Progress Invoices (3)	26/05/2021	356,159.432	356,159.432
Progress Invoices (4)	18/07/2021	474,731.551	474,731.551
Progress Invoices (5)	13/09/2021	399,970.296	399,970.296
Progress Invoices (6)	01/11/2021	196,545.416	618,076.000
Progress Invoices (7)	27/12/2021	393,189.508	641,765.000
Progress Invoices (8)	14/03/2022	543,369.156	524,723.000
Progress Invoices (9)	22/05/2022	485,408.635	485,408.635
Progress Invoices (10)	19/07/2022	532,815.924	532,815.924
Progress Invoices (11)	20/08/2022	516,365.048	516,365.048
Progress Invoices (12)	13/09/2022	203,385.721	203,385.721
			1,500,204.156
Total		6,814,779.579	8,314,983.735
% From Contract Value		81.96%	

Package 2- Cash Flow

Date of Payment ■ Actual Amount (JD) ■ Scheduled (JD)

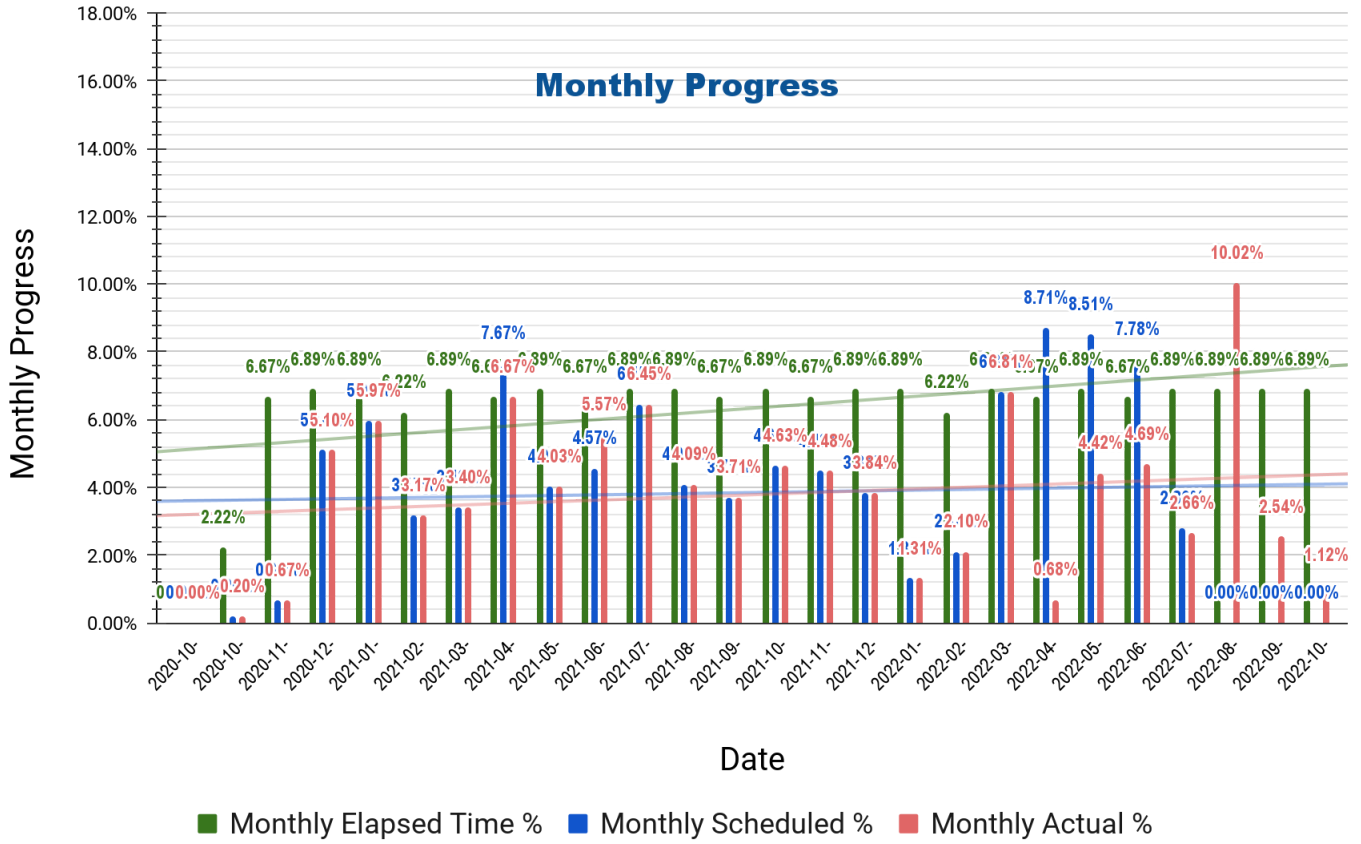


7 | Progress

7.1 Package 2 Average Progress

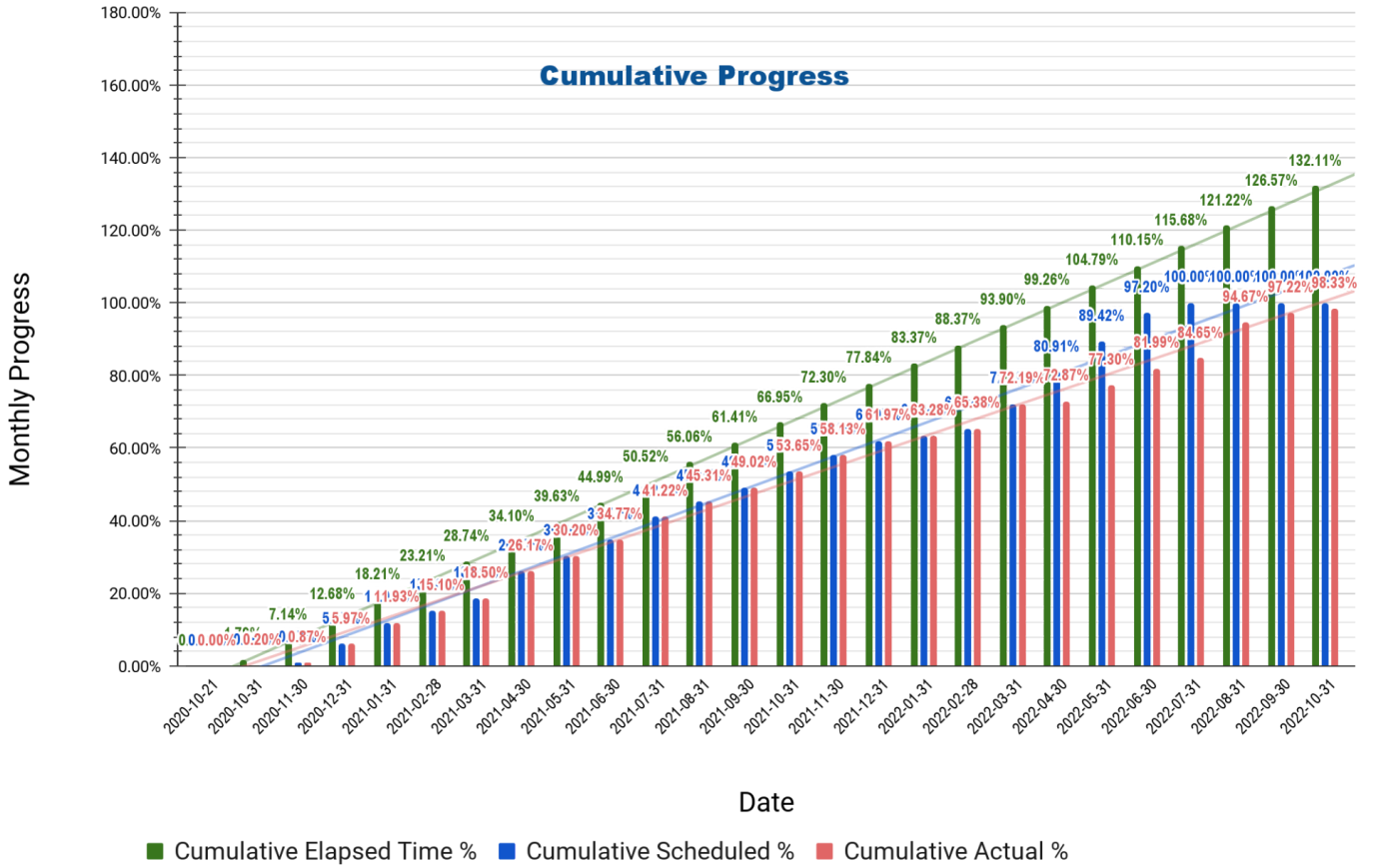
Package 2 Monthly Progress			
Date	Monthly Elapsed Time %	Monthly Scheduled %	Monthly Actual %
2020-10-21	0.00%	0.00%	0.00%
2020-10-31	2.22%	0.20%	0.20%
2020-11-30	6.67%	0.67%	0.67%
2020-12-31	6.89%	5.10%	5.10%
2021-01-31	6.89%	5.97%	5.97%
2021-02-28	6.22%	3.17%	3.17%
2021-03-31	6.89%	3.40%	3.40%
2021-04-30	6.67%	7.67%	6.67%
2021-05-31	6.89%	4.03%	4.03%
2021-06-30	6.67%	4.57%	5.57%
2021-07-31	6.89%	6.45%	6.45%
2021-08-31	6.89%	4.09%	4.09%
2021-09-30	6.67%	3.71%	3.71%
2021-10-31	6.89%	4.63%	4.63%
2021-11-30	6.67%	4.48%	4.48%
2021-12-31	6.89%	3.84%	3.84%
2022-01-31	6.89%	1.31%	1.31%
2022-02-28	6.22%	2.10%	2.10%
2022-03-31	6.89%	6.81%	6.81%
2022-04-30	6.67%	8.71%	0.68%
2022-05-31	6.89%	8.51%	4.42%
2022-06-30	6.67%	7.78%	4.69%
2022-07-31	6.89%	2.80%	2.66%
2022-08-31	6.89%	0.00%	10.02%
2022-09-30	6.89%	0.00%	2.54%
2022-10-31	6.89%	0.00%	1.12%

Package 2

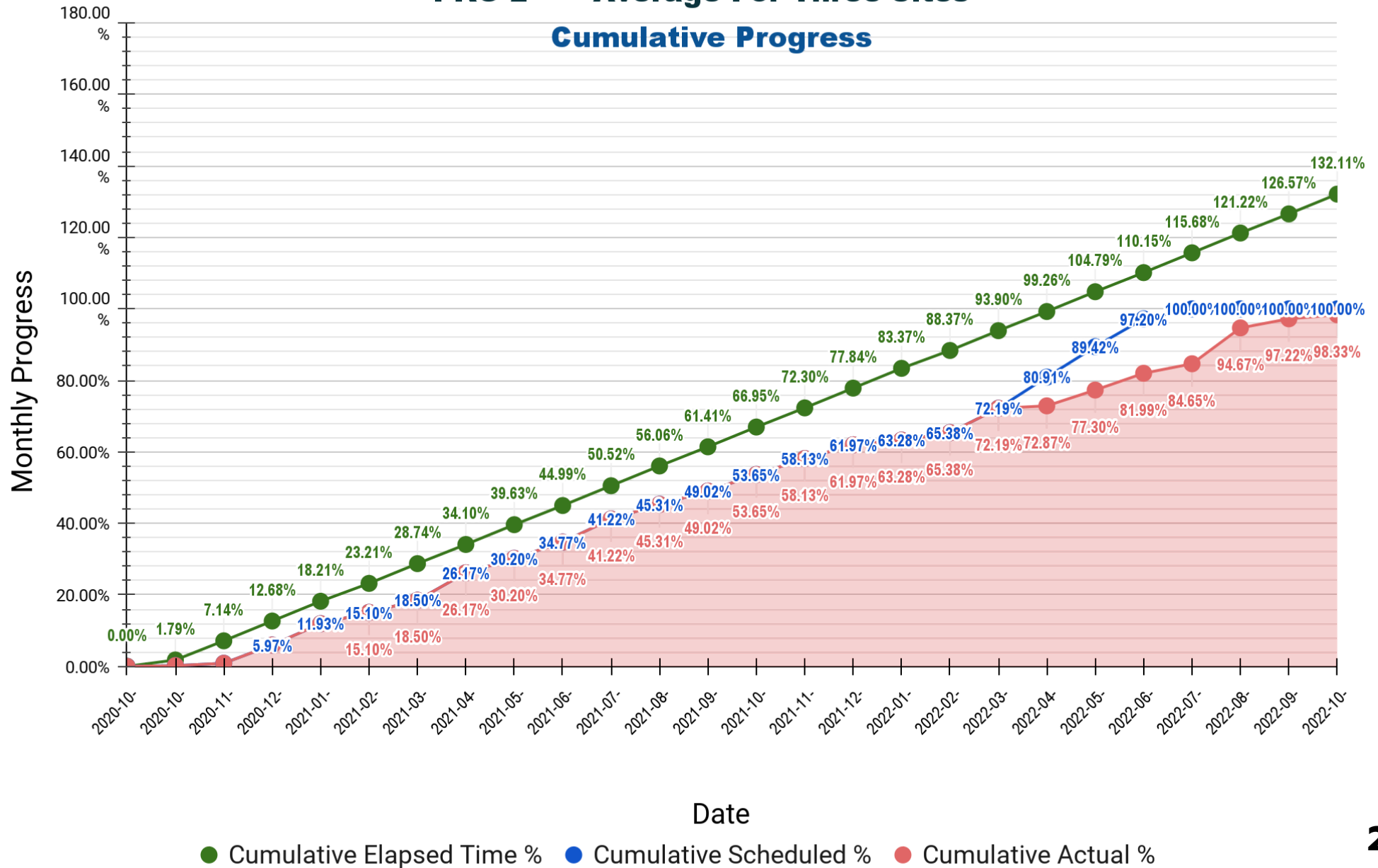


Package 2 Cumulative Progress			
Date	Cumulative Elapsed Time %	Cumulative Scheduled %	Cumulative Actual %
2020-10-21	0.00%	0.00%	0.00%
2020-10-31	1.79%	0.20%	0.20%
2020-11-30	7.14%	0.87%	0.87%
2020-12-31	12.68%	5.97%	5.97%
2021-01-31	18.21%	11.93%	11.93%
2021-02-28	23.21%	15.10%	15.10%
2021-03-31	28.74%	18.50%	18.50%
2021-04-30	34.10%	26.17%	26.17%
2021-05-31	39.63%	30.20%	30.20%
2021-06-30	44.99%	34.77%	34.77%
2021-07-31	50.52%	41.22%	41.22%
2021-08-31	56.06%	45.31%	45.31%
2021-09-30	61.41%	49.02%	49.02%
2021-10-31	66.95%	53.65%	53.65%
2021-11-30	72.30%	58.13%	58.13%
2021-12-31	77.84%	61.97%	61.97%
2022-01-31	83.37%	63.28%	63.28%
2022-02-28	88.37%	65.38%	65.38%
2022-03-31	93.90%	72.19%	72.19%
2022-04-30	99.26%	80.91%	72.87%
2022-05-31	104.79%	89.42%	77.30%
2022-06-30	110.15%	97.20%	81.99%
2022-07-31	115.68%	100.00%	84.65%
2022-08-31	121.22%	100.00%	94.67%
2022-09-30	126.57%	100.00%	97.22%
2022-10-31	132.11%	100.00%	98.33%

PKG 2 Average For Three Sites

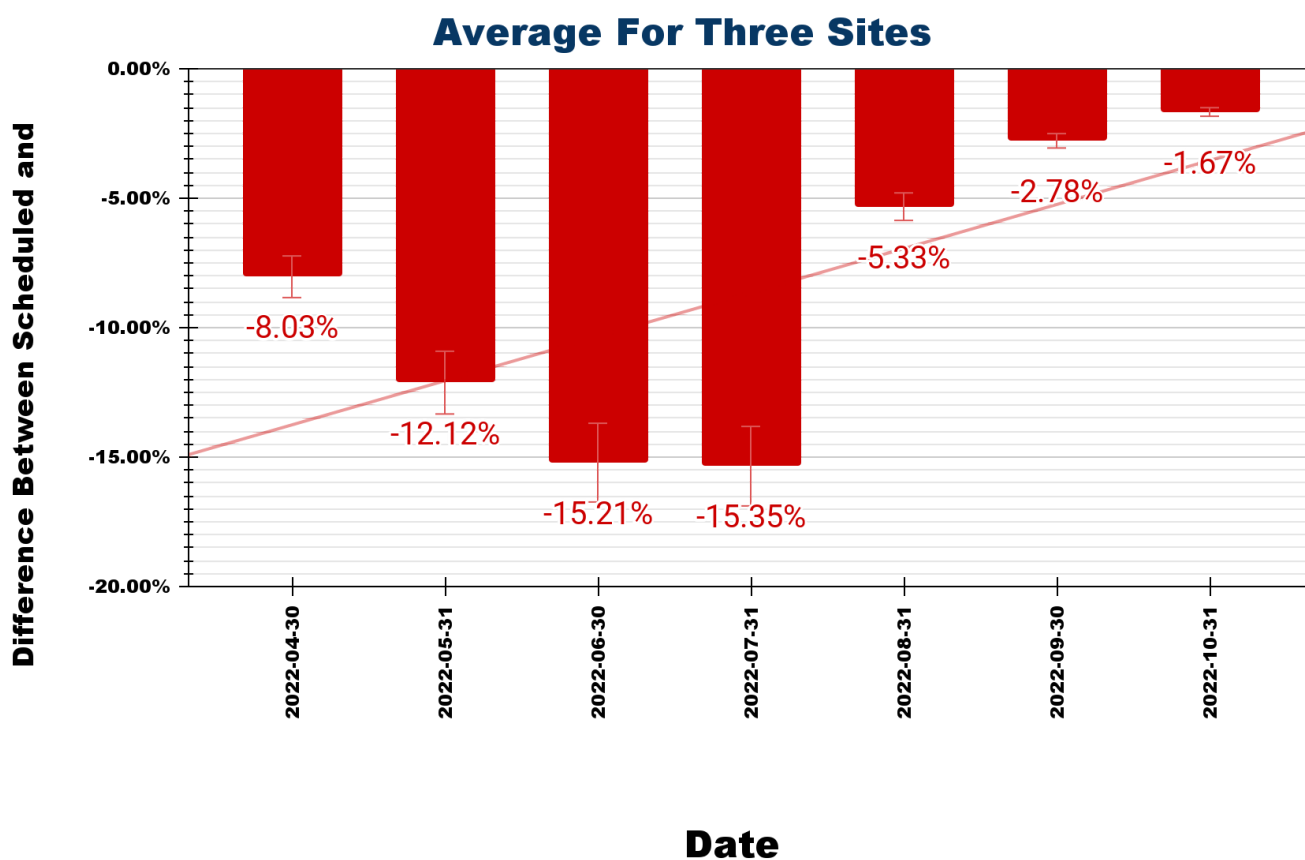


PKG 2 Average For Three Sites Cumulative Progress



Date	Difference Between Scheduled and Actual
2022-04-30	-8.03%
2022-05-31	-12.12%
2022-06-30	-15.21%
2022-07-31	-15.35%
2022-08-31	-5.33%
2022-09-30	-2.78%
2022-10-31	-1.67%

PKG 2 Difference: Scheduled Vs. Actual

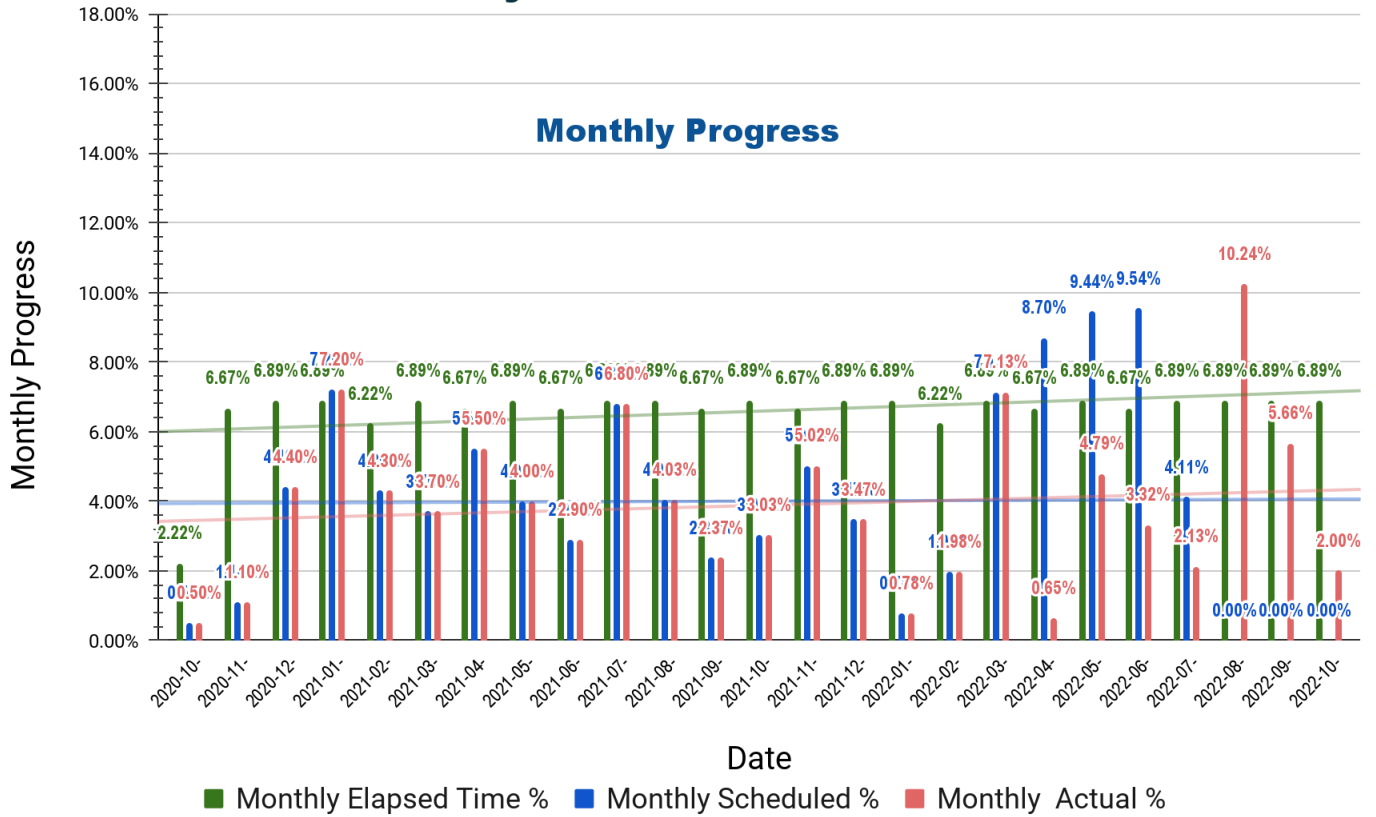


7.2 Hay Al Iskan Basic Mixed School – Jerash

Hay Al Iskan Basic mixed – Jerash Monthly Progress

Date	Monthly Elapsed Time %	Monthly Scheduled %	Monthly Actual %
2020-10-31	2.22%	0.50%	0.50%
2020-11-30	6.67%	1.10%	1.10%
2020-12-31	6.89%	4.40%	4.40%
2021-01-31	6.89%	7.20%	7.20%
2021-02-28	6.22%	4.30%	4.30%
2021-03-31	6.89%	3.70%	3.70%
2021-04-30	6.67%	5.50%	5.50%
2021-05-31	6.89%	4.00%	4.00%
2021-06-30	6.67%	2.90%	2.90%
2021-07-31	6.89%	6.80%	6.80%
2021-08-31	6.89%	4.03%	4.03%
2021-09-30	6.67%	2.37%	2.37%
2021-10-31	6.89%	3.03%	3.03%
2021-11-30	6.67%	5.02%	5.02%
2021-12-31	6.89%	3.47%	3.47%
2022-01-31	6.89%	0.78%	0.78%
2022-02-28	6.22%	1.98%	1.98%
2022-03-31	6.89%	7.13%	7.13%
2022-04-30	6.67%	8.70%	0.65%
2022-05-31	6.89%	9.44%	4.79%
2022-06-30	6.67%	9.54%	3.32%
2022-07-31	6.89%	4.11%	2.13%
2022-08-31	6.89%	0.00%	10.24%
2022-09-30	6.89%	0.00%	5.66%
2022-10-31	6.89%	0.00%	2.00%

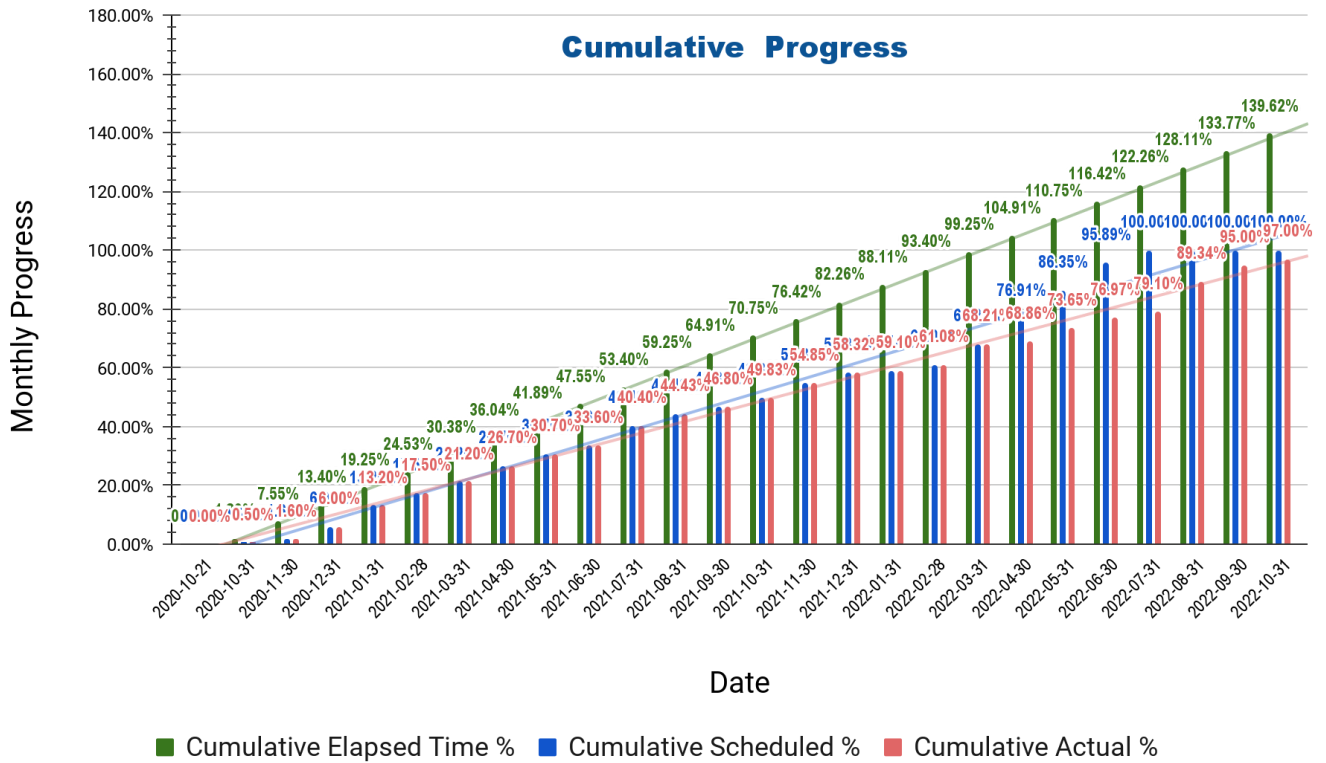
PKG 2 Hay Al Iskan Basic mixed - Jerash



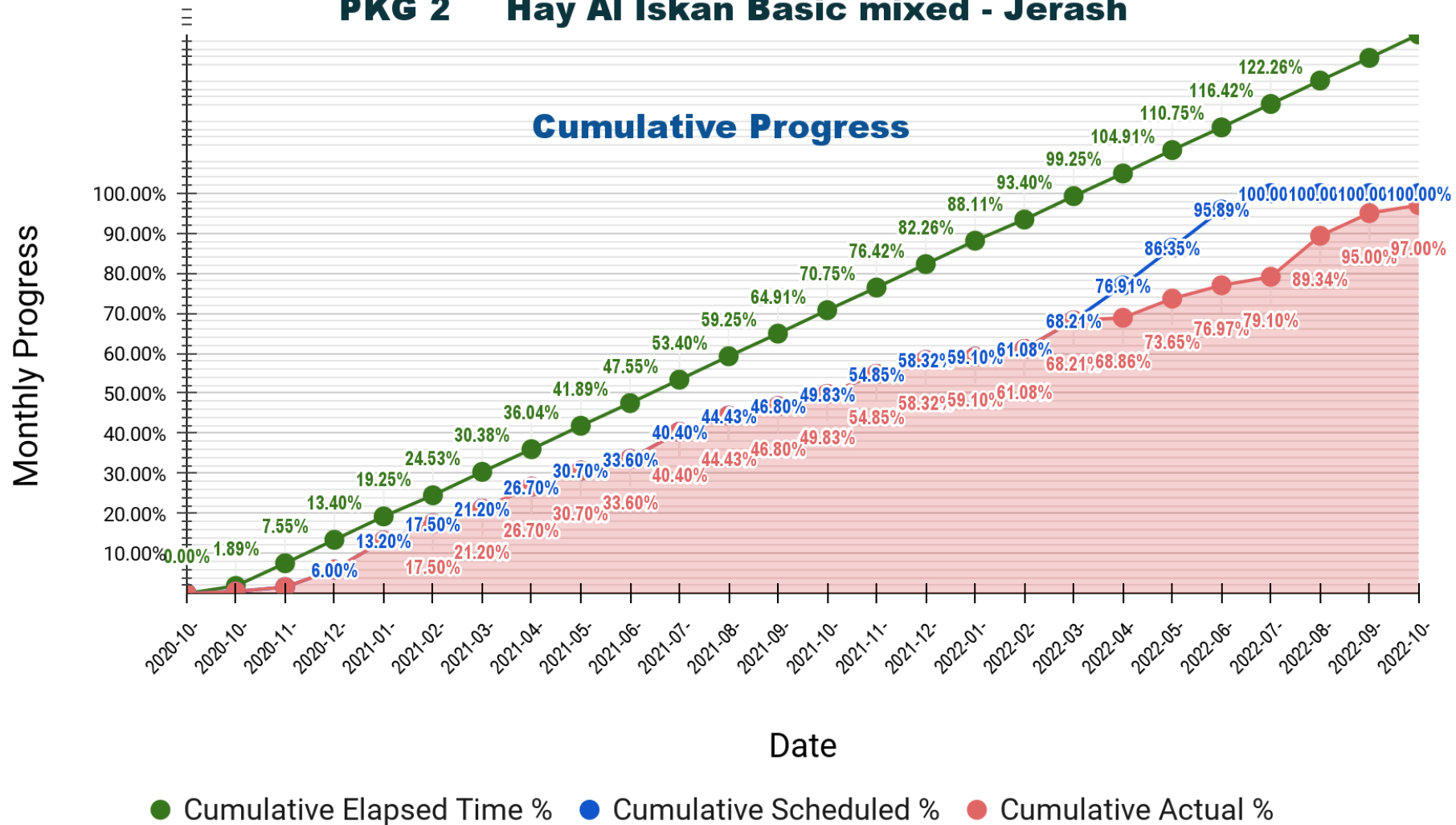
Hay Al Iskan Basic mixed - Jerash Cumulative Progress

Date	Cumulative Elapsed Time %	Cumulative Scheduled %	Cumulative Actual %
2020-10-21	0.00%	0.00%	0.00%
2020-10-31	1.89%	0.50%	0.50%
2020-11-30	7.55%	1.60%	1.60%
2020-12-31	13.40%	6.00%	6.00%
2021-01-31	19.25%	13.20%	13.20%
2021-02-28	24.53%	17.50%	17.50%
2021-03-31	30.38%	21.20%	21.20%
2021-04-30	36.04%	26.70%	26.70%
2021-05-31	41.89%	30.70%	30.70%
2021-06-30	47.55%	33.60%	33.60%
2021-07-31	53.40%	40.40%	40.40%
2021-08-31	59.25%	44.43%	44.43%
2021-09-30	64.91%	46.80%	46.80%
2021-10-31	70.75%	49.83%	49.83%
2021-11-30	76.42%	54.85%	54.85%
2021-12-31	82.26%	58.32%	58.32%
2022-01-31	88.11%	59.10%	59.10%
2022-02-28	93.40%	61.08%	61.08%
2022-03-31	99.25%	68.21%	68.21%
2022-04-30	104.91%	76.91%	68.86%
2022-05-31	110.75%	86.35%	73.65%
2022-06-30	116.42%	95.89%	76.97%
2022-07-31	122.26%	100.00%	79.10%
2022-08-31	128.11%	100.00%	89.34%
2022-09-30	133.77%	100.00%	95.00%
2022-10-31	139.62%	100.00%	97.00%

PKG 2 Hay Al Iskan Basic mixed - Jerash



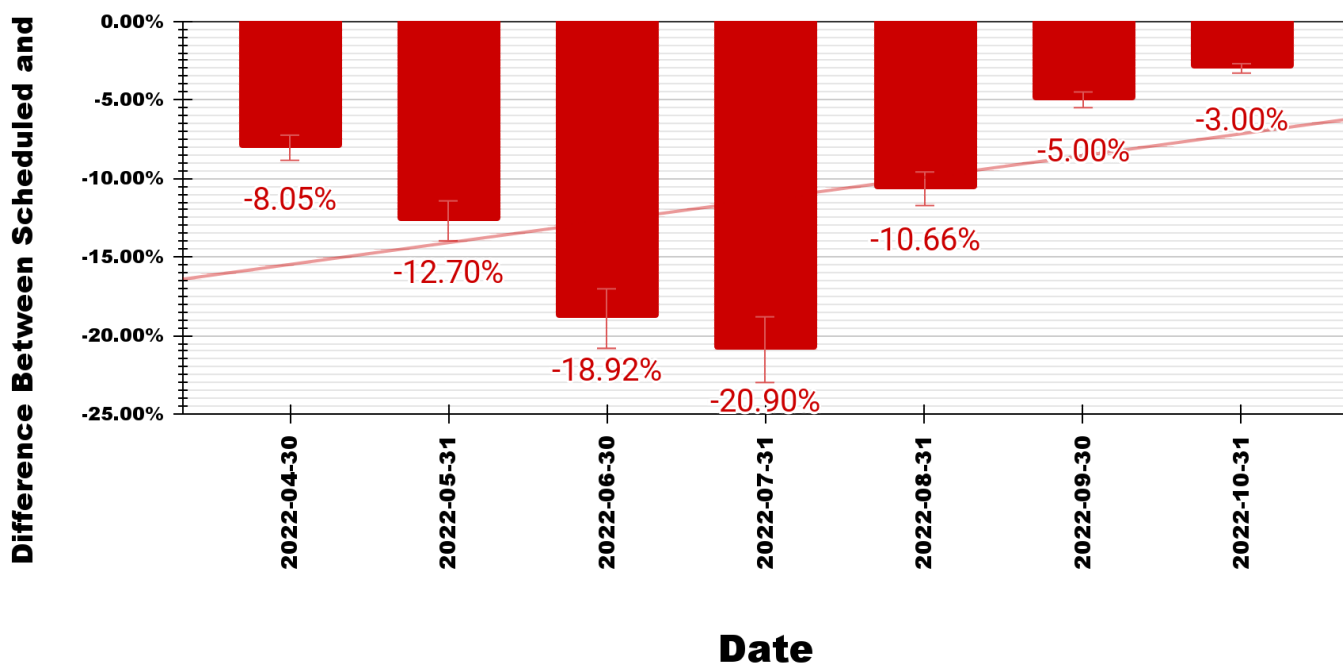
PKG 2 Hay Al Iskan Basic mixed - Jerash



Date	Difference Between Scheduled and Actual
2022-04-30	-8.05%
2022-05-31	-12.70%
2022-06-30	-18.92%
2022-07-31	-20.90%
2022-08-31	-10.66%
2022-09-30	-5.00%
2022-10-31	-3.00%

PKG 2 Difference: Scheduled Vs. Actual

Hay Al Iskan Basic mixed - Jerash



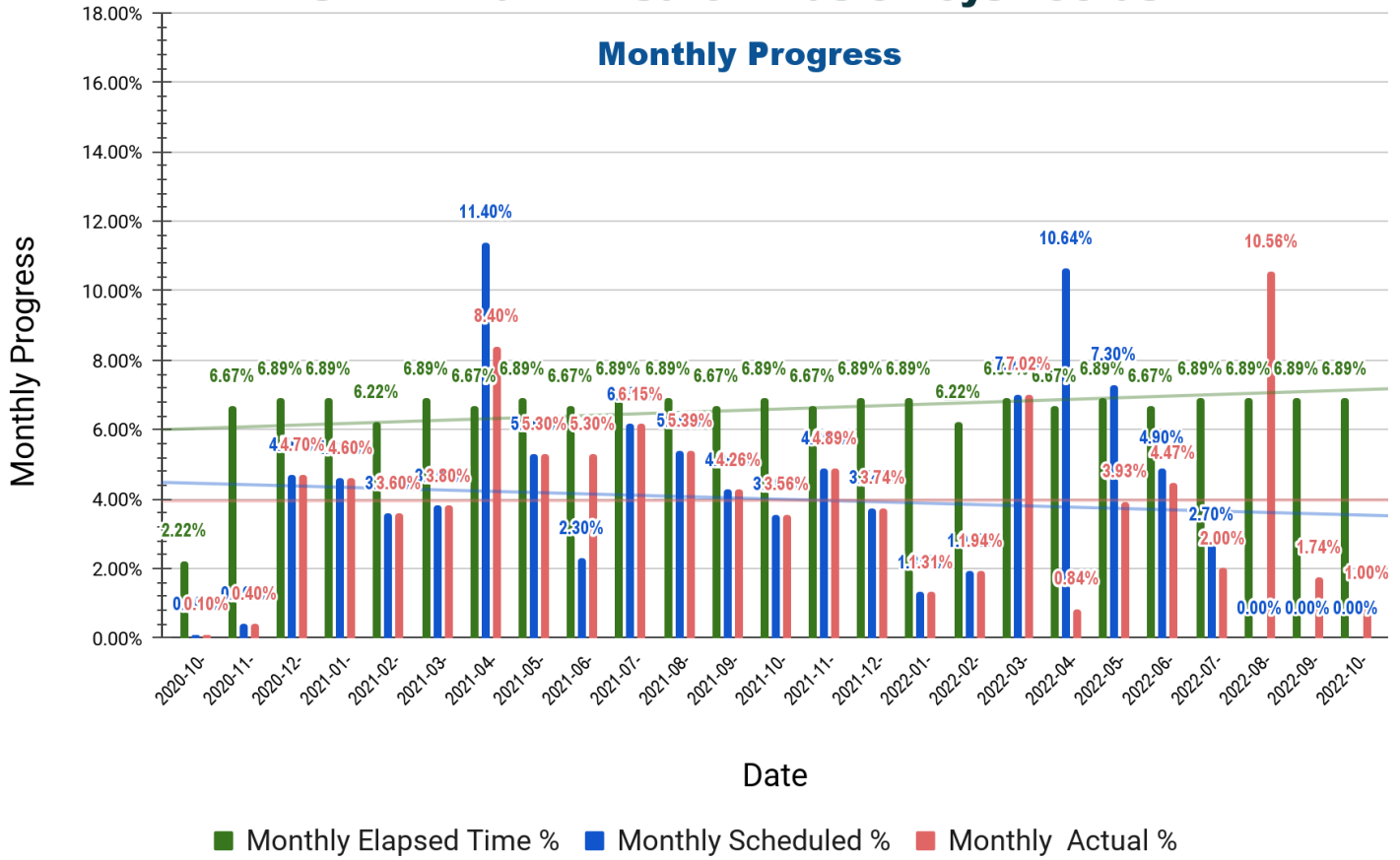
7.3 Thahr Al-Sarow Basic School for Boys- Jerash

Thahr Al-Sarow Basic School for Boys- Jerash Monthly Progress

Date	Monthly Elapsed Time %	Monthly Scheduled %	Monthly Actual %
2020-10-31	2.22%	0.10%	0.10%
2020-11-30	6.67%	0.40%	0.40%
2020-12-31	6.89%	4.70%	4.70%
2021-01-31	6.89%	4.60%	4.60%
2021-02-28	6.22%	3.60%	3.60%
2021-03-31	6.89%	3.80%	3.80%
2021-04-30	6.67%	11.40%	8.40%
2021-05-31	6.89%	5.30%	5.30%
2021-06-30	6.67%	2.30%	5.30%
2021-07-31	6.89%	6.15%	6.15%
2021-08-31	6.89%	5.39%	5.39%
2021-09-30	6.67%	4.26%	4.26%
2021-10-31	6.89%	3.56%	3.56%
2021-11-30	6.67%	4.89%	4.89%
2021-12-31	6.89%	3.74%	3.74%
2022-01-31	6.89%	1.31%	1.31%
2022-02-28	6.22%	1.94%	1.94%
2022-03-31	6.89%	7.02%	7.02%
2022-04-30	6.67%	10.64%	0.84%
2022-05-31	6.89%	7.30%	3.93%
2022-06-30	6.67%	4.90%	4.47%
2022-07-31	6.89%	2.70%	2.00%
2022-08-31	6.89%	0.00%	10.56%
2022-09-30	6.89%	0.00%	1.74%
2022-10-31	6.89%	0.00%	1.00%

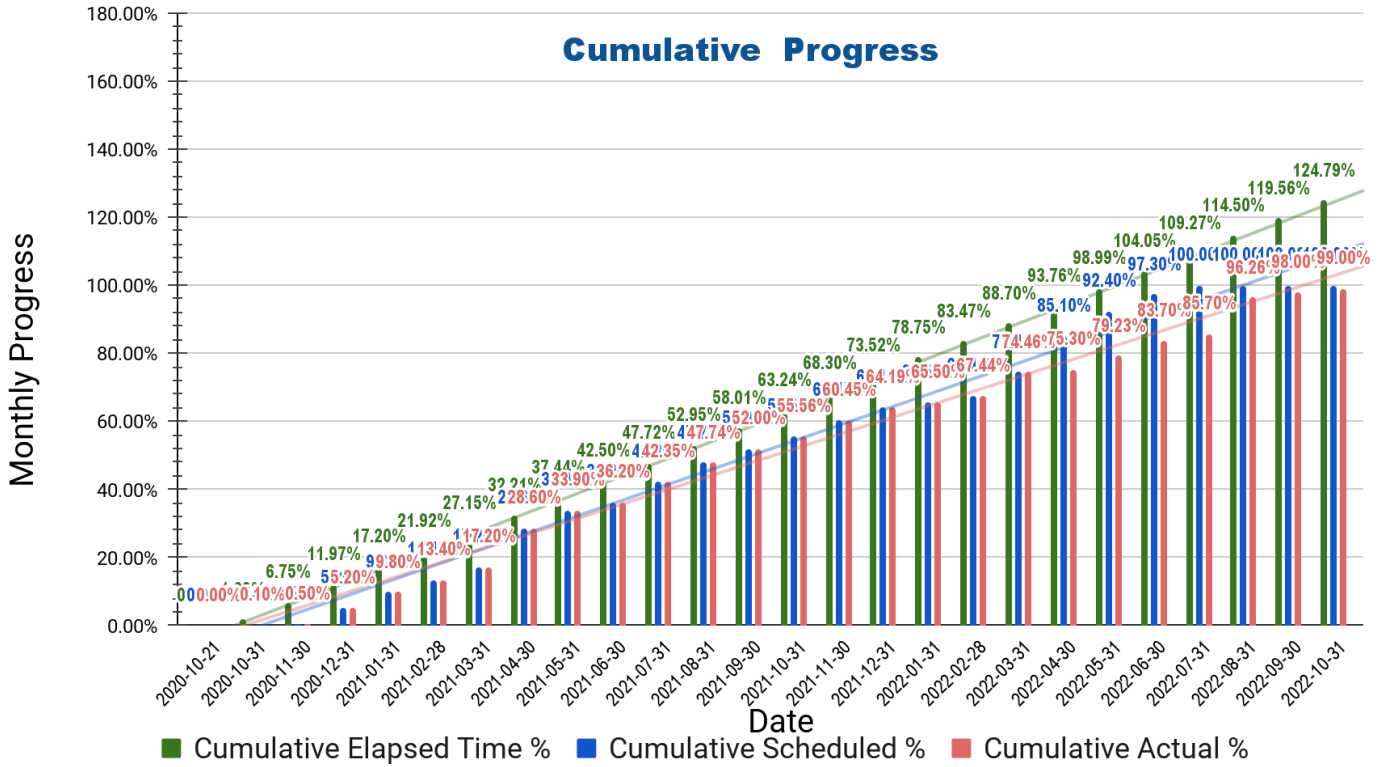
PKG 2 Thahr Al Sarow Basic Boys - Jerash

Monthly Progress



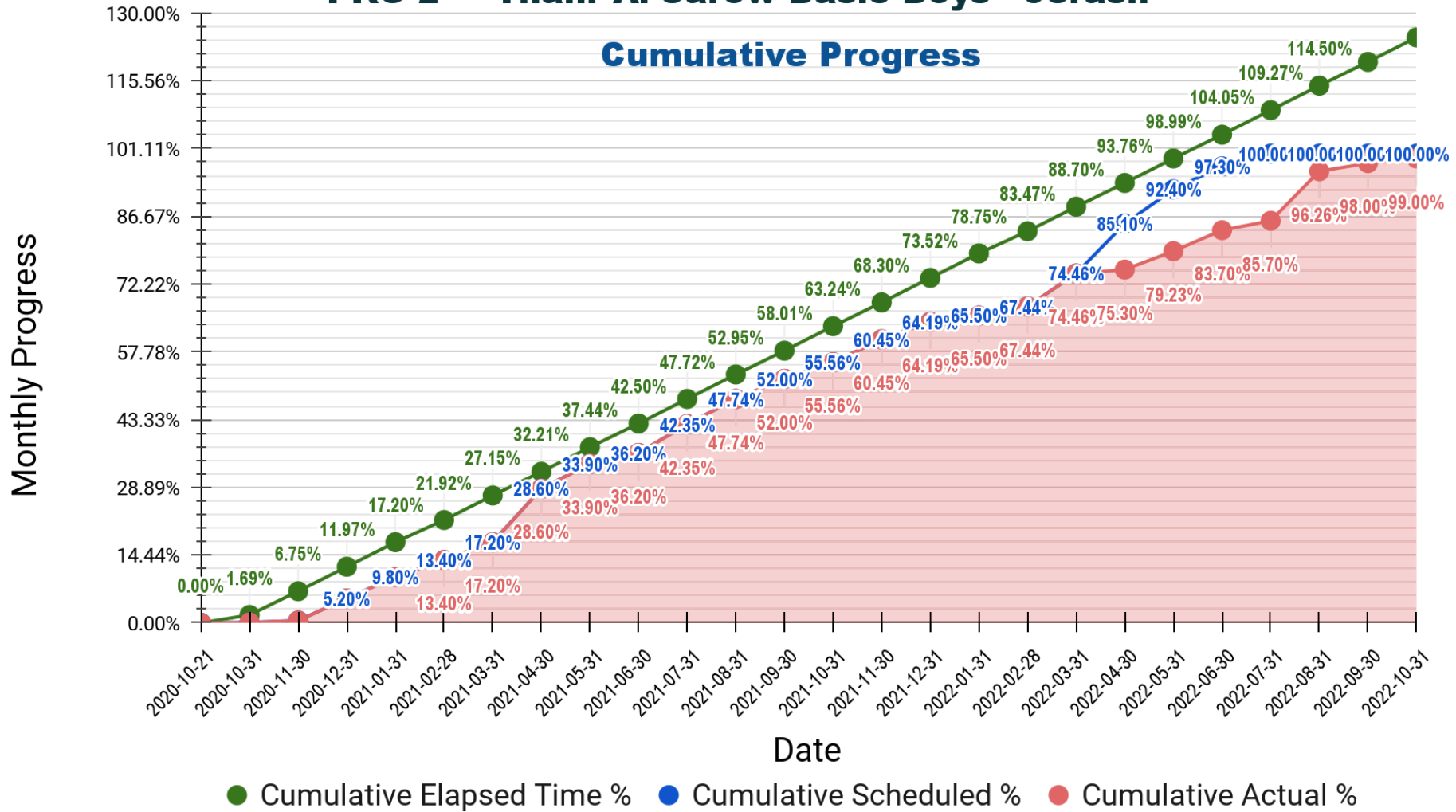
Thahr Al-Sarow Basic School for Boys- Jerash Cumulative Progress			
Date	Cumulative Elapsed Time %	Cumulative Scheduled %	Cumulative Actual %
2020-10-21	0.00%	0.00%	0.00%
2020-10-31	1.69%	0.10%	0.10%
2020-11-30	6.75%	0.50%	0.50%
2020-12-31	11.97%	5.20%	5.20%
2021-01-31	17.20%	9.80%	9.80%
2021-02-28	21.92%	13.40%	13.40%
2021-03-31	27.15%	17.20%	17.20%
2021-04-30	32.21%	28.60%	28.60%
2021-05-31	37.44%	33.90%	33.90%
2021-06-30	42.50%	36.20%	36.20%
2021-07-31	47.72%	42.35%	42.35%
2021-08-31	52.95%	47.74%	47.74%
2021-09-30	58.01%	52.00%	52.00%
2021-10-31	63.24%	55.56%	55.56%
2021-11-30	68.30%	60.45%	60.45%
2021-12-31	73.52%	64.19%	64.19%
2022-01-31	78.75%	65.50%	65.50%
2022-02-28	83.47%	67.44%	67.44%
2022-03-31	88.70%	74.46%	74.46%
2022-04-30	93.76%	85.10%	75.30%
2022-05-31	98.99%	92.40%	79.23%
2022-06-30	104.05%	97.30%	83.70%
2022-07-31	109.27%	100.00%	85.70%
2022-08-31	114.50%	100.00%	96.26%
2022-09-30	119.56%	100.00%	98.00%
2022-10-31	124.79%	100.00%	99.00%

PKG 2 Thahr Al Sarow Basic Boys - Jerash



PKG 2 Thahr Al Sarow Basic Boys - Jerash

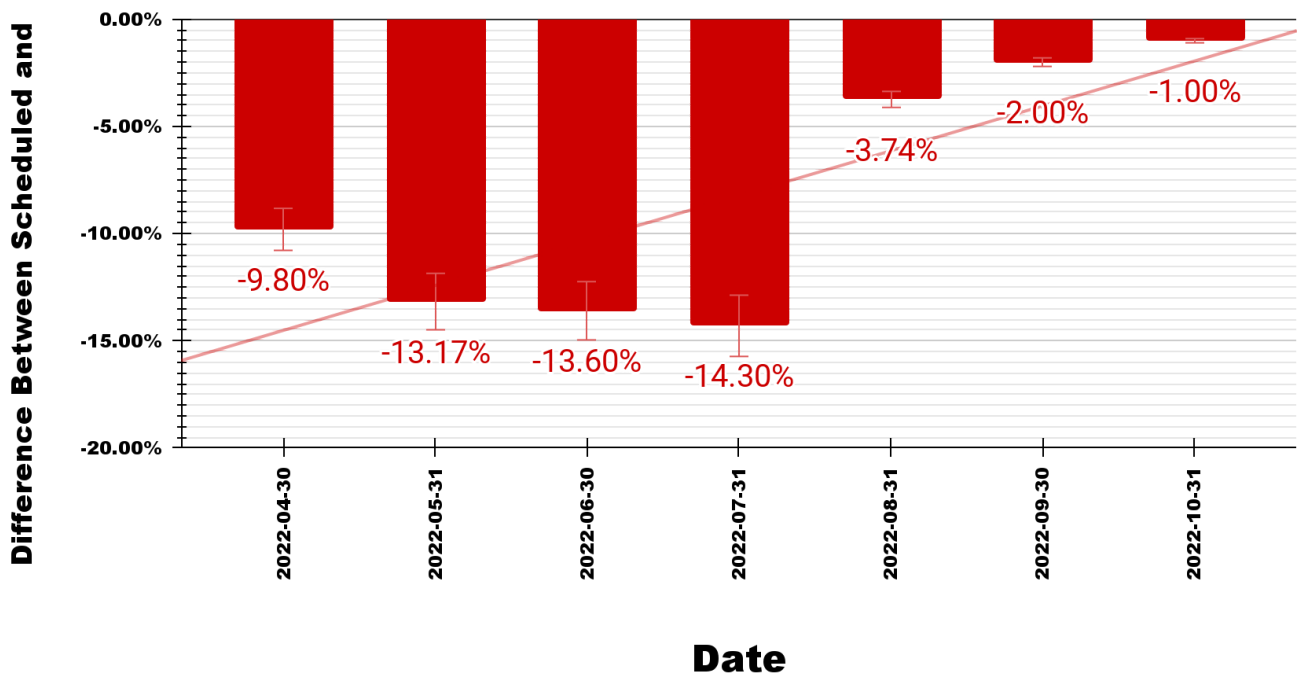
Cumulative Progress



Date	Difference Between Scheduled and Actual
2022-04-30	-9.80%
2022-05-31	-13.17%
2022-06-30	-13.60%
2022-07-31	-14.30%
2022-08-31	-3.74%
2022-09-30	-2.00%
2022-10-31	-1.00%

PKG 2 Difference: Scheduled Vs. Actual

Thahr Al Sarow Basic Boys - Jerash



7.4 Jumana Bint Abi-Taleb Basic Mixed School- Amman

Jumana Bint Abi-Taleb Basic Mixed School- Amman Monthly Progress			
Date	Monthly Elapsed Time %	Monthly Scheduled %	Monthly Actual %
2020-10-31	2.22%	0.00%	0.00%
2020-11-30	6.67%	0.00%	0.50%
2020-12-31	6.89%	0.50%	6.20%
2021-01-31	6.89%	6.20%	6.10%
2021-02-28	6.22%	6.10%	1.60%
2021-03-31	6.89%	1.60%	2.70%
2021-04-30	6.67%	2.70%	6.10%
2021-05-31	6.89%	6.10%	2.80%
2021-06-30	6.67%	2.80%	8.50%
2021-07-31	6.89%	8.50%	6.41%
2021-08-31	6.89%	6.41%	2.85%
2021-09-30	6.67%	2.85%	4.51%
2021-10-31	6.89%	4.51%	7.30%
2021-11-30	6.67%	7.30%	3.52%
2021-12-31	6.89%	3.52%	4.30%
2022-01-31	6.89%	4.30%	1.85%
2022-02-28	6.22%	1.85%	2.39%
2022-03-31	6.89%	2.39%	6.28%
2022-04-30	6.67%	6.28%	0.55%
2022-05-31	6.89%	6.80%	4.55%
2022-06-30	6.67%	8.80%	6.28%
2022-07-31	6.89%	8.90%	3.86%
2022-08-31	6.89%	1.59%	9.27%
2022-09-30	6.89%	0.00%	0.23%
2022-10-31	6.89%	0.00%	0.35%

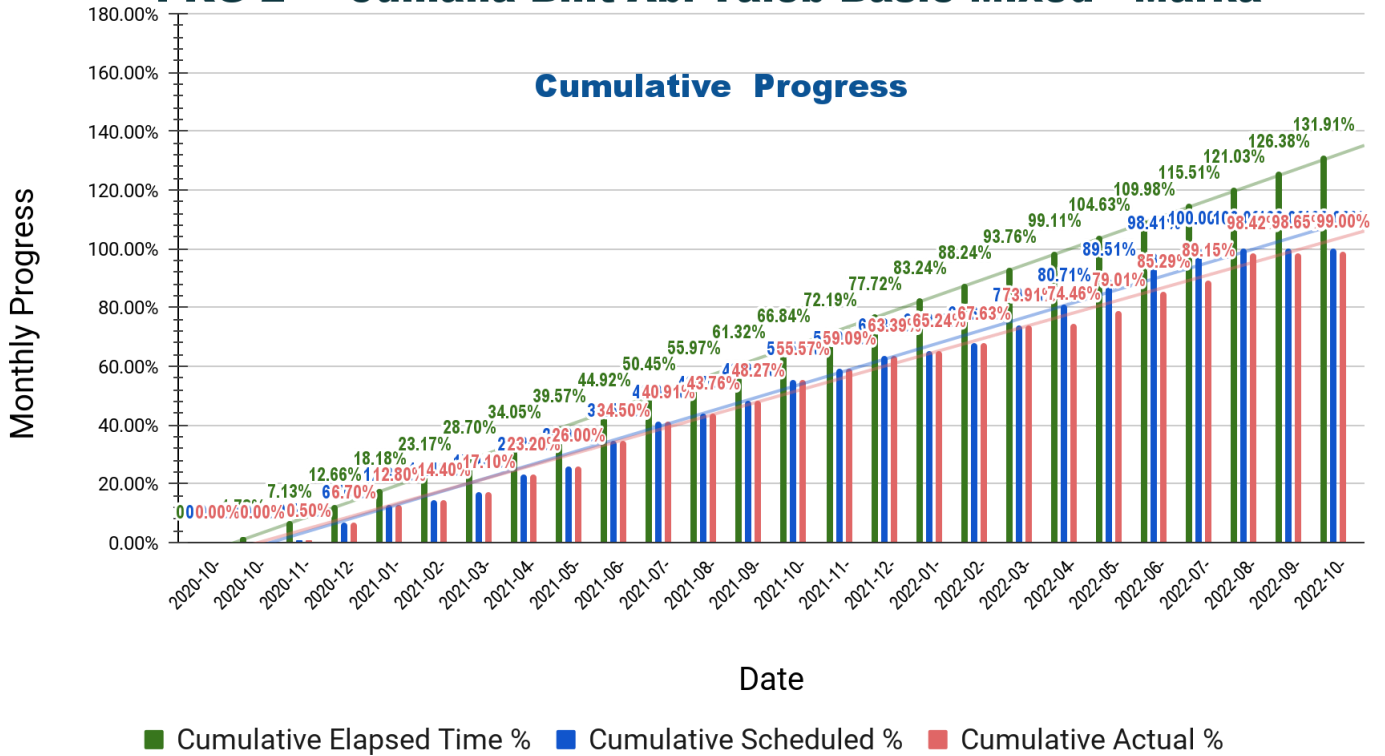
PKG 2 Jumana Bint Abi Taleb Basic Mixed - Marka

Monthly Progress

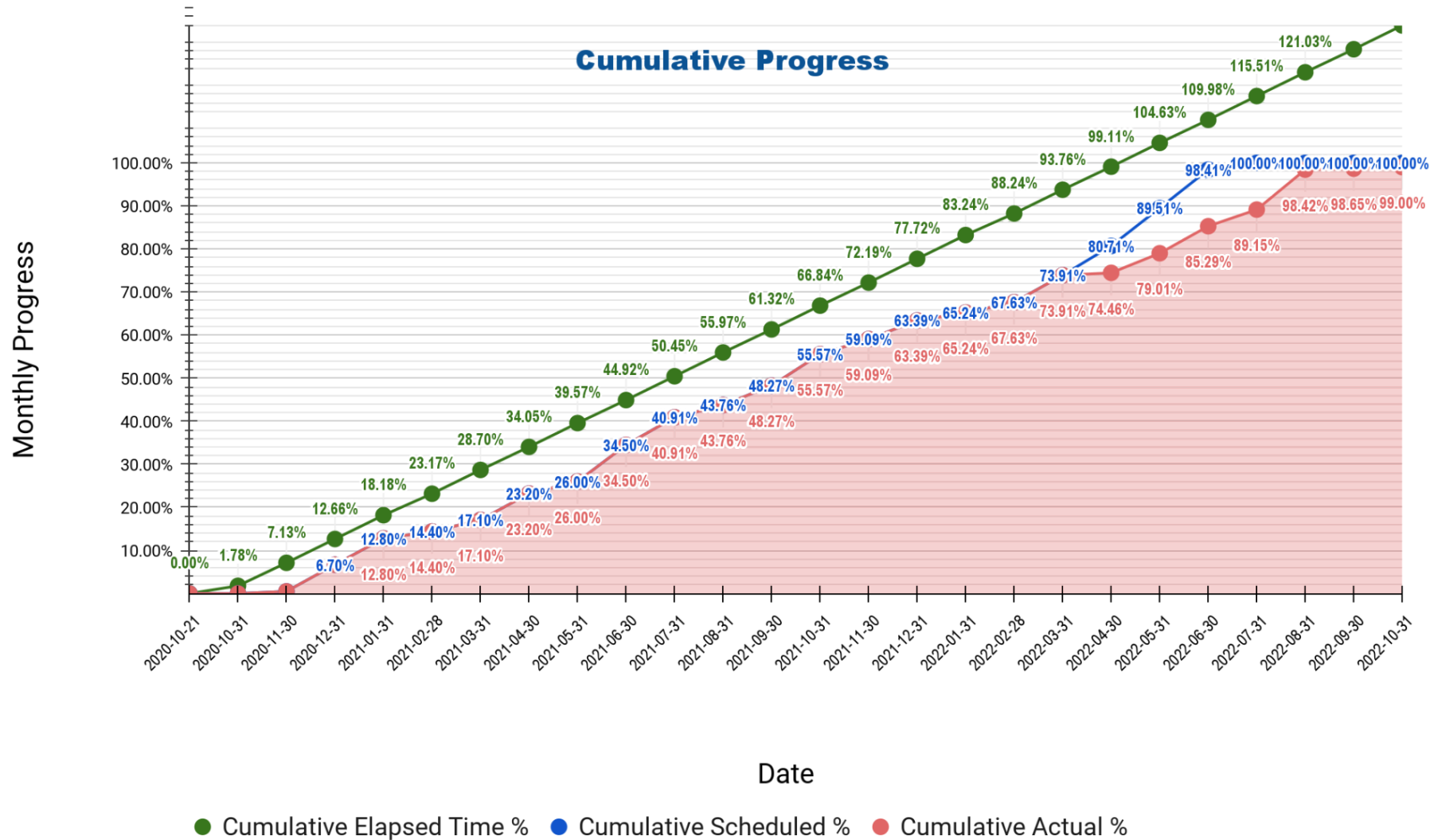


Jumana Bint Abi-Taleb Basic Mixed School- Amman Cumulative Progress			
Date	Cumulative Elapsed Time %	Cumulative Scheduled %	Cumulative Actual %
2020-10-21	0.00%	0.00%	0.00%
2020-10-31	1.78%	0.00%	0.00%
2020-11-30	7.13%	0.50%	0.50%
2020-12-31	12.66%	6.70%	6.70%
2021-01-31	18.18%	12.80%	12.80%
2021-02-28	23.17%	14.40%	14.40%
2021-03-31	28.70%	17.10%	17.10%
2021-04-30	34.05%	23.20%	23.20%
2021-05-31	39.57%	26.00%	26.00%
2021-06-30	44.92%	34.50%	34.50%
2021-07-31	50.45%	40.91%	40.91%
2021-08-31	55.97%	43.76%	43.76%
2021-09-30	61.32%	48.27%	48.27%
2021-10-31	66.84%	55.57%	55.57%
2021-11-30	72.19%	59.09%	59.09%
2021-12-31	77.72%	63.39%	63.39%
2022-01-31	83.24%	65.24%	65.24%
2022-02-28	88.24%	67.63%	67.63%
2022-03-31	93.76%	73.91%	73.91%
2022-04-30	99.11%	80.71%	74.46%
2022-05-31	104.63%	89.51%	79.01%
2022-06-30	109.98%	98.41%	85.29%
2022-07-31	115.51%	100.00%	89.15%
2022-08-31	121.03%	100.00%	98.42%
2022-09-30	126.38%	100.00%	98.65%
2022-10-31	131.91%	100.00%	99.00%

PKG 2 Jumana Bint Abi Taleb Basic Mixed - Marka



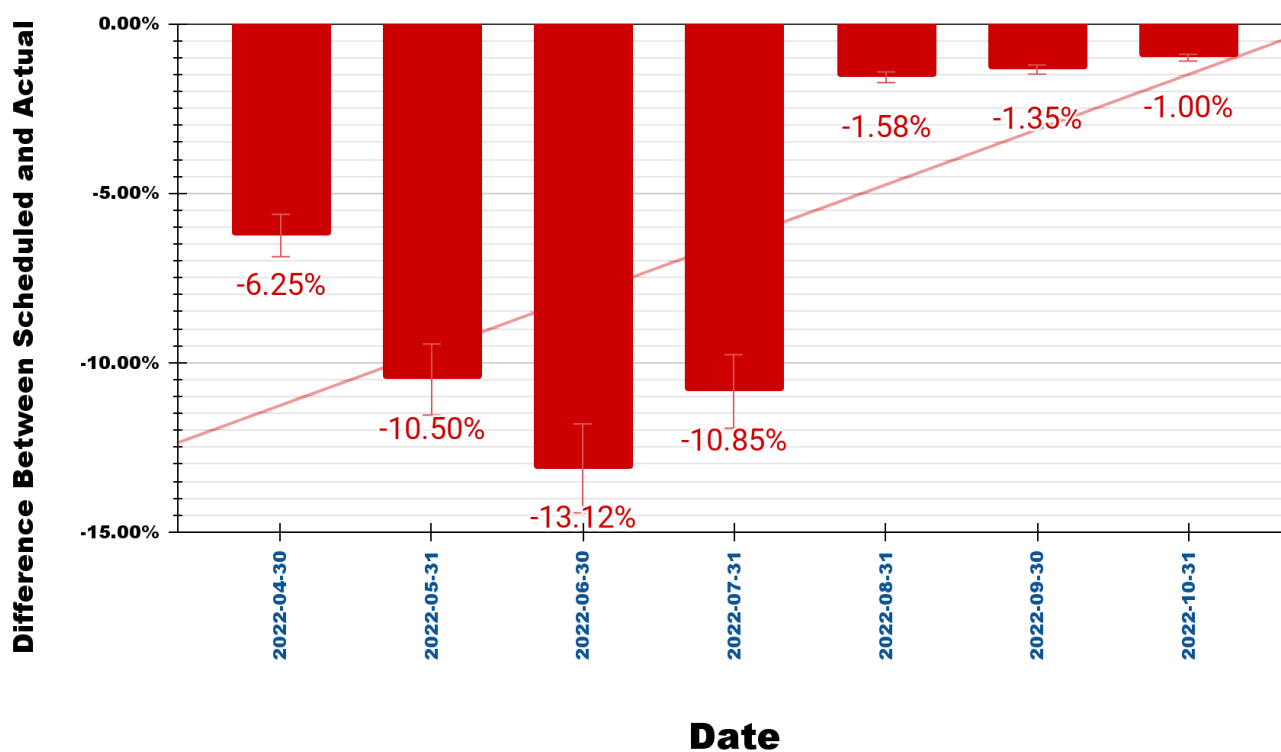
PKG 2 Jumana Bint Abi Taleb Basic Mixed - Marka



Date	Difference Between Scheduled and Actual
2022-04-30	-6.25%
2022-05-31	-10.50%
2022-06-30	-13.12%
2022-07-31	-10.85%
2022-08-31	-1.58%
2022-09-30	-1.35%
2022-10-31	-1.00%

PKG 2 Difference: Scheduled Vs. Actual

Jumana Bint Abi Taleb Basic Mixed - Marka



7.5 Engineer comments on work progress

A. Average for the three schools:

The cumulative progress -as average- for the three schools at the end of this month:

Date	Cumulative Elapsed Time %	Cumulative Scheduled %	Cumulative Actual %
2022-10-31	132.11%	100.00%	98.33%

The difference Between Scheduled and Actual is **-1.67%**

B. Hay Al Iskan Basic Mixed School:

The cumulative progress -as average- for the three schools at the end of this month:

Date	Cumulative Elapsed Time %	Cumulative Scheduled %	Cumulative Actual %
2022-10-31	139.62%	100.00%	97.00%

The difference Between Scheduled and Actual is **-3.00%**

C. Thahr Al Sarow Basic School for Boys:

The cumulative progress -as average- for the three schools at the end of this month:

Date	Cumulative Elapsed Time %	Cumulative Scheduled %	Cumulative Actual %
2022-10-31	124.79%	100.00%	99.00%

The difference Between Scheduled and Actual is **-1.00%**

D. Jumana Bint Abi Taleb Basic Mixed School:

The cumulative progress -as average- for the three schools at the end of this month:

Date	Cumulative Elapsed Time %	Cumulative Scheduled %	Cumulative Actual %
2022-10-31	131.91%	100.00%	99.00%

The difference Between Scheduled and Actual is -1.00%

In accordance with the above, the contractor will be drawn to override the delay at the end of this month, to approach the cumulative progress scheduled at the end of next month.

7.6 Tracking Tasks in CPM

A- Hay Al Iskan Basic Mixed School - Jerash:

- <https://docs.google.com/spreadsheets/d/e/2PACX-1vTxooQFL2QwOoOd5v-xUjlzstCzRkqVPINfg-TF1QaiOHAad7M0I5dUBnzNCrtRpXQz2rBByYOIVPwy/pubhtml?gid=517196601&single=true>
- <https://docs.google.com/spreadsheets/d/e/2PACX-1vTxooQFL2QwOoOd5v-xUjlzstCzRkqVPINfg-TF1QaiOHAad7M0I5dUBnzNCrtRpXQz2rBByYOIVPwy/pubhtml?gid=435791778&single=true>

B- Thahr Al Sarow Basic School for Boys - Jerash:

- <https://docs.google.com/spreadsheets/d/e/2PACX-1vTxooQFL2QwOoOd5v-xUjlzstCzRkqVPINfg-TF1QaiOHAad7M0I5dUBnzNCrtRpXQz2rBByYOIVPwy/pubhtml?gid=1364154284&single=true>
- <https://docs.google.com/spreadsheets/d/e/2PACX-1vTxooQFL2QwOoOd5v-xUjlzstCzRkqVPINfg-TF1QaiOHAad7M0I5dUBnzNCrtRpXQz2rBByYOIVPwy/pubhtml?gid=1306769488&single=true>

C- Jumana Bint Abi Taleb Basic Mixed School - Amman:

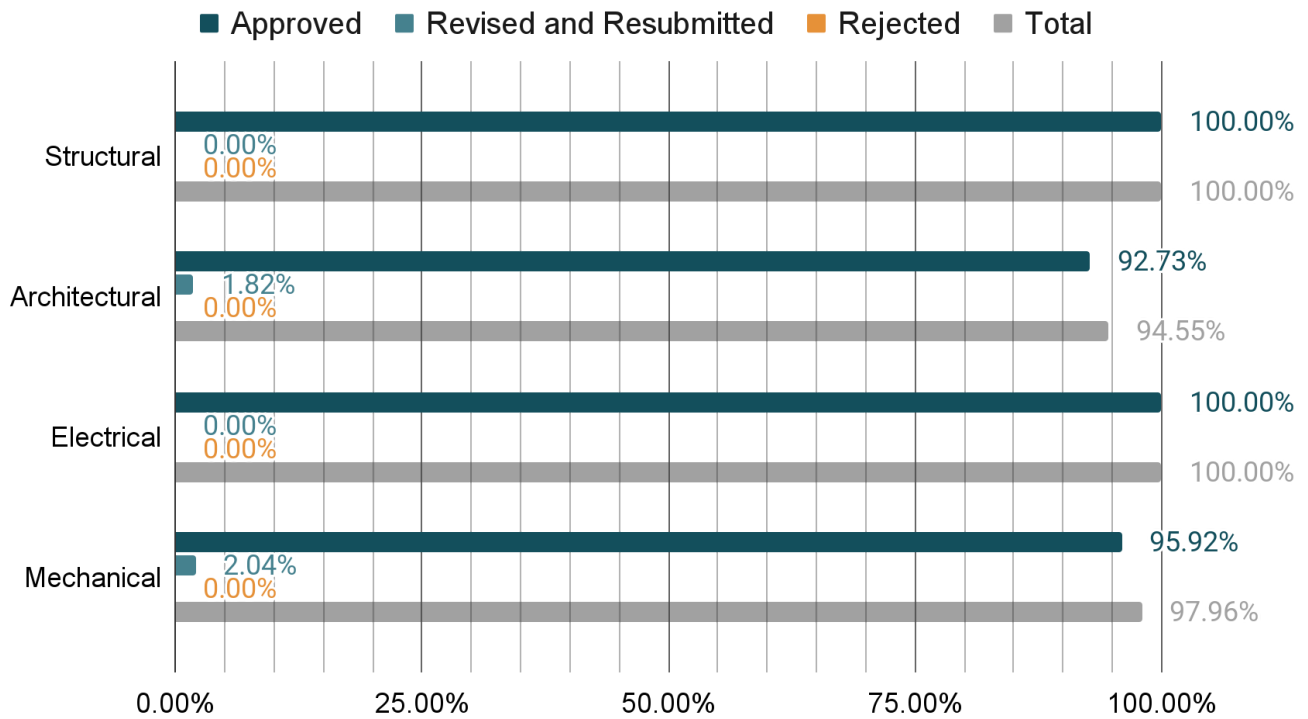
- <https://docs.google.com/spreadsheets/d/e/2PACX-1vTxooQFL2QwOoOd5v-xUjlzstCzRkqVPINfg-TF1QaiOHAad7M0I5dUBnzNCrtRpXQz2rBByYOIVPwy/pubhtml?gid=971892763&single=true>
- <https://docs.google.com/spreadsheets/d/e/2PACX-1vTxooQFL2QwOoOd5v-xUjlzstCzRkqVPINfg-TF1QaiOHAad7M0I5dUBnzNCrtRpXQz2rBByYOIVPwy/pubhtml?gid=1766247540&single=true>

8 Submitted Materials

8.1 Summary of Submitted Materials

PKG 2 Summary of Submitted Materials 2022-10-31				
Item	Total No. of Materials to be Submitted	Total No. of Submitted Materials	Submitted Materials (%)	Non Submitted Materials (%)
Structural	20	20	100.00%	0.00%
Architectural	55	52	94.55%	5.45%
Electrical	27	27	100.00%	0.00%
Mechanical	49	48	97.96%	2.04%
PKG 2 Summary of Submitted Materials (No.)				
Item	Approved	Revised and Resubmitted	Rejected	Total
Structural	20	0	0	20
Architectural	51	1	0	52
Electrical	27	0	0	27
Mechanical	47	1	0	48
PKG 2 Summary of Submitted Materials (%)				
Item	Approved	Revised and Resubmitted	Rejected	Total
Structural	100.00%	0.00%	0.00%	100.00%
Architectural	92.73%	1.82%	0.00%	94.55%
Electrical	100.00%	0.00%	0.00%	100.00%

PKG 2 Summary of Submitted Materials



8.2 Shop Drawings & Submittal Tracking LOG

- <https://docs.google.com/spreadsheets/d/e/2PACX-1vTu6NQ93BVw5zcX5uXY3SbEHRX4yTFFYB-po4eKlnLoJuQWOLdjin1DMdjWmllYHSXSn0AXk8RccnoB/pubhtml>

8.3 Materials Submittal Vendor List

- https://docs.google.com/spreadsheets/d/e/2PACX-1vTqc3EUGnOrFME3IYiFpKllhuUVLCTNLf10GePLwv4kUPz-GE1Ry17vgy_zlB2IOP8SmvTzx1mMbss/pcbhtml

9 | Correspondence Tracking Logs

- ❑ https://docs.google.com/spreadsheets/d/e/2PACX-1vTxngyYrrv-MrICl7OMvaxmw2Z-xghlYmj1U0fpY_8Jg_rxUDnvizKufTNRyn9BJVHlale5cfyaKLSF/pubhtml

10 | Non-conformance Report Tracking Log

10.1 HSE

- ❑ https://docs.google.com/spreadsheets/d/e/2PACX-1vSjX60qYsp_eNYMgOskb0Qt4kLxCuWN_V196j5fEPJKkpfA1JjMZUQ9h5pVSLlBMGuKueGvMViknnO0/pubhtml

10.2 QCs

Hay Al Iskan Basic Mixed School- Jerash

- ❑ https://b9686515-2954-4919-832c-2c36b1d1850f.filesusr.com/ugd/c80178_1807f10908b047519122e3813f3c27cd.pdf
- ❑ https://b9686515-2954-4919-832c-2c36b1d1850f.filesusr.com/ugd/c80178_07c4698c05c04073b2e0938edbd5dcbf.pdf
- ❑ https://b9686515-2954-4919-832c-2c36b1d1850f.filesusr.com/ugd/c80178_06a4594cc4e04748a18575ddb2d8f82a.pdf
- ❑ https://b9686515-2954-4919-832c-2c36b1d1850f.filesusr.com/ugd/c80178_9eafd88075f7417288edb3817a3e4746.pdf
- ❑ https://b9686515-2954-4919-832c-2c36b1d1850f.filesusr.com/ugd/c80178_8fcd35c7c6424910b328787b791d40bc.pdf
- ❑ https://b9686515-2954-4919-832c-2c36b1d1850f.filesusr.com/ugd/bed180_84a170750f4d4c398a0b60e66cce9dff.pdf

- ❑ https://b9686515-2954-4919-832c-2c36b1d1850f.filesusr.com/ugd/bed180_10c3d6d0575b42c098496dcb0468e44b.pdf
- ❑ https://b9686515-2954-4919-832c-2c36b1d1850f.filesusr.com/ugd/bed180_75f01267783a4dd0bee5139487faca25.pdf
- ❑ https://b9686515-2954-4919-832c-2c36b1d1850f.filesusr.com/ugd/bed180_4145bb3def724fb1ab1625b904abc8c8.pdf
- ❑ https://b9686515-2954-4919-832c-2c36b1d1850f.filesusr.com/ugd/bed180_992295331ab948a384befa72eb3363c2.pdf
- ❑ https://b9686515-2954-4919-832c-2c36b1d1850f.filesusr.com/ugd/bed180_f7f96f7c7c2a42ff998f590a9f98272e.pdf
- ❑ https://b9686515-2954-4919-832c-2c36b1d1850f.filesusr.com/ugd/bed180_8d68944236ea439da61786fbc02748ef.pdf
- ❑ https://b9686515-2954-4919-832c-2c36b1d1850f.filesusr.com/ugd/bed180_ef4930e8e7ca4a5da309a1a1a65af45a.pdf
- ❑ https://b9686515-2954-4919-832c-2c36b1d1850f.filesusr.com/ugd/bed180_cd26a9c332274d64a8ba6b5210c67ec3.pdf
- ❑ https://b9686515-2954-4919-832c-2c36b1d1850f.filesusr.com/ugd/bed180_6802132cc24c4291874500fa95139d08.pdf
- ❑ https://www.medanat.site/_files/ugd/c80178_e1902f3ca0dd482eb991fdc6031e0ea0.pdf
- ❑ https://www.medanat.site/_files/ugd/c80178_cbd0b36eda7e4ff2aae0ad41d086119e.pdf
- ❑ https://www.medanat.site/_files/ugd/c80178_2e92b92adb3a4f879b29e8e3bf61e25e.pdf
- ❑ https://www.medanat.site/_files/ugd/c80178_62c4329de26b4ec5b55d36a5353eb776.pdf
- ❑ https://www.medanat.site/_files/ugd/c80178_6c5cacf844f446bd860148b0bb11e7cc.pdf
- ❑ https://www.medanat.site/_files/ugd/c80178_b739dfb585dd428a909e1d136ef24f9a.pdf
- ❑ https://www.medanat.site/_files/ugd/c80178_a16f79c945c14033a5ede8fd43e24ee7.pdf

Thahr Al Sarow Basic School for Boys- Jerash

- ❑ https://b9686515-2954-4919-832c-2c36b1d1850f.fi/lesusr.com/ugd/c80178_8421931f3724460ca09965cf4d6d9115.pdf
- ❑ https://b9686515-2954-4919-832c-2c36b1d1850f.fi/lesusr.com/ugd/bed180_4e39aa4d5be1410d87be252ead3e9e98.pdf
- ❑ https://b9686515-2954-4919-832c-2c36b1d1850f.fi/lesusr.com/ugd/bed180_2aeeb4363fa14289a2483f4713c719b2.pdf
- ❑ https://b9686515-2954-4919-832c-2c36b1d1850f.fi/lesusr.com/ugd/bed180_797572bf286e43c3b29067146b4d27bd.pdf
- ❑ https://b9686515-2954-4919-832c-2c36b1d1850f.fi/lesusr.com/ugd/bed180_86c8e0590f484c3aae4881a8d17ba048.pdf
- ❑ https://b9686515-2954-4919-832c-2c36b1d1850f.fi/lesusr.com/ugd/bed180_883418b6e70e44d1893f55928ef4aa6c.pdf
- ❑ https://b9686515-2954-4919-832c-2c36b1d1850f.fi/lesusr.com/ugd/bed180_d76a7c0c0a5e498999dc37d3f947324a.pdf
- ❑ https://b9686515-2954-4919-832c-2c36b1d1850f.fi/lesusr.com/ugd/bed180_6213700664314c848f190d23b90a053d.pdf
- ❑ https://b9686515-2954-4919-832c-2c36b1d1850f.fi/lesusr.com/ugd/bed180_e4f72fb3b6ea453c8fedc063f0bb745b.pdf
- ❑ https://b9686515-2954-4919-832c-2c36b1d1850f.fi/lesusr.com/ugd/bed180_80e3957ae3244930864704d7b7c9e18e.pdf
- ❑ https://www.medanat.site/_files/ugd/c80178_2d86ea85ac464f6485b97d9fa1bdac9b.pdf
- ❑ https://www.medanat.site/_files/ugd/c80178_ab5658ccac2b453b873fec1462d16169.pdf
- ❑ https://www.medanat.site/_files/ugd/c80178_74f0bcd20f3a497da2da2c8d62b02faa.pdf
- ❑ https://www.medanat.site/_files/ugd/c80178_04853161a41649e7afec83cab38d874a.pdf
- ❑ https://www.medanat.site/_files/ugd/c80178_36166d3dad9b4e7b8dfdf94b7caaeabce.pdf

- ❑ https://www.medanat.site/files/ugd/c80178_23a569b2430d492f90ea3d99b5b035ea.pdf
- ❑ https://www.medanat.site/files/ugd/c80178_4d1dd6d3466e4aa9aa31ca6bdfb3fde1.pdf

Jumana Bint Abi Taleb Basic Mixed School- Amman

- ❑ https://b9686515-2954-4919-832c-2c36b1d1850f.filesusr.com/ugd/c80178_bb8c0e1f43ee4391b5f5129428f6ab57.pdf
- ❑ https://b9686515-2954-4919-832c-2c36b1d1850f.filesusr.com/ugd/c80178_6c89b62dfc12458e8bc2b6ff36d7567f.pdf
- ❑ https://b9686515-2954-4919-832c-2c36b1d1850f.filesusr.com/ugd/c80178_2af7ede34fa242658247977cfd8eed00.pdf
- ❑ https://b9686515-2954-4919-832c-2c36b1d1850f.filesusr.com/ugd/bed180_92ff895cf7d7414fa2aff0238a5963d3.pdf
- ❑ https://b9686515-2954-4919-832c-2c36b1d1850f.filesusr.com/ugd/bed180_df37b3f79bf54db9974d7ccc15d1f9af.pdf
- ❑ https://b9686515-2954-4919-832c-2c36b1d1850f.filesusr.com/ugd/bed180_042e78e150a24197bd405173b6ac349d.pdf
- ❑ https://b9686515-2954-4919-832c-2c36b1d1850f.filesusr.com/ugd/bed180_af4ea1e6894b40cb82d707a495f0287a.pdf
- ❑ https://b9686515-2954-4919-832c-2c36b1d1850f.filesusr.com/ugd/bed180_9b69075d60f141f9aafe71cf9d40d6f1.pdf
- ❑ https://b9686515-2954-4919-832c-2c36b1d1850f.filesusr.com/ugd/bed180_2b493e79a29a4acf9122e114121213bf.pdf
- ❑ https://b9686515-2954-4919-832c-2c36b1d1850f.filesusr.com/ugd/bed180_792ad7f893294ee2b12e1608867ea29a.pdf
- ❑ https://b9686515-2954-4919-832c-2c36b1d1850f.filesusr.com/ugd/bed180_a544b9450245479d91a46d67711865d9.pdf

- ❑ https://b9686515-2954-4919-832c-2c36b1d1850f.filesusr.com/ugd/bed180_e93e845ee2f9471caec921ae49f087ca.pdf
- ❑ https://b9686515-2954-4919-832c-2c36b1d1850f.filesusr.com/ugd/bed180_059a9df132974b66af0448f590219555.pdf
- ❑ https://www.medanat.site/_files/ugd/c80178_e2c9350837564ee79724c446e341ed0d.pdf
- ❑ https://www.medanat.site/_files/ugd/c80178_5978945b2837486a9ad307e3812bc6ad.pdf
- ❑ https://www.medanat.site/_files/ugd/c80178_cbc9115ccc7a4c9e93f229a44b0d7990.pdf
- ❑ https://www.medanat.site/_files/ugd/c80178_69f876661c764c9984a117ac66e585b3.pdf
- ❑ https://www.medanat.site/_files/ugd/c80178_3b8e297d518649d6b1bc51b5c4670209.pdf
- ❑ https://www.medanat.site/_files/ugd/c80178_d280db99b173400ab396808b20f065d8.pdf
- ❑ https://www.medanat.site/_files/ugd/c80178_1270f31b3ba34aab95e71e375d1c09a0.pdf

10.3 NCRs

- ❑ https://docs.google.com/spreadsheets/d/e/2PACX-1vRCdhdyMg2w7aub85wSr2x5zVoAH_N-j5dXUIHAXnV2u_W_I6_KaM6lopck70ENfSGgppujJEQwkY8/pubhtml?gid=1457468755&single=true
- ❑ https://docs.google.com/spreadsheets/d/e/2PACX-1vRCdhdyMg2w7aub85wSr2x5zVoAH_N-j5dXUIHAXnV2u_W_I6_KaM6lopck70ENfSGgppujJEQwkY8/pubhtml?gid=1351232002&single=true
- ❑ https://docs.google.com/spreadsheets/d/e/2PACX-1vRCdhdyMg2w7aub85wSr2x5zVoAH_N-j5dXUIHAXnV2u_W_I6_KaM6lopck70ENfSGgppujJEQwkY8/pubhtml?gid=131850383&single=true

11 | Request For Information Tracking Logs

11.1 RFIs-Designer

- ❑ <https://docs.google.com/spreadsheets/d/e/2PACX-1vTF3EZfQUO87tRNKkOBikwBhhqtbx-cO2FGNWqXuyVIWq5GGRyS801j5XnAo9t4fg1WNRrZlZyXJdya/pubhtml?gid=0&single=true>

11.2 RFIs-Contractor

- ❑ https://docs.google.com/spreadsheets/d/e/2PACX-1vQLTfzyYtGgRB8vOuZkgqVxGyD88c63tRsBPfSPXWLDrdSniUBmh4QGDk5bE7o_L78pUuCOGiFxnPK/pubhtml?gid=0&single=true

12 | Site problems and Solutions

12.1 Hay Al Iskan Basic Mixed School-Jerash

The Designer provided a modified site plan including the new location of the water tank, a letter was sent to MPWH in this regard and they provided us with their approval. The Contractor is addressed concerning this issue.

A meeting was held in the Jerash Governor office in order to discuss the applicability of reducing the planned deduction from 5m to 3m, the said meeting was in the presence of the representatives of Directorate of Education/Jerash, Directorate of public Works & Housing/Jerash, Greater Jerash Municipality, Medanat office and Dijlah.

Upon the said meeting, MPWH sent a letter to MOL asking to provide them with the details and section of the subject street in order to address the Designer in this regard.

At the same time, the Directorate of Education/Jerash sent a letter to Greater Jerash Municipality for the same purpose.

A Greater Jerash Municipality surveyor provided us with the levels of the land where the regulatory street is planned to be executed, and the designer was contacted in this regard.

MOLA issued a letter to the Prime Ministry to announce the approval of Greater Jerash Municipality to deduct 3m along the construction site, in one of the local newspapers on 01/09/2021, the objection duration is 14 days.

The announcement was published in the official newspaper of the Prime Ministry in addition to Al Dostour and Sada Al Sha'ab local newspapers, the objection duration is 14 days.

No objection was recorded, and the Jerash Governorate issued a letter to MoLA requesting them to proceed with the District Committee decision in this regard.

The decision was taken by MoLA- the Supreme Organizing Council- and they addressed the Prime Ministry in order to publish the related announcement in the Official Newspaper – planned to be on 1/12/21.

The final regulatory plan is provided by Greater Jerash Municipality, which is already sent to the Employer, simultaneously USAID was contacted in order to address the Designer for the redesign of the site plan. The Designer provided a new proposed site plan which is under checking by the Engineer. Some comments were added by the Greater Jerash Municipality Surveyor, which were sent to the Designer and the drawings were prepared accordingly. A letter was sent to MPWH in this regard and we received their approval on the said drawings. The Contractor is instructed to proceed with the related works accordingly. We addressed the Employer in this regard and they approved the said drawings in writing. The Contractor is instructed to work accordingly and he is proceeding with work.

SOLVED

12.2 Thahr Al Sarow Basic School for Boys-Jerash

- 1- The new coordinates of the plot limit were inspected by the Greater Jerash Municipality representative and accordingly were handed over to the Contractor.
- 2- The Bus stop skeleton is removed by the said Municipality representative.

3- A written declaration is provided by “Al Masar Contracting company” confirming that no data cables are passing through the newly added area where the conflict existed.

4- An inspection was done by the Water authority/Jerash and it is expected that a cancelled water pipeline exists within the said area. Accordingly, the Contractor was requested to execute some pits before starting the excavations.

5- The Contractor started relocating the installed safety fence.

The Contractor and Medanat team followed the procedures of the relocation of the electrical poles and they were removed outside the site. **SOLVED**

12.3 Jumana Bint Abi Taleb Basic Mixed School- Amman

The Contractor executed an adjacent wall to the existing one since the existing wall is considered as a shoring system for the existing planter and trees of the neighbour, and based on MPWH representatives’ verbal instructions during the conducted visit on 10/12/2021, a letter was sent to MPWH including the additional concrete quantities resulting of this work and due to technical issues.

MPWH approved the additional quantities.

SOLVED

13 | Meetings and Site Visits

13.1 Coordination & Progress Meetings

Coordination & Progress Meetings				
No.	Date	Location	Parties	Agenda
1	To be announced	To be announced	<ul style="list-style-type: none"> ● MPWH ● USAID ● Trigon ● Wahib Medanat ● Dijlah Est. Const. Contr. 	<p>October Monthly Progress Meeting:</p> <ul style="list-style-type: none"> ● Health, Safety and Environment. ● Site borders, boundary walls/ Obstacles. ● Progress review in general. ● Construction Schedule and Update- using the construction schedule, review and projection/ the Contractor. ● Quality Control. ● Status of submittals.

13.2 Site Visits

Site Visits				
No.	Date	Location	Parties	Agenda
1				

13.3 Regular Monthly Site Visits (Home Office Support)

Regular Monthly Site Visits (Home Office Support)				
1	04/10/2022	Hay Al Iskan Basic Mixed School- Jerash	Engineer Rep.	<ul style="list-style-type: none">• The supervision observed the installation of the tensile shadings at the entrance of the KG.• The team observed that the Contractor has started with planting trees and shrubs.• The team inspected the final stage of painting work at the classrooms and corridors.

Home Office Support, October 04, 2022- Hay Al Iskan Basic Mixed School- Jerash

(Refer to 13.3 Site Visits Table)



SKEP III Home Office Support Site Visit Report

Consultant	Wahib Medanat Consultant Engineer	Rep No.	21-04102022
Contractor	Dijlah Establishment Constr. Contracting	Tender No.	(11/2019/USAID/SKEP/3/S) Schools for a Knowledge Economy Project (SKEP) - Phase (3) Package (1, 2)
Site Name	Hay Al Iskan Basic Mixed School- Jerash	Day/ Date	Tue. 04/10/2022
Duration of Project	450 Calendar Days	Total Project Budget	8,314,983.735 JD

No.	Visitors		Remarks
1	Suhair Amarin	- Project Dir./Head of Architectural Department	
2	Hashem Abu Kwak	- Senior Civil Engineer	
3	Akram Khammes	- Head of Electrical Department	
4	Marwan Sonna'a	- Head of Mechanical Department	
5	Hasan Shaqboua	- Quality Control Manager	

Visit Notes

No.	Description
1	The supervision observed the installation of the tensile shadings at the entrance of the KG.
2	The team observed that the Contractor has started with planting trees and shrubs.
3	The team inspected the final stage of painting work at the classrooms and corridors.



SKEP III Home Office Support Site Visit Report

WAHIB
MEDANAT
consultant engineers



General view of the project site

(figure: 01 & 02)

(figure:01)



(figure:02)



SKEP III Home Office Support Site Visit Report

WAHIB
MEDANAT
consultant engineers



The supervision observed the installation of the tensile shadings at the entrance of the KG

(figure:03)



The team observed that the Contractor has started with planting trees and shrubs

(figure:04)

3



SKEP III Home Office Support Site Visit Report

WAHIB
MEDANAT
consultant engineers



(figure:05)

The team inspected the final stage of painting work at the classrooms and corridors



(figure:05 & 06)

(figure:06)

14 | Manpower Logs

14.1 Hay Al Iskan Basic Mixed School – Jerash Progress

14.2 Thahr Al Sarow Basic School for Boys-Jerash

14.3 Jumana Bint Abi Taleb Basic Mixed School- Amman

- ❑ Manpower Link
- ❑ https://docs.google.com/spreadsheets/d/e/2PACX-1vSBIN-09Q3uSRiXhvXTy_mgaMJQmMRUVGU7eKjCNm_kk1LRlzuRri1yf_bnZn6BtPA4frpsksSYLvnq/pubhtml

15 | Daily Plant and Equipment

15.1 Hay Al Iskan Basic Mixed School – Jerash Progress

15.2 Thahr Al-Sarow Basic School for Boys- Jerash

15.3 Jumana Bint Abi-Taleb Basic Mixed School- Amman

- ❑ Daily Plant and Equipment Link
- ❑ https://docs.google.com/spreadsheets/d/e/2PACX-1vTvdvhreCfcqvsPFbCZbTomcgJftFbdmKuLIAt_LcNjLHvzyMHIO8c3VR0I5050ufLAn5D31GWqWcHA/pubhtml

16 | Lab-test Results Tracking Log

16.1 Hay Al Iskan Basic Mixed School – Jerash

16.2 Thahr Al-Sarow Basic School for Boys- Jerash

16.3 Jumana Bint Abi-Taleb Basic Mixed School- Amman

- https://docs.google.com/spreadsheets/d/e/2PACX-1vO-_y0mkbEv5-qPmQ6tQFlxTT6aTOjT1qMEKEenadAy_H7YnqxM_hQHGNm_tX_GITJ0jJcwQuRpSDb2/pubhtml

16.4 Comments on Laboratory Testing

The laboratory testing for various materials continued and the involved laboratories are the approved laboratory “International Centre for Geotechnical Studies” and the “Royal Scientific Society” laboratories.

The testing was conducted on concrete samples, tiling, stones, plastering accessories and MEP materials.

Most of the materials passed the requirements of specifications. In the cases where the material did not pass, the Contractor was requested to replace the representative quantity of the said material and re-testing was then conducted on the new material

17 | Obstacles Log (Site Obstacles)

- https://docs.google.com/spreadsheets/d/e/2PACX-1vQYxo1qyDbhSjbfvXeOyNQeDVdnIZ5cXcvi5oCT_3ftby8sLLUMN4NpIUfaXXUq-xD_X3ThviCMMduj/pubhtml?gid=603369061&single=true

17.1 Hay Al Iskan Basic Mixed School - Jerash

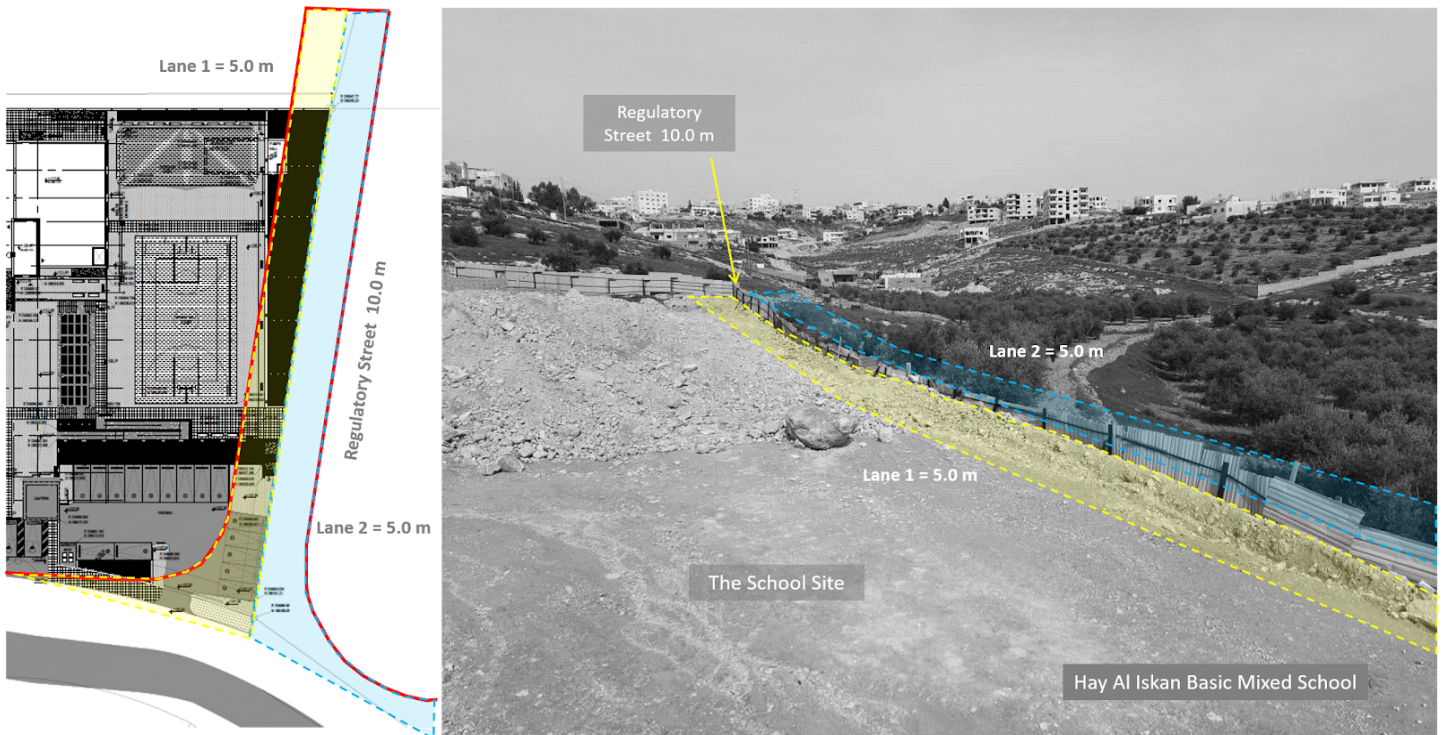


Figure 1. A regulatory (10.0 m) street is planned to be executed by deduction 5.0 m along the south western side, the other 5.0 m will be deducted from the neighbour's land.

SOLVED

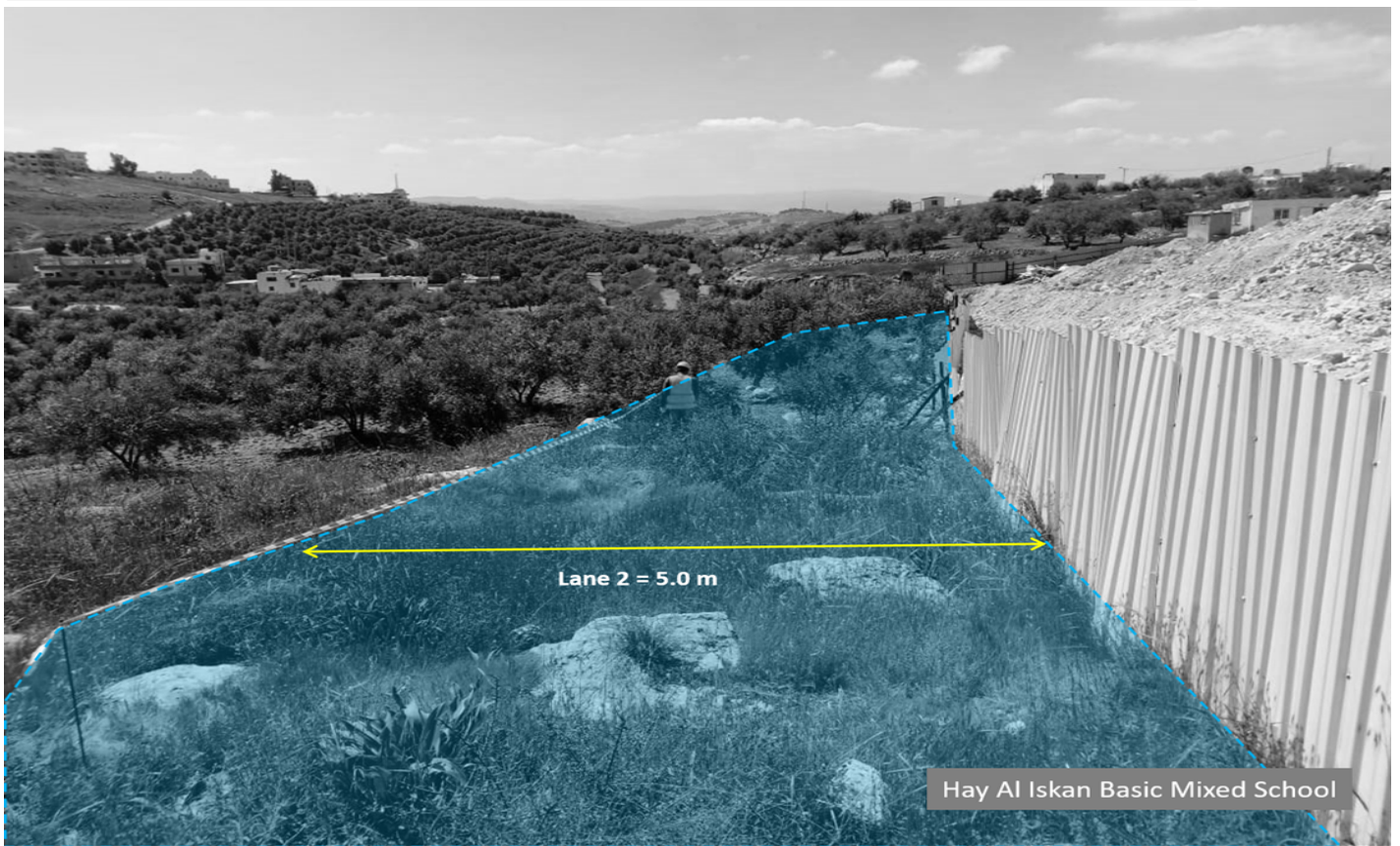


Figure 2. The 5.0 m encroachment on the neighbour's land

SOLVED

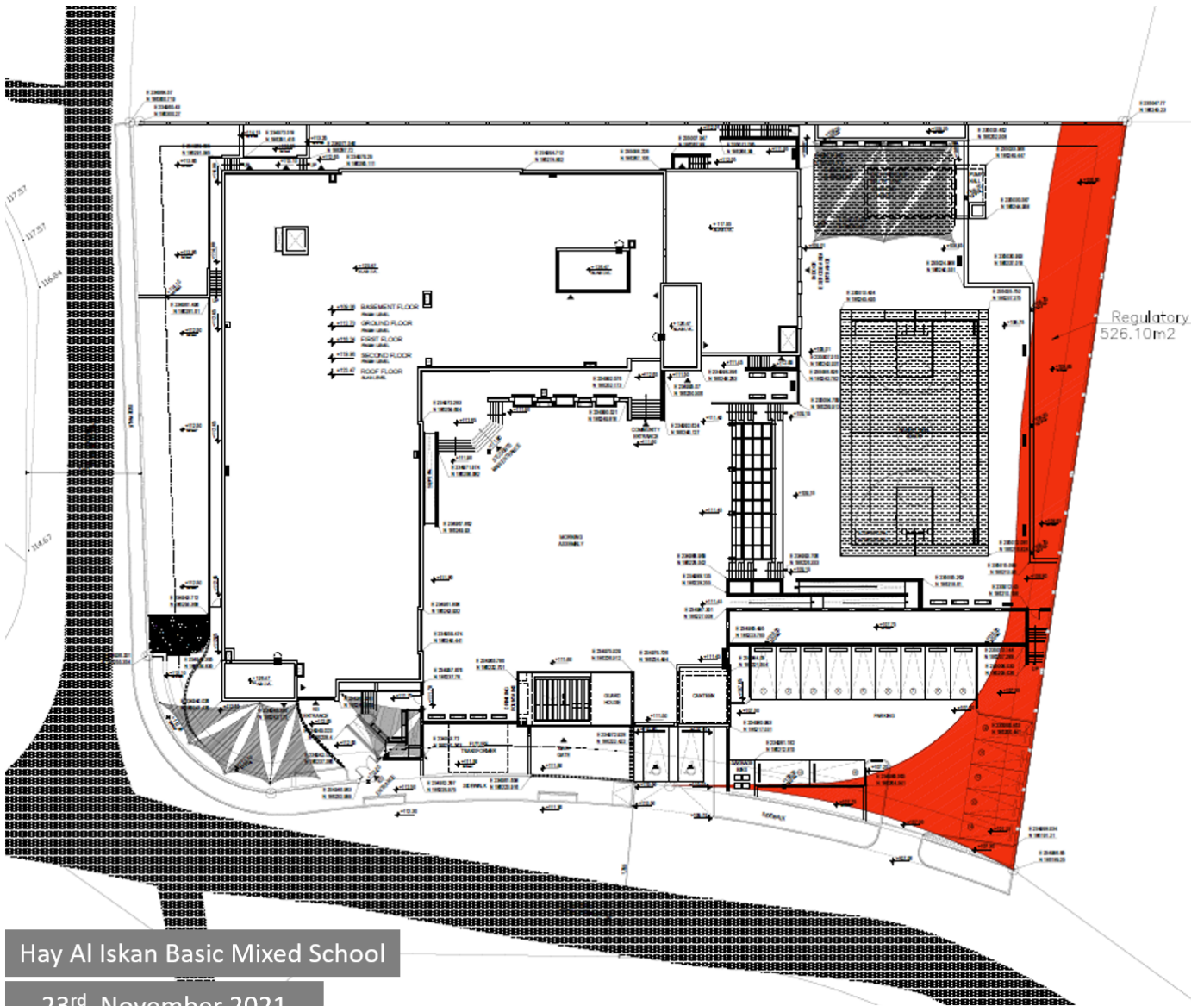


Figure 3. The final regulatory plan is provided by Greater Jerash Municipality

SOLVED

17.2 Thahr Al Sarow Basic School for Boys – Jerash SOLVED



Figure 3. Existing street encroaching on the site boundary

SOLVED

18 | Weather Condition

18.1 Hay Al Iskan Basic Mixed School – Jerash

- ❑ https://docs.google.com/spreadsheets/d/e/2PACX-1vRdJ_JZvCElqtcCaVIV98Yloq52RBXE0xAMegHu7k4hVoVT0Oj4-2CCTNGbqU7YL_FxxFxFxZI31TTERd/pubhtml?gid=0&single=true

18.2 Thahr Al-Sarow Basic School for Boys- Jerash

- ❑ https://docs.google.com/spreadsheets/d/e/2PACX-1vRdJ_JZvCElqtcCaVIV98Yloq52RBXE0xAMegHu7k4hVoVT0Oj4-2CCTNGbqU7YL_FxxFxFxZI31TTERd/pubhtml?gid=295583832&single=true

18.3 Jumana Bint Abi-Taleb Basic Mixed School- Amman

- ❑ https://docs.google.com/spreadsheets/d/e/2PACX-1vRdJ_JZvCElqtcCaVIV98Yloq52RBXE0xAMegHu7k4hVoVT0Oj4-2CCTNGbqU7YL_FxxFxFxZI31TTERd/pubhtml?gid=1174180114&single=true

19 | Selected Photos

19.1 Hay Al Iskan Basic Mixed School- Jerash



Parking area

01/10/2022



Installing the carpet at the multi-purpose hall

05/10/2022



Boiler room

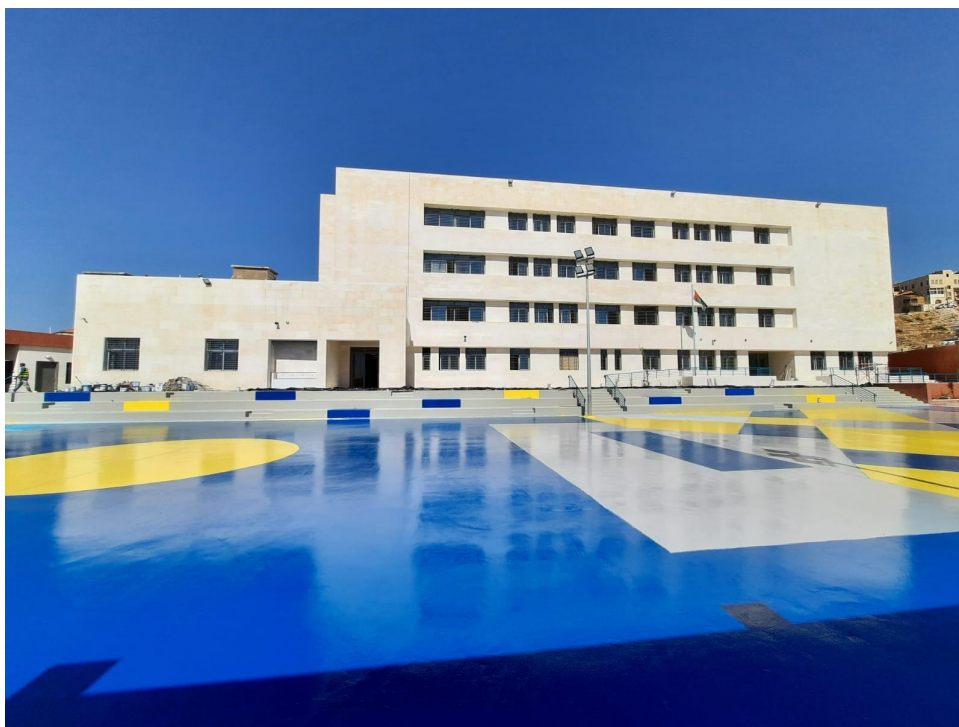
09/10/2022



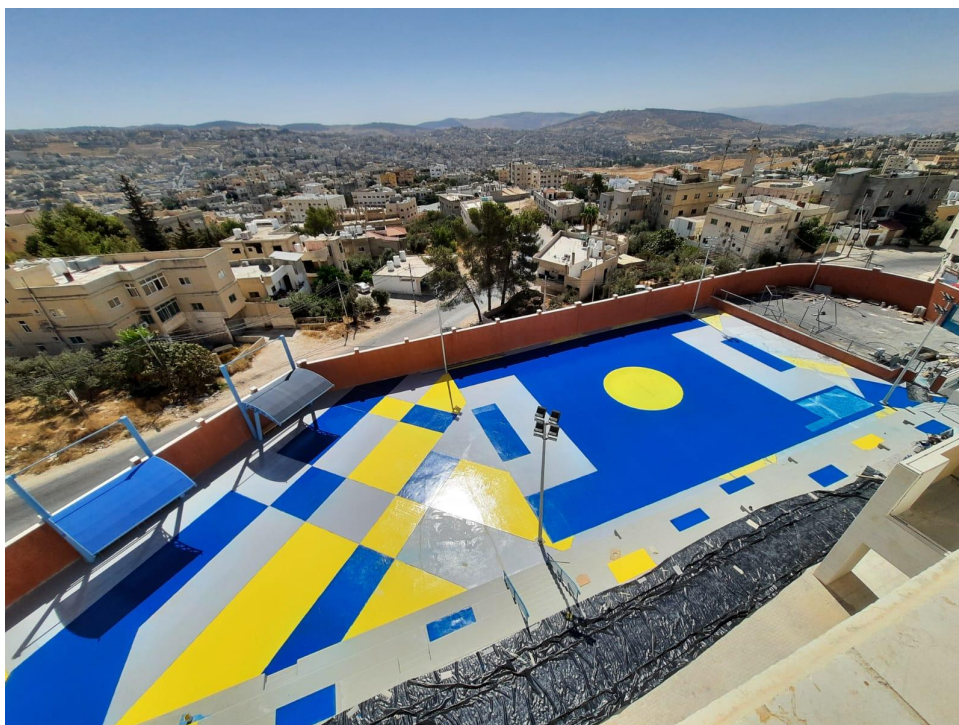
General view
of the project
site

10/10/2022

19.2 Thahr Al Sarow Basic School for Boys- Jerash



General view of the project site



19.3 Jumana Bint Abi Taleb Basic Mixed School - Amman



General view of the project site



20 | Location Links

20.1 [Hay Al Iskan Basic Mixed School – Jerash](#)

20.2 [Thahr Al-Sarow Basic School for Boys - Jerash](#)

20.3 [Jumana Bint Abi-Taleb Basic Mixed School - Amman](#)

21 | Website Reports Links

21.1 [Daily Reports](#)

21.2 [Weekly Reports](#)

21.3 [Monthly Reports](#)

21.4 [CMTO Inspection Reports](#)

21.5 [Quality Reports](#)

22 | Training

22.1 Training:

SKEPIII Site staff training sessions

We conduct one effective training session per week for both our staff and the contractor staff including fresh graduates. The training is conducted by our senior engineers from various disciplines and backgrounds. Our future plan for staff training is to host external trainers from the Ministry of Local Administration to talk about Municipalities regulations.



22.2 Training Sessions:

For More Details:

- Training Link:
- <https://www.medanat.site/training>